

S

B

oo

u

9

exempt from state owned railroad

20 miles of track

Compromise on an ~~track~~ softy

→ has there been
- admirably agreed -

- desire amendment -

Narrow gauge railroad exempt from

- tonnage -

1963	→	135 thousand tons	entire year
1981		124 thousand tons	month of Jan -

10 times as much -

- 20 times more track -

- railroad -

- 1970 -

WED

Weather

Intervals of high cloudiness tonight, low -10. Mainly cloudy with a few periods of snow Thursday. High +1. Friday: frequent sunny periods. Yesterday's high -4.6. Low last night -16.3. Trace of snow during last 24 hours. Sunset 7:06 p.m. Sunrise tomorrow 7:11 a.m. More details on page 2.



IDLE TRAINS may become a familiar sight. White Pass rail crews have been cut to a minimum by layoffs that also affect the trucking division.

WP lays off 48

By **MASSEY PADGIAM**
Staff Reporter

White Pass is laying off 48 people in several of its divisions.

White Pass president Tom King blames the layoffs on a drop in freight hauling because of the generally poor economy.

Nineteen people in Whitehorse — 17 in trucking and two more in the rail operation — were laid off Friday.

Fifteen workers are also

being laid off from the rail division in Skagway and three more in the rail division in Seattle.

Yesterday, King was in Skagway to talk to union officials and warn them things may get even worse.

It's "just the volume of business," King said. "The volumes certainly are . . . off from where they were in January."

A full train crew of five has been laid off in Skagway, barely weeks after being called back from the

traditional winter lull. Ten Teamsters in the rail yards are also being laid off.

"We're down to three (rail) crews," said Larry Jacquot, chairman of the Skagway local of the United Transportation Union. "We just put one on, anticipating an upturn . . . (Now) we're cut back again." Three rail crews is the minimum White Pass has to have on under the union's collective agreement.

Cont'd on p. 31

Nosedive ends 1981 boom

After enjoying surging economic growth during the first nine months of 1981, the Yukon's economy began a sharp nosedive during the last quarter that shows no signs of levelling off.

That pattern is shown in the annual review for 1981, released today by the Yukon government's Economic Research and Planning Unit.

Employment was up strongly in the first nine months of last year, and then started to sag badly. "Signs of a slump in the mining sector were becoming evident in the

22% mining drop
17% inflation
30% jobless seen

fourth quarter," says Dan Lang, minister of economic development, in a statement accompanying the report.

Mineral production led the decline in 1981, as predicted by preliminary figures in January. The value of mineral production last year was \$208 million, the report says.

That compares to a final figure of \$360 million in 1980. Dropping silver and lead values were mainly responsible for the 22 per cent drop.

The number of people who had jobs in the territory peaked late last summer and then started plummeting. The total number of employees was 11,684 in September, 36 per cent above the 8,571 people who had jobs at the end of 1980. But by the end of last year, the number of people with jobs had dropped to 10,743. That meant 1981 saw an overall increase of 25.3 per cent in the number of people

Cont'd on p. 31

Cont'd from front

which tell you how many kilowatt hours of power you use. Then multiply that by 7.573 cents.

The average business in Whitehorse now uses 4,954 kilowatt hours a month at 8.352 cents each. The new cost will be 8.916 cents. The average monthly bill thus goes from \$413.76 to \$441.80.

In Carcross, Carmacks, Marsh Lake and Tagish, the average house now uses 457 kilowatt hours a month. Power now costs 11.807 cents per

house. After next month, it will cost 12.671 cents or \$57.91 per average house.

Ross River residences use an average 586 kilowatt hours a month. Power now costs a whopping 17.42 cents per kilowatt hour or \$102.08 a month for the average house. Power will cost 19.313 cents or \$113.17 per average household.

Haines Junction residences use an average 742 kilowatt hours. Power now costs 11.967 cents per kilowatt hour or \$88.79 a month for the average house. Power will cost 13.331 cents or \$98.92 per average household.

For the information of the

Board, NCPD also filed a rate designed to bring the Yukon closer to equalized power rates. The board has yet to decide that is a good thing, although it has already happened a little bit. If it does happen, it would likely mean the cost for a kilowatt hour of electricity would be the same in any Yukon community. In effect, it means hydro-supplied Whitehorse and Mayo residents would subsidize power users in small, diesel-only towns. Under that scheme, if adopted, power rates would go up even more here, to \$84.30 a month for the average household, rather than \$81.94 as NCPD's current proposal would require.

UNALAKLEET records will be

A group of Yukon River hours only 40

The top m Joe May, Jer Emmitt Petering, but are no

Weather co with winds gust three metres Unalakleet and

Other must kilometres east 12 hours by a trail along the at 6:05 last night. Twenty-th Unalakleet.

It is 436 kilometres Three-time champion banks area, without Smith to 1981, this race no

Layoffs

Cont'd from front

King said general freight, such as supplies for Yukon stores, has started to drop as the effects of mine layoffs — 88 at United Keno Hill in Elsa and 95 at Cyprus Anvil in Faro — ripple through the economy.

"We're seeing a fair bit of that and with the mining generally," he said. "That includes placer mining. We're very worried."

Everett Hamme, job steward for the Teamsters who work the Skagway rail yards, said layoffs there go into effect this weekend.

Eleven people have been

laid off in White Pass's trucking operations in British Columbia and Alberta, which King blames on economic conditions there.

Meanwhile, Hamme said

his union and White Pass have asked for a U.S. federal mediator following the breakdown of talks. The union's four-year contract expired in November.

**The Airport Cafe
will be closed
for renovations
March 19 & 20
March 26 & 27**

We are sorry for any inconvenience this may cause

Economy

Cont'd from front

holding jobs, though it dropped eight per cent in the last quarter.

The unadjusted unemployment rate in the Yukon was 9.7 per cent in December, 1981, well below the 22.5 per cent figure recorded in December 1980.

Colin Heartwell, director of the economic research and planning unit, said the drop reflects last year's booming tourist season and increased employment in the service sector.

"That grew substantially, and took up the slack in terms of the number of people previously unemployed."

But with the latest round of mining layoffs, he warned, the unemployment rate may easily surpass 30 per cent during the first quarter of this year.

Prices for most consumer goods was up 16.6 per cent last year, compared to about 12 per cent in southern Canada. Prices here are 21.6 per cent higher than Edmonton and 16.1 per cent higher than Vancouver. Food prices alone shot up 11.1 per cent here, 19.5 per cent in Dawson City and 8.3 per cent in Vancouver.

Rents in Whitehorse remained constant through the fourth quarter, with December rents being 19 per

rb auction

UNRESERVED PUBLIC AUCTION

TUESDAY APRIL 27, 1982 WHITEHORSE, YUKON. EQUIPMENT FROM: General Enterprises - as they re-align their equipment requirements. ALSO C.W. Friday Const. Ltd.

CRAWLER TRACTORS incl: 2- Cat D9H's; 2- Cat D9G's; 2- 1980 Cat D8K's; 1976 Cat D8K; 1975 Cat D8K; 4- Cat D8H's. WHEEL LOADERS incl: 1979 Cat 980C; 1974 Cat 966C; Cat 966B. MOTOR GRADERS incl: 1977 Cat 14G; 3- Cat 12E's; Cat 12. EXCAVATORS incl: 1973 P & H 412. ROCK TRUCKS incl: 1976 Cat 769 c/w 18:00 x 33 tires. MOTOR SCRAPERS incl: 3- 1980 Cat 827B's c/w Push-pull attachment, cushion-tires, 29.5 x 35 tires; 2- 1974 Cat 631C's c/w cushion-tires, 33.25 x 35 tires; 4- 1971 Cat 631C's c/w cushion-tires, 33.25 x 35 tires. COMPACTION incl: 1972 Cat 814; 2- 1978 Dynapac CA25D's Vib.; 1978 Bros SP 3000; Tempo RA2003. TRUCK TRACTORS incl: 2- Kenworth 924's; 2- Kenworth 923's. CENTRE DUMPS incl: 2- Decap T/A center dumps c/w 3 bays; 4- McCoy centre dumps c/w 3 bays.

FOR FURTHER INFORMATION AND TO CONSIGN EQUIPMENT, CONTACT WAYNE GILLIES IN WHITEHORSE AT 568-4747 OR CALL OUR PRINCE GEORGE OFFICE AT (604) 563-5711

Write or phone for FREE Brochure

WEEKEND FOR 16th annual women's with scheduled work accommodation March 26-28, Atlin. \$60. Info. & reg Women's Centre, 667

PHOTOGRAPHY Society of the Yukon Photographic Society, with Dr. C. Y. Professor of education Sat., March 27, 8:30 p.m. & 7-9 p.m.; Sun 28, 8:30-11:30 a.m., School. Info.: 667-5240 667-7507 eves.

JUNEAU FOLK FEST - Enjoy a trip to Charter flight leaving April 2, returning Sun 4. Details: Christine, 66

RIVERDALE SOUTH nomination meeting. March 23, 8 p.m., Riverdale Baptist Church, 32 Tutu Everyone welcome.

RIVERDALE NORTH L nomination meeting. March 23, 8 p.m., Riverdale Baptist Church, 32 Tutu Everyone welcome.

WHSE. NORTH CENTRAL NDP annual general meeting election of officers. T March 18, 7:30 p.m., Hall. Public is welcome.

YUKON CRAFTS SOCIETY

et alone the
ly knows his
Commission
e effective ear-
ncrease will be
hat consumers
simultaneously
low-water sur-
on increases slapped on by NCPC.
Yukon Electrical has calculated the im-
pacts of NCPC's latest increase.
In Whitehorse, it will cost the average
household another \$6.12 a month.
The average city household uses 1,082
kilowatt hours of electricity each month.
Right now the price, after all the fuel and
water adjustments are added, comes to 7.007

While Yukon Electrical uses a sliding rate
scale, depending on power used, you can still
do an easy calculation to get an idea how much
your power bills will be within a few cents.
Simply calculate how much power you use by
pulling out your copies of your power bill,

Cont'd on p. 31

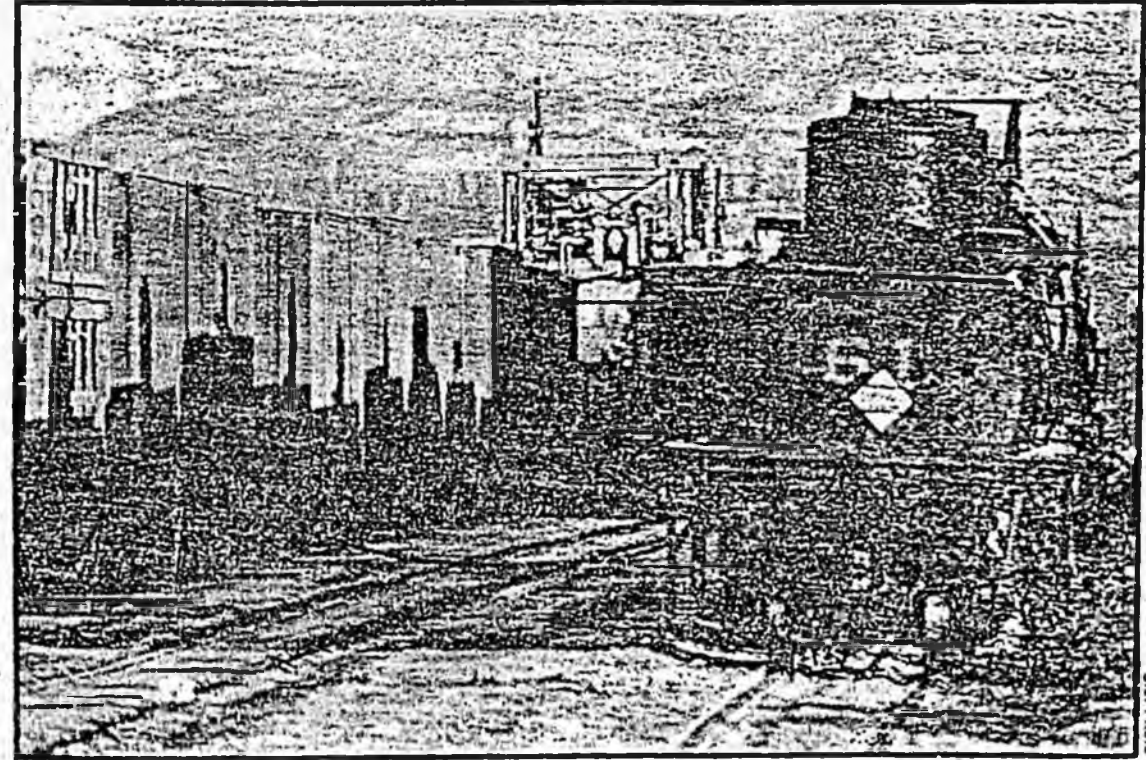
CARBORUNDUM
E. YUKON



Established
In 1900

Star, Wednesday, March 17, 1982

RAT RACE



IDLE TRAINS may become a familiar sight. White Pass rail crews have been cut to a minimum by layoffs that also affect the trucking division.

WP lays off 48

By MASSEY PADGHAM
Staff Reporter

White Pass is laying off 48 people in several of its divisions.

White Pass president Tom King blames the layoffs on a drop in freight hauling because of the generally poor economy.

Nineteen people in Whitehorse — 17 in trucking and two more in the rail operation — were laid off Friday.

Fifteen workers are also

being laid off from the rail division in Skagway and three more in the rail division in Seattle.

Yesterday, King was in Skagway to talk to union officials and warn them things may get even worse.

It's "just the volume of business," King said. "The volumes certainly are ... off from where they were in January."

A full train crew of five has been laid off in Skagway, barely weeks after being called back from the

traditional winter lull. Ten Teamsters in the rail yards are also being laid off.

"We're down to three (rail) crews," said Larry Jacquot, chairman of the Skagway local of the United Transportation Union. "We just put one on, anticipating an upturn ... (Now) we're cut back again." Three rail crews is the minimum White Pass has to have on under the union's collective agreement.

Cont'd on p. 31

Recession ends 1981 boom

ing economic growth
months of 1981, the
a sharp nosedive dur-
at shows no signs of

- 22% min ng drop
- 17% inflation
- 30% jobless seen

the annual review for 1981,
on government's Economic
ngly in the first nine months
ed to sag badly. "Signs of a
ere becoming evident in the

fourth quarter," says Dan Lang, minister of economic development, in a statement accompanying the report.

Mineral production led the decline in 1981, as predicted by preliminary figures in January. The value of mineral production last year was \$298 million, the report says.

That compares to a final figure of \$360 million in 1980. Dropping silver and lead values were mainly responsible for the 22 per cent drop.

The number of people who had jobs in the territory peaked late last summer and then started plummeting. The total number of employees was 11,684 in September, 36 per cent above the 8,571 people who had jobs at the end of 1980. But by the end of last year, the number of people with jobs had dropped to 10,743. That meant 1981 saw an overall increase of 25.3 per cent in the number of people

Cont'd on p. 31

Cont'd from front

... which tell you how many kilowatt hours of power you use. Then multiply that by 7.573 cents.

The average business in Whitehorse now uses 4,954 kilowatt hours a month at 8.352 cents each. The new cost will be 8.916 cents. The average monthly bill thus goes from \$413.76 to \$441.80.

In Carcross, Carmacks, Marsh Lake and Tagish, the average house now uses 457 kilowatt hours a month. Power now costs 11.807 cents per

for the average house. After next month, it will cost 12.671 cents or \$57.91 per average house.

Ross River residences use an average 586 kilowatt hours a month. Power now costs a whopping 17.42 cents per kilowatt hour or \$102.08 a month for the average house. Power will cost 19.313 cents or \$113.17 per average household.

Haines Junction residences use an average 742 kilowatt hours. Power now costs 11.967 cents per kilowatt hours or \$88.79 a month for the average house. Power will cost 13.331 cents or \$98.92 per average household.

For the information of the

Board, NCPC also filed a rate designed to bring the Yukon closer to equalized power rates. The board has yet to decide that is a good thing, although it has already happened a little bit. If it does happen, it would likely mean the cost for a kilowatt hour of electricity would be the same in any Yukon community. In effect, it means hydro-supplied Whitehorse and Mayo residents would subsidize power users in small, diesel-only towns. Under that scheme, if adopted, power rates would go up even more here, to \$84.30 a month for the average household, rather than \$81.94 as NCPC's current proposal would require.

Layoffs

Cont'd from front

King said general freight, such as supplies for Yukon stores, has started to drop as the effects of mine layoffs — 88 at United Keno Hill in Elsa and 95 at Cyprus Anvil in Faro — ripple through the economy.

"We're seeing a fair bit of that and with the mining generally," he said. "That includes placer mining. We're very worried."

Everett Hamme, job steward for the Teamsters who work the Skagway rail yards, said layoffs there go into effect this weekend.

Eleven people have been

laid off in White Pass's trucking operations in British Columbia and Alberta, which King blames on economic conditions there.

Meanwhile, Hamme said

his union and White Pass have asked for a U.S. federal mediator following the breakdown of talks. The union's four-year contract expired in November.

The Airport Cafe will be closed for renovations March 19 & 20 March 26 & 27

We are sorry for any
inconvenience this may cause

Economy

Cont'd from front

holding jobs, though it dropped eight per cent in the last quarter.

The unadjusted unemployment rate in the Yukon was 9.7 per cent in December, 1981, well below the 22.5 per cent figure recorded in December 1980.


Colin Keartwell, director of the economic research and planning unit, said the drop reflects last year's booming tourist season and increased employment in the service sector.

"That grew substantially, and took up the slack in terms of the number of people previously unemployed."

But with the latest round of mining layoffs, he warned, the unemployment rate may easily surpass 30 per cent during the first quarter of this year.

Prices for most consumer goods was up 16.6 per cent last year, compared to about 12 per cent in southern Canada. Prices here are 21.6 per cent higher than Edmonton and 16.1 per cent higher than Vancouver. Food prices alone shot up 11.1 per cent here, 19.5 per cent in Dawson City and 8.3 per cent in Vancouver.

Rents in Whitehorse remained constant through the fourth quarter, with December



UNRESERVED PUBLIC AUCTION

TUESDAY APRIL 27, 1982 WHITEHORSE, YUKON
EQUIPMENT FROM: General Enterprises - as they re-align their equipment requirements.
ALSO C.W. Friday Const. Ltd.

C. AWLER TRACTORS incl: 2- Cat D9H's; 2- Cat D9G's; 2- 1980 Cat D8K's; 1976 Cat D8K; 1975 Cat D8K; 4- Cat D8H's.
WHEEL LOADERS incl: 1979 Cat 980C; 1974 Cat 966C; Cat 966B. MOTOR GRADERS incl: 1977 Cat 14G; 3- Cat 12E's; Cat 12. EXCAVATORS incl: 1973 P & H 412. ROCK TRUCKS incl: 1976 Cat 769 c/w 18:00 x 33 tires. MOTOR SCRAPERS incl: 3- 1980 Cat 627B's c/w Push-pull attachment, cushion-tires, 29.5 x 35 tires; 2- 1974 Cat 631C's c/w cushion-tires, 33.25 x 35 tires; 4- 1971 Cat 631C's c/w cushion-tires, 33.25 x 35 tires. COMPACTION incl: 1972 Cat 814; 2- 1978 Dynapac CA25D's Vib.; 1978 Bros SP 3000; Tempo RA2003. TRUCK TRACTORS incl: 2- Kenworth 924's; 2- Kenworth 923's. CENTRE DUMPS incl: 2- Decap T/A center dumps c/w 3 bays; 4- McCoy centre dumps c/w 3 bays.

FOR FURTHER INFORMATION AND TO CONSIGN EQUIPMENT, CONTACT WAYNE GILLIES' IN WHITEHORSE AT 688-4747 OR CALL OUR PRINCE GEORGE OFFICE AT (604) 563-5711

Write or phone for FREE Brochure

UNALAKLEET

records will be... A group of Yukon River hours only 40

The top m... Joe May, Jer... Emmitt Peter... ing, but are no

Weather co... with winds gu... three metres... Unalakleet and

Other mus... kilometres eas... 12 hours by a... trail along the... at 6:05 last nig... ing. Twenty-L... Unalakleet.

It is 436 kil... Three-time cha... banks area, co... without Smith t... 1981, this race no



WEEKEND FOR... 6th annual women... with scheduled wo... accommodation... March 26-28, Atlin... \$60. Info. & re... Women's Centre, 66

PHOTOGRAPHY... of the Yukon Photog... Society, with Dr. C... lessor of education... Sat., March 27, 8... p.m. & 7-9 p.m.; Sur... 28, 8:30-11:30 a.m., S... School. Info.: 657-52... 667-7507.eves.

JUNEAU FOLK FE... — Enjoy a trip to... Charter flight leavi... April 2, returning Su... 4. Details: Christine, 6

RIVERDALE SOUTH... nomination meeting... March 23, 8 p.m., R... Baptist Church, 32 Tu... Eve. yone welcome.

RIVERDALE NORTH... nomination meeting... March 23, 8 p.m., Ri... Baptist Church, 32 Tut... Everyone welcome.

WHSE. NORTH CE... NDP annual general m... election of officers... March 18, 7:30 p.m... Hall. Public is welcome

YUKON CRAFTS

BORUNDUM
YUKON



Established
In 1900

Anvil — closed this summer?

Barely hours after 95 people got layoff notices, the unions at the Cyprus Anvil mine in Faro have been warned to expect a summer vacation shutdown.

Robert McCallum, vice-president of operations for the mine, said the decision has not yet been made at the company's head office in Vancouver.

"I would think at this time that the decision will likely be made next week," he said. "It's being very carefully studied in the corporate office."

Any shutdown would have a very definite ripple effect. About 100 White Pass workers depend directly on hauling concentrates for Anvil.

"If Anvil closes down for a period of time, then we will have a subsequent layoff," White Pass president Tom King said flatly.

Cont'd on P. 2

Thursday, March 18, 1982

Iditarod update

SHAKTOOLIK, Alaska — Rick Swenson and Jerry Austin arrived here within three seconds of each other at 1:30 this morning, but did not continue in the face of extremely strong winds. The next section is 100 kilometres of open, glaring sea ice.

Dave Monson and Bob Chulpach munched in at 1:35 a.m.; Emmitt Peters at 3:20 a.m. and Susan Butcher and Herbie Nayokpuk at 3:30 a.m., Joe May at 6:15 a.m. and Rick Mackey and Dean Osmar at 6:50 a.m. after getting lost.

"It was blowing snow so hard I couldn't see the trail," Mackey said.

See story — page 3

THUR



ALWAYS CARRY A

PHOTO BY RICK VAN SICKLE

By MASSEY PADGHAM
Staff Reporter

Anvil workers got the bad layoff news last night, a week after their employer said it was coming.

Robert McCallum, vice-president of operations at the Cyprus Anvil mine, said 95 of its 770 workers will file out of the lead-zinc-silver mine for the last time on March 26.

McCallum delivered the news to executives of the two Steelworkers union locals in a meeting yesterday afternoon.

"We have identified that there are 95 employees that will be part of this reduction of forces," McCallum said last night.

The first layoffs are among the 12 temporary workers, most of them doing clean-up work around the mill. They are being laid off first as required by the unions' collective agreement.

The largest group of layoffs, 44, comes from the production workers group, Steelworkers Local 1051. There are about 540 members of this Local. Ten of the temporary workers also belong to this local.

Another 19 people will come from the office and technical workers group, Steelworkers Local 8243, which has about 90 members.

Twenty salaried employees, the management and administrative level of the mine, will be laid off, reducing the staff size from 125. McCallum said they would come from all departments.

The individual workers were to be notified this morning and will work their last shift on March 26.

McCallum called the layoffs a permanent reduction of the workforce. Despite the layoffs, the company, at least for now, will maintain full production of about 10,200 tonnes of ore daily. No call-back of workers will happen, although when times get better the size of the work force may gradually rise.

As Anvil president John Bruk puts it, you take it "easy" a bit in good times. Bruk said Anvil's staff now is more highly trained than before and so is more

productive.

McCallum said the union officials sat and listened to the company's news, without immediate comment. They were to meet again with the company this afternoon.

MLA Maurice Byblow (NDP-Faro) termed the day "Black Tuesday."

He said because each worker accounts for three other people through family and indirect work, the net effect of the Anvil layoff and the departure from Elsa Monday of most of the 88 people laid off there is a loss of about 700 people or three per cent of the people in the Yukon.

While he said he hopes businesses in Faro can tighten their belts and survive, Byblow, co-owner of the Faro Hotel, is worried some newer businesses may be forced to close.

"We have to look at diversifying our economy," he noted.

McCallum said the company has suggested the company and the union form a consultative committee through the Canada Employment Centre to try to find jobs for the laid-off workers, a difficult task given the country's sagging economy. Employment officials are expected to be in Faro Friday.

The mine in Faro is not the only sector of the Cyprus Anvil operation that is going to get cutbacks.

Bruk said Monday a full review of corporate organization by three senior executives is expected to recommend cuts of some people in the Vancouver office and those cuts will be made. How many people will be laid off in Vancouver is not yet known.

"As far as the Vancouver office is concerned," Bruk said, "of course, we are in the process for rationalizing and streamlining the Vancouver operation, and the re-organization that is being announced to the employees is applicable throughout."

The three executives on the top-level committee — McCallum; Bert Cook, senior

Whe

"Black Tuesday That, says a leader, is probably description of y. layoff of 95 work Cyprus Anvil mine

While union me the layoffs as ine metal prices tumb mine's costs rise, union local at the spoiling for a fight the mine is going at off the workers.

Dave Power, pr the production group, Steelwork 1051, said speci meetings are being 10:30 a.m. and 6 p sday to explain raised by the local's at a meeting last Faro.

"It looks like we'r of disagreement c layoffs are administ

vice-president for m and Glen Simpson, vice for exploration — ha given wide-ranging p Bruk. They are to repo end of the month.

They are designi organization plan becau poor economy and the last summer that turn from being a public company into a whol subsidiary of Hudson's and Gas Company Lt wholly owned by Petroleum.

That change will se tions in the labor throughout and re-assign authority, Bruk said.

Now that Dome owns completely, Bruk is se meet with Dome official next couple of weeks t Anvil's future. There h speculation that Dome, to reduce its \$5-billion de might sell Anvil, which i for \$340 million last sum Cominco, the world's lead-zinc producer.

NCPC 'taxing' Anvil illegally?

By MASSEY PADGHAM
Staff Reporter

Cyprus Anvil lawyers began laying the groundwork yesterday for expected arguments that the Northern Canada Power Commission's proposed rate structure is illegal.

Anvil is furious at increased power bills, and president John Bruk has said it threatens the long-term viability of the mine.

If Anvil's arguments at the Yukon Electrical Public Utilities Board hearings are to no avail, Anvil could take the commission to court, said company lawyer Laurie Pathman.

Anvil argues, and NCPC admits, that the mine has paid

officials to justify those rates. NCPC says its act gives it the authority to set the rates.

Anvil officials have said they don't want Yukoners to subsidize the mine, they just want a fair deal.

Pathman also wanted information from 1969 to 1975 to indicate how much Anvil has been paying above what it considers a fair price. That information only started becoming available in 1975, and it is only since then that NCPC can say for sure that Anvil has been paying 100 to 130 per cent of the actual cost of its power. Anvil uses about one-quarter all the power generated in the Yukon.

possibility, but no decision has been made by Anvil officials.

If NCPC did have money back, it would likely be returned to Yukon consumers.

Pathman pointed out I City residences, for example, only half what it really costs NCPC to supply them with power from the town's diesel generator.

She suggested to the court that NCPC has no legal powers, but Anvil's rates could be considered an indirect tax.

So far, Anvil has only been cross-examining NCPC witnesses. The real fireworks will come when Anvil officials go to court and company lawyers present their arguments.

in all divisions, even HQ

'Where am I going to go?'

"Black Tuesday."

That, says a Faro union leader, is probably the best description of yesterday's layoff of 95 workers at the Cyprus Anvil mine.

While union members see the layoffs as inevitable, as metal prices tumble and the mine's costs rise, the major union local at the mine is spoiling for a fight over how the mine is going about laying off the workers.

Dave Power, president of the production worker's group, Steelworkers Local 1051, said special union meetings are being called for 10:30 a.m. and 6 p.m. Thursday to explain concerns raised by the local's executive at a meeting last night in Faro.

"It looks like we're in a sort of disagreement over how layoffs are administered," he

said.

"We have another meeting- (today) with the company at 2:30," Power said. "There's some problems with how they're going about this, this layoff. We'll be asking them questions."

Power said the Canadian government has to be blamed for blundering the economic situation in the Yukon.

"I guess we'll have to expect more of this in the future."

"We don't give too much praise to the way the Conservatives are handling things in the Yukon either," he added bitterly.

"I've talked to quite a lot of people today who just shake their head and say, 'Where am I going to go.'"

Power said he cannot say much about the disagreement with the company, until the

meetings Thursday about the union's concerns.

But they are known to include a dispute over what kind of transportation help Outside the laid-off workers will get.

There is also a dispute over who will be laid off. The actual notices to individual workers have not yet gone out, but the union wants to make very sure the most recently hired employees are the first to go.

Another problem is the length of notice. The company is giving workers 10 days' notice. The union is expected to argue at least 14 days' notice is needed and even more for workers with at least two or three years of experience.

"It seems like we're going in one direction and the company's going in another."

vice-president for marketing, and Glen Simpson, vice-president for exploration — have been given wide-ranging powers by Bruk. They are to report by the end of the month.

They are designing a re-organization plan because of the poor economy and the change last summer that turned Anvil from being a publicly-traded company into a wholly-owned subsidiary of Hudson's Bay Oil and Gas Company Ltd., itself wholly owned by Dome Petroleum.

That change will see reductions in the labor force throughout and re-assignment of authority, Bruk said.

Now that Dome owns Hubday completely, Bruk is seeking to meet with Dome officials in the next couple of weeks to chart Anvil's future. There has been speculation that Dome, in order to reduce its \$5-billion debt load, might sell Anvil, which it bought for \$340 million last summer, to Cominco, the world's largest lead-zinc producer.

possibility, but no decision has been made by Anvil officials.

If NCPC did have to pay money back, it would come from Yukon consum

Guild Productions'

GIANT

TELEVISION BINGO

Wed. March 24/7:30 - 10 pm

W.H.T.V. Channel 9

13 GAMES! PLUS **13 GAMES!**
Live Entertainment

- 10 small games for at least \$25.00 each
- 2 blackout games for at least \$100.00 each
- 1 jackpot game for at least \$250.00!!!

Jackpots may be bigger if card sales are high!

ALL PROCEEDS TOWARD THE

illegally?

e rates.
s it the
s.
aid they
ubsidize