

DEPT.

of

Ed

READ

AN OVERVIEW OF  
THE  
DEPARTMENT OF HEALTH AND SOCIAL SERVICES

February 19'

## DIVISION OF ADMINISTRATIVE SERVICES

The Division of Administrative Services provides needed services to the department's program divisions, offices and agencies, plus the commissioner's office. Included services are personnel, supply, fiscal, accounting, federal financial reporting, budget preparation and execution, expenditure monitoring and control, contract administration, employee payroll, mail/messenger and graphic arts. The civil rights and equal employment opportunity programs are also coordinated through this division.

## DIVISION OF CORRECTIONS

The state-operated adult institutional programs provided custody and treatment programs for an average of 711 prisoners each day during FY 78. The division continued to obtain services by contract from the Federal Bureau of Prisons at a level averaging 45 prisoners during the year, and also continued to contract with local jails for temporary services at Kodiak, Kenai, Bethel, and Sitka. The following operational changes were made with respect to adult correctional centers:

The opening of the Ridgeview Correctional Center in December 1977 heralded the first exclusively women's program correctional center in the State. Although available funds in FY 78 fell considerably short of renovation needs, the facility is operational and secure, and further renovations are planned for FY 79. The facility appears to have satisfied the Human Rights Commission's formal complaint, by providing more suitable housing and programs. Adult basic education, drug and alcohol counseling, cooking, needlework, and recreational activities are now available. The facility has a limited capacity of 28 and has maintained a population

near that level since December.

The 3rd Avenue Correctional Center has been changed to house maximum security prisoners as well as medium and minimum security prisoners for the purpose of classification, transferring persons to institutions throughout the state in order to place the prisoner in the institution which most nearly fits his needs. A prisoner's average length of stay at 3rd Avenue is six (6) weeks.

The 6th Avenue Correctional Center houses only pre-trial and unsentenced prisoners. It is no longer a program facility. Its primary purpose is to serve the Anchorage area as an intake facility for all arrested offenders in the Anchorage area.

The Nome State Correctional Facility came on line as a State facility on October 1, 1977. Formerly the facility was managed by the City of Nome, Alaska. The Nome Facility is rated at 30 beds and is staffed by 11 correctional employees. The Nome Facility is now handling nearly twice as many offenders as it did when it was a city jail.

The Division of Corrections provided services to a daily average of 130 youths in the state-operated McLaughlin Youth Center. Additionally, through contracts for specialized care, an average of 40 youths received services outside the state. The majority of youths for whom the division is responsible received care under community placement through probation services. During FY 78 the probation/parole information system provided services for 62 average workload units per month per probation.

AJIS terminals have been installed and are operational in all Alaska Correctional Institutions and in the Regional Probation and Parole Office, except Nome, and all stations are connected to the central records room in Juneau. There are 13 terminals presently operating. The system frequently handles more than 300 messages per day. The messages provide a flow of management information to and from the central office and between the institutions. The system is used to facilitate the transfer of prisoners, to provide statistical information (morning counts, etc.) and to issue requests and directives. It also provides (daily) personnel information and data on juvenile incidents as well as facilitating file searches and number assignments and is used to issue NLETS information to a nation-wide justice reporting system.

The need to develop and implement a statewide medical care program became more evident in FY 78. Statewide medical costs approached \$0.75 million, and the continued upward trend in prisoner population dictated the move toward medical care standardization. A federal grant--a medical care demonstration project for jails--was secured, and a medical administrator has been employed. It is expected that medical care for prisoners will not only be improved, but cost reductions and avoidance of costly lawsuits will be realized. X

A Corrections Career Ladder Program has been developed with a balanced emphasis on the need for the public safety through improved security staffing patterns, and the establishment of a formal structure for treatment staff trained for specializing in the development, operation, and evaluation of reformatory programs for prisoners. The Career Ladder is designed for maximum flexibility in staffing through the use of a

component structure that may be tailored to meet specific or unique staffing needs. A major problem has been, and continues to be, the lack of sufficient state funds to meet training needs, rather than relying on the use of grant funds for 50% of the training programs.

#### DIVISION OF MENTAL HEALTH AND DEVELOPMENTAL DISABILITIES

The Division of Mental Health and Developmental Disabilities is responsible for the development, implementation, and administration of programs for the prevention and treatment of mental illness and for the habilitation of developmentally disabled persons. The division also seeks to further public awareness of mental health and developmental disabilities.

The division provides in-patient psychiatric services at the Alaska Psychiatric Institute, a 200-bed JCAH accredited acute-care facility for the mentally ill. Harborview Developmental Center in Valdez, a 120-bed certified Intermediate Care Facility for the Mentally Retarded (ICF/MR), provides care, training, education and habilitation for the developmentally disabled. In addition, the division operates regional mental health offices in Anchorage, Fairbanks, and Juneau to provide statewide coordination, development, and technical assistance for community mental health services.

The division is currently providing grants-in-aid to 19 locally controlled and operated community mental health centers located throughout Alaska. In addition, services for the developmentally disabled are provided at the local level under contractual agreements administered by the division. These community based developmental disabilities services are located in

Anchorage, Fairbanks, Juneau, and Ketchikan.

Services to the courts and the Division of Corrections are provided, for the most part, at the recently opened Psychiatric Security Unit at the Alaska Psychiatric Institute. This 14-bed unit is a medium security unit providing evaluations and observations for the court and short-term treatment for the mentally ill offender.

The Governor's Mental Health Advisory Council and the Governor's Council on the Handicapped and Gifted provide advice and recommendations to the division concerning the delivery of services to the mentally ill and the developmentally disabled.

#### DIVISION OF PUBLIC ASSISTANCE

The Division of Public Assistance administers the following programs: Adult Public Assistance, Aid to Families with Dependent Children, Food Stamps, General Relief, Medicaid, and General Relief Medical.

Regional offices are maintained in Juneau, Anchorage, Fairbanks, Bethel, and Kotzebue to supervise 20 district offices. There are 149 full-time and 11 part-time positions within the division. The division has a fiscal 1979 budget appropriation of approximately \$75 million, of which 47 per cent is federally funded.

During FY 1978, medical care was provided to approximately 12,500 Medicaid recipients at a cost of \$25.8 million (50 per cent federally funded).

Services covered by Medicaid include in-patient and out-patient hospital,

laboratory and x-ray, skilled nursing and intermediate facility care, physician's services, early and periodic screening, diagnosis and treatment, home health, transportation, optometrist's services, eyeglasses, treatment for speech, hearing and language disorders and in-patient psychiatric care.

Individuals not eligible for Medicaid may be eligible to receive help from General Relief-Medical. In FY 1978, \$6.2 million (100 per cent state funded) were spent on services similar to those provided under the Medicaid program with the exception of home health and screening programs.

Benefits totalling \$5.25 million were paid to recipients of Adult Public Assistance during FY 1978. Payments by program during the year were: Old Age Assistance, average payment of \$112.78 was made to 1,849 recipients each month for total of \$2.5 million; Aid to the Disabled, average payment of \$135.48 to 1,633 recipients each month with total payments of \$2.15 million; Aid to the Blind, average payment of \$131.51 to 66 recipients each month with total payments of \$104,200.

Persons not eligible for financial assistance under any of the categorical programs may be eligible for General Relief. Through this program emergency help such as one-time payment to vendor for rent or fuel is available. The total paid during FY 1976 under the General Relief program was \$500,900.

Financial aid totalling \$16 million was paid to 11,821 recipients eligible for Aid to Families with Dependent Children with an average payment of \$113.09 per month.

The new Catastrophic Illness Program provides medical assistance to eligible applicants who have experienced a single illness or injury during a 12-month period which, after all other sources of payment have been exhausted, leaves medical expenses of more than \$1,000. The total amount expended during FY 78 was \$450,000.

Approximately \$2.49 million was spent on determination of eligibility for all programs administered by the division. Determination of eligibility is done by 78 eligibility workers located throughout the state.

#### DIVISION OF PUBLIC HEALTH

During FY 78, the Division of Public Health continued to provide preventive medical and environmental health services to the citizens of the state. Significant accomplishments include:

- A statewide immunization program aimed particularly at infants and preschool children. A survey of children entering school showed that 98.3% had received all required immunizations. This figure exceeds the national goal set by HEW.

- Provision of some 335,000 public health nursing services to people in all parts of the state. The types of services included maternal and child health, communicable disease control, screening for diseases, acute care and preventive services in mental health, substance abuse and accident prevention.

- Provision of new leased space for health centers in Nome and Wasilla and modification of health centers in Kake, Hoonah, Kenai,

Dillingham, and McGrath to permit more effective services and better coordination of state programs with those of regional native health corporations.

-Development of standards and regulations for Metabolic Screening of Newborn Infants. The implementation of these standards and regulations places Alaska among the top five states with screening programs for early detection of metabolic disorders leading to mental retardation.

-Granting of interim approval to four (4) local laboratories in the state for microbiological examination of water samples from public drinking water supplies. This marks the first time in Alaska that non-state laboratories have been approved for this service.

-Isolation and identification of the three influenza virus strains involved in the past winter's flu season. Screening of over 900 specimens submitted on suspected influenza cases, confirmed that the so-called Russian (USSR) strain cases were restricted to military personnel and not present in the civilian population.

-Strengthening of the otitis media program in the Bethel area.

-Issuance of educational materials on management of commercial food service activities and on prevention of botulism in home prepared foods.

-Production of 37 programs on public health issues which were shown as part of the Alaska Television Satellite Demonstration Project.

-Production of new educational materials which included two coloring

books for the otitis media project; pamphlets describing the services and special clinics for four (4) different health centers, grocery bag stuffers for "Week of the Young Child," Wrangell TB Clinic, "No Shots - No Day Care," Hearing Screening and Noise-Induced Hearing Loss. Pamphlets were designed for Handicapped Children's Program, Botulism, Ear Aches and Draining Ears, and After a Tympanoplasty Operation.

-Completion of data entry of Southeastern Regional facilities health data in the Patient Care Information System. This system which will be used by state-operated health centers and Alaska Native Health Service facilities will make a significant contribution towards improved patient care by providing current surveillance lists for needed follow-up on patients and eliminating duplication of services.

#### DIVISION OF SOCIAL SERVICES

The Division of Social Services, through its six (6) regional offices and 37 field offices, provided statewide child and adult protective services in response to problems of neglect, abuse or exploitation. The division served more than 4,800 children and over 350 adults through these services. Of the more than 4,800 children served, 70% received supportive services while residing in their own home. Another 1,256 children received services while residing in foster care arrangements.

In addition, the staff of the division provided information and referral services for more than 5,000 individuals to help them to identify and utilize appropriate services provided by other public and private agencies. Individual and family counseling was provided for over 2,700

individuals by the social work staff.

Services made available for clients for the Division through purchase arrangements with private contractors included protective services, day care for over 200 children, and homemaker services for over 500 individuals and families.

#### OFFICE OF ALCOHOLISM AND DRUG ABUSE

The Office of Alcoholism and Drug Abuse was administratively combined in FY 78. There are still separate statutes and two (2) separate Advisory Boards for Alcoholism and Drug Abuse.

The Office funds 26 alcoholism prevention, treatment or rehabilitation programs in Anchorage, Fairbanks, Kotzebue, Nome, McGrath, Bethel, Napaskiak, Unalaska, Dillingham, Copper River, Tok, Kodiak, Kenai, Yakutat, Juneau, Sitka, Hoonah, Kake, Petersburg, Wrangell, and Ketchikan. Many of those programs are co-funded by the Division of Mental Health and Developmental Disabilities, the Criminal Justice Planning Agency, C.E.T.A., the Indian Health Service and the Veterans Administration. Major efforts this year are being made to solidify working relationships between these programs and other interested agencies, including the criminal justice system, mental health and social services programs, and the schools. It is estimated that more than 5,000 clients will utilize these programs during FY 79.

The Office funds 11 drug abuse prevention, treatment and rehabilitation programs in Anchorage, Fairbanks, Nome, Dillingham, Sitka, Petersburg,

and Ketchikan. Services range from youth recreation and counseling programs in Fairbanks, Petersburg, Sitka, and Ketchikan, to methadone maintenance programs for hard drug addicts in Anchorage and Fairbanks. The projection is for more than 1,000 clients to utilize these services during FY 79.

In both Alcoholism and Drug Abuse, there is a heavy demand for increased prevention programming, training for program staff and boards, and better evaluation technology for programs, including outcomes of treatment.

There is on file in the State Office a total of \$6 million in requests for alcoholism programs, as well as a total of \$2 million of requests for Drug Abuse programming, for a combined total of \$8 million. Total available FY 79 funds for the Alcoholism program amount to \$2.6 million, while for Drug Abuse, the total is \$9 hundred thousand. The State Office of Alcoholism and Drug Abuse estimates that approximately 40% of the need expressed by local communities is currently being met.

#### OFFICE OF STATE HEALTH PLANNING AND DEVELOPMENT

Increased responsibilities led to the reorganization of the Office of Planning and Research into two (2) separate units, the Office of State Health Planning and Development (OSHPD) and the Office of Information Systems (OIS). These new offices will concentrate on the areas of health planning and data collection and analysis in order to provide the department with necessary information for the delivery of human service programs.

More specifically, the Office of State Health Planning and Development (OSHPD) is responsible for implementing the National Health Planning and Resource Development Act (P.L. 93-641) and licensing and certifying all state medical facilities.

P.L. 93-641 provides for the coordination of health planning efforts at the local, regional, and state levels. In Alaska, this planning effort is coordinated through the OSHPD in conjunction with the three (3) regional health system agencies and the Statewide Health Coordinating Council, who have just completed a proposed State Health Plan. The planning scheme attempts to prevent a duplication of effort and to allow efficient and optimum use of valuable resources. By lending technical assistance and expertise to local and regional planning, a more uniform approach to solving Alaskan health problems will be realized.

The Office of State Health Planning and Development is also responsible for licensing and certifying all state medical facilities. This includes those facilities that are providing part or all levels of care under Medicaid and Medicare.

#### OFFICE OF INFORMATION SYSTEMS

The new Office of Information Systems (OIS) has retained all of the responsibilities of the data services unit that was located within the former Office of Planning and Research. The main focus of OIS remains programming and systems analysis for all department divisions and offices. Support is also provided for new department projects that require immediate analysis for decision-making at the division level. OIS also

provides statistical reporting and research for all divisions and offices, so that the ever increasing population will continue to be served effectively by the department and its human services programs.

Under the new organization, the Bureau of Vital Statistics and the State Center for Health and Social Statistics report directly to the Coordinator of OIS. This management scheme provides for the assimilation and distribution of data information within the department on a uniform basis and without duplication of effort. Office of Information Systems is currently developing a common data base for use by the department to provide a more effective long range delivery of services.

#### OFFICE ON AGING

The Office on Aging increased the numbers of hot meals served to senior Alaskans by more than 20%, and increased the amount of transportation provided to the elderly by the same percentage. New meal sites were developed, or the number of meal sites was increased, in Haines, Hydaburg, Pelican, Petersburg, Sitka, Palmer, the Cook Inlet Native Association in Anchorage, and Nenana. Cordova, Dillingham, and Bethel have new general senior centers, which were provided under Title III.

For the first time, the Department, through the Office on Aging, placed approximately 125 persons age 55 or over in part-time employment under Title IX of the Older Americans Act. These senior citizens work for a maximum of 1,300 hours per year, largely in community service activities, including the provision of in-home services for other elderly citizens.

In those areas where the federal government has built housing for the elderly, the Office on Aging has attempted to provide a network of services based in the home community to help senior citizens remain at home. Programs were started in Juneau, Anchorage, Fairbanks, and Ketchikan.

The Governor's Task Force on Aging met several times during FY 78 under the leadership of the Governor's Division of Policy Development and Planning. The Task Force held public hearings and established specialized sub-groups to examine the needs of the elderly. The effort initiated by the Task Force is being continued by the Department of Health and Social Services in its focus on Alternative Care for Senior Alaskans. As a part of the latter project, the Department made a presentation to the Governor, to public groups, and the House Health, Education and Social Services Committee of the Legislature.

#### OFFICE OF INTERNAL REVIEW

The Office of Internal Review has the responsibility for: (1) audit of contracts, grants, hospitals and nursing homes funded by the Department; (2) collections of monies owing to the Department where recovery has proven to be difficult; and (3) investigation where fraud is suspected in any of the department programs, but primarily in the Public Assistance programs including Food Stamps and Medicaid. It is the goal of this unit to reduce unauthorized expenditure of federal and state tax dollars by identifying overpayments made to contractors, grantees, and medical providers; to recover funds identified as owing to the department; and to reduce fraud through vigorous prosecution of persons found claiming

benefits as a result of willful misrepresentation. A system to identify and recover funds where third party liability exists for medical services is being developed.

#### BOARD OF PAROLE

The Parole Board staff during FY 78 continued to provide professional support and training for the members of the Board of Parole and the staff of the Division of Corrections. Staff maintained files, conducted hearings, and administered the operation of the parole system in Alaska.

Staff also continued to provide expertise for policies and procedures development as well as administrative, research and clerical support.

EMPLOYMENT

Total number of employees authorized on July 1, 1978 . . . . .	1,741
Total number of permanent employees on July 1, 1978 . . . . .	1,686

BUDGET

FY 78 (Including continuations, supplementals, revisions)

Total budget - State funds . . . . .	106,045,636
Total budget - Federal funds . . . . .	49,050,875
TOTAL . . . . .	<u>155,096,511</u>

Expenditures - State funds . . . . .	93,145,638
Expenditures - Federal funds . . . . .	43,602,156
TOTAL . . . . .	<u>136,747,794</u>

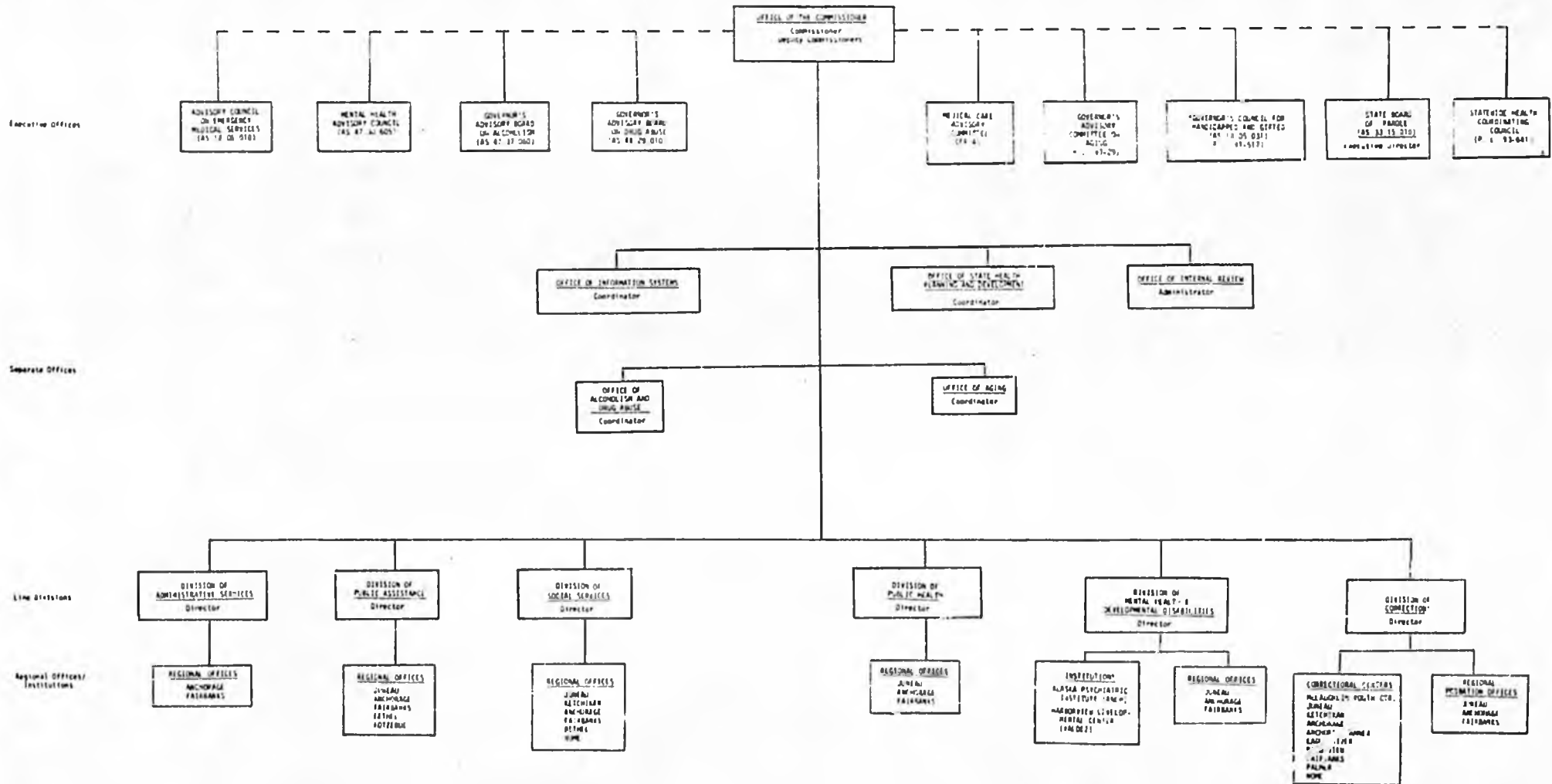
COSTS

FY 78 (Average Monthly Payment)

<u>Programs</u>	<u>Per Person</u>
Division of Social Services	
Foster homes . . . . .	285.00
Division of Public Assistance	
Old age assistance . . . . .	112.78
Aid to the disabled . . . . .	135.48
Aid to the blind . . . . .	120.60
Aid to families with dependent children . . . . .	113.09
Division of Mental Health	
Alaska Psychiatric Institute: Average cost per patient/day . . .	185.00
Harborview Developmental Center: Average cost per patient/day .	116.05
Division of Corrections	
Average cost statewide for keeping an adult in a state facility .	53.67
Average cost statewide for keeping a juvenile in a state facility . . . . .	74.95

DEPARTMENT OF HEALTH AND SOCIAL SERVICES

Unit Organization Chart



Executive Offices

Separate Offices

Line Divisions

Regional Offices/Institutions

EXPLANATORY NOTE  
\* Also advisory to the Department of Education

APPROVED: *Alvin D. Robinson*  
Commissioner, Department of Health & Social Services  
*Richard A. ...*  
Commissioner, Department of Administration  
*M. C. ...*  
Governor of Alaska

EFFECTIVE DATE: September 18, 1976

**DEPARTMENT OF HEALTH AND SOCIAL SERVICES**  
**Administration and Support BRU**

OFFICE OF THE COMMISSIONER  
 Commissioner (PK) R/31 0001  
 Secretary III (PK) R/12 0002

DEPUTY COMMISSIONER FOR PROGRAM MANAGEMENT  
 Deputy Commissioner (PK) R/28 0269  
 Secretary II R/11 0271

DEPUTY COMMISSIONER FOR ADMINISTRATIVE MANAGEMENT  
 Deputy Commissioner (PK) R/28 0268  
 Secretary II R/11 0006

OFFICE OF SPECIAL ASSISTANT  
 Special Assistant (PK) R/23 0289  
 Information Officer II R/17 0296  
 Secretary I R/10 0044

*Janis Stiles*

DEPUTY COMMISSIONER FOR FIELD OPERATIONS (ANCHORAGE)  
 Deputy Commissioner (PK) R/28 0005  
 Secretary II R/11 0270

DIVISION OF ADMINISTRATIVE SERVICES

DIRECTOR/REGIONAL OFFICES

Office of the Director  
 Director, Admin Services R/26 0022  
 Administrative Officer II R/19 0041  
 Administrative Assistant II R/14 0013  
 Secretary I R/10 0097  
 Clerk Typist III R/8 0073

Southcentral Regional Office  
 Adm Officer I:1 (Reg Adm) R/21 0054  
 Clerk Typist III R/8 0071

Northern Regional Office  
 Adm Officer I (Reg Adm) R/17 0061  
 Clerk Typist III R/8 0062

PERSONNEL OPERATIONS SECTION:

SERO  
 Personnel Officer IV R/22 0007  
 1) Accountant V R/29 0010  
 Asst Personnel Officer II R/18 0087  
 Personnel Assistant II R/14 0107  
 Administrative Assistant II R/14 0015  
 Accounting Clerk II R/9 0092  
 Accounting Clerk II R/9 0016  
 2) Accounting Clerk I: R/7 0061  
 Clerk IV R/9 0095  
 Clerk Typist III R/8 0009  
 Clerk Typist III R/8 0108  
 Clerk Typist II R/7 0003

SCRO  
 Asst Personnel Officer III R/20 0064  
 Asst Personnel Officer I R/16 0056  
 Personnel Assistant I R/12 0008  
 Accounting Clerk II R/9 0065  
 Clerk Typist III R/8 0072  
 Clerk I R/6 0046

NRU  
 Personnel Assistant I R/12 0050

GENERAL SERVICES/SUPPLY  
General Services

SERO  
 Supply Officer IV R/19 0023  
 Mail Clerk Carrier III R/9 0029  
 Supply Clerk II R/9 0025  
 Teletype Operator I R/8 0081  
 Supply Clerk I R/8 0090

SCRO  
 Supply Officer II R/16 0066  
 Supply Assistant I R/12 0059  
 Clerk Typist III R/8 0058  
 Messenger R/6 0094

NRU  
 Supply Clerk I R/6 0063

GRAPHIC ARTS  
 Graphic Artist II R/15 0040  
 Graphic Artist I R/13 0041

*Ben Nelson*

FINANCIAL MANAGEMENT

<u>Management and Budget Section</u>		<u>Expenditure Unit</u>	
Program Budget Analyst V	R/22 0047	Accountant V	R/18 0011
Program Budget Analyst IV	R/20 0093	Accountant I	R/16 0245
Program Budget Analyst III	R/18 0004	Accountant II	R/14 0164
Program Budget Analyst III	R/18 0295	Accountant I	R/14 0098
Program Budget Technician	R/12 0085	Accounting Clerk III	R/12 0196
<u>Financial Operations Section</u>		Accounting Clerk III	R/10 0103
Finance Officer IV	R/22 0057	Accounting Clerk III	R/10 0105
Finance Officer III	R/20 0028	Accounting Clerk III	R/10 0020
Clerk Typist III	R/8 0048	Accounting Clerk III	R/10 0014
Clerk Typist III	R/8 0092	Accounting Clerk II	R/9 0087
<u>Revenue Unit</u>		Accounting Clerk II	R/9 0049
Accountant IV	R/18 0088	Accounting Clerk II	R/9 0021
Accountant III	R/16 0012	Accounting Clerk II	R/9 0018
Accounting Clerk II	R/9 0096	Accounting Clerk II	R/9 0017
<u>Contracts/Leasing Unit</u>		Clerk Typist II	R/7 0102
Contracts Officer I	R/14 0052		

EXPLANATORY NOTE:  
 1) A reclassification is pending for this position.  
 2) This position to be transferred to Revenue Unit.

RECAP - AUTHORIZED POSITIONS:

	<u>F/T</u>
Commissioner's Office	11
Director/Regional Offices	9
Personnel Operations	19
General Services/Supply	10
Financial Management	28
Graphic Arts	2
<b>TOTAL POSITIONS</b>	<b>79</b>

August 1, 1978

**DEPARTMENT OF HEALTH AND SOCIAL SERVICES**  
**BUDGET ORGANIZATION CHART - FY 1979**  
 (THOUSANDS OF DOLLARS)

**DRAFT**

01 OFFICE ADMINISTRATION AND SUPPORT				
Sub-Program	Auth. Pos.	Total Funds	Fed. Funds	
Comm. Office	11/0	11	0	
Off. Dir. Adm. Serv.	1/0	9	0	
Personnel	18/0	19	432.3	
Supplies	10/0	10	230.3	
Finance Oper.	7/0	8	221.7	
Graphic Arts	2/0	2	51.7	
Human Serv.	3/0	3	156.0	
<b>Totals</b>	<b>57/0</b>	<b>62</b>	<b>2,067.0</b>	<b>(0)</b>

01 OFFICE OF INTERNAL AFFAIRS				
Sub-Program	Auth. Pos.	Total Funds	Fed. Funds	
Admin.	3/0	3	66.2	
Public	0/0	0	416.4	
Collection	7/0	7	30.1	
Food Invt.	3/0	3	116.7	
Contract Int. Adm.	0	0	65.0	
<b>Totals</b>	<b>13/0</b>	<b>13</b>	<b>734.4</b>	<b>(0)</b>

01 OFFICE OF INFORMATION SYSTEMS				
Sub-Program	Auth. Pos.	Total Funds	Fed. Funds	
Admin.	3/0	3	155.1	
Health	0/0	0	116.9	
<b>Totals</b>	<b>3/0</b>	<b>3</b>	<b>272.0</b>	<b>(0)</b>

01 OFFICE OF ACCOUNTING AND FINANCE				
Sub-Program	Auth. Pos.	Total Funds	Fed. Funds	
Admin.	12/0	12	758.0	
Allocation Grants	0	0	241.0	
Drug Abuse Grants	0	0	0.0	
<b>Totals</b>	<b>12/0</b>	<b>12</b>	<b>999.0</b>	<b>(0)</b>

01 OFFICE OF ASSESSMENT AND PLANNING				
Sub-Program	Auth. Pos.	Total Funds	Fed. Funds	
Admin.	4/0	4	116.5	
Health Planning	16/0	16	787.5	
Cont. & Eval.	7/0	7	705.2	
SAEC	0	0	63.1	
<b>Totals</b>	<b>27/0</b>	<b>27</b>	<b>1,672.3</b>	<b>(0)</b>

01 OFFICE OF ASSESSMENT AND PLANNING (CONT.)				
Sub-Program	Auth. Pos.	Total Funds	Fed. Funds	
Admin.	15/0	15	448.1	
Grants	0	0	0.0	
<b>Totals</b>	<b>15/0</b>	<b>15</b>	<b>448.1</b>	<b>(0)</b>

01 OFFICE OF ASSESSMENT AND PLANNING (CONT.)				
Sub-Program	Auth. Pos.	Total Funds	Fed. Funds	
Admin.	15/0	15	448.1	
Grants	0	0	0.0	
<b>Totals</b>	<b>15/0</b>	<b>15</b>	<b>448.1</b>	<b>(0)</b>

**02 PUBLIC HEALTH      03 SOCIAL SERVICES      04 CORRECTIONS      05 MENTAL HEALTH & DEV. DISABILITIES      06 PUBLIC ASSISTANCE**

02 PUBLIC HEALTH - ADMINISTRATION				
Sub-Program	Auth. Pos.	Total Funds	Fed. Funds	
Admin.	11/0	11	618.8	(16.0)
Health Ed.	4/0	4	153.8	(12.4)
Grant to Am.	0	0	662.0	(60.0)
<b>Totals</b>	<b>15/0</b>	<b>15</b>	<b>1,434.6</b>	<b>(88.4)</b>

02 PUBLIC HEALTH - ENVIRONMENTAL HEALTH				
Sub-Program	Auth. Pos.	Total Funds	Fed. Funds	
Env. Health	11/0	11	175.0	0
Pollution Prev.	1/1	2	51.7	0
<b>Totals</b>	<b>12/1</b>	<b>13</b>	<b>226.7</b>	<b>(0)</b>

02 PUBLIC HEALTH - COMMUNITY PHYSICAL SERVICES				
Sub-Program	Auth. Pos.	Total Funds	Fed. Funds	
EMS	6/0	6	1103.9	(82.4)
<b>Totals</b>	<b>6/0</b>	<b>6</b>	<b>1,103.9</b>	<b>(82.4)</b>

02 PUBLIC HEALTH - LABORATORY				
Sub-Program	Auth. Pos.	Total Funds	Fed. Funds	
Admin.	1/0	1	121.1	0
Regional Lab.	34/0	34	1,426.4	(77.8)
<b>Totals</b>	<b>35/0</b>	<b>35</b>	<b>1,547.5</b>	<b>(77.8)</b>

03 SOCIAL SERVICES - FAMILY HEALTH				
Sub-Program	Auth. Pos.	Total Funds	Fed. Funds	
Admin.	3/0	3	122.1	0
Family Planning	3/0	3	296.2	0
Maternal & Child Health	2/0	2	264.2	0
Midw. Control	0/0	0	138.5	0
Comm. Clinician	13/0	13	585.2	0
Child Care	5/1	6	261.0	0
Nutrition	2/7	9	480.0	0
Spec. Ed. Grants	1/0	1	75.0	0
<b>Totals</b>	<b>30/8</b>	<b>37</b>	<b>2,152.2</b>	<b>(0)</b>

03 SOCIAL SERVICES - COMMUNICABLE DISEASE CONTROL				
Sub-Program	Auth. Pos.	Total Funds	Fed. Funds	
CD	12/0	12	644.2	0
Immunization	4/0	4	231.0	0
Epidemiology	2/0	2	61.3	0
<b>Totals</b>	<b>18/0</b>	<b>18</b>	<b>936.5</b>	<b>(0)</b>

03 SOCIAL SERVICES - MENTAL HEALTH				
Sub-Program	Auth. Pos.	Total Funds	Fed. Funds	
Admin.	12/0	12	311.6	0
Field Offices	11/0	11	314.3	0
State Health	1/1	2	52.0	0
Early Screening	3/0	3	271.1	0
<b>Totals</b>	<b>27/1</b>	<b>28</b>	<b>859.0</b>	<b>(0)</b>

04 CORRECTIONS - ADMINISTRATION				
Sub-Program	Auth. Pos.	Total Funds	Fed. Funds	
Central Admin.	3/0	3	260.5	0
Staff Dev.	3/0	3	260.5	0
<b>Totals</b>	<b>6/0</b>	<b>6</b>	<b>521.0</b>	<b>(0)</b>

04 CORRECTIONS - VIOLENCE CONTROL				
Sub-Program	Auth. Pos.	Total Funds	Fed. Funds	
VIC	11/0	11	428.1	0
<b>Totals</b>	<b>11/0</b>	<b>11</b>	<b>428.1</b>	<b>(0)</b>

04 CORRECTIONS - PHYSICAL SERVICES				
Sub-Program	Auth. Pos.	Total Funds	Fed. Funds	
Immunization	1/0	1	100.0	0
Inmate Care	0	0	243.0	0
Institutional Care	0	0	410.0	0
App Care	0	0	200.0	0
Youth Services	0	0	170.0	0
<b>Totals</b>	<b>1/0</b>	<b>1</b>	<b>1,123.0</b>	<b>(0)</b>

04 CORRECTIONS - SOCIAL SERVICES				
Sub-Program	Auth. Pos.	Total Funds	Fed. Funds	
Southeast	1/0	1	202.5	0
Northwest	2/0	2	110.0	0
Southwest	1/0	1	40.0	0
Western	1/0	1	64.0	0
Northcentral	1/0	1	67.7	0
Southern	1/0	1	105.0	0
Midwest	1/0	1	40.2	0
<b>Totals</b>	<b>7/0</b>	<b>7</b>	<b>529.4</b>	<b>(0)</b>

05 MENTAL HEALTH & DEV. DISABILITIES - ADMINISTRATION				
Sub-Program	Auth. Pos.	Total Funds	Fed. Funds	
Admin.	28/0	28	1,013.8	(0)
<b>Totals</b>	<b>28/0</b>	<b>28</b>	<b>1,013.8</b>	<b>(0)</b>

05 MENTAL HEALTH & DEV. DISABILITIES - COMMUNITY SERVICES & SERVICES				
Sub-Program	Auth. Pos.	Total Funds	Fed. Funds	
Admin.	11/0	11	1,041.8	0
Grants	1/0	1	74.8	0
<b>Totals</b>	<b>12/0</b>	<b>12</b>	<b>1,116.6</b>	<b>(0)</b>

05 MENTAL HEALTH & DEV. DISABILITIES - COMMUNITY DEVELOPMENTAL SERVICES				
Sub-Program	Auth. Pos.	Total Funds	Fed. Funds	
Admin.	1/0	1	289.1	(0)
<b>Totals</b>	<b>1/0</b>	<b>1</b>	<b>289.1</b>	<b>(0)</b>

05 MENTAL HEALTH & DEV. DISABILITIES - COMMUNITY MENTAL HEALTH SERVICES				
Sub-Program	Auth. Pos.	Total Funds	Fed. Funds	
Regional Admin.	3/0	3	81.0	0
State Clinic	2/0	2	294.2	0
State Clinic	2/0	2	117.2	0
Long Term Care	0	0	230.0	0
Emer. Hosp. Care	0	0	88.8	0
<b>Totals</b>	<b>7/0</b>	<b>7</b>	<b>701.2</b>	<b>(0)</b>

05 MENTAL HEALTH & DEV. DISABILITIES - RESEARCH & SERVICE				
Sub-Program	Auth. Pos.	Total Funds	Fed. Funds	
Res. & Eval. Div.	1/0	1	88.0	0
Res. & Eval. Div.	0	0	197.0	0
Res. & Eval. Div.	0/2	2	157.5	0
Res. & Eval. Div.	1/1	2	64.2	0
<b>Totals</b>	<b>3/1</b>	<b>5</b>	<b>306.7</b>	<b>(0)</b>

05 MENTAL HEALTH & DEV. DISABILITIES - RESEARCH & SERVICE (CONT.)				
Sub-Program	Auth. Pos.	Total Funds	Fed. Funds	
Admin.	15/0	15	642.0	(0)
<b>Totals</b>	<b>15/0</b>	<b>15</b>	<b>642.0</b>	<b>(0)</b>

05 MENTAL HEALTH & DEV. DISABILITIES - RESEARCH & SERVICE (CONT.)				
Sub-Program	Auth. Pos.	Total Funds	Fed. Funds	
Admin.	15/0	15	642.0	(0)
<b>Totals</b>	<b>15/0</b>	<b>15</b>	<b>642.0</b>	<b>(0)</b>

06 PUBLIC ASSISTANCE - ADMINISTRATION				
Sub-Program	Auth. Pos.	Total Funds	Fed. Funds	
Admin.	76/0	76	356.4	(154.0)
<b>Totals</b>	<b>76/0</b>	<b>76</b>	<b>356.4</b>	<b>(154.0)</b>

06 PUBLIC ASSISTANCE - STATE DEVELOPMENT				
Sub-Program	Auth. Pos.	Total Funds	Fed. Funds	
Staff Dev.	2/0	2	25.0	(14.4)
<b>Totals</b>	<b>2/0</b>	<b>2</b>	<b>25.0</b>	<b>(14.4)</b>

06 PUBLIC ASSISTANCE - COMMUNITY DEVELOPMENTAL SERVICES				
Sub-Program	Auth. Pos.	Total Funds	Fed. Funds	
Dev. Disab.	1/0	1	1,000.0	(0)
<b>Totals</b>	<b>1/0</b>	<b>1</b>	<b>1,000.0</b>	<b>(0)</b>

06 PUBLIC ASSISTANCE - COMMUNITY DEVELOPMENTAL SERVICES (CONT.)				
Sub-Program	Auth. Pos.	Total Funds	Fed. Funds	
Regional Admin.	3/0	3	81.0	0
State Clinic	2/0	2	294.2	0
State Clinic	2/0	2	117.2	0
Long Term Care	0	0	230.0	0
Emer. Hosp. Care	0	0	88.8	0
<b>Totals</b>	<b>7/0</b>	<b>7</b>	<b>701.2</b>	<b>(0)</b>

06 PUBLIC ASSISTANCE - QUALITY CONTROL				
Sub-Program	Auth. Pos.	Total Funds	Fed. Funds	
QC	11/0	11	418.0	(100.1)
<b>Totals</b>	<b>11/0</b>	<b>11</b>	<b>418.0</b>	<b>(100.1)</b>

06 PUBLIC ASSISTANCE - MEDICAL				
Sub-Program	Auth. Pos.	Total Funds	Fed. Funds	
Med. Serv.	0	0	471.0	0
Physician Serv.	0	0	210.0	0
Other Serv.	0	0	501.0	0
IPMS	0	0	632.0	0
Residing Homes	0	0	1,000.0	0
State Inst.	0	0	619.1	0
Indian Health	0	0	642.1	0
<b>Totals</b>	<b>0</b>	<b>0</b>	<b>5,175.1</b>	<b>(0)</b>

06 PUBLIC ASSISTANCE - ASSISTANCE SERVICES				
Sub-Program	Auth. Pos.	Total Funds	Fed. Funds	
Admin.	4/0	4	1,671.0	0
AAA	0	0	873.0	0
AAA	0	0	122.0	0
AAA	0	0	214.0	0
AAA	0	0	403.0	0
<b>Totals</b>	<b>4/0</b>	<b>4</b>	<b>2,283.0</b>	<b>(0)</b>

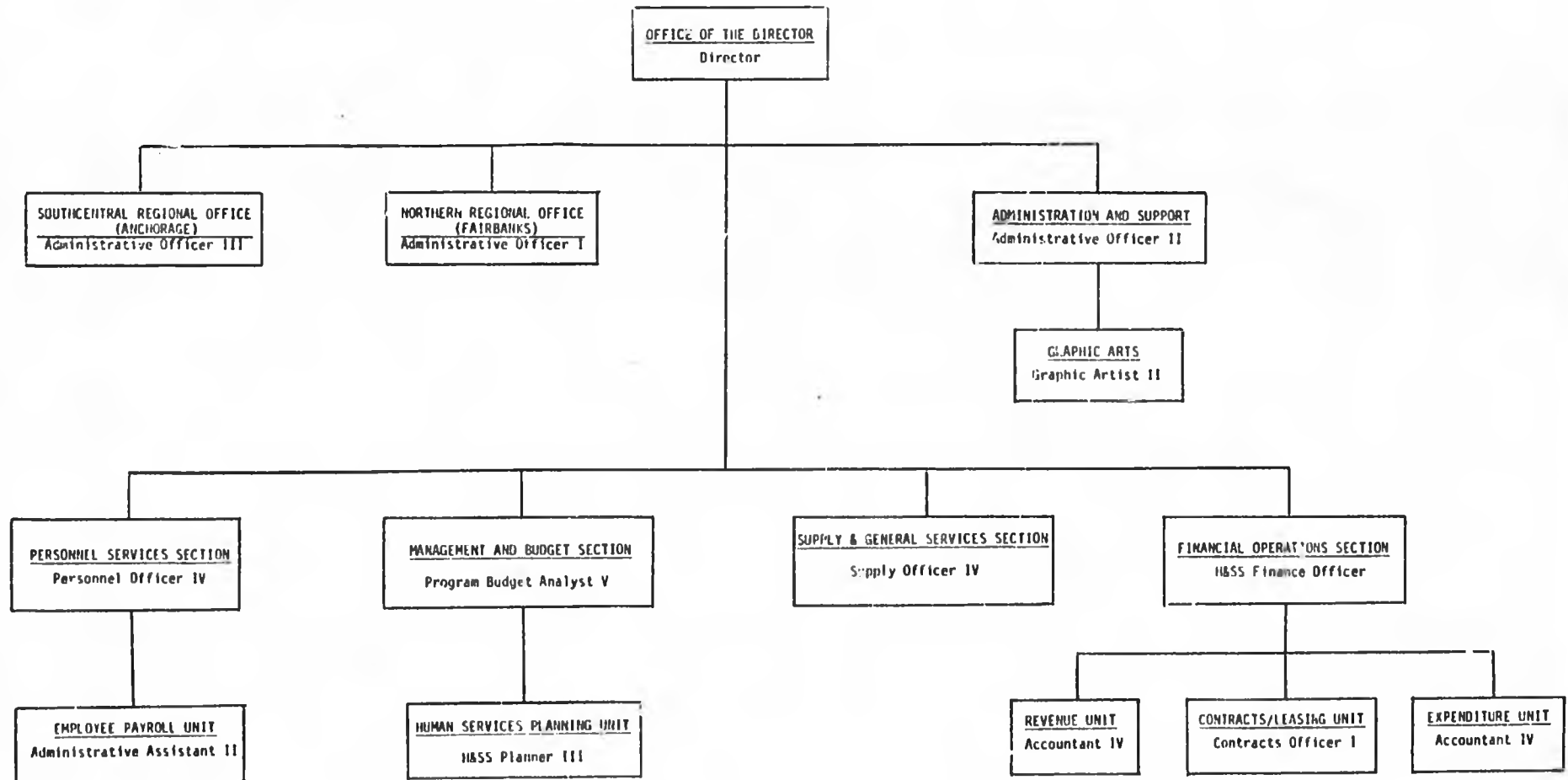
07 DIVISION TOTAL					
Division	Auth. Pos.	Positions	Total Funds	Federal Funds	Fed. Funds %
General Administration	141	4	107	19,600.0	4,131.4
Public Health	249	40	319	15,139.4	2,119.2
Social Services	115	14	149	1,846.1	711.9
Corrections	602	3	615	24,990.1	0
Mental Health	427	10	437	19,940.0	1,278.0
Public Assistance	1,061	11	1,072	22,512.0	13,708.0
<b>Totals</b>	<b>2,595</b>	<b>82</b>	<b>2,618</b>	<b>101,127.5</b>	<b>21,640.5</b>

**ADDITIONAL FUNDS RECEIVED FOR OTHER AGENCIES - SUPPLEMENTAL BUDGETS, SPECIAL PROGRAMS**

The following represents supplemental amounts submitted as of January 1, 1979 to the Division of Budget and Management, Office of the Governor, for consideration:

Agency	Supplemental Funds Received
State Psychiatric Institute (M/MS)	21.7
M/MS & Support (M/MS)	20.0
Public Health Nursing (Public Health)	60.0
Biomedical and Drug Abuse	32.1
Prevention & Public Administration	

DEPARTMENT OF HEALTH AND SOCIAL SERVICES  
 DIVISION OF ADMINISTRATIVE SERVICES  
 UNIT ORGANIZATION CHART



*Hubert D. Bristow*  
 Commissioner, Health and Social Services

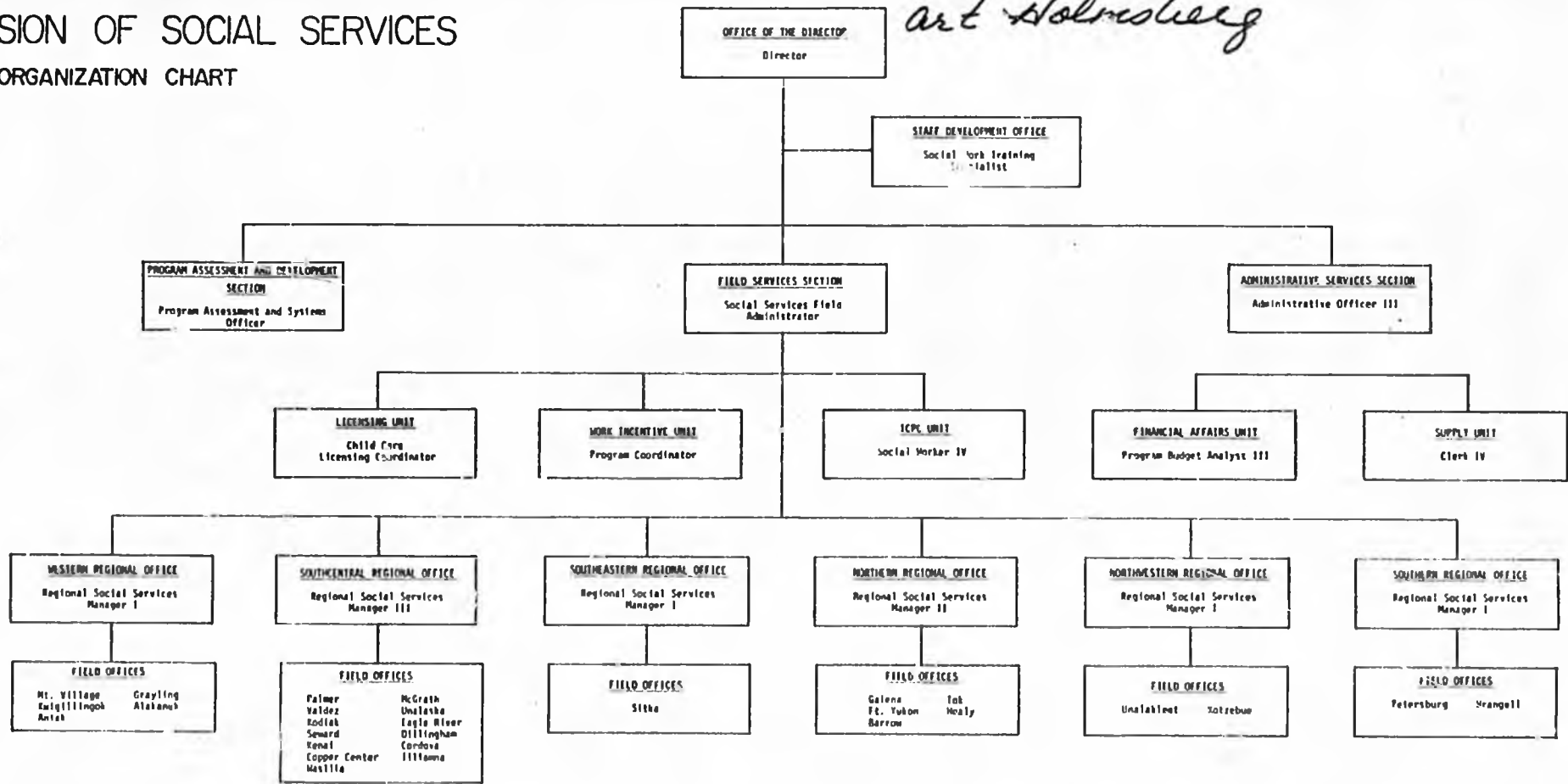
January 1, 1979

DEPARTMENT OF HEALTH AND SOCIAL SERVICES

DIVISION OF SOCIAL SERVICES

UNIT ORGANIZATION CHART

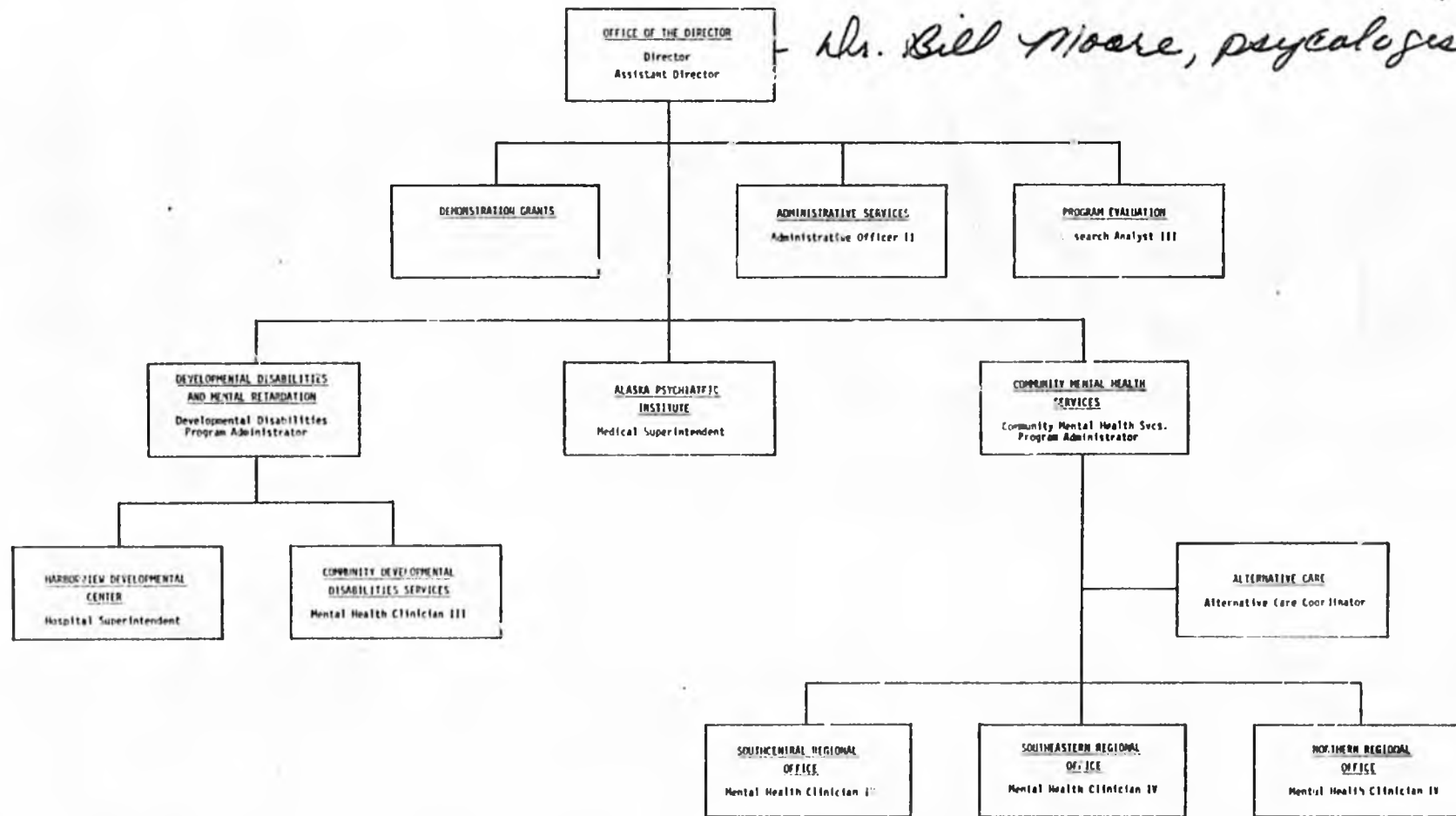
*Art Holmsberg*



*Harold O. Bassett*  
Commissioner, Health and Social Services

January 1, 1970

DEPARTMENT OF HEALTH AND SOCIAL SERVICES  
 DIVISION OF MENTAL HEALTH AND  
 DEVELOPMENTAL DISABILITIES  
 UNIT ORGANIZATION CHART

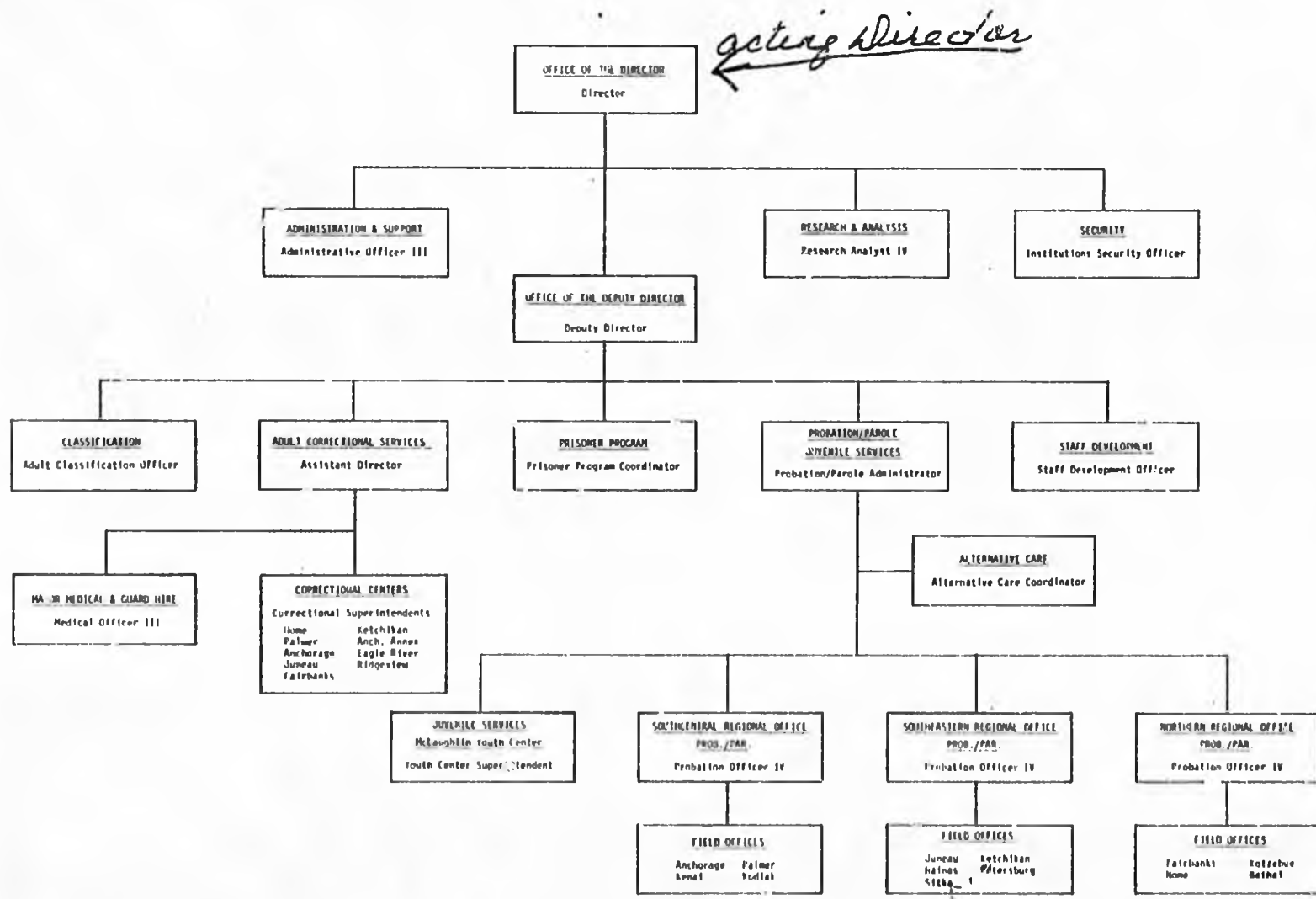


*Mr. Bill Moore, psychologist*

DEPARTMENT OF HEALTH AND SOCIAL SERVICES

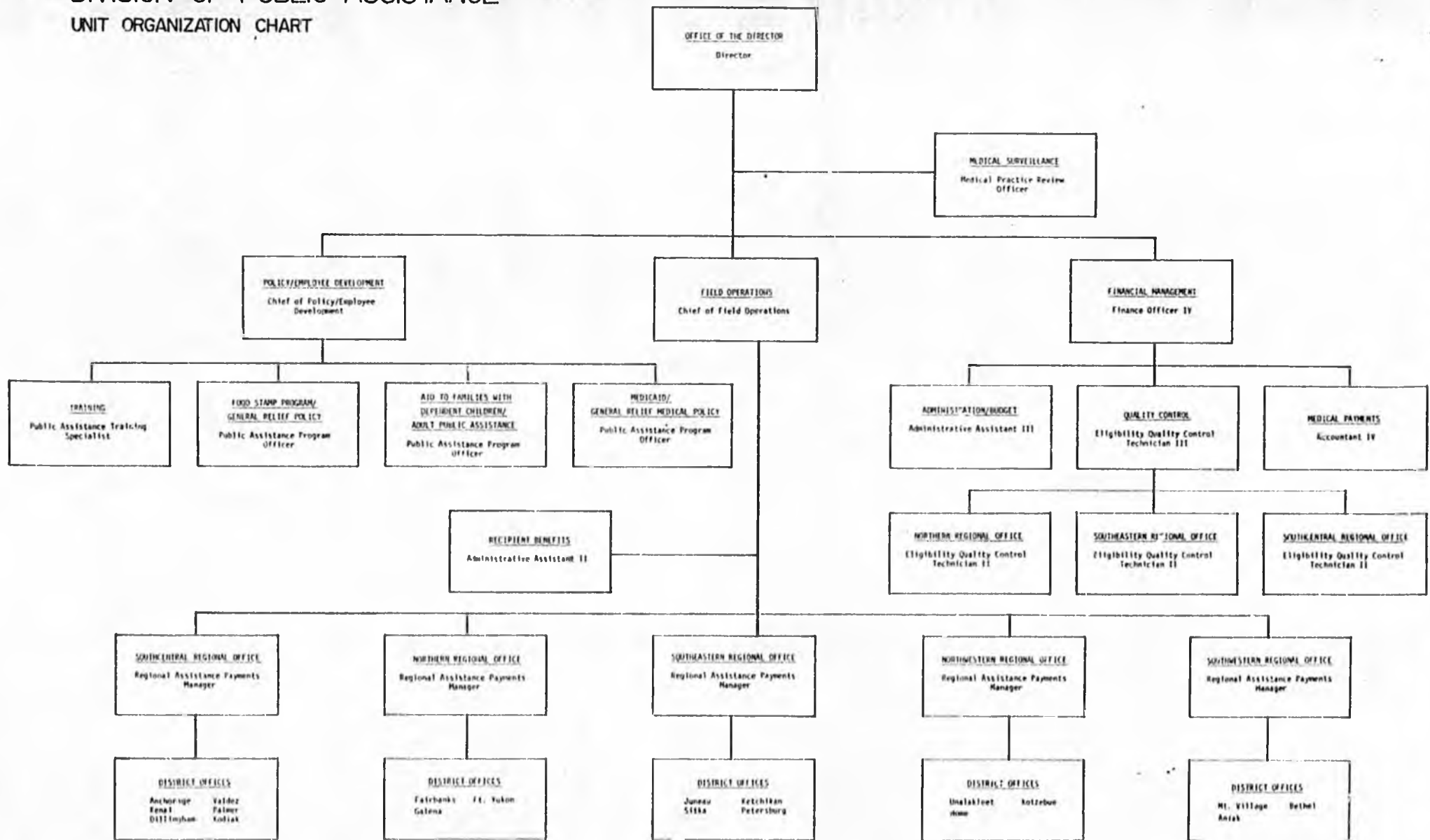
DIVISION OF CORRECTIONS

UNIT ORGANIZATION CHART

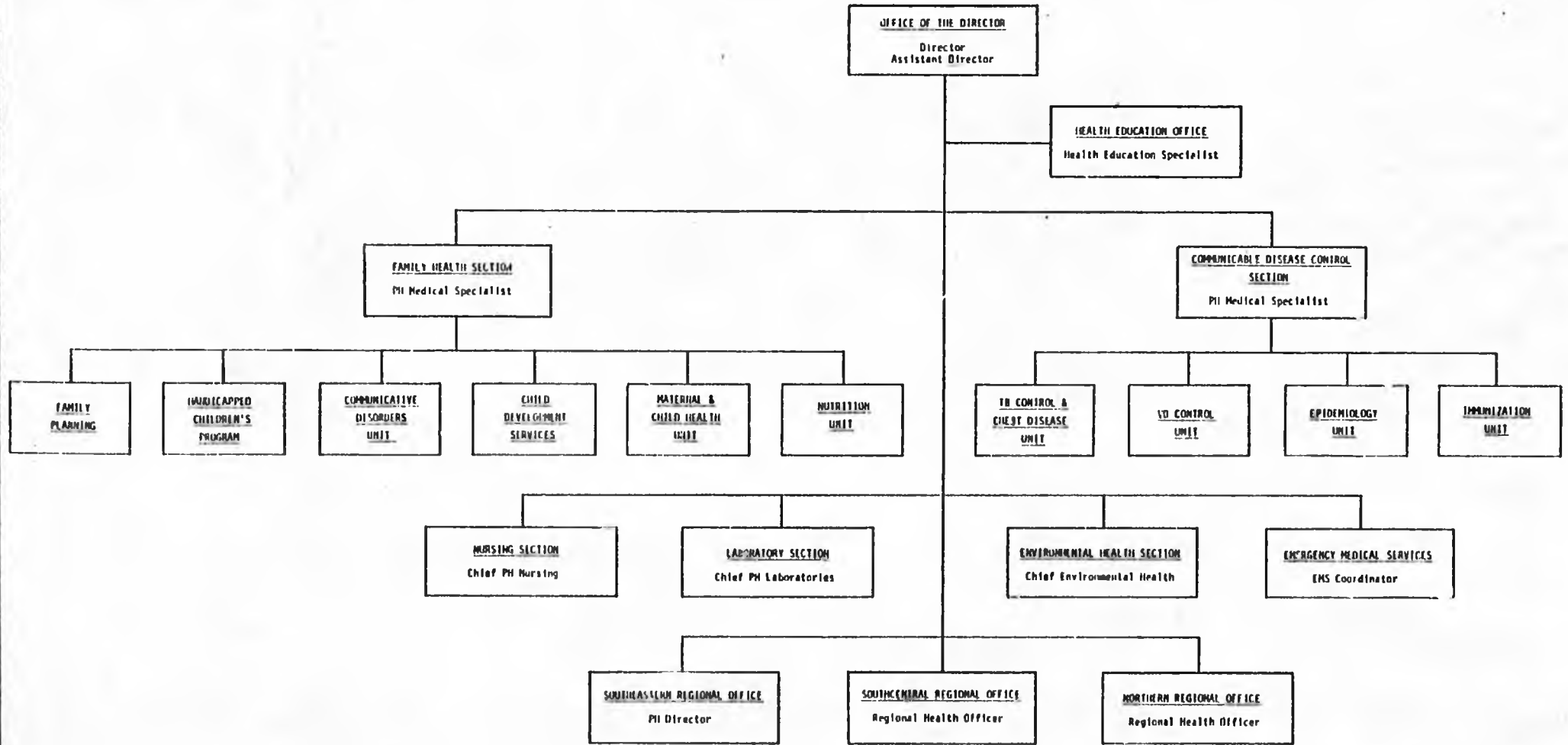


*acting Director*

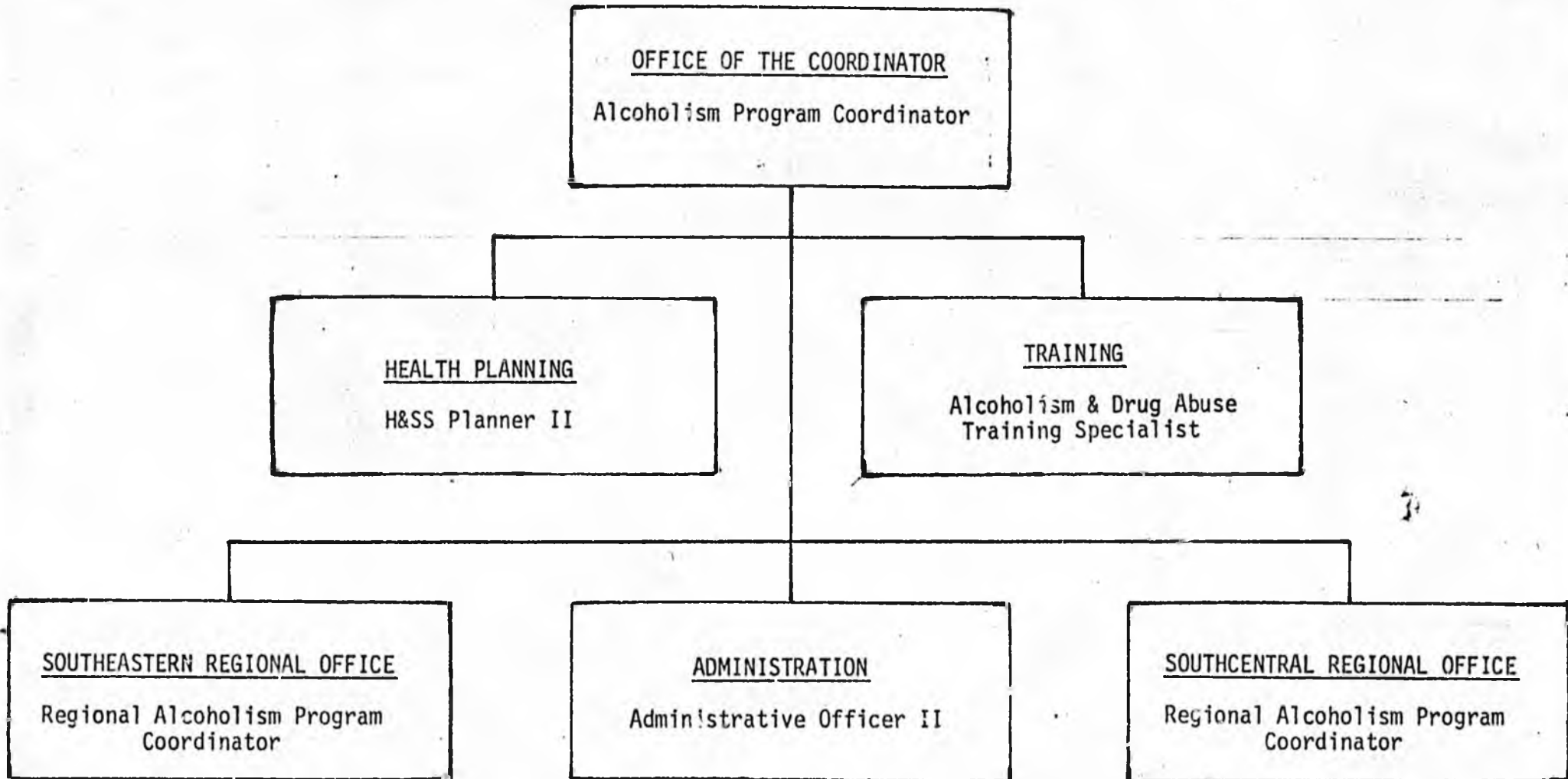
DEPARTMENT OF HEALTH AND SOCIAL SERVICES  
 DIVISION OF PUBLIC ASSISTANCE  
 UNIT ORGANIZATION CHART



DEPARTMENT OF HEALTH AND SOCIAL SERVICES  
 DIVISION OF PUBLIC HEALTH  
 UNIT ORGANIZATION CHART



DEPARTMENT OF HEALTH AND SOCIAL SERVICES  
OFFICE OF ALCOHOLISM AND DRUG ABUSE  
UNIT ORGANIZATION CHART



*Alan D. Beiner*  
Commissioner, Health and Social Services

January 1, 1979

DEPARTMENT OF HEALTH AND SOCIAL SERVICES  
ALASKA BOARD OF PAROLE  
UNIT ORGANIZATION CHART

PAROLE ADMINISTRATION

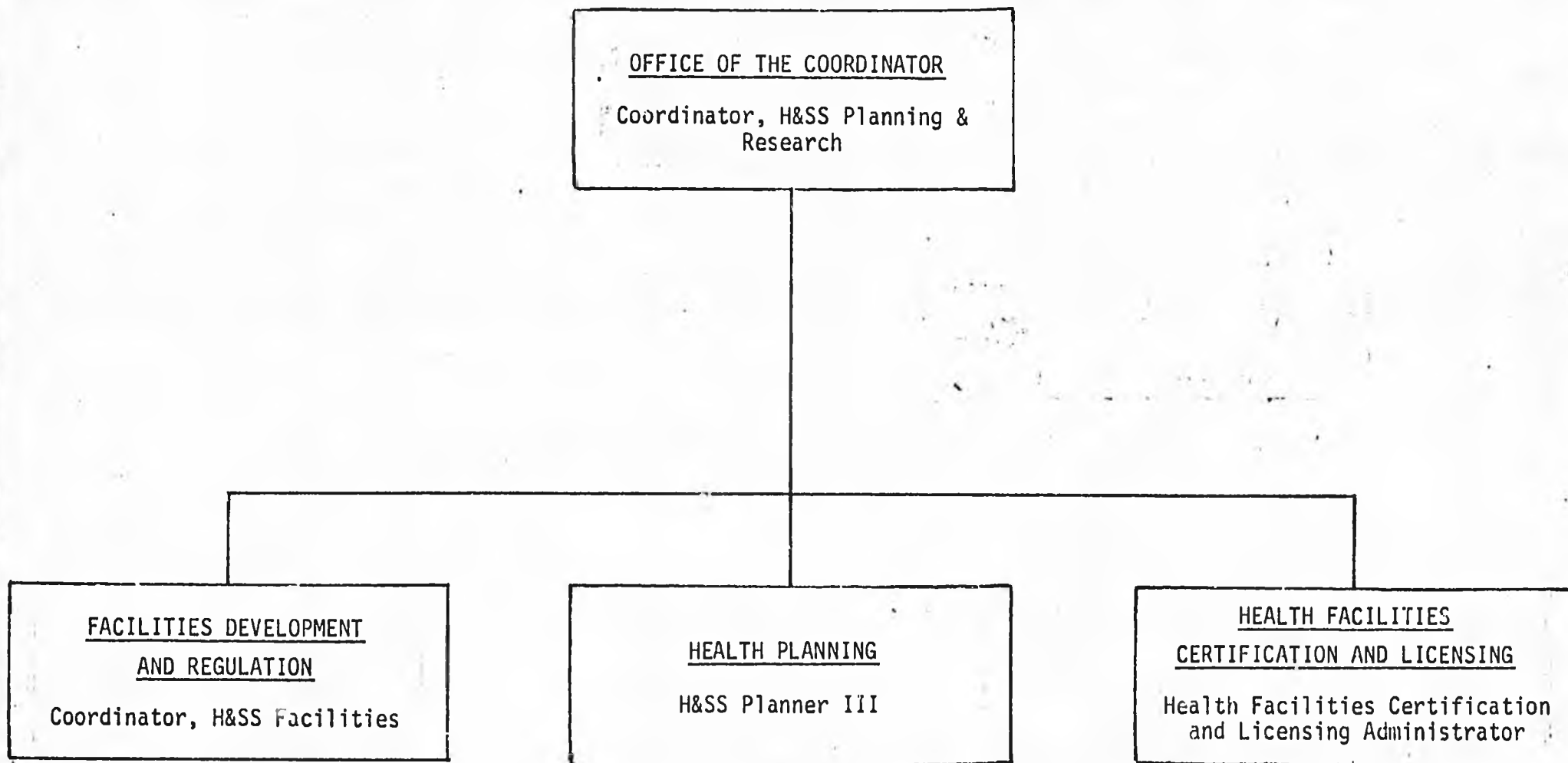
Executive Director, Alaska  
Parole Board

*Heidi D. Beine*

Commissioner, Health and Social Services

January 1, 1979

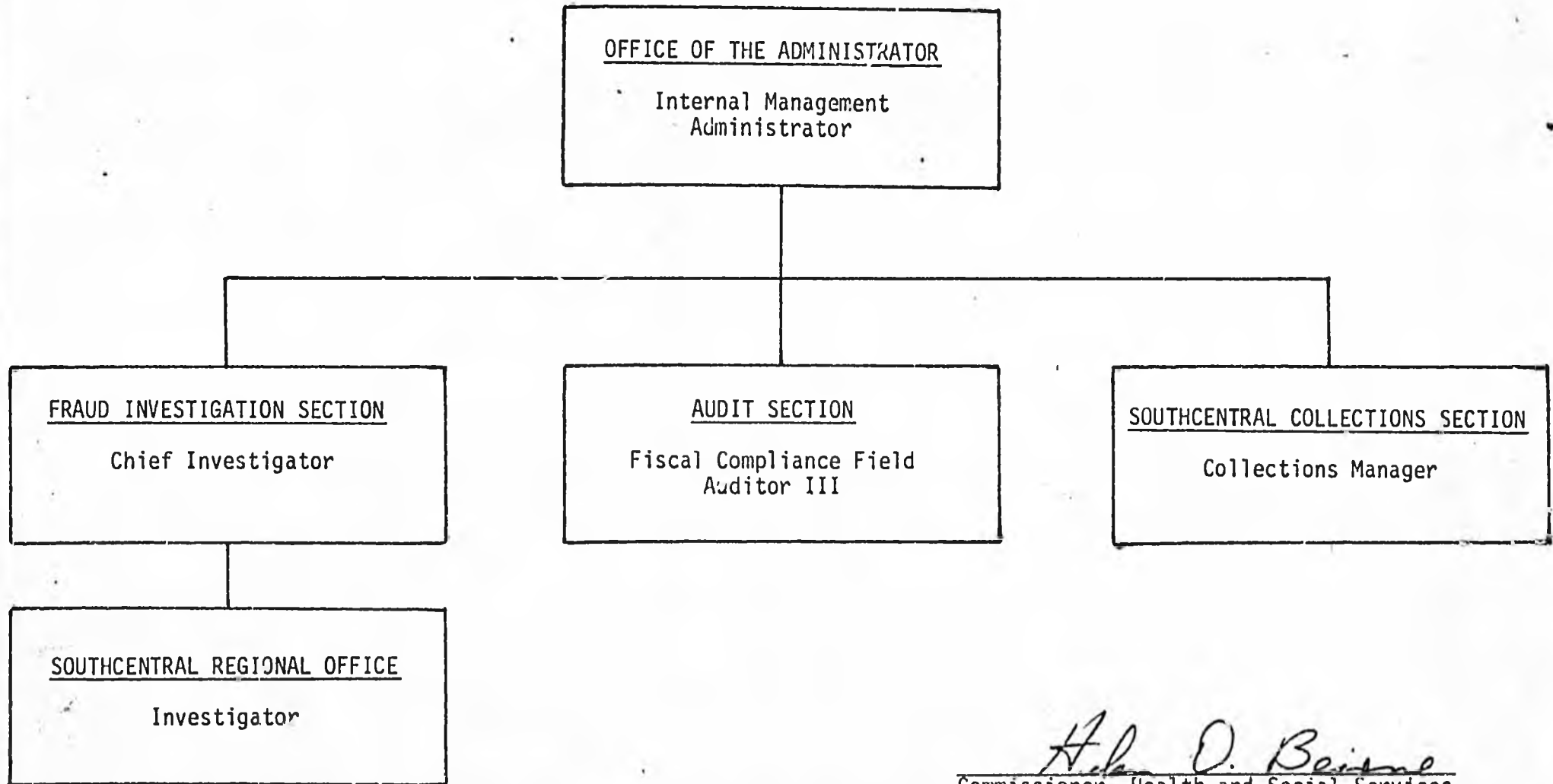
DEPARTMENT OF HEALTH AND SOCIAL SERVICES  
OFFICE OF STATE HEALTH PLANNING AND DEVELOPMENT  
UNIT ORGANIZATION CHART



*Alan D. Boies*  
Commissioner, Health and Social Services

January 1, 1979

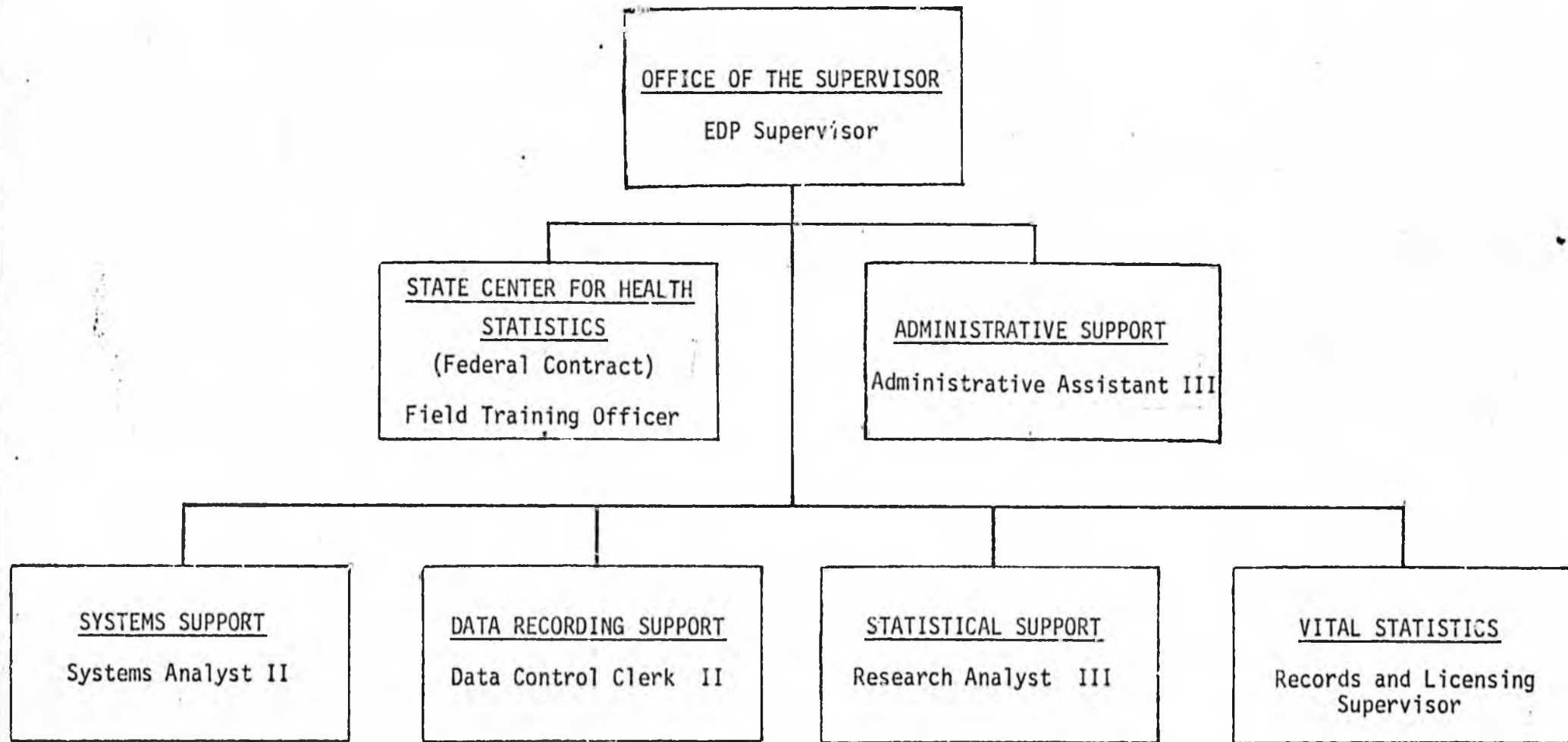
DEPARTMENT OF HEALTH AND SOCIAL SERVICES  
OFFICE OF INTERNAL REVIEW  
UNIT ORGANIZATION CHART



*Alan D. Beisme*  
Commissioner, Health and Social Services

January 1, 1979

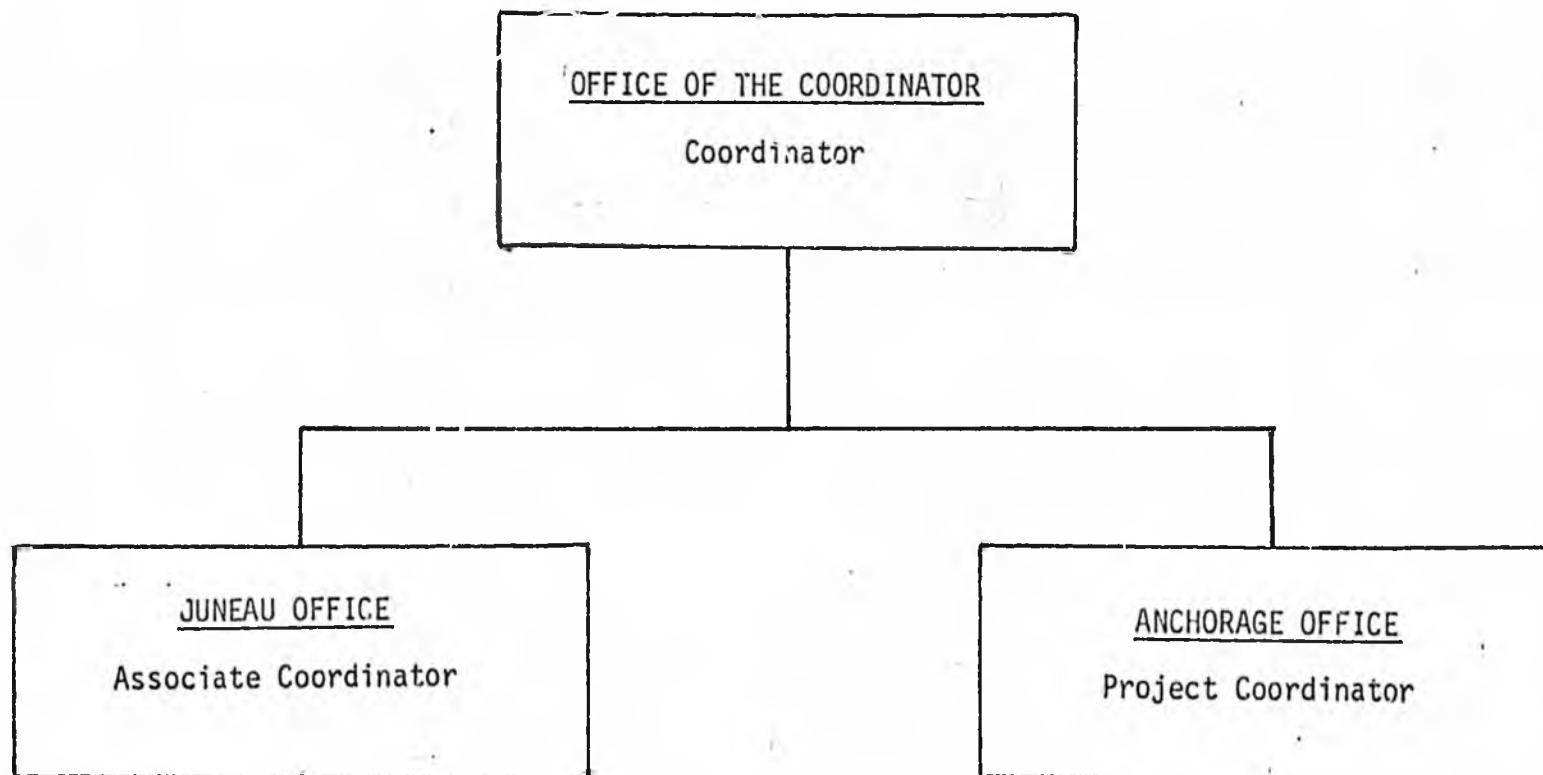
DEPARTMENT OF HEALTH AND SOCIAL SERVICES  
OFFICE OF INFORMATION SYSTEMS  
UNIT ORGANIZATION CHART



*Allen D. Beitner*  
Commissioner, Health and Social Services

January 1, 1979

DEPARTMENT OF HEALTH AND SOCIAL SERVICES  
OFFICE OF AGING  
UNIT ORGANIZATION CHART



*Alan D. Beine*  
Commissioner, Health and Social Services

January 1, 1979

DEPARTMENT OF EDUCATION

2-2-79

Dept. of Education Commissioner Marshall Lind gave an overview of the Dept. of Education. They have a 7 member state board and a 2 member advisory board: a student and a military person.

Nat Cole -- soon to retire

Bill Branble -- Educational TV

Dick Engen -- Library and Museum

Harry Gamble -- public information

Marilou Madden -- education

Bob Green -- Superintendent of Schools

Bill Thompson -- not present

Susan Stichell -- teachers

Ernest Polley -- Research and Planning

The role of DOE is a "nebulous area". They work closely with school boards. There is no statutory relationship between DOE and U of A.

DICK ENGEN - Film library has 14,000 films available (regional coordinator in Anchorage and Fairbanks. Serves all age groups. Direct service.

MARILOU MADDEN - Director, Educational Program. Division that works with teachers. Elementary and secondary. Correspondence studies, assisting school districts. Vocational rehabilitation. Provides information to schools to better their programs. 12 districts run their own correspondence study programs aside from the statewide program. The Alaska Skill Center falls under this program. In 1969 it was tied with federal dollars. \$110 million construction passed last session.

CHAT: Asked about the Alaska Skill Center. Said that some people feel we do not have adequate training facilities for Alaskan jobs.

LIND: We don't have to rely so much on federal money, we now have state General Fund money and the program is open to anyone who has the money to attend.

NAT COLE: Division of Management, Law and Finance.

This Division pays bills, administrative functions, record keeping, distributes statutes, all funding to public schools. Takes care of the planning, implementation and school construction and school transportation.

Dept. of Education, cont.

HESS Committee Meeting

2-2-79

NAT COLE: This Division also takes care of accounting manuals and certification of teachers. The basic procedure -- expenditure of funds, makes plans, REAA recommendations to Governor, reimbursements to districts.

REP. HURLBERT: Does the certification of teachers supercede school board certificates?

COLE: All teachers must be certified by the Dept. of Education. Must have B.A. Bachelor's Degree. All papers submitted are reviewed. It is the responsibility of the individual to have certificate.

BARNES: Molly Hootch case?

Consent of court-- option of local community to say whether they want a school or not. Settled out of court.

BARNES: Said she would like a list of schools that have been built under Molly Hootch. On a square foot basis and how many students.

COLE: We just received information. Some available statistics.

BILL BRAMBLE -- Educational Telecommunications.

Jennifer Wilke is the Director of project-video tape. Satellite Demonstration Project. 20 to 25 hours a week in demo project.

Three major facets: 1. Administrative Communications Network. Takes care of administrative problems. Has electronic mail system -- connects all schools to pass information. On national basis too. 2. Facilitate 3. Preparing support component for small high schools. Gives them a broader curriculum for schools with limited teachers. Student management system.

MUNSON: Asked if there were evaluations on the use of television instruction and education.

BRAMBLE: J. Wilke put together a package on the use of television.

Cost effective approach.

BUCHHOLDT: No contributions from Local Districts?

LIND: Yes. They are making contributions. At one time we were asking for cash contributions, but not direct cash. Either they contribute or they pay the extra costs assumed in telecomm. lines.

Dept. of Education

2-2-79

Pg. 3

ERNEST POLLEY: State Dept. of transportation and public facilities:  
State operated network from Fairbanks to Kenai. Have to pay telecommunications line costs. Local costs went up after the RCA increases.

CONCLUSION: Review Task Force was put together and working for almost one year. They have completed their review. One review done by feds the others are state agencies.

Dept. of Education not asking for any new monies. They are concerned with the present format.

University of Alaska

Coop Ex. } 789-  
Community College } 2101

Arch. - Nursing School  
Mrs. Martin, Dean

263-1272

Name

Organization

Address

Bill #

BOB URGENCE

Bill Bramble

ASSN OF ALASKA Sch. BODS.

DOE

204 NORTH FRANKLIN St.

Project ETA

2-2-79

Education

Dept. of Education, Comissioner Marshall died  
Bob Green, Dept. of Ed.

Libraries  
M.F. - museums Dick Engstrom

Mike Morgan - not here.

Ernest Polly -

Bill Bramble

Harry Stumble - ?

Bob Green } Dept. of Education  
Susan Stetson }

Runs Award Skill Center

Responsibility - life cycle costing.

Funding projects.

Disruptions

3rd Statewide Items - telecommunication  
bilingual - sk. Skill centers.

★ Don't run schools in Unorganized Borough

Manson - Relationships w/ U of A.

Com. kind - no <sup>statutory</sup> official relationships

Thelma Langley - President  
Swerby Holmes.

Board  
of  
Education

Murson - state operated schools - your Dept.

Cor. Lind both - become separate.

Chat - Student Assessment Program. <sup>wants to see</sup> 1st part of diagnostic test.

Lind 2 step process

Chat sk. skill centers

Lind an oversight.

Polly 2 tests - where weak & strong - Reading/math  
Takes local perception & make it more.  
(Beine - comes in)

Nick Engstrom - Libraries & museum  
Film libraries (2) 1 in each, Juneau.  
Regional coordinators in Foks/Arch.  
sk. Blue book.

March  
1977

~~Alan~~ - Alan Monroe Dept. Director  
State museum

★ Flyers - available on larger scale?

★ sk. Health Sciences: Library U of B Arch.

Mary Ann Maden - Skill Centers - Division  
# works w/ teachers - Elementary & Secondary.  
Correspondence - assisting school districts  
provisions of adequate training. Vocational  
provide info to school to better program.  
Service teachers

Munson - print teacher's guide

Maden - no. stopped doing it.

Hurlbert - Kuseguori - 600 students  
Correspondence - 12

Maden 12 Districts run their own Correspondence.

Chat: Ak. skill center - oil well drilling.

Seward - Production phase

Community College getting into Vocational  
Kenai

Maden - sort out less than (3) yr. programs.

Chat Assoc. Degree. Political arena. Some  
people feel not adequate training facilities  
for Ak. jobs. Don't share feelings.

Lind - Don't have to rely so much on Fed \$  
now have state General Fund \$.  
Open to anyone who has \$  
morgan (not here)

Nat Cole - Div. management law & Finance  
Paying bills adm. functions Record keeping.  
Distribute (statute) all Funding's to public  
Schools. 110 m. \$ School Construction  
Planning, implementation School  
Construction

School Transportation

" Districts keep accounts. <sup>accounting</sup> manuals  
Certification of teachers.  
Not how they construct - Bond issues  
Procedure - expenditure of funds.  
Plans - <sup>REAA</sup> Recommendation to Governor.  
Reimbursements to districts - plans  
must be submitted.

Shullert - Cert. of teachers - Supercede school board certificate

Cole all teachers must be certified by Dept. of Ed. Regulations B. A. Bachelor's Degree paper submitted are reviewed.

Responsibility of individual to have certificate.

Barnes Dept. determine Kutchikan? Molly Hootch  
SI REAF

Consent of Court / opinion of local Community to say whether they want a school

Barnes List of schools that have been built under Molly Hootch. (Just received info.) Sq. ft. basis. How many students

Some available statistics

Bernie Homestead Act goes through  
Will you ready for bush schools?

Cole leaving - 23<sup>rd</sup> Feb.

out of Court Settlement  
Molly Hootch.

To enrich Education in Bush. <sup>Rural</sup> A.K.  
Educational communication  
Funded jointly, Fed & State

Bill Bramble - Telecommunications

Jennifer Wilke - dir. of project - video tape.  
Satellite demonstration project.

20-25 hrs. a week in Demo project.

3rd Educational Tele. Projects -

Narrow band - Data & Voice Communi-  
cations.

3 major facets (1) Administrative problems  
Electronic mail system - connects all  
schools to pass info. National basis too.

(2) Preparing support component for small  
high schools - broader curriculum  
for schools with limited teachers.

Ak. History course.

Student management system

Munson - Have these not been developed? Education  
Evaluations on use of television in instruction

Bramble Package. Cost effective approach.

J. Wilke put together package on the  
use of television

Thelma no contribution from local districts

Lind eyes - are making contributions.

at one time wanted cash contributions,  
but not direct cash. or extra costs  
assumed in telecom. lines

Polly State Dept of Transp. & Public Facilities  
back bone - State operated network  
from Ft. Collins to Kerasai.

Have to pay telecom. line costs.  
Local - went up after RCA  
increases.

Chat - Adm. communications network. ITE

Jennifer Wilke

Conclusion

Review Task Force - put together and working for almost 1 year. Have completed review. 1 done by Fed. Gov't & State Agencies.

Enthusiast.

Not asking for any new monies.  
Concerned about present format.

To provide funding to schools  
To help local schools

Munson How many people

Kind { about 400 100 Voc Rehab.

Chat - Consent - D'Tree <sup>Oral</sup> Education - other's rather than brick & mortar schools

Barnes - doing research on this matter.

# Meeting with DOE

## Commissioner Marshall Lind:

Unique in state govt.

7-member state board

2-member advisory: student

(Military  
Carolyn Barry  
Colonel Jones)

Nat Cole — retiring

Dick Engen — library

Mailon Madden — education

Bill Thompson — not present

Ernest Polley — research + planning

Bill Bramble — educational TV

Harry Bramble — public info

Bob Green — Superintendent of Schools

Susan Stichell — teachers

Role of DOE is a "nebulous area"

work closely with school boards

no statutory relationship between DOE + U. of A.

Dick Engen —

Film library, 14,000 films available

serves all age groups

direct service

regional  
Coordinator  
in Anch  
+ Fairbanks

Mailon Madden — Director, Educational Program Support

all federal program

2 main functions — money distributed to school district

12 districts run their own correspondence Study programs

↓  
aside from the statewide program

Alaska Skill Center — 1969 tied w/ federal dollars

→ per student cost —

funding distributed according to

\$110 million construction passed last session — cost reimbursement / enail transportation

Bonding = <sup>DOE</sup> reviews plans + <sup>of REAA</sup> makes recommendation to the gov.  
↓

Molly Hootch case — consent decree settled out of court

Bill Bramble — fed govt. + state funding over 5 yr. period

Telecommunications

↓  
Instructional project  
Video program of teachers within state  
↓  
workable procedures for teacher input in video type materials.  
20-25 hrs./wk educational program

Educational telecommunications

1) attempt to solve the "distance" problem  
San Mateo instructions of public schools

1) Administrative

2) feasible

3) support component for small high schools.

Florida history courses

high grade



---

Task Force on Review DOE (outside review)



100 VA rehab  
70 lib + museum  
45 Seward Skill Center



Copy of consent decree —

ITV