

Josephson
28-GH2671\Y.7
Wallace
3/12/14

AMENDMENT #2 ✓

KITO
KAWAKAMI

TARR

Garc

Tuck

OFFERED IN THE HOUSE
TO: CSHB 266(FIN)

- 1 Page 11, line 4:
- 2 Delete "237,167,600"
- 3 Insert "239,167,600"
- 4 Delete "29,687,700"
- 5 Insert "31,687,700"
- 6
- 7 Page 11, line 17:
- 8 Delete "2,000,000"
- 9 Insert "4,000,000"
- 10
- 11 Adjust fund sources and totals accordingly.



AP3 Pre-Kindergarten Program Four-Year Summary

Introduction

In Alaska FY 2013, EED was provided with \$2,800,000.00 in General Funds for a second round of competitive grants for the Alaska Pre-Kindergarten program (formerly the AP3). The department was able to fund the eight highest scoring proposals as well as the two set aside grants requested by the legislature when the program began. The eight competitive grants went to the Lower Kuskokwim SD, Anchorage SD, Mat-Su SD, Nome SD, Juneau SD, Yukon Koyukuk SD, North Slope SD and the Dillingham SD. The set asides went to Lower Yukon SD and Yupiit SD.

AP3 Grantee and Site Information

The tables below represent Alaska Pre-Kindergarten competitive grants. An additional \$150,000 was provided to two intervention districts to improve their coordination with existing early childhood programs in their communities and for parent outreach in communities with no services (totaling \$300,000). The remaining funds went out as grants, contracts and materials supporting required training, assessments and reporting processes (PPVT, DIAL – 3, ECERS, TSG, and parent & community engagement).

FY 10	Classrooms	Children	Grant	FY 11	Classrooms	Children	Grant
Anchorage	2	35	\$167,684	Anchorage	2	36	\$167,684
Bering Strait	4	49	\$362,828	Bering Strait	4	49	\$362,828
Juneau	2	33	\$201,073	Juneau	2	40	\$201,073
Lower Kuskokwim	2	23	\$337,732	Lower Kuskokwim	2	29	\$337,732
Nome	2	38	\$219,539	Nome	2	40	\$219,539
Yukon Koyukuk	5	31	\$325,445	Yukon Koyukuk	7	54	\$325,445
Total	17	209	\$1,614,301	Total	19	248	\$1,614,301

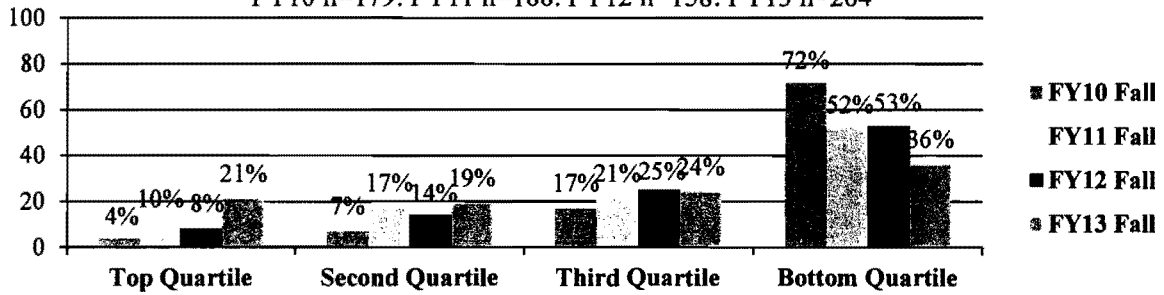
FY 12	Classrooms	Children	Grant	FY 13	Classrooms	Children	Grant
Anchorage	2	39	\$167,684	Anchorage	2	35	\$159,300
Bering Strait	4	47	\$362,828	Dillingham	2	33	\$260,000
Juneau	2	43	\$201,073	Juneau	4	64	\$380,133
Lower Kuskokwim	2	30	\$337,732	Lower Kuskokwim	2	33	\$321,387
Nome	2	35	\$219,539	Mat-Su	6	79	\$497,000
Yukon Koyukuk	2	24	\$325,445	Nome	3	55	\$268,447
				North Slope	2	25	\$158,407
				Yukon Koyukuk	5	21	\$259,011
Total	14	211	\$1,614,301	Total	26	345	\$2,303,685

Peabody Picture Vocabulary Test, Fourth Edition (PPVT-4)

Each fall and spring, students' receptive English vocabulary is measured using the Peabody Picture Vocabulary Test, Fourth Edition (PPVT-4). The results provided are for students who completed both fall and spring assessment data for the FY10, FY11, FY12, and FY13 school years. Based on the national percentile rankings of the PPVT, the percentage of students in each quartile was as follows:

State Aggregate PPVT All Program Percentages (Fall)

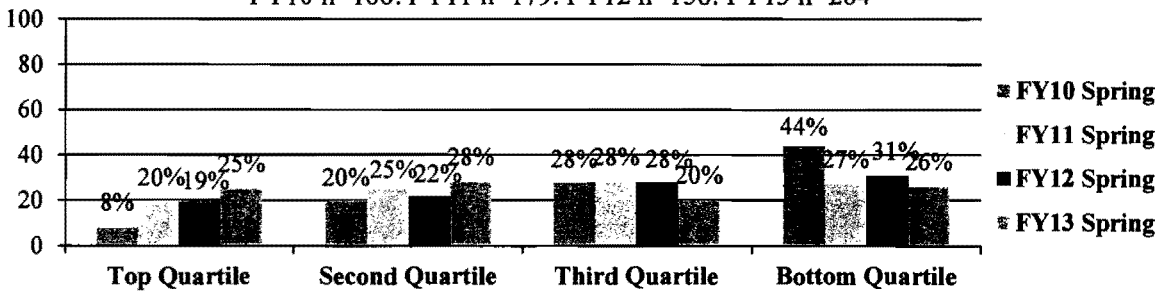
FY10 n=179; FY11 n=188; FY12 n=158; FY13 n=264



	2010	% of (n=179)	2011	% of (n=188)	2012	% of (n=158)	2013	% of (n=264)
Top Quartile (75 th -100 th percentile)	7	4%	19	10%	13	8%	56	21%
Second Quartile (50 th -74 th percentile)	13	7%	32	17%	22	14%	50	19%
Third Quartile (25 th -49 th percentile)	30	17%	39	21%	39	25%	63	24%
Bottom Bottom(0-24 th percentile)	129	72%	98	52%	84	53%	95	36%

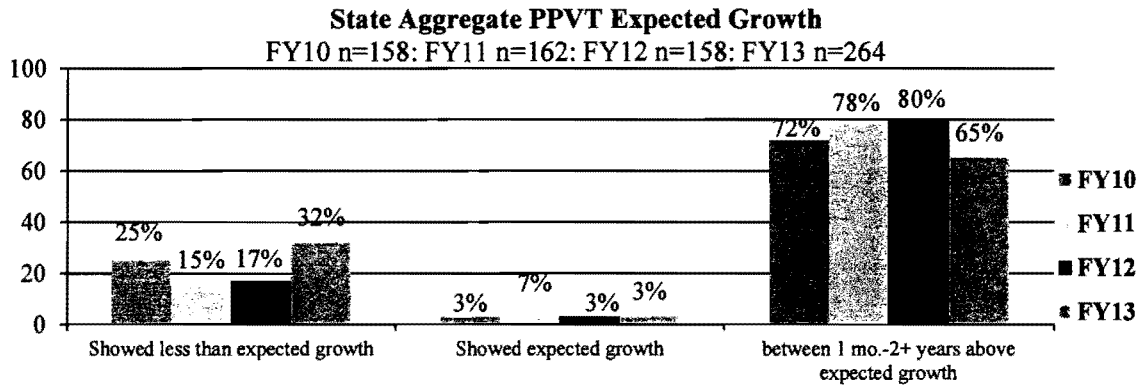
State Aggregate PPVT All Program Percentages (Spring)

FY10 n=168; FY11 n=179; FY12 n=158; FY13 n=264



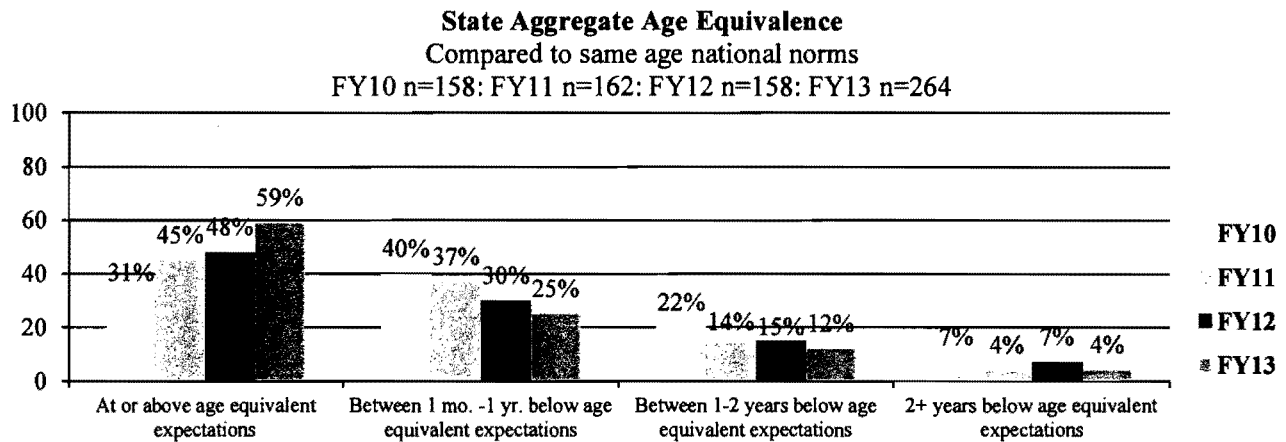
	2010	% of (n=168)	2011	% of (n=179)	2012	% of (n=158)	2013	% of (n=264)
Top Quartile (75 th -100 th percentile)	13	8%	36	20%	13	19%	67	25%
Second Quartile (50 th -74 th percentile)	34	20%	45	25%	22	22%	75	28%
Third Quartile (25 th -49 th percentile)	47	28%	50	28%	39	28%	53	20%
Bottom Quartile (0-24 th percentile)	74	44%	48	27%	84	31%	69	26%

Another PPVT comparison is a growth model. It shows each child's growth in months compared to expected growth. If there are seven months between the pre and post we expect to see seven months of growth for the child.



	2010	% of (n=158)	2011	% of (n=162)	2012	% of (n=158)	2013	% of (n=264)
1 mo.- 2+ years above	114	72%	127	78%	126	80%	171	65%
Expected growth	5	3%	11	7%	5	3%	8	3%
Less than expected growth	39	25%	24	15%	27	17%	85	32%

As well as percentile national comparison and the growth model the PPVT provides an Age Equivalence compared to national norms for same age children.

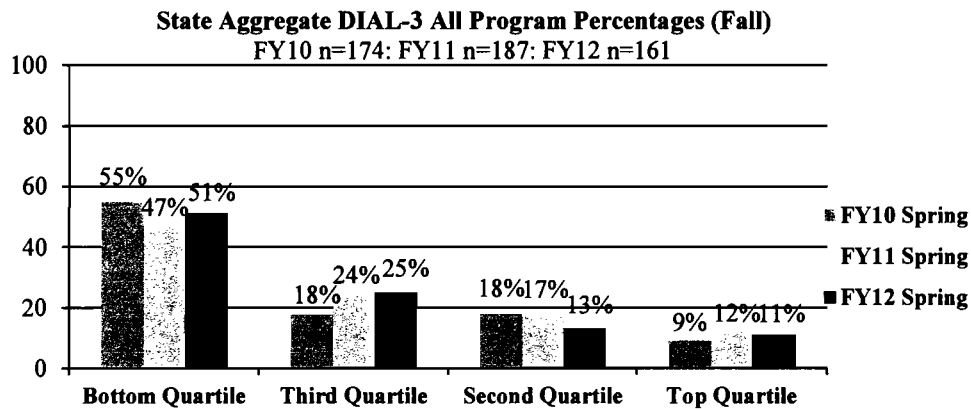


	2010	% of (n=158)	2011	% of (n=162)	2012	% of (n=158)	2013	% of (n=264)
At or above age equivalence	49	31%	73	45%	76	48%	155	59%
1 mo. - 1 year below	63	40%	60	37%	48	30%	66	25%
1-2 years below	35	22%	23	14%	23	15%	33	12%
2+ years below	11	7%	6	4%	11	7%	10	4%

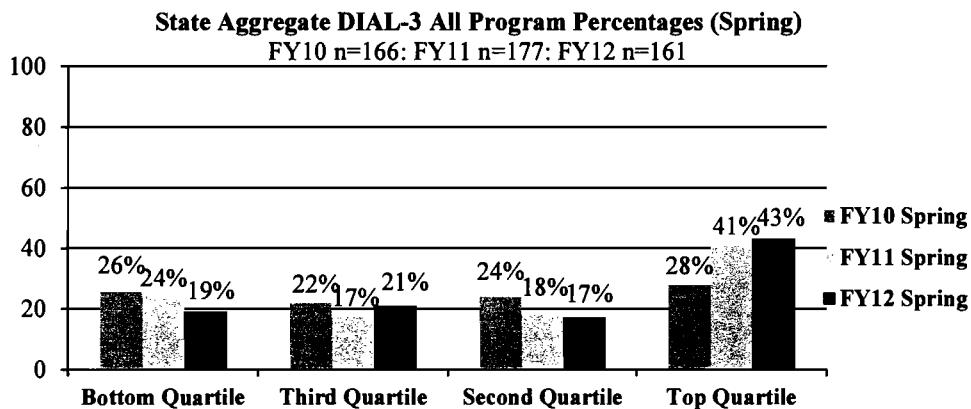
Developmental Indicators for the Assessment of Learning- Third Edition (DIAL-3)

In the fall and spring, students' developmental skills were measured using the *Developmental Indicators for the Assessment of Learning-Third Edition (DIAL-3)*. The three performance areas tested were motor, concepts, and language. The results provided are for students who completed both fall and spring assessment data for the FY10, FY11, and FY12 school years.

Based on the national percentile rankings of the DIAL-3, the percentage of students in each quartile of the *TOTAL SCORE* was as follows:



Top Quartile (75 th -100 th percentile)	16	9%	22	12%	18	11%
Second Quartile (50 th -74 th percentile)	31	18%	32	17%	21	13%
Third Quartile (25 th -49 th percentile)	31	18%	45	24%	40	25%
Bottom Quartile (0-24 th percentile)	96	55%	88	47%	82	51%



Top Quartile (75 th -100 th percentile)	46	28%	73	41%	70	43%
Second Quartile(50 th -74 th percentile)	40	24%	32	18%	28	17%
Third Quartile (25 th -49 th percentile)	37	22%	30	17%	33	21%
Bottom Quartile (0-24 th percentile)	43	26%	42	24%	30	19%