



THE STATE
of **ALASKA**
GOVERNOR MIKE DUNLEAVY

Department of Corrections

OFFICE OF THE COMMISSIONER

PO Box 112000, Suite 201
Juneau, Alaska 99811-2000
Main: 907.465.3480
Fax: 907.465.3315

February 6, 2025

The Honorable Donna Mears, Co-Chair
The Honorable Rebecca Himschoot, Co-Chair
House Community & Regional Affairs Committee
Alaska State Legislature
Capitol Building, Room 124
Juneau, AK 99801-1182

Sent via email: House.Community.And.Regional.Affairs@akleg.gov

Dear Co-Chair Mears and Co-Chair Himschoot,

This letter serves as the Department of Corrections' (DOC) written response to questions asked during the DOC Overview before the House Community & Regional Affairs on January 28, 2025.

The DOCs responses are as follows:

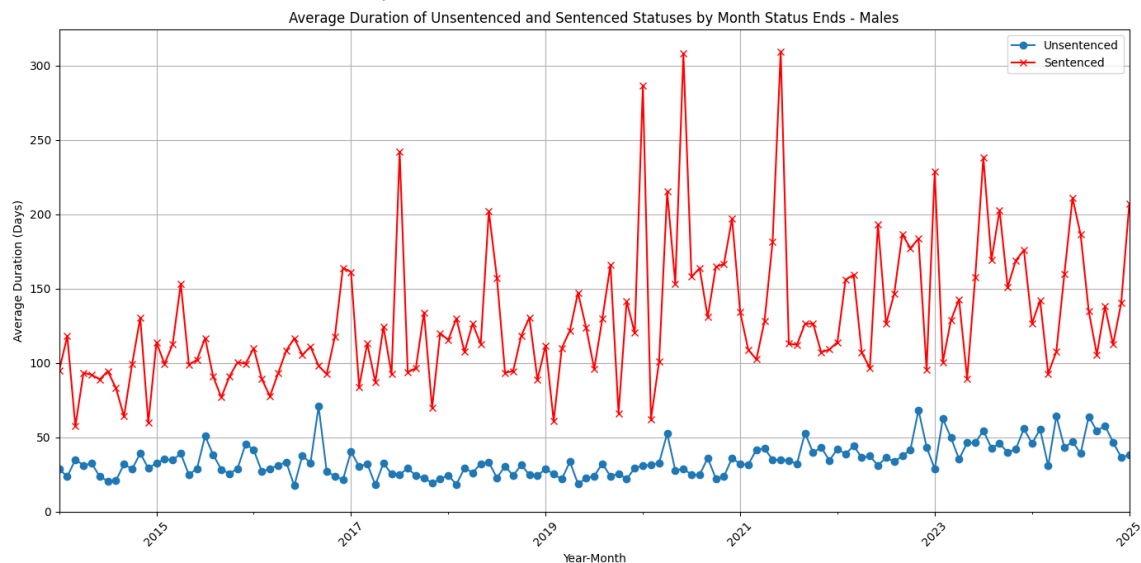
- *Rep. Himschoot and Rep. Prax asked for information surrounding the Community Jail Program*
 - Attachment 1 shows all community jail contracts, attachment 2 shows the Community and Regional Jails Analysis FY13 thru FY25, attachment 3 shows the intent language. The Community and Regional Jail Standards for Operation can be found on the DOC main page under 'Quick Links' or by following [this link](#).

- *Representative Prax asked for enrollment, completion, and wait list data for programs in each facility.*

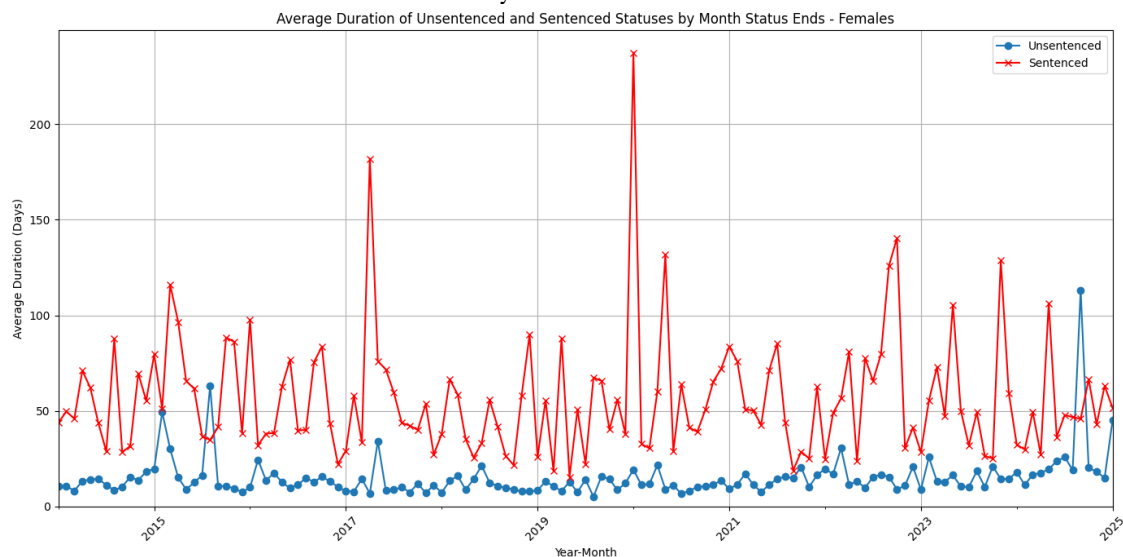
- Attachment 4 is the list of Vocational Reentry Programs, showing the unique participants and program completions. Attachment 5 shows the waitlist information per facility.

- *Representative Himschoot asked for a 10-year lookback of sentenced vs. unsentenced; male vs. female*

- This graph shows the average duration of sentenced and unsentenced males over the last 10 years

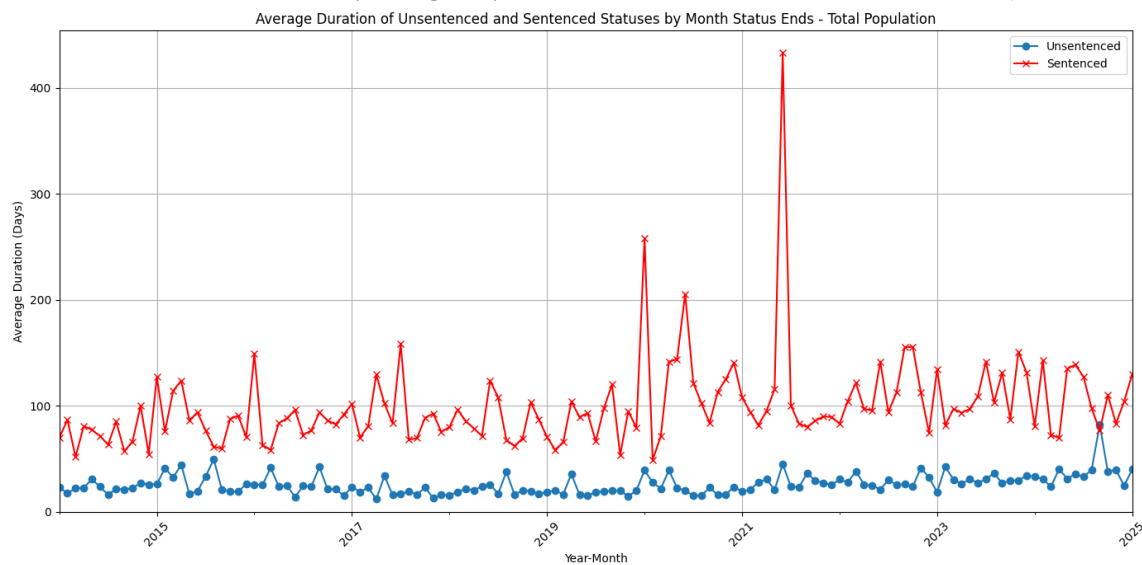


○ This graph shows the average duration of sentenced and unsentenced females over the last 10 years

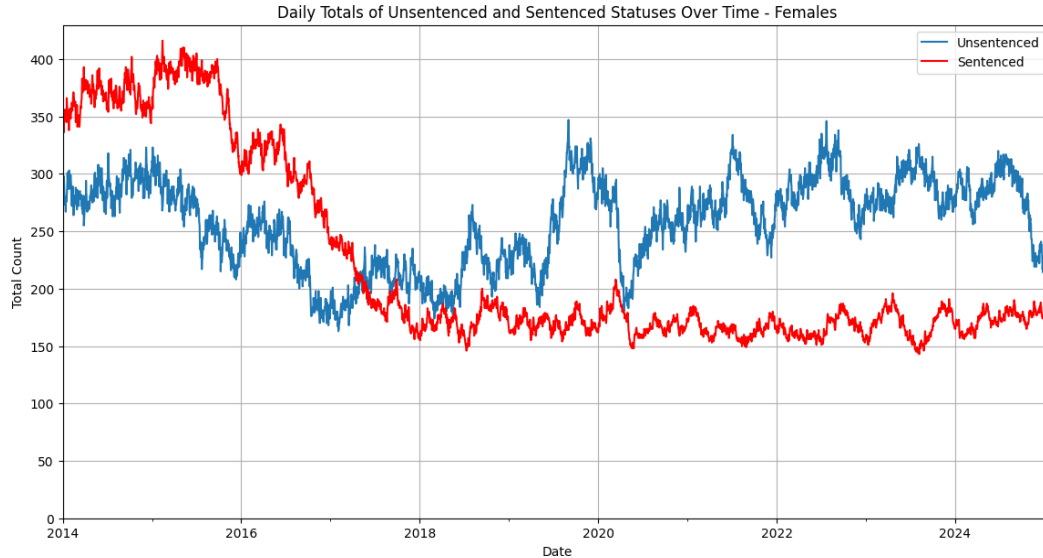


- Representative Holland asked about the average length of stay

○ This graph shows the average length of stay for both the sentenced and unsentenced population. (Spikes can occur if only one or a few offenders who had a very long stays were released in the same month.)



- *Representative Hall asked for a month by month trend for unsentenced female population*
 - This graph shows the daily totals of unsentenced and sentenced females



Thank you for allowing us to respond, and for your continued support of the Department of Corrections.

Sincerely,

Jen Winkelman
Commissioner
Department of Corrections