

# DEPARTMENT OF CORRECTIONS

DEPARTMENT OVERVIEW

JANUARY 28, 2025



Presented by Commissioner Jen Winkelman



# MISSION AND CORE SERVICES

- Mission: To provide secure confinement, reformatory programs, and a process of supervised community reintegration to enhance the safety of our communities
- Department FY2024 Positions: 2,124 PFT
- Department FY2024 Budget Request: \*\$481,123.2

Department Divisions	Core Service: Secure Confinement	Core Service: Supervised Release	Core Service: Reformatory Programs
Institutions	X	X	X
Health & Rehabilitation Services	X		X
Pretrial, Probation, and Parole		X	X
Administrative Services	X	X	X

\*\$ in thousands



# CORE SERVICES

## Secure Confinement

- 13 in-state correctional facilities
- 14 regional community jails
- Classification and furlough
- Inmate transportation
- Physical health care
- Correctional academy

## Supervised Release

- Statewide pretrial, probation and parole offices
- 7 community residential centers
- Electronic monitoring
- Correctional academy
- Parole board

## Reformative Programs

- Behavioral health care
- Substance abuse treatment
- Sex offender management
- Education and vocational programs
- Domestic violence intervention programs
- Faith-based services
- Recidivism reduction
- Reentry services

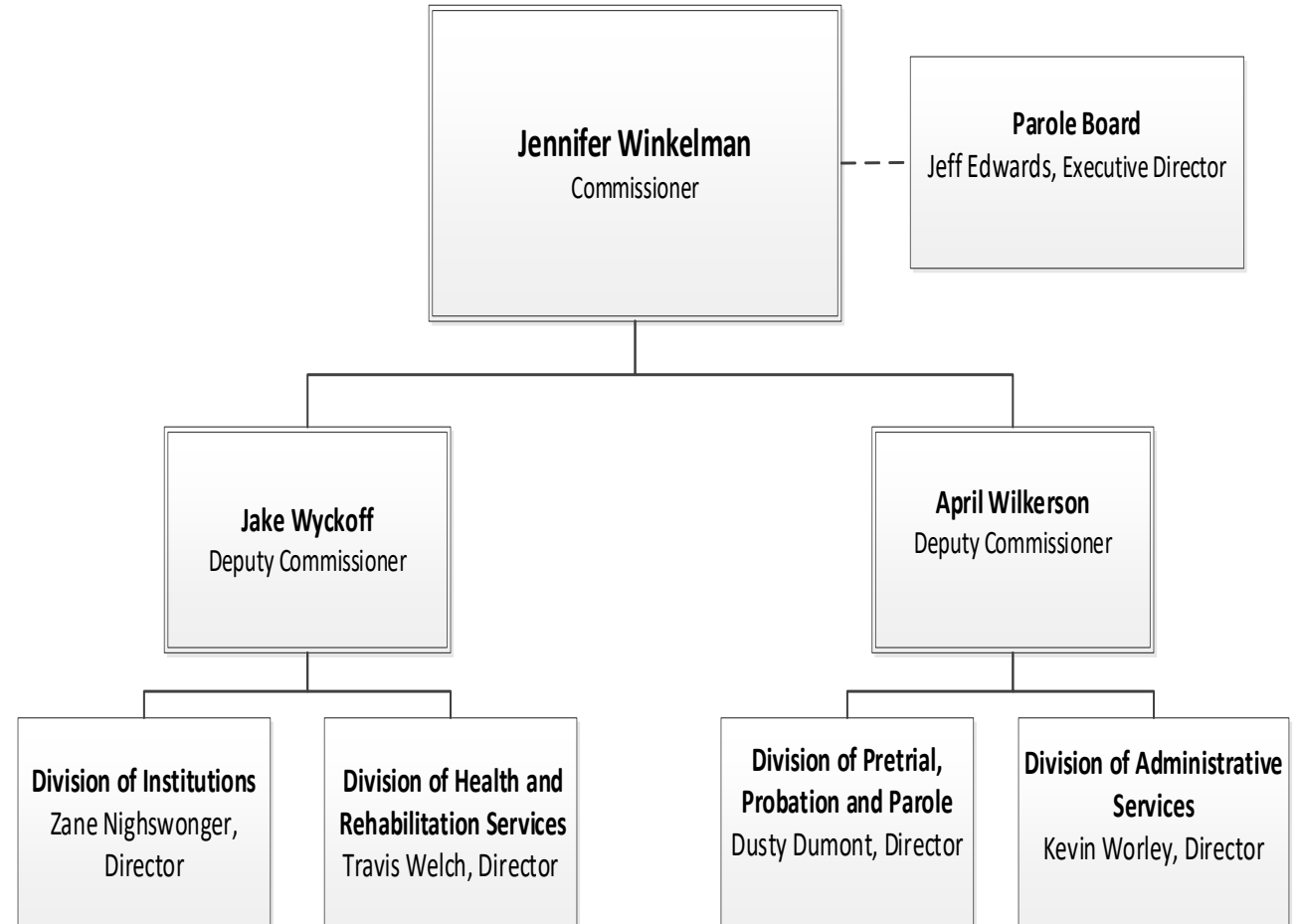
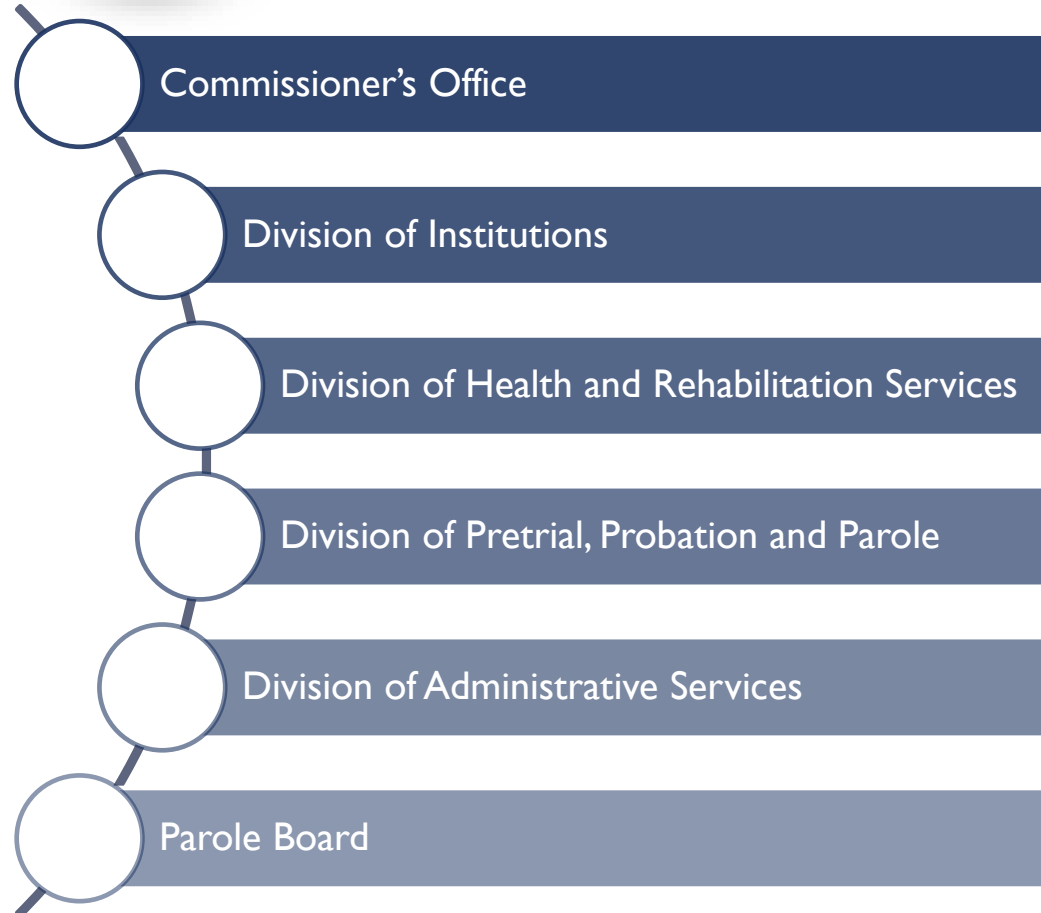


# DOC AT A GLANCE

- Alaska is one of seven states that operate a unified correctional system. A state unified system is one in which there is an integrated state-level prison and jail system.
- DOC booked 26,998 offenders into its facilities in FY2024.
  - ✓ 16,868 were unique offenders
  - ✓ 567 were non-criminal Title 47 bookings
- As of January 1, 2025, DOC was responsible for 9,767 individuals.
  - ✓ 4,266 offenders in jail or prison
  - ✓ 250 offenders on sentenced electronic monitoring (EM)
  - ✓ 364 offenders in community residential centers (CRCs)
  - ✓ 3,382 offenders on probation or parole
  - ✓ 1,505 defendants on pretrial supervision (1,029 on pretrial EM)



# ORGANIZATIONAL CHART





# FY2024 MAJOR ACCOMPLISHMENTS

- Partnered with the Department of Family and Community Services and Alaska Psychiatric Institute to establish and open the jail-based restoration program at the Anchorage Correctional Complex.
- Initiated the expansion of community placement options by using alternatives to the traditional community residential center placements. The department is running a pilot project on these placements, utilizing True North Recovery and Alaska Addiction and Rehabilitation Services (AARS).
- Utilized the American Foundation for Suicide Prevention (AFSP) and the National Commission on Correctional Health Care (NCCHC) resource guide to complete a thorough proactive needs assessment of all 13 correctional facilities statewide. The finalized report and recommendation are part of Project 2025, an effort to reduce in-custody annual suicides rates 20 percent by Calendar Year (CY) 2025.
- Partnered with the Carpenter's Union and implemented a pre-apprentice carpentry program at Hiland Mountain and Wildwood Correctional Centers.
- Implemented a pilot tablet program at Hiland Mountain Correctional Center. These tablets are used in a limited/restricted capacity for: Digital Law Library, Attorney Visitation, Court hearings, and the inmate handbook. In addition, the department and the Alaska Court System partnered to have Court tablets operational for inmates at Goose Creek Correctional Center.
- Under the department's statewide Wellness Program for employees and inmates, formalized a Critical Incident Stress Management/Peer Support team. The department trained 35 staff to be peer supporters and will be training additional supporters in early 2025. The Wellness Unit trained 54 Stronger Families trainers and implemented seven modules department wide. Approximately 1,000 department staff were trained in this program.



## KEY CHALLENGES

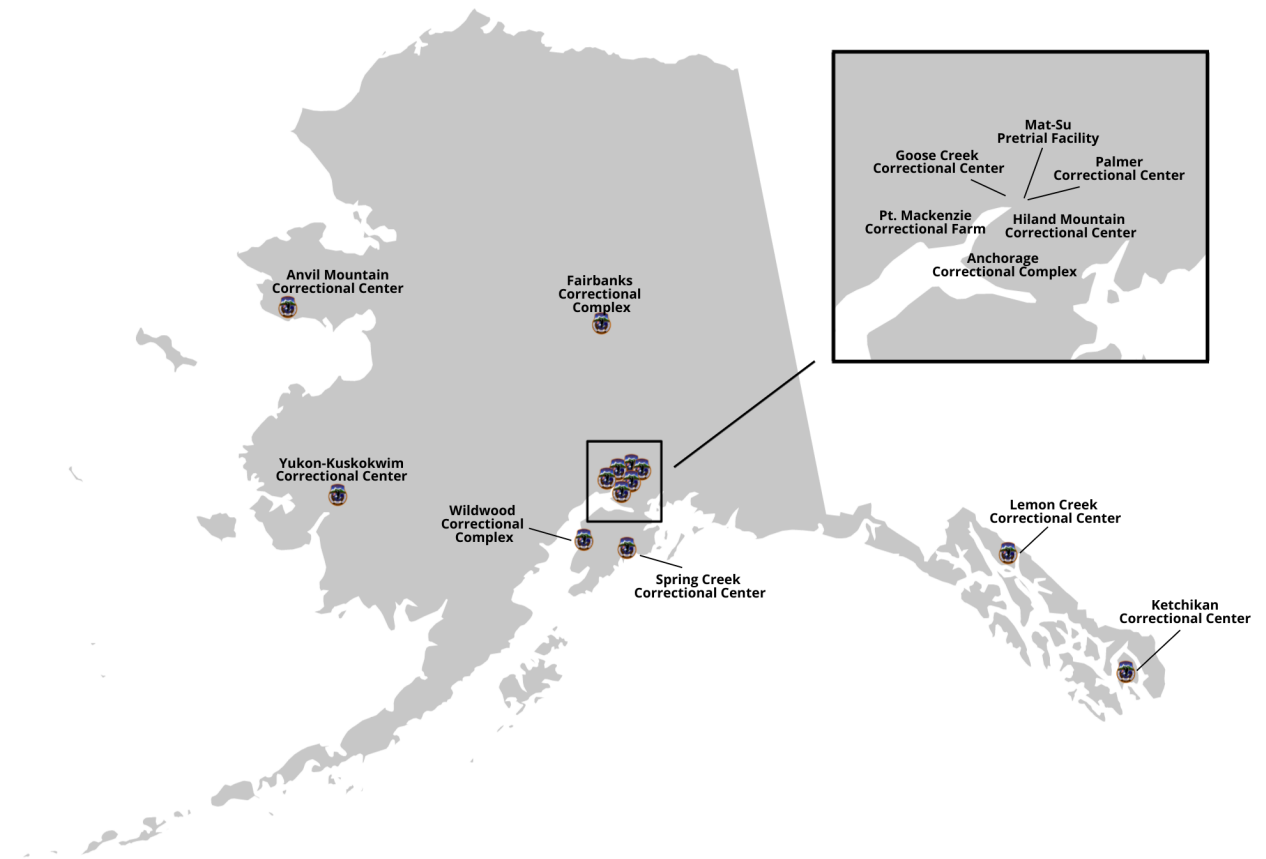
- Recruit, hire, and retain qualified staff to meet the challenge of public protection within fiscally responsible parameters
- Management and movement of the offender population; providing assurance of proper offender classification for placement in Correctional Institutions, Community Residential Centers, and Electronic Monitoring
- Control the cost and prevalence of chronic illnesses and communicable diseases among incarcerated offenders
- Reduce the ongoing deterioration of the facilities





# DIVISION OF INSTITUTIONS

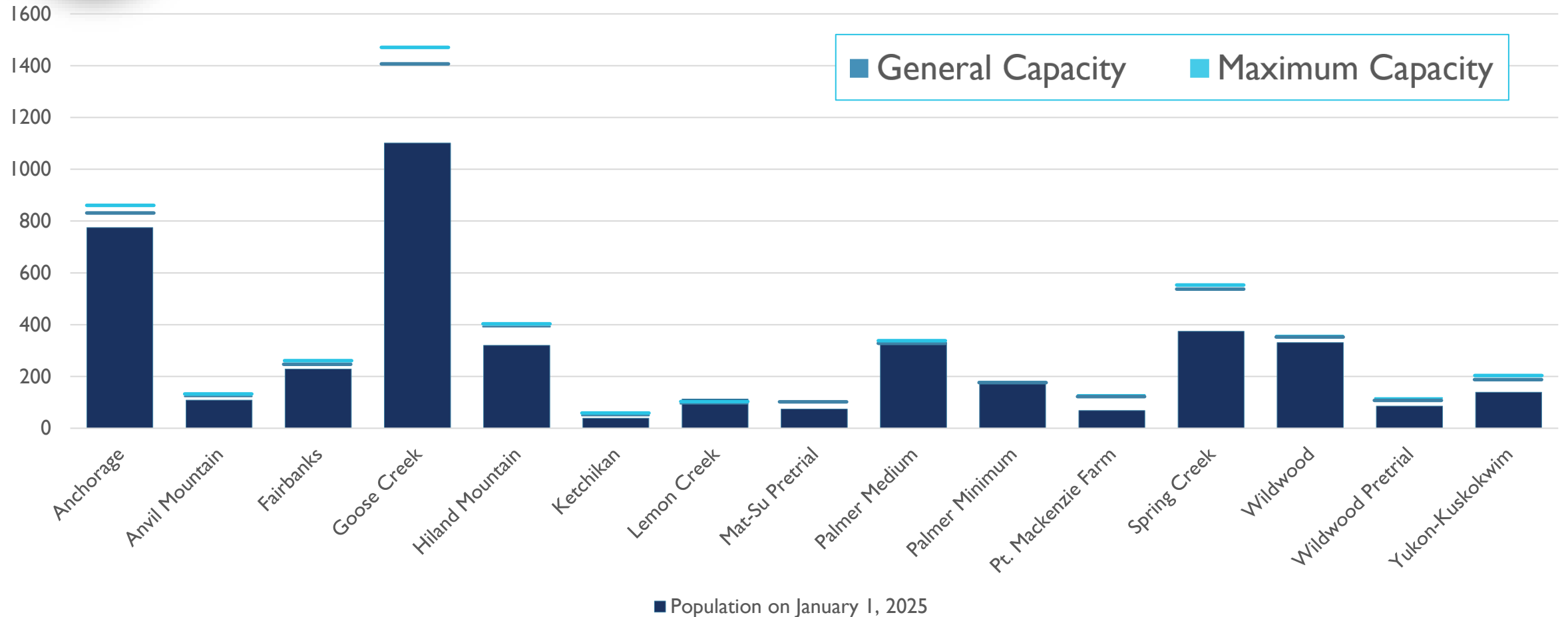
- Institution Director's Office
  - Inmate Time Accounting
  - Chaplaincy Program
  - Prison Rape Elimination Act Oversight
  - Inmate Grievance Resolution
  - Security Threat Group
- Inmate Transportation and Point of Arrest
  - Inmate Medical Transports
  - Inmate Housing Transports
  - K-9 Unit
  - Point of Arrest
- Classification and Furlough
  - Inmate Classification
  - Inmate Furlough
- 13 Correctional Centers
- 7 Community Residential Centers (CRC)
  - 5 Locations
- 6 Sentenced Electronic Monitoring (EM) Offices
- Out-of-State
  - Medical and Separatee placements







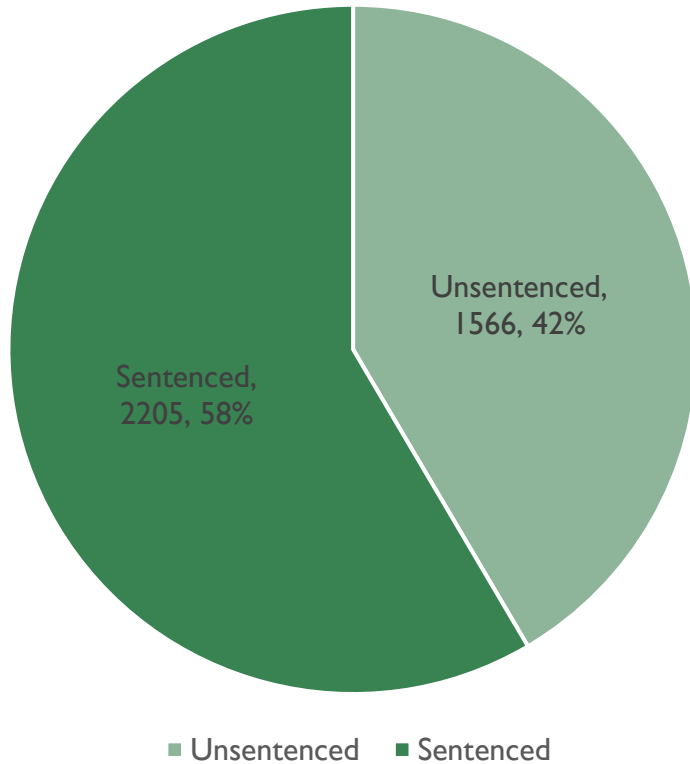
# FACILITY CAPACITY



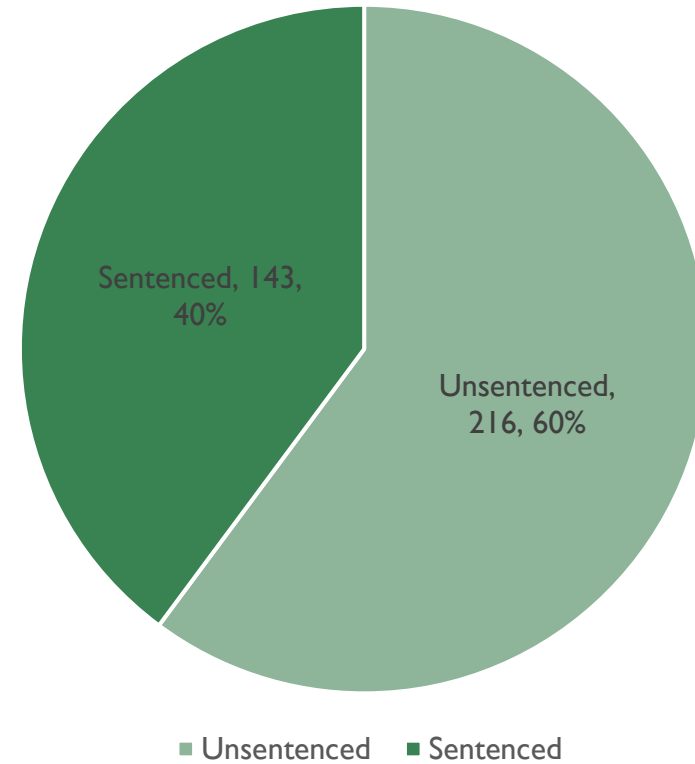


# PRISON POPULATION BY GENDER

## Male Population by Legal Status January 1, 2025



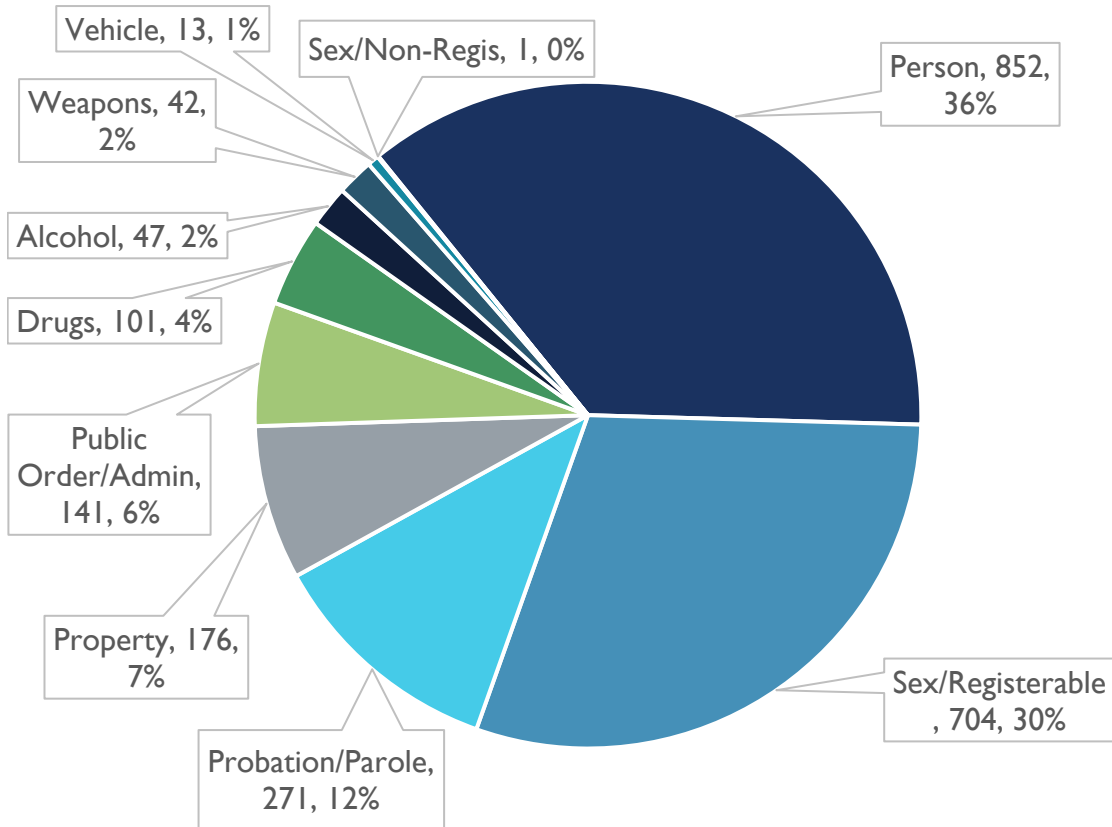
## Female Population by Legal Status January 1, 2025



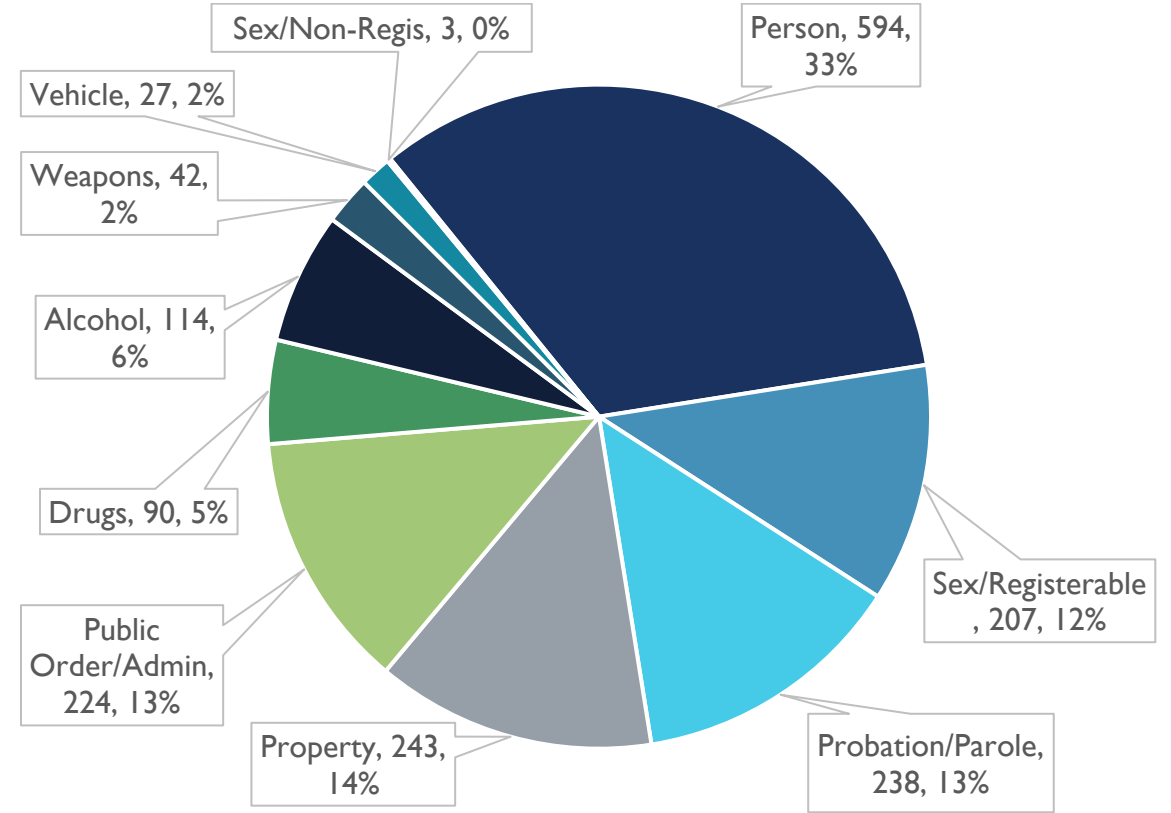


# SENTENCED AND UNSENTENCED POPULATION BY OFFENSE CLASS

## Sentenced January 1<sup>st</sup>, 2025



## Unsentenced January 1<sup>st</sup>, 2025





# DIVISION OF HEALTH & REHABILITATION SERVICES

## Health & Rehabilitation Director's Office

- Medical Oversight
- Medicaid Assistance

## Physical Health Care

- Medical
- Dental

## Behavioral Health Care

- Mental Health Services
- Assess Plan Identify & Coordinate (APIC)
- Institutional Discharge Planning Plus (IDP+)

## Substance Abuse

- Assessment
- Residential Treatment
- Institutional Out-Patient Treatment

- Sex Offender Management
  - Polygraph
  - Institutional Sex Offender Program
  - Community Sex Offender Program
- Domestic Violence Program
  - Batterer's Intervention Program
- Reentry & Recidivism Unit
  - Offender Reentry
  - Community Coordination
- Education/Vocational Programs
  - Basic Adult Education
  - Apprenticeship Training
  - Vocational Training



# DIVISION OF PRETRIAL, PROBATION, & PAROLE

- Probation and Parole Director's Office
  - Victim Service Unit
- Pretrial Services
  - Assessments
  - Supervision
  - Pretrial Electronic Monitoring
- Statewide Probation and Parole
  - 13 regional locations
  - Probation Accountability with Certain Enforcement
  - Pre-Sentencing Unit
  - Interstate Compact

- 14 Regional and Community Jails
  - Bristol Bay Borough
  - City of Cordova
  - City of Craig
  - City of Dillingham
  - City of Haines
  - City of Homer
  - City of Kodiak
  - City of Kotzebue
  - North Slope Borough
  - City of Petersburg
  - City of Sitka
  - City of Unalaska
  - City of Valdez
  - City of Wrangell



# BOARD OF PAROLE

The Board of Parole consists of five members appointed by the Governor

## ■ Board of Parole

- Discretionary Parole
- Mandatory Parole
- Special Medical Parole
- Geriatric Parole
- Executive Clemency Program

## ■ Parole Board Members

- Leitoni Matakaiongo Tupou, Chair
- Sarah Possenti, Vice Chair
- Steve Meyer, Member
- Jason Wilson, Member
- Ole Larson, Member



# DIVISION OF ADMINISTRATIVE SERVICES

- Administrative Services
  - Finance
  - Inmate Banking
  - Auditing and Internal Controls
  - Alaska Police Standards Council (APSC) Background and Certification
  - Construction Procurement and Space Liaison
  - Alcohol Ignition Interlock Device Certification
- Information Technology
  - Alaska Corrections Offender Management System
  - Inmate Law Library
  - Inmate Technology Support
- Research and Records
  - Permanent Fund Dividend Eligibility Determination/Appeals
  - Research and Reporting
  - Criminal Justice Information Security
  - Data Management
  - Web Page
  - Inmate DNA Collections and Tracking
- Facilities, Capital Unit & OSHA Compliance
  - Management Renovation, Repairs, and Construction Management
  - OSHA Compliance and Oversight





# OFFICE OF THE COMMISSIONER

## ■ Commissioner's Office

- Constituent Relations
- Compliance Standards
- Inmate ADA Grievances
- Public Information
- Policy and Procedures
- Employee Wellness Program
- Human Resources
- Employee Backgrounds
- Budget and Projections
- Recruitment and Retention
  - Recruitment Outreach
  - Applicant Assistance
  - Officer Medical Reimbursement
  - Recruitment Incentive Leave Program
  - Correctional Officer Seniority Tracking

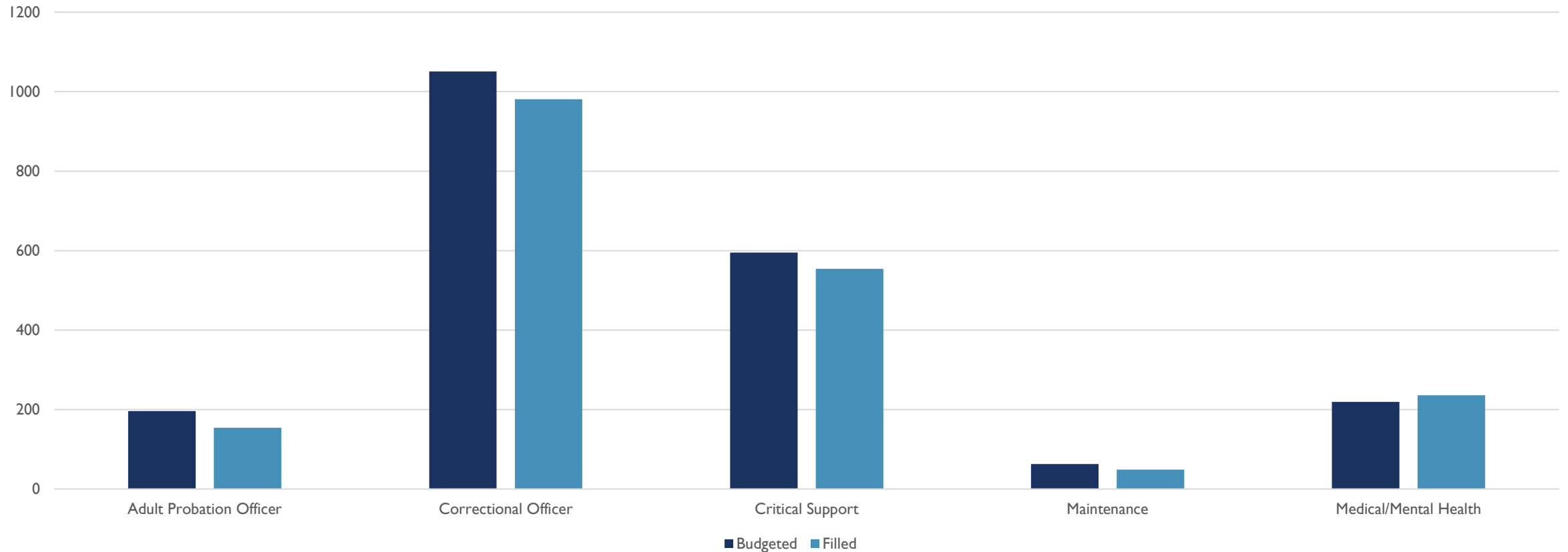
## ■ Training Academy

- Basic Officer Training
- Field Officer Training
- Prisoner Transportation Officer Training
- Firearm / Taser Training and Certification
- Municipal Officer Academy
- Offender Time Accounting
- Use of Force
- Methods of Instruction



# POSITIONS BY CATEGORY

FY2025 Management Plan  
Budgeted vs Filled By Category





# GOALS AND OBJECTIVES

Health and Well Being of Staff

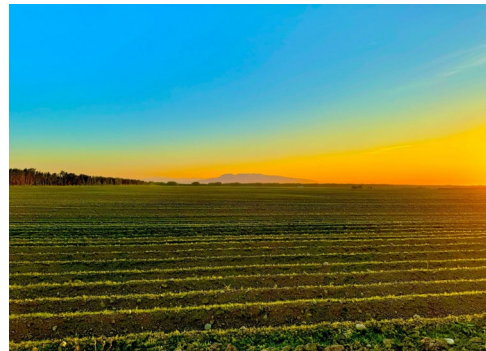
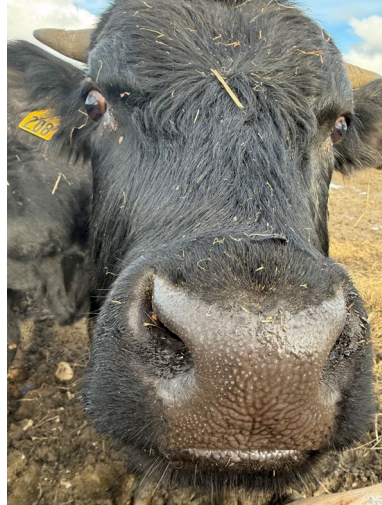
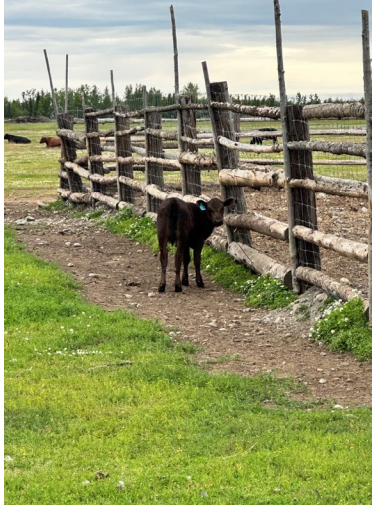
Inmates, Defendants and Probationer/Parolees leave us better than when they entered the system

Identifying Efficiencies and Resources to Reduce Recidivism





# THANK YOU!





# CONTACT INFORMATION

## QUESTIONS?

**Jen Winkelman, Commissioner**  
**[jennifer.winkelman@alaska.gov](mailto:jennifer.winkelman@alaska.gov)**  
**(907)465-3180**

**April Wilkerson, Deputy Commissioner**  
**[april.wilkerson@alaska.gov](mailto:april.wilkerson@alaska.gov)**  
**(907)465-3460**

**Kevin Worley, Administrative Services Director**  
**[kevin.worley@alaska.gov](mailto:kevin.worley@alaska.gov)**  
**(907)465-1416**