

Alaska Commission on Postsecondary Education

Alaska Department of Education and Early Development

Sana Efird, Executive Director of the Alaska Commission on Postsecondary Education (ACPE)

Kerry Thomas, Executive Officer of the Alaska Student Loan Corporation (ALSC)

February 16, 2023



Mission

Promote access to and success in education and career training beyond high school

MISSION IN ACTION

Financial aid & loan programs for college and career training

Education planning resources for students, schools, families, stakeholders

Early postsecondary outreach programming for grades K-8

Advocacy and support for postsecondary participation in Alaska

Institutional Authorization & Consumer Protection

Budget Organizational Chart

State Board of Education & Early Development and Commissioner

- Executive Administration

Division of Innovation & Education Excellence

- Student & School Achievement
- Teacher Certification
- Early Learning Coordination
- Pre-Kindergarten Grants

Division of Finance & Support Services

- K-12 Aid to School Districts
- K-12 Support
- School Finance & Facilities
- Child Nutrition

Division of Administrative Services

- Administrative Services
- Information Services
- EED State Facilities Rent

Division of Libraries, Archives & Museums

- Library Operations
- Archives
- Museums
- Online with Libraries
- Live Homework Help
- APK Building Facilities Maint.
- Broadband Assistance Grants

Mt. Edgecumbe High School

- Mt. Edgecumbe High School
- MEHS Facilities Maint.
- MEHS Aquatic Center

Boards & Commissions

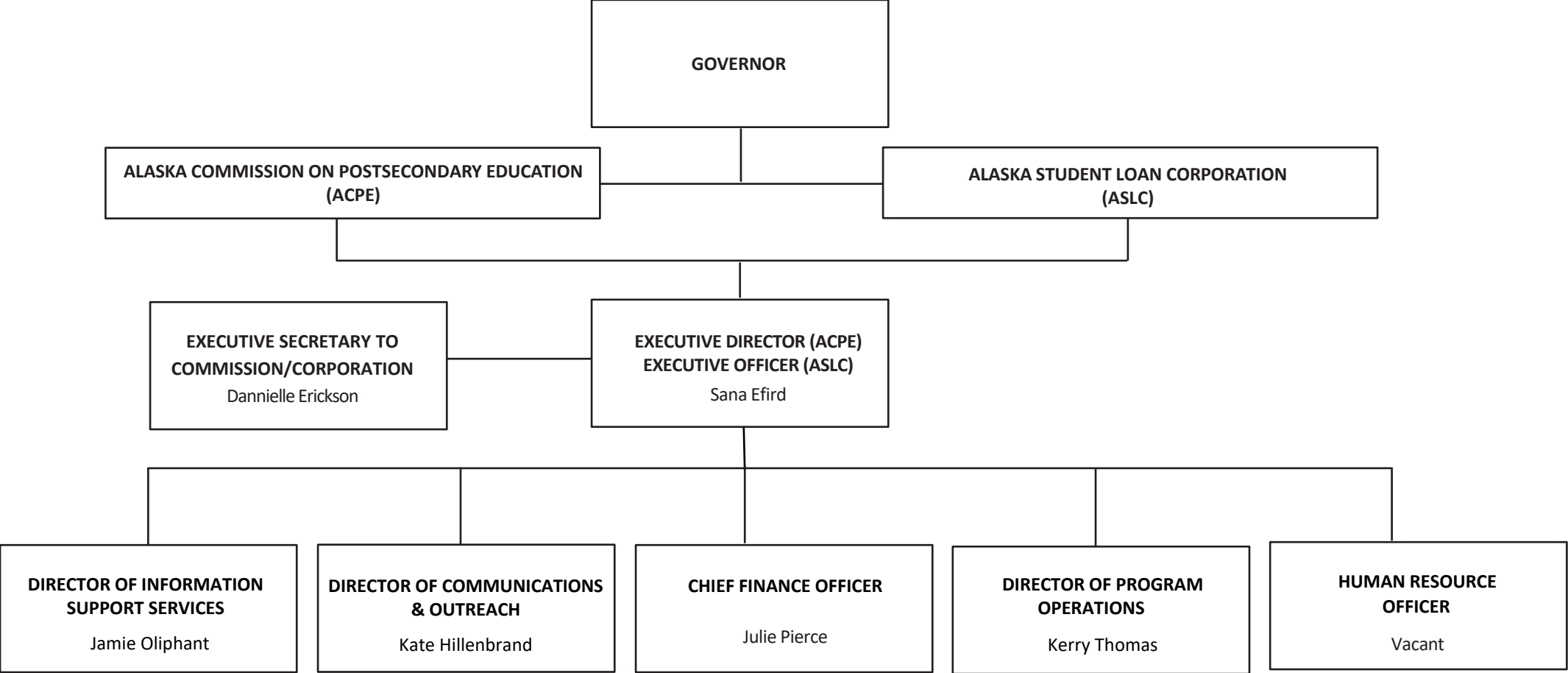
Alaska State Council on the Arts (ASCA)

Professional Teaching Practice Commission (PTPC)

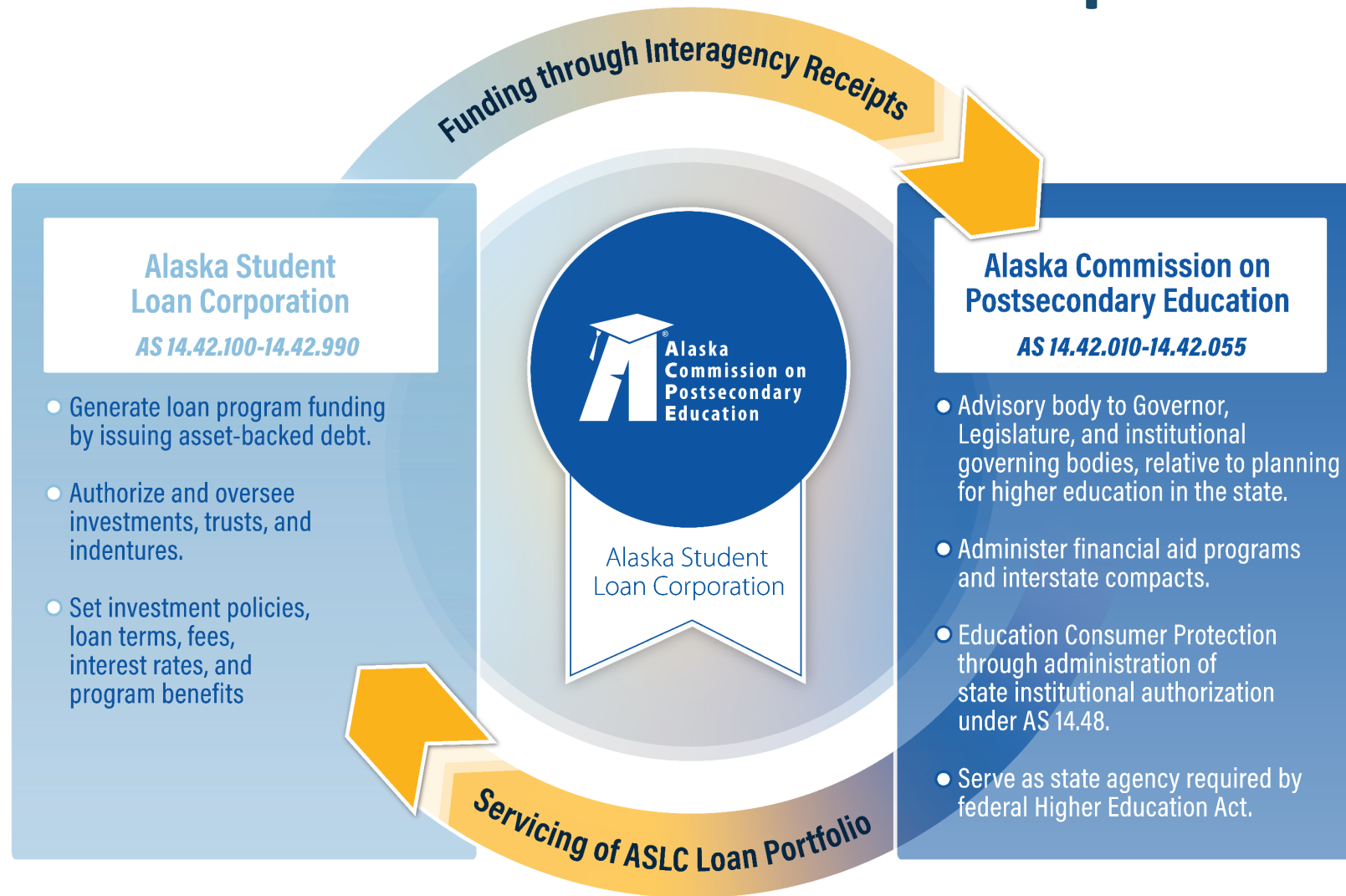
Alaska Commission on Postsecondary Education (ACPE)

- Program Admin & Operations
- Washington, Wyoming, Alaska, Montana, Idaho (WWAMI) Medical Education
- AK Performance Scholarship Award
- AK Education Grants
- AK Student Loan Corporation

Alaska Commission on Postsecondary Education Organizational Chart



Alaska Commission on Postsecondary Education & Alaska Student Loan Corporation



Alaska State Education Loan Program

Alaska Supplemental Education Loans (ASEL)

Alaska Family Education Loans (FEL)

Alaska Education Loan Refinancing Program (REFI)

ACPE Education Loans offer:

- Competitive interest rates, no fees, or pre-payment penalties
- Career Training, Undergraduate, Graduate education programs
- Option to consolidate payments into one loan from multiple lenders

ACPE, through its ongoing strategic planning efforts, is re-envisioning its student loan programs to be more responsive to the needs of Alaska student loan borrowers.

acpe.alaska.gov/loans

Alaska State Grant & Scholarship Opportunities

Alaska Education Grant (AEG)

- Need-based – Students must complete the FAFSA
- Alaska Resident, minimum of ½ time enrollment in undergraduate or vocational program
- Grants are awarded to eligible applicants in order of the highest financial need and the date the FAFSA was filed, until available funds are exhausted
- Awards range from **\$500 to \$4,000** per academic year

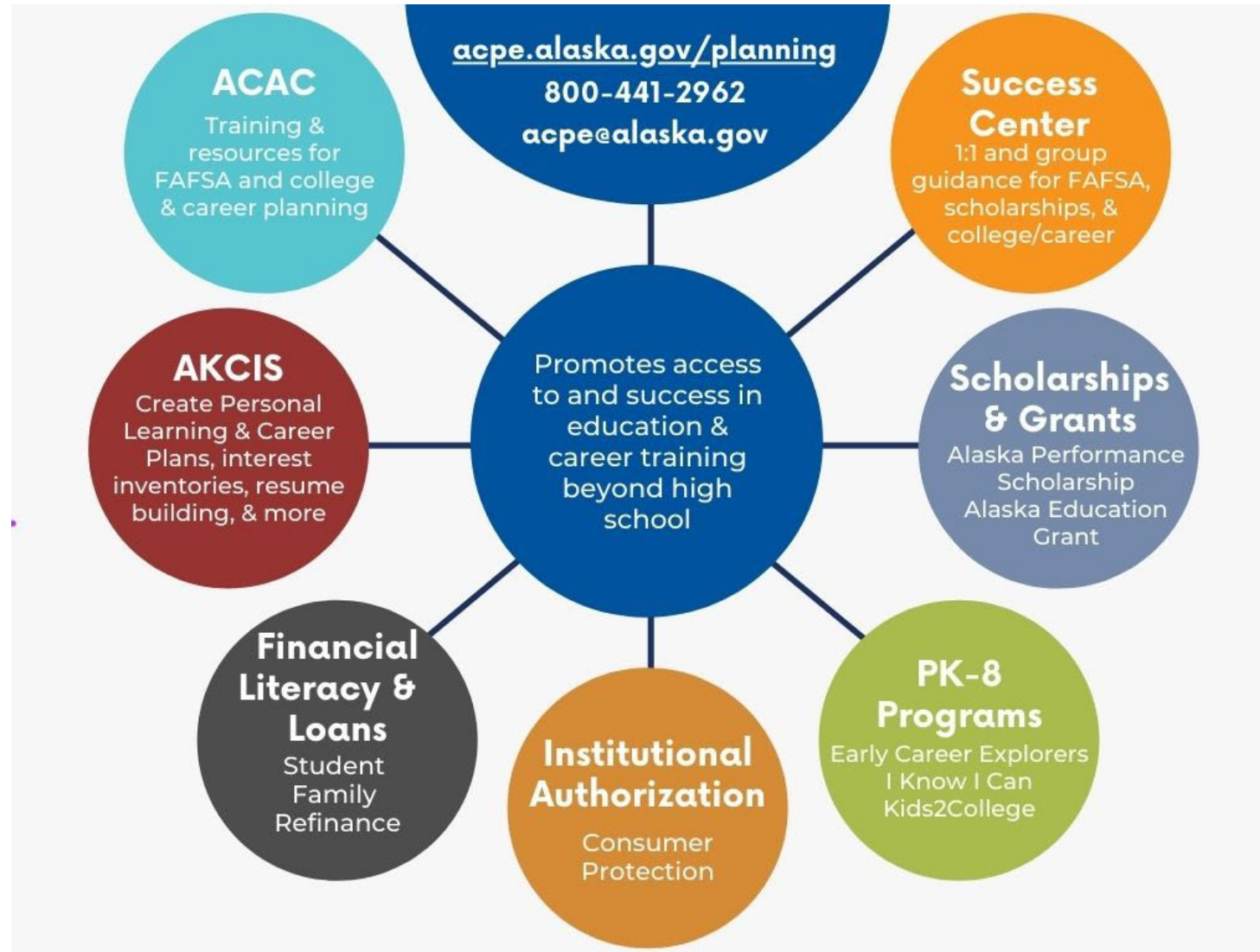
acpe.alaska.gov/aeg

Alaska Performance Scholarship (APS)

- Up to **\$19,020** across eight (8) semesters (within six years of high school graduation)
- Eligibility Criteria
 - Complete a rigorous high school curriculum
 - Earn qualifying GPA
 - Earn minimum score on college placement or work ready exams (ACT, SAT, WorkKeys)
- Application is the Free Application for Federal Student Aid (FAFSA) – must be filed before June 30 – and include an Alaska institution
- Utilize [Alaska Student Aid Portal \(ASAP\)](https://alaska.studentaid.gov)

aps.alaska.gov

Outreach Resources



Outreach Resources

Alaska Career Information System (AKCIS)

- **Online personal learning and career planning system** FREE to Alaskans
- Students assess their interests and explore of **16 National Career Clusters and over 570 occupations**
- Relevant for **grades 7 through 12**, and for **adult populations** looking to expand their educational and career opportunities
- For information and assistance in sharing this resource, contact akcis@alaska.gov

acpe.alaska.gov/planning/akcis

ACPE Success Center

- Offering **postsecondary education resources** to students, families, and a wide variety of organizations and institutions across Alaska and beyond
- Financial Aid Support – **Free Application for Federal Student Aid (FAFSA) completion**, loan application submissions, scholarship research
- Group Presentations – Schools, organizations, community groups
- Funding Your Future, Filling out the FAFSA, Alaska Performance Scholarship

acpe.alaska.gov/planning/success-center

Outreach Resources

Alaska FAFSA Completion Initiative

Launch of [ACPE's Master the FAFSA Training](#). The purpose of this Training is to **empower education stakeholders and provide them with the knowledge and understanding of the FAFSA process so that they can independently assist their students and families with successful FAFSA completion**. The Training will be available every Tuesday and Thursday, from 2:00 to 3:30pm, between January and March 2023.



Outreach Resources

2022 Alaska Higher Education Almanac

The Almanac offers Alaska's higher education stakeholders and policy-makers a source of relevant data and content about the landscape of higher education in Alaska. The 2022 Almanac also includes an in-depth view into the ongoing impact of the COVID-19 pandemic on Alaska's students and postsecondary education opportunities.

COLLEGE ENROLLMENTS OF HIGH SCHOOL GRADUATES

The past 8 years has seen an average 2% decrease in the fraction of high school graduates enrolled in college 1-year following graduation (Exhibit 15). Of those enrolled in postsecondary education from Alaska's high school class of 2020, half attended in-state, representing 9% fewer in-state postsecondary enrollments than from the class of 2019 (Exhibit 16). The postsecondary enrollment and progress of class of 2014 is given in Exhibit 17.

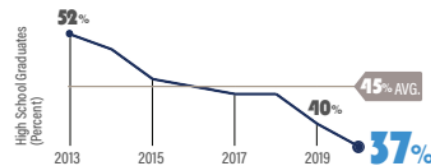
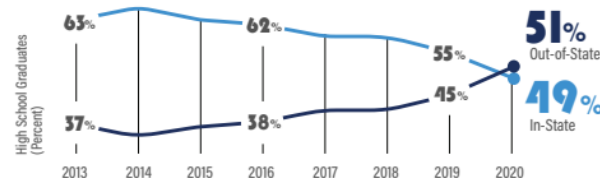


EXHIBIT 15 (LEFT) Alaska's class of 2020 high school graduate enrollments. 37% were enrolled in a postsecondary institution within a year following their high school graduation.

EXHIBIT 16 (BELOW) Proportion of Alaska high school graduates enrolling in-state vs. out-of-state.



2 OF 5
ALASKA HIGH SCHOOL GRADUATES FROM THE CLASS OF 2020 ENROLLED IN COLLEGE WITHIN 1-YEAR FOLLOWING HIGH SCHOOL GRADUATION.

In-state & out-of-state enrollments for class of 2020
WERE NEARLY EQUAL
1,500
STUDENTS EACH



Exhibit 25

FIRST-TIME FRESHMAN POSTSECONDARY ENROLLMENTS

DEFINITION:
First-time Freshman Enrollments a student's first enrollment into a postsecondary institution at any point after graduating high school.

The 2020 academic year saw an unprecedented decrease in postsecondary enrollments:

10% DECREASE IN FIRST-TIME FRESHMAN POSTSECONDARY ENROLLMENTS BOTH IN ALASKA AND NATIONALLY

1.3x GREATER RECOVERY

in 2021 of Alaska first-time freshman enrollments than national averages

ALASKA POSTSECONDARY ENROLLMENT TRENDS

12-month enrollment totals (undergraduate & graduate enrollments) continue to follow a declining trend at Alaska postsecondary institutions for academic years 2019 and 2020 (Exhibit 22-24). Fall 2019 and 2020 enrollment breakdowns by Alaska institution are given in Exhibit 26.

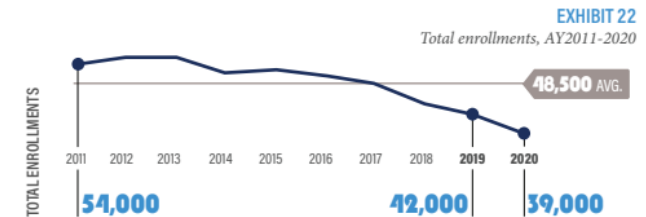
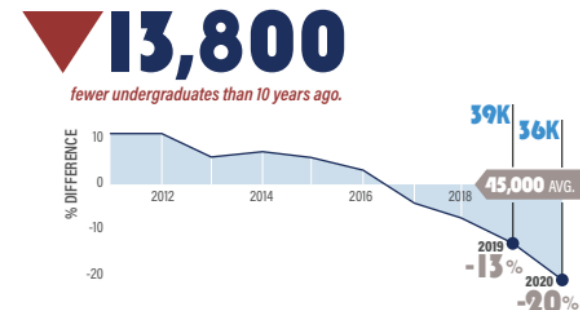


EXHIBIT 22

Total enrollments, AY2011-2020

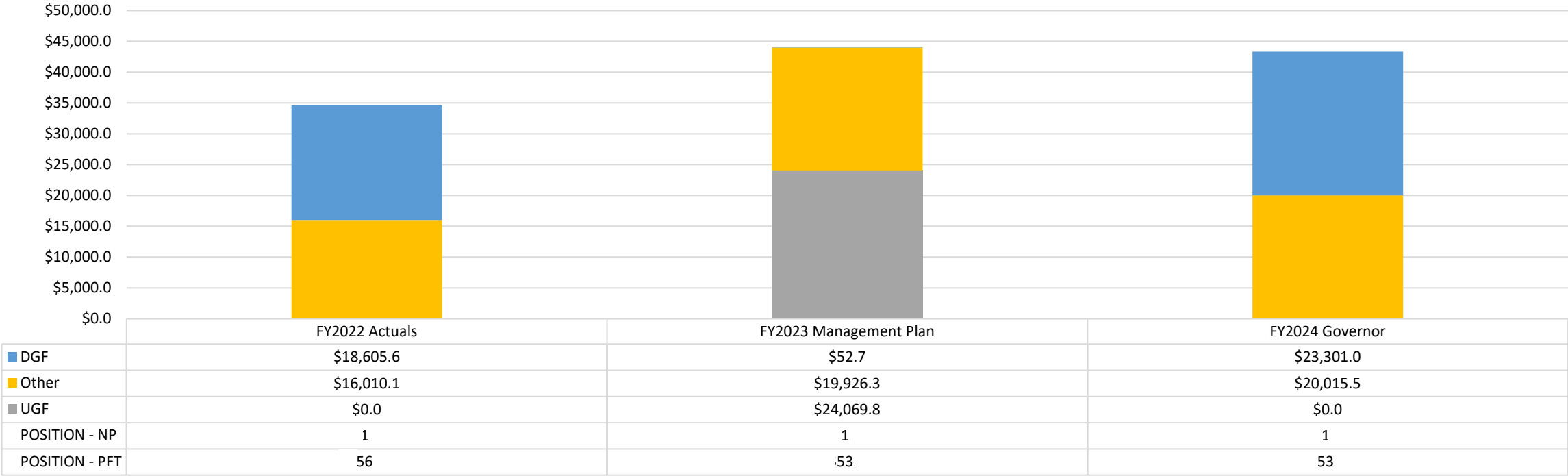
EXHIBIT 23
Undergraduate enrollment trend, AY2011-2020 (percent difference from the avg.)



Alaska Commission on Postsecondary Education

(\$ thousands)

Funding and Position History



FY2024 Governor			
Component	Other	DGF	Grand Total
AK Performance Scholarship Award	\$0.0	\$11,750.0	\$11,750.0
Alaska Education Grants	\$0.0	\$5,841.8	\$5,841.8
Loan Servicing	\$9,800.2	\$0.0	\$9,800.2
Program Admin & Operations	\$10,215.3	\$569.1	\$10,784.4
WWAMI Medical Education	\$0.0	\$5,140.1	\$5,140.1
Grand Total	\$20,015.5	\$23,301.0	\$43,316.5

Significant Changes in FY2024 Governor's Budget

Alaska Commission on Postsecondary Education

(\$ thousands)

- Continue expansion of the Washington, Wyoming, Alaska, Montana, Idaho (WWAMI) Medical Education Program by adding funding to the base budget, **\$1,647.5 Higher Education Investment Funds (HEIF)**
- WWAMI routine annual contract increase, **\$197.7 HEIF**
- Replace UGF funding for the Alaska Performance Scholarships, Alaska Education Grants, WWAMI, and Administration & Operations with HEIF, **(\$21,402.8) UGF / \$21,402.8 Higher Education Investment Fund (HEIF) – Net Zero Change**
- Additional authority due to increased fees for Institutional Authorization, **\$7.3 Statutory Designated Program Receipts (SDPR)**

Constituent Resources

- Loan Programs

<https://acpe.alaska.gov/LOANS>

- Financial Aid

<https://acpe.alaska.gov/FINANCIAL-AID>

- Institutional Authorization

<https://acpe.alaska.gov/Institutional-Authorization>

- Student Complaints

<https://acpe.alaska.gov/ConsumerProtection>

- Education Planning

<https://acpe.alaska.gov/PLANNING>

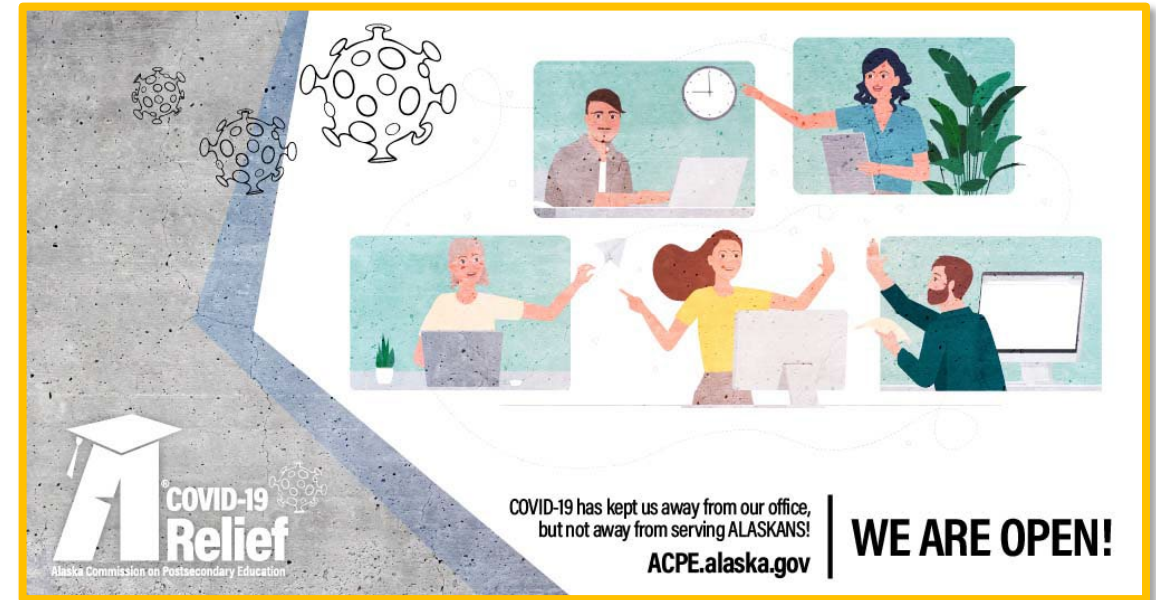


- Investor Relations

https://acpe.alaska.gov/Investor_Relations

Legislative Resources

- 2023 APS Outcomes Report
 - https://acpe.alaska.gov/Portals/3/APS/Pubs/APS_OutcomesReport_2023.pdf
- 2022 Higher Education Almanac
 - <https://acpe.alaska.gov/Portals/3/OTHER/Pubs/Almanac2022.pdf>
- Other Reports & Publications
 - <https://acpe.alaska.gov/Reports>
 - <https://acpe.alaska.gov/Publications>
- About ACPE & ASLC
 - <https://acpe.alaska.gov/About-Us>
- ACPE & ASLC Statutes & Regs
 - <https://acpe.alaska.gov/StatutesandRegulations>



Contact Information

Sana Efird, Executive Director of the Alaska Commission on Postsecondary Education (ACPE)

sana.efird@alaska.gov

(907) 465-6740

Kerry Thomas, Executive Officer of the Alaska Student Loan Corporation (ASLC)

kerry.thomas@alaska.gov

907-209-5290

Sabrina Javier, Administrative Services Director

sabrina.javier@alaska.gov

(907) 465-5531

Laurel Shoop, Legislative Liaison

laurel.shoop@alaska.gov

(907) 465-8703

Thank you!