



FOOD SECURITY WEEK 2023

STATUS OF HUNGER IN ALASKA: TUESDAY, FEBRUARY 14TH | 12:00PM



FOOD ACCESS FOR ALL ALASKANS

Education | Advocacy | Collaboration



WHAT IS FOOD SECURITY WEEK?





The Alaska Food Coalition (AFC) aims to **alleviate hunger, build healthy communities, and promote access to affordable, nutritious, and culturally appropriate food**. By cultivating a strong anti-hunger network for Alaskans, the Alaska Food Coalition's mission is to **create systems change to end hunger in Alaska**.

Areas of Focus:

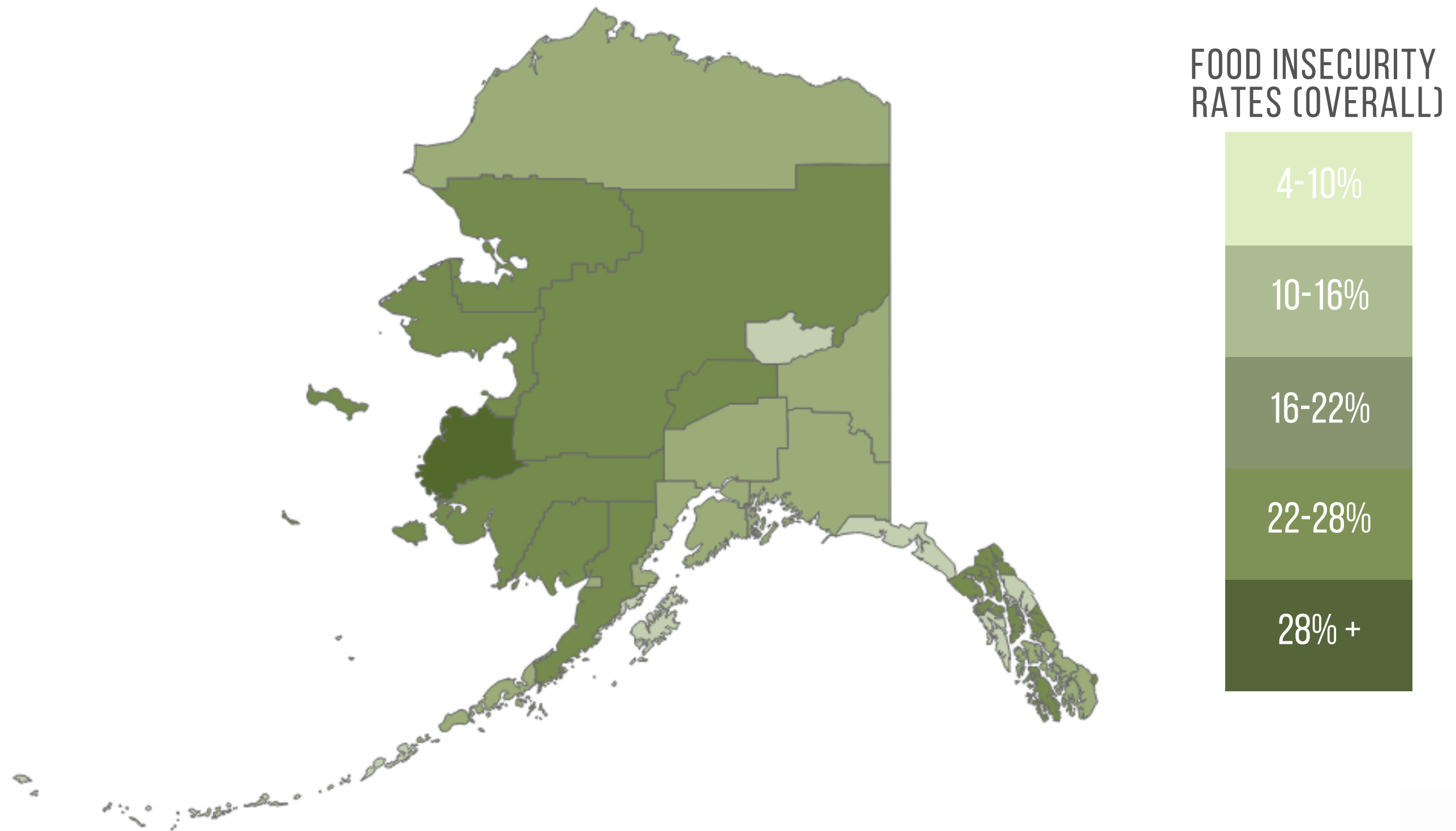
Advocacy and Education

Research

Coalition Building



COVID IMPACT ON HUNGER



FOOD INSECURITY
RATES (OVERALL)

4-10%

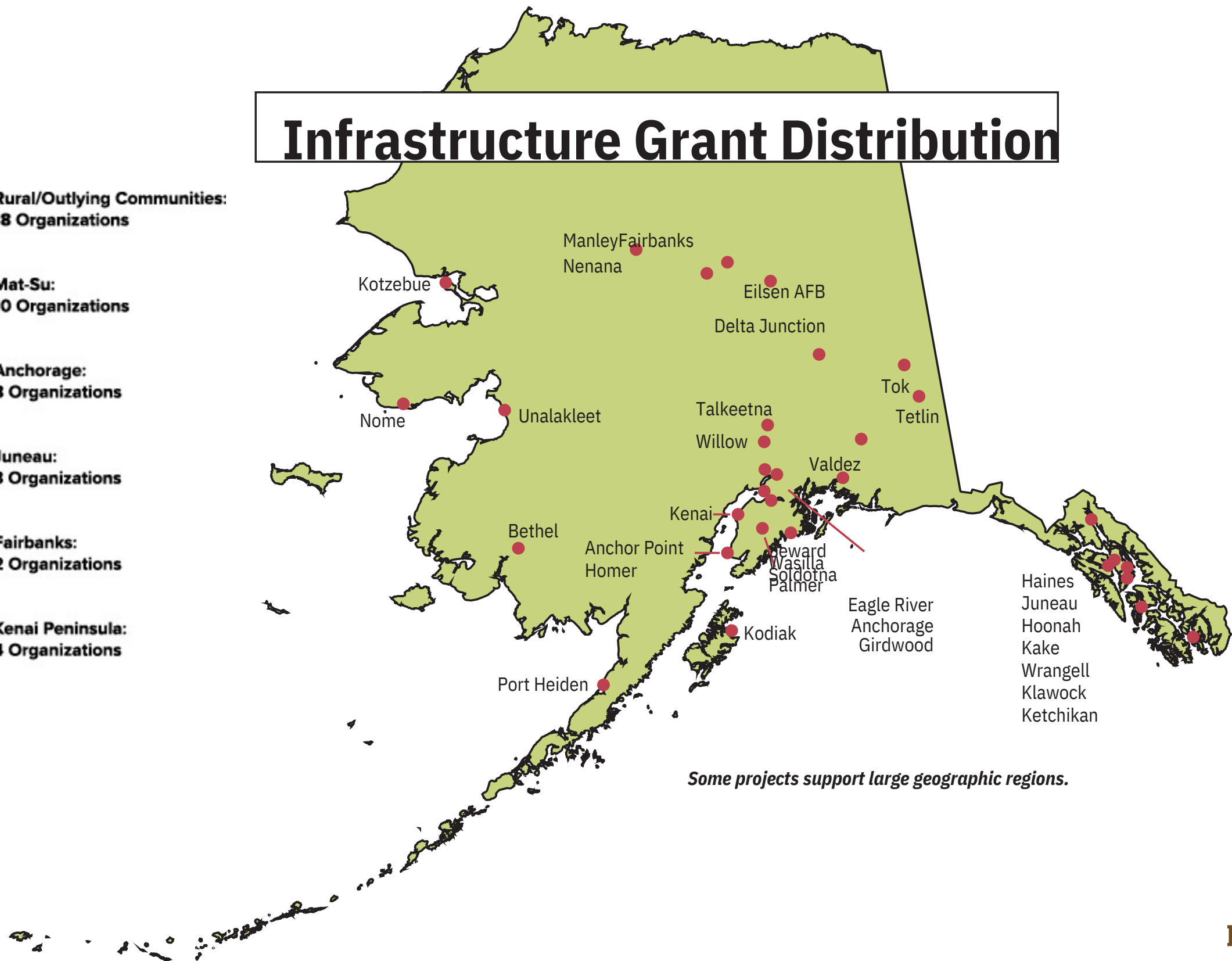
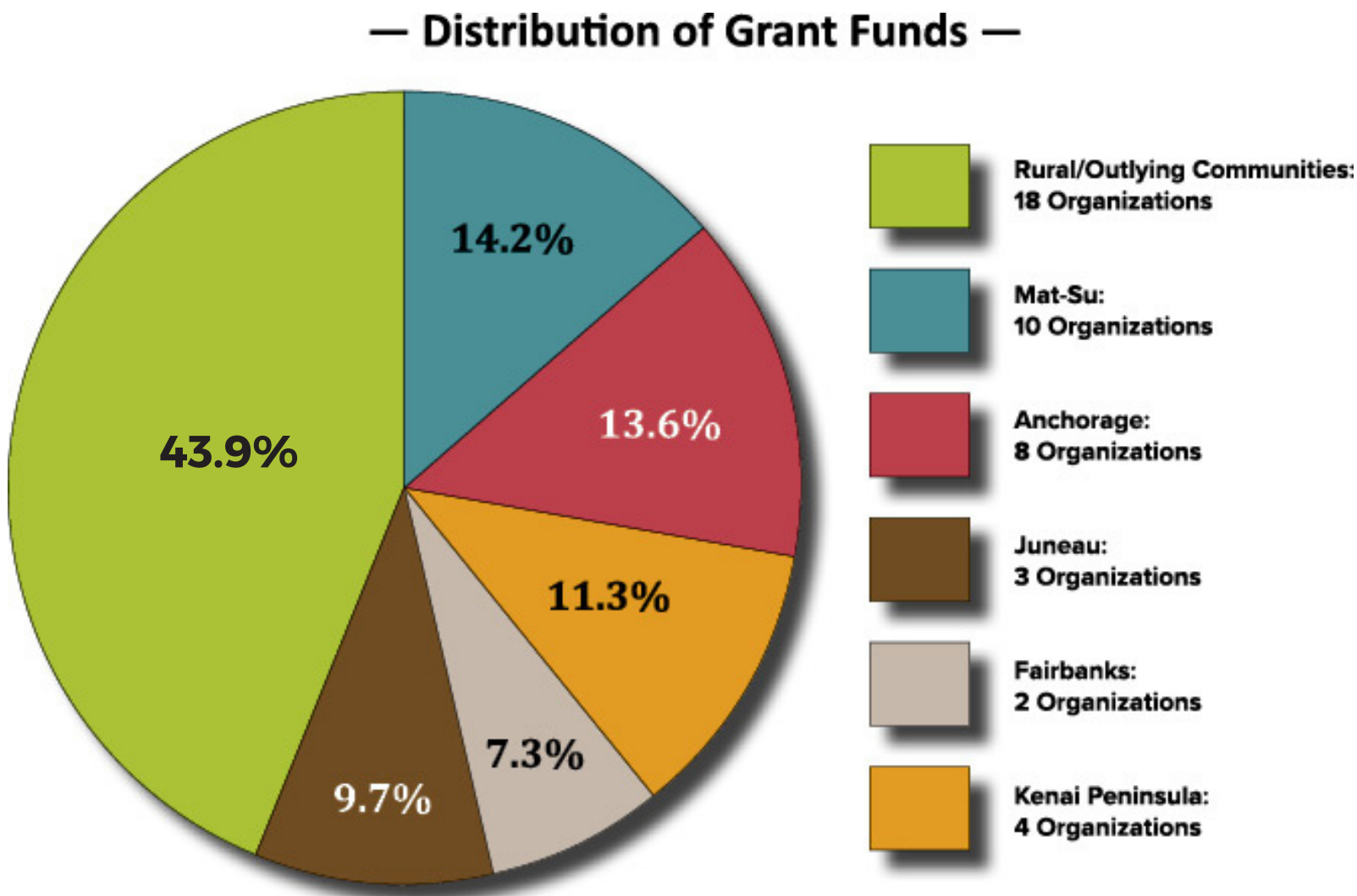
10-16%

16-22%

22-28%

28% +

THANK YOU: FOOD BANK/FOOD PANTRY INFRASTRUCTURE GRANT!



QUOTES FROM GRANT AWARDEES

— “ —
The lasting impact of these funds will benefit our neighbors on the Kenai Peninsula for years to come.

— ” —
-Kenai Peninsula Food Bank

— “ —
This grant is allowing us to reimagine the facility and equipment possibilities for our community and our role in the greater region. It will benefit thousands of people experiencing food insecurity in Bethel and beyond.

— ” —
-Bethel Community Services Foundation

— “ —
We are excited to increase our food sovereignty through the first publicly accessible commercial Kitchen in Hoonah. It's capacity we've never had before.

— ” —
-Hoonah Indian Association

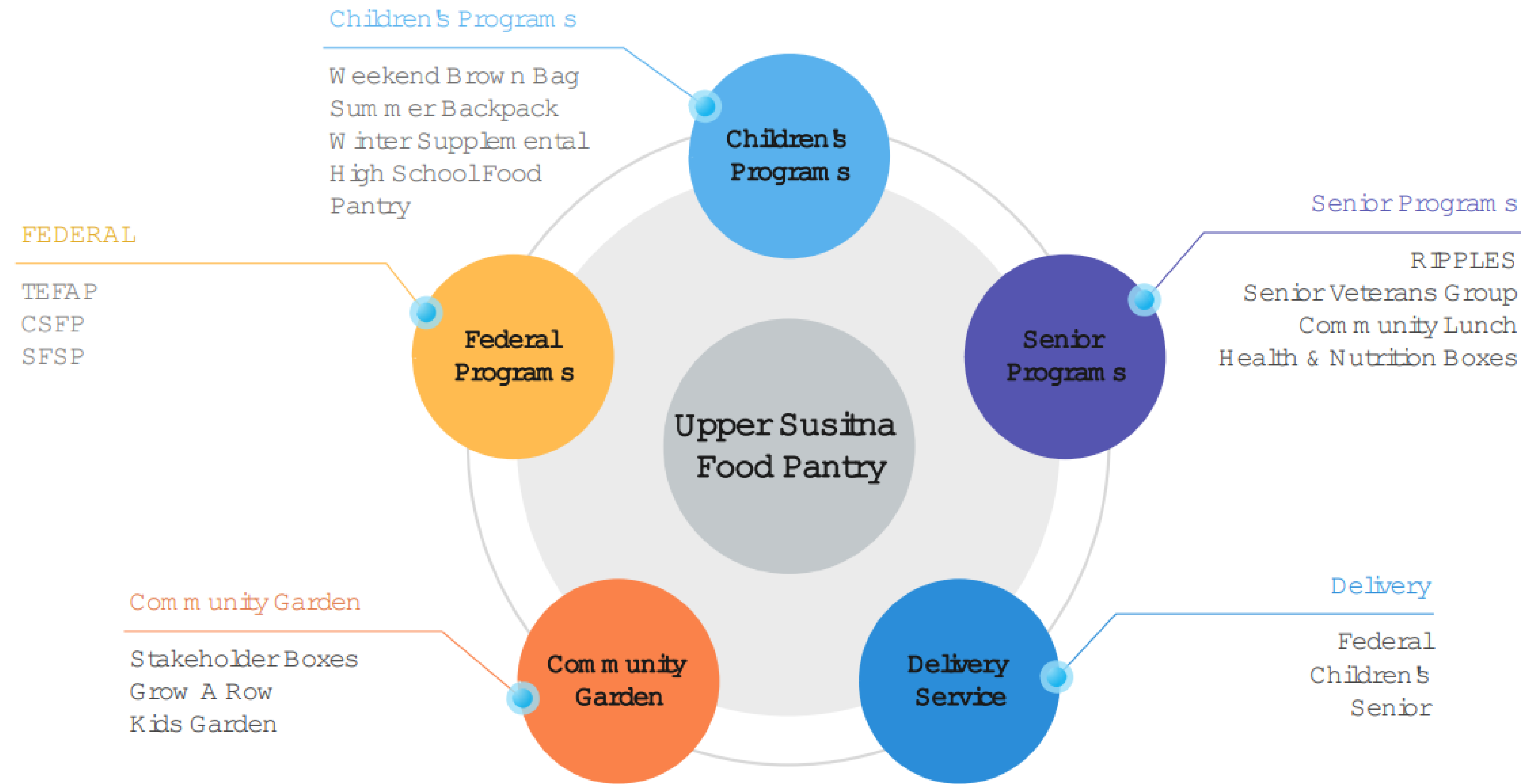
— “ —
We realized during the pandemic that our building was not large enough to handle the increased numbers at the pantry. We are grateful the grant money will allow us to not use all of our savings to complete the addition.

— ” —
-Willow Community Food Pantry

— “ —
We will be able to provide for our community members a bigger variety of foods, a larger supply in case of a supply chain disruption, and an increased ability to share foods we are blessed with from the land.

— ” —
-Native Village of Port Heiden

Upper Susitna Food Pantry

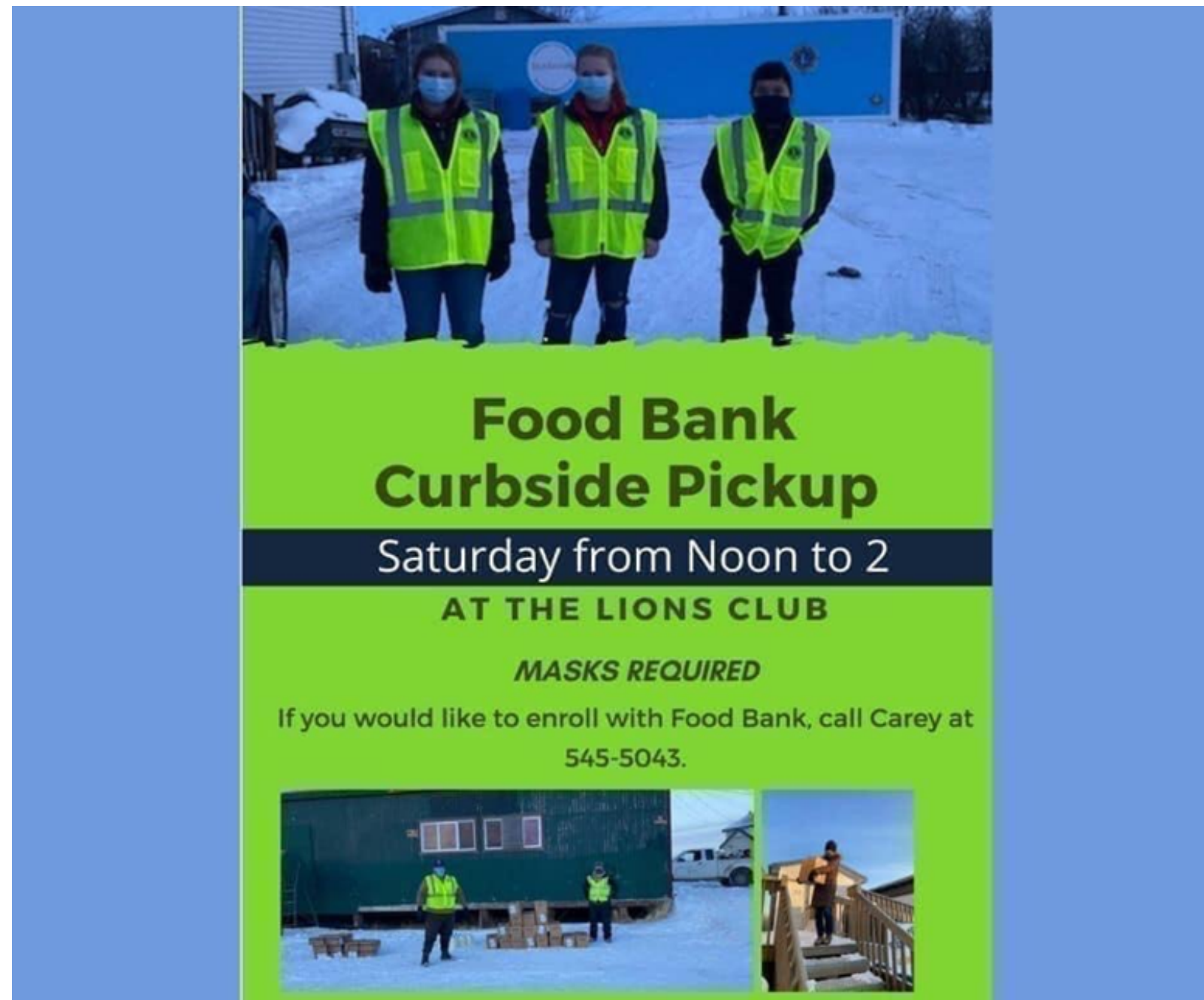


BETHEL COMMUNITY SERVICES FOUNDATION FOOD PANTRY



BETHEL COMMUNITY SERVICES FOUNDATION FOOD PANTRY

- The Bethel Food Pantry has 610 Households representing 2,415 people enrolled. They are currently serving between 200 and 250 of those households each month representing around 1000 individuals.



BETHEL COMMUNITY SERVICES FOUNDATION FOOD PANTRY



LUTHERAN SOCIAL SERVICES

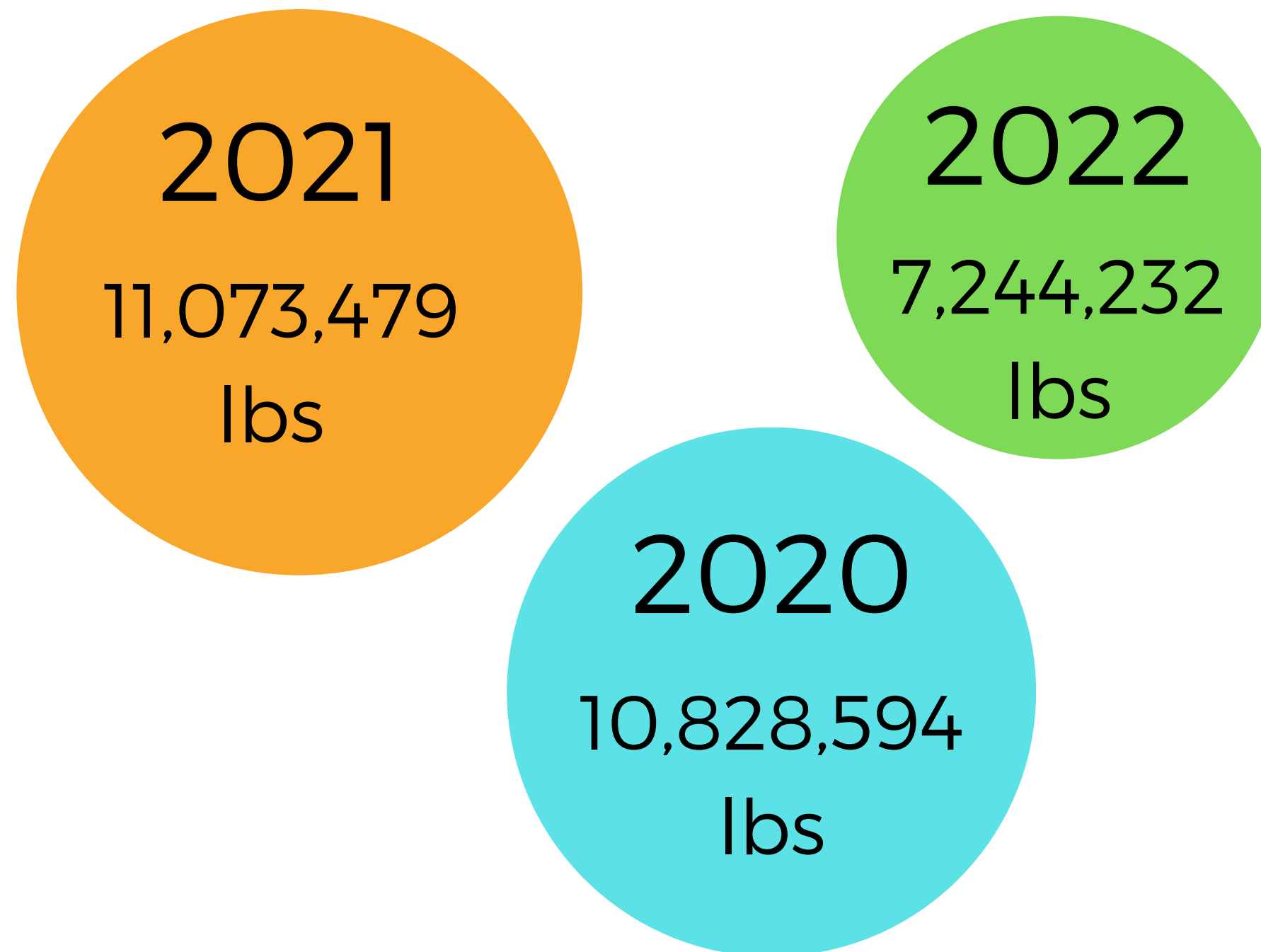
Lutheran Social Services



of Alaska

Pounds of Food Distributed by FBA 2020-2022

- 35% decrease in distributions year over year
- The primary driver is a decrease in food donations, both government and private.
- We have not seen a corresponding decrease in need. In fact, with inflation and SNAP complications, our agency partners are expressing a dramatic increase in need.



Food Bank of Alaska: Programs

Agency Relations & Communications

- Distribution of food to partners statewide
- Developing and maintaining partnerships to strengthen the anti-hunger network in Alaska

Senior Nutrition

- Commodity Supplemental Food Program
- Senior Farmers Market Coupon Program
- Senior targeted grant programs

Child Nutrition

- Summer Food Service Program
- Child and Adult Care Food Program
- Child targeted grant programs

General Food Assistance

- The Emergency Food Assistance Program
- Mobile Food Pantry Program
- Food Distribution Program on Indian Reservations



FEDERAL NUTRITION ASSISTANCE PROGRAMS HELP PUT FOOD ON ALASKANS' TABLES



QUESTIONS?



FOOD ACCESS FOR ALL ALASKANS