



To access a digital version of the FAST Planning 2022 Bikeways Map, scan the QR code by pointing your smartphone camera at it.

FAIRBANKS, NORTH POLE, & VICINITY

2022

BIKEWAYS

BIKEWAYS

2022

FAIRBANKS, NORTH POLE, & VICINITY



Moving & Improving Fairbanks.

### CYCLING IN FAIRBANKS: 101

**DO**

- ride with the flow of traffic
- ride as far to the right of a lane or shoulder as possible
- use shoulders when possible
- follow all traffic laws in place for motorists
- yield to pedestrians on sidewalks & trails
- use arm/hand signals for turns, location changes, & hazards
- use lights & reflective gear at dawn/dusk that are visible from 500 feet

**DO NOT**

- ride more than 2 abreast
- ride on sidewalks in the business district or where posted
- obstruct pedestrian or vehicular traffic with your parked bicycle
- lock bicycles to fire hydrants, police/fire call boxes, traffic signal poles, poles in bus loading zones, stand poles, or signs within 25 feet of an intersection, or trees under 10 inches in diameter

for \$1 you can register your bike with the City of Fairbanks Police Department. They will notify you if your bike is turned in.

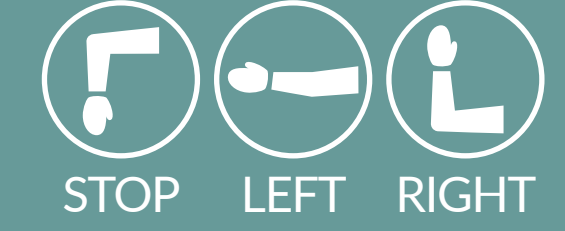
### RIDE & BIKE WITH MACS TRANSIT

Metropolitan Area Commuter System (MACS)  
Buses can transport two bicycles with up to 2.25 inch tires at any time on the front mounted racks. Racks are available on a first come, first served basis.

- ALERT THE BUS DRIVER  
let them know you're using the bike rack
- LOWER THE BIKE RACK  
pull up on the center handle of the rack
- LIFT & PLACE BIKE ONTO THE BIKE RACK'S WHEEL SLOTS  
place the rack support arm on the front tire of your bike to secure it
- BOARD THE BUS  
& pay your fare (there are no bike fees)
- ALERT THE BUS DRIVER  
let them know you're getting your bike

### COMMUNICATE

use arm signals to let others know where you are going.

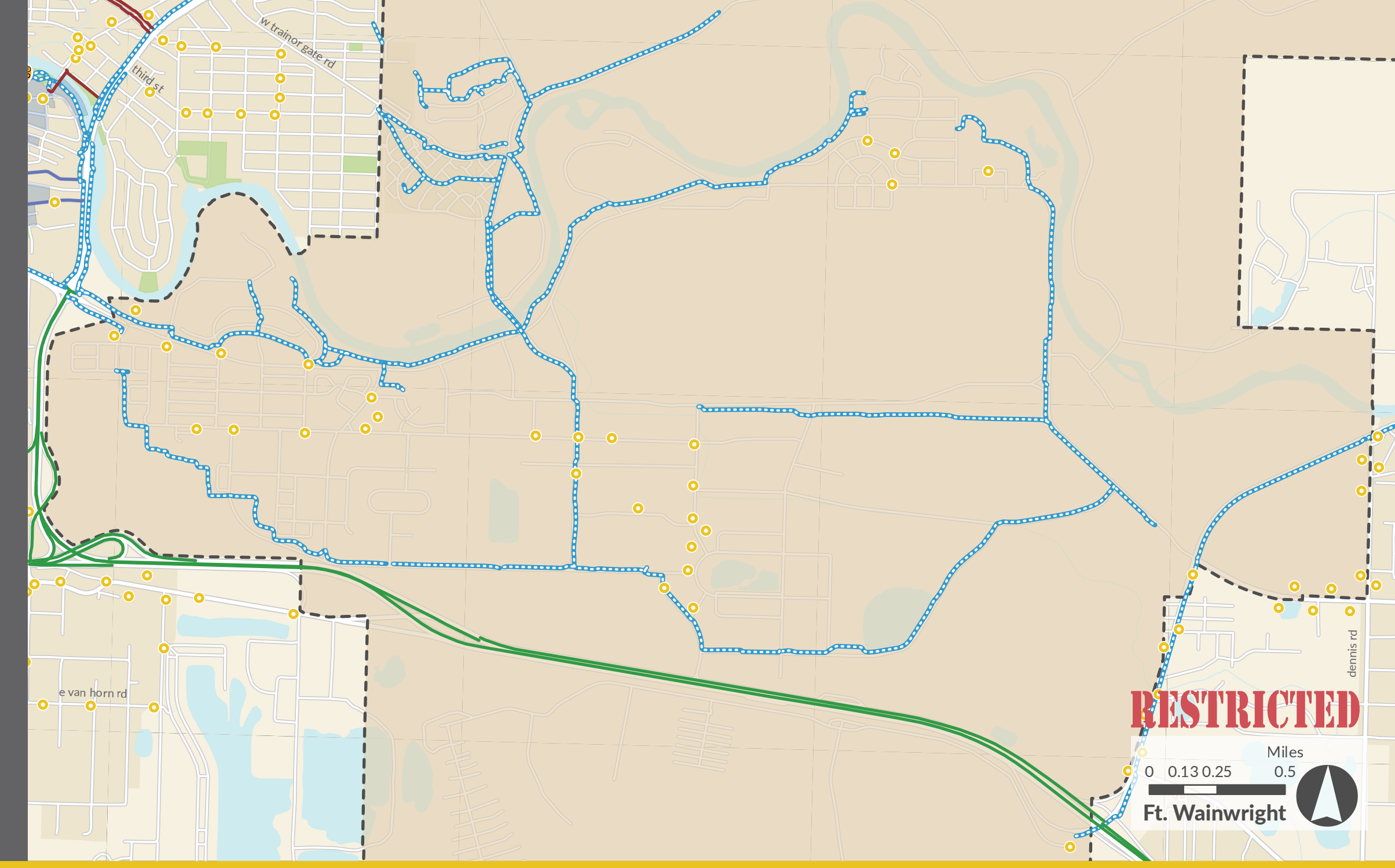
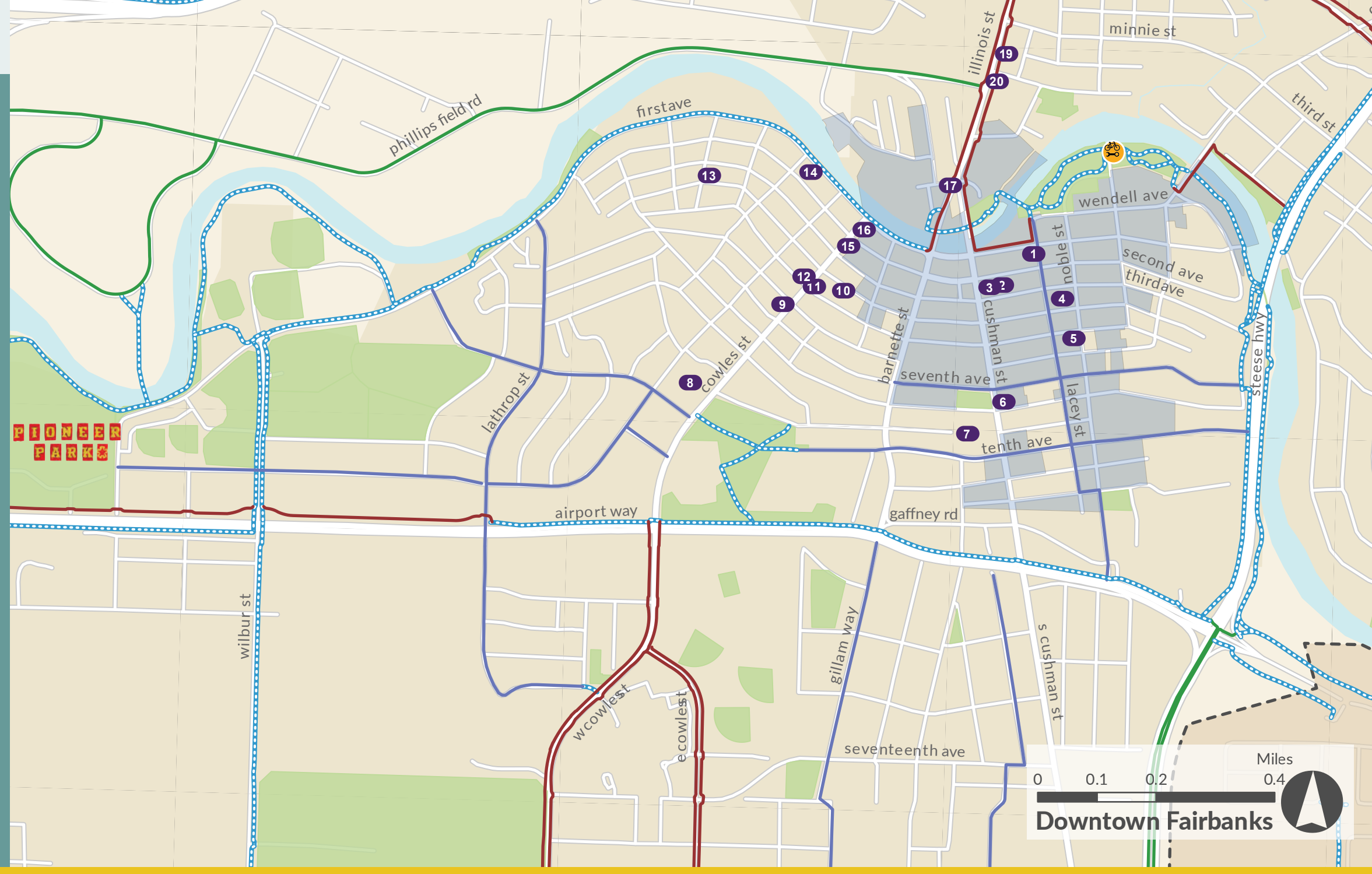
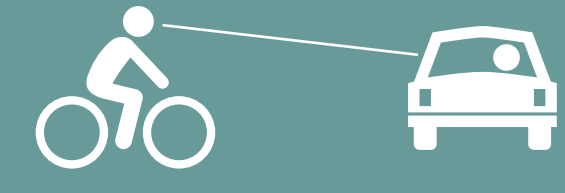


signal all of your turns & stops ahead of time.

SEE. BE SEEN. BE HEARD.

if visibility is poor, highlight your presence by adding lights to the front & back of your bicycle, wearing reflective clothing, & ringing a bell to notify others.

make eye contact with motorists on the road.



### BE A STREET-SMART CYCLIST



ALWAYS WEAR A HELMET to reduce the risk of permanent head injury or death from a crash.

DOES YOUR HELMET FIT PROPERLY?  
do the eyes, ears, mouth test.

- when you look up, you should see the front rim of your helmet
- the helmet side straps should come to a "V" just below each ear
- when you open your mouth wide, you should feel pressure from the helmet on your head

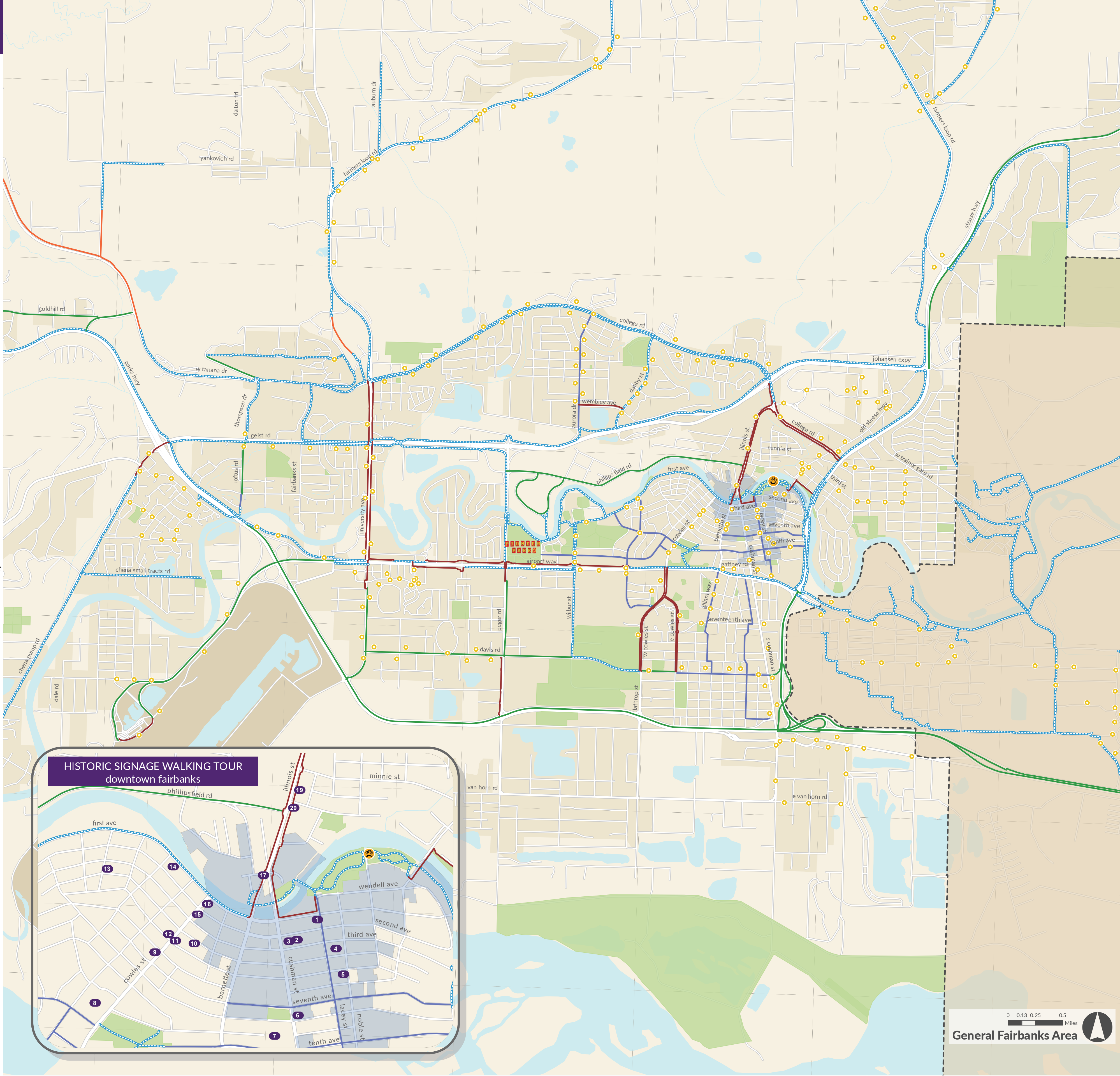
wear bright colors  
use lights, reflectors, a bell, & a mirror to see, be seen, & be heard.



# HISTORIC SIGNAGE WALKING TOUR

## LEGEND

- 1** **Lacey Street Theater**  
504 2nd Avenue  
art deco, built in 1939
- 2** **The Gilcher Building**  
523 2nd Avenue  
sheet metal shop, built in 1907
- 3** **The Empress Theater**  
535 2nd Avenue  
opened 1921, 670 seats
- 4** **The Northward Building**  
455 3rd Avenue  
one of the tallest in town, 1952
- 5** **Craft Market Building**  
401 5th Avenue  
historic craft market, downtown
- 6** **First Presbyterian Church**  
547 7th Avenue  
one of the first, built in 1966
- 7** **Old Main School/City Hall**  
800 Cushman Street  
only public school until 1951
- 8** **Arctic Bowl/Pan Am Hanger**  
952 10th Avenue  
baseball, to airplanes, to bowling
- 9** **The Patty House**  
909 6th Avenue  
1937 renovation on a 1907 cabin
- 10** **The Ski House**  
833 4th Avenue  
classic styling of a fairbanks ski fence
- 11** **Falcon Joslin House**  
413 Cowles Street  
built 1905, oldest frame house
- 12** **Mary Lee Davis/Alaska Heritage House**  
410 Cowles Street  
nat'l register of historic places, 1910
- 13** **Little Sisters' House**  
1235 3rd Avenue  
tudor revival style home, built 1935
- 14** **The Episcopal Church: St. Matthews**  
1030 2nd Avenue  
log church built 1905, burned 1947
- 15** **Pioneer Cabin**  
827 2nd Avenue  
single-family home, built 1926
- 16** **Bath House/Rebekah Lodge**  
825 1st Avenue  
bathhouse then oddfellows club, 1907
- 17** **Big I/NC Warehouses**  
122 N Turner Street  
started as a hotel in 1920, popular pub
- 18** **F.E. Co. Manager's House**  
757 Illinois Street  
nat'l register of historic places, 1935
- 19** **Mapleton-Sexton House**  
315 Illinois Street  
F.E. Co. engineer's house, built 1935
- 20** **Kelly Tire**  
269 Illinois Street  
opened for business in 1950
- 21** **KJNP**  
2501 Mission Road, North Pole  
log construction radio station, 1967
- 22** **North Pole Grange Hall**  
2800 Grange Road, North Pole  
non-profit organization, 1967



- shared-use path**  
paved paths that are separated from the road & marked for non-motorized use by pedestrians, bicyclists, skaters, & roller-skiers.
- bike route**  
lower speed streets open to both bicycle and vehicle travel that are identified as routes suitable for bicycle use; typically marked with bicycle guide signs.
- sidewalk connector**  
raised, improved facilities that are 8 feet wide or less on which bicyclists must yield the right-of-way. city code restricts bicycle use on sidewalks within the central business district.
- shoulders**  
typically marked with bicycle guide signs, road shoulders designated as "bikeways" are paved & have a minimum width of 4-feet. ride as far to the right as possible.

**unpaved facility**  
recreational, shared-use trails; typically gravel also found in the various frnsb parks designated on the map. get more info at [www.fairbanksak.myrec.com](http://www.fairbanksak.myrec.com)

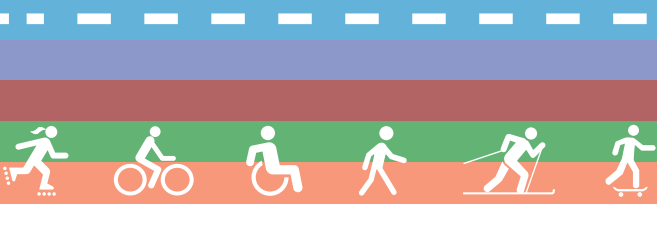
**bicycle maintenance station**  
flat tire? loose chain?  
take care of it here at the morris thompson cultural center!

**fort wainwright military base**  
the following rules apply: military ID or visitor's pass required at the gate and when bicycling, a helmet is required at all times, you must ride with traffic, & you must wear reflective clothing after dusk.

**bus stop**  
MACS transit bus stops that service 8 different routes throughout the area. plan your trip using GoogleMaps or track the bus you're expecting using [www.fnsb.routematch.com](http://www.fnsb.routematch.com).

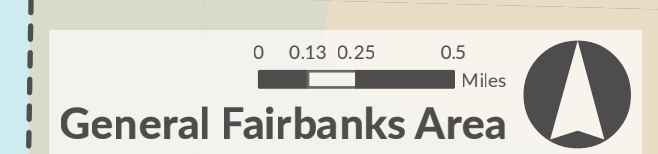
**park**  
over 20 maintained areas throughout the area that offer recreational biking, walking, & other activities per season, such as skiing, visit [www.fairbanksak.myrec.com](http://www.fairbanksak.myrec.com) for facility info.

**central business district**  
this area is one that is higher in retail, office, restaurant, and personal services & therefore has higher vehicle & pedestrian activity. city code does not permit bicycle use on the sidewalks.



**Is your business bike friendly?**  
Do you want to be represented on the next Bikeways Map?  
contact us for details about getting your logo on the map email [olivia.lunsford@fastplanning.us](mailto:olivia.lunsford@fastplanning.us)

check out our non-motorized transportation plan online at [www.fastplanning.us/docs/plans](http://www.fastplanning.us/docs/plans)



No warranty is made or intended as to the safety or fitness of the highways, roads, streets, sidewalks or paths for bicycle and pedestrian travel. The state, borough, cities, and their officers and employees, disclaim responsibility and shall not be answerable or held accountable in any manner for loss, damage or injury that may be suffered by bicyclists or pedestrians who travel along roadways, separated paths or sidewalks in Alaska.