



THE STATE
of **ALASKA**
GOVERNOR MIKE DUNLEAVY

DEPARTMENT OF COMMERCE, COMMUNITY AND ECONOMIC DEVELOPMENT

ALASKA BROADBAND OFFICE
BROADBAND EQUITY, ACCESS, & DEPLOYMENT

Thomas Lochner
Director

Legislative Budget and Audit Meeting
November 8, 2023



Broadband Equity, Access, and Deployment (BEAD)

ALLOCATED \$42.45 BILLION FOR ALL STATES AND TERRITORIES

Alaska's Allocation: **\$1,017,139,672.42**

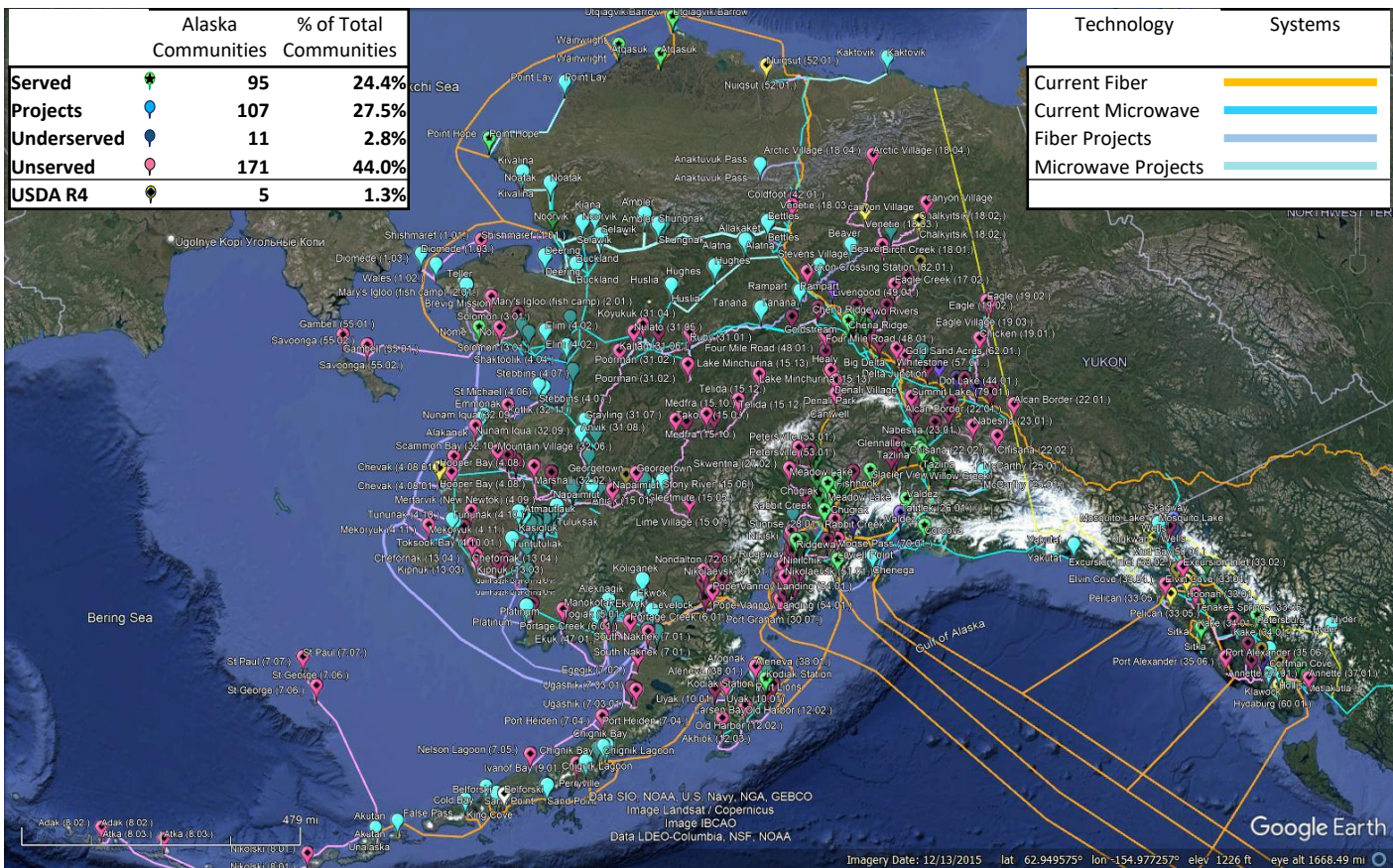
DISBURSEMENTS OF ALASKA'S ALLOCATION

Grants will be based on percentage of locations that are:

- 1st Priority -- Unserved - less than 25Mbps Download/3Mbps Upload
- 2nd Priority -- Underserved - less than 100Mbps/20Mbps and
- 3rd Priority -- Unserved Community Anchor Institutions - less than 1Gbps/1Gbps

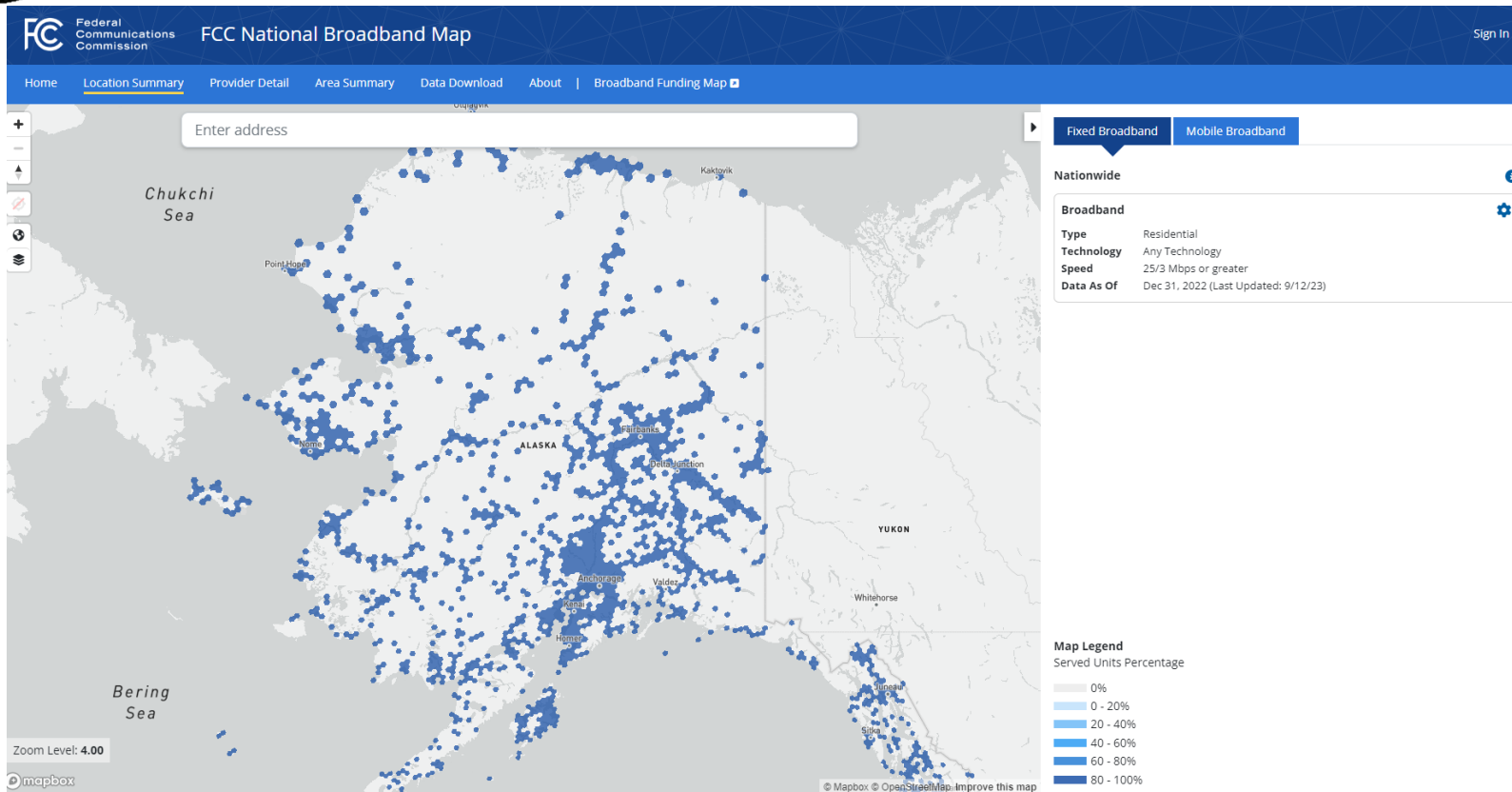


ABO -- Current Status of Broadband



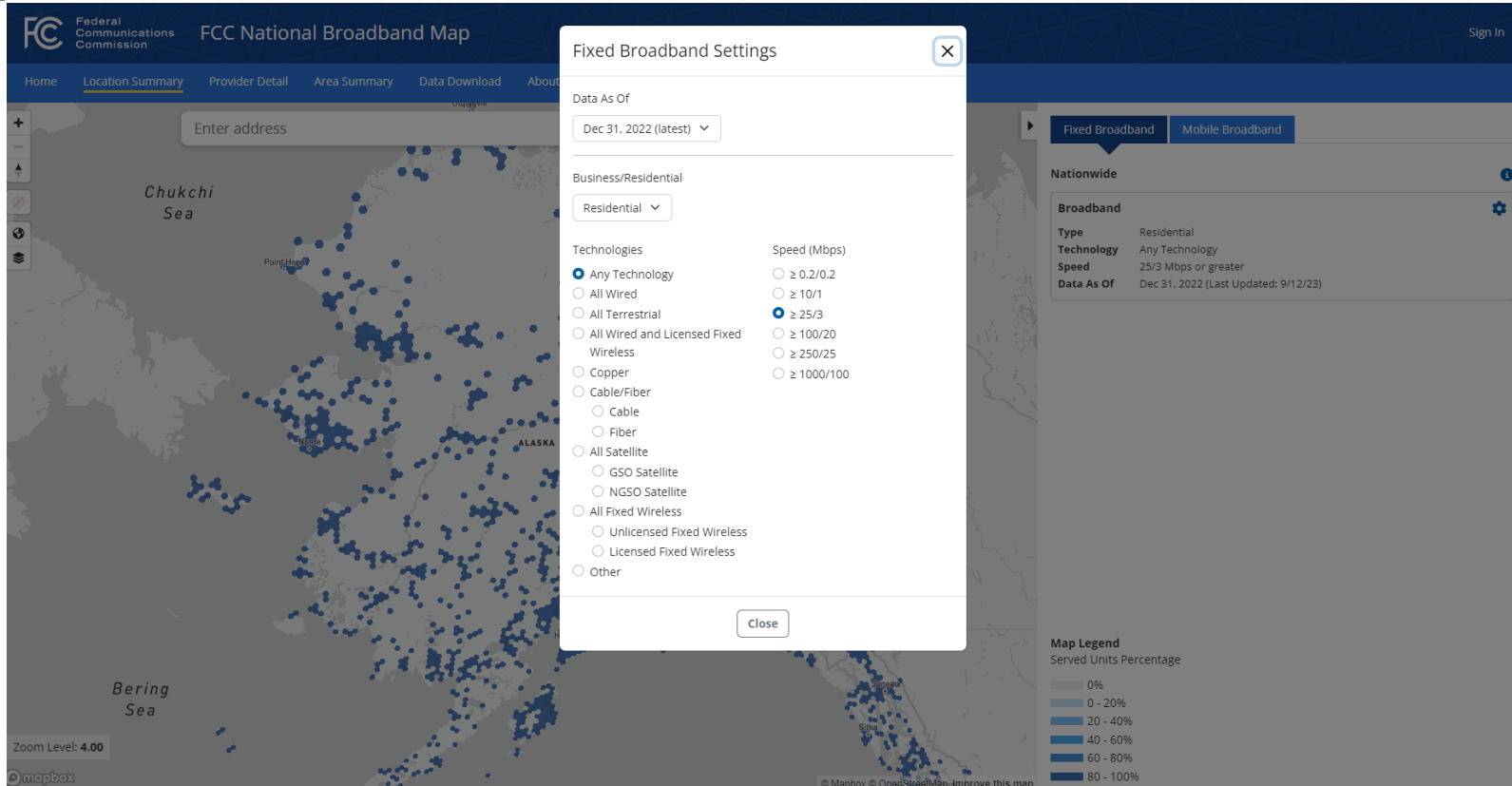


FCC Broadband Map – Using Any Technology





FCC Broadband Map – Using Any Technology





FCC Broadband Map – Wired and Licensed Wireless

FCC National Broadband Map

Home Location Summary Provider Detail Area Summary Data Download About

Enter address

Chukchi Sea

Point Hope

Nome

ALASKA

Bering Sea

Zoom Level: 4.00

mapbox

© Mapbox © OpenStreetMap contributors

Fixed Broadband Settings

Data As Of
Dec 31, 2022 (latest)

Business/Residential
Residential

Technologies

- ☐ Any Technology
- ☐ All Wired
- ☐ All Terrestrial
- ☒ All Wired and Licensed Fixed Wireless
- ☐ Copper
- ☐ Cable/Fiber
 - ☐ Cable
 - ☐ Fiber
- ☐ All Satellite
 - ☐ GSO Satellite
 - ☐ NGSO Satellite
- ☐ All Fixed Wireless
 - ☐ Unlicensed Fixed Wireless
 - ☐ Licensed Fixed Wireless
- ☐ Other

Speed (Mbps)

- ☐ $\geq 0.2/0.2$
- ☐ $\geq 10/1$
- ☒ $\geq 25/3$
- ☐ $\geq 100/20$
- ☐ $\geq 250/25$
- ☐ $\geq 1000/100$

Close

Fixed Broadband Mobile Broadband

Nationwide

Broadband

Type Residential

Technology All Wired and Licensed Fixed Wireless

Speed 25/3 Mbps or greater

Data As Of Dec 31, 2022 (Last Updated: 9/12/23)

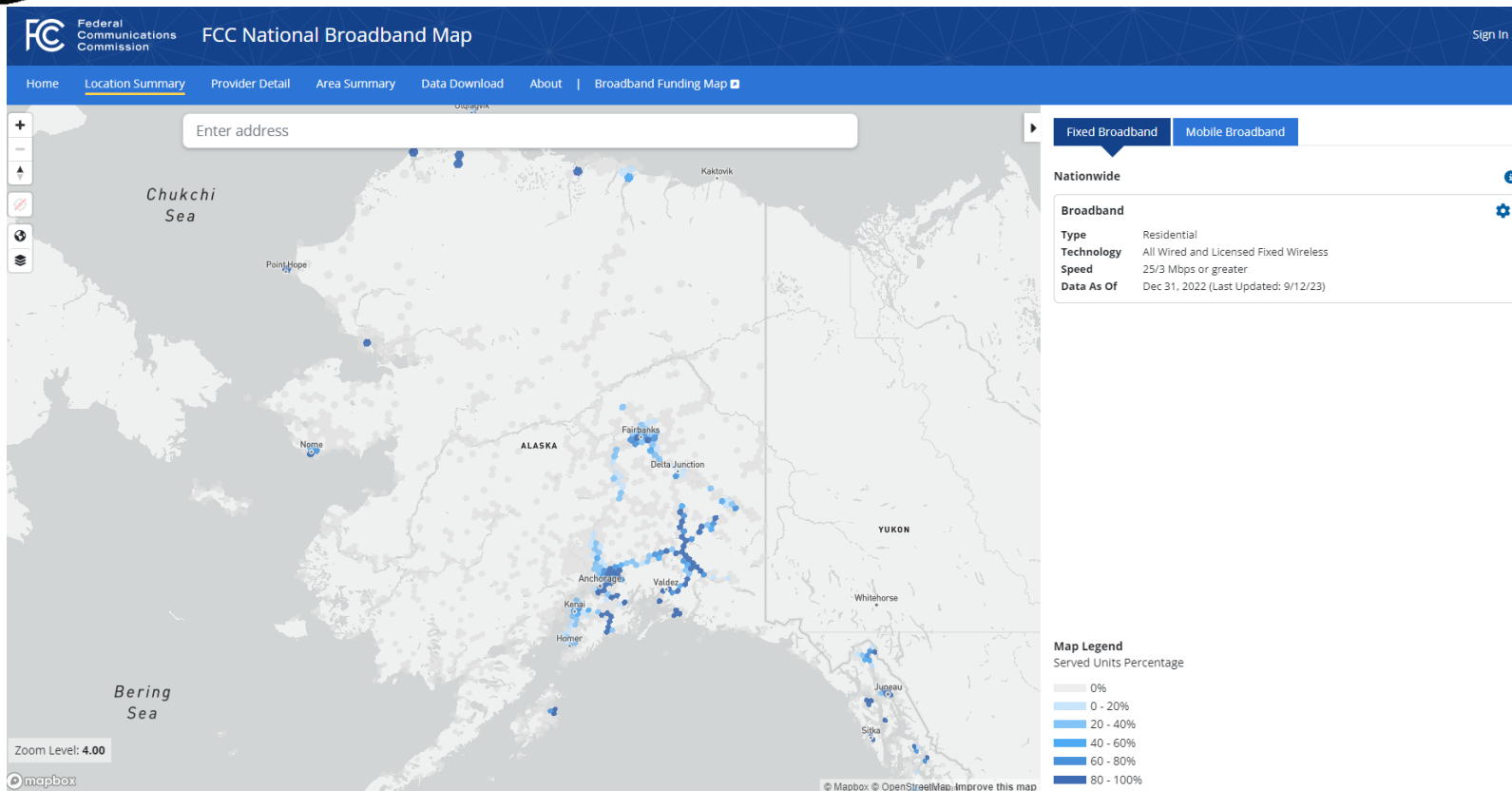
Map Legend

Served Units Percentage

- 0%
- 0 - 20%
- 20 - 40%
- 40 - 60%
- 60 - 80%
- 80 - 100%

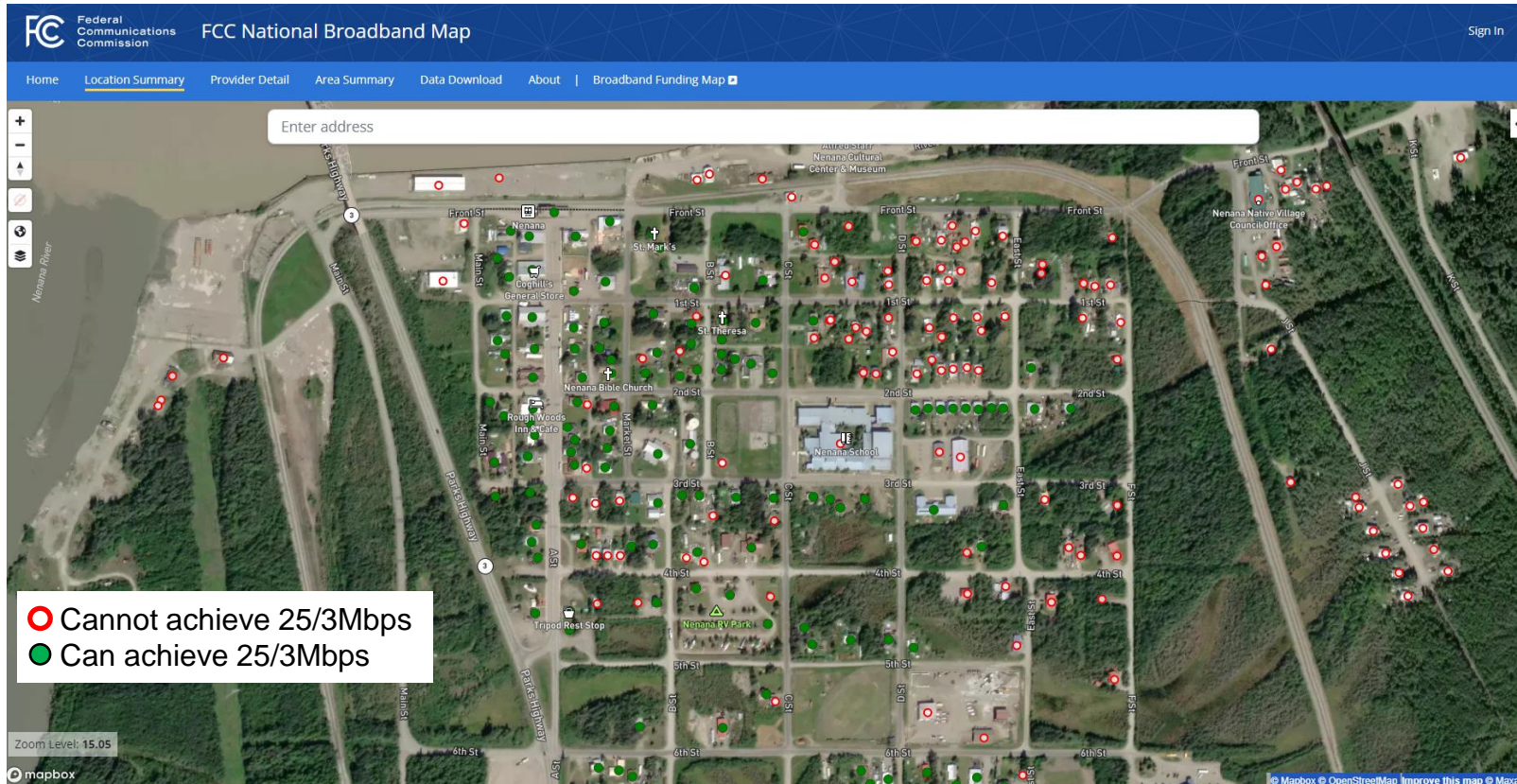


FCC Broadband Map – Alaska Unserved (light grey)



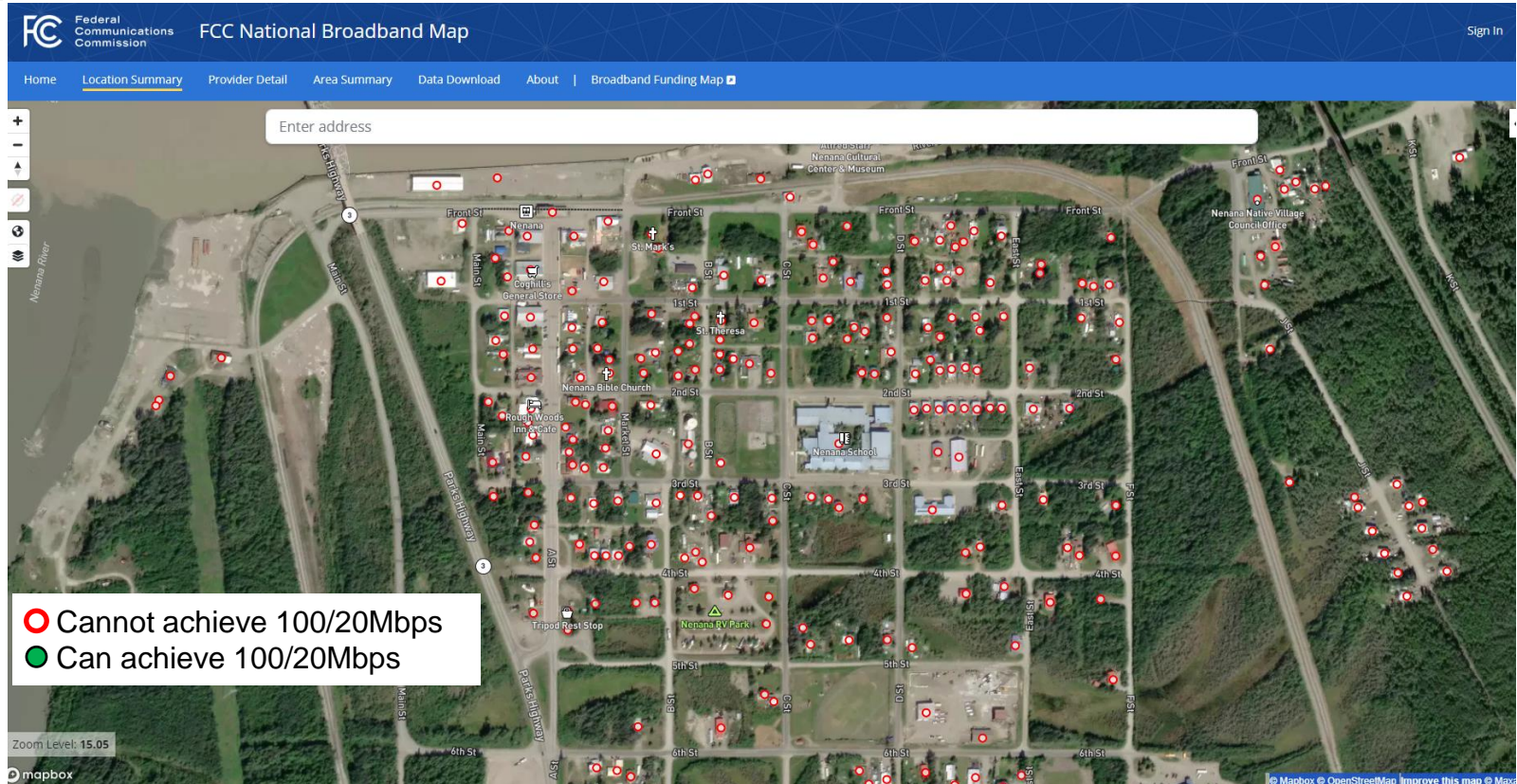


FCC Broadband Map – Zoom in: Nenana 25/3Mbps



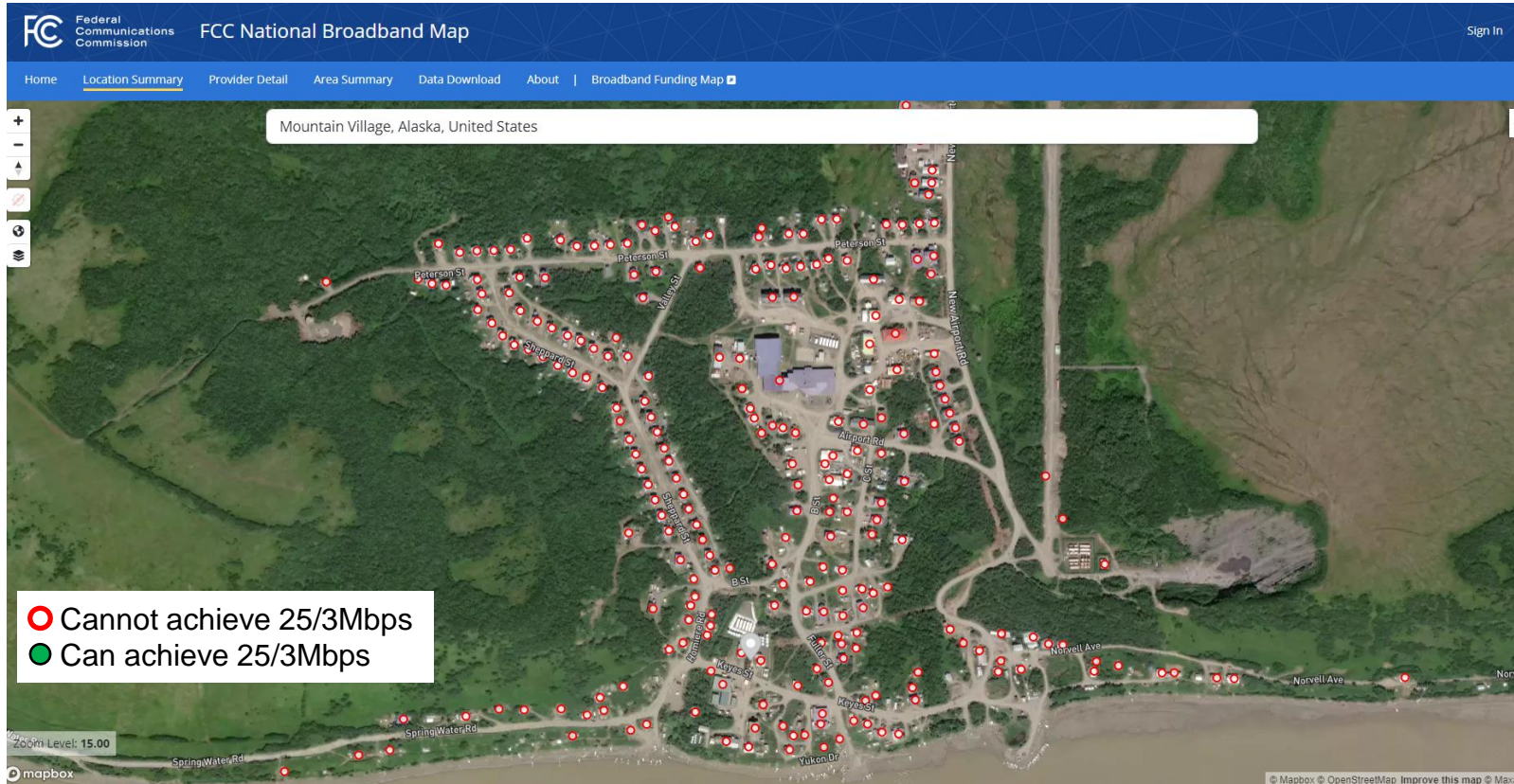


FCC Broadband Map – Zoom in: Nenana 100/20Mbps



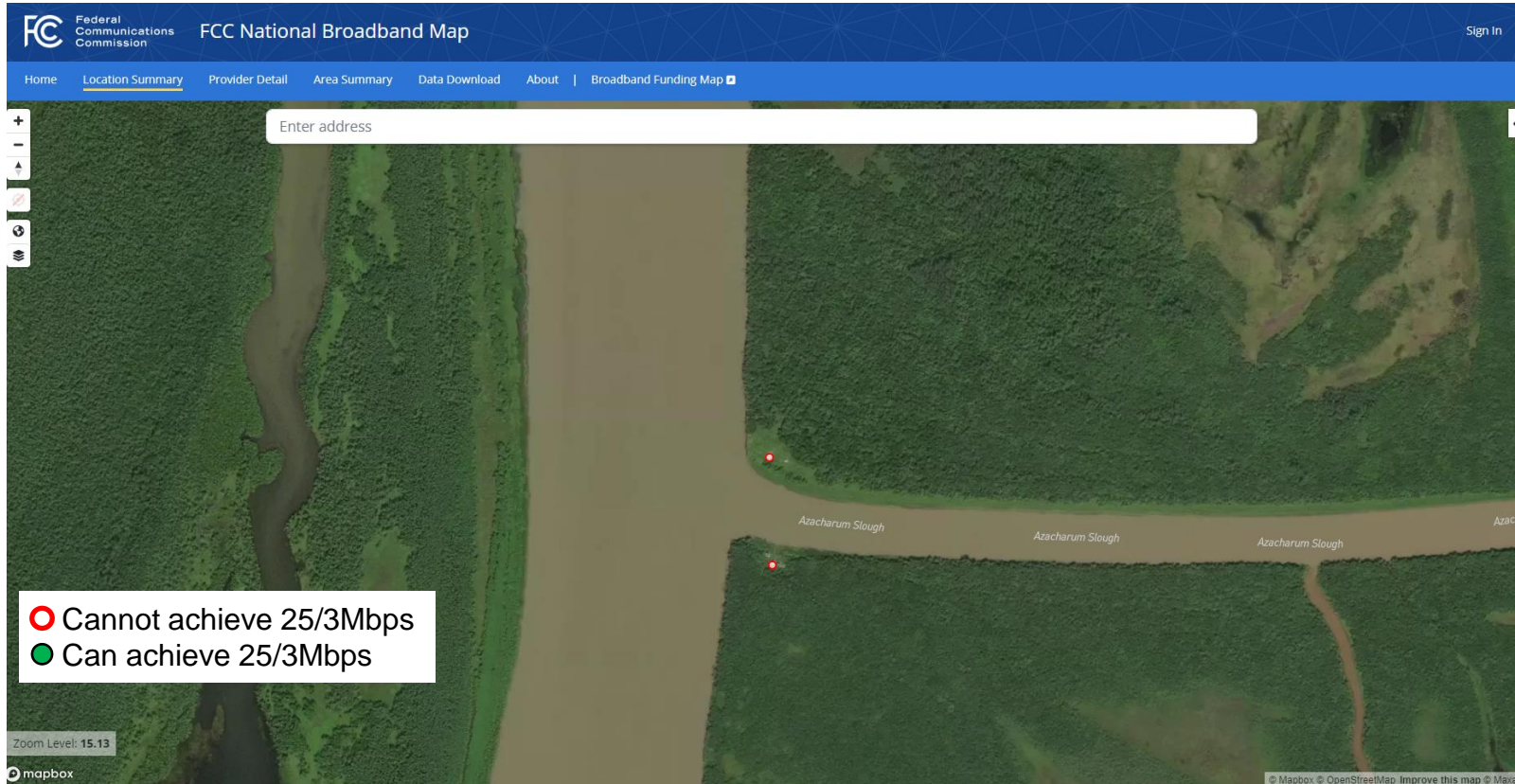


FCC Broadband Map – Zoom in: Mtn Village 25/3Mbps



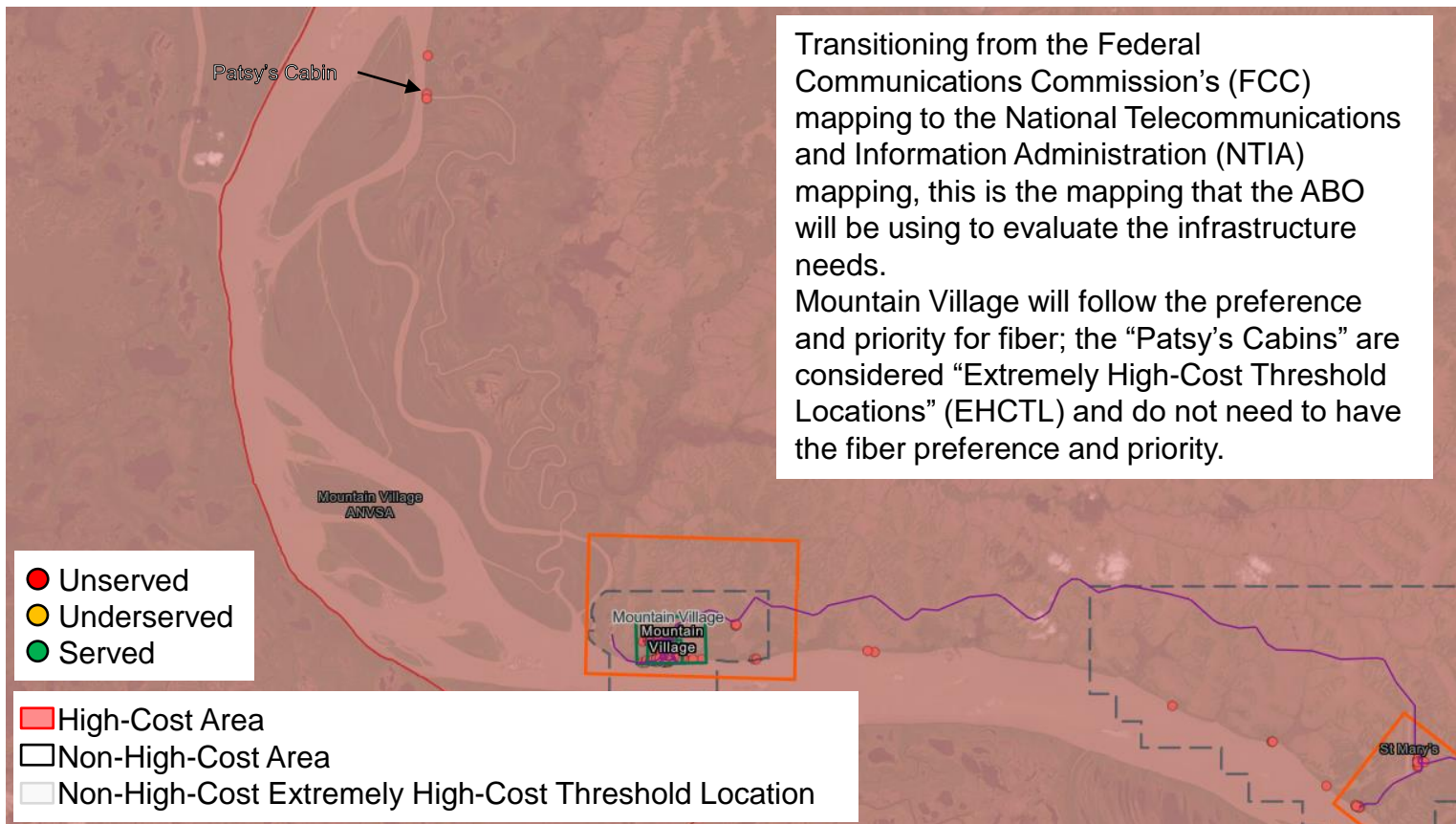


FCC Broadband Map – Zoom in: “Patsy’s Cabin”



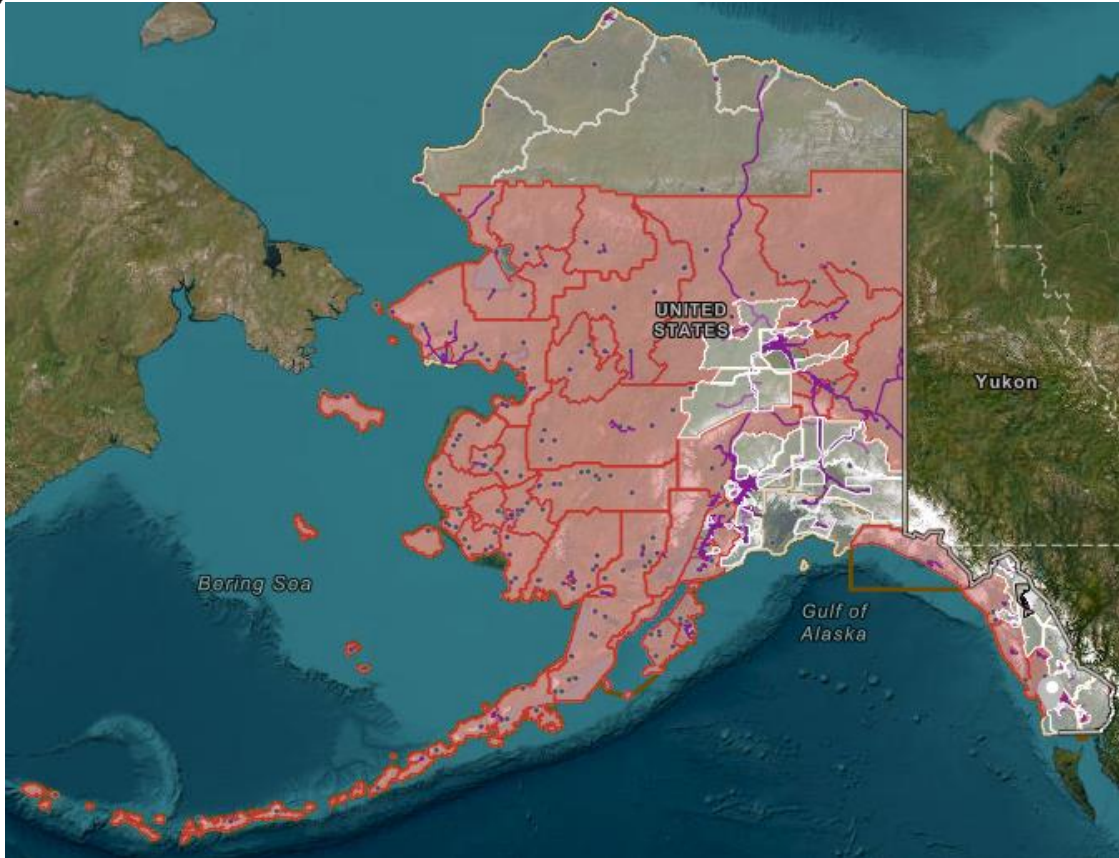


ABO BSL Map – Mountain Village & “Patsy’s Cabin”





ABO BSL MAP – High Cost (red) vs. Non-High Cost

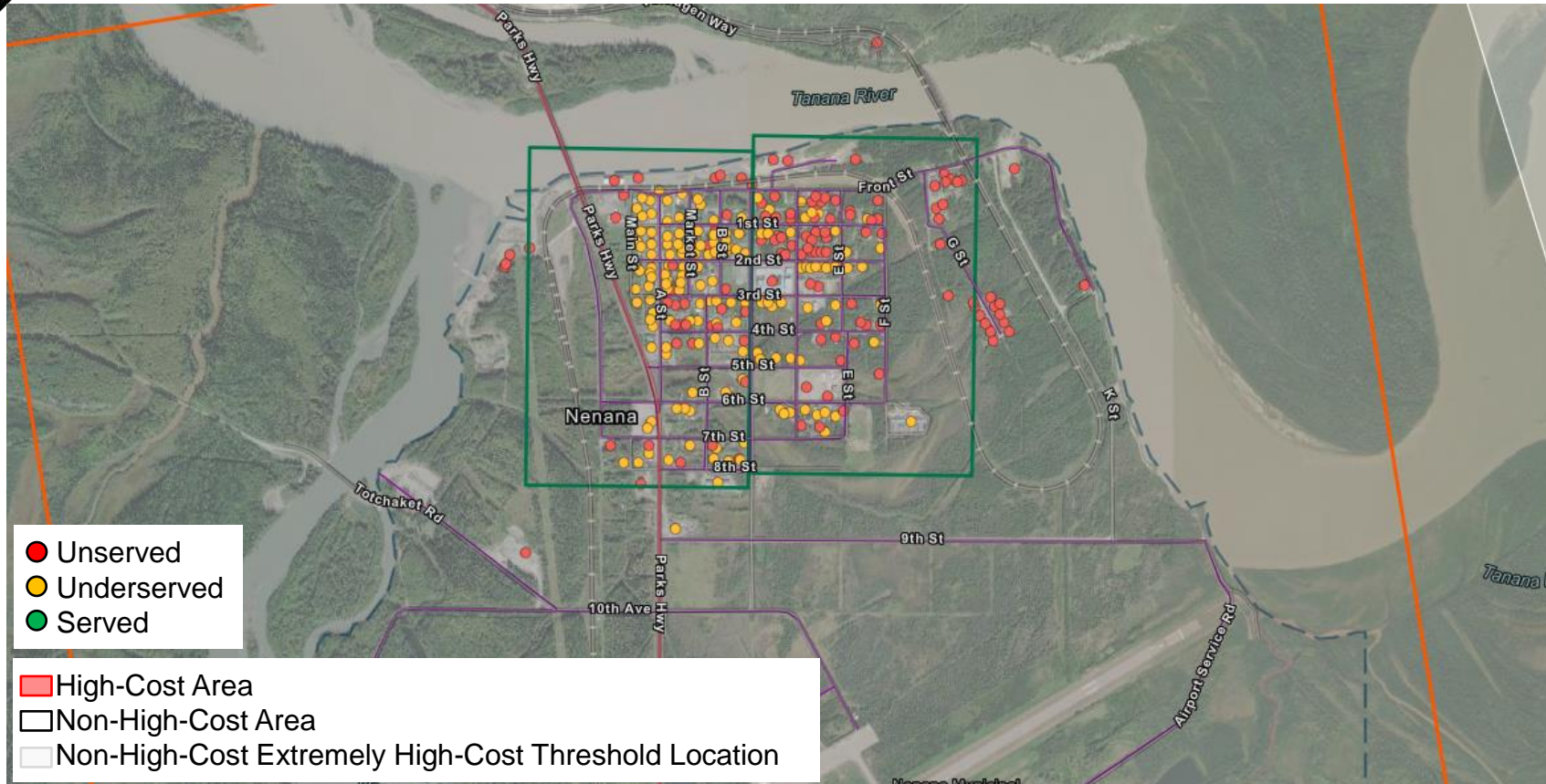


Non-High-Cost Area – A 25% funding match is required. A waiver may be requested.

High-Cost Area (red) – The 25% match requirement is waived without a waiver request.

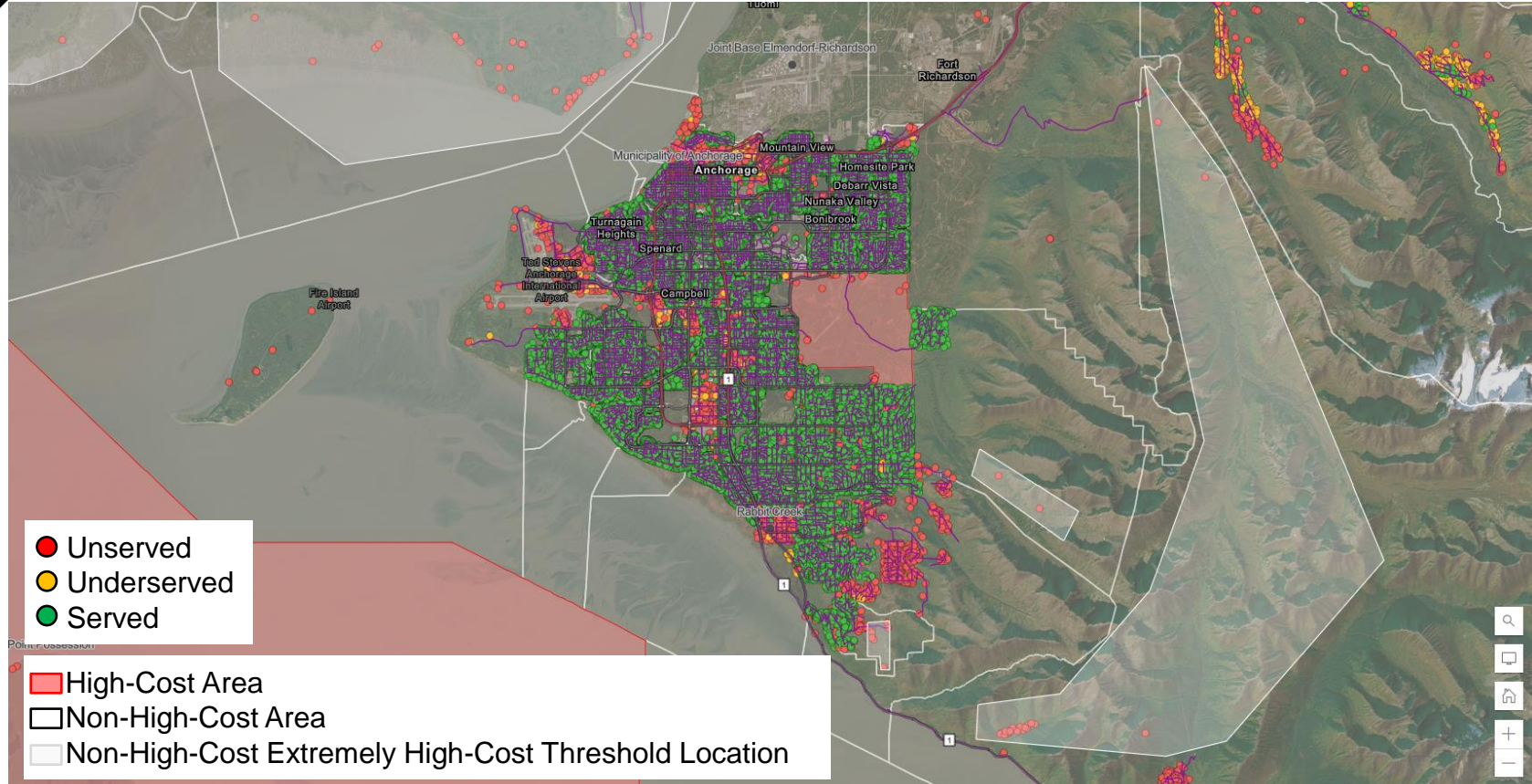


ABO BSL MAP – Nenana



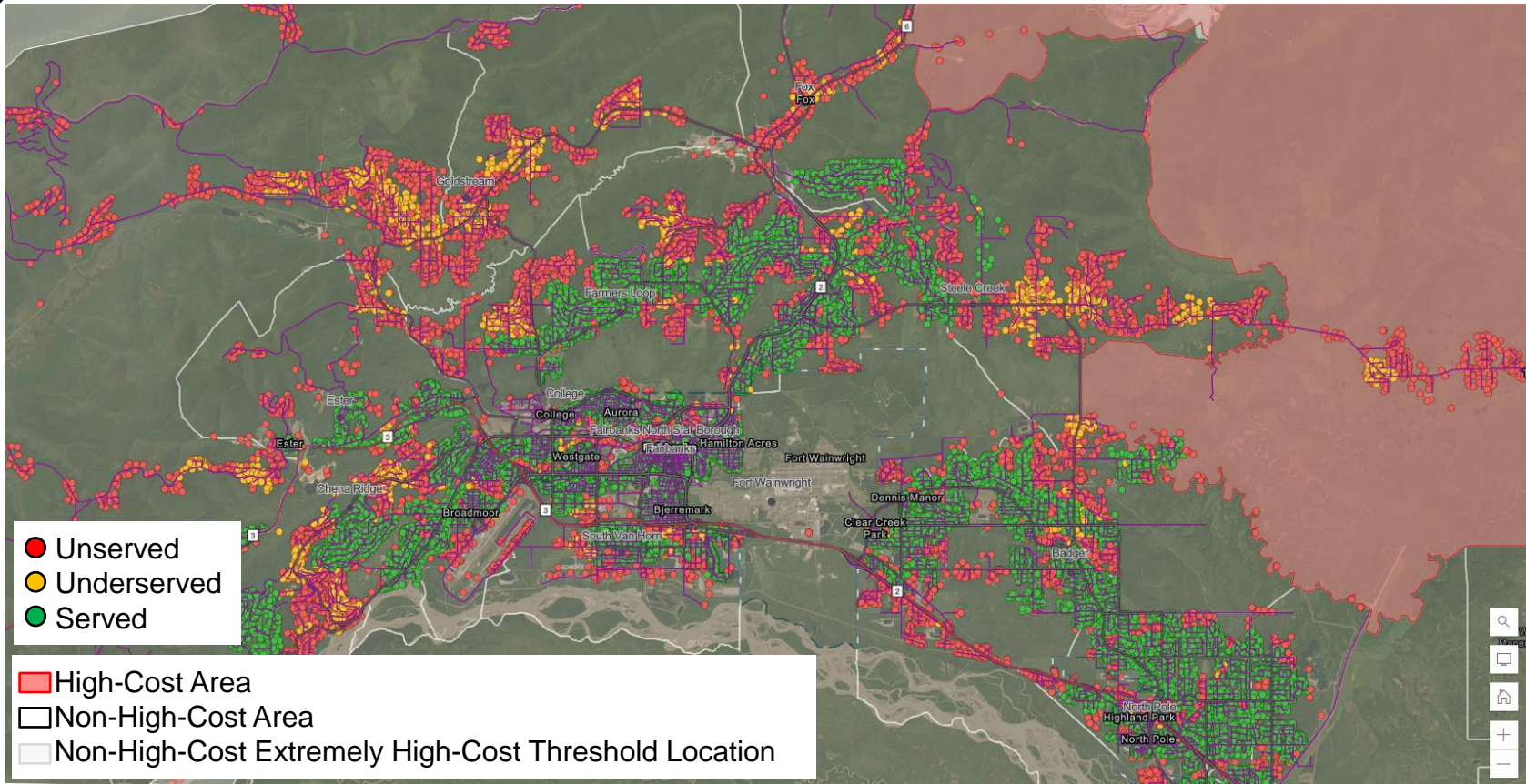


ABO BSL MAP – Anchorage



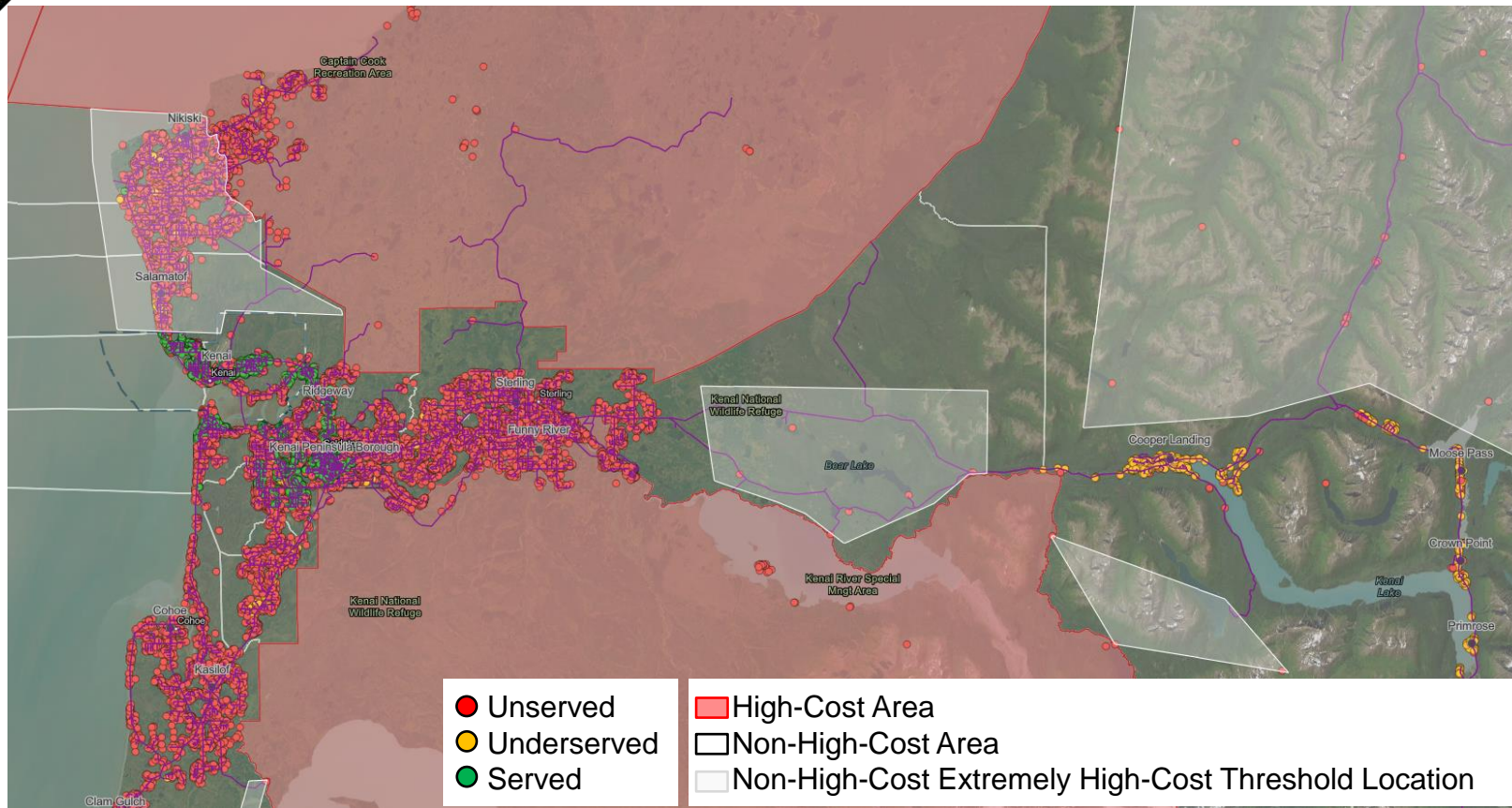


ABO BSL MAP – Fairbanks



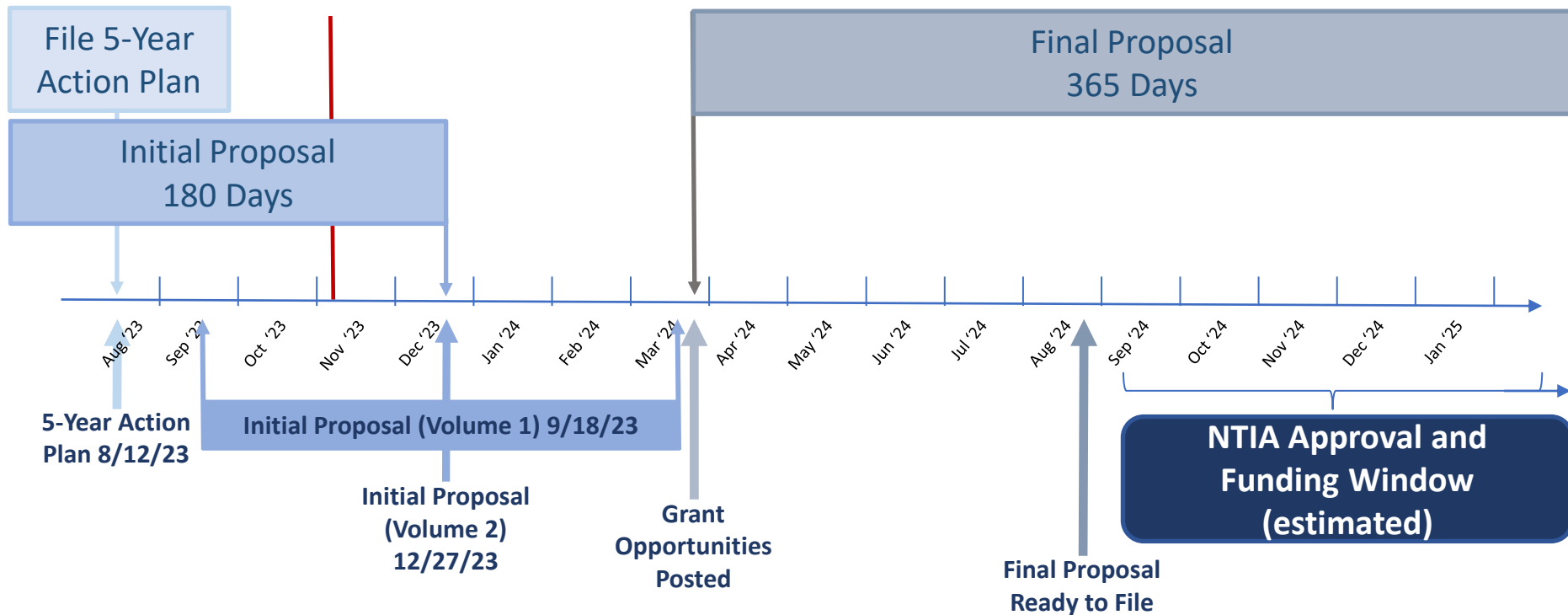


ABO BSL MAP – Upper Kenai Peninsula





BEAD Milestone Dates & ABO Timeline





Questions?

Contact Information:

Thomas Lochner
Director

thomas.lochner@alaska.gov
(907) 269-4048

Lisa Von Bargaen
Deputy Director

lisa.vonbargaen@alaska.gov
(907) 660-7877

Melissa M. Kookesh
Tribal Liaison

melissa.kookesh@alaska.gov
(907) 465-6466

Thank You!