

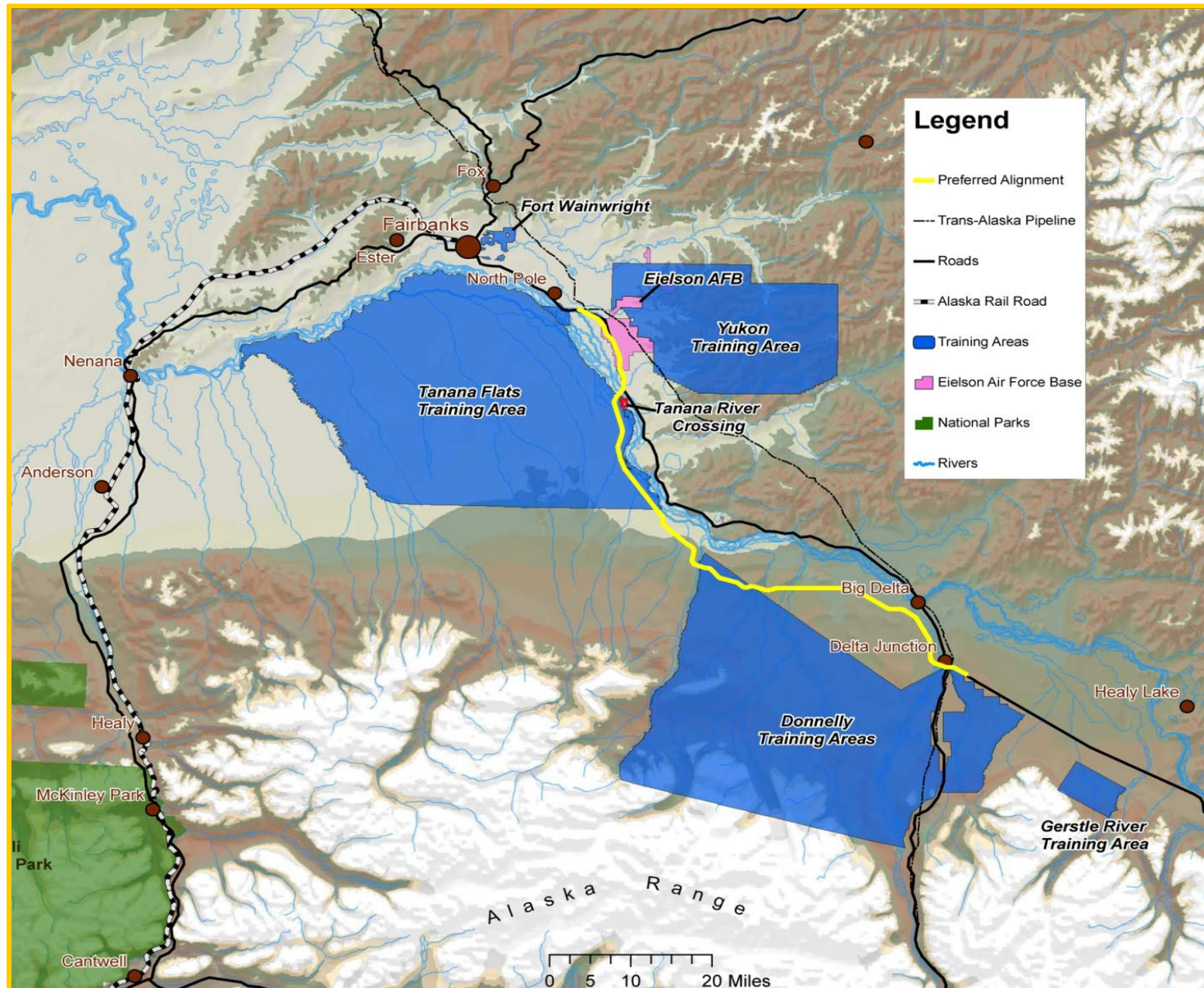


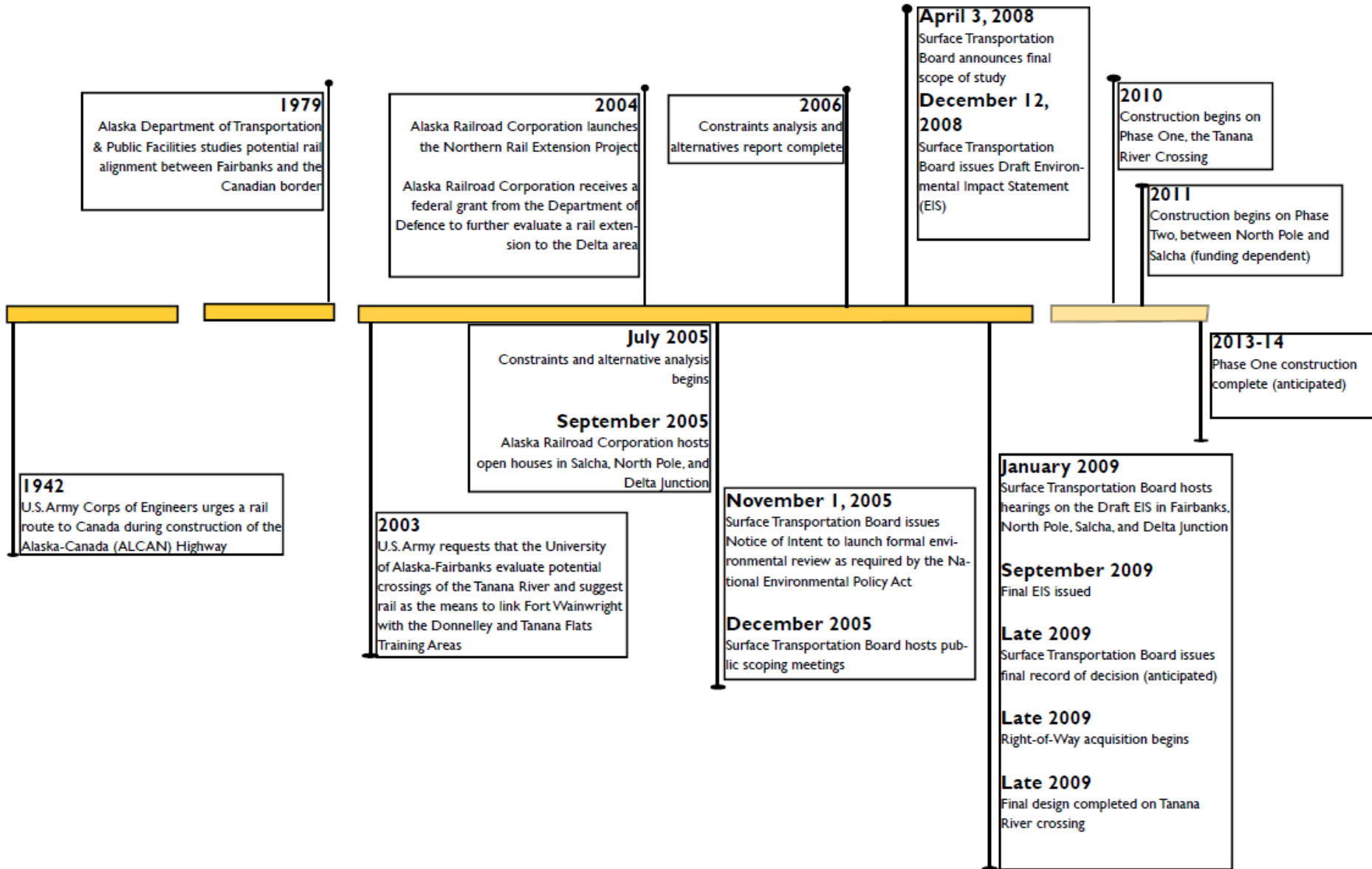
Northern Rail Extension Status



May 2022

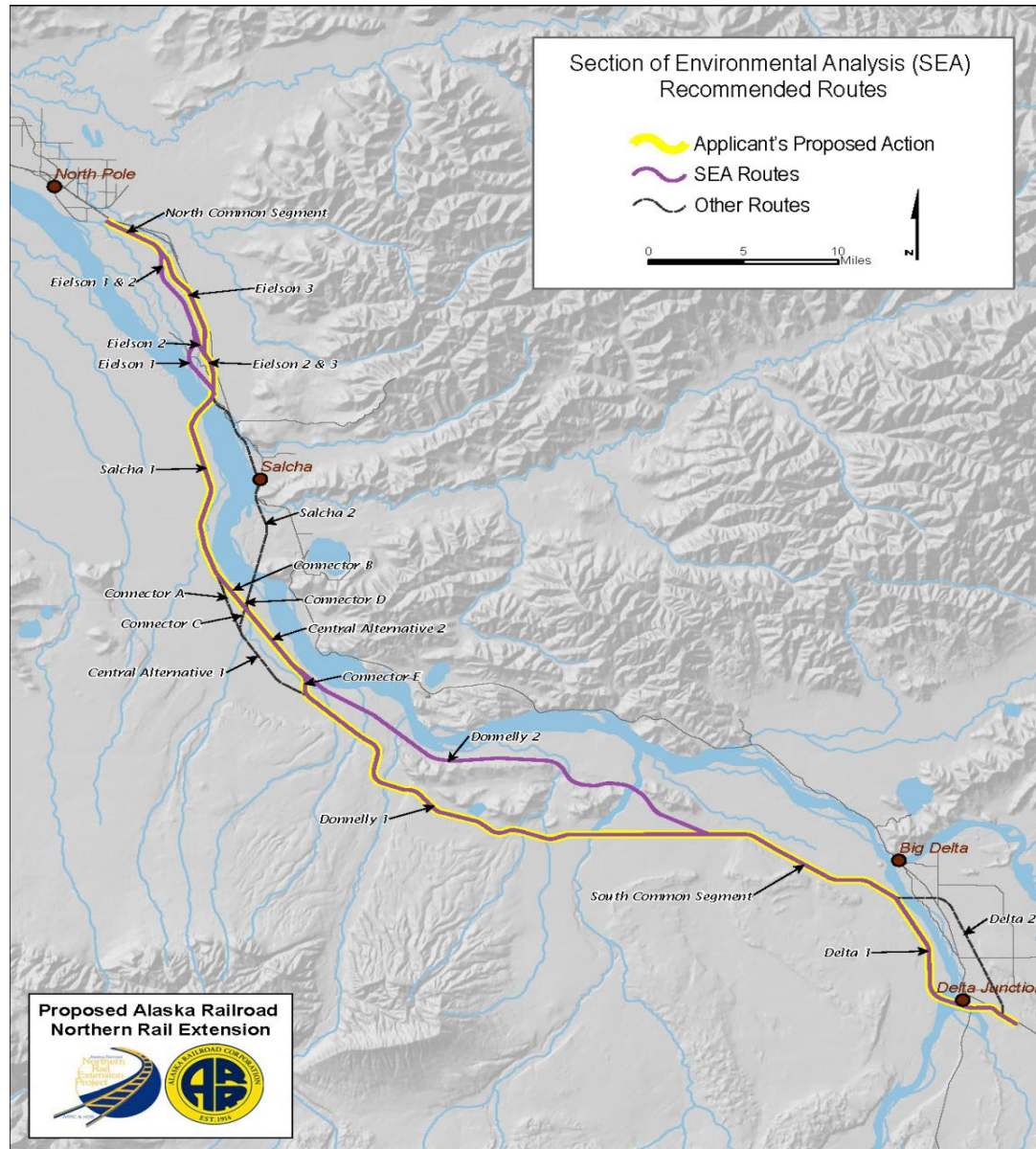
AlaskaRailroad.com

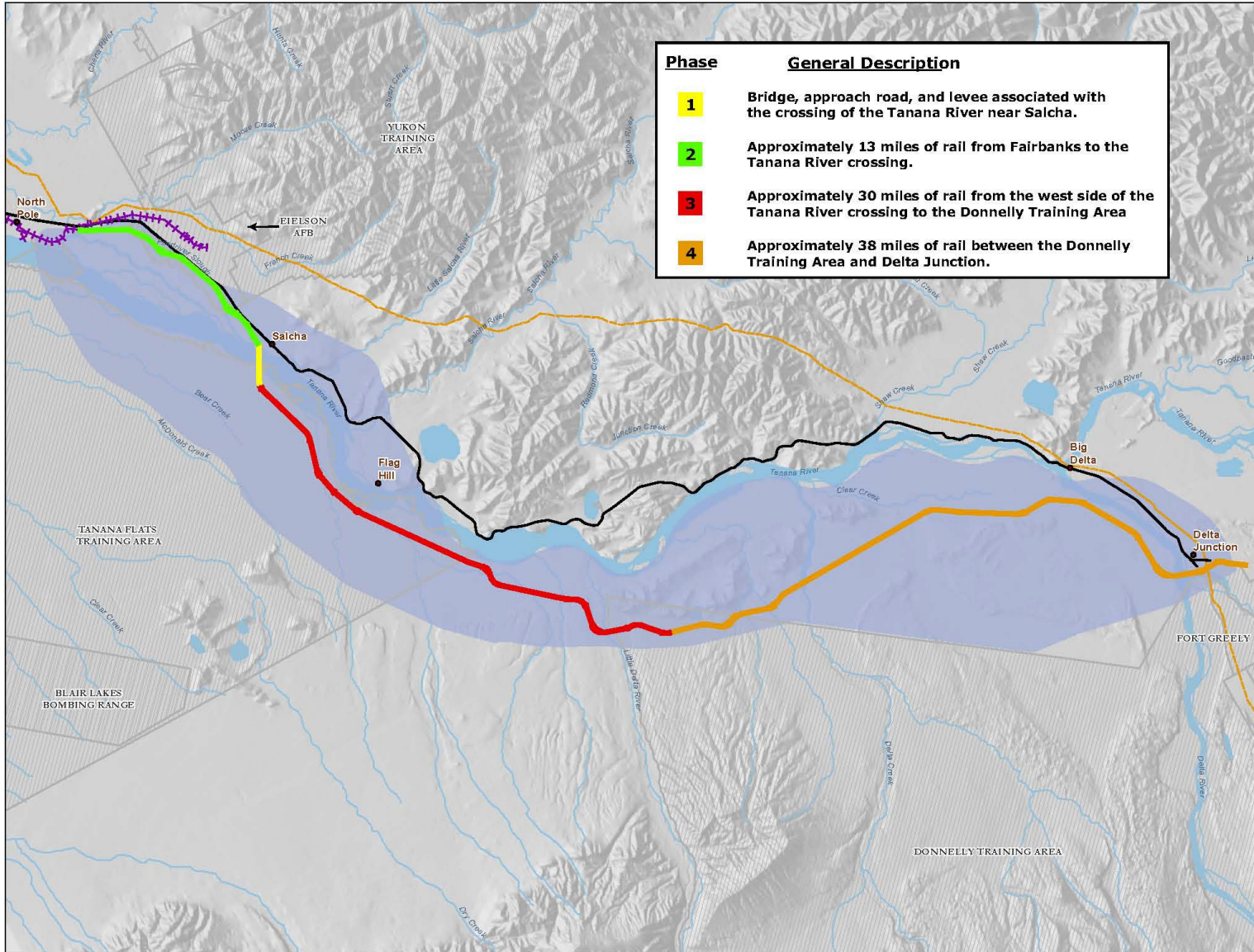






- Construction
Fall 2011-
Spring 2014
- 3300-ft
bridge
- 2-miles of
levee
- \$188.2MM
 - \$104MM
DOD/FRA
 - \$84MM
SOA





Phase 1-4

Figure
2.2.2-2

Legend

- Corridor Area
- Military Boundary
- Existing Railroad
- Trans-Alaskan Pipeline
- Richardson Highway
- Rivers and Streams



Map Projection: NAD 83 ASP 3 Feet
Data Sources: HDR, Bentley, CDEC/CBR
Author: HDR Alaska, Inc.
Date: 15 February 2013

The information displayed here
is for planning and review purposes only.

Re-Starting

- Potential NEPA Re-evaluation
- Last cost estimate was \$1 billion (2012)
- 5 years to complete (minimum)
- Unresolved Issues
 - Railroad ROW over Federal/military lands
 - Section Lines
 - Terminal facilities in Delta Junction

