

The background is a light cream color with various hand-drawn elements in blue, green, orange, and red. These include a blue horizontal line at the top left, a green oval, a yellow semi-circle, a red wavy line, a blue star-like shape, a green spiral, a red rainbow-like shape, a yellow grid-like shape, a blue scribble, a green outline of a house, a yellow dashed line, a red zigzag line, and a yellow squiggle.

Child Care Trust Funds

House Labor & Commerce

Child Care Trust Fund in New Mexico

In 2020, New Mexico passed HB 83, SB 3

- establishes the Early Childhood Trust Fund
- provides stable funding source to augment federal funds prenatal-to-five services, in addition to the funds appropriated to the Early Childhood Education and Care Department (ECECD) by the state's annual budget
- capitalized with \$320 million general fund appropriation

Endorsed by:

- Navajo Nation, the pueblo of Isleta, the pueblo of of Ohkay Owingeh, the pueblo of Santa Clara, the Greater Albuquerque Chamber of Commerce, the Santa Fe Chamber of Commerce; the New Mexico Association of Commerce and Industry; Save the Children Action Network; CHI St. Joseph's Children; United Way of Santa Fe County; New Mexico Voices for Children; the New Mexico Association for the Education of Young Children; the New Mexico Pediatric Society; the New Mexico Child Care Association; and AFT New Mexico.



Early Education and Care Public Private Fund in Massachusetts

Enacted in FY21 Budget

- created Early Education and Care Public-Private Trust Fund, administered by the commissioner of early education and care
- capitalized with appropriations and federal funds, in addition to interest earned on revenue, funds from public and private sources, including gifts, grants and donations

Funds used to:

- assist the needs of providers in early education and care mixed delivery system
- develop infrastructure to facilitate state, private, and philanthropic efforts
- enhance childcare businesses' stability and sustainability
- foster local cross-sector early childhood education collaboration and enhancement of program quality





Nebraska's Early Childhood Education Endowment Fund

"Sixpence"

- created in 2006, with \$20 million private sector investment (to be raised over 5 years) and \$40 million public investment (earmarked in Educational Lands and Trust Funds)
- in 2013, the legislature approved another \$11 million over 3 years into the Sixpence Endowment cash fund

Additional Programs

and additional resources



North
Carolina's
Children's
Trust Fund



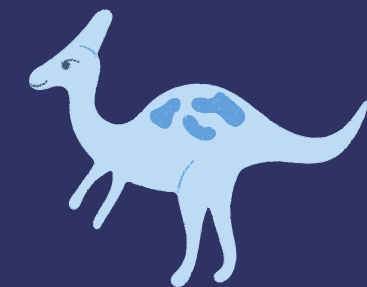
Oregon
Student
Success Act



Children's
Trust Fund
Alliance



Kansas
Children's
Cabinet and
Trust Fund



Alabama's
Children
First Trust
Fund