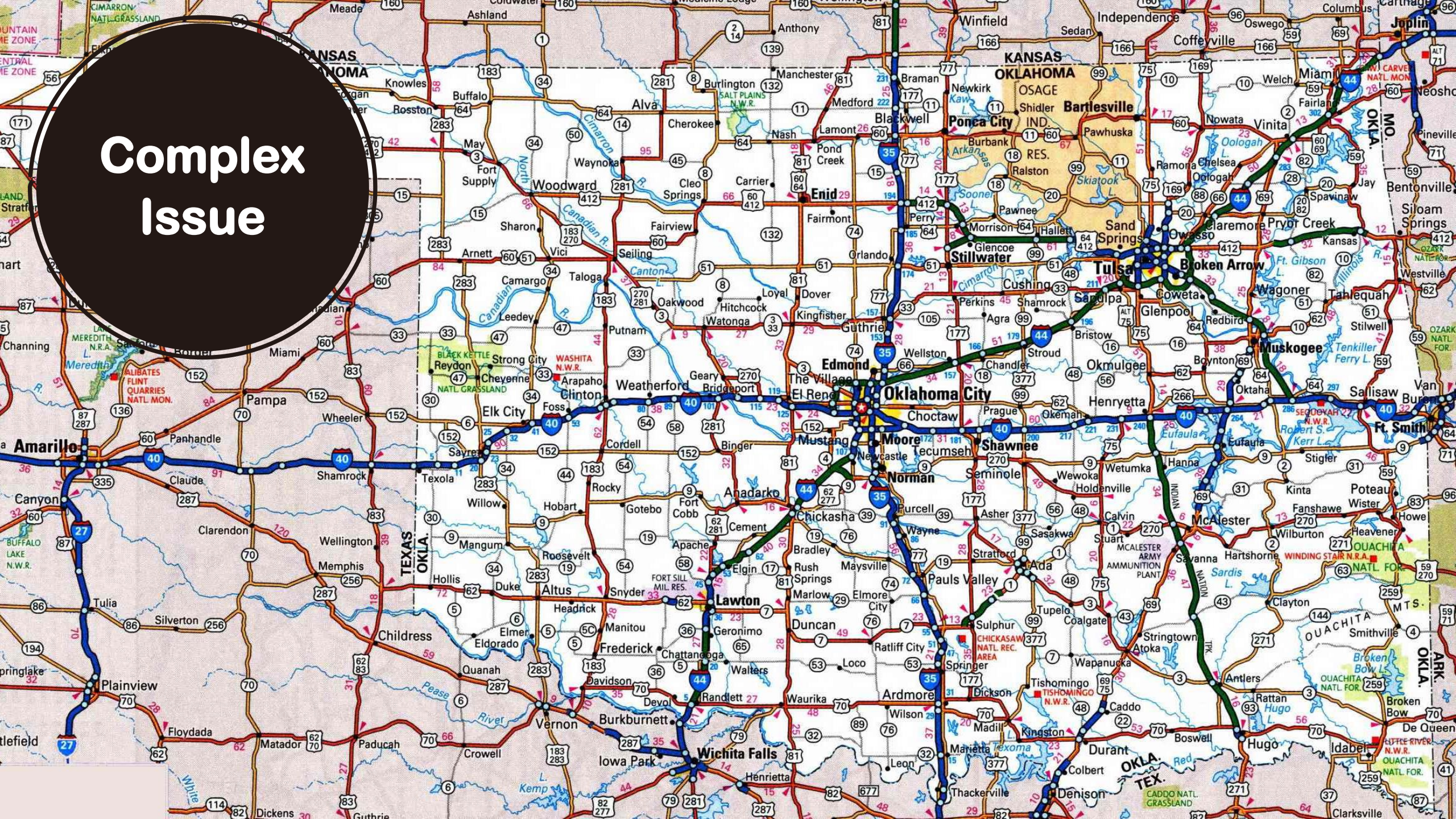




**alaska children's trust**



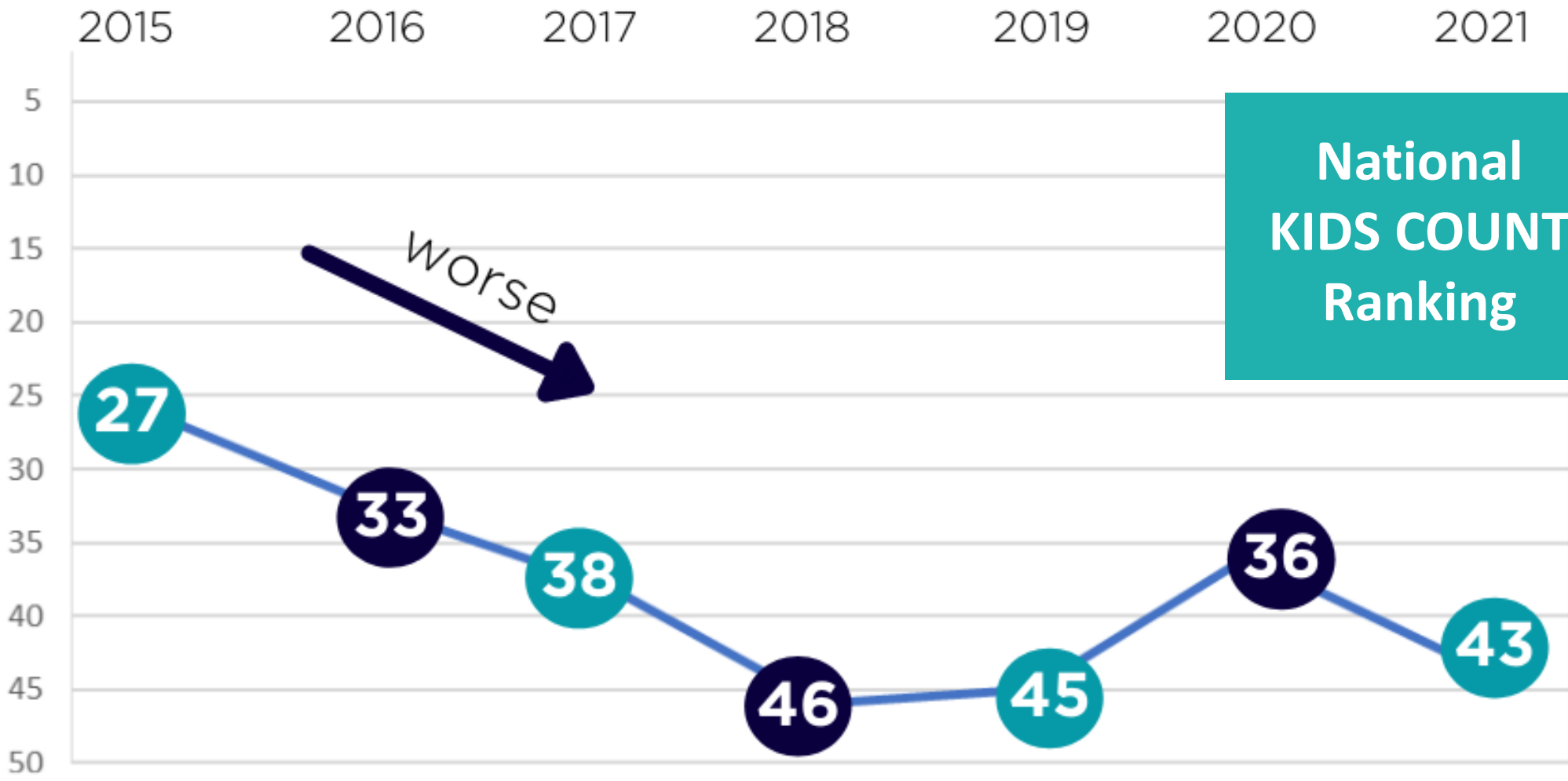
# Complex Issue





**“Parenthood, the scariest hood you’ll ever go through.”**

# Alaska's KIDS COUNT Overall Ranking for Child Well-Being



National  
KIDS COUNT  
Ranking **43**

Source: Annie E Casey Foundation – National Kids Count Ranking

National  
KIDS COUNT  
Ranking

43



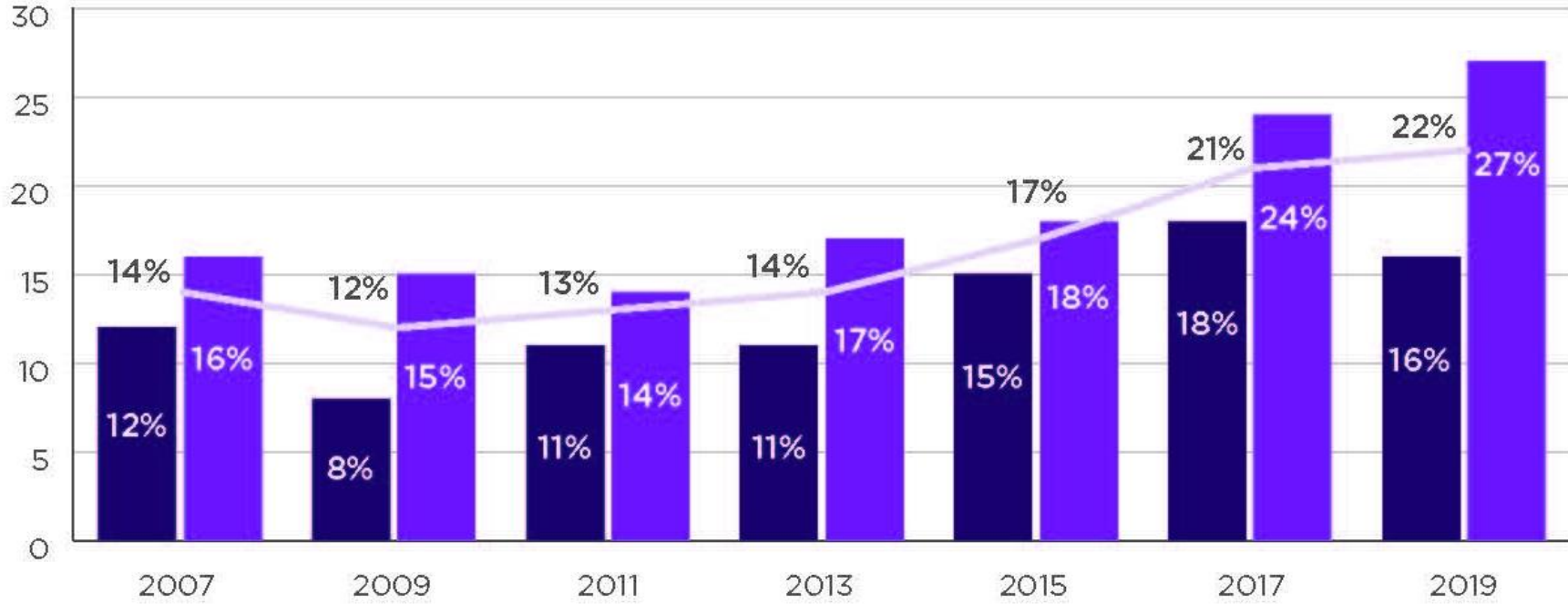
Source: Annie E Casey Foundation – National Kids Count Ranking 2021



# HIGH SCHOOL STUDENTS WHO PLANNED A SUICIDE ATTEMPT IN PAST 12 MONTHS

Percent

Male Female Alaska





**Economic  
Impact of  
Child Abuse  
& Neglect**

## Total for each non-fatal child abuse case in 2019



**\$300,200**

Human Capital



**\$968,500**

VSL/ QALY

## Total economic cost of all 3,139 cases of child abuse

**\$710**

million

Human Capital



**\$2.3**

billion

VSL/ QALY







**Special education**  
**\$21,869 per victim**

maltreatment victims often experience delays in their educational progress, requiring special education services more frequently. The increased special education costs due to child abuse and neglect presently value \$21,869 per victim or nearly \$5 billion for all victims in 2019.



**Health care**  
**\$86,044 per victim**

Children who experience abuse or neglect are more likely to be



**Health care**  
**\$86,044 per victim**



**Productivity loss**  
**\$164,861 per victim**

Abuse or neglect in childhood is correlated with decreased early



**Child welfare**  
**\$14,928 per victim**

government agencies spend resources investigating, placing, and taking care of children. These costs total \$14,928 per victim or over \$35 million



**Quality of life losses**  
**\$833,168 per victim**

Intangibles like emotional anguish and quality of life are difficult to measure. Replicating previous approaches estimate that each victim or child faces \$833,168 in reduced quality of life or \$1.96 billion for all cases statewide.

**Quality of life losses**  
**\$833,168 per victim**

Intangibles like emotional anguish and quality of life are difficult to measure. Replicating previous approaches estimate that each victim or child faces \$833,168 in reduced quality of life or \$1.96 billion for all cases statewide.

**Criminal justice**  
**\$12,499 per victim**

Children who experience abuse or neglect are more likely to be

Abuse or neglect in childhood is correlated with decreased

present value of \$14,928 per victim in 2019, and over \$35 million in total.



**Special education**  
**\$21,869 per victim**

Maltreatment victims often experience delays in their educational progress, requiring special education services more frequently. The increased special education costs due to child abuse and neglect presently value \$21,869 per victim or nearly \$51 billion for all victims in 2019.



**Health care**  
**\$86,044 per victim**

Children who experience abuse or neglect are more likely to be



**Productivity losses**  
**\$164,861 per victim**

Abuse or neglect in childhood is correlated with decreased earnings in adulthood. Government agencies spend resources investigating reports, placing children in foster homes, and taking other actions. These costs total over \$35 million per year.



**Child welfare**  
**\$14,928 per victim**

Government agencies spend resources investigating reports, placing children in foster homes, and taking other actions. These costs total over \$35 million per year.



**Quality of life losses**  
**\$833,168 per victim**

Intangibles like emotional anguish and reduced quality of life are difficult to measure. Replicating previous approaches to estimate that each victim or child faces \$833,168 in reduced quality of life or \$1.96 billion for all cases statewide.



**Productivity losses**  
**\$164,861 per victim**

**Criminal justice**  
**\$12,499 per victim**

Children who experience abuse or neglect are more likely to be

Abuse or neglect in childhood is correlated with decreased



**Special education**  
**\$21,869 per victim**

maltreatment victims often experience delays in their educational progress, requiring special education services more frequently. The increased special education costs due to child abuse and neglect presently value \$21,869 per victim or nearly \$51 billion for all victims in 2019.



**Health care**  
**\$86,044 per victim**

Children who experience abuse or neglect are more likely to be



**Productivity loss**  
**\$164,861 per victim**

Abuse or neglect in childhood is correlated with decreased early



**Child welfare**  
**\$14,928 per victim**

Abuse or neglect in childhood is correlated with decreased early government agencies spend resources investigating reports, placing children in foster homes, and taking other actions. These costs total a value of \$14,928 per victim or over \$35 million in total.



**Quality of life losses**  
**\$833,168 per victim**

Intangibles like emotional anguish and quality of life are difficult to measure. Replicating previous approaches to estimate that each victim or child faces \$833,168 in reduced quality of life or \$1.96 billion for all cases statewide.



**Criminal justice**  
**\$12,499 per victim**

**Criminal justice**  
**\$12,499 per victim**

Children who experience abuse or neglect are more likely to be

Abuse or neglect in childhood is correlated with decreased

**Quality of life losses**  
**\$833,168 per victim**

Intangibles like emotional anguish and quality of life are difficult to measure. Replicating previous approaches to estimate that each victim or child faces \$833,168 in reduced quality of life or \$1.96 billion for all cases statewide.



**Special education**  
**\$21,869 per victim**

maltreatment victims experience delays in their educational progress, requiring special education services more frequently. The increased education costs due to child abuse and neglect presently valued at \$21,869 per victim or nearly \$1 billion for all victims in



**Health care**  
**\$86,044 per victim**

Justice  
per victim  
Children who experience abuse or neglect are more likely to be



**Productivity loss**  
**\$164,861 per victim**

Abuse or neglect in childhood is correlated with decreased earning power over the course of a lifetime. Adjusting for inflation, these costs



**Child welfare**  
**\$14,928 per victim**

Government agencies spend resources investigating child abuse and neglect, placing children in foster homes, and taking protective actions. These costs total \$14,928 per victim or \$35 million



**Quality of life losses**  
**\$833,168 per victim**

Intangibles like emotional anguish and reduced quality of life are difficult to measure. Replicating previous approaches, we estimate that each victim or child faces \$833,168 in reduced quality of life or \$1.96 billion for all cases statewide.



**Special education**  
**\$21,869 per victim**

**Criminal justice**  
**\$12,499 per victim**

Children who experience abuse or neglect are more likely to be

Abuse or neglect in childhood is correlated with decreased



**Special education**  
**\$21,869 per victim**

Maltreatment victims often experience delays in their educational progress, requiring special education services more frequently. The increased special education costs due to child abuse and neglect presently value \$21,869 per victim or nearly \$5 billion for all victims in 2019.



**Health care**  
**\$86,044 per victim**

Children who experience abuse or neglect are more likely to be



**Productivity loss**  
**\$164,861 per victim**

Abuse or neglect in childhood is correlated with decreased



**Child welfare**  
**\$14,928 per victim**

Government agencies spend on investigating reports, placing children in foster homes, and taking other actions. These costs total \$14,928 per victim, or over \$35 million for all victims in 2019.



**Quality of life losses**  
**\$833,168 per victim**

Intangibles like emotional anguish and reduced quality of life are difficult to measure. Replicating previous approaches to estimate that each victim or child faces \$833,168 in reduced quality of life, or \$1.96 billion for all cases statewide.



**Child welfare**  
**\$14,928 per victim**

**Criminal justice**  
**\$12,499 per victim**

Children who experience abuse or neglect are more likely to be

Abuse or neglect in childhood is correlated with decreased

ng  
its  
r  
in

**Quality of life losses**  
**\$833,168 per victim**

Intangibles like emotional anguish and reduced quality of life are difficult to measure. Replicating previous approaches to estimate that each victim or child faces \$833,168 in reduced quality of life, or \$1.96 billion for all cases statewide.



**Special education**  
**\$21,869 per victim**

maltreatment victims of  
 experience delays in their  
 educational progress, requir  
 special education services m  
 ently. The increased spe  
 cial education costs due to child a  
 nd neglect presently valu  
 \$21,869 per victim or nearly  
 \$1.96 billion for all victims in 20



**Health care**  
**\$86,044 per victim**

Justice  
 per victim  
 experience abuse or  
 are likely to be



**Productivity loss**  
**\$164,861 per victim**

Abuse or neglect in childhood  
 correlated with decreased ear  
 power over the course of a life



**Child welfare**  
**\$14,928 per victim**

government agencies spend  
 resources investigating  
 treatment reports, placing  
 and taking  
 These costs  
 of \$14,928 per  
 over \$35 million



**Quality of life losses**  
**\$833,168 per victim**

Intangibles like emotional anguish  
 quality of life are difficult to meas  
 Replicating previous approaches  
 estimate that each victim or child  
 faces \$833,168 in reduced quality o  
 or \$1.96 billion for all cases state



**Quality of life losses**  
**\$833,168 per victim**

**Criminal justice**  
**\$12,499 per victim**

Children who experience abuse or  
 neglect are more likely to be

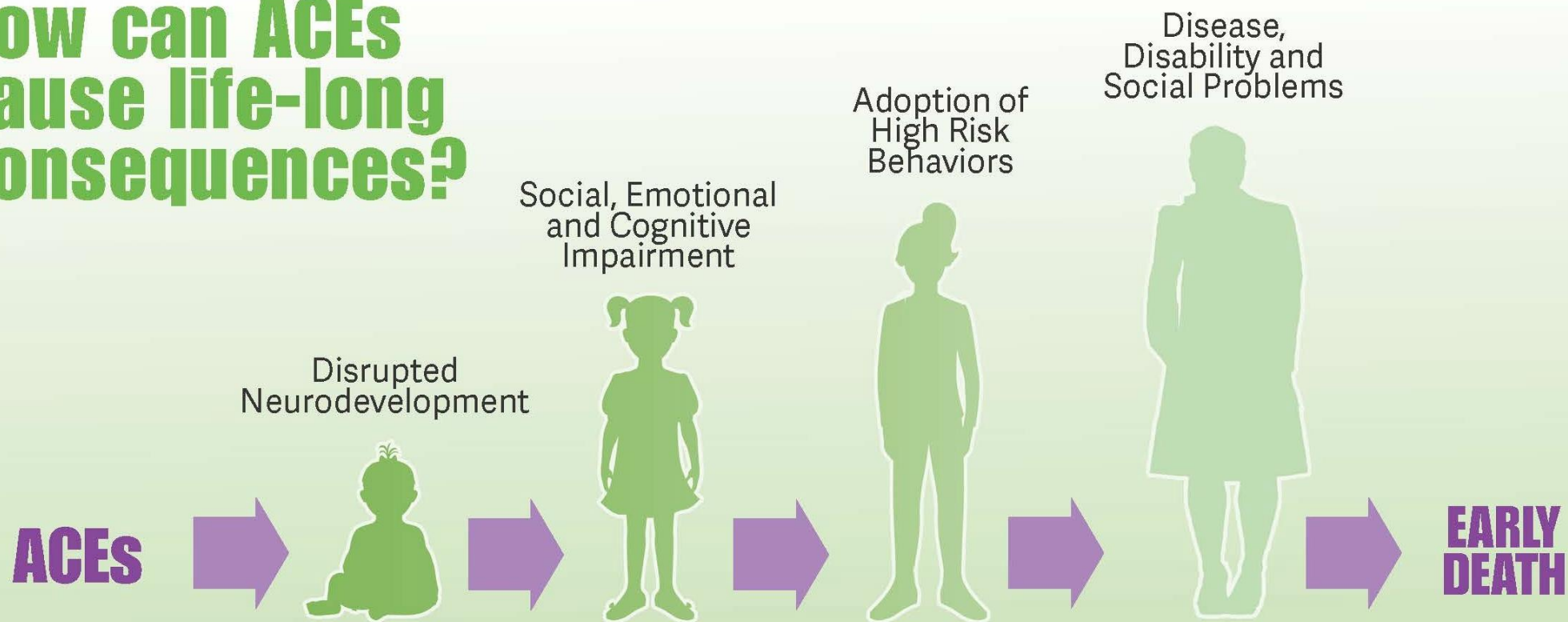
Abuse or neglect in  
 correlated with deep



Child of God

**ADVERSE  
CHILDHOOD  
EXPERIENCES**

# How can ACEs cause life-long consequences?







**41%**  
of Medicaid  
enrollment

in Alaska can be  
linked back to ACEs.



**22,000 Alaskans**  
rely on Medicaid  
due to ACEs at an  
estimated cost of



**\$360 million**



**32%**  
of Alaskan  
Smokers

likely smoke  
due to ACEs.



Each year,  
**17,000 Alaskans**  
with ACEs smoke  
at an estimated  
cost of



**\$190 million**



**24%**  
non-gestational  
diabetes

cases are linked  
with ACEs.



**10,000 Alaskans**  
with ACEs have  
diabetes and  
annually cost



**\$110 million**



**14%**  
of Obesity

in Alaska is linked  
with ACEs.



Each year,  
**22,000 Alaskans**  
with obesity health  
issues related to  
ACEs cost more  
than



**\$31 million**



**11%**  
of binge drinking

is linked with  
ACEs.



Each year,  
**11,000 Alaskans**  
likely binge drink  
due to ACEs at a  
cost of



**\$70 million**

# Health Costs<sup>1</sup>

Source: Alaska Mental Health Board



**41%**  
of Medicaid  
enrollment

in Alaska can be  
linked back to ACEs.

↓  
**22,000 Alaskans**  
rely on Medicaid  
due to ACEs at an  
estimated cost of

↓  
**\$360 million**



**32%**  
of Alaskan  
Smokers  
likely smoke  
due to ACEs.

↓  
Each year,  
**37,000 Alaskans**  
with ACEs smoke  
at an estimated  
cost of

↓  
**\$190 million**



**24%**  
on-gestational  
diabetes  
cases are linked  
with ACEs.

↓  
**10,000 Alaskans**  
with ACEs have  
diabetes and  
annually cost

↓  
**\$110 million**



**14%**  
of Obesity  
in Alaska is linked  
with ACEs.

↓  
Each year,  
**22,000 Alaskans**  
with obesity health  
issues related to  
ACEs cost more  
than

↓  
**\$31 million**



**11%**  
of binge drinking  
is linked with  
ACEs.

↓  
Each year,  
**11,000 Alaskans**  
likely binge drink  
due to ACEs at a  
cost of

↓  
**\$70 million**

# Health Costs<sup>1</sup>



**41%**  
of Medicaid  
enrollment  
in Alaska can be  
linked back to ACEs.

↓  
**22,000 Alaskans**  
rely on Medicaid  
due to ACEs at an  
estimated cost of

↓  
**\$360 million**



**32%**  
of Alaskan  
Smokers  
likely smoke  
due to ACEs.

↓  
Each year,  
**37,000 Alaskans**  
with ACEs smoke  
at an estimated  
cost of

↓  
**\$190 million**



**24%**  
non-gestational  
diabetes  
cases are linked  
with ACEs.

↓  
**10,000 Alaskans**  
with ACEs have  
diabetes and  
annually cost

↓  
**\$110 million**



**14%**  
of Obesity  
in Alaska is linked  
with ACEs.

↓  
Each year,  
**22,000 Alaskans**  
with obesity health  
issues related to  
ACEs cost more  
than

↓  
**\$31 million**



**11%**  
of binge drinking  
is linked with  
ACEs.

↓  
Each year,  
**11,000 Alaskans**  
likely binge drink  
due to ACEs at a  
cost of

↓  
**\$70 million**

# Health Costs<sup>1</sup>

Source: Alaska Mental Health Board



**41%**  
of Medicaid  
enrollment

in Alaska can be  
linked back to ACEs.



**22,000 Alaskans**  
rely on Medicaid  
due to ACEs at an  
estimated cost of



**\$360 million**



**32%**  
of Alaskan  
Smokers

likely smoke  
due to ACEs.



Each year,  
**37,000 Alaskans**  
with ACEs smoke  
at an estimated  
cost of



**\$190 million**



**24%**  
non-gestational  
diabetes

cases are linked  
with ACEs.



**10,000 Alaskans**  
with ACEs have  
diabetes and  
annually cost



**\$110 million**



**14%**

of Obesity

in Alaska is linked  
with ACEs.



Each year,  
**22,000 Alaskans**  
with obesity health  
issues related to  
ACEs cost more  
than



**\$31 million**

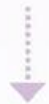


**11%**

of binge drinking  
is linked with  
ACEs.



Each year,  
**11,000 Alaskans**  
likely binge drink  
due to ACEs at a  
cost of



**\$70 million**

# Health Costs<sup>1</sup>

Source: Alaska Mental Health Board



**41%**  
of Medicaid  
enrollment  
in Alaska can be  
linked back to ACEs.

↓  
**22,000 Alaskans**  
rely on Medicaid  
due to ACEs at an  
estimated cost of

↓  
**\$360 million**



**32%**  
of Alaskan  
Smokers  
likely smoke  
due to ACEs.

↓  
Each year,  
**37,000 Alaskans**  
with ACEs smoke  
at an estimated  
cost of

↓  
**\$190 million**



**24%**  
non-gestational  
diabetes  
cases are linked  
with ACEs.

↓  
**10,000 Alaskans**  
with ACEs have  
diabetes and  
annually cost

↓  
**\$110 million**



**14%**  
of Obesity  
in Alaska is linked  
with ACEs.

↓  
Each year,  
**22,000 Alaskan**  
with obesity health  
issues related to  
ACEs cost more  
than

↓  
**\$31 million**



**11%**  
of binge drinking  
is linked with  
ACEs.

↓  
Each year,  
**11,000 Alaskans**  
likely binge drink  
due to ACEs at a  
cost of

↓  
**\$70 million**



**SOLUTIONS**

**RETURN ON  
INVESTMENT**





**30%**  
for children & families

Alaska dedicates 30% of its spending to children and families.

## 2020 ALASKA CHILDREN'S BUDGET

*Where and How Alaska Invests in Children*



## KEY FINDINGS

**Total Children's Budget is nearly 13% (\$400M) smaller compared to average spending earlier in the decade.**

- Capital budget is down more than 95% compared to FY 2011-2014



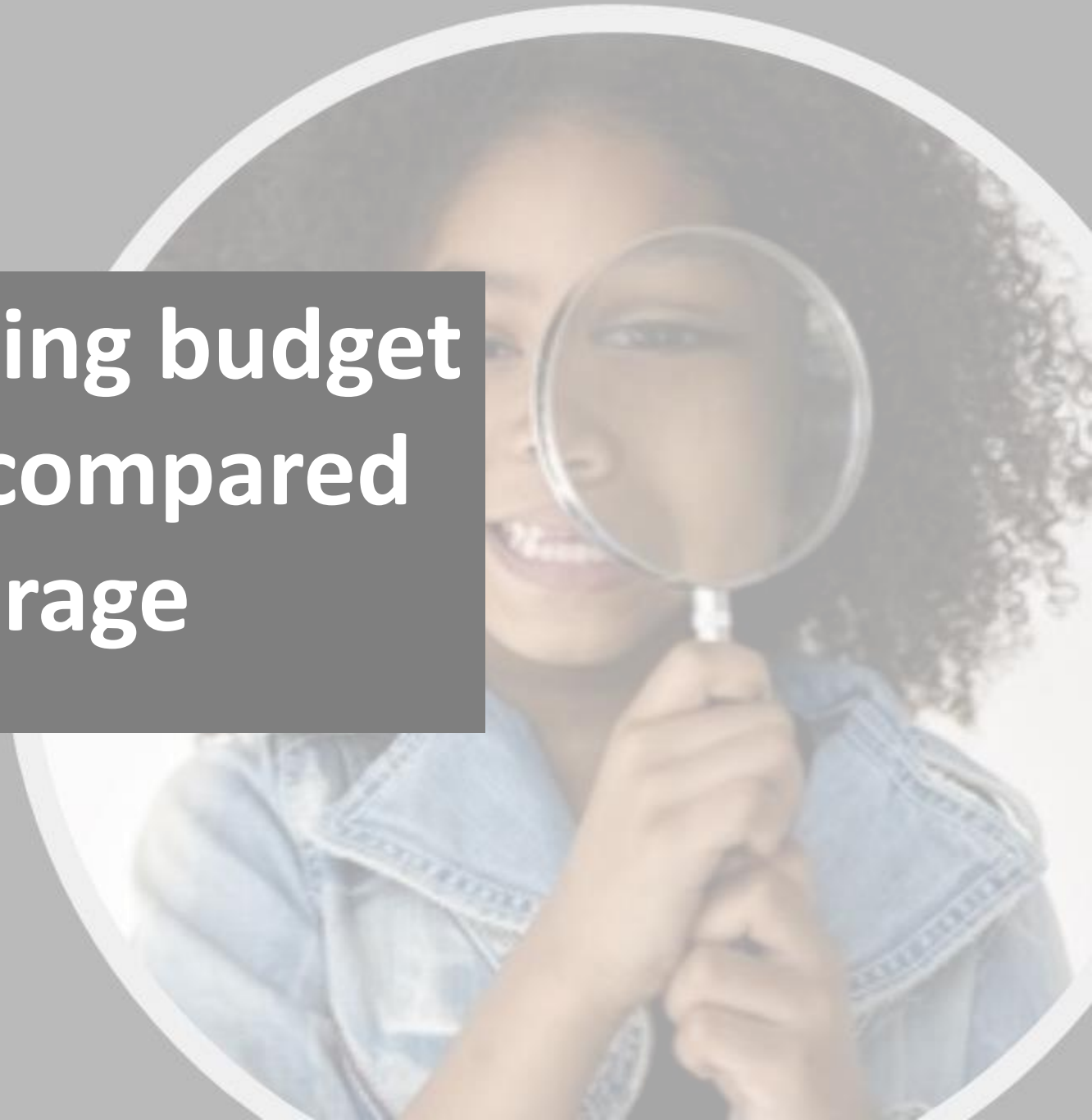
# KEY FINDINGS

- Total Children's Budget is nearly 13% (\$400M) smaller compared to average

**Departmental Operating budget  
is down 3% (\$90M) compared  
to FY 11-14 average**

percent \$140M) smaller than FY 2011-2014

- Capital budget is down more than 95% compared to FY 2011-2014



# KEY FINDINGS

- Total Children's Budget is nearly 13% (\$400M) smaller compared to average spending earlier in the decade.
- Departmental Operating budget is down

**Non-departmental Operating budget is 36 percent (\$140M) smaller than FY 11-14**

- Capital budget is down more than 95% compared to FY 2011-2014



# KEY FINDINGS

- Total Children's Budget is nearly 13% (\$400M) smaller compared to average spending earlier in the decade.
- Departmental Operating budget is down 3% (\$90M) compared to FY 2011-2014 average.

**Capital budget is down  
more than 95% compared  
to FY 11-14**



A young girl with spiky hair is sitting on a purple exercise ball in a gymnasium. She is wearing a striped shirt and pink pants. The ball has the text "HOP ALONG BOUNCER" on it. In the background, there are ropes hanging from the ceiling and a wooden bench.

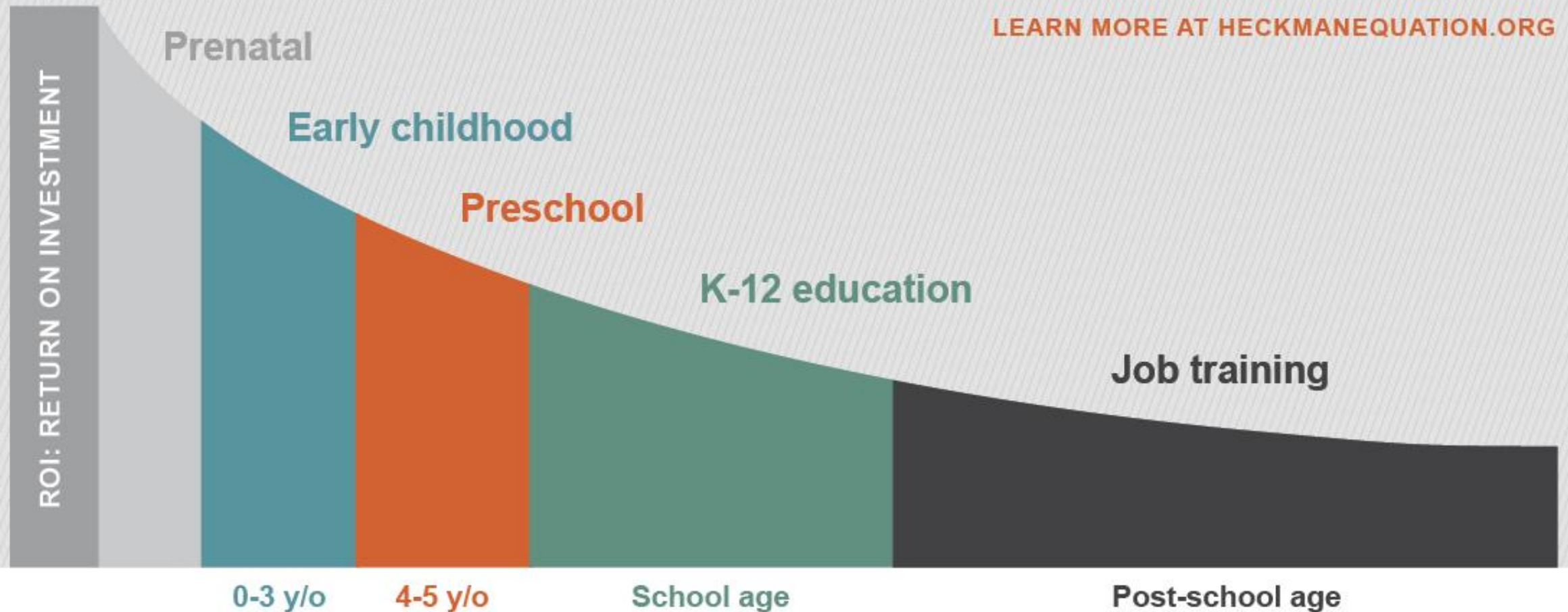
**INVEST  
EARLY**

**For every \$1  
invested in early  
childhood  
education, there  
is a \$7- \$13  
return on  
investment.**



Return on Investment

# Economic impact of investing in early childhood learning.

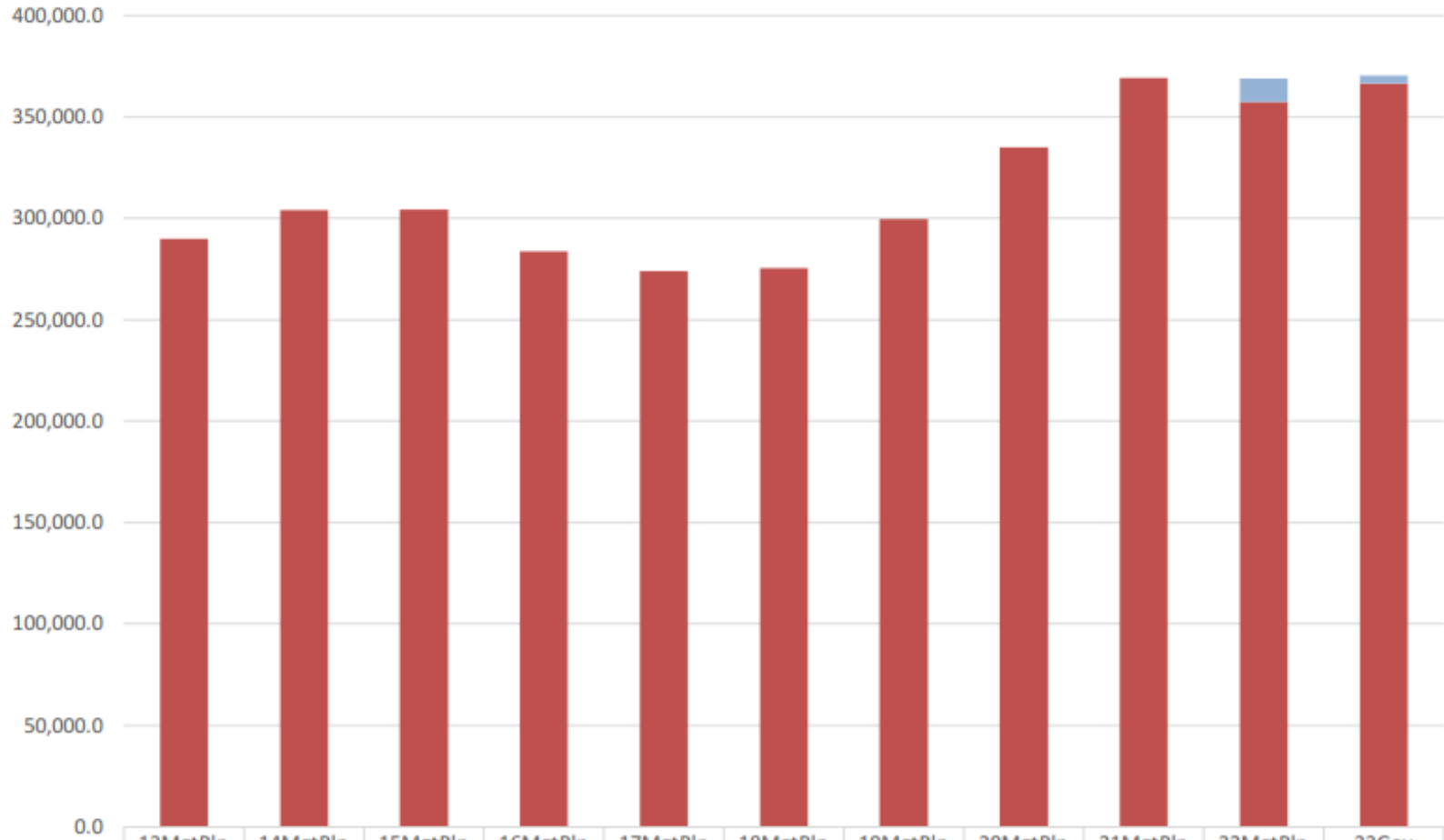


Source: <https://heckmanequation.org/resource/the-heckman-curve/>

## Department of Corrections Share of Total Agency Operations (GF Only) (\$ Thousands)

The Department's GF budget (excluding SB 55 increments) increased by about \$80 million (28%) between FY13 and FY23.

The Department's total FY23 GF budget equals \$1,144 per resident worker, based on 323,711 resident workers.



	13MgtPln	14MgtPln	15MgtPln	16MgtPln	17MgtPln	18MgtPln	19MgtPln	20MgtPln	21MgtPln	22MgtPln	23Gov
SB55 Impact	-	-	-	-	-	-	-	-	-	11,623.7	3,866.4
Total Agency Budget (GF Only)	290,024.2	304,075.3	304,435.3	283,744.0	273,825.8	275,509.6	299,650.0	334,858.7	369,202.8	357,292.7	366,545.0
% of All Agencies' Budgets	3.6%	3.4%	3.7%	3.6%	4.6%	4.7%	4.6%	5.6%	6.0%	6.9%	5.6%



**PRIMARY  
PREVENTION**

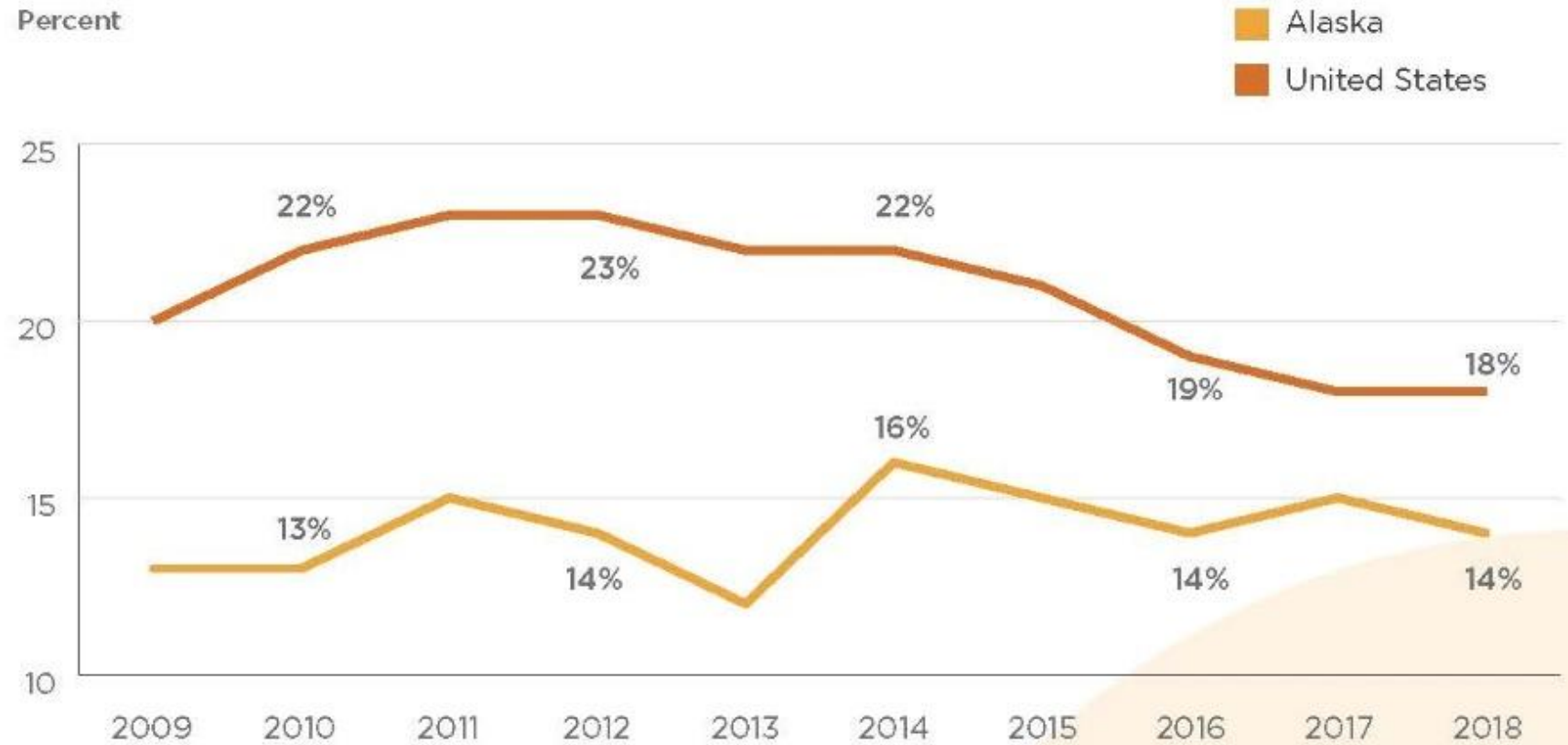
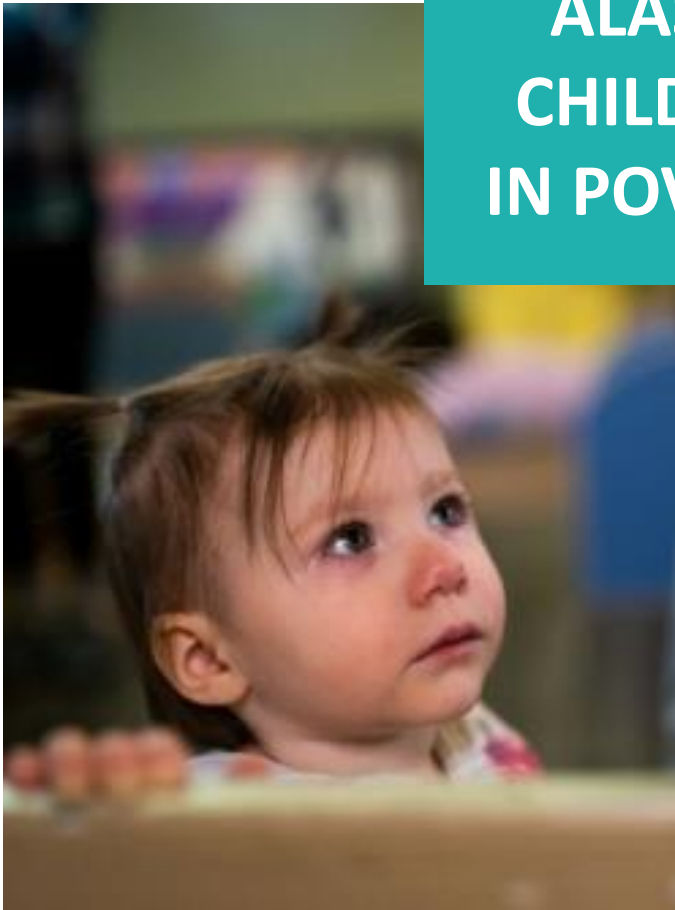


**SINGLE POINT  
OF ENTRY**



ALASKA  
CHILDREN  
IN POVERTY

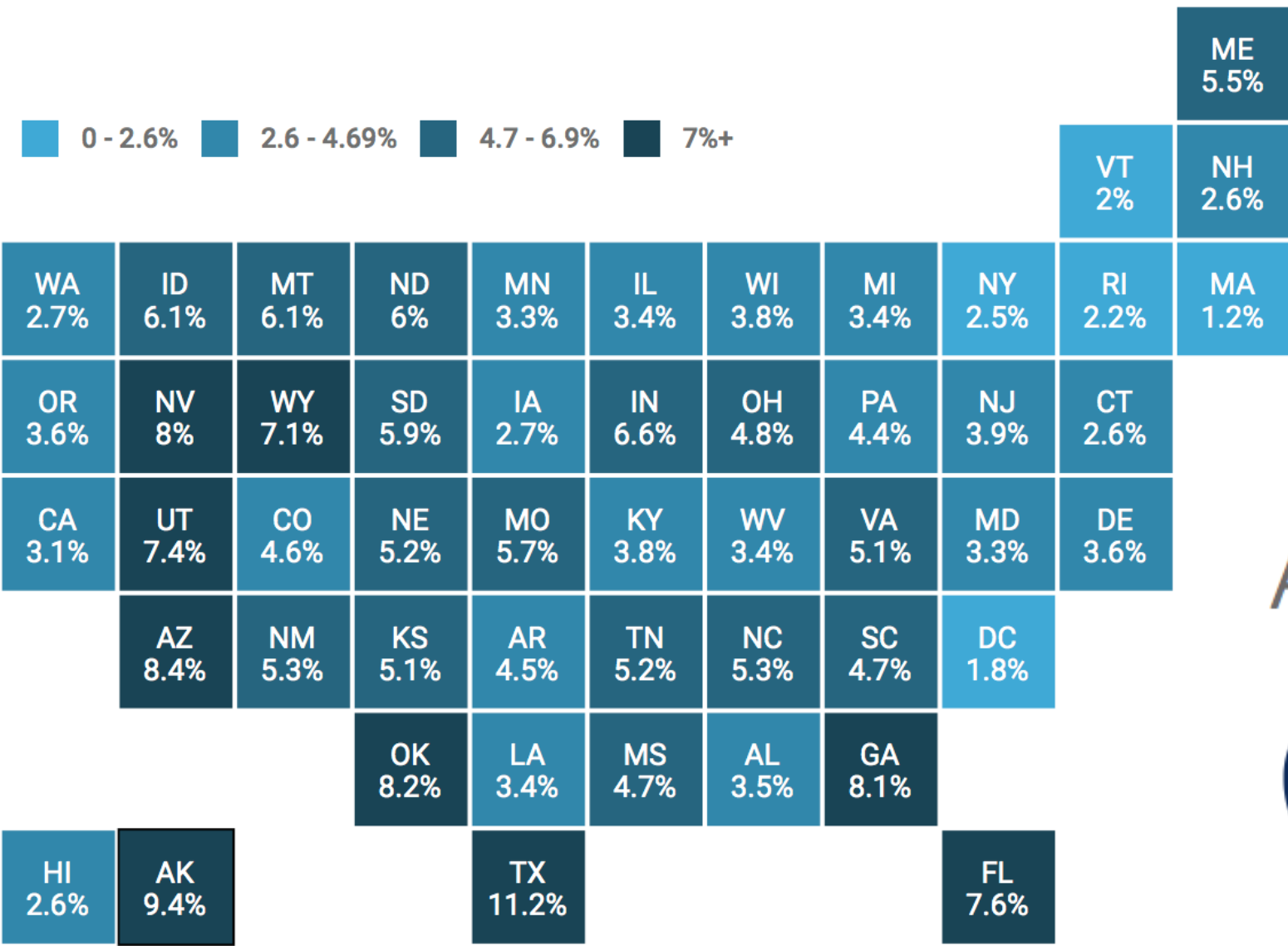
14%




Source: Alaska Kids Count 2020

**Children  
Uninsured  
Rate**





ALASKA 

# 9.4%

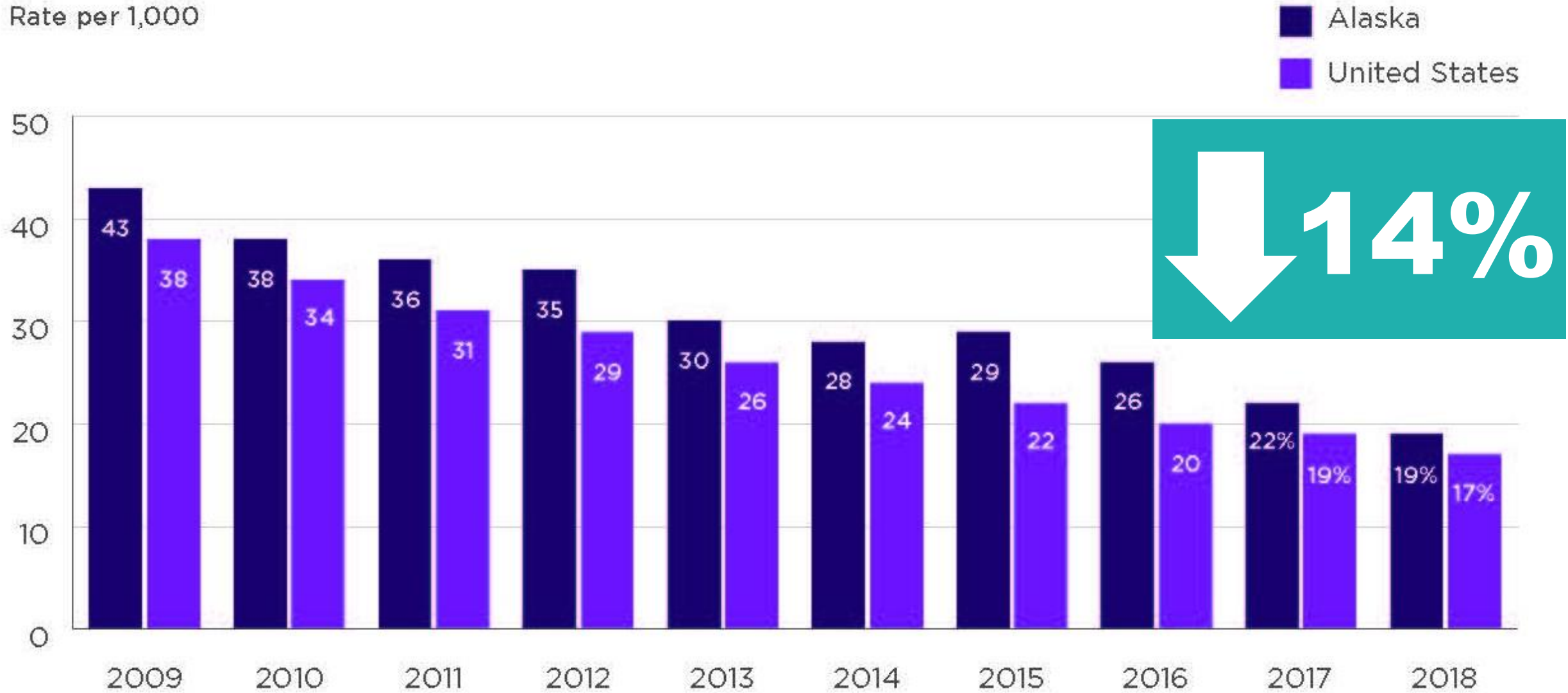
Source: Georgetown University Center for Children & Families

**FAMILY  
PLANNING**

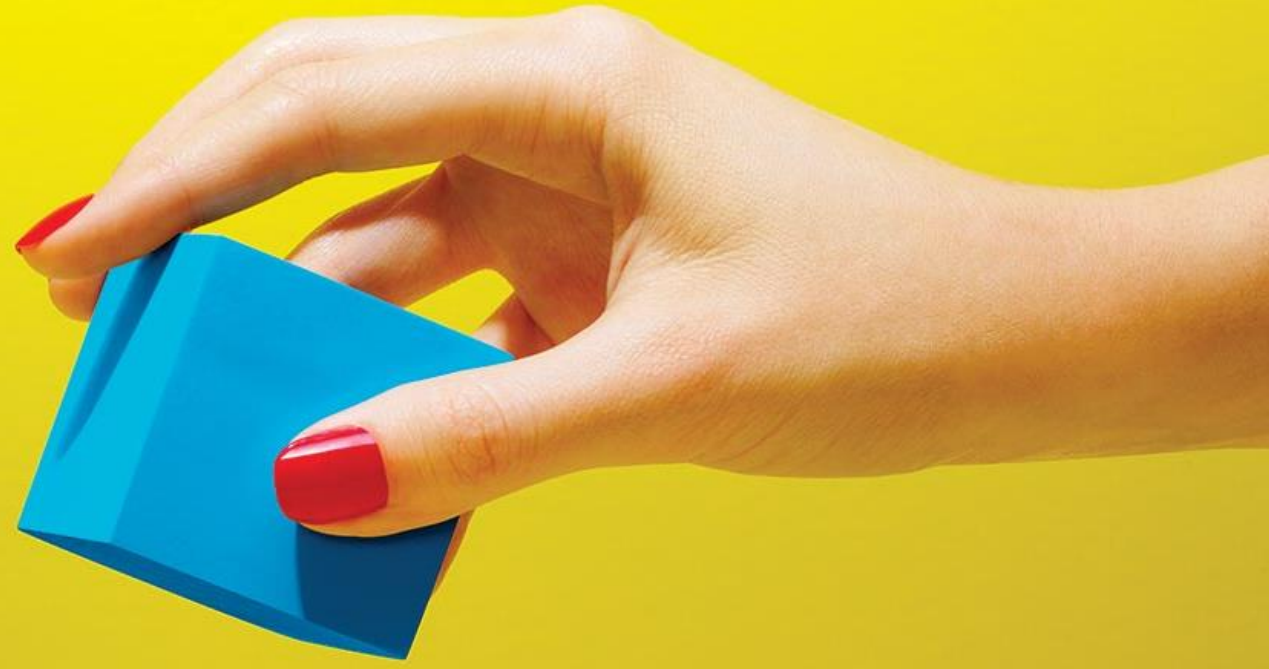


# TEEN BIRTHS

Rate per 1,000

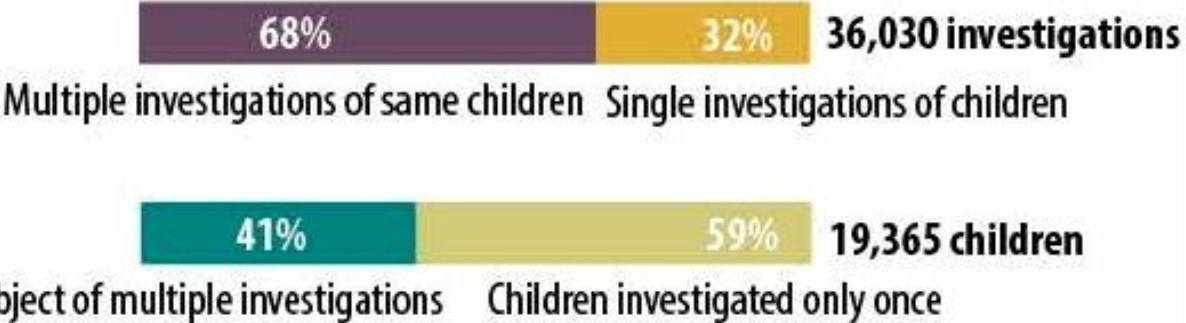


**REINVENT  
CHILD  
WELFARE**





**Figure S-3. How Many OCS Investigations Are of Repeat Maltreatment?\***  
(2005-2013)

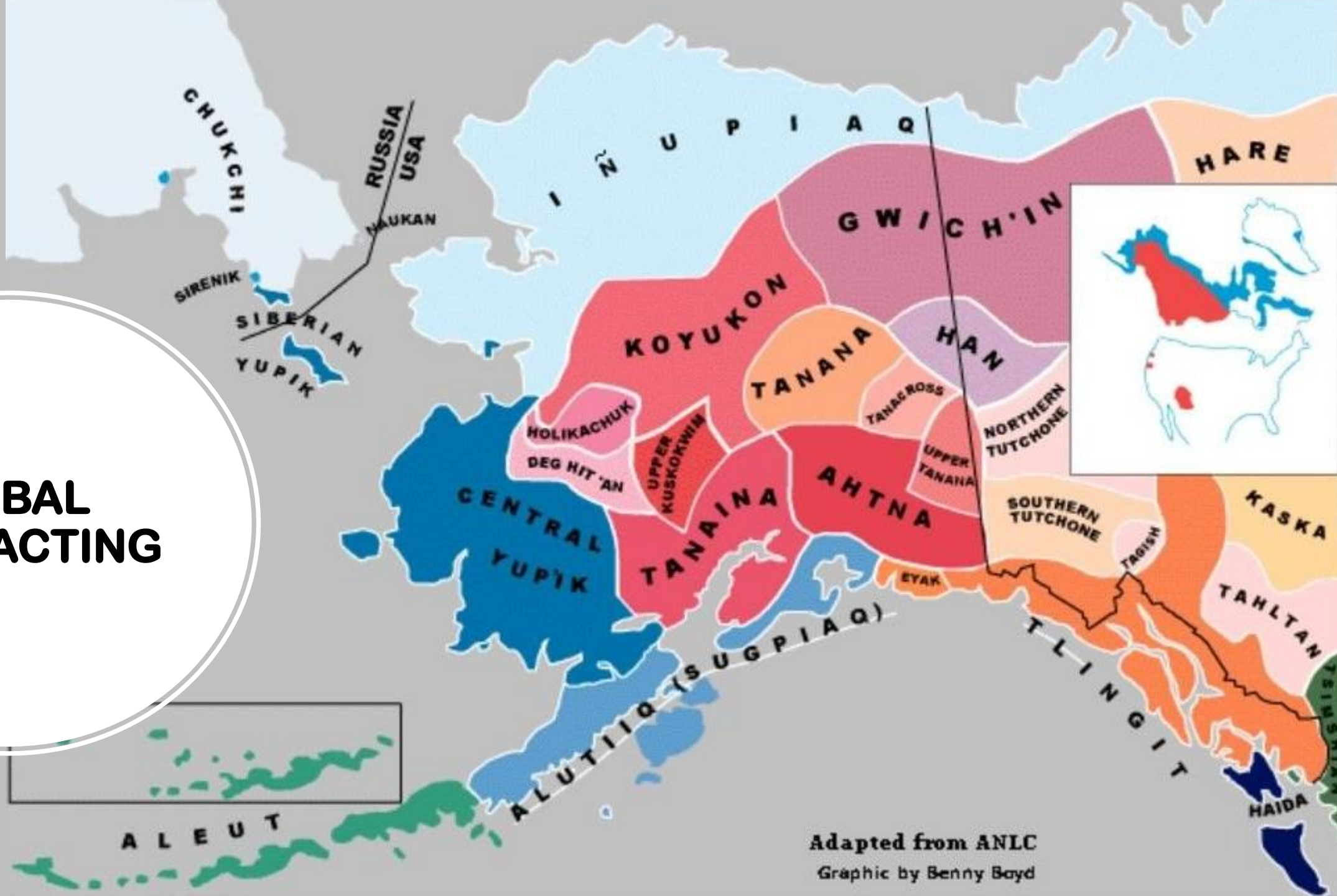


\*Among children born in or after 2005.

Source: National Child Abuse and Neglect Data System



# TRIBAL COMPACTING



Adapted from ANLC  
Graphic by Benny Boyd



**STRENGTHEN  
DATA**





Trevor Storrs  
President & CEO

[tstorrs@alaskachildrenstrust.org](mailto:tstorrs@alaskachildrenstrust.org)

[Alaskachildrenstrust.org](http://Alaskachildrenstrust.org)