

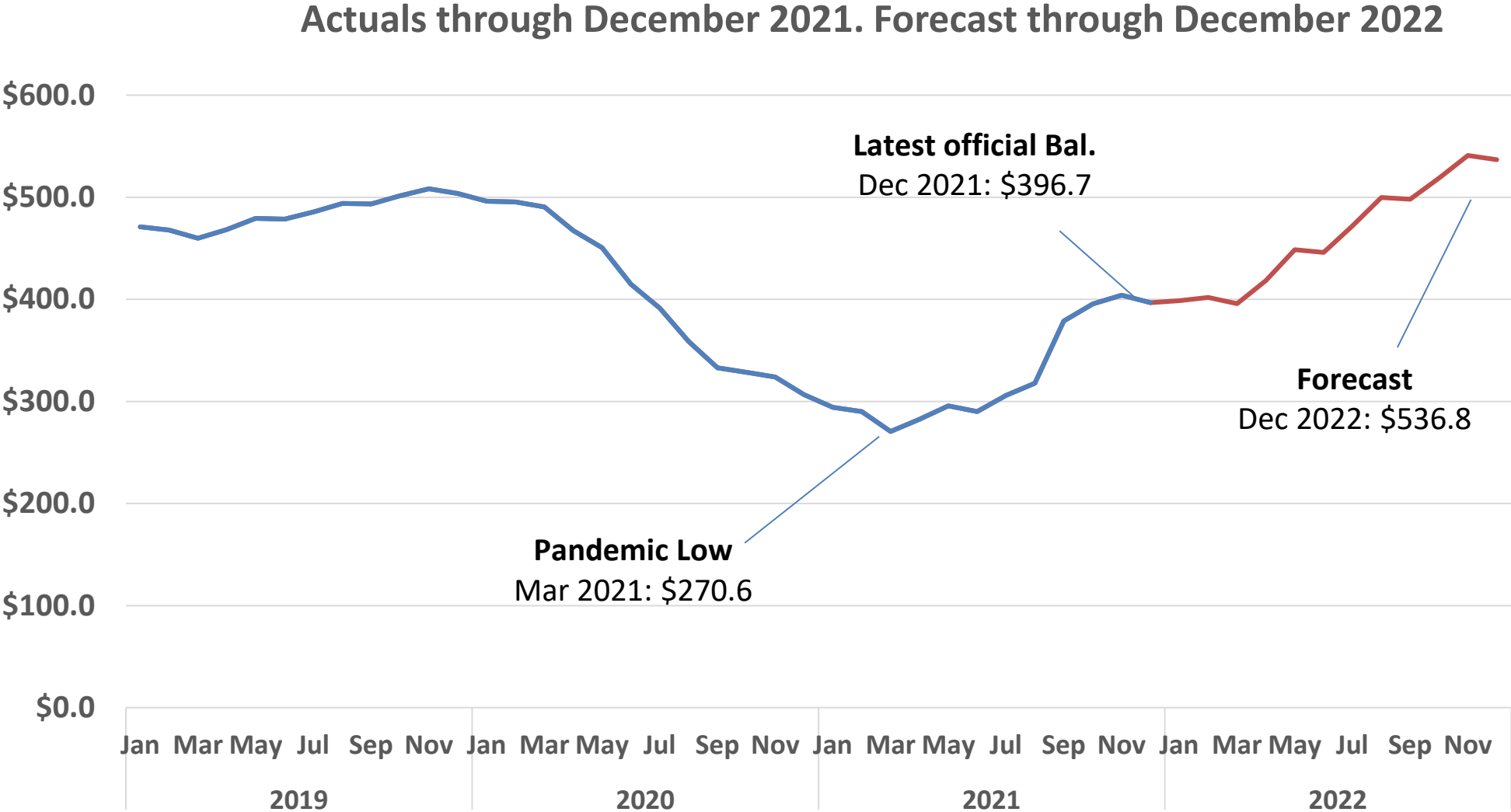
House Finance Subcommittee

# Unemployment Insurance Financing Metrics

February 9, 2022

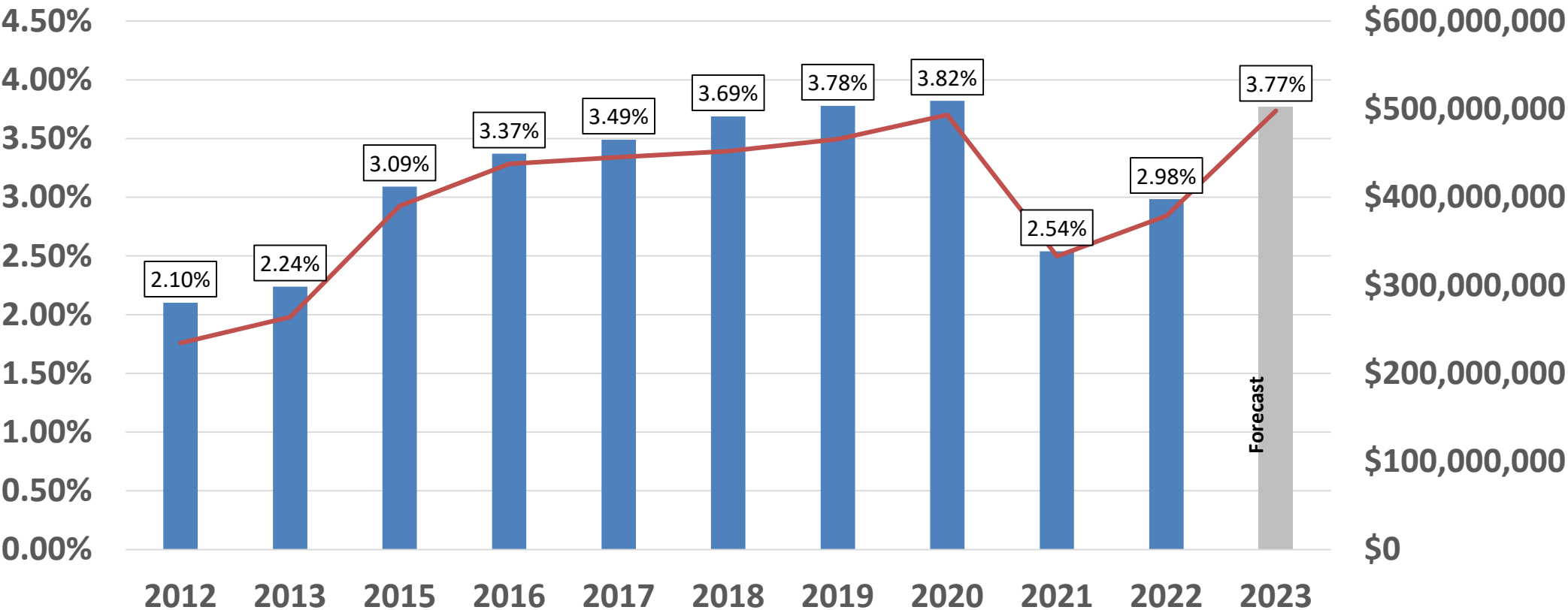


# UI Trust Fund – Monthly Balance, \$ in Millions



# UI Trust Fund Reserve Ratio and Fund Balance

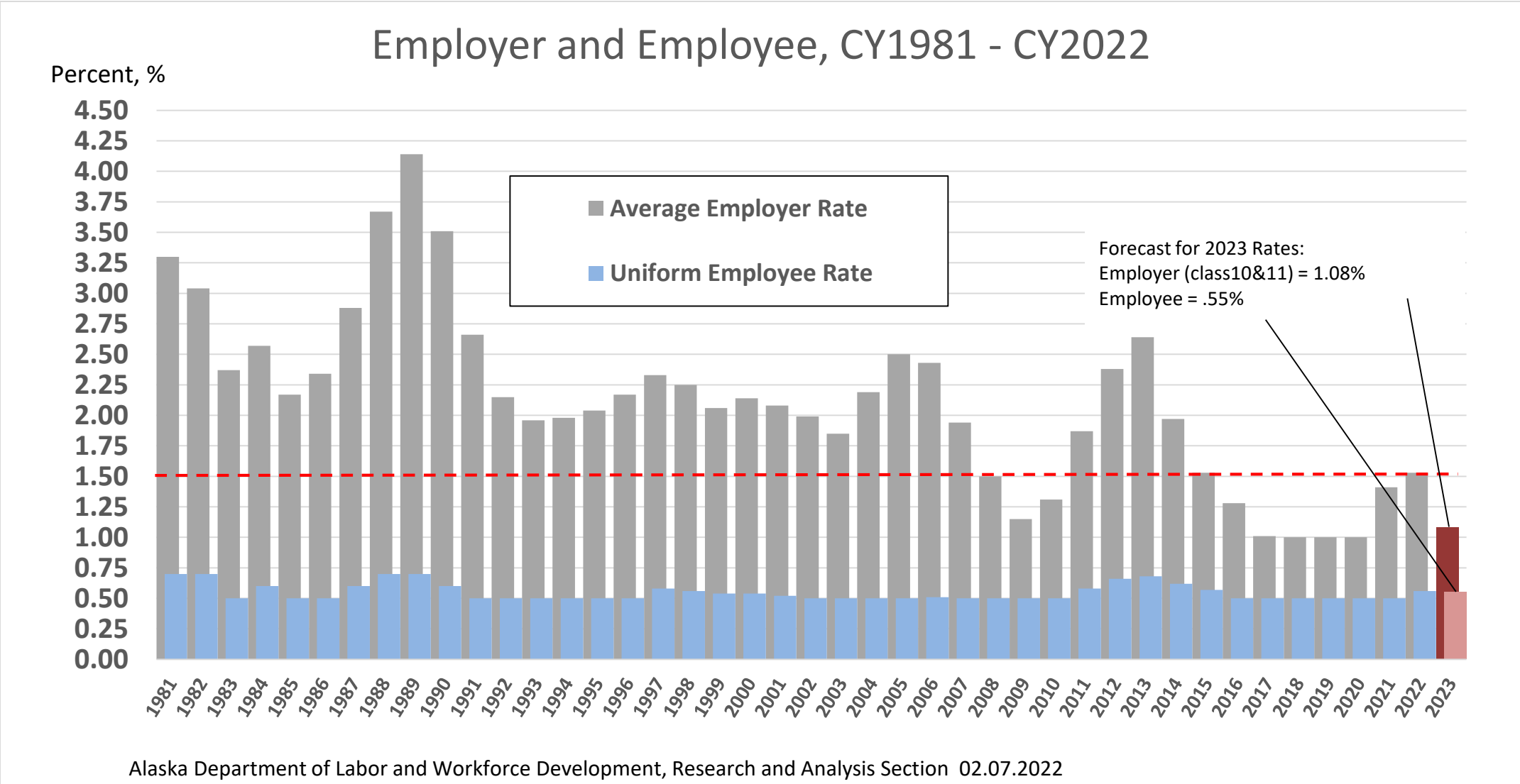
Sept 30th of prior CY reflected



Note: Sep. 30th values are presented here as that date is designated as the balance to be used for annual UI tax rate calculations.

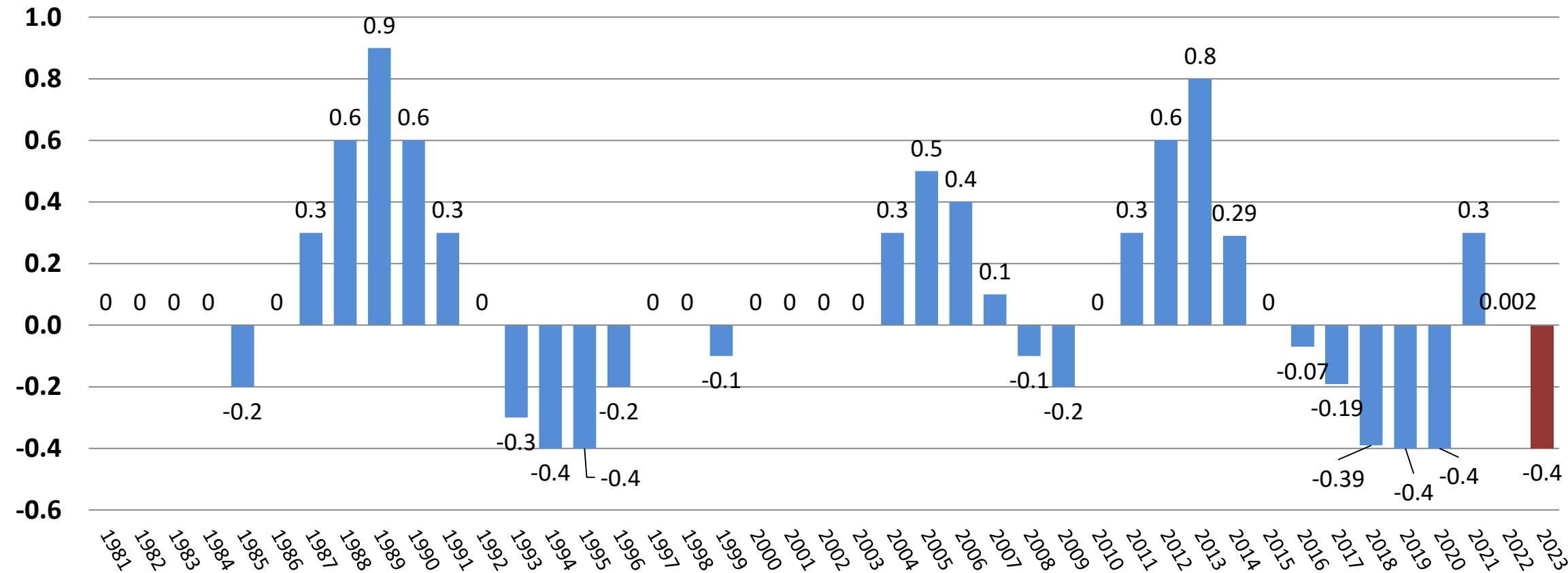


# UI Contribution Rates



# UI Solvency Rate 1981-2022

Surcharge/Credit,  
Rate %



Alaska Department of Labor and Workforce Development, Research and Analysis Section 2.07.2022



# PREPARING ALASKANS FOR THE JOBS OF TODAY—AND TOMORROW

**Dr. Tamika L. Ledbetter, Commissioner**

Email: [Commissioner.Labor@Alaska.gov](mailto:Commissioner.Labor@Alaska.gov)

Phone: (907) 269-7485

**Dan DeBartolo, Administrative Services Director**

Email: [Dan.DeBartolo@Alaska.gov](mailto:Dan.DeBartolo@Alaska.gov)

Phone: (907) 465-5984

For Constituent and Legislative Inquiries:

**Cathy Munoz, Deputy Commissioner**

Email: [Cathy.Munoz@Alaska.gov](mailto:Cathy.Munoz@Alaska.gov)

Phone: (907) 465-2702

(907) 957-8737

