

**To:** Members, Senate Finance Committee  
**From:** Steve Williams, CEO  
**Date:** 2/3/2022  
**Re:** Follow up to 1/27/22 Presentation

## MEMO

On behalf of the Trust, thank you for the opportunity on January 27, 2022 to present before the Senate Finance Committee and to provide an update on Trust finances and our work on behalf of beneficiaries.

In response to questions from the committee during the Trust's presentation I offer the following information. If members would like additional information, please reach out to our offices.

### 1) Provide an update on the performance of each Trust-owned commercial real estate property. (Sen. Wilson & Sen. Stedman)

The Trust manages its commercial real estate assets as a portfolio. Below is a table that has information about each of the Trust's seven properties.

Project	Street Address	City & State	Occupancy Rate	Net Cash Flow YTD 2022 (1)	Appraised Value (2)	Equity Build (3)
Cordova	2600 Cordova Street	Anchorage, AK	100%	\$93,584	\$4,575,000	-\$325,000
Commercial Drive	2618 Commercial Drive	Anchorage, AK	100%	\$69,080	\$3,120,000	\$1,258,252
Washington Parks	1111 Israel Road	Tumwater, WA	100%	\$115,902	\$15,687,523	\$2,803,192
Rulon White	1973 N. Rulon White Blvd.	Ogden, UT	100%	\$374,454	\$21,876,226	\$11,307,604
Promontory Point	2420 & 2500 Ridgpoint Dr.	Austin, TX	100%	\$101,815	\$18,070,379	\$3,585,613
Amber Oaks	9601 Amberglen Blvd.	Austin, TX	66% (4)	-\$19,275 (4)	\$24,516,484	\$4,500,876
North Park	17319 San Pedro Avenue	San Antonio, TX	52% (5)	-\$46,366 (5)	\$14,050,000	\$1,710,091
<b>Portfolio Total</b>			<b>84%</b>	<b>\$754,836</b>	<b>\$101,895,612</b>	<b>\$24,840,628</b>

(1) Year-to-Date Fiscal Year 2022 (six months)

(2) As of Year-End Fiscal 2021 per appraisal/BOV.

(3) Equity as of Year-End Fiscal 2021 less initial equity.

(4) Finalizing new lease covering 34% of the building; operating at a loss solely due to lease-up costs associated with new tenants.

(5) Negotiating two LOI's covering 32% of the project; monthly cash flows are now positive after refinancing with year-to-date results lagging.

### 2) Describe how the Trust determines what income earned from Trust lands is spendable income. (Sen. Hoffman)

The Trust's spendable income and principal income is determined by statute and regulation. Spendable income consists of 15% of revenue from timbers sales, and 100% of revenue from

interest and fees on land sale contracts, rents and other revenues from the temporary use of Trust land, bonus bids, and, under certain circumstances, the recovery of spendable earnings invested in development or improvement of Trust lands.

Principal income consists of revenue generated from land sales, royalties on coal, oil, gas, minerals and materials, permanent easements, and 85% of timber sales.

**3) Please clarify your transfer protocol to Trust principal. What is the Trust's process for transferring assets to principal? (Sen. Stedman)**

The Trust transfers assets to the corpus under two circumstances: the transfer of principal revenue derived from Trust land and the transfer of earnings reserves for the purpose of inflation proofing.

The processes for each are outlined below:

Trust Land Office (TLO) Principal Income: It is the policy of the Trust to transfer funds to the corpus no less frequently than on a quarterly basis. The decision on the amount and timing is made by the Chief Financial Officer once Trustees, at their November Board Meeting, accept the audited financial statements of the prior year and review legacy obligations related to Trust land development. In FY22 to date, these transfers have been made monthly.

Transfers to the corpus for inflation proofing: Trustee decisions to transfer budget reserves to the corpus are guided by statute and the Trust's Asset Management Policy Statement. The current procedure is if, at year-end, spendable budget reserves exceed 400% of the fiscal year's payout, Trustees will consider the permanent transfer of the excess to the corpus.

Since the Trust's presentation to the committee in February 2021, \$76.3MM of budget reserves have been transferred to the corpus for the purpose of inflation proofing.

**4) We pledged to share information about how the Trust supports the Alaska Psychiatric Institute (API). (Sen. von Imhof)**

The Trust relies on a comprehensive budget development process. Trust budget recommendations are developed by Trust staff in consultation with our statutory advisors, stakeholders, and beneficiaries. The Trust budget is considered and approved by the full board of trustees, then transmitted to governor and the Legislative Budget and Audit committee by the 15<sup>th</sup> of September for the forthcoming fiscal year. In the Trust's approved FY23 budget, there is a \$300,000 (MHTAAR) increment for a mental health professionals off-site evaluations/legal competency restoration pilot project that was developed in collaboration with the Department of Health and Social Services (DHSS).

The Trust has a history of funding efforts and initiatives at API that have been developed collaboratively with the leadership at API and DHSS. Following is a list of Trust funded efforts at API in the last five fiscal years:

<b>Project Title</b>	<b>Name</b>	<b>Grant Amount</b>
Mental Health Professionals Off-Site Evaluations (FY23)	DHSS - Department Support Services	\$300,000
Statewide Designation, Evaluation, Stabilization & Treatment Coordinator (FY23)	DHSS - Department Support Services	\$75,000
SHARP 3 Contract(s) at the Alaska Psychiatric Institute (FY22)	Alaska Psychiatric Institute	\$255,150
Statewide Designation, Evaluation, Stabilization & Treatment Coordinator (FY22)	DHSS - Department Support Services	\$75,000
Mental Health Professionals Off-Site Evaluations (FY22)	DHSS - Department Support Services	\$300,000
Transition from Alaska Psychiatric Institute (FY22)	Nettie's Care Coordination	\$10,210
API Capital Improvements (FY21)	Alaska Psychiatric Institute	\$300,000
Statewide Designation, Evaluation, Stabilization & Treatment Coordinator (FY21)	DHSS - Department Support Services	\$75,000
Contract for Increased Forensic Competency Evaluation Capacity (FY19)	Alaska Psychiatric Institute	\$150,000
Transition from Alaska Psychiatric Institute (FY19)	REACH, Inc.	\$50,138

**Total    \$1,590,498**

In addition to financial support, the Trust is very engaged on multiple levels with API and DHSS. These collaborations are focused on improved beneficiary care, safety of staff and patients served, quality of care, and access to psychiatric evaluation and stabilization. The Trust:

- serves on the Governance Board for API;
- works closely with API and DHSS to assist with supports necessary for complicated and complex care discharge needs; and
- works collaboratively with API to address challenging workforce issues.

**5) Please share more detail about the Homeless Assistance Program (HAP). (Sen. Wielechowski)**

The Homeless Assistance Program (HAP) is funded by the Alaska Housing Finance Corporation (AHFC) and Alaska Mental Health Trust funds and administered by AHFC.

Funds are awarded competitively to agencies (not private individuals) that provide emergency or transitional housing and/or services to prevent homelessness or rapidly re-house those who have been displaced. HAP serves all populations including youth under 18, youth 18-24, families, veterans and single adults.

Preventing homelessness, much like preventing injury or illness, not only provides better outcomes for individuals, but is the most effective, efficient, and economical approach to addressing homelessness. The funds can be used to prevent eviction, provide utility assistance, fix a car that is needed for employment and meet other critical needs to ensure a person can continue their existing tenancy.

HAP supported rapid re-housing rapidly connects families and individuals experiencing homelessness to permanent housing through a tailored package of assistance that may include the use of time-limited financial assistance and targeted supportive services. Rapid rehousing programs help families and individuals living on the streets or in emergency shelters solve the practical and immediate challenges to obtaining permanent housing while reducing the amount of time they experience homelessness, avoiding a near-term return to homelessness, and linking to community resources that enable them to achieve housing stability in the long-term.

[Alaska Housing Finance Corporation :: Homeless Assistance Program \(HAP\) \(ahfc.us\)](https://ahfc.us)

**6) Please provide a list of communities, along with amounts, of housing/homelessness programs that have received Trust funding. (Sen. Hoffman)**

Attached is a spreadsheet that details all Trust grants in the areas of housing and homelessness in the last ten fiscal years.

**7) Following are examples of how the Trust is supporting communities off the road system in addressing homelessness. (Sen. Hoffman)**

Some examples of support the Trust has provided for efforts impacting communities off the road system/outside population centers include providing funding to:

- Bethel Community Services for a site evaluation for a homeless shelter
- Bethel Winter House to support the establishment of a local homeless shelter
- Nome Community Center for housing first permanent supportive housing planning
- Sitka Homeless Coalition to obtain cold weather shelter space
- Yakutat Tlingit Tribe to build a domestic violence shelter
- Alaska Legal Services Corporation for legal services to prevent eviction (statewide)
- Alaska Housing and Homeless Coalition Advocacy Day project to facilitate training and idea exchange between housing and homeless services providers (statewide)
- The Trust supports a Technical Assistance contract that provided partners with consultative services such as community planning, housing project concept development, and grant application assistance. In 2020 through 2022, Trust technical assistance has supported:
  - the Bethel Homeless Coalition;
  - the Nome Homeless Coalition;
  - the Sitka Homeless Coalition; and
  - a Ketchikan project that is currently in discussion.

In addition, the Trust partners with AHFC to fund the HAP (see question 5 above) and the Special Needs Housing Grant (SNHG) programs that serve communities across the state. This partnership includes an AHFC funded Rural Housing Coordinator in Nome and was recently expanded to include a Rural Housing Coordinator in Kotzebue. Work is expected to continue with the Rural Housing Coordinators to expand communication and understanding of the unique housing needs in rural Alaska.

**8) Has the Trust revoked any grants in recent years? (Sen. Wilson)**

No, the Trust has not suspended or revoked a grant award to date. As part of our grant administration process, each applicant is screened for organizational status and in our Trust grant database to check for any issues that would impact suitability (i.e. past grant compliance and appropriate use of Trust funds) for receiving a Trust grant. Our grants are monitored for compliance with specific conditions established for each project. Were the Trust to become aware of grantee misuse of Trust funds, or fraudulent activity that affected work supported through Trust funds, we would take appropriate action, potentially including the termination of the grant and the recovery of any misused funds.

**9) How much lands suitable for timber harvest does the Trust currently have in its land assets, particularly following the harvest of lands newly acquired by the Trust/USFS land exchange. Please also describe the size of the harvest opportunities. (Sen. Stedman)**

The total acreage of Trust lands with timber resources, which includes lands now in Trust ownership following the USFS land exchange, is 206,500 acres total. This includes: 100,000 acres in the Trust's northern region, 60,000 acres in the Trust's southcentral region, and 46,500 in the Trust's southeast region (Icy Bay – 18,000 acres, Prince of Wales – 17,000 acres, Revillagigedo – 11,500 acres).

Looking at the Trust's future timber supply, under the current timber sale contracts, and possible future contracts within the next 5-10 years, the Trust Land Office (TLO) anticipates approximately 160mmbf of timber harvest. At the completion of those contracts, there will be a pause in available harvestable timber. After this pause the TLO estimates there will be approximately 140mmbf of harvestable timber available for timber sale contracts by 2035.

The TLO has and continues to provide timber contracts for smaller scale operators across the state. The TLO is one of the primary suppliers of local wood for small scale operators for small mills, house logs, and firewood in Haines, Gustavus, and on Prince of Wales Island - with multiple contractors operating on Trust lands in these locations. The Trust also has provided smaller sales in its southcentral and northern regions for firewood sales and fuel reduction contracts. The TLO continues to encourage applications from small scale operators interested in the Trust's timber resources for use of Trust lands across the state.

**10) Is the Trust currently considering any other land exchanges? Please include the Shelter Cove area. (Sen. Wilson, Sen. Stedman)**

No, there are currently no lands slated to be exchanged. However, at the request of the Governor's Office the Trust Land Office identified 10 parcels of state lands adjacent to Trust lands that could be transferred to the Trust and significantly increase the value and reduce the cost of developing those lands. Attached are maps depicting the 10 parcels identified.

**11) We pledged to provide the Trust's statewide needs assessment report with the committee following Sen. Bishop's question relating to our assessment of beneficiary needs. (Sen. Bishop)**

In 2015, the Trust, in partnership with the Department of Health and Social Services Division of Behavioral Health (DBH), Alaska Native Tribal Health Consortium, and the Mat-Su Health Foundation completed a comprehensive assessment of Alaska's publicly funded behavioral health system. The full report, and regional data, may be found at:

<https://alaskamentalhealthtrust.org/alaska-mental-health-trust-authority/resources/behavioral-health-systems-assessment/>

The aim of this assessment was to inform decision-making at the regional and statewide levels, and to improve system functioning so that it can produce better outcomes for the people it serves. This assessment was built upon previous and ongoing efforts by DBH and others to assess the behavioral health system funded by the state of Alaska Medicaid and behavioral health funds. While it did not address specific investments needed to fund improvements in the system, it explored billing rates for services for a complete behavioral health continuum of care.

Since the report was published, the Trust has worked closely with DHSS and DBH on behavioral health systems reform and redesign. As part of this collaboration, the Trust has helped to fund and implement the Medicaid 1115 Behavioral Health Systems redesign demonstration waiver project. An important part of that work included the actuarial analysis of services, as well as discussions with DBH about the financial investment needed to support standing up services statewide.

The Trust is awaiting the 1115 demonstration project's conclusion and evaluation to determine the need for an updated comprehensive systems assessment of the Alaska behavioral health care system, and at that time could consider the larger costs of the system.

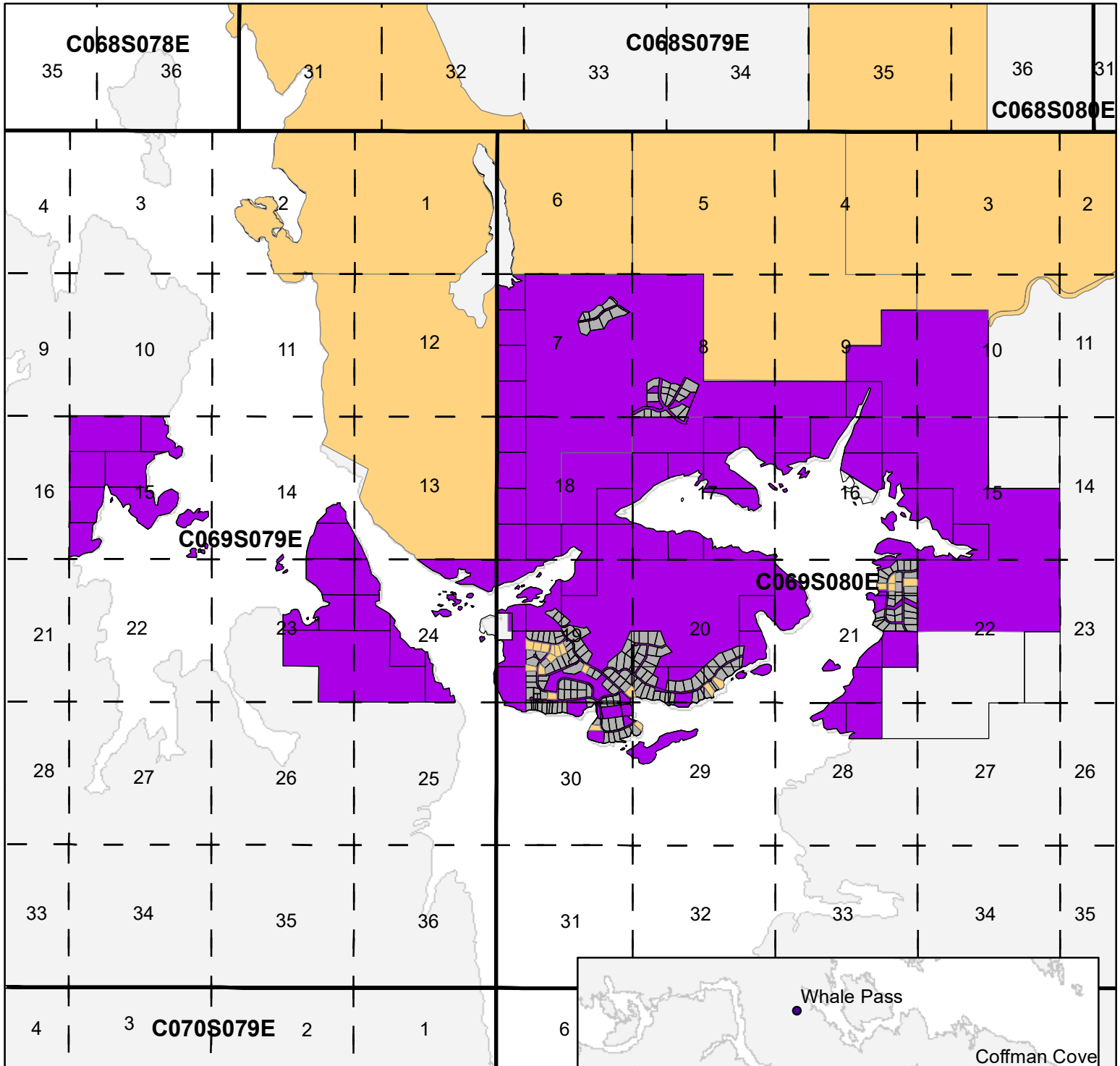
Alaska Mental Health Trust Authority Grants Supporting Housing and Homelessness FY13-22				
Project Title	Name	Grant Amount	Geographical Area Served	Fiscal Year
Bethel Winter House Shelter Facility Evaluation	Bethel Community Services	\$28,735	Bethel Census Area	2021
Bethel Permanent Supportive Housing Project	Bethel Community Services	\$50,000	Bethel Census Area	2022
Bethel Winter House Renovation	Bethel Winter House	\$150,000	Bethel Census Area	2021
YKHC Home and Community Based Services	Yukon-Kuskokwim Health Corporation	\$50,000	Bethel Census Area	2012
	<b>Bethel Census Area (4 Grants)</b>	<b>\$278,735</b>		
Public Affairs fund for Homelessness and Affordable Housing	Capital Community Broadcasting, Inc. (KTOO)	\$50,000	Juneau City and Borough	2014
Housing and Homelessness Services Coordinator	City and Borough of Juneau	\$110,000	Juneau City and Borough	2020
Housing and Homelessness Services Coordinator	City and Borough of Juneau	\$110,000	Juneau City and Borough	2021
Runaway and Homeless Youth Shelter and Rapid Rehousing	City and Borough of Juneau	\$75,000	Juneau City and Borough	2021
Juneau Cold Weather Shelter Operations	City and Borough of Juneau	\$30,000	Juneau City and Borough	2019
Housing and Homelessness Services Coordinator	City and Borough of Juneau	\$52,763	Juneau City and Borough	2019
Coordinated Street Outreach	City and Borough of Juneau	\$33,800	Juneau City and Borough	2021
Cold Weather Emergency Shelter	City and Borough of Juneau	\$16,425	Juneau City and Borough	2018
Housing and Homelessness Services Coordinator	City and Borough of Juneau	\$100,000	Juneau City and Borough	2018
Juneau Benefits Advocacy Project	Disability Law Center of Alaska	\$50,000	Juneau City and Borough	2019
Juneau Benefits Advocacy Project	Disability Law Center of Alaska	\$45,000	Juneau City and Borough	2020
Family Promise of Juneau Homelessness Prevention and Rapid Rehousing	Family Promises Of Juneau	\$150,000	Juneau City and Borough	2020
Family Promise of Juneau Homelessness Prevention and Rapid Rehousing	Family Promises Of Juneau	\$150,000	Juneau City and Borough	2020
Family Promise of Juneau Homelessness Prevention and Rapid Rehousing	Family Promises Of Juneau	\$150,000	Juneau City and Borough	2022
Vulnerability Index Survey 2019	Juneau Cooperative Christian Ministry	\$6,500	Juneau City and Borough	2019


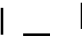



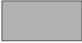

Project Title	Name	Grant Amount	Geographical Area Served	Fiscal Year
Housing First Planning and Construction Project Management	Juneau Cooperative Christian Ministry	\$50,000	Juneau City and Borough	2015
Outreach/Scattered Site Housing First Pilot	Juneau Cooperative Christian Ministry	\$25,000	Juneau City and Borough	2015
Outreach Coordinator/Housing Specialist Wellness Program	Juneau Cooperative Christian Ministry	\$10,000	Juneau City and Borough	2014
New Glory Hall facility	Juneau Cooperative Christian Ministry	\$200,000	Juneau City and Borough	2021
Juneau Housing First Collaborative	Juneau Housing First Collaborative	\$350,000	Juneau City and Borough	2016
Juneau Housing First Collective Evaluation Project	Juneau Housing First Collaborative	\$16,800	Juneau City and Borough	2018
Juneau Housing First Collaborative Phase 2	Juneau Housing First Collaborative	\$350,000	Juneau City and Borough	2019
Beds and Mattresses	Juneau Housing First Collaborative	\$28,000	Juneau City and Borough	2020
RFP for Juneau Senior Housing & Services Demand Study	Senior Citizen Support Services, Inc.	\$10,000	Juneau City and Borough	2014
Juneau Consolidated Rapid Re-Housing Project	St Vincent De Paul Society Diocesan Of Southeast Alaska Inc	\$25,000	Juneau City and Borough	2017
Parking lot reconstruction as part of Teal Street Shelter renovation	St Vincent De Paul Society Diocesan Of Southeast Alaska Inc	\$40,000	Juneau City and Borough	2022
Merger of St. Vincent de Paul and Housing First Inc.	St. Vincent de Paul Society of Juneau	\$27,000	Juneau City and Borough	2013
	<b>Juneau City and Borough (26 Grants)</b>	<b>\$2,261,288</b>		
Ketchikan Reentry Coalition Housing Project	Ketchikan Wellness Coalition	\$52,500	Ketchikan Gateway Borough	2021
	<b>Ketchikan Gateway Borough (1 Grant)</b>	<b>\$52,500</b>		
Homeless Shelter Remodel and Expansion	Brother Francis Shelter Kodiak Inc	\$75,000	Kodiak Island Borough	2013
	<b>Kodiak Island Borough (1 Grant)</b>	<b>\$75,000</b>		
My Home Nome	Nome Community Center Inc	\$4,635	Nome Census Area	2020
NEST Sober Housing - Housing First	Nome Emergency Shelter Team (NEST)	\$8,000	Nome Census Area	2014
NEST Supportive Housing	Nome Emergency Shelter Team (NEST)	\$20,000	Nome Census Area	2015
Supportive Housing for Trust Beneficiaries in Treatment	Nome Emergency Shelter Team (NEST)	\$48,600	Nome Census Area	2016

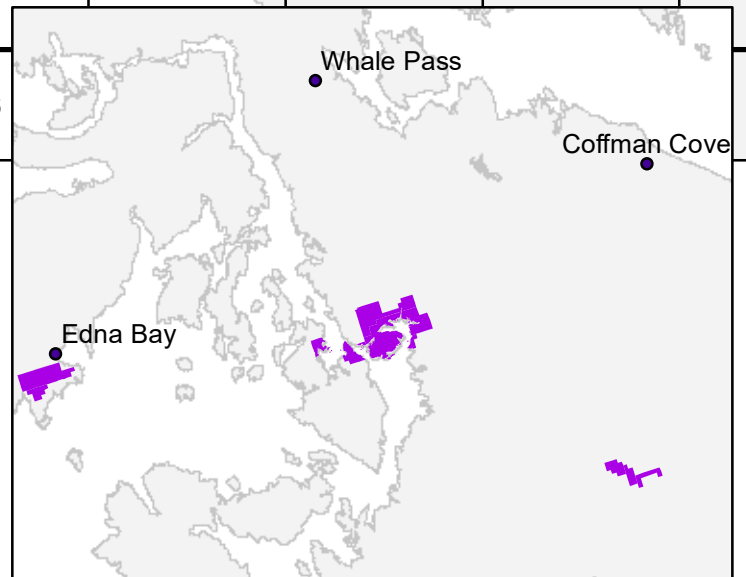
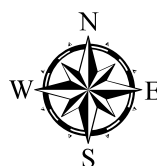
Project Title	Name	Grant Amount	Geographical Area Served	Fiscal Year
NEST 'Supportive Housing for Trust Beneficiaries in Treatment' - Extension	Nome Emergency Shelter Team (NEST)/Norton Sound Health Corporation Behavioral Health Services	\$22,500	Nome Census Area	2017
	<b>Nome Census Area (5 Grants)</b>	<b>\$103,735</b>		
Rural Housing Coordinator - NWAB	Alaska Housing Finance Corporation	\$135,000	Northwest Arctic Borough	2022
	<b>Northwest Arctic Borough (1 Grant)</b>	<b>\$135,000</b>		
Men's Winter Night Shelter in Sitka	Sitka Homeless Coalition	\$18,500	Sitka	2020
	<b>Sitka (1 Grant)</b>	<b>\$18,500</b>		
Alaska Conference on Housing and Homelessness	Alaska Coalition on Housing & Homelessness	\$50,000	Statewide	2013
Alaska Conference on Housing and Homelessness	Alaska Coalition on Housing & Homelessness	\$25,000	Statewide	2014
Alaska Coalition on Housing and Homelessness Coordinator Position	Alaska Coalition on Housing & Homelessness	\$50,000	Statewide	2016
Alaska Conference on Housing and Homelessness	Alaska Coalition on Housing & Homelessness	\$50,000	Statewide	2016
Alaska Conference on Housing and Homelessness	Alaska Coalition on Housing & Homelessness	\$50,000	Statewide	2015
Alaska Coalition on Housing and Homelessness Coordinator Position	Alaska Coalition on Housing & Homelessness	\$50,000	Statewide	2016
Alaska Conference on Housing and Homelessness	Alaska Coalition on Housing & Homelessness	\$50,000	Statewide	2016
Alaska Housing Advocacy Day	Alaska Coalition on Housing & Homelessness	\$35,000	Statewide	2020
Flexible Special Needs Housing	Alaska Housing Finance Corporation	\$150,000	Statewide	2019
Alaska Coalition on Housing and Homelessness Rural Capacity Expansion	Alaska Housing Finance Corporation	\$135,000	Statewide	2019
Homeless Assistance Program - Capital	Alaska Housing Finance Corporation	\$850,000	Statewide	2014
Homeless Assistance Program - Capital	Alaska Housing Finance Corporation	\$850,000	Statewide	2015
Homeless Assistance Program - Capital	Alaska Housing Finance Corporation	\$850,000	Statewide	2016
Homeless Assistance Program - Capital	Alaska Housing Finance Corporation	\$850,000	Statewide	2017
Homeless Assistance Program - Capital	Alaska Housing Finance Corporation	\$950,000	Statewide	2018
Homeless Assistance Program - Capital	Alaska Housing Finance Corporation	\$950,000	Statewide	2019
Discharge Incentive Grants	Alaska Housing Finance Corporation	\$100,000	Statewide	2018
Discharge Incentive Grants	Alaska Housing Finance Corporation	\$100,000	Statewide	2019

Project Title	Name	Grant Amount	Geographical Area Served	Fiscal Year
Housing Conference Scholarships	Alaska Housing Finance Corporation	\$10,000	Statewide	2018
Flexible Special Needs Housing	Alaska Housing Finance Corporation	\$150,000	Statewide	2019
Special Needs Housing Grant & Statewide Homeless Coalition Capacity Development	Alaska Housing Finance Corporation	\$200,000	Statewide	2019
Alaska Coalition on Housing and Homelessness Rural Capacity Expansion	Alaska Housing Finance Corporation	\$135,000	Statewide	2019
Special Needs Housing Grant & Statewide Homeless Coalition Capacity Development	Alaska Housing Finance Corporation	\$200,000	Statewide	2019
Homeless Assistance Program - Capital	Alaska Housing Finance Corporation	\$950,000	Statewide	2020
Homeless Assistance Program - Capital	Alaska Housing Finance Corporation	\$950,000	Statewide	2021
Discharge Incentive Grants	Alaska Housing Finance Corporation	\$100,000	Statewide	2020
Discharge Incentive Grants - Capital	Alaska Housing Finance Corporation	\$100,000	Statewide	2021
Special Needs Housing Grant & Rural Housing Catalyst Fund	Alaska Housing Finance Corporation	\$200,000	Statewide	2021
Special Needs Housing Grant - Capital	Alaska Housing Finance Corporation	\$200,000	Statewide	2021
Rural Housing Coordinator - New Region	Alaska Housing Finance Corporation	\$135,000	Statewide	2022
Homeless Assistance Program - Capital	Alaska Housing Finance Corporation	\$950,000	Statewide	2022
Discharge Incentive Grants	Alaska Housing Finance Corporation	\$100,000	Statewide	2022
Special Needs Housing Grant - Capital	Alaska Housing Finance Corporation	\$200,000	Statewide	2022
Legal Resources for Trust Beneficiaries Including Housing Support	Alaska Legal Services Corporation	\$50,000	Statewide	2020
Legal Resources for Trust Beneficiaries Including Housing Support	Alaska Legal Services Corporation	\$50,000	Statewide	2019
Legal Resources for Trust Beneficiaries Including Housing Support	Alaska Legal Services Corporation	\$50,000	Statewide	2016
Legal Resources for Trust Beneficiaries Including Housing Support	Alaska Legal Services Corporation	\$50,000	Statewide	2018
Legal Resources for Trust Beneficiaries Including Housing Support	Alaska Legal Services Corporation	\$50,000	Statewide	2017
Legal Resources for Trust Beneficiaries Including Housing Support	Alaska Legal Services Corporation	\$50,000	Statewide	2013
Legal Resources for Trust Beneficiaries Including Housing Support	Alaska Legal Services Corporation	\$50,000	Statewide	2013
Legal Resources for Trust Beneficiaries Including Housing Support	Alaska Legal Services Corporation	\$50,000	Statewide	2014
Legal Resources for Trust Beneficiaries Including Housing Support	Alaska Legal Services Corporation	\$50,000	Statewide	2016

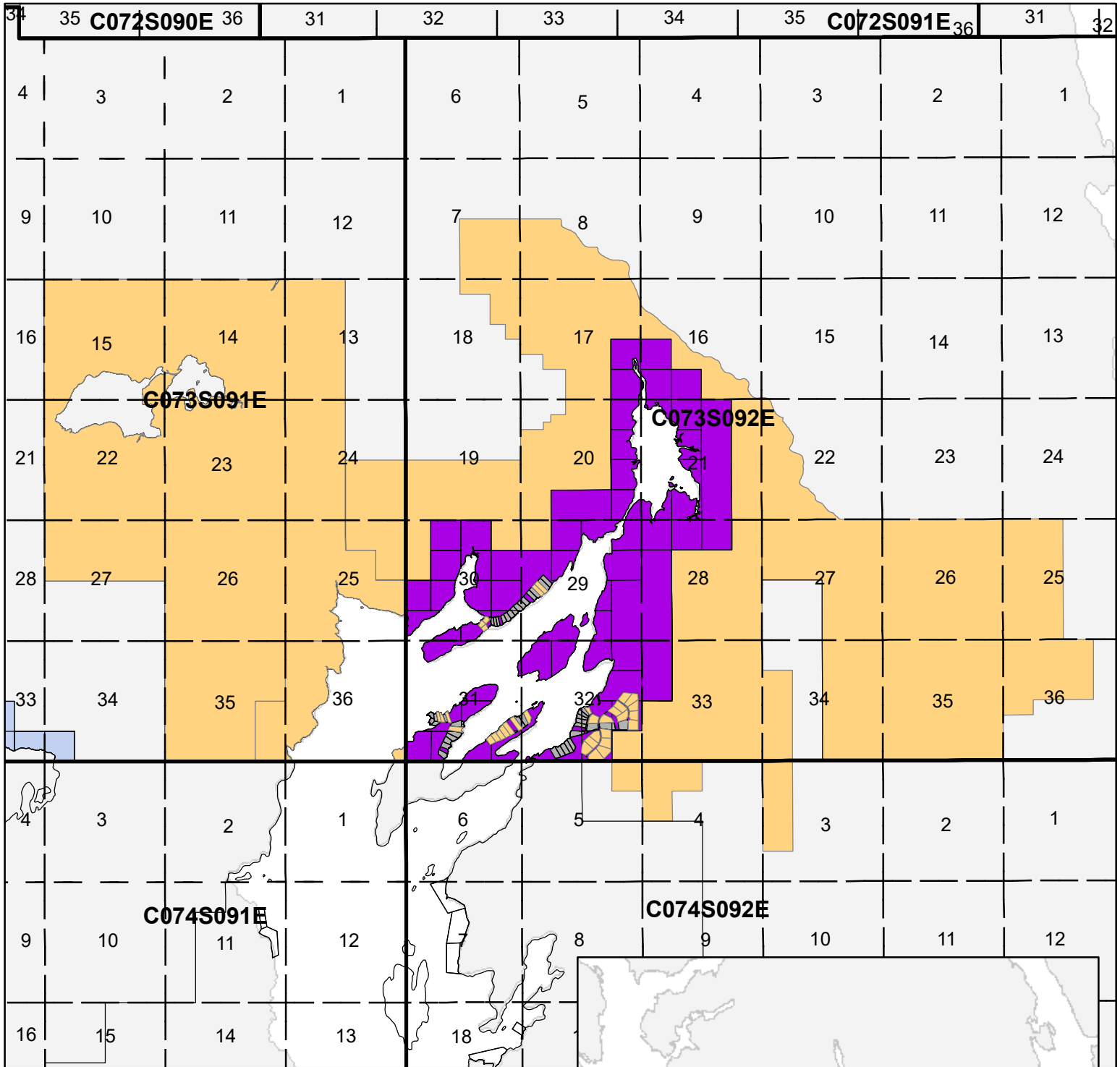
Project Title	Name	Grant Amount	Geographical Area Served	Fiscal Year
Legal Resources for Trust Beneficiaries Including Housing Support	Alaska Legal Services Corporation	\$50,000	Statewide	2021
Assisted Living Home Transition Program	Alaska Statewide Independent Living Council, Inc.	\$250,000	Statewide	2016
Behavioral Health Housing and Assisted Living Technical Assistance	Anchorage Community Mental Health Services, Inc dba Alaska Behavioral Health	\$150,000	Statewide	2014
Behavioral Health Housing and Assisted Living Technical Assistance	Anchorage Community Mental Health Services, Inc dba Alaska Behavioral Health	\$150,000	Statewide	2012
Behavioral Health Housing and Assisted Living Technical Assistance	Anchorage Community Mental Health Services, Inc dba Alaska Behavioral Health	\$150,000	Statewide	2013
	<b>Statewide Focus (55 Grants)</b>	<b>\$11,925,000</b>		










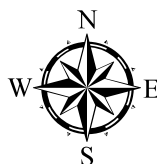
-  Township
-  Section
-  Adjacent State Land Selection
-  Mental Health Parcel
-  State Land (TA & PA)
-  State Lands Conveyed
-  Municipal Entitlement



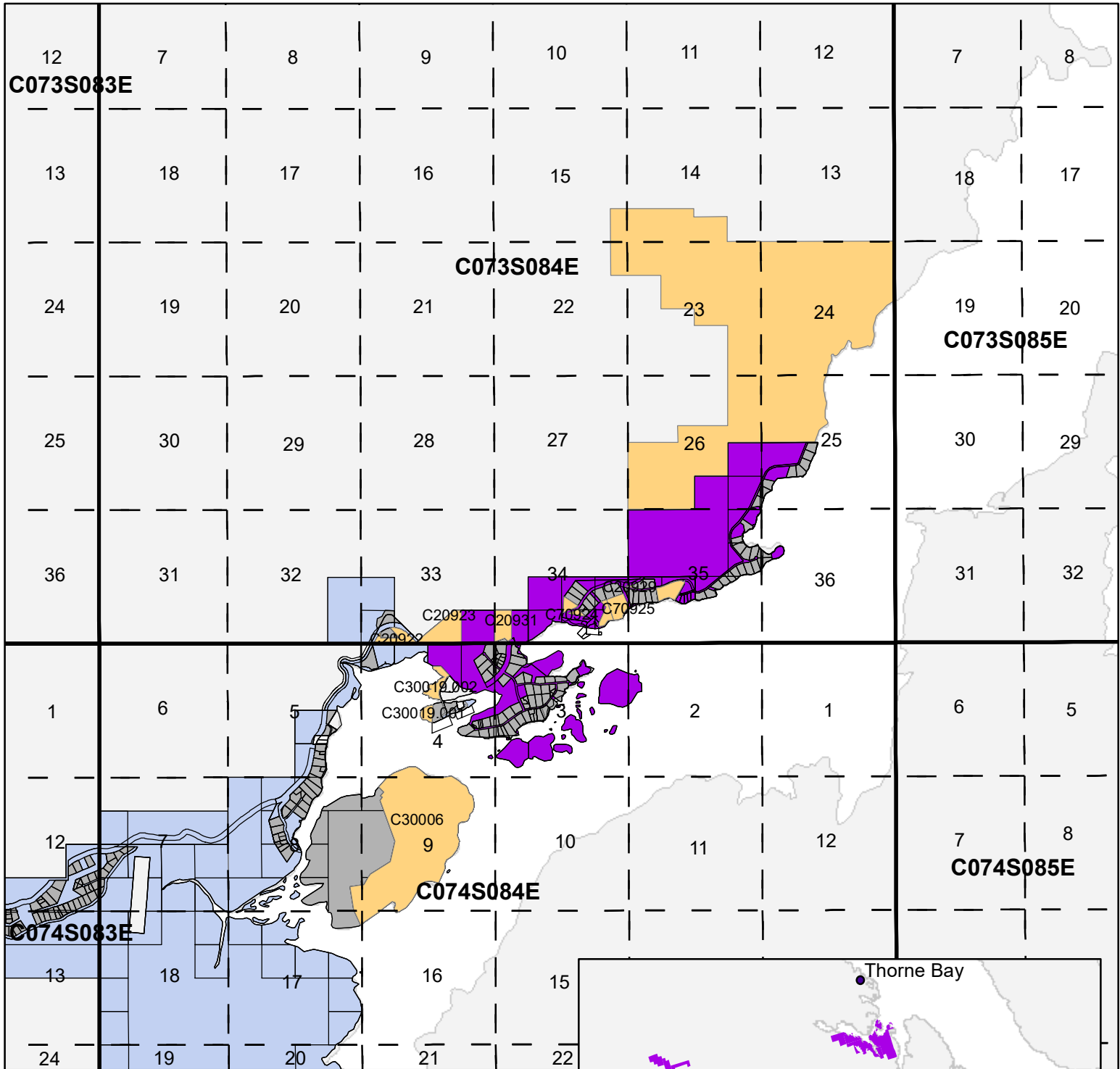
# Upper George Inlet



-  Township
-  Section
-  Adjacent State Land Selection
-  Mental Health Parcel
-  State Land (TA & PA)
-  State Lands Conveyed
-  Municipal Entitlement







Township



Section



Adjacent State Land Selection



Mental Health Parcel



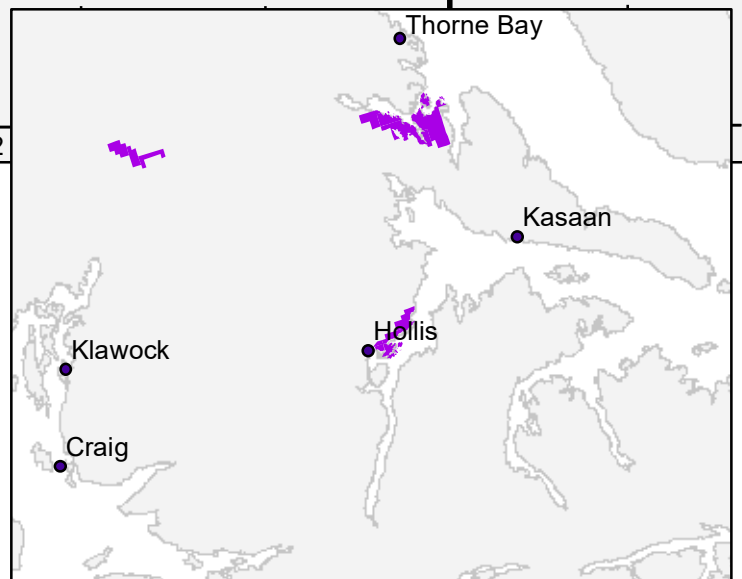
State Land (TA & PA)



State Lands Conveyed

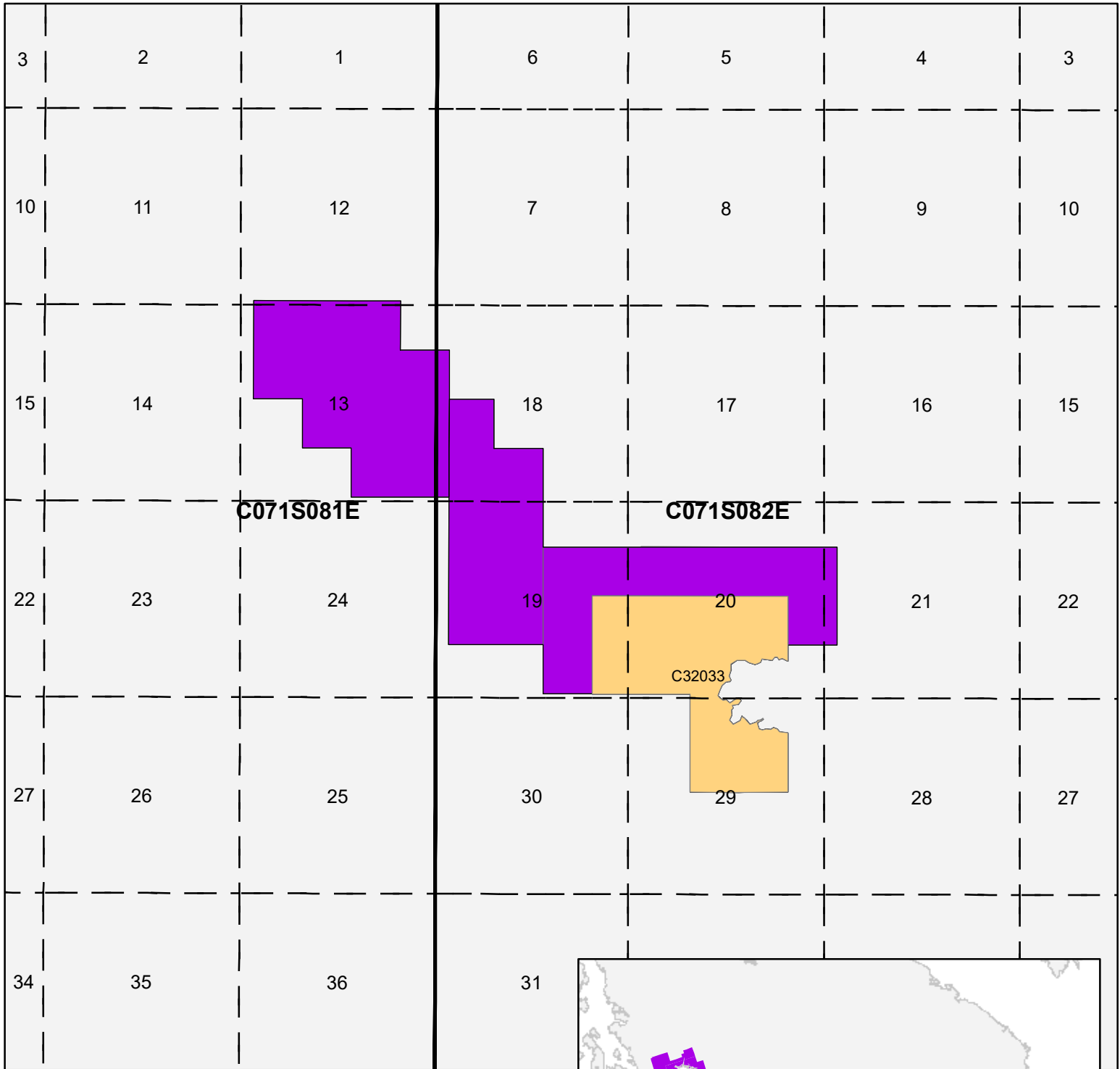


Municipal Entitlement





# Control Lake POW



Township



Section



Adjacent State Land Selection



Mental Health Parcel



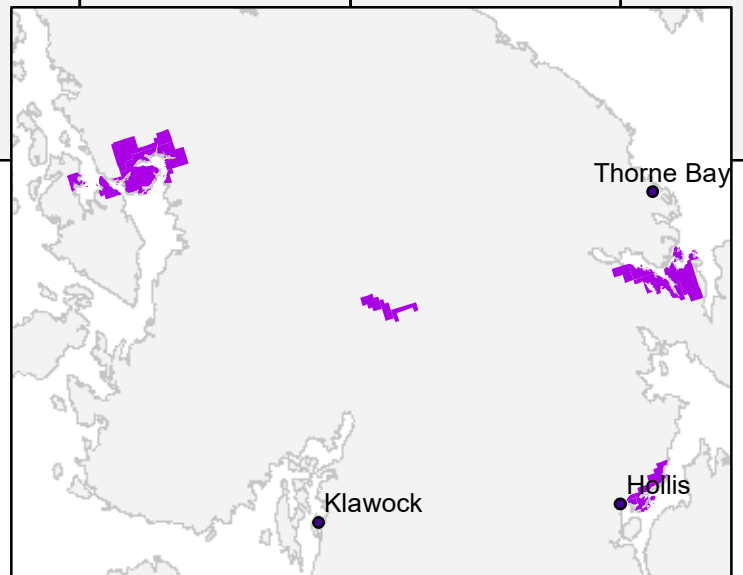
State Land (TA & PA)

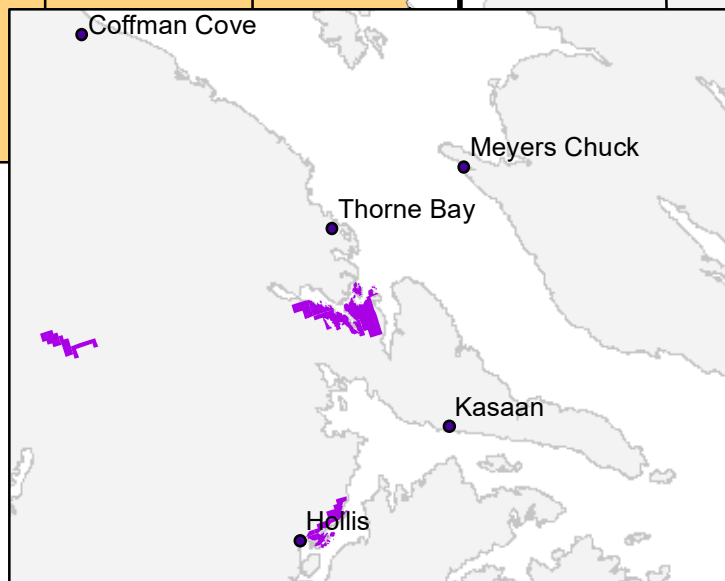


State Lands Conveyed



Municipal Entitlement

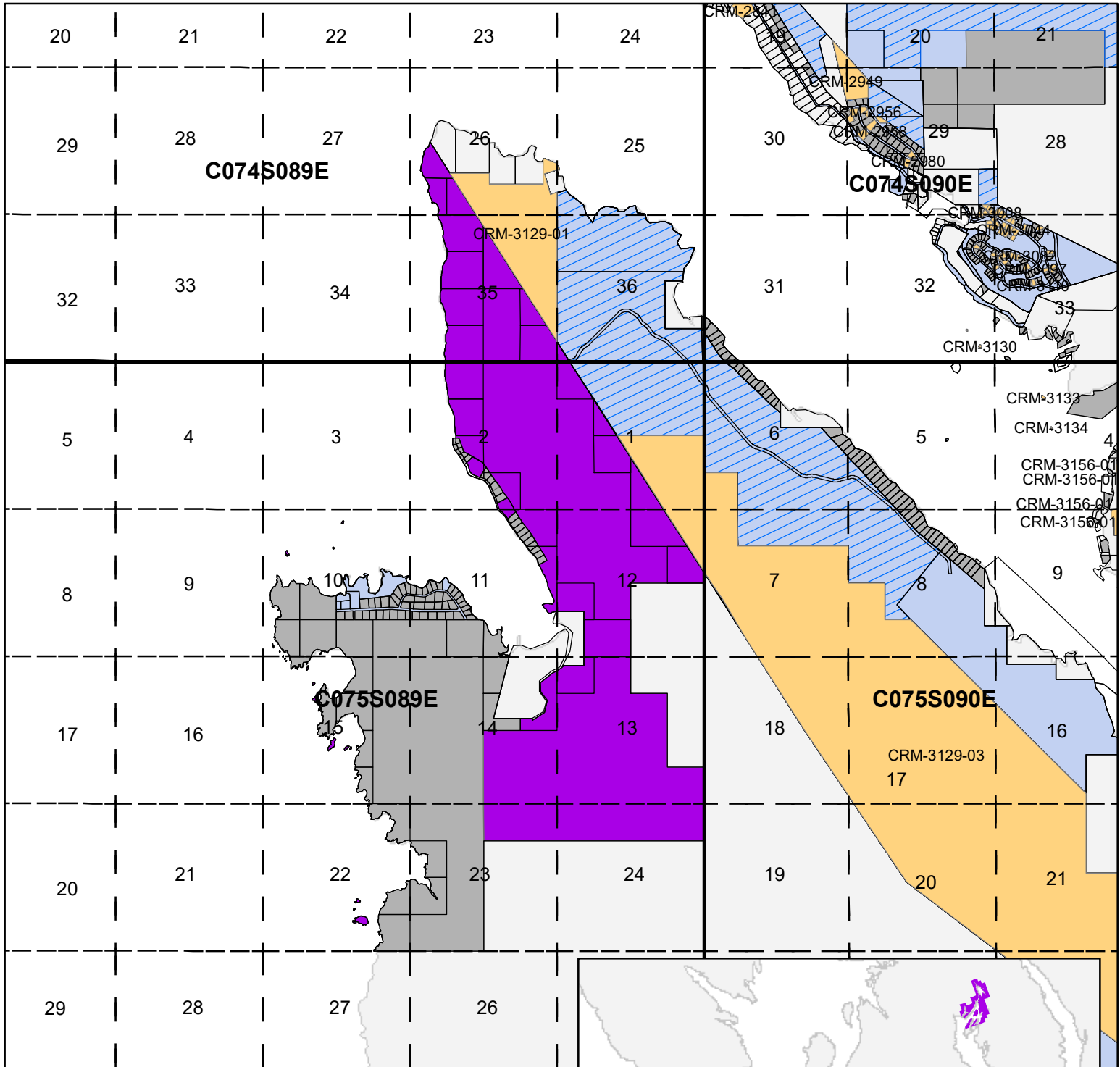




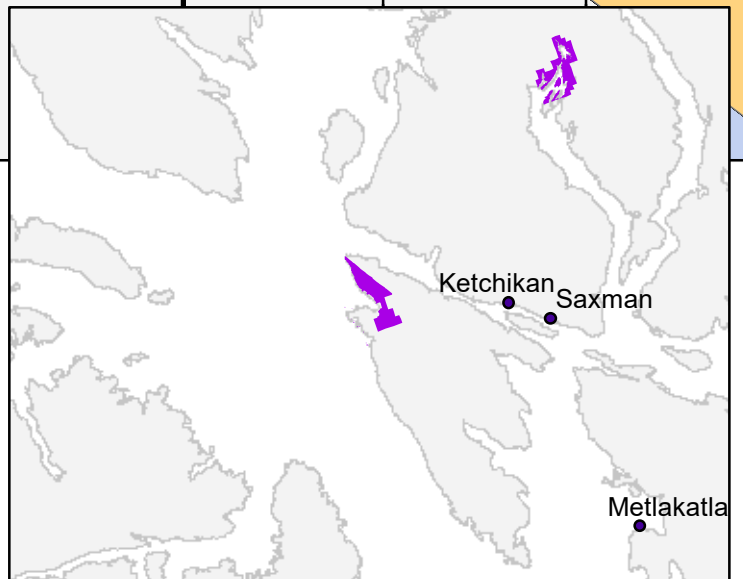
-



# Gravina Island

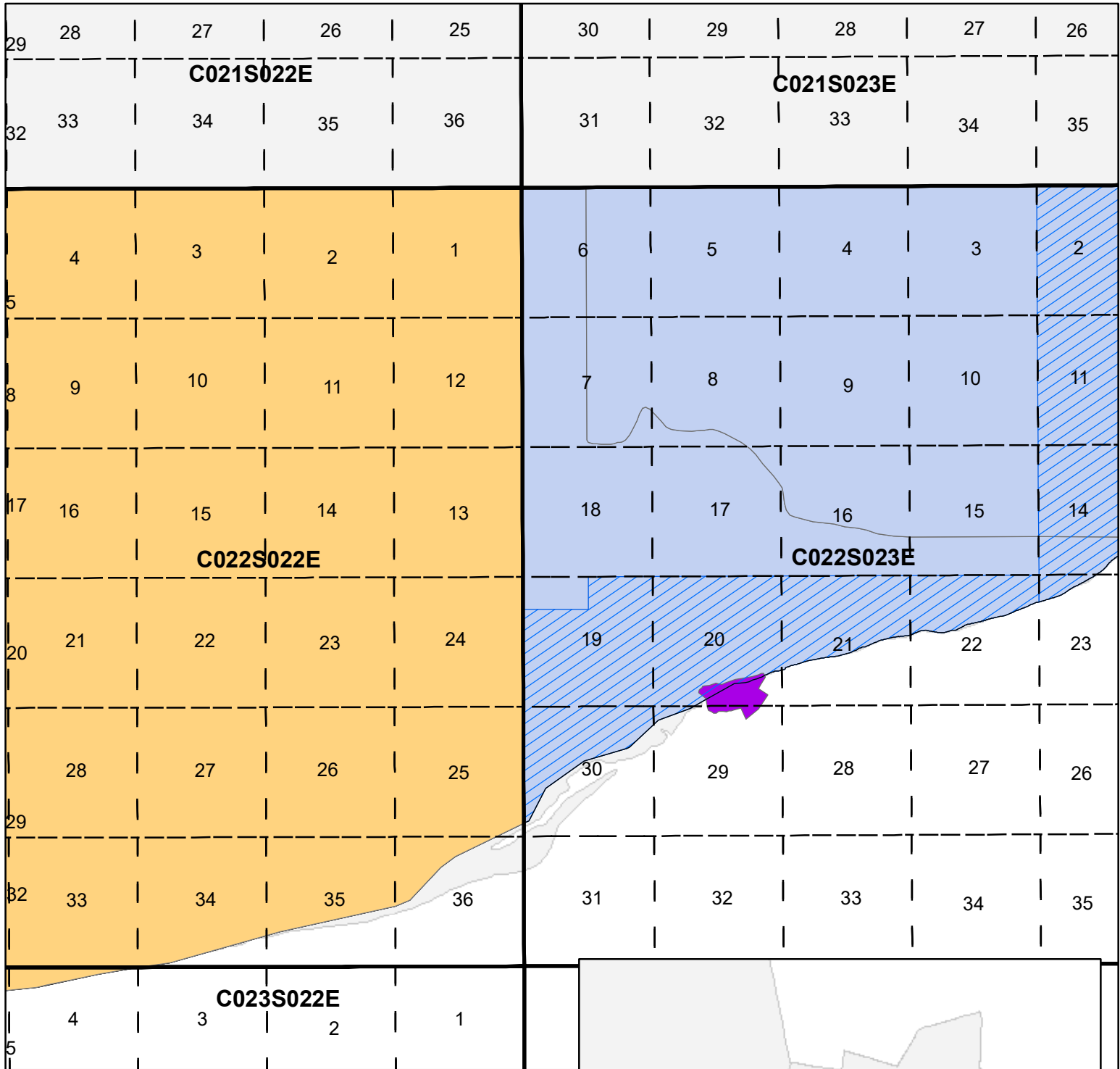


- Township
- Section
- Mental Health Parcel
- Adjacent State Land Selection
- State Land (TA & PA)
- State Lands Conveyed
- Municipal Entitlement





# Icy Cape Area



Township



Section



Adjacent State Land Selection



Mental Health Parcel



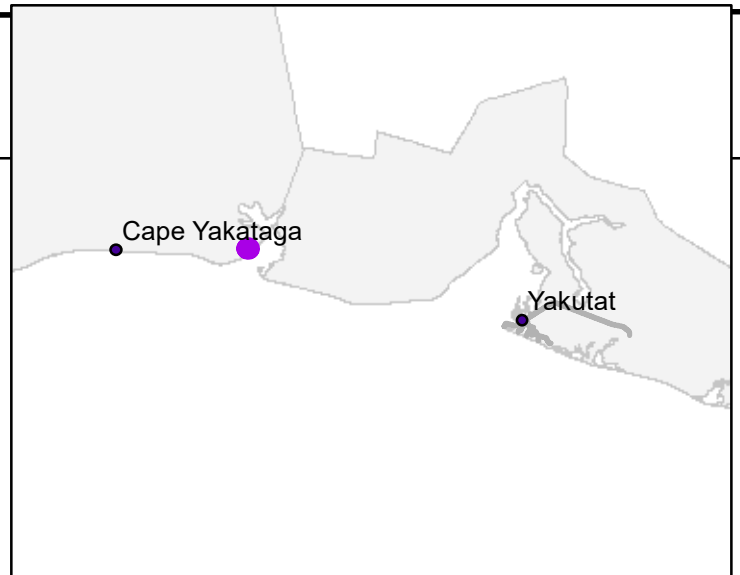
State Land (TA & PA)

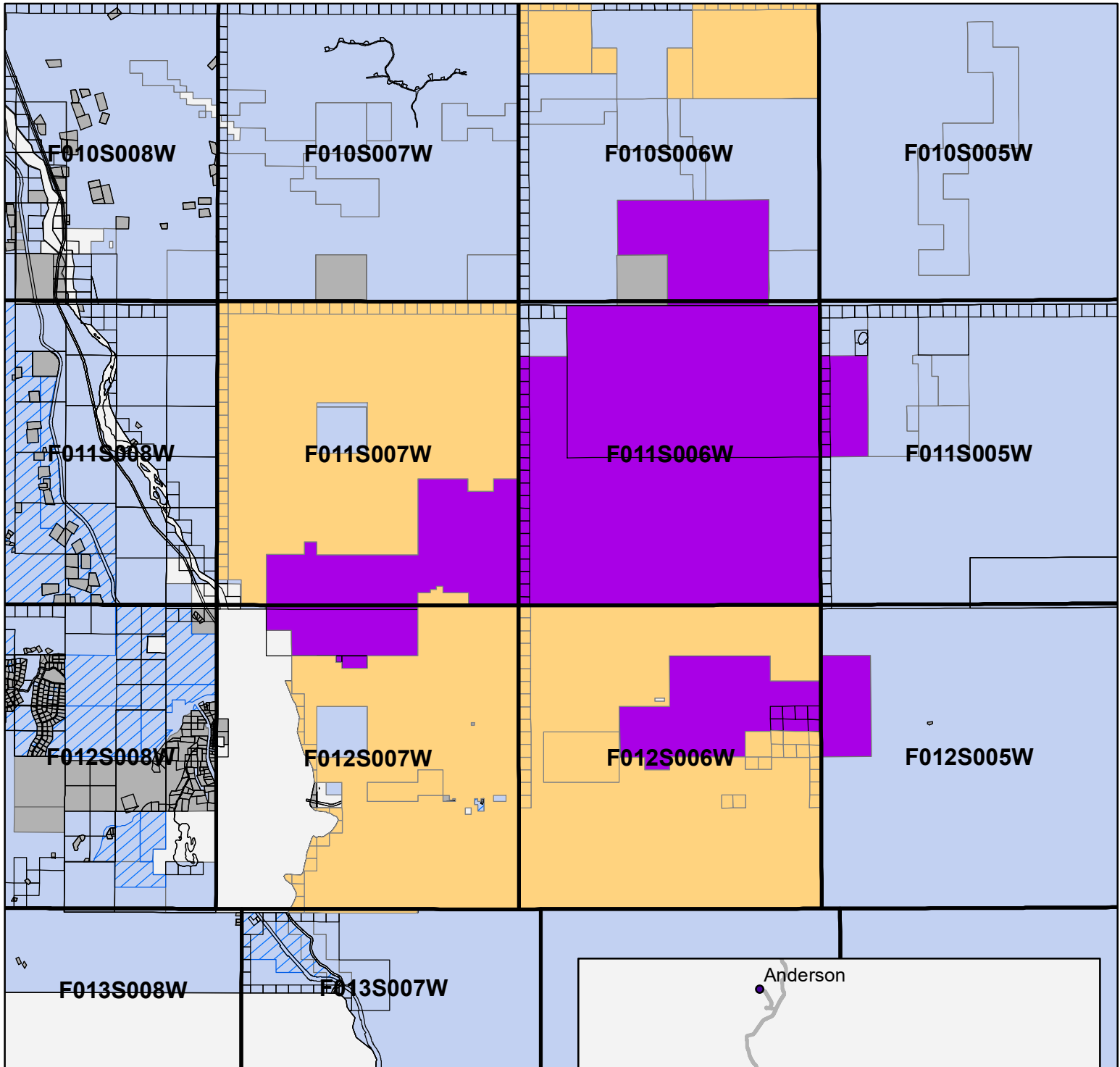


State Lands Conveyed

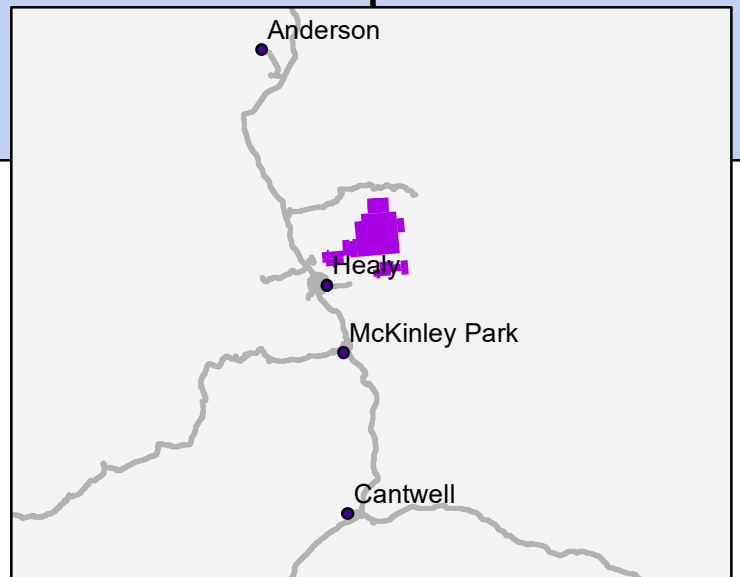


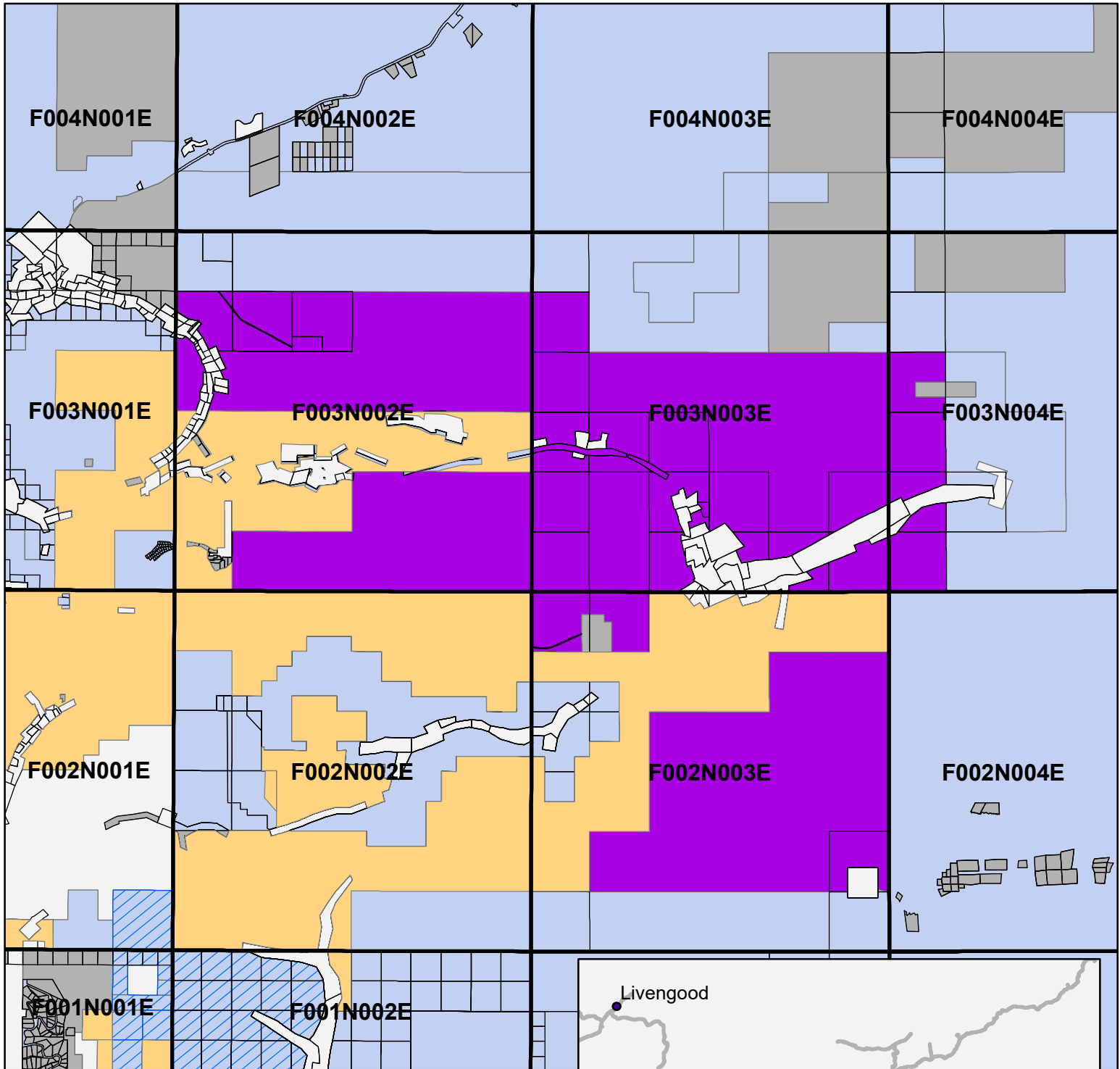
Municipal Entitlement





- Township
- Adjacent State Land Selection
- Mental Health Parcel
- State Land (TA & PA)
- State Lands Conveyed
- Municipal Entitlement





- Township
- Adjacent State Land Selection
- Mental Health Parcel
- State Land (TA & PA)
- State Lands Conveyed
- Municipal Entitlement

