



# *Improving Educational Outcomes for Alaska Students*



**Dr. Lisa S. Parady**

Executive Director,  
Alaska Council of School Administrators

Senate Education Committee  
February 1, 2021



*Leading Together for Alaska's Students*

# Alaska Council of School Administrators



***Leadership, Unity, and  
Advocacy for Public Education***



**Alaska Superintendents Association**



**Alaska Association of Secondary  
School Principals**



**Alaska Association of Elementary  
School Principals**



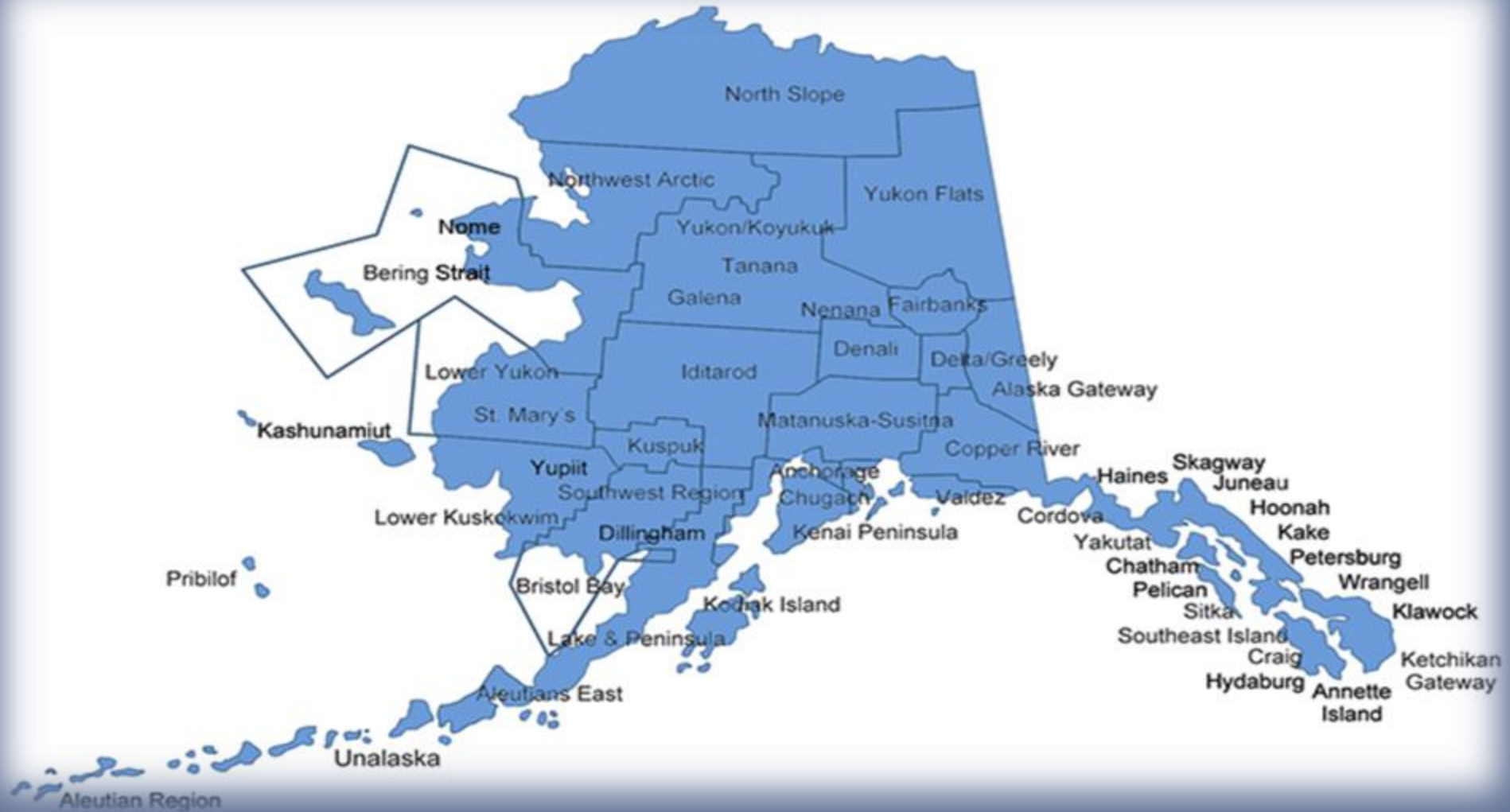
**Alaska Association of School  
Business Officials**

**& more education leaders**



*Leading Together for Alaska's Students*

# One State: 54 School Districts



*Leading Together for Alaska's Students*

# Alaska Schools - *by the numbers*

**132,576**

students

**21.7%** correspondence



**455**

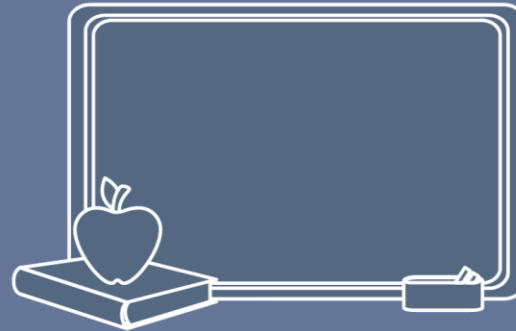
school facilities

**44%** are >40 years old

**54**

school districts

In business terms, largest  
employer in most  
communities



**7,592**

teachers

Chronic educator turnover  
each year



*Leading Together for Alaska's Students*



# Joint Position Statements: Unified Priorities for Supporting Alaska Students

Developed collaboratively by:

- Superintendents
- K-12 Principals
- School Business Officials
- ACSA

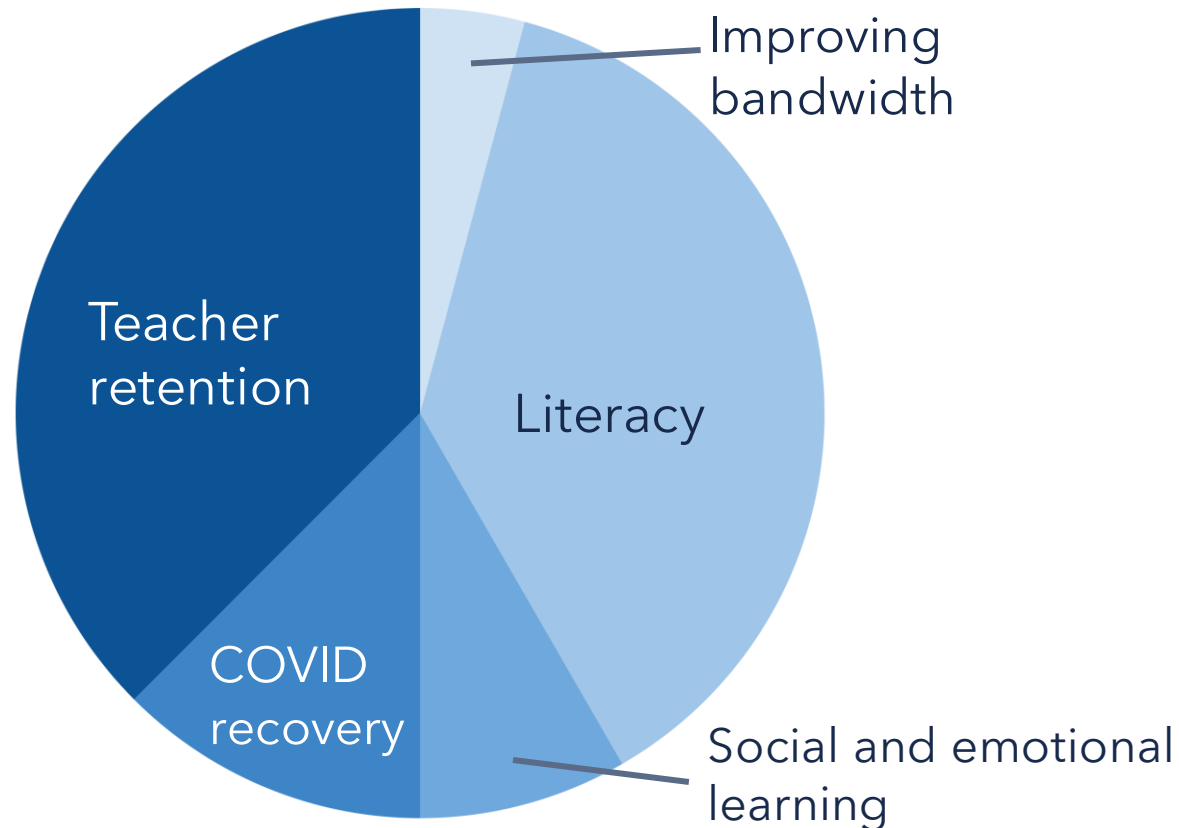


*Leading Together for Alaska's Students*

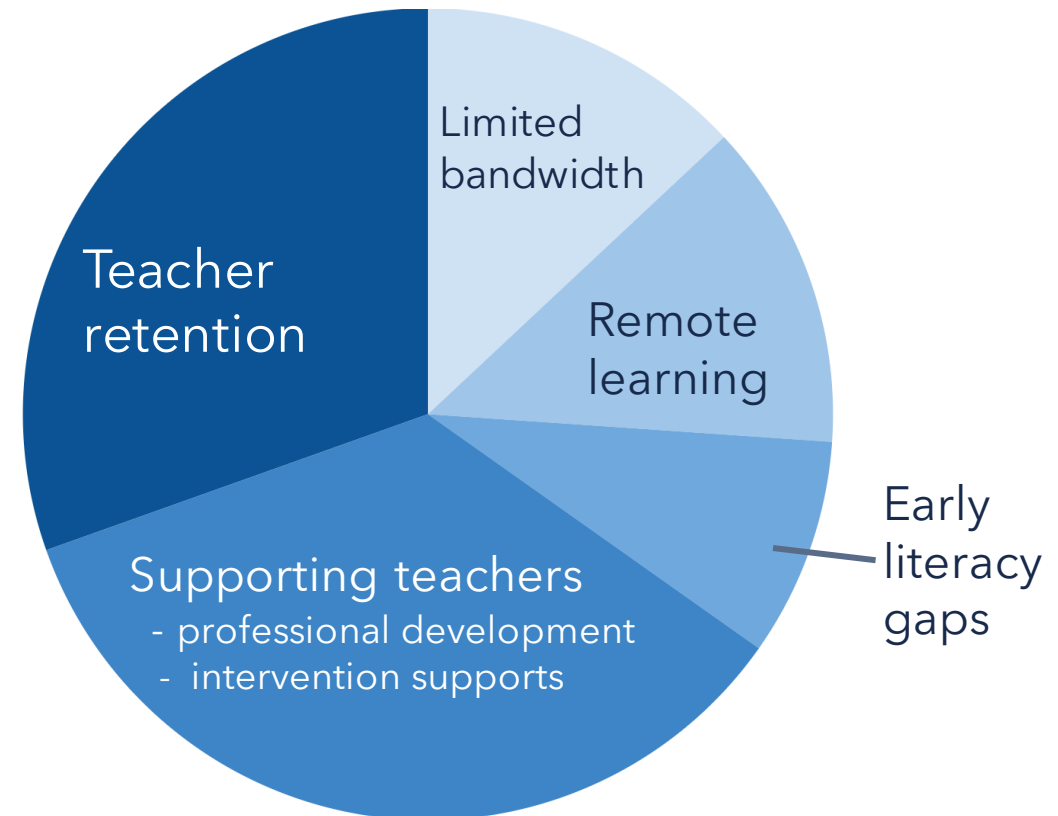
# Superintendent Survey:

*Priorities and barriers for student achievement*

## Priorities for Student Achievement



## Barriers to Student Achievement



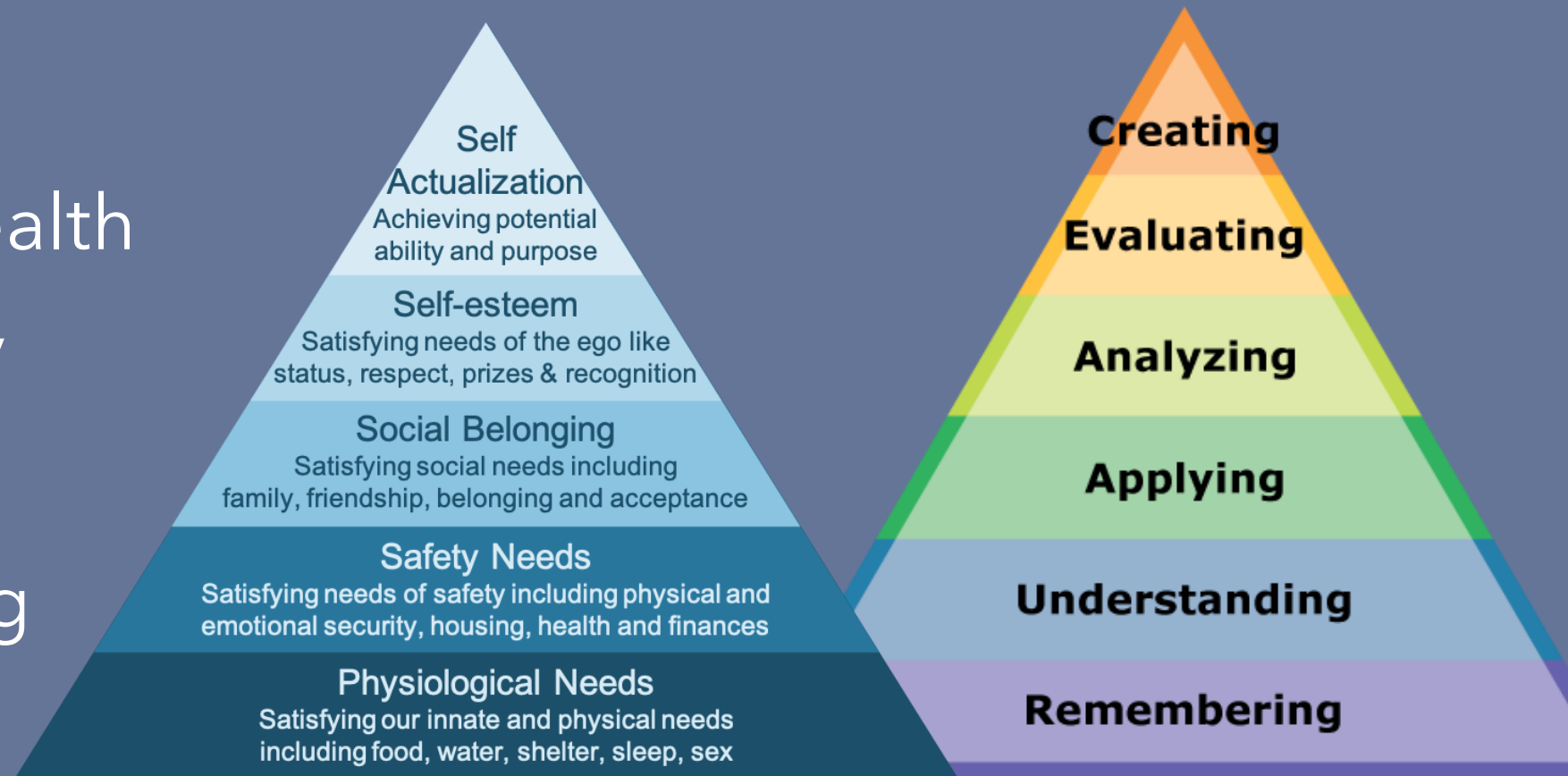
*Leading Together for Alaska's Students*

# "Students have to **Maslow** before they can **Bloom**"

- Dwayne Reed

## **Basic needs**

-  Emotional Health
-  School Safety
-  Nutrition
-  Early Learning



*Leading Together for Alaska's Students*



# Social, Emotional, and Mental Health

*JPS p. 2*

Alaska has extremely high rates of childhood trauma, including the highest in nation in sexual assault, repeat child maltreatment, and suicide

Adverse Childhood Experiences (ACEs) have lifelong impacts on learning and health

***COVID impact***

Mental health impacts of isolation  
Loss of access to school support systems



*Leading Together for Alaska's Students*



# Early Childhood Education



Nearly 70% of Alaska students enter kindergarten without foundational preparation for learning, including early literacy

Research shows that early intervention and instruction is essential to healthy brain development and lifelong success

Quality early education is a long-term investment - reduces need for high-cost intensive intervention later



*Leading Together for Alaska's Students*

# Career & Technical Education



CTE programs provide students with the foundation for high-paying, skilled jobs

Robust CTE programs are a critical component of schools with high academic performance and high graduation rates

Gives students the opportunity to build future-ready skills in and for Alaska



*Leading Together for Alaska's Students*

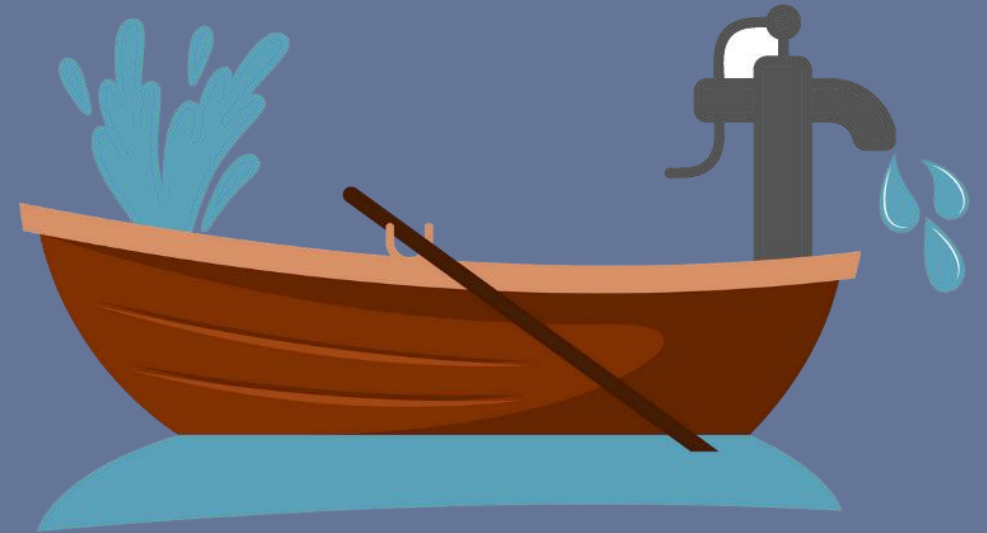
# School Safety



Student learning requires a safe school environment

- Average building age: 39 years
- 59 buildings are over 60 years old

Estimated current backlog:  
**\$206 million and growing**



*Leading Together for Alaska's Students*

# Increasing Bandwidth

JPS p. 5

Almost 60,000 Alaska students lack the bandwidth necessary for digital learning

- Limited rural infrastructure
- High costs statewide
- Federal funds restricted for school facilities

All Alaska students **need** and **deserve** digital equity

## COVID impact

No access to live instruction without adequate bandwidth  
Unprecedented bandwidth demands



*Leading Together for Alaska's Students*

# Educator Retention

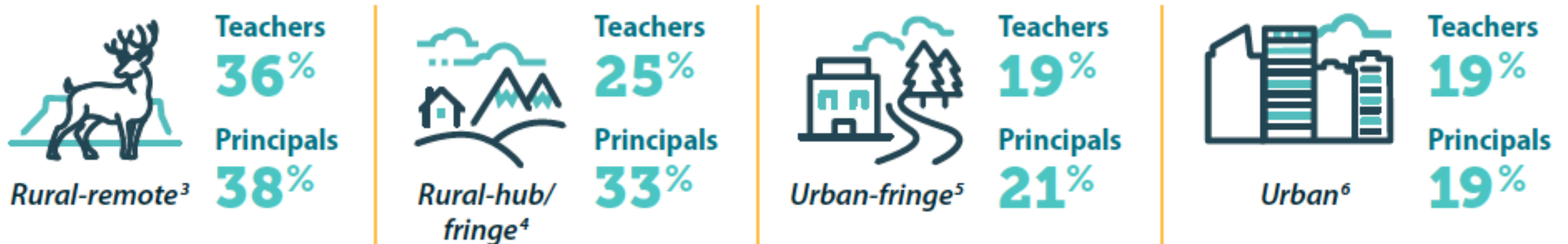
Teacher quality is the single most important school-based factor in student performance

Retaining effective educators and leaders is essential to closing achievement gaps and increasing student performance

## Rural schools and students are hardest hit by turnover

Rural schools have much higher teacher and principal turnover than urban or urban-fringe schools, with 64 percent of rural-remote teachers who turn over leaving the state or the profession.

### Average annual turnover rates for 2012/13 to 2017/18



# Educator Retention

Superintendent turnover drives principal turnover drives teacher turnover drives low student performance

- ASA aspiring superintendents
- District office cohort
- New and incoming superintendents
- Alaska School Leadership Academy
- Alaska Staff Development Network



# Timely, Reliable Funding

JPS p. 2

***Predictable  
funding***

***Sound  
financial  
management***

***Improved  
teacher  
retention***

***Greater  
student  
achievement***

Stable, predictable funding improves district efficiency and keeps the focus on student achievement



*Leading Together for Alaska's Students*



# Alaska's Educational Leaders are United:

## *Efficiency in Unity*



- Superintendents ([ASA](#))
- Principals ([AASSP](#), [AAESP](#))
- Alaska Association of School Business Officials ([ALASBO](#))

Educational leaders including

- Alaska Association of School Boards ([AASB](#))
- Department of Health and Social Services ([DHSS](#))
- Department of Education and Early Development ([DEED](#))
- Alaska Municipal League ([AML](#))
- University of Alaska, College of Education ([UA COE](#))
- Alaska School Activities Association ([ASAA](#))
- National Education Association-Alaska ([NEA-A](#))
- Coalition for Education Equity ([CEE](#))
- Alaska Educational Resource Center ([SERRC](#))
- And other state and local educational organizations



*Leading Together for Alaska's Students*

# We look forward to supporting you!

*Your resource for public education.*

Dr. Lisa S. Parady,  
ACSA Executive Director  
[lparady@alaskaacsa.org](mailto:lparady@alaskaacsa.org)

(907) 903-1689 (cell)  
(907) 586-9702  
@Lparady1 @ACSAASDN



*Leading Together for Alaska's Students*