

Trust

Alaska Mental Health
Trust Authority

House Finance Committee

March 9, 2021

Trustees

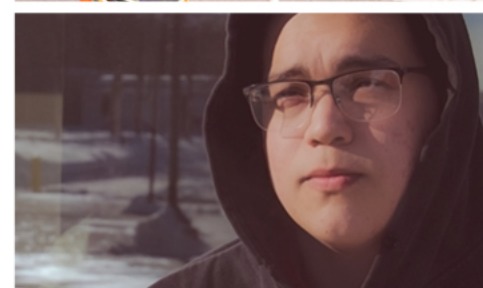
- **Chris Cooke, *Chair***
- **Anita Halterman, *Vice Chair***
- **Rhonda Boyles, *Secretary***
- **Verné Boerner**
- **John Sturgeon**
- **Annette Gwalthney-Jones**
- **Brent Fisher**



Trust Beneficiaries

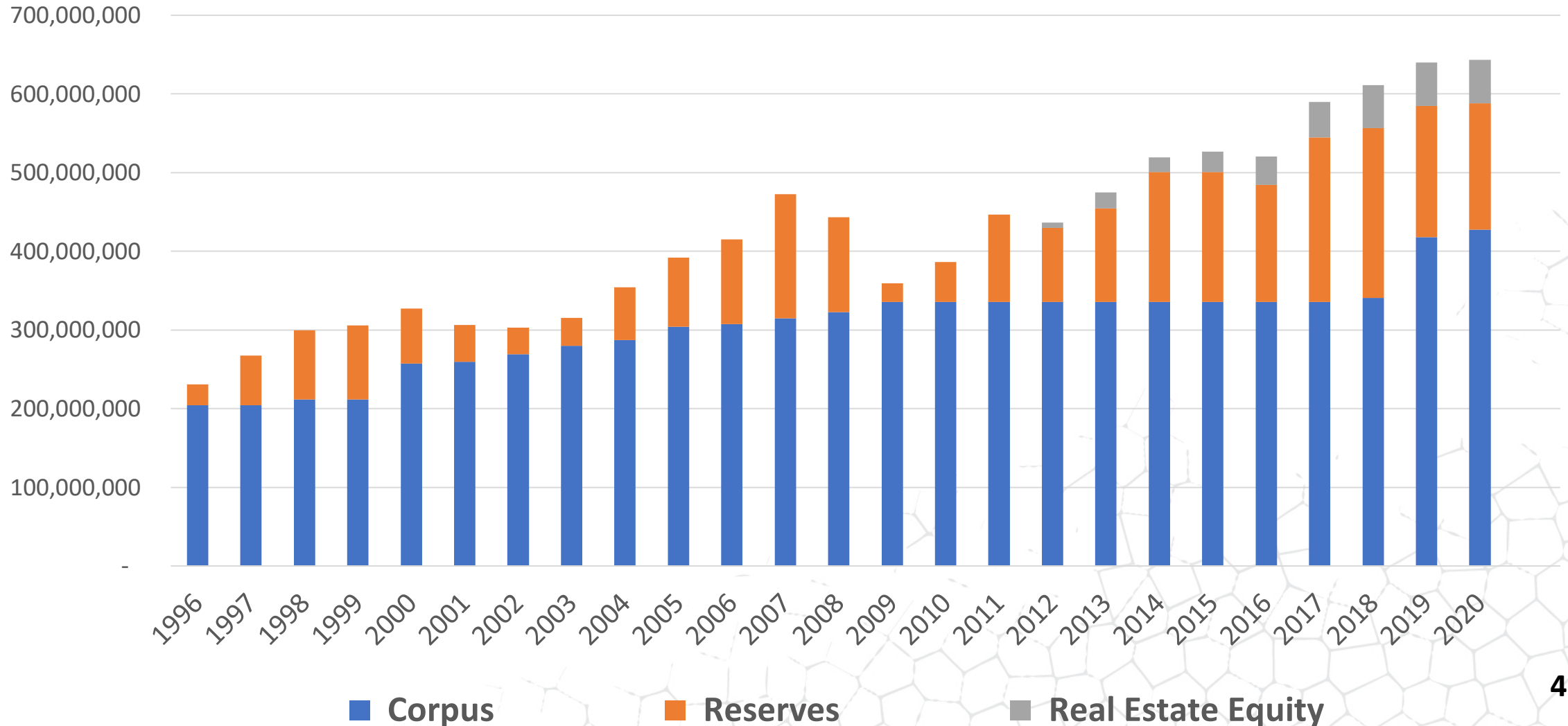
Beneficiaries include Alaskans who experience:

- Mental illnesses
- Intellectual and/or developmental disabilities
- Alzheimer's disease and related dementia
- Traumatic brain injuries
- Substance use disorders



Financial Position

Trust Invested Assets



FY22 Available Funding

Trust's Estimated Available Funding FY22

Investment Portfolio Payout (4.25%)	\$25,200,000
Prior Year Funds Carried Forward	\$3,500,000
Land Office Spendable Income	\$4,600,000
Interest Earnings	\$700,000
Total	\$34,000,000

Prior Years' Available Funding

FY21	\$33,243,200
FY20	\$31,875,600
FY19	\$29,437,000
FY18	\$28,908,000
FY17	\$28,234,000

Trust Budget Development Process

- Multi-month budget development process
- Trustees approve a budget in late summer
- Approved budget transmitted to Governor and LB&A by September 15

Comprehensive Stakeholder Engagement

ADVISORY BOARDS

BENEFICIARIES

STATE, TRIBAL,
COMMUNITY, &
LOCAL PARTNERS

TRUST STAFF



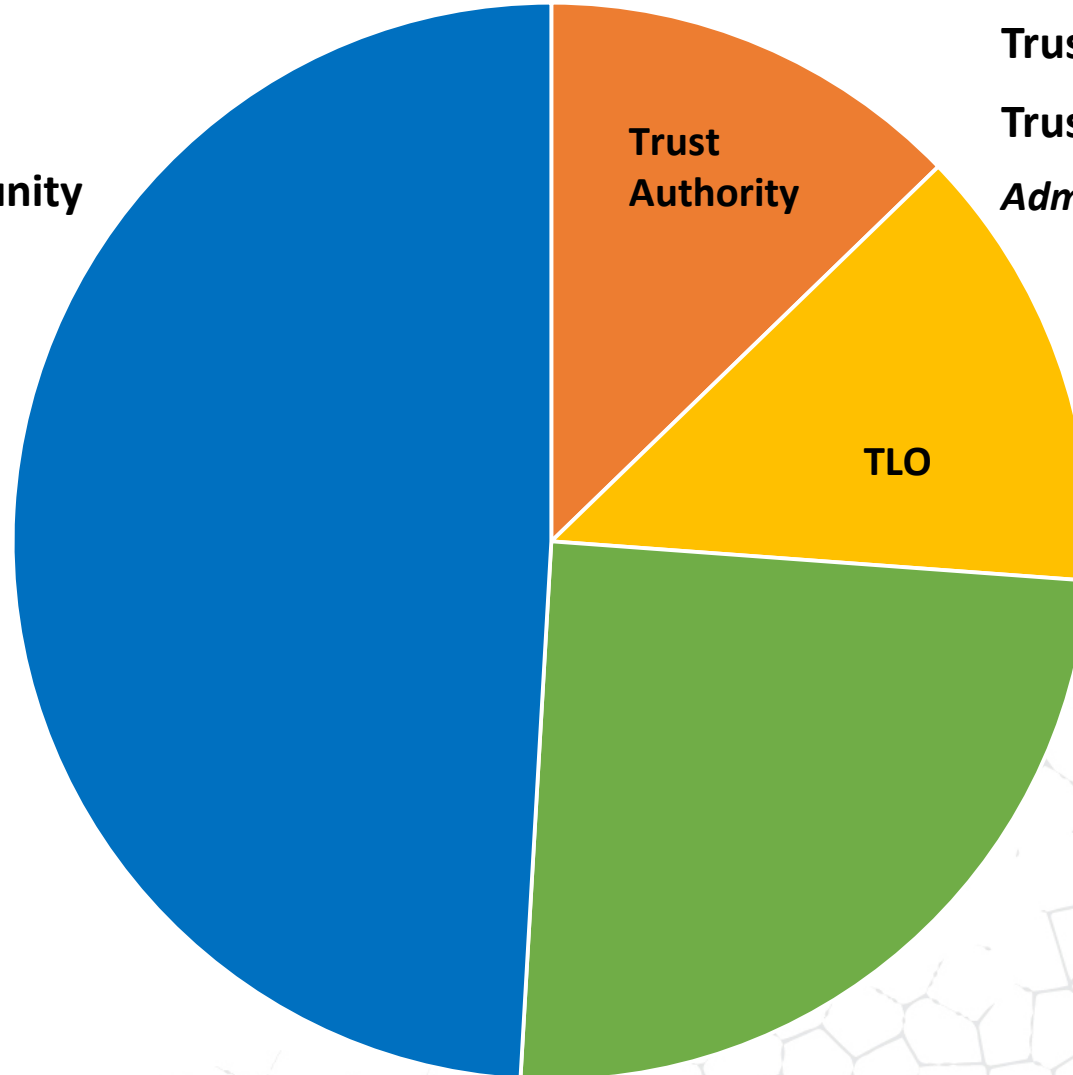
FY 22 Spending

Authority Grants

\$16,084.9

Designated grants to community providers, nonprofits, local governments and Tribal organizations

•Includes \$1.7 M in mini grants



Administrative Budgets

Trust Authority: \$4,179.9

Trust Land Office (TLO): \$4,393.8

Administrative budget is lower than FY21 levels

MHTAAR

\$8,110.0

Designated grants to state agencies, requires receipt authority

FY 22 GF/MH Recommendations

	<i>Trustee Approved Budget</i>			<i>Governor's Proposed</i>			
Project	MHTAAR	GF/MH	AHFC	MHTAAR	GF/MH	Trust Reserves	AHFC
Operating Budget Items							
Holistic Defense Project (DOA)	\$ 86.0	\$ 86.0	\$ -	\$ 86.0	\$ -	\$ 86.0	\$ -
Holistic Defense (Alaska Legal Services, DCCED)	\$ -	\$ 180.0	\$ -		\$ -	\$ 180.0	\$ -
Alaska Autism Resource Center (DEED)	\$ 50.0	\$ 50.0	\$ -	\$ 50.0	\$ -	\$ 50.0	\$ -
Peer Support Certification (DHSS)	\$ 130.0	\$ 20.0	\$ -	\$ 130.0	\$ -	\$ 20.0	\$ -
Zero Suicide (DHSS)	\$ 71.5	\$ 53.5	\$ -	\$ 71.5	\$ -	\$ 53.5	\$ -
Comprehensive Program Planning Position (DHSS)	\$ 75.0	\$ 75.0	\$ -	\$ 75.0	\$ -	\$ 75.0	\$ -
Beneficiary Mental Health Status Data Collection (DHSS)	\$ 45.0	\$ 45.0	\$ -	\$ 45.0	\$ -	\$ 45.0	\$ -
Aging & Disability Resource Centers (DHSS)	\$ 300.0	\$ 250.0	\$ -	\$ 300.0	\$ -	\$ 250.0	\$ -
IT Application/Telehealth Service System (DHSS)	\$ 38.1	\$ 63.0	\$ -	\$ 38.1	\$ -	\$ 63.0	\$ -
Alaska Training Cooperative (UAA)	\$ 885.6	\$ 100.0	\$ -	\$ 885.6	\$ -	\$ 100.0	\$ -
Alaska Justice Information Center (UAA)	\$ 225.0	\$ 225.0	\$ -	\$ 225.0	\$ -	\$ 225.0	\$ -
Support Client Services at API (DHSS) **	\$ -	\$ -	\$ -	\$ -	\$ -	\$ 6,000.0	\$ -
Capital Budget Items							
Deferred Maintenance (DHSS)	\$ 250.0	\$ 250.0	\$ -	\$ 250.0	\$ -	\$ 250.0	\$ -
Medical Appliances and Assistive Tech (DHSS)	\$ -	\$ 500.0	\$ -	\$ -	\$ -	\$ 500.0	\$ -
Special Needs Housing Grant (AHFC)	\$ 200.0	\$ 5,750.0	\$ 1,750.0	\$ 200.0	\$ -	\$ 1,500.0	\$ -
Housing Assistance Program (AHFC)	\$ 950.0	\$ 2,850.0	\$ 6,350.0	\$ 950.0	\$ -	\$ -	\$ 6,250.0
Home Modifications (DHSS)	\$ 250.0	\$ 900.0	\$ -	\$ 250.0	\$ -	\$ 900.0	\$ -
Coordinated Community Transportation (DOT&PF)	\$ 300.0	\$ 1,000.0	\$ -	\$ 300.0	\$ 1,000.0	\$ -	\$ -
Totals	\$ 3,856.2	\$ 12,397.5	\$ 8,100.0	\$ 3,856.2	\$ 1,000.0	\$ 10,297.5	\$ 6,250.0

****This increment is also in the FY21 Supplemental Budget using Trust Reserves**

Work of the Trust

Established Focus Areas

- Disability Justice
- Mental Health and Addiction Intervention
- Beneficiary Employment & Engagement
- Housing and Home & Community Based Services

Additional Priorities

- Workforce Development
- Early Childhood Intervention and Prevention



Trust Grant Impacts

- Supported project increasing substance use disorder treatment capacity
 - \$300,000 to Akeela, Inc. to increase residential treatment capacity
 - \$125,000 to SeaView Community Services Recovery Housing Program in Seward
 - \$300,000 to Set Free Alaska's residential treatment facility in Homer
- Expanded services to prevent and end homelessness
 - \$150,000 to the Bethel Winter House
 - \$250,000 to Covenant House Alaska
 - \$200,000 for the new Glory Hall facility in Juneau
 - \$500,000 to United Way of Anchorage
- Supported ongoing implementation of the Medicaid Behavioral Health Waiver





COVID-19 Response Grants

- Trustees approved \$1.5M in spring of 2020
- Supported 70+ beneficiary serving organizations across the state
- Program in addition to regular Trust granting activity

Improving Alaska's Psychiatric Crisis Care

- Our behavioral health crisis system of care should provide people experiencing a behavioral health crisis the right care, in the right setting, when they need it -- just like what we expect for a physical health crisis
- Currently law enforcement, EMS, and hospital emergency rooms serve people having a mental health crisis.



Trust Land Office

- USFS Land Exchange
- Icy Cape Development
- Fort Knox 2021 Expansion
- Subport Sale Finalized

FY 21 Anticipated Trust Land Office Revenues	
Coal	\$171,000
Oil and Gas	\$1,257,000
Minerals	\$1,078,000
Materials	\$280,000
Timber	\$2,581,000
Land	\$22,865,000
Real Estate	\$1,668,000
Total	\$29,900,000

Trust Reserves

- Create buffer for years with low earnings, ensuring Trust programming is not impacted
- Described in the *Trust Asset Management Policy Statement*
- Some Reserves are managed by APFC, some by Dept. of Revenue
- If the Trust only relied on prior year earnings for spending, there would have been spending reductions in 9 of the past 24 years
 - In 5 years since 1994, the Trust's investments had negative earnings



Trust Reserves

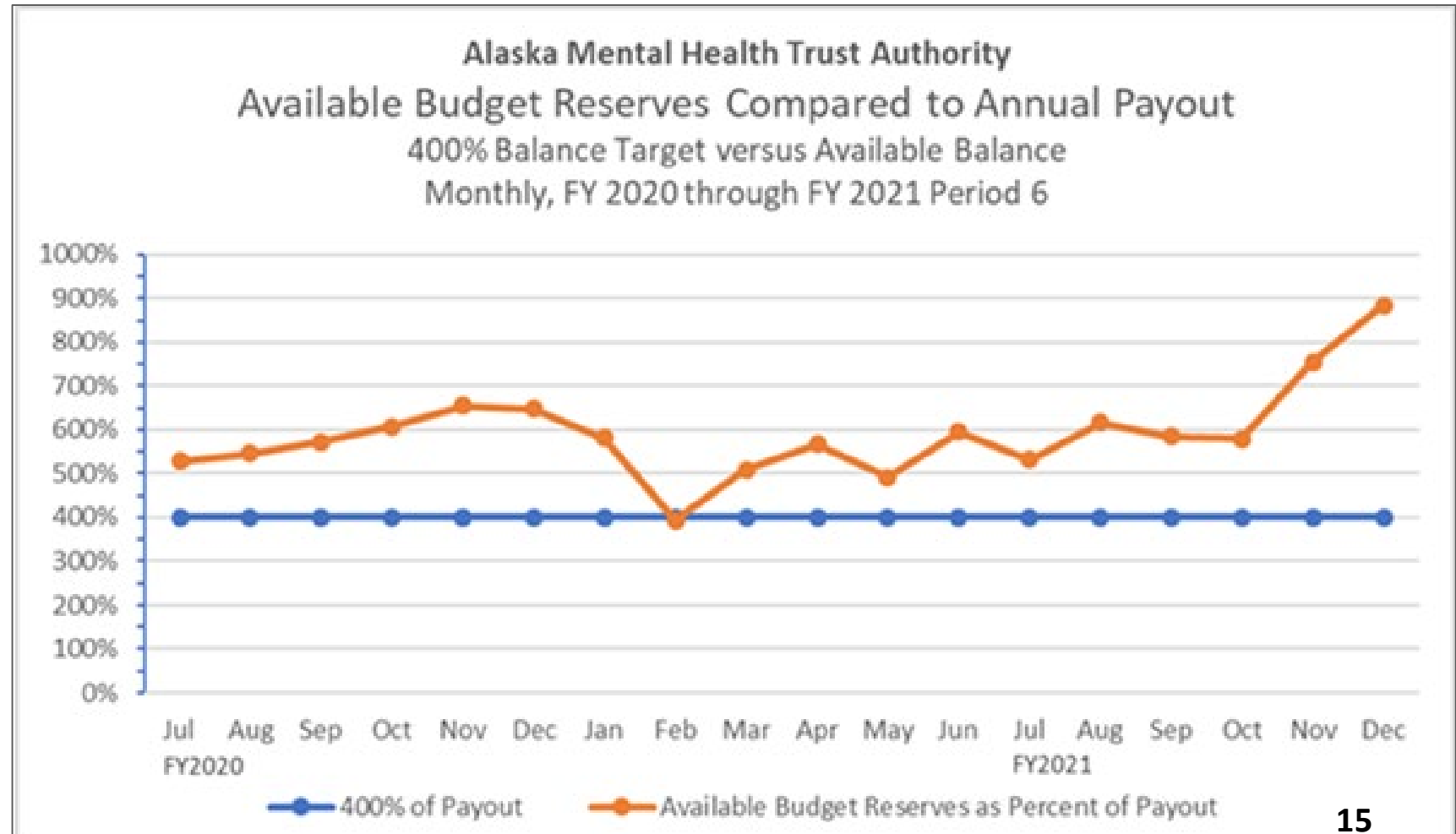
Reserves target set after consulting with Callan at 400% of the current year's payout

- Allows Trust to sustain program work during prolonged market downturns
- Trust Reserves are volatile

Trust Reserves

FY20 Year End Balance:
\$160,555,000

FY21 Year End Balance:
(estimated) \$175,000,000
to \$225,000,000



Trust Reserves

When Reserves exceed the target:

- *Asset Management Policy Statement* says the Trust will consider inflation-proofing the corpus
- There has been no substantial inflation proofing since 2005
- Our FY21 inflation-proofing liability is \$120 million

Thank You

Questions?

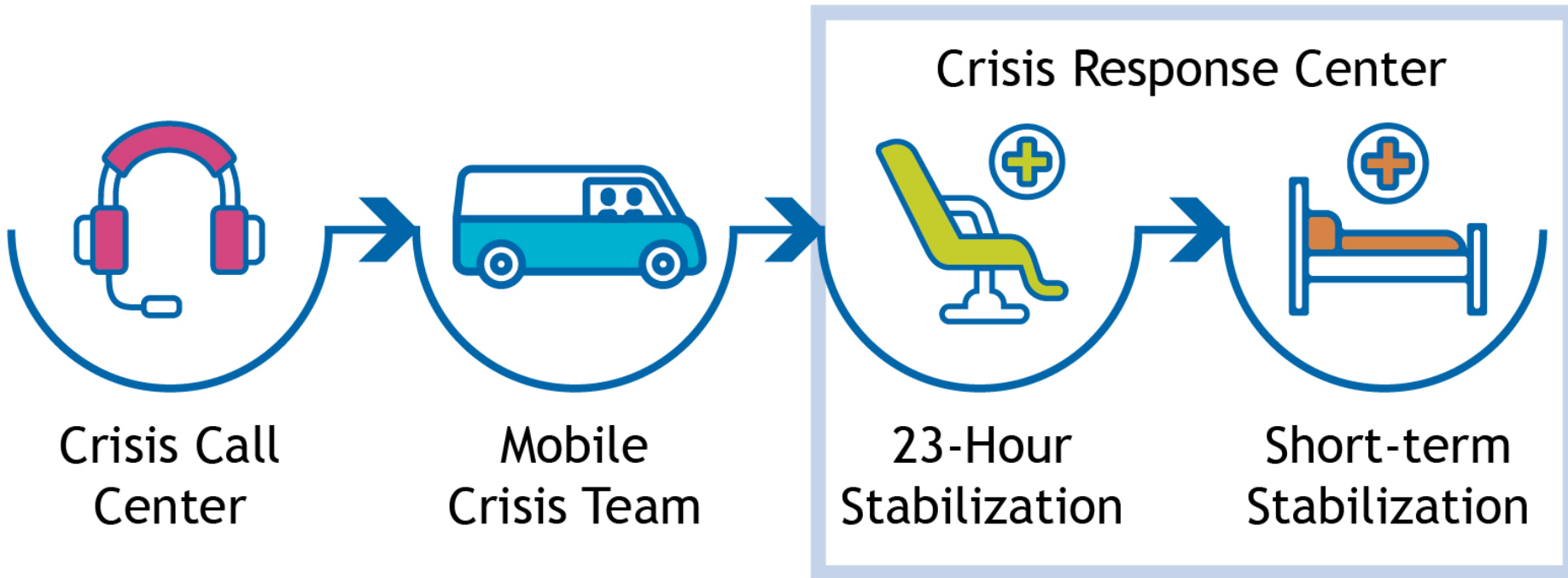


Supplemental Information: Behavioral Health Crisis Response



What is the Crisis Now Framework?

Someone to Talk to, Someone to Respond and a Place to Go



Crisis Now Implementation is Underway

Project Team structure developed

- Management Team
- System-focused Teams
 - Oversight and Feasibility
 - Crisis Call Center
 - Workforce
 - Legislation
 - Rural Alaska
- Community Workgroups: Anchorage, Fairbanks, Mat-Su



Crisis Now Next Steps

