



Fairbanks Native Association Founders

Nick Gray

Ralph Perdue

Poldine Carlo

Bill Carlo



# FAIRBANKS NATIVE ASSOCIATION

HEAD  START  
0-5

 3830 South Cushman Street

 (907) 451-8814

 [www.fairbanksnative.org](http://www.fairbanksnative.org)



# Funded to Serve 303 Children Prenatal to Five



**Poldine Carlo Bldg.    McKinley Site    Denali Elementary    Anne Wien Elementary**

**CENTER BASED EXTENDED DAY-7:45-5:15 (9.5hrs) MON-THUR/Year-round**

**16- 2 Infant Classrooms**

**58- 3 Preschool Classrooms**

**40- 5 Toddler Classrooms**

**CENTER BASED PART DAY-8:30-2:30 or 10-4 (6hrs) MON-THUR/Year-round**

**108- 6 Preschool Classrooms**

**LOCALLY DESIGNED OPTION-10-4 (6hrs) MON-THUR/Part Year-9 months**

**Indigenous Language-Denaakk'e**

**16- 1 Preschool Classroom**

**HOME BASED OPTION-Weekly Home Visit/2 socials a month/ year round**

**54- Early Head Start (Prenatal- 3)**

**11- Head Start (3-5 years of age)**

**110- Early Head Start (Prenatal- 3)**

**193- Head Start (3-5 years of age)**



## One Time Federal Funding this Five Year Grant Cycle:

2016/17 Poldine Carlo Building:	\$ 4,381,151
2016/17 New School Bus:	\$ 123,281
2016/17 Playground/Lead Testing Equipment:	\$ 171,068
2017/18 Sprinkler System/Child Size Toilets:	\$ 400,000
2018/19 Infant Toddler Wing Renovations:	\$ 2,750,000
2019/20 Infant Toddler Addition:	\$ 3,042,287
	<hr/>
	\$ 10,867,787

### DHHS - Office of Head Start

- Fiscal Year September 1 through August 31.
- Funding cycle 5 years.

### State of Alaska Grant DEED

- Fiscal Year July 1 through June 30.
- Funding cycle 1 year.

### Extended Day Client Fee

- Parent Fees for non-Head Start hours of the day.

### CACFP-Child/Adult Care Food Program


- Fiscal Year October 1 through September 30.
- Reimbursement Food Program Funding cycle 1 year.

### Child Care Grant

- Fiscal Year July 1 through June 30.
- Monthly CCG funds based on daily attendance.

## Budgeted 2020-2021 Program Year Revenues:

	DHHS – Office of Head Start	\$ 5,650,905.
	*HS 0-5 Program Operations-	5,306,963.
	*HS 0-5 TTA-	77,663.
	*COVID Supplement- (1 time)	266,279.
	State of Alaska Grant DEED	\$ 752,972.
( \$ 140,475. as of 02/28/21-Remote)	Extended Day Client Fee	\$ 420,630.
( \$0.00 - Haven't applied for CACFP-Remote)	Child/Adult Care Food Program	\$ 123,333.
( \$0.00 - Haven't applied for CCG-Remote)	Child Care Grant	\$ 14,493.
	<hr/>	
	<b>Total 2020-2021 Budgeted Revenue</b>	<b>\$ 6,962,333.</b>







**2016/17 Federal One Time funding for Poldine Carlo Building: \$ 4,381,151**  
**2017/18 Federal funding for Sprinkler System/Child Size Toilets: \$ 400,000**

**New Building Purchased to move in April 2018**



**Dedication Ceremony**  
**POLDINE CARLO**  
**BUILDING**



- Kitchen
- 2 Infant Rooms
- 3 Toddler Rooms
- Family Conference Room
- 3 Offices

**2018/19 Federal funding Renovations Create Infant Toddler Wing: \$2,750,000**  
**Renovations Infant Toddler Wing Completed July 2020**



- Salmon Climbing Structure
- Food Cache Slide
- Birch Canoe
- Beaver Balance Beam
- Log and Waterfall Climbing Structures

**Alaskan Themed Preschool Playground – Completed September 2020**





- New Ventilation System for Infant Toddler Wing
- 3 Toddler Rooms
- Large Motor Room

**2019/20 Federal funding Infant Toddler Addition and Ventilation: \$ 3,042,287**  
**Addition to Infant Toddler Wing – Completed Dec 2020**



**Large Motor Room**

**Preschool Classroom Materials**

**New Entries due to COVID**

# Remote Service Delivery and Enrollment During Pandemic



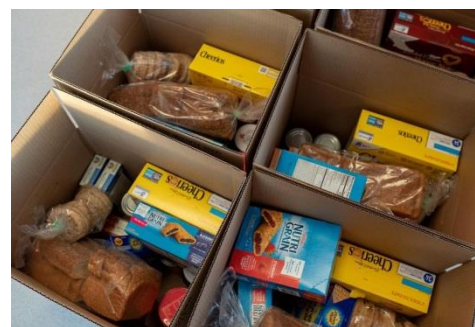
Mr. Ben offering a ZOOM story time. We provide Hello and High Five Highlight Magazine subscriptions to families.



<b>Funded:</b>	<b>136</b>	<b>167</b>	<b>303</b>
<b>Monthly Enrollment During the COVID-19 Pandemic:</b>			
<b>March</b>	<b>2020: 104- Early Head Start</b>	<b>167- Head Start</b>	<b>271</b>
<b>April</b>	<b>2020: 104- Early Head Start</b>	<b>165- Head Start</b>	<b>269</b>
<b>May</b>	<b>2020: 102- Early Head Start</b>	<b>163- Head Start</b>	<b>265</b>
<b>June</b>	<b>2020: 98- Early Head Start</b>	<b>156- Head Start</b>	<b>254</b>
<b>July</b>	<b>2020: 97- Early Head Start</b>	<b>154- Head Start</b>	<b>251</b>
<b>August</b>	<b>2020: 90- Early Head Start</b>	<b>150- Head Start</b>	<b>240</b>
<b>September</b>	<b>2020: 44- Early Head Start</b>	<b>65- Head Start</b>	<b>109</b>
<b>October</b>	<b>2020: 53- Early Head Start</b>	<b>75- Head Start</b>	<b>128</b>
<b>November</b>	<b>2020: 53- Early Head Start</b>	<b>75- Head Start</b>	<b>128</b>
<b>December</b>	<b>2020: 51- Early Head Start</b>	<b>77- Head Start</b>	<b>128</b>
<b>January</b>	<b>2021: 55- Early Head Start</b>	<b>77- Head Start</b>	<b>132</b>
<b>February</b>	<b>2021: 53- Early Head Start</b>	<b>77- Head Start</b>	<b>130</b>



Every other week we provide books in learning kits, activity materials and food boxes to families.



- \*Diapers/Wipes
- \*Masks
- \*First Aid Kits
- \*HATCH Learning Tablets



# FNA Head Start 0-5 Current COVID-19 Plan

**Substantial Spread:** Greater than 10 cases per 100,000 in 14 days

- All options receive remote services with bi-weekly family fun & snack packs
- All options receive audio and video conferencing

Serving 159 Children: 68 Early Head Start and 91 Head Start (15 Classrooms)

Children in Center Based Classrooms- 8 Infants / 20 Toddlers / 80 Preschool

Children in Home Based Option- 40 Early Head Start / 11 Head Start

• *Since we aren't able to use public elementary schools classrooms at this time, seek funding for preschool addition adding 2 classrooms.*

**Intermediate Spread:** Less than 10 cases per 100,000 in 14 day

- All options receive remote services with bi-weekly family FSP
- Center Based Options operate in classroom lower ratios
- Home Based Options receive audio and video conferencing and individual family social in a classroom

Extended Day 7:45am-5:15pm (4 infants or toddlers/10 preschool)

Part Day Session 1-8:30-2:30 or Session 2-10:00-4:00 (10 preschool)

**Moderate Spread:** Less than 5 cases per 100,000 in 14 day

- Center Based Options operate in classroom
- Home Based Option following CDC guidelines

Staggered increase in children served to return to funded enrollment and return to safe program operation with healthy distancing practices in place and updated based on state and federal guidance.



**FAIRBANKS NATIVE**  
ASSOCIATION  
**HEAD START**  
0-5