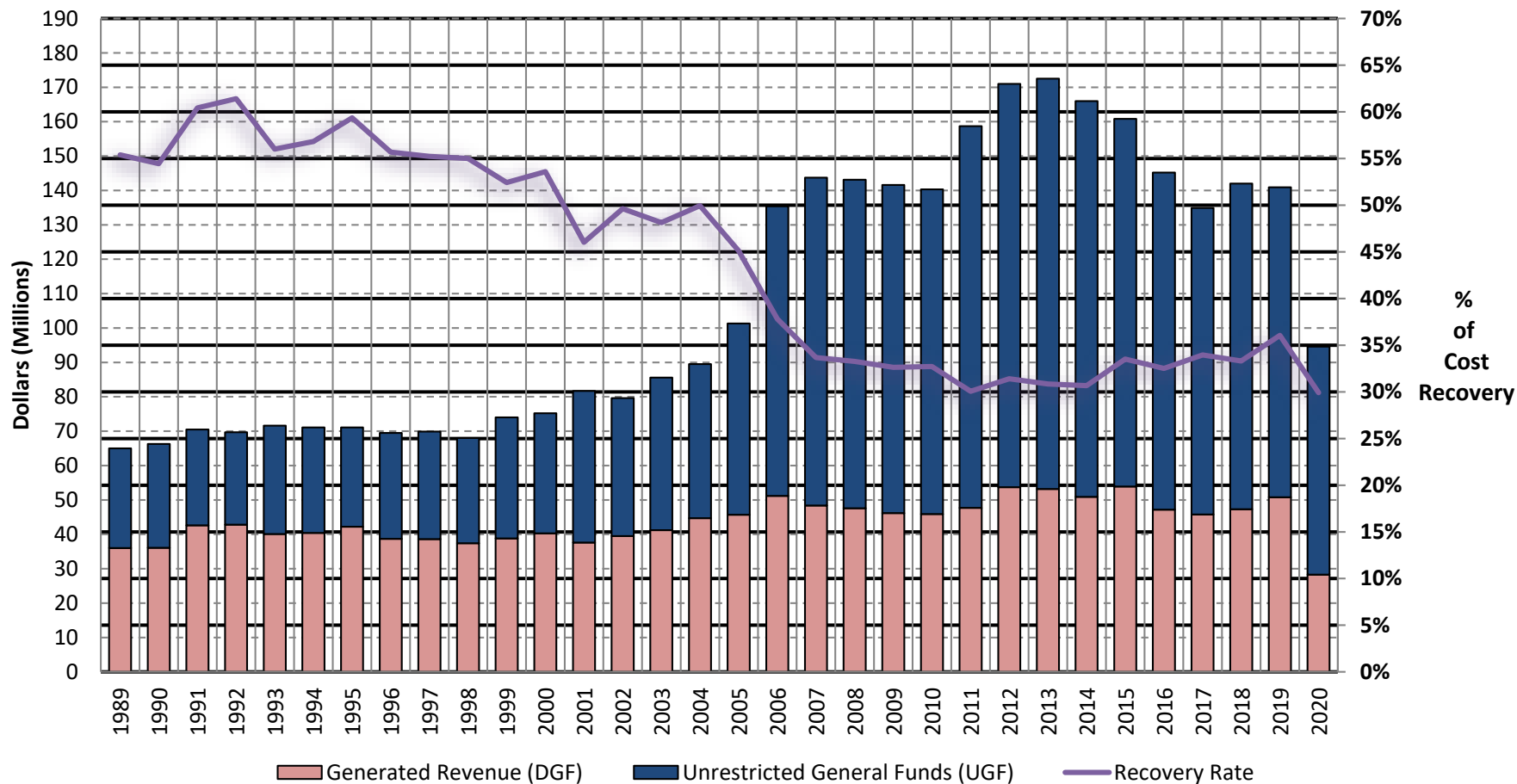


# Historical Revenue and Operating Cost

## AMHS Fare Box Recovery Rate 1989-2020



### Significant Cost Increases

- FY2004 – FY2007: Added the FVF Fairweather and FVF Chenega. Vessel wage increases of 6%, 7%, and 8%.
- FY2012 – FY2013: Added ports and increased operating weeks

Note: Data is unadjusted for inflation.