

House Health and Social Services Committee Update

COVID-19 in Alaska



Adam Crum, Commissioner, Department of Health & Social Services

Dr. Anne Zink, Chief Medical Officer, Department of Health & Social Services

Heidi Hedberg, Director, Division of Public Health, DHSS

Tari O'Connor, Deputy Director, Division of Public Health, DHSS

Dr. Joe McLaughlin, State Epidemiologist, Division of Public Health, DHSS

Dr. Coleman Cutchins, Pharmacist, COVID Testing Coordinator, DHSS

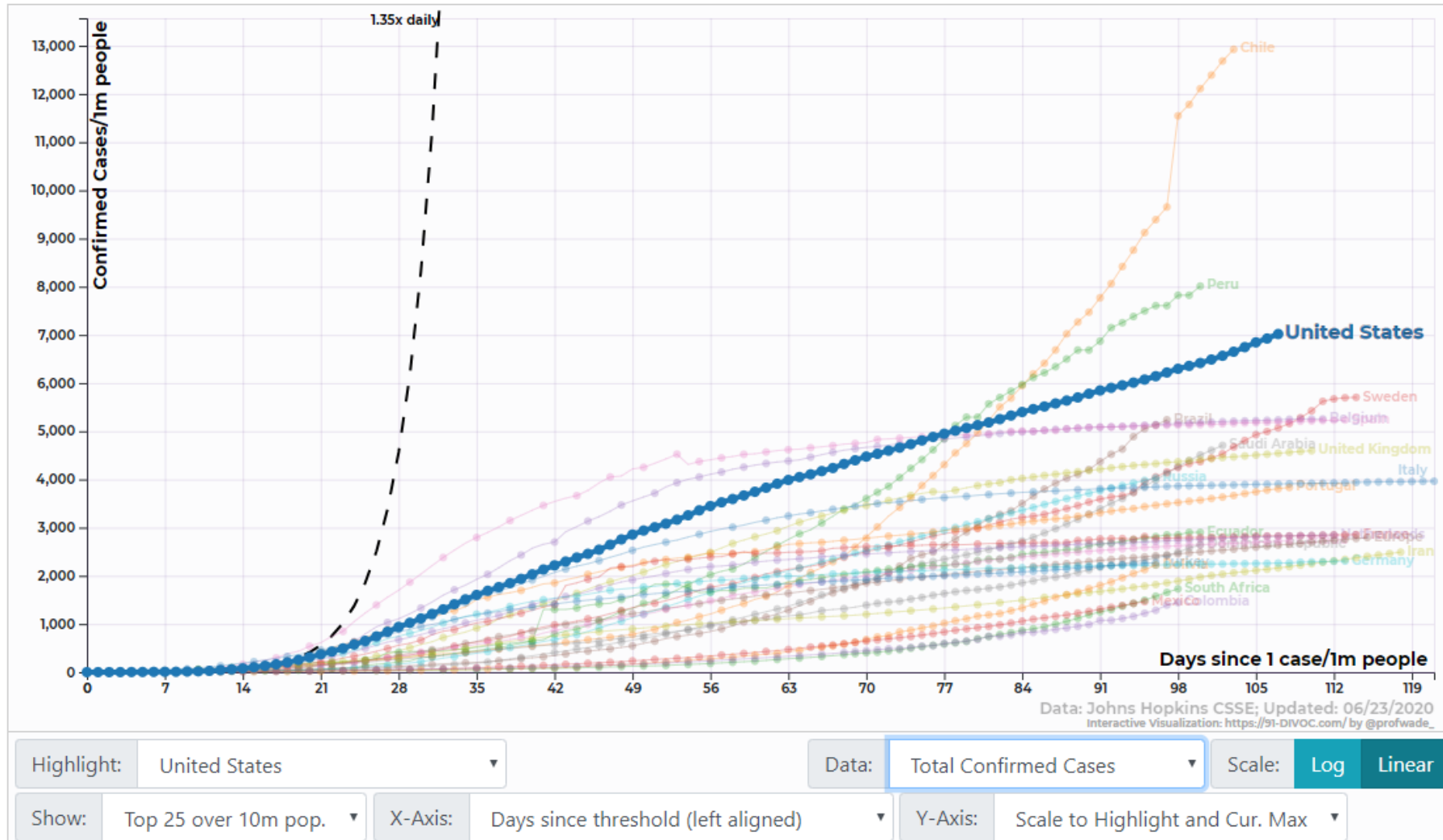
June 24, 2020

COVID-19 Overview

Dr. Anne Zink, Chief Medical Officer, DHSS

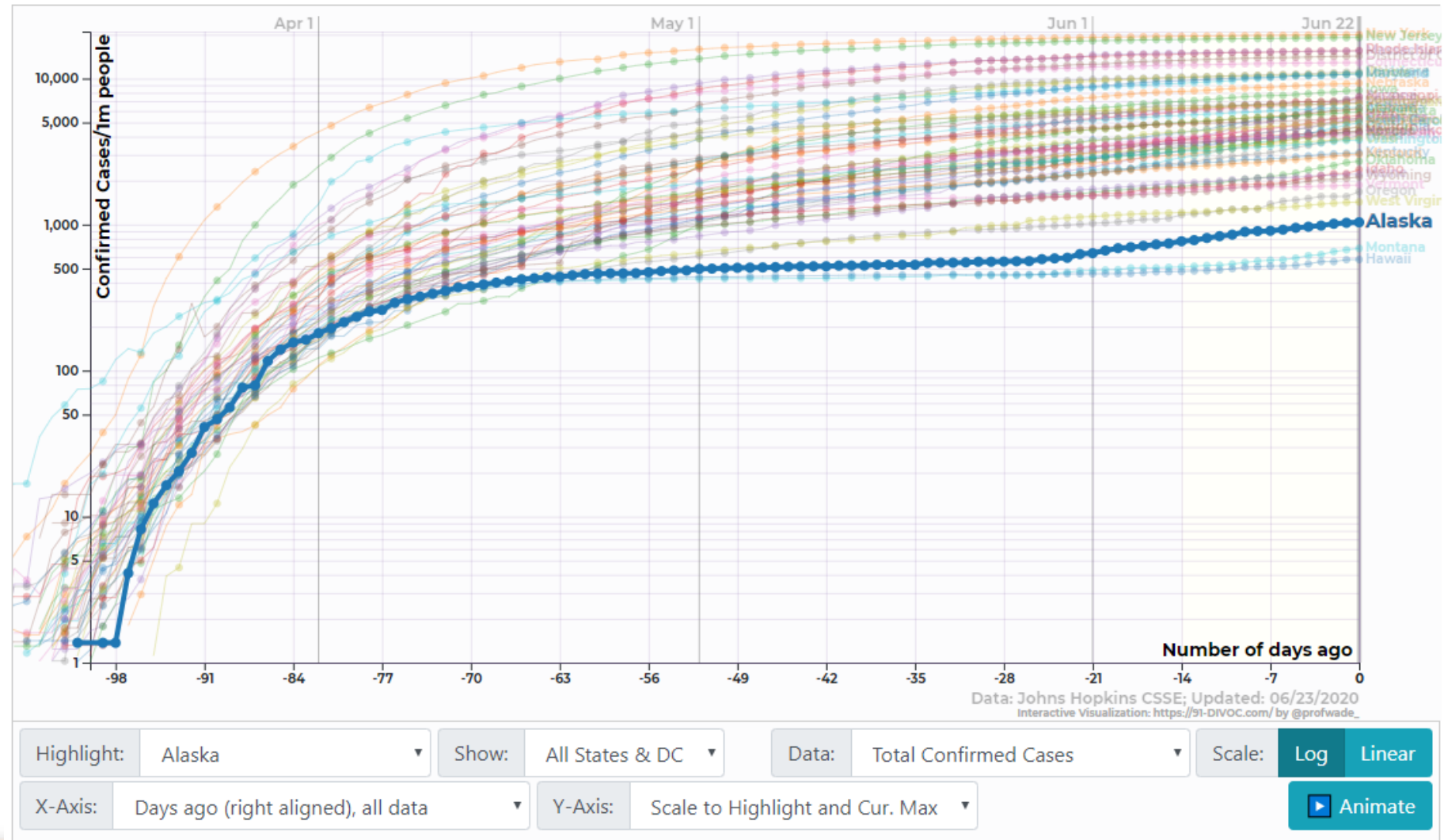
91-divoc.com – Confirmed COVID-19 Cases – International

Confirmed COVID-19 Cases, normalized by population

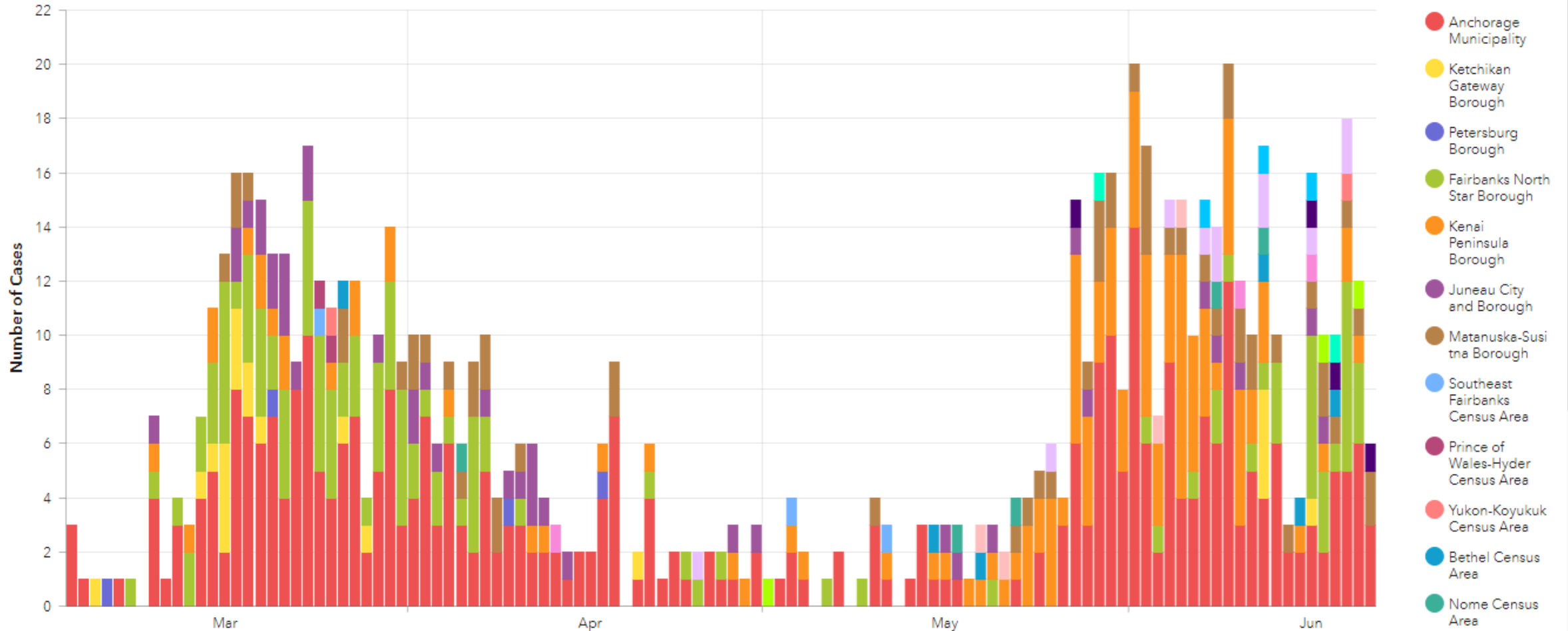


91-divoc.com – Confirmed COVID-19 Cases – United States

Confirmed COVID-19 Cases by US States/Territories, normalized by population



Confirmed Cases by Onset Date

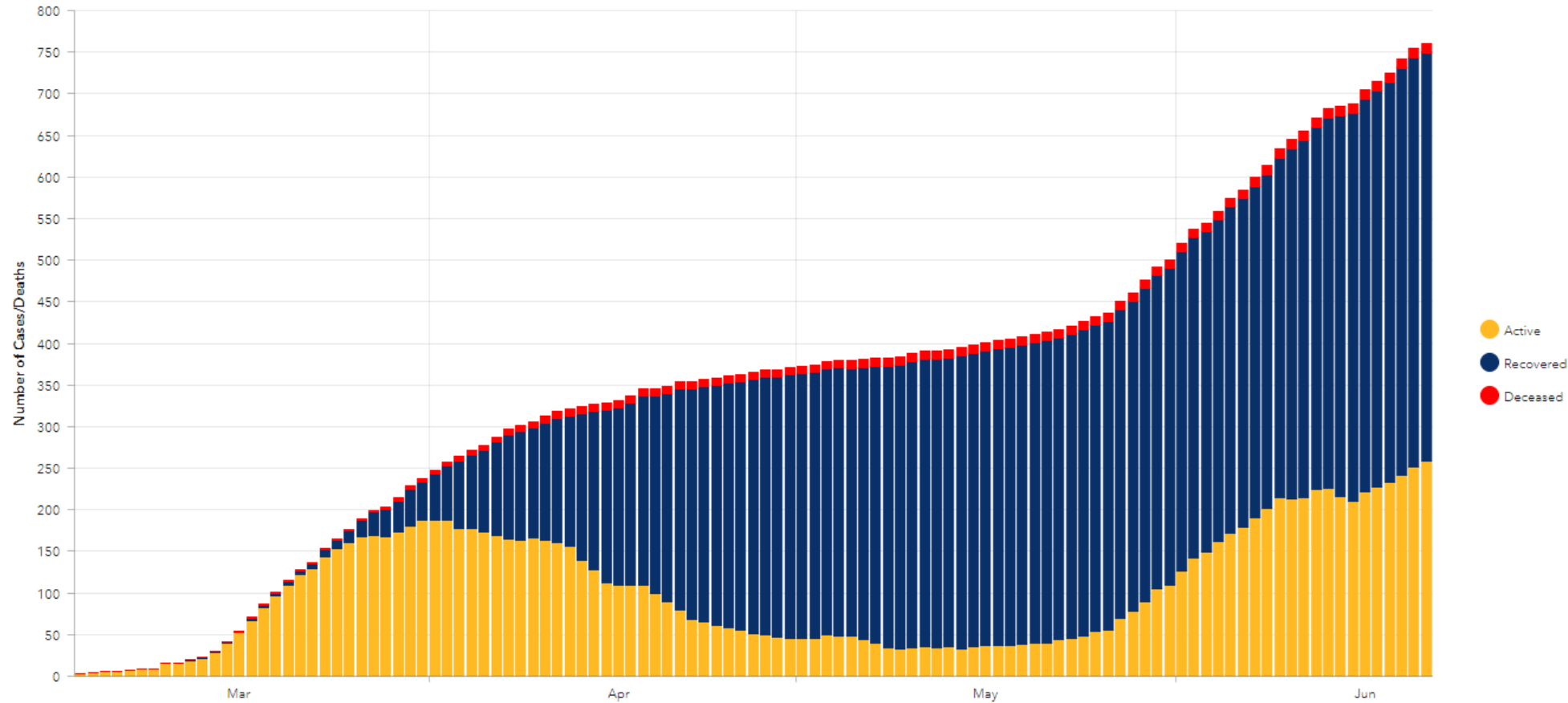


*Missing onset dates are substituted with report or hospitalization date (whichever is earlier). Therefore dates displayed may change as true onset date becomes available.

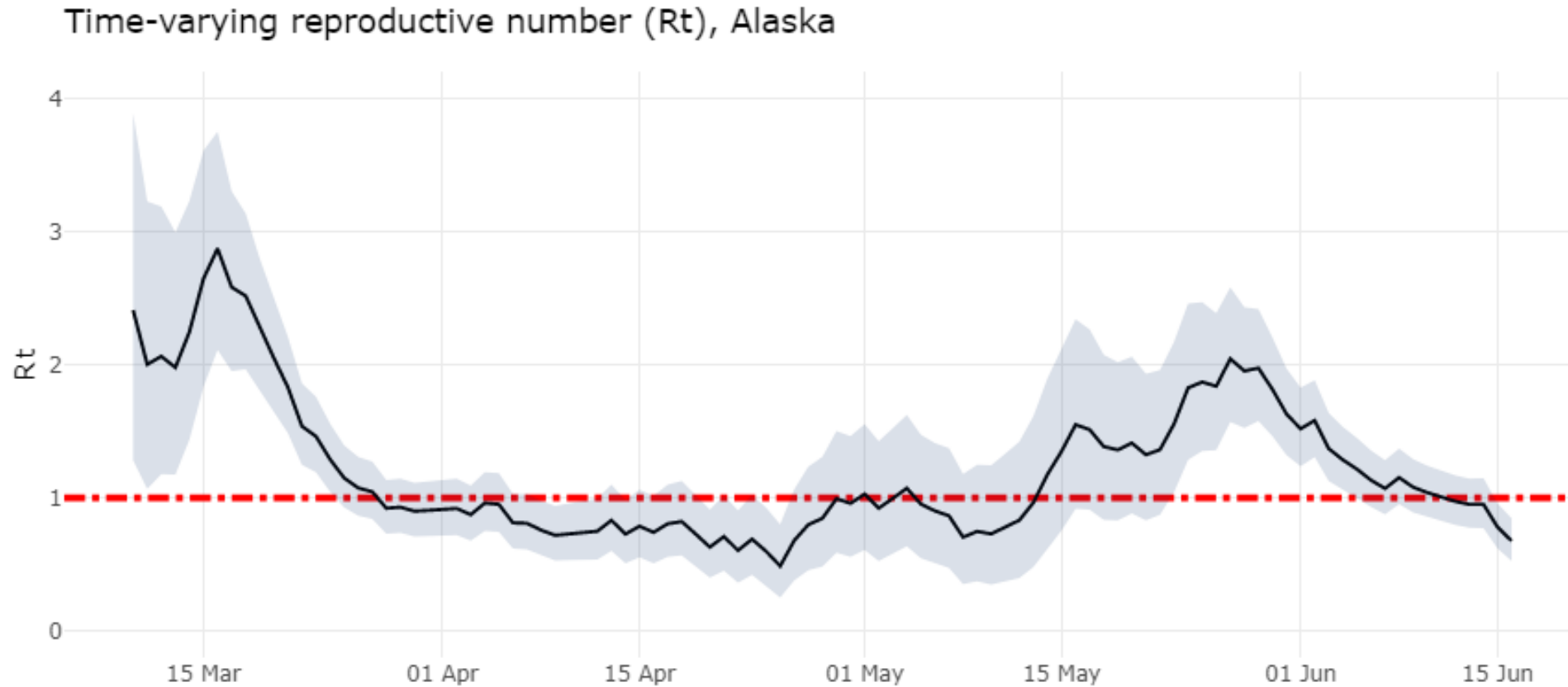
Cumulative Cases – June 23, 2020

AK resident cases: 778
Nonresidents: 129
Total hospitalized: 63
Total deaths: 12
Total recovered: 502

Cumulative Cases by Death, Recovered, and Active Status

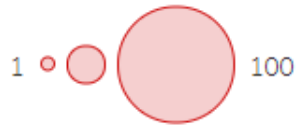


Time-varying Reproductive Number

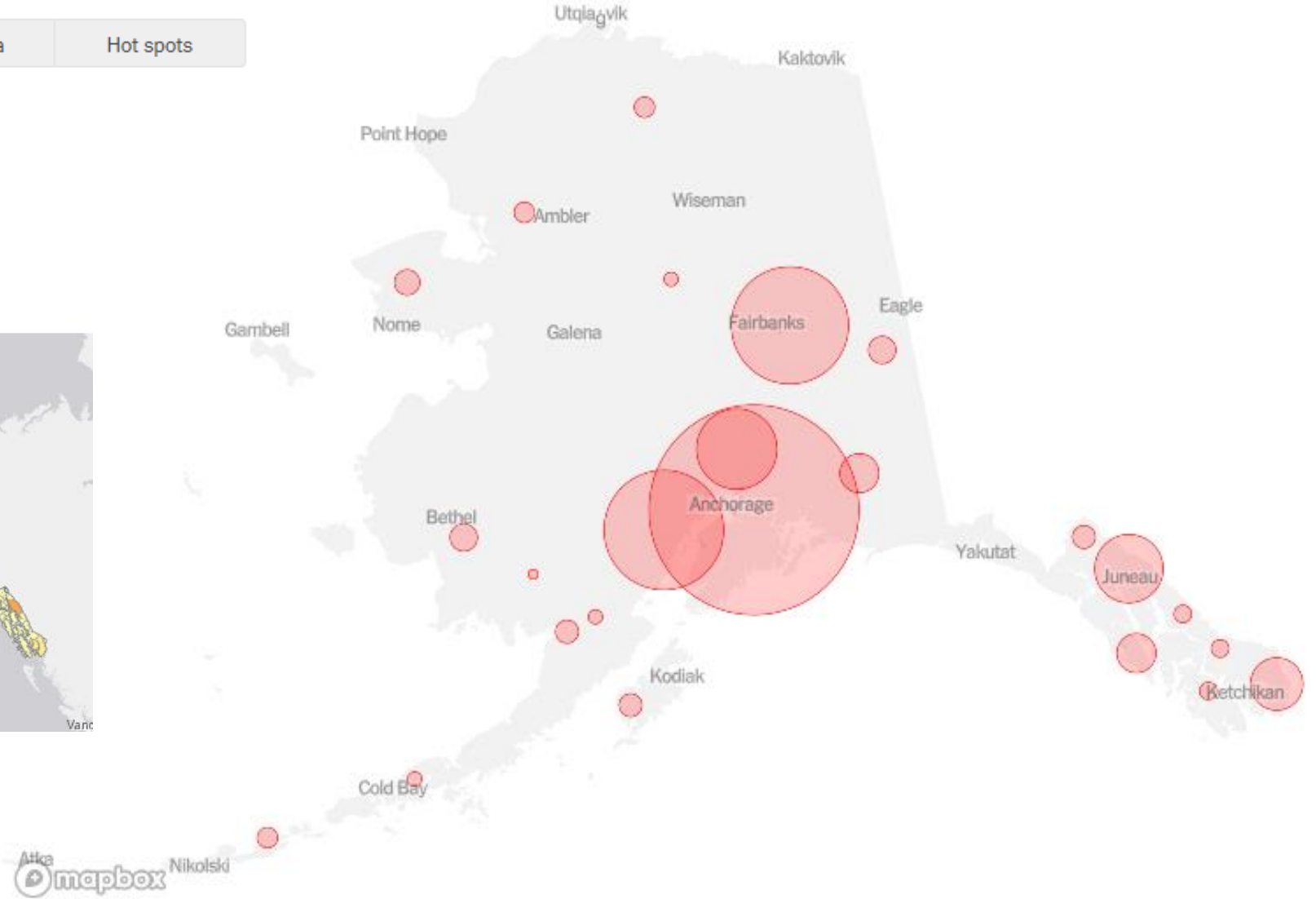
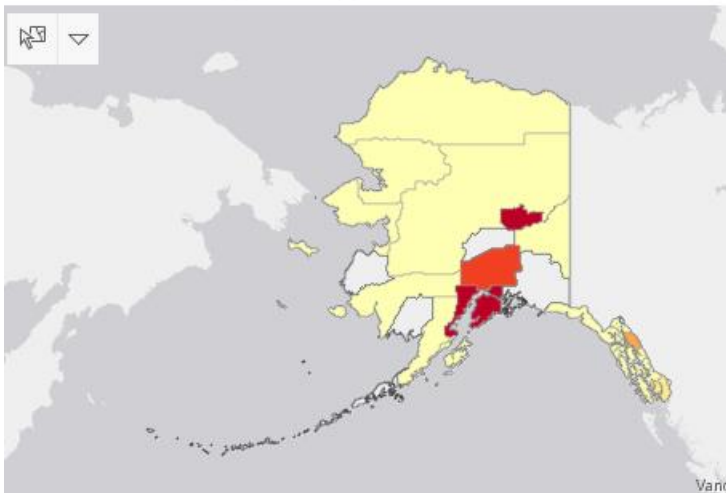


Cases in Alaska

Total cases	Deaths	Per capita	Hot spots
-------------	--------	------------	-----------



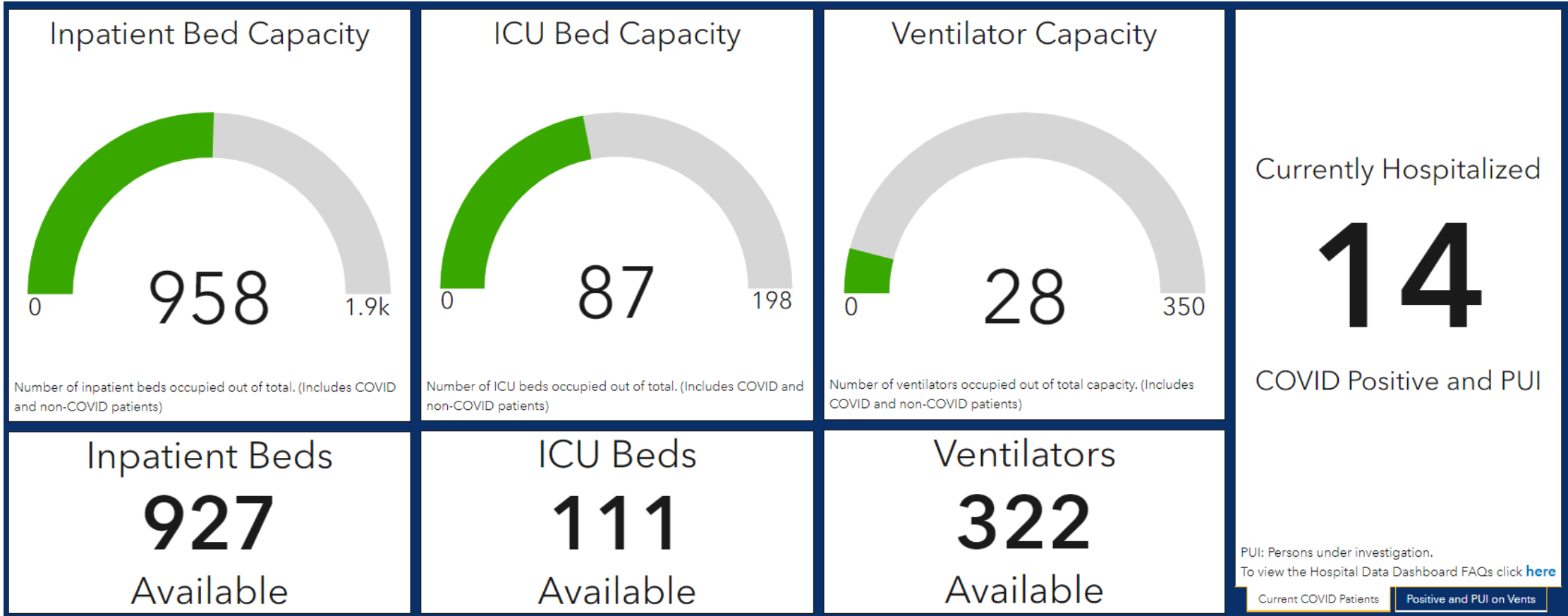
AK COVID-19 Cases by Residency



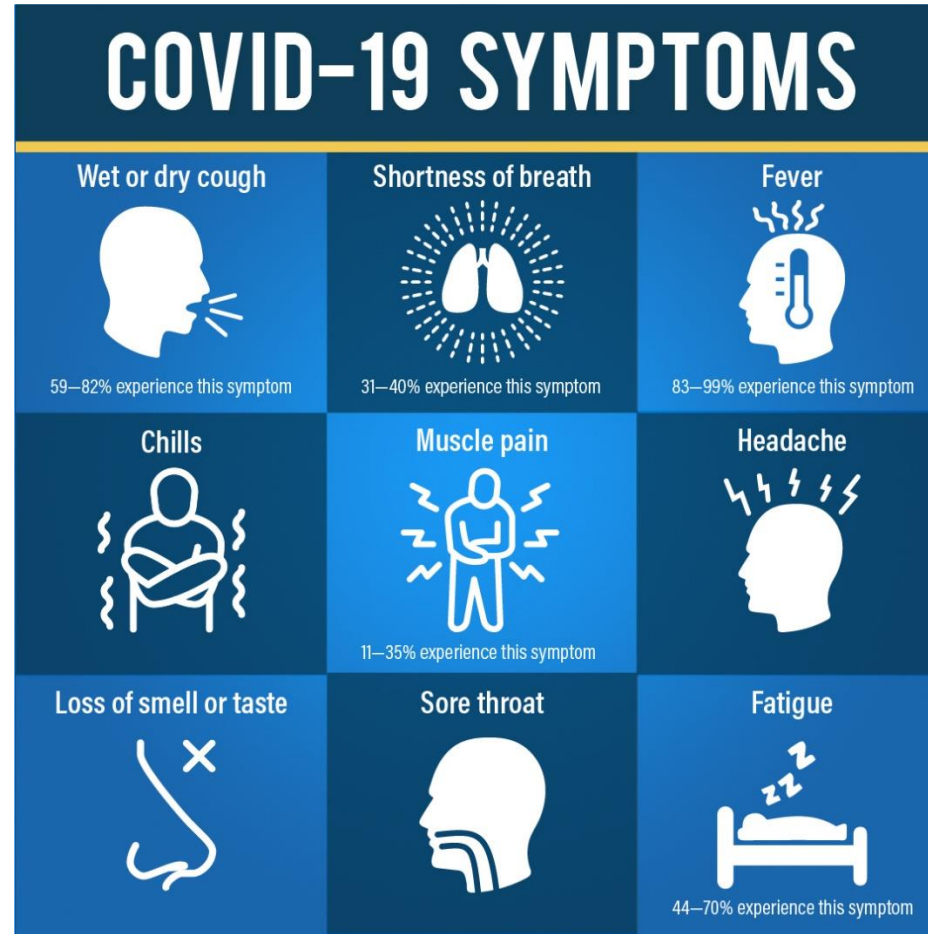
Hospital Capacity

Inpatient beds
ICU beds
Ventilators

51% capacity
44% capacity
8% capacity



COVID-19 Signs and Symptoms



Our Goal: Widespread, Simple, Affordable Testing

- Widespread, easy and accessible testing for anyone who is symptomatic
- Asymptomatic testing
 - Pre-procedural
 - Pre-dental
 - Admission to health care facilities
 - Congregate settings (i.e. long-term care facilities)
 - Travel-associated
 - Outbreak investigations



Supporting Alaskans Through COVID

As Alaska reopens, you can slightly expand your social bubble.



Create an agreement with another trusted household for more social support. Keep your bubble small and consistent. Outside your bubble, keep staying 6 feet away from others.

As Alaska reopens, you can slightly expand your social bubble.



Maintain a small bubble for now. Include others cautiously. Pick a workout buddy or jogging partner and exercise with the same person consistently.

As Alaska reopens, some people may need to keep their social bubbles small.





Individuals at high risk for serious illness or those whose work brings them in contact with high risk individuals may not want to expand their social bubbles at all to minimize exposure to others.


Supporting Businesses Through COVID

COMMITMENT TO OUR CUSTOMERS

WE CARE ABOUT OUR COMMUNITY AND SUPPORT THE FOLLOWING STEPS TO LIMIT THE SPREAD OF COVID-19

- STAY 6 FT. APART**
Social distancing for employees and customers, stay at least 6 feet apart.
- 
Frequent hand washing with soap and water for at least 20 seconds or the use of hand sanitizer.
- 
Community wide masking. Our masks protect you, your mask protects us.

Help keep Alaska safe by supporting the practices of staying home as much as possible, social distancing, hand and face hygiene, and wearing a cloth face covering.



Made by Foundation Health Partners, Alaska Department of Health and Social Services, and Alaska Department of Commerce, Community, and Economic Development.

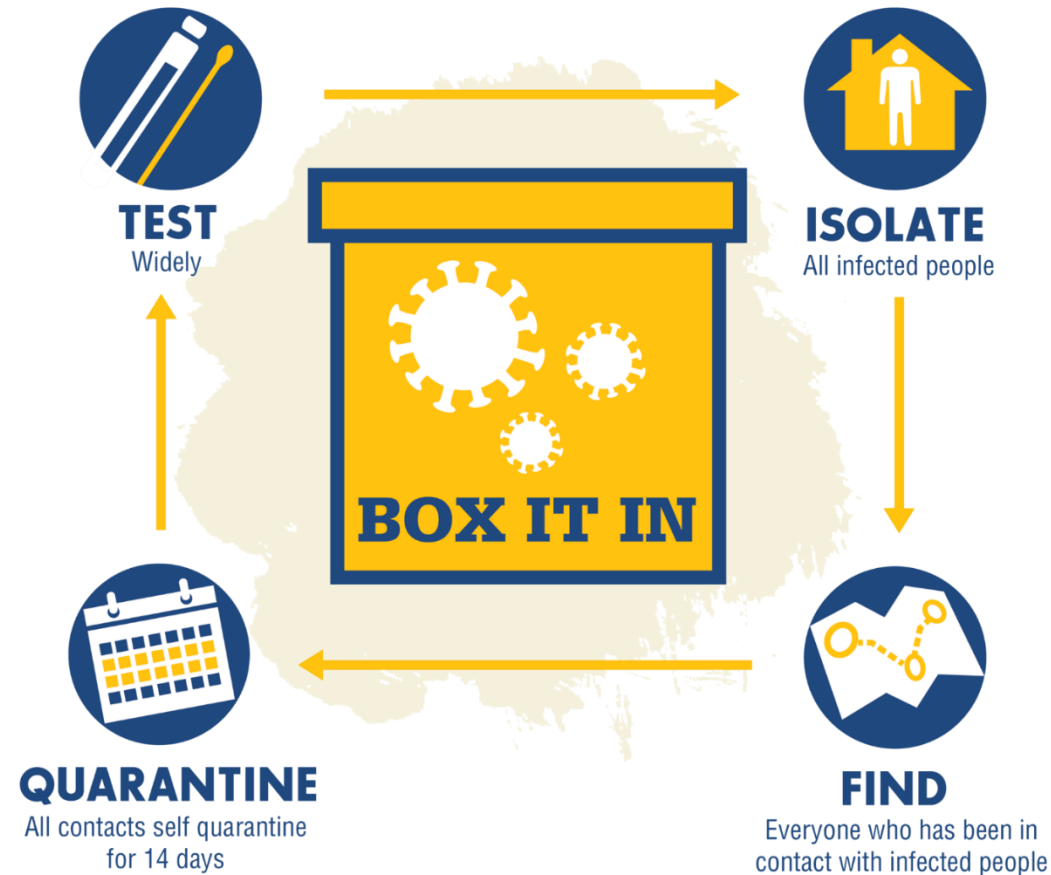


Epidemiology

Dr. Joe McLaughlin, State Epidemiologist, Division of Public Health, DHSS

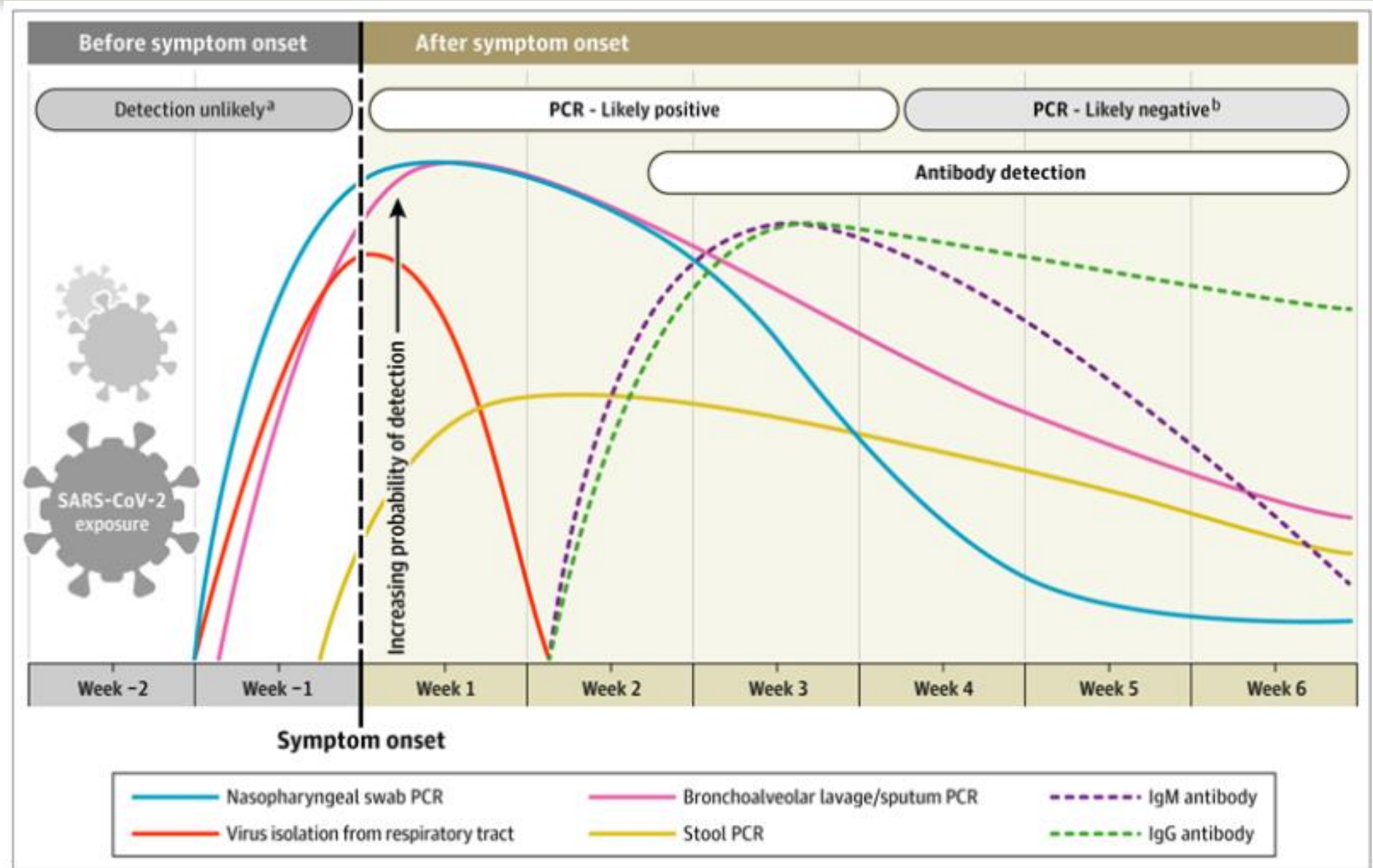
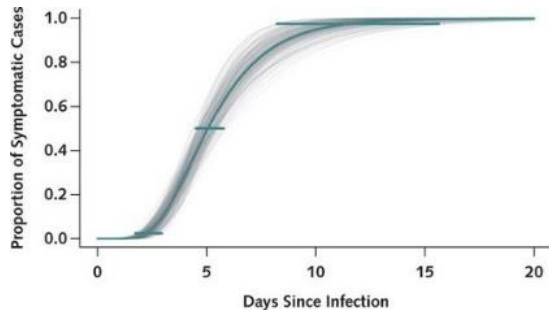
Contact Tracing and Case Investigations

Keep a lid on COVID.



Types of Testing

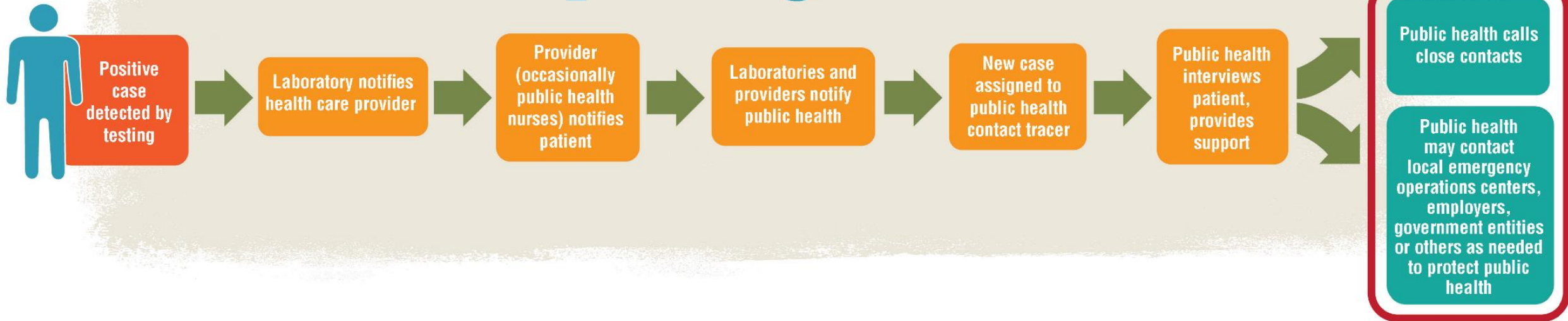
- Molecular
- PCR
- Antigen
- Antibody



Notification of Patients and Communities

Reporting Process

DHSS may only share protected health information in accordance with federal HIPAA law and Alaska DHSS Permitted Disclosures regulations (7 AAC 27.893).



Outbreaks – Definition and Response

Definition: **Two or more** laboratory-confirmed COVID-19 cases among a population with onset dates within a 14-day period, who are epidemiologically linked, do not share a household, and were not identified as close contacts of each other in another setting during standard case investigation or contact tracing.



Immunity and Repeat Infection



Vaccination



Contact Tracing Surge Capacity

Tari O'Connor, Deputy Director, Division of Public Health, DHSS

Status, Targets, Partners

	Prior to COVID-19 response	Now	Target
Contact tracers	Approx 70	Approx 140	500
Partners	<ul style="list-style-type: none"> • State of Alaska Public Health Nursing • Section of Epidemiology • Anchorage Health Department 	Add <ul style="list-style-type: none"> • Anchorage School District • Yukon Kuskokwim Health Corporation • ANTHC Epidemiology Center • Maniilaq Association • North Slope Borough • Fairbanks Memorial Hospital • CDC Arctic Investigations Program • Alaska National Guard/Air National Guard • Kenai Peninsula Borough School District 	Add <ul style="list-style-type: none"> • University of Alaska Anchorage • Juneau School District • Fairbanks North Star Borough School District • Matanuska-Susitna Borough School District • Community Health Centers/Federally Qualified Health Centers/Tribal Health Organizations

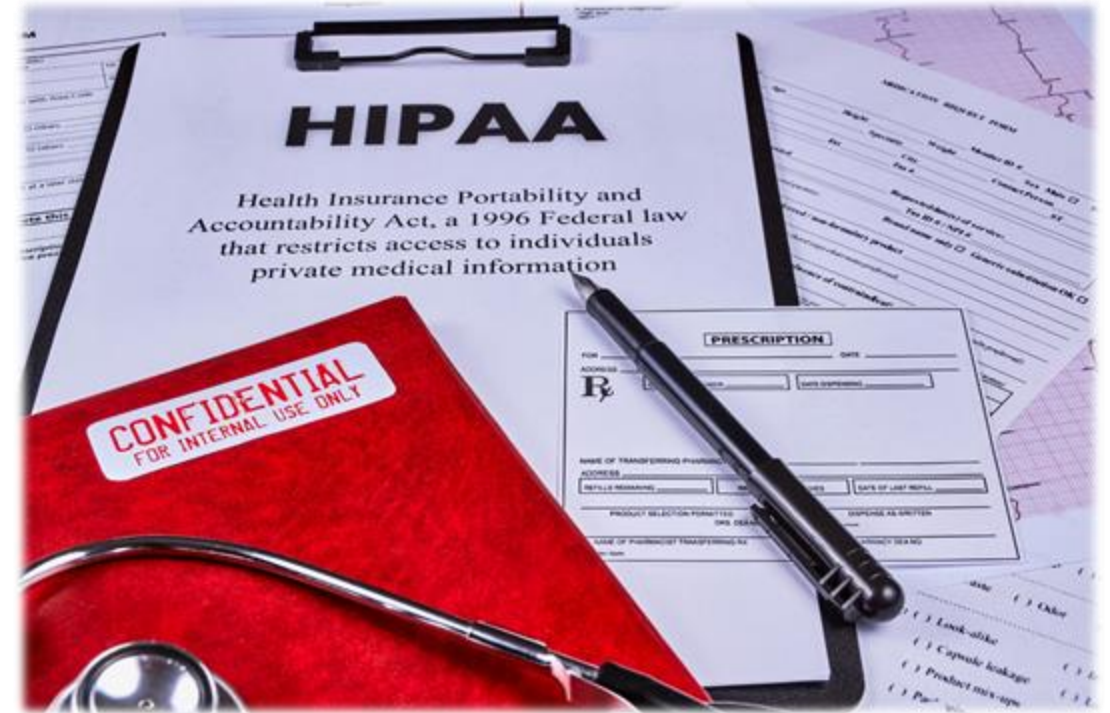
Infrastructure

- Training and onboarding
 - UAA College of Health
- Case/contact management tool (CommCare/DiMagi)
 - Manage case and contact information
 - Coordinate staff assignments
 - Support quality assurance/quality improvement
- Security and confidentiality



Priorities

- Coordination
- Quality
- Confidentiality and privacy
- Scalability
- Build capacity Alaska can use for future responses

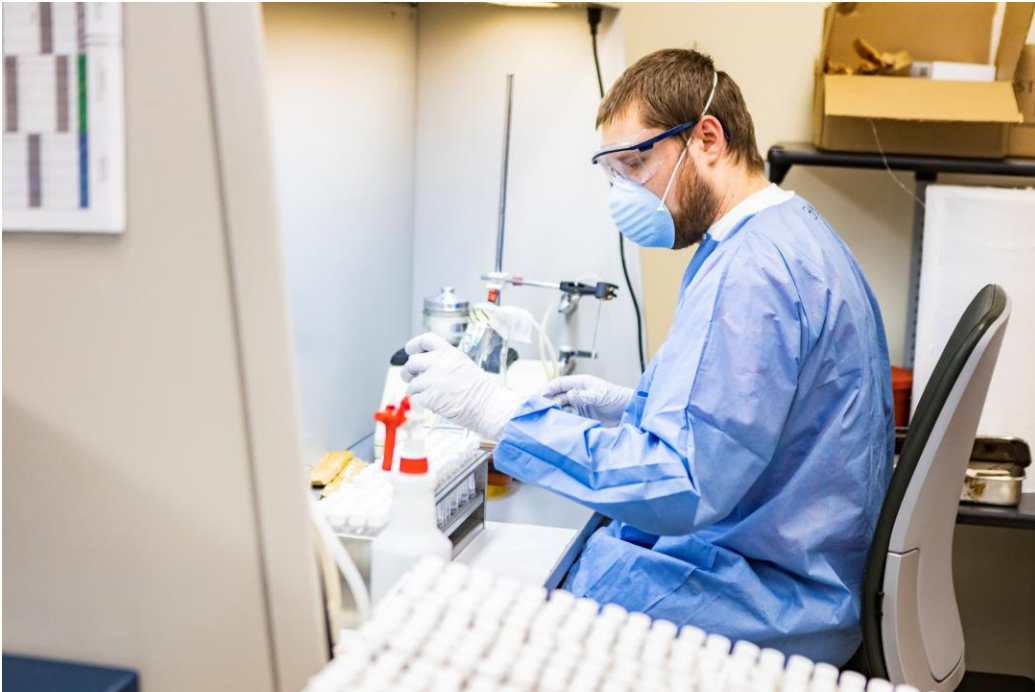


Testing

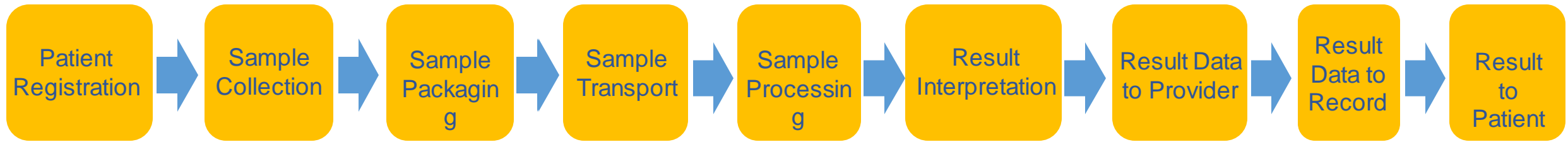
Dr. Coleman Cutchins, Pharmacist and COVID Testing Coordinator, DHSS

Testing in Alaska

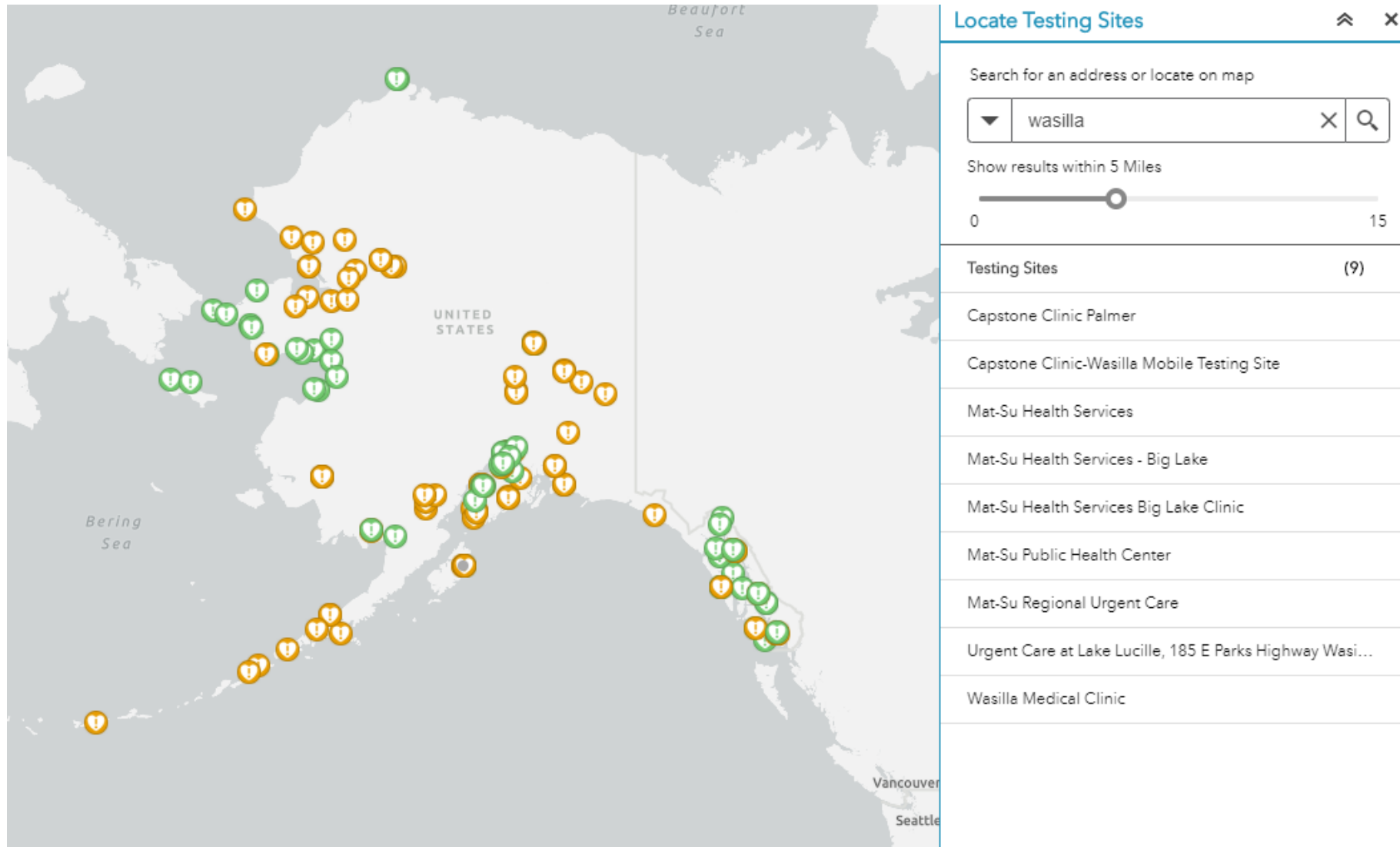
- Viral RNA testing
- Rapid tests
- State public health laboratories
- Commercial laboratories



Testing in Alaska

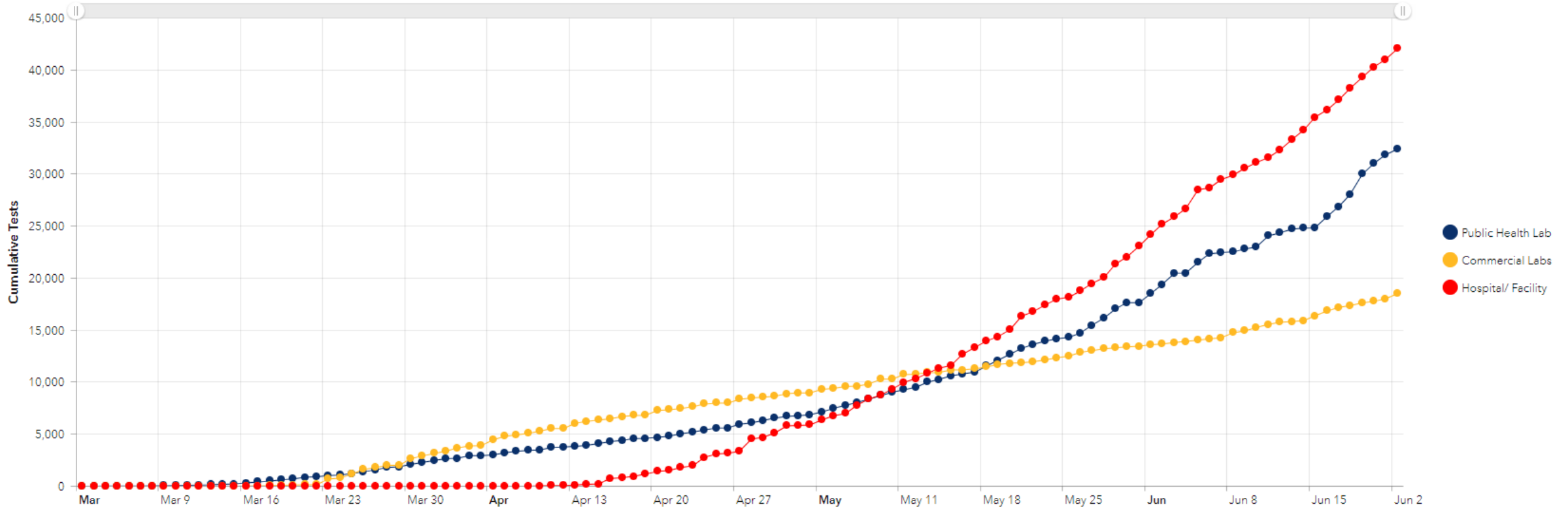


Testing Sites in Alaska



Statewide Cumulative Tests by Day

Statewide Cumulative Tests by Day

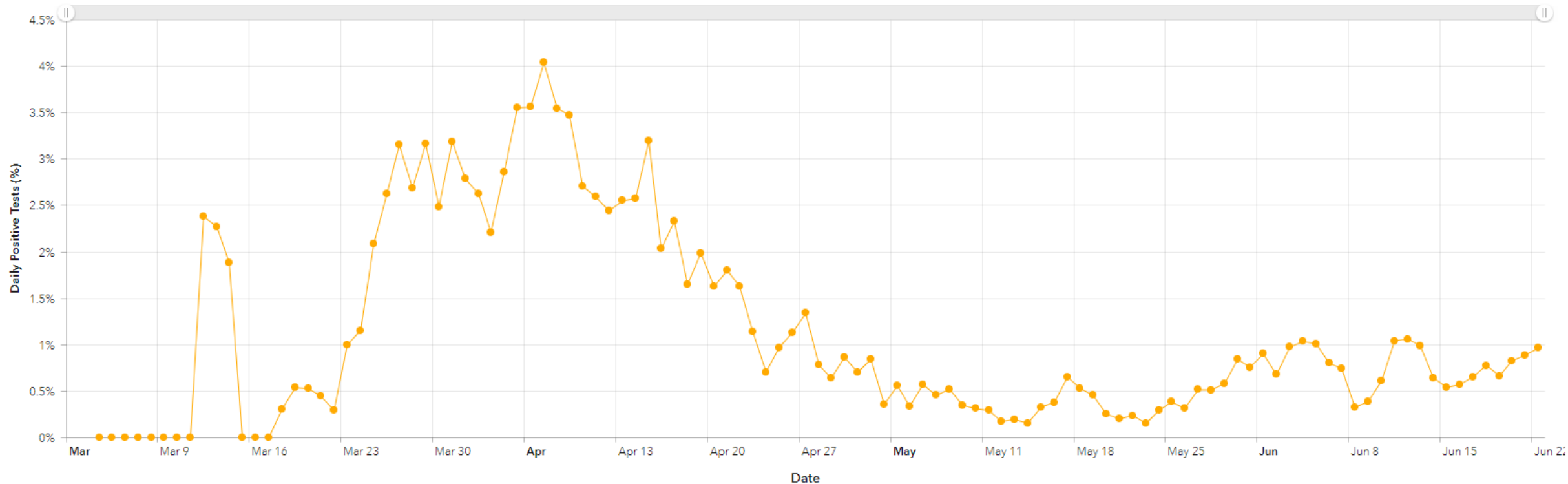


Does not include serology tests (e.g. antibody blood tests). Public Health Lab results may be delayed up to two days.

Daily Test Positivity

Statewide Percentage of Daily Tests with Positive Results

(Three day rolling average)

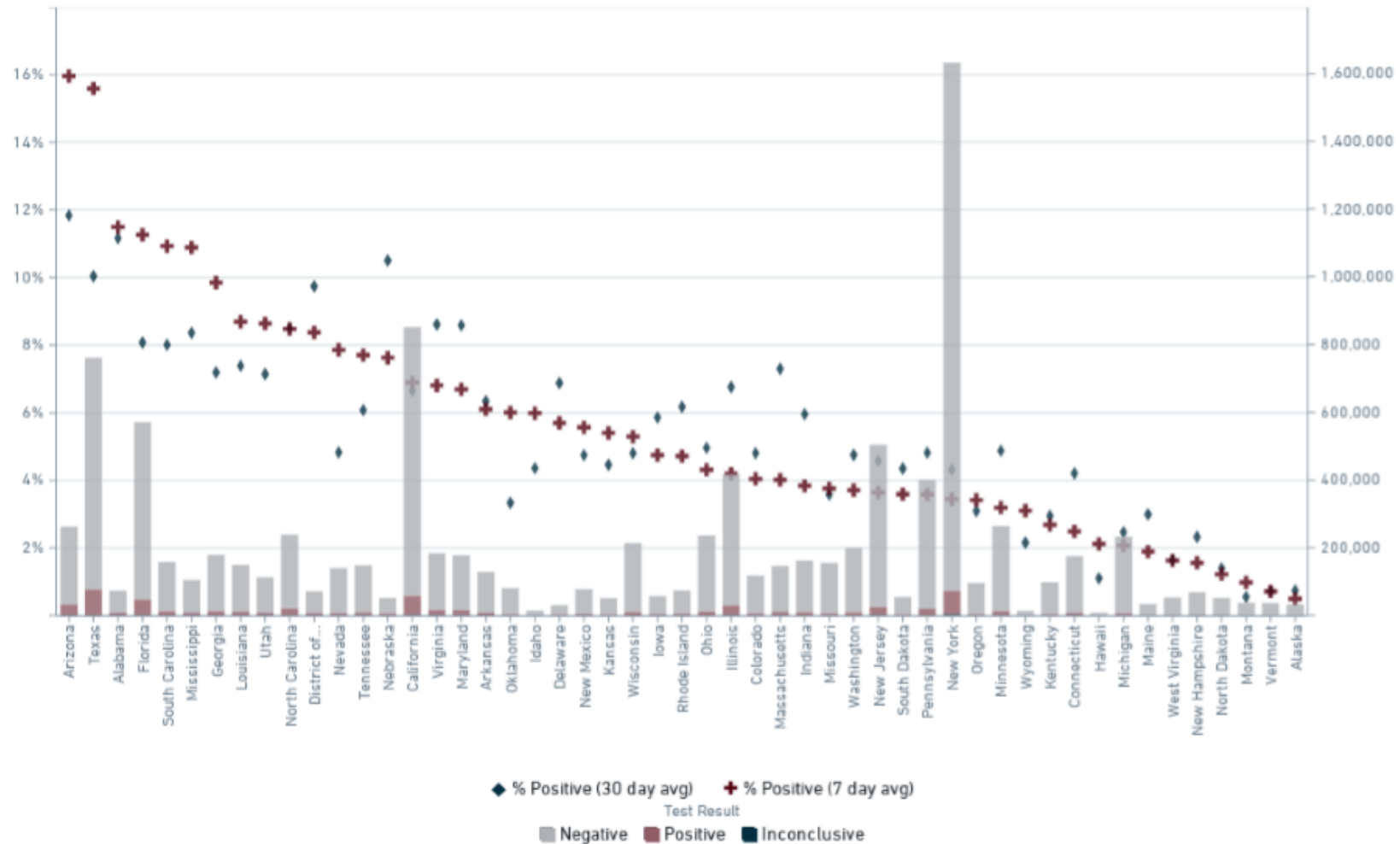


Does not include serology tests (e.g. antibody blood tests). Public Health Lab results may be delayed up to two days.

Alaska Ranks #7 in Testing, Compared to Other States Per Capita

USA State	Total Cases	New Cases	Total Deaths	New Deaths	Active Cases	Tot Cases/ 1M pop	Deaths/ 1M pop	Total Tests	Tests/ 1M pop
Rhode Island	16,533	+74	906	+3	14,065	15,607	855	222,163	209,714
New York	412,636	+664	31,314	+46	293,987	21,211	1,610	3,500,999	179,967
New Jersey	172,960	+570	13,081	+51	121,801	19,473	1,473	1,283,451	144,497
New Mexico	10,838	+144	476	+7	5,488	5,169	227	302,083	144,067
Louisiana	51,713	+1,474	3,142	+25	8,779	11,124	676	635,939	136,797
North Dakota	3,320	+7	78	+1	234	4,357	102	97,453	127,881
Alaska	778	+17	12		264	1,064	16	92,947	127,056
Massachusetts	107,439	+229	7,890	+16	10,824	15,588	1,145	848,167	123,056
District Of Columbia	10,094	+36	537	+2	8,375	14,303	761	83,302	118,033
Connecticut	45,899	+117	4,277	+14	32,461	12,874	1,200	403,944	113,299

Positive and negative cumulative results in the last 30 days per state with % positive per state



Data from state public health labs, commercial labs, and hospitals. Some data may still coming in for the most recent 3 days. This chart is sorted by the 7-day percent positive.

Reopening Alaska Responsibly Data-informed Mandates and Health Alerts

Adam Crum, Commissioner, DHSS

Purpose of Mandates vs. Health Alerts

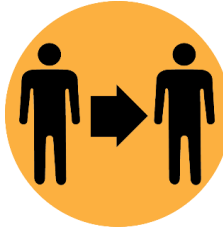
There are a few things we strongly advise all Alaskans do to minimize the risk of COVID-19

- Wash your hands
- Wear a mask when around others
- Stay at least 6 feet away from others when possible
- Keep your interactions and circles small when possible.
- Even for mild symptoms get tested.

At this time, the State of Alaska does not mandate the general use of masks, limit group size, or business operations, but does encourage Alaskans to do their part to limit the spread of COVID-19.

- Mask wearing is not mandated, but encouraged. Health and science experts recommended that you wear a mask in public where social distancing is challenging to reduce the likelihood that you unknowingly spread COVID-19.
- Private companies and entities can enact their own requirements.
- Local communities can enact their own restrictions. Check with local communities as it pertains to non-essential travel off of the road system. Alaska has many small and remote communities that lack a robust healthcare system and they may restrict non-essential travel.

Monitoring Metrics



Metric	What we need to achieve to safely move to a less restrictive phase
Disease activity	A consistently declining or stable level of COVID-19 activity in Alaska
Testing capacity	Enough capacity and access for quick and sufficient COVID-19 testing
Public health capacity	Enough capacity to investigate, contact trace, and monitor everyone with COVID-19, plus their contacts
Health care capacity	Enough space, equipment, and supplies for personnel to safely and effectively care for everyone with COVID-19, plus everyone else who needs health care

Resources

Heidi Hedberg, Director, Division of Public Health, DHSS

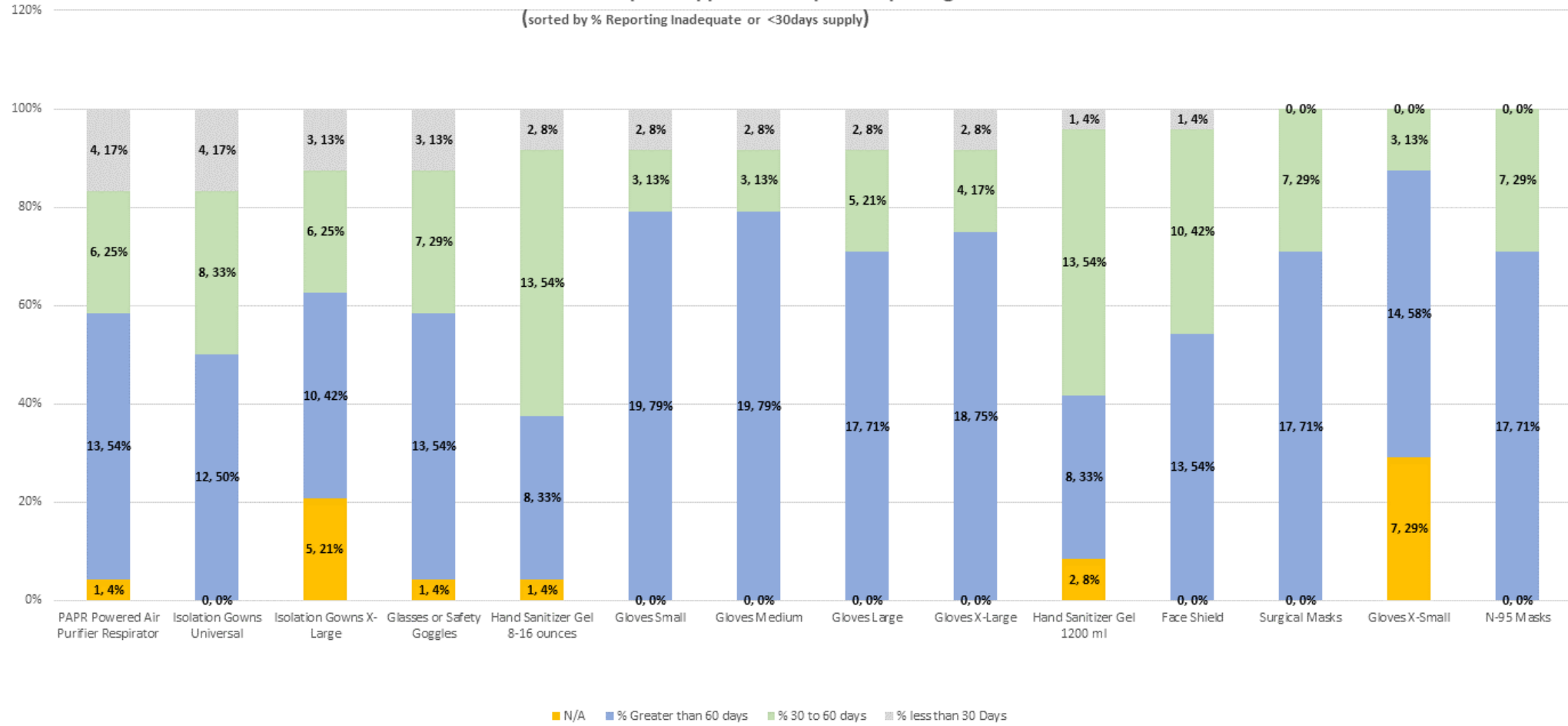
Supply Status

- Initial attempts to procure PPE in March and April were challenging - shortages in almost all PPE categories
- Current PPE supply lines are more open but have not returned to normal
- State inventory is stable for PPE
 - Allocations required to meet ongoing requests
- Resources from commercial, in-state manufacturing and FEMA



6-22-2020 Alaska Hospital Supplies 24 Hospitals Reporting

(sorted by % Reporting Inadequate or <30days supply)



Resource Request Process

Health care facility attempts to procure item through commercial supply line/multiple vendors—item is unavailable



Health care facility submits a resource request to Local Emergency Management



Local Emergency Management fills the resource request or, if no sufficient resources, submits to the State Emergency Operations Center



State Emergency Operations Center assigns the Resource Request to DHSS—DHSS fulfills dependent upon availability of item and quantity available

Note: Federal facilities, state-run facilities, and tribal health facilities may follow slightly modified request pathways.

Medical Supply Shipments to Date



- DHSS has shipped the following key resources as of 6/22/2020
 - **965,100 Gloves**
 - **80,557 Surgical Masks**
 - **77,187 N95 Masks**
 - **46,381 Gowns**
 - **28,339 Face Shields**
 - **60,368 Swabs**
 - **35,479 Universal Transport Media/Viral Transport Media**
 - **5,640 Abbott ID Tests**
 - **15,604 Collection Kits**
 - **285 gallons of Hand Sanitizer**
- Additional resources deployed include Tyvek suits, goggles, thermometers, cloth facial coverings, bleach wipes, and other critical supplies



- Questions regarding DHSS COVID response, including mandates and alerts, can be sent to: covidquestions@alaska.gov.
- Questions regarding DHSS data can be sent to: data.coronavirus@alaska.gov
- For general questions, contact 2-1-1 or 1-800-478-2221. Extended call center hours: 7 a.m. – 8 p.m., 7 days a week.

Questions?