



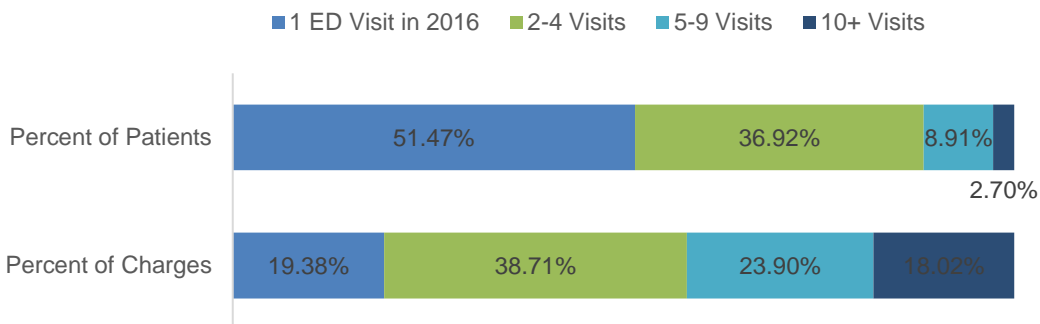
Alaska Medicaid Facts and Figures

2016 Emergency Department Super-utilizer Facts

At least 68,898 unique patients visited the Emergency Department (ED) in 2016, or about one in three Medicaid patients. This accounts for a total of 169,128 visits and total billed charges of \$233,890,741.27. Medicaid claims provided by the State Fiscal Agent¹ were used in this analysis.²

Half of the patients (51.47%) only visited the ED one time during the year, and 88.39% of patients visited four or fewer times. Patients who visited the ED five or more times in a calendar year, sometimes referred to as "super-utilizers," made up 11.61% (7,996) of patients. The top 2.7% (1,858) most frequent ED users each visited the ED at least 10 times in 2016. Twenty-four individual patients each had over 50 visits during the year, and 183 patients had at least 25 visits.

Individuals who use the ED frequently contribute disproportionately to total charges. The top 2.7% of users account for 18.02% of charges (\$42 million), and the top 11.6% of users account for 41.9% of charges (\$98 million).



Mean charges per visit were \$1,277.99 for patients who went to the ED only one time in the year. For patients with two or more ED visits in the year, mean charges per visit were \$1,410.76.

The most common principal diagnoses among the top 2.7% of patients were alcohol-related disorders, abdominal and pelvic pain, pain in throat and chest, dorsalgia (back pain), other joint disorder, not elsewhere classified, cellulitis and acute lymphangitis, nausea and vomiting, other and unspecified soft tissue disorders, not elsewhere classified, abnormalities of heart beat, and headache. The most common principal diagnosis for the overall population is abdominal and pelvic pain.

The following comparisons are between the general ED population (all patients, all visits) and the 1,858 patients who each visited the ED 10 or more times during the year.

The overall ED patient population was 56% female and 44% male, while the top 2.7% of ED patients was 61% female and 39% male.

¹ The State Fiscal Agent, Conduent provides MedExpert International, Inc. all claims on a monthly basis under the AMCCI Contract.

² ER Claims are identified as claims with a CPT4 code of 99281, 99282, 99283, 99284, 99285 and/or a revenue code of 0450 or 0451. An ED visit is identified by the distinct combination of a patient on a given date of service in the ER. Should a person visit the ED twice on the same day, it would be considered one visit. If there are professional claims for multiple consecutive days in the ER, each day would count as a visit.

In both the overall ED population and the top 2.7% of users, Monday is the most common day of the week. Neither group shows much use variation between days of the week.

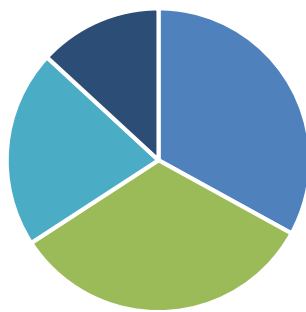
Admission Days of the Week

	Sunday	Monday	Tuesday	Wednesday	Thursday	Friday	Saturday
Total ED patients	47,044	49,900	48,245	48,284	46,624	48,011	47,574
Top 2.7% of patients	8,429	8,989	8,884	8,695	8,527	8,847	8,736

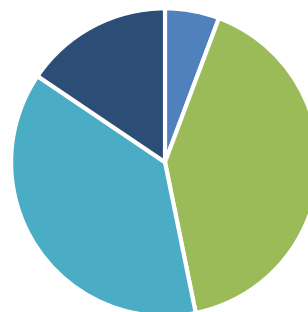


The top 2.7% of users were more likely to be in the 20-59 age group. While 33% of the general patient population was aged 19 or under, only 5.7% of the most frequent users were in this age group.

Total ED patients



Top 2.7% of patients



- Age 0-19
- Age 20-39
- Age 40-59
- Age 60+

In the overall patient population 5.04% of all ED visits resulted in a hospital admission. In the top 2.7% of users this percent was slightly lower at 4.82%.^[1]

^[1] Hospital admissions were determined by an inpatient claim with a service start date equal to or one day after the service end date of a professional claim with a CPT4 code of 99281, 99282, 99283, 99284, or 99285.