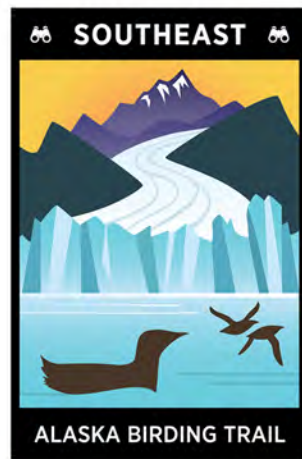


SOUTHEAST ALASKA BIRDING TRAIL

Southeast Alaska is a fantastic place to go birding! It boasts more than 350 bird species, including the highest densities of Marbled Murrelets and Bald Eagles in the world. In spring, hundreds of thousands of shorebirds stop to feed here on their way to the Arctic. And, birds found nowhere else on Earth inhabit the region's ancient forests.

Audubon Alaska worked closely with the U.S. Forest Service, Juneau Audubon Society, and many regional bird experts from local communities to create the Southeast Alaska Birding Trail. This online resource helps bird enthusiasts plan a safe, easy, and fun birding adventure in Southeast Alaska while supporting local communities.



Juneau Birding Sites

The region's largest community, Juneau, is an obvious choice for inclusion on the Southeast Alaska Birding Trail with easy access to a diverse set of landscapes and hosting a wide range of bird species. The trail includes nineteen sites in the area, including Juneau town center and Mendenhall Glacier.

The numerous birding trail locations highlight different habitats and bird species. Plus, there are options for bird enthusiasts of all ages and skill levels. Checklists can be found on the website, as well as travel information, and other resources.

Visit ak.audubon.org/southeast-alaska-birding-trail.

