



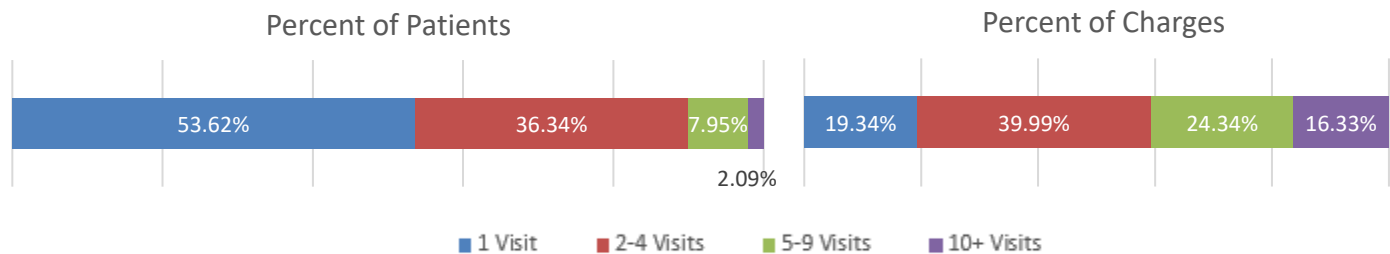
Alaska Medicaid Facts and Figures

FY2019 Emergency Department Super-utilizer Facts

At least 62,284 unique patients visited the Emergency Department (ED) in 2019, or about one in four Medicaid patients. This accounts for a total of 141,674 visits and total paid charges of \$280,985,970.09. Medicaid claims from Health Enterprise¹ were used in this analysis.²

Half of the patients (53.62%) visited the ED one time during the year, and 89.97% of patients visited four or fewer times. Patients who visited the ED five or more times in a calendar year, sometimes referred to as "super-utilizers," made up 10.03% (6,250) of patients. The top 2.09% of ED users (1,301) visited the ED at least 10 times in 2019. One hundred-six patients had 25 or more visits, and seven individual patients exceeded 50 visits during the year.

Individuals who use the ED frequently contribute disproportionately to total charges. The top 2.09% of users account for 16.3% of charges (\$46 million), and the top 10.03% of users account for 40.67% of charges (\$114 million).



Mean charges per visit were \$1,564.67 for patients who went to the ED only one time in the year. For patients with two or more ED visits in the year, mean charges per visit were \$2,093.26. Table 1 (below) displays the most common ICD10 codes for the top 2.09% of ED patients. Table 2 (below) show top ICD10 codes for all other users of the ED.

Table 1. Top 2.09% Patients (>10 Visits)

ICD 10	Description	Visit Count
F10.129	Alcohol abuse with intoxication, unspecified	1,608
R07.9	Chest pain, unspecified	839
R07.89	Other chest pain	762
R00.0	Tachycardia, unspecified	733
F10.239	Alcohol dependence with withdrawal, unspecified	610
R11.2	Nausea with vomiting, unspecified	556
R10.9	Unspecified abdominal pain	515
J06.9	Acute upper respiratory infection, unspecified	464
R51	Headache	447
M54.5	Low back pain	410

Table 2. Patients With <10 Visits

ICD 10	Description	Visit Count
J06.9	Acute upper respiratory infection, unspecified	7,129
R50.9	Fever, unspecified	3,743
J02.9	Acute pharyngitis, unspecified	3,176
R07.89	Other chest pain	3,170
R51	Headache	2,855
R07.9	Chest pain, unspecified	2,791
R11.2	Nausea with vomiting, unspecified	2,584
R10.9	Unspecified abdominal pain	2,498
F10.129	Alcohol abuse with intoxication, unspecified	2,370
M54.5	Low back pain	2,062

¹ Cognos claim pull from MMIS on January 14, 2020.

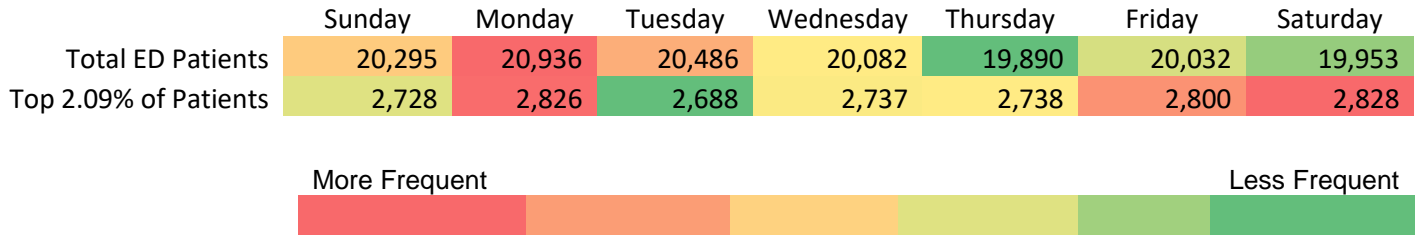
² ER Claims are identified as claims with a CPT4 code of 99281, 99282, 99283, 99284, 99285 and/or a revenue code of 0450 or 0451. An ED visit is identified by the distinct combination of a patient on a given date of service in the ER. Should a person visit the ED twice on the same day, it would be considered one visit. If there are professional claims for multiple consecutive days in the ER, each day would count as a visit.

The following comparisons are between the general ED population (all patients, all visits) and the 1,301 patients who each visited the ED 10 or more times during the year.

The overall ED patient population was 54% female and 46% male, while the top 2.09% of ED patients was 58% female and 42% male.

The top 2.09% of ED users present to the ED Saturday (2,828 visits) and Monday (2,826 visits) most frequently; among all ED users, Monday is the most common day of the week. Neither group shows significant variation between days of the week for ED use.

ED Visits Days of the Week



The top 2.09% of users were more likely to be in the 20-59 age groups (83%). Thirty-nine percent of the general patient population was aged 19 or under, only 10% of the frequent users were in this age group.

