



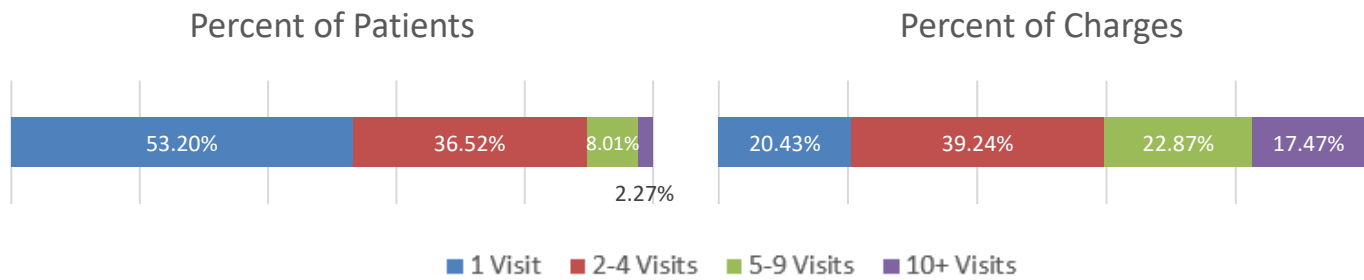
Alaska Medicaid Facts and Figures

FY2018 Emergency Department Super-utilizer Facts

At least 62,704 unique patients visited the Emergency Department (ED) in 2018, or about one in four Medicaid patients. This accounts for a total of 145,432 visits and total paid charges of \$246,365,108.43. Medicaid claims from Health Enterprise¹ were used in this analysis.²

Half of the patients (53.20%) visited the ED one time during the year, and 89.72% of patients visited four or fewer times. Patients who visited the ED five or more times in a calendar year, sometimes referred to as "super-utilizers," made up 10.28% (6,446) of patients. The top 2.27% of ED users (1,421) visited the ED at least 10 times in 2018. One hundred-twenty-seven patients had 25 or more visits, and thirteen individual patients exceeded 50 visits during the year.

Individuals who use the ED frequently contribute disproportionately to total charges. The top 2.27% of users account for 17.4% of charges (\$43 million), and the top 10.28% of users account for 40.34% of charges (\$99 million).



Mean charges per visit were \$1,508.53 for patients who went to the ED only one time in the year. For patients with two or more ED visits in the year, mean charges per visit were \$1,749.23. Table 1 (below) displays the most common ICD10 codes for the top 2.27% of ED patients. Table 2 (below) show top ICD10 codes for all other users of the ED.

Table 1. Top 2.27% Patients (>10 Visits)

ICD 10	Description	Visit Count
F10.129	Alcohol abuse with intoxication, unspecified.	2,531
F10.239	Alcohol dependence with withdrawal, unspecified.	1,053
R07.89	Other chest pain.	783
R07.9	Chest pain, unspecified.	765
R00.0	Tachycardia, unspecified.	630
R51	Headache.	557
F10.929	Alcohol use, unspecified with intoxication, unspecified.	522
R10.9	Unspecified abdominal pain.	512
J06.9	Acute upper respiratory infection, unspecified.	506
R11.2	Nausea with vomiting, unspecified.	461

Table 2. Patients With <10 Visits

ICD 10	Description	Visit Count
J06.9	Acute upper respiratory infection, unspecified.	7,263
R50.9	Fever, unspecified.	3,685
R07.89	Other chest pain.	3,101
J02.9	Acute pharyngitis, unspecified.	2,931
R51	Headache.	2,730
R07.9	Chest pain, unspecified.	2,525
R11.2	Nausea with vomiting, unspecified.	2,457
F10.129	Alcohol abuse with intoxication, unspecified.	2,405
J18.9	Pneumonia, unspecified organism.	2,347
B34.9	Viral infection, unspecified.	2,325

¹ Cognos claim pull from MMIS on January 22, 2020.

² ER Claims are identified as claims with a CPT4 code of 99281, 99282, 99283, 99284, 99285 and/or a revenue code of 0450 or 0451. An ED visit is identified by the distinct combination of a patient on a given date of service in the ER. Should a person visit the ED twice on the same day, it would be considered one visit. If there are professional claims for multiple consecutive days in the ER, each day would count as a visit.

The following comparisons are between the general ED population (all patients, all visits) and the 1,421 patients who visited the ED 10 or more times during the year.

The overall ED patient population was 54% female and 46% male, while the top 2.27% of ED patients was 57% female and 43% male.

The top 2.27% of ED users present to the ED most frequently on Monday (2,826 visits); among all ED users, Monday is also the most common day of the week. Neither group shows significant variation between days of the week for ED use.

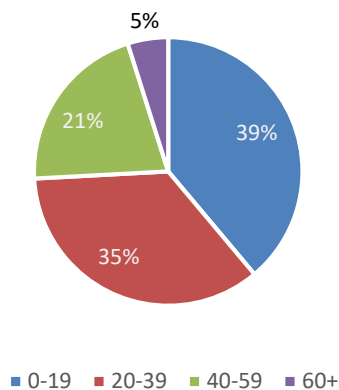
ED Visits Days of the Week

	Sunday	Monday	Tuesday	Wednesday	Thursday	Friday	Saturday
Total ED Patients	20,615	21,713	20,975	20,540	20,214	20,362	21,013
Top 2.27% of Patients	3,027	3,237	3,180	3,184	3,116	3,092	3,069



The top 2.27% of users were more likely to be in the 20-59 age groups (82%). Thirty-nine percent of the general patient population was aged 19 or under, only 12% of the frequent users were in this age group.

Total ED Patients



Top 2.27% of Patients

