

Residential Schools Program

Alaska Department of Education & Early Development
Finance and Support Services
Heidi Teshner, Division Director

House Finance Subcommittee
January 31, 2020



OUR MISSION

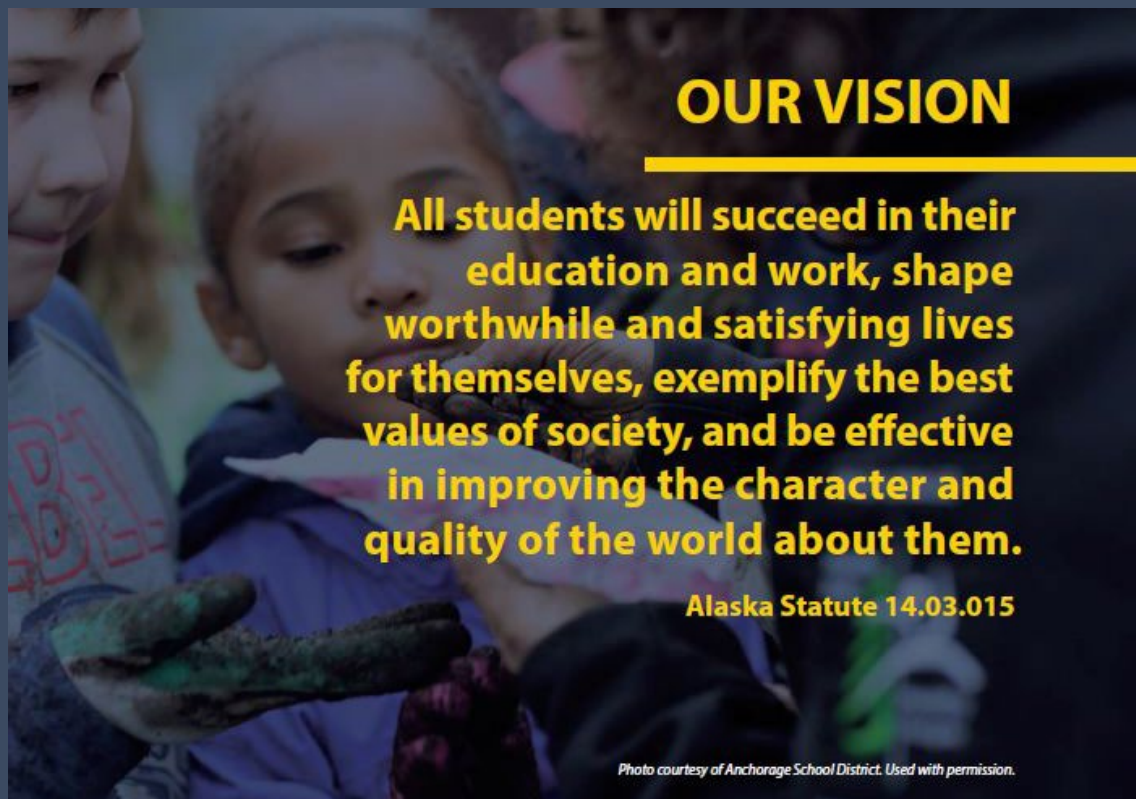
**An excellent education
for every student
every day.**

OUR VISION

**All students will succeed in their
education and work, shape
worthwhile and satisfying lives
for themselves, exemplify the best
values of society, and be effective
in improving the character and
quality of the world about them.**

Alaska Statute 14.03.015

Photo courtesy of Anchorage School District. Used with permission.



Purpose -

DEED exists to provide **information, resources, and leadership** to support an excellent education for every student every day.

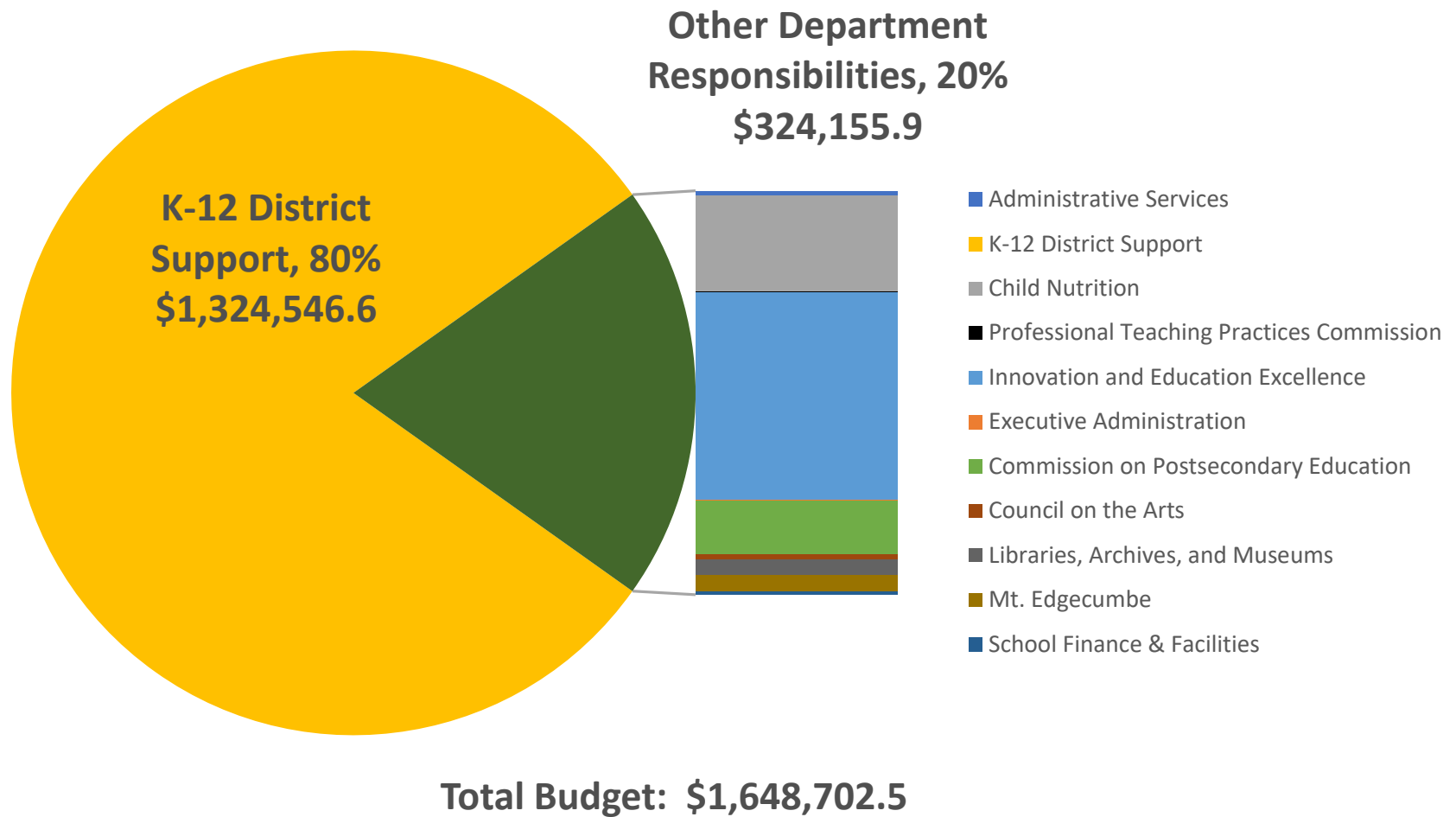


Alaska's Education Challenge

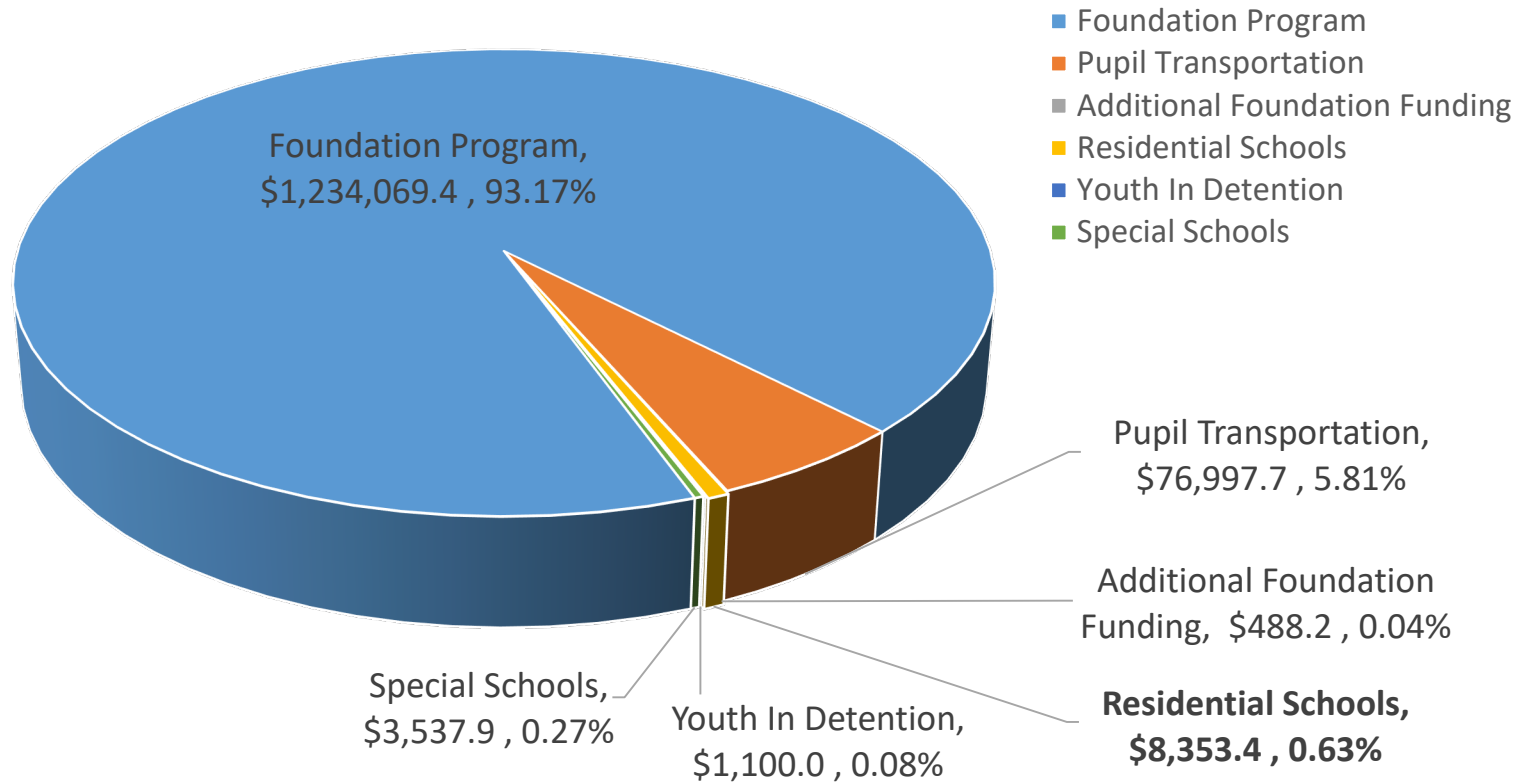


• An Excellent Education for Every Student Every Day •

FY2021 Governor's Budget (All Funds)

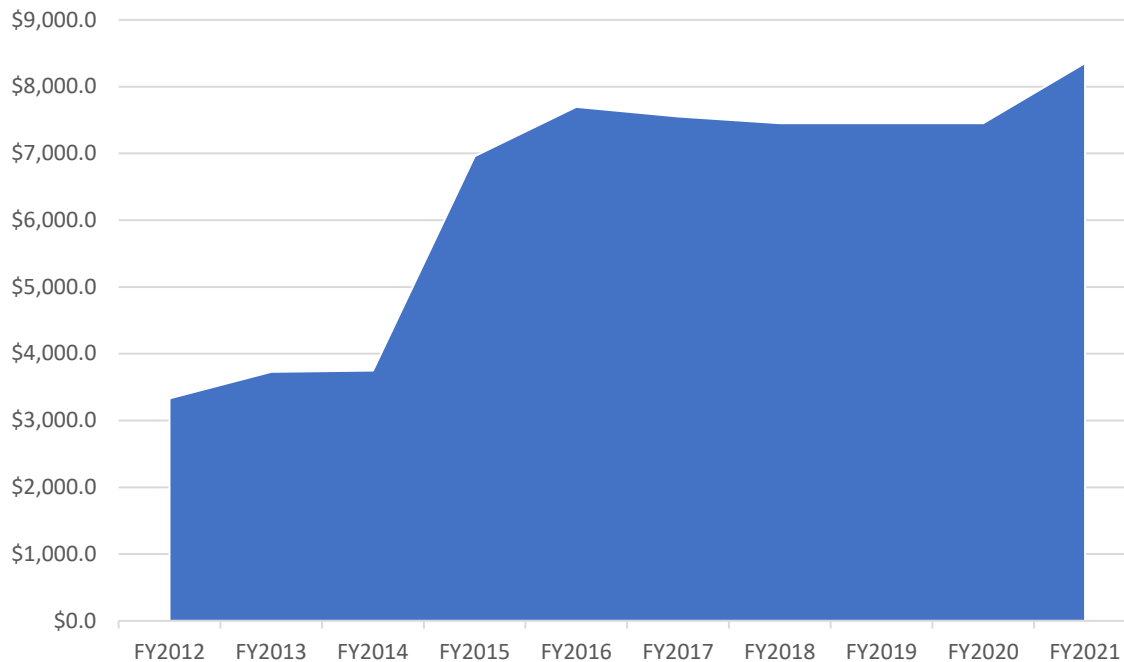


FY2021 Governor's Budget – K-12 District Support (All Funds)



Residential Schools Program Component

Funding and Position History

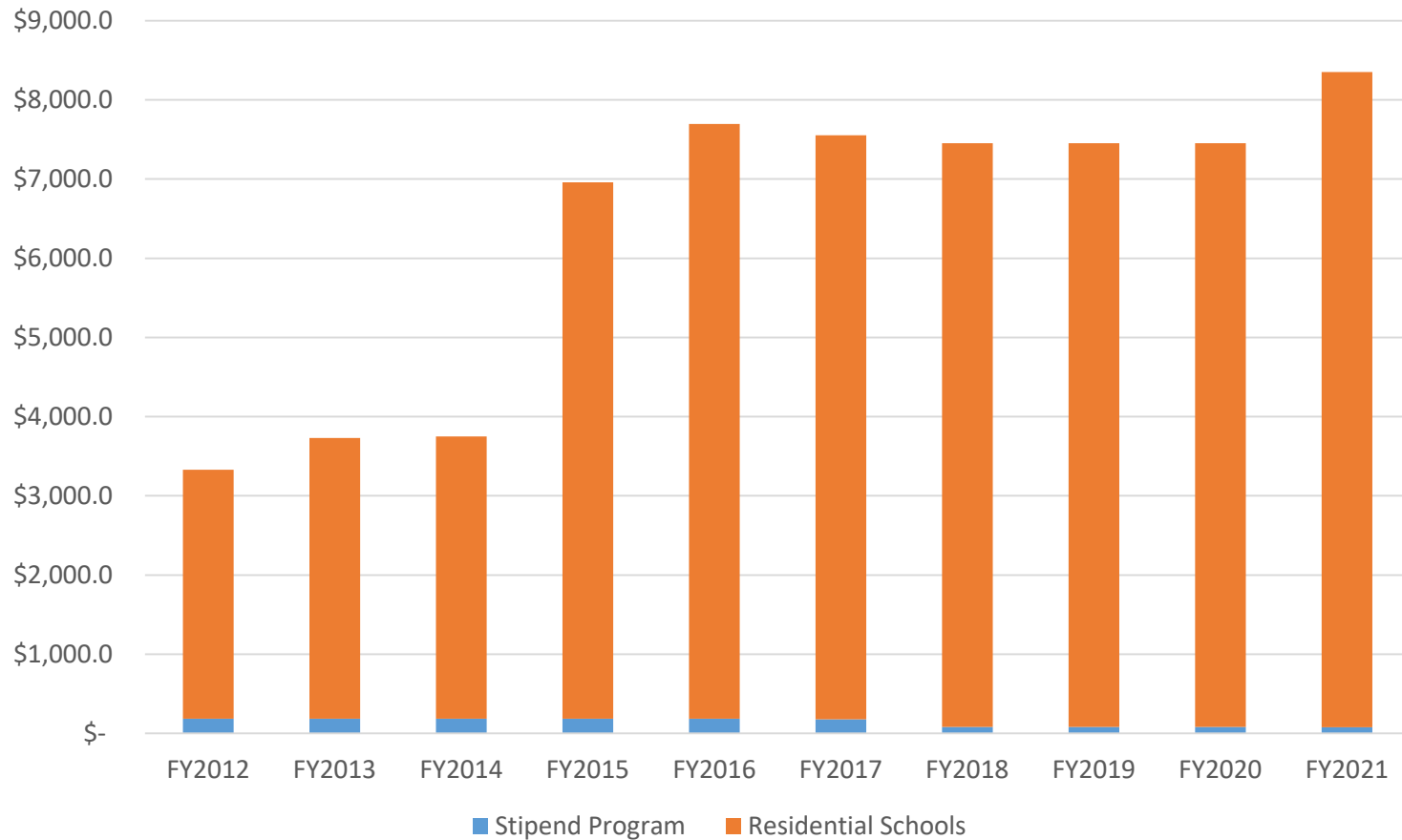


FY2021 Governor



Program support is provided by staff in the School Finance and Facilities component.

Residential Schools Program Component



■ Stipend Program ■ Residential Schools



Residential Schools Program Component

- FY2021 Governor's Budget Changes From FY2020
 - Component name change
 - from Boarding Home Grants Component to Residential Schools Program; this better reflects the activities performed in this component
 - \$900.2 UGF increment – addition of two new residential schools
 - \$330.2, 20-bed program in the North Slope Borough School District approved by DEED in December 2016
 - \$570.0, 50-bed program in the Lower Yukon School District approved by DEED in September 2019



Residential Schools Program Component

- Two programs under this component:
 - Secondary Boarding Home Stipend Program
 - AS 14.07.030(2); 4 AAC 09.050
 - School Districts Operating Residential Schools
 - AS 14.16.100; 4 AAC 33.090



Secondary Boarding Home Stipend Program

- The stipend program was established in 1966 to provide a secondary school education within Alaska for high school students from areas without access to appropriate grade levels.
- The placement process for the stipend program is outlined in regulation, 4 AAC 09.050(a)(3), and made by the district of residence.
- This relatively small program serves the State of Alaska by providing an option for students to participate in high school in a neighboring community when an appropriate grade level is not available in their home town.

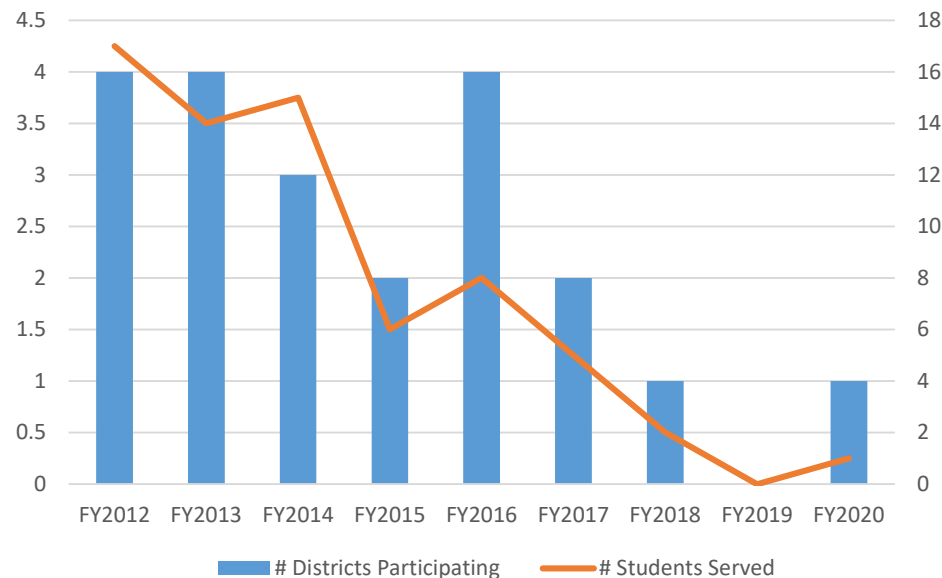


Secondary Boarding Home Stipend Program

- A typical example of this program may be a student from a small community with only one or two high school students and thus the stipend program is used to place the students with a family in another community within the district for high school.
- Placement of students outside their district of residence requires a Memorandum of Agreement.
 - Signed by DEED and the Superintendent from both districts

Secondary Boarding Home Stipend Program

- During the 1960s and 1970s, student enrollment in this program was significantly higher than today.
- Currently (FY2020) the stipend program serves one student in one school district.



Secondary Boarding Home Stipend Program

- Funding for this program includes a monthly stipend (varies based on region) that is paid for the number of days, up to 180 days, that the student is receiving services.
- FY2020 rates:

Region	Monthly Rate	Daily Rate
1 – Southeast	\$1,623	\$54.10
2 – Southcentral	\$1,569	\$52.30
3 – Interior	\$1,905	\$63.50
4 – Southwest	\$1,983	\$66.10
5 – Northern (Remote)	\$2,334	\$77.80

Secondary Boarding Home Stipend Program

- The stipend program also provides for one round trip transportation and an indirect charge up to the district's federal indirect rate.
- DEED administers payments on a quarterly basis, based on a district's request for reimbursement.
- The current appropriation is \$79.2 UGF.
- Funds are distributed to participating districts, and unspent funds lapse back to the general fund.



Secondary Boarding Home Stipend Program

- The Application instructions and rates, Budget Report, and Program Report are available on the department's website under forms:

<https://education.alaska.gov/forms>

Form Number	Form Name	Due Date
05-20-024	Boarding Home Program Instructions & Rates	N/A
05-96-021	Boarding Home Budget Report	October 15
05-96-023	Boarding Home Program Report	N/A



School Districts Operating Residential Schools

- In 2006 the legislature passed HB 16, which provided funding for statewide residential programs at AS 14.16.200.
- The initial law included districts that, prior to January 1, 2005, were operating a statewide residential program for grades 9 through 12.
 - This included three programs: Galena, Lower Kuskokwim, and Nenana.

School Districts Operating Residential Schools

- DEED accepted applications from the three qualifying districts and approved a maximum student count for funding for each program.
- The maximum count is based on capacity aligned to the program and dormitory facilities, and the annual appropriation is set to fund this maximum count.
- The programs are funded for residential costs for eligible students that live outside the community where the residential school is located.



School Districts Operating Residential Schools

- After operating under AS 14.16.200 for approximately five years, and providing funding to the initial three districts that were in operation when the law was passed, the 2011 legislature, in special session, passed SB 84 which amended the program in two ways:
 - A provision was added allowing DEED to accept applications and approve, if applicable, up to three additional programs.
 - The stipend rate was increased by doubling the rates in statute, for a two year period. The increase was maintained after the two years and an additional increase was later passed into law resulting in the current stipend rates.



School Districts Operating Residential Schools

- Subsequently both regulations and statute (SB 47 enacted in 2013) were amended to include variable-term programs.
- Variable-term programs are approved to fund the same number of students throughout the entire school year, however the actual students housed change to provide sessions of residential instruction to different groups of students.
- In addition, the variable-term program may not claim students for foundation funding as the student is claimed in their full-time district of residence.

School Districts Operating Residential Schools

- The most recent program change was enacted through HB 278, effective July 1, 2015, which set into law an annual period of application; this does not require that new programs be approved.
- In addition, HB 278 provided a 1.5 times increase in rate and set those rates in statute.
- Application program approvals are made contingent on a legislative appropriation be added for the approved program.

School Districts Operating Residential Schools

- Funding for this program includes the residential stipend and transportation:
 - The monthly rate x 9 months x actual eligible and approved student count = a district's reimbursement for the residential stipend.
 - One round-trip ticket per student, at the least expensive means, between the student's community of residence and the school if the district expends money for the trip.
- A variable-term program provides transportation support through one round-trip ticket cost per approved bed, to be used to offset actual costs.



School Districts Operating Residential Schools

- Stipend rates are set in statute by region.
- Stipend rate history:

Region	FY2007 – FY2011	FY2012 – FY2014	FY2015 – Current
1 – Southeast	\$410	\$820	\$1,230
2 – Southcentral	\$400	\$800	\$1,200
3 – Interior	\$484	\$968	\$1,452
4 – Southwest	\$503	\$1,006	\$1,509
5 – Northern (Remote)	\$592	\$1,184	\$1,776



School Districts Operating Residential Schools

District	School Name	maximum # of students approved	1st year of funding	Statewide/ Districtwide	Year-long/ Variable-term	Region
Anchorage	Dena'ina Academy	4	FY2015	Districtwide	Year-long	Region 2
Bering Strait	NACTEC	26	FY2015	Statewide	Variable-term	Region 5
Chugach	Voyage to Excellence	24	FY2015	Statewide	Variable-term	Region 2
Galena	Galena Interior Learning Academy	210	FY2007	Statewide	Year-long	Region 5
Lower Kuskokwim	Kuskokwim Learning Academy	35	FY2007	Statewide	Year-long	Region 4
Lower Kuskokwim	Ready Academy	40	FY2016	Districtwide	Variable-term	Region 4
Lower Yukon	LYSD CTE Residential Program	50	***	Districtwide	Variable-term	Region 2
Nenana	Nenana Living Center	100	FY2007	Statewide	Year-long	Region 3
North Slope	Residential Learning Center	20	***	Districtwide	Variable-term	Region 5
Northwest Arctic	Star of the Northwest	40	FY2016	Statewide	Year-long / Variable-term	Region 5

***Lower Yukon - DEED approved for FY2021 operation; funding is pending legislative appropriation

*** North Slope - DEED approved for FY2018 operation; funding is pending legislative appropriation

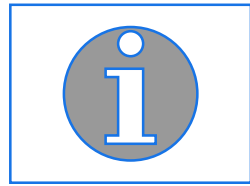


School Districts Operating Residential Schools

- s:
- The Application, Year-End Report and Request for Reimbursement form, and Year-End report form are available on the department's website under forms: <https://education.alaska.gov/forms>

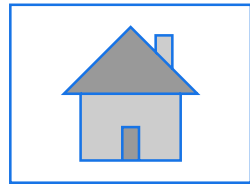
Form Number	Form Name	Due Date
05-07-061	Residential School Application	N/A
05-07-062	Residential School--Year end Report and Request for Reimbursement	December 1
05-07-089	Residential School Year-End Report	N/A





Contact Information

- Heidi Teshner, Director of Finance and Support Services
- Heidi.Teshner@ alaska.gov
- (907) 465-2875



InDEED: Connect With Us

- education.alaska.gov
- Teacher Certification: (907) 465-2831
- Main Line: (907) 465-2800
- @AlaskaDEED on Twitter, Facebook, Instagram, Flickr, and Vimeo