

Reentry Services: Promoting Safer & Healthier Communities

HOUSE STATE AFFAIRS COMMITTEE PRESENTATION

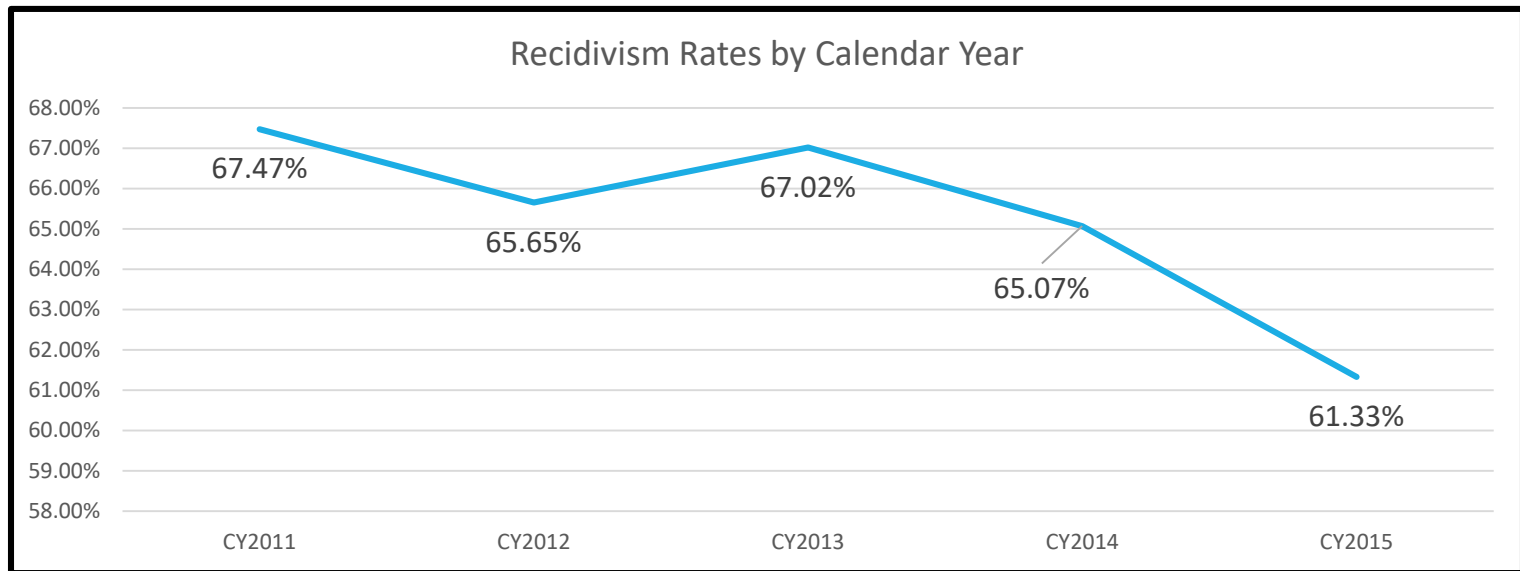
MARCH 14, 2019

Recidivism

A felony offender who is re-incarcerated within three years of release for any offense conviction:

- Parole or probation violation
- New felony crime
- New misdemeanor crime

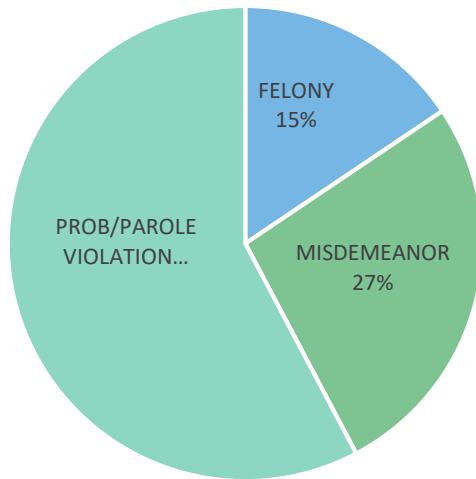
Alaska Recidivism Rates



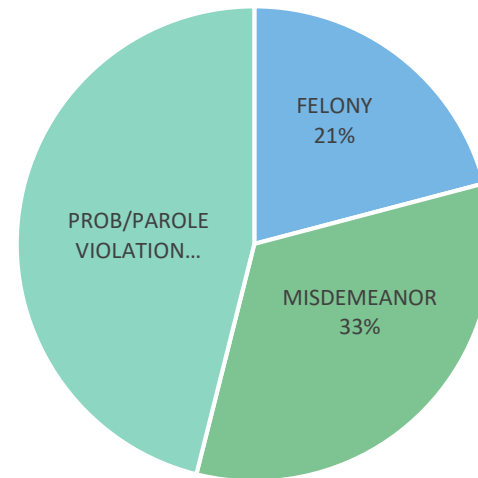
- After consistently being in the mid to upper 60th percentile, Alaska has begun to see a steady decline in recidivism.

Recidivism – by Offense Type

Return to Incarceration – 6 months

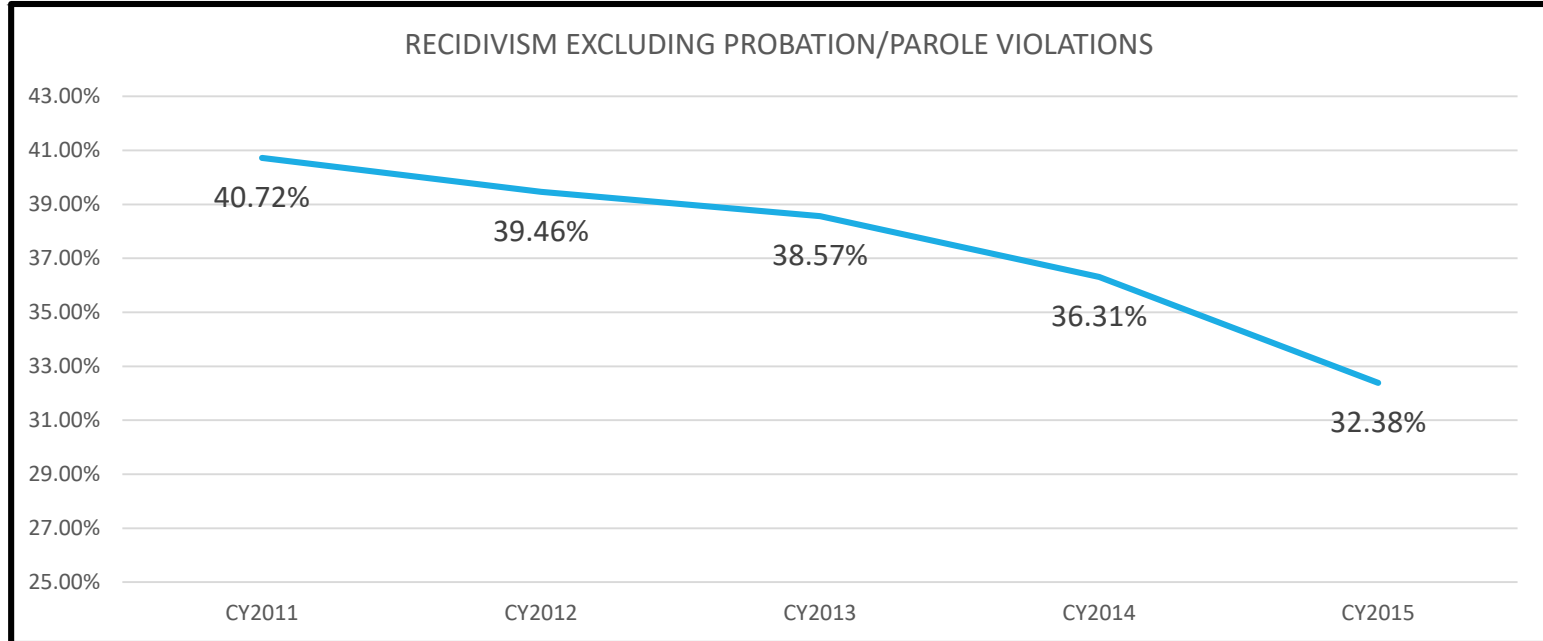


Return to Incarceration – 3 years



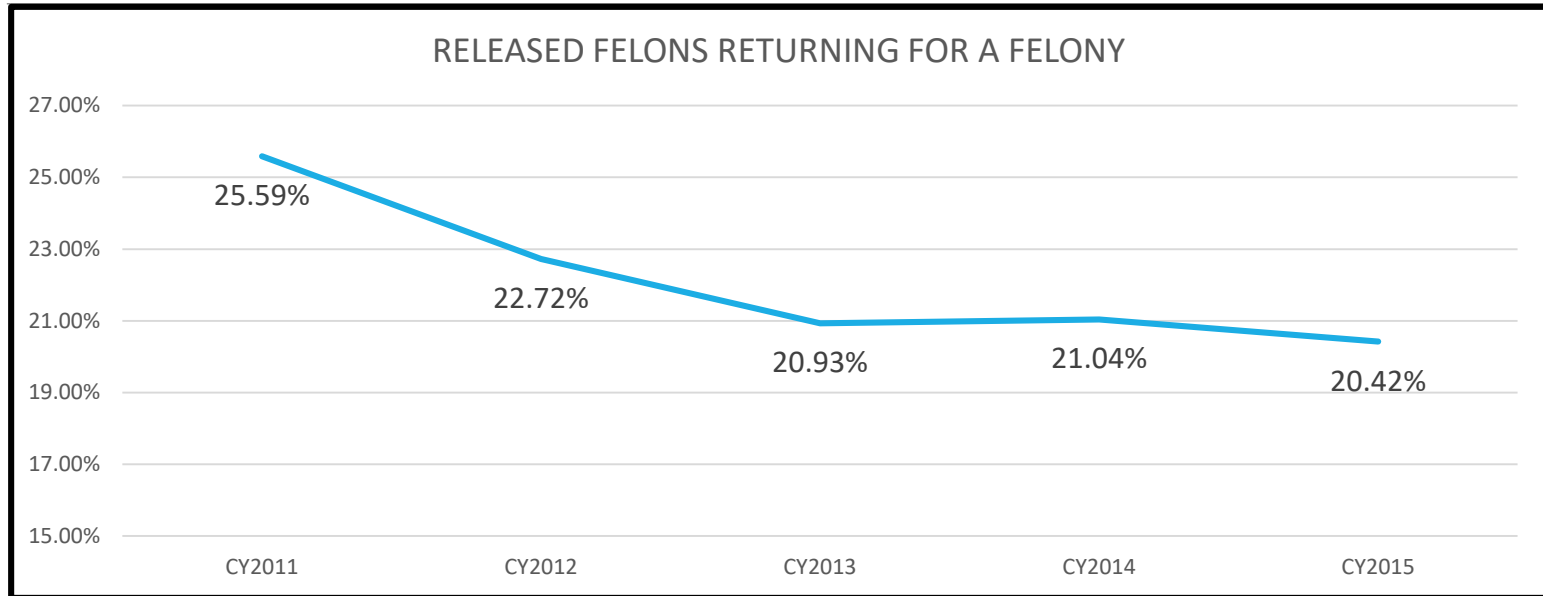
- 58% of those who return to custody within six months, return because of technical violations.
- 46% of those who return to custody within three years, return because of technical probation violations.

Recidivism – new crimes



- The recidivism rate for new crimes is 32%.

Felony Recidivism



- 20% of offenders released from DOC facilities return on new felony charges within three years of release.

Recidivism by Offense Class

OFFENSE CLASS	2013	2014	2015
ALCOHOL	57.7%	57.2%	49.3%
DRIVING/TRANSPORT	58.1%	68.9%	47.6%
DRUGS	62.9%	56.6%	55.0%
PAROLE/PROBATION	69.8%	67.5%	63.6%
PERSON	63.8%	62.3%	66.7%
PROPERTY	71.9%	70.7%	67.6%
PUBLIC ORDER/ADMIN	68.1%	72.6%	61.7%
SEX OFFENSE (REG)	54.2%	48.6%	38.6%
WEAPONS	56.7%	54.1%	60.0%
TOTAL	67.0%	65.1%	61.3%

- Recidivism is down in all offense classes except for offenses against a person and weapons offenses.
- The drop in sex offenders recidivating has been substantial.

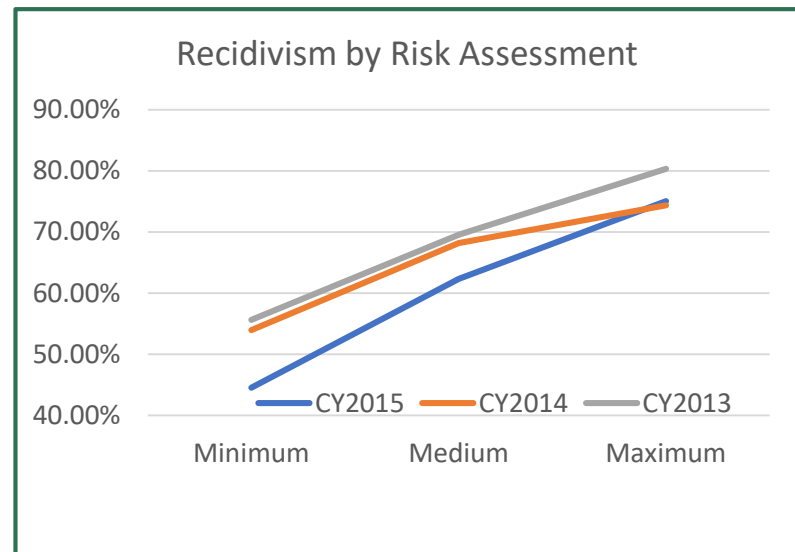
Recidivism

Release Offense Class & New Offense Class

RELEASED OFFENSE	RETURNED OFFENSE								
	ALCOHOL	DRIVING/ TRANSPORTATION	DRUGS	PAROLE/ PROBATION	PERSON	PROPERTY	PUBLIC ORDER/ADMIN	SEX OFFENSE (REG)	WEAPONS
ALCOHOL	9.31%	0.00%	1.40%	3.34%	1.22%	0.22%	1.21%	0.00%	0.00%
DRIVING/ TRANSPORTATION	2.45%	0.00%	1.40%	0.94%	0.49%	0.44%	0.00%	0.00%	8.57%
DRUGS	0.49%	2.33%	9.58%	2.82%	1.71%	2.89%	1.81%	0.00%	5.71%
PAROLE/PROBATION	24.23%	31.32%	23.93%	29.48%	39.14%	27.16%	29.17%	27.24%	28.57%
PERSON	3.43%	6.98%	1.64%	11.16%	9.27%	5.33%	6.63%	2.48%	8.57%
PROPERTY	0.49%	2.33%	3.74%	5.32%	2.68%	13.56%	6.02%	0.00%	5.71%
PUBLIC ORDER/ADMINISTRATION	8.40%	4.65%	12.62%	9.23%	11.22%	16.22%	15.66%	4.96%	2.86%
SEX OFFENSE (REG)	0.49%	0.00%	0.00%	0.57%	0.49%	0.22%	0.00%	3.92%	0.00%
WEAPONS	0.00%	0.00%	0.70%	0.73%	0.49%	1.56%	1.21%	0.00%	0.00%
TOTAL	49.30%	47.60%	55.00%	63.60%	66.70%	67.60%	61.70%	38.60%	60.00%

Recidivism by Risk Level

RISK SCORE	CY2013	CY2014	CY2015
Minimum	55.62%	53.98%	44.57%
Medium	69.56%	68.22%	62.36%
Maximum	80.37%	74.36%	75.06%



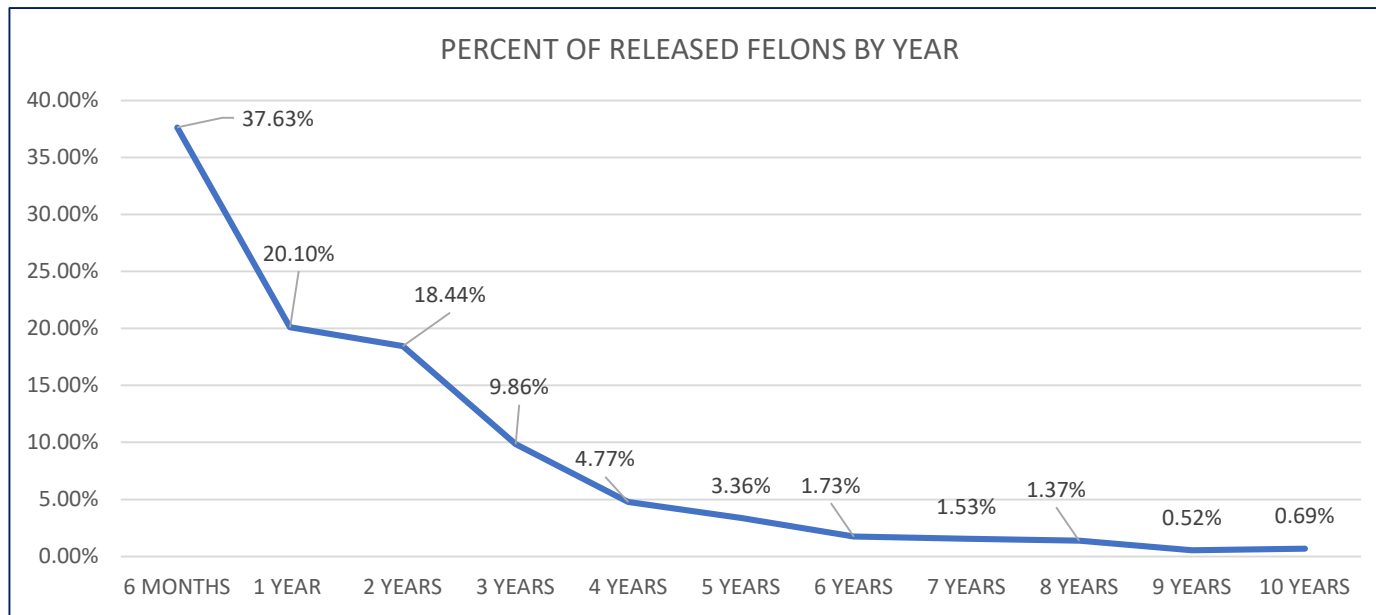
- Recidivism increases as the risk increases.

When are people most likely to return?

	6 MONTHS	1 YEAR	2 YEARS	3 YEARS
CY2011	26.09%	43.90%	59.95%	67.47%
CY2012	23.65%	41.40%	57.93%	65.65%
CY2013	24.97%	43.74%	60.31%	67.02%
CY2014	25.20%	43.19%	59.38%	65.07%
CY2015	25.63%	41.45%	56.16%	61.33%

- In any given year, approximately 25% of releases will return to incarceration within six months.
- More than 40% will return within one year.

Long-term Results



- The highest risk for recidivism is within six months of release.
- After three years, the number of returns to incarceration drops considerably.
- Less than 6% will return between six and ten years post-release.

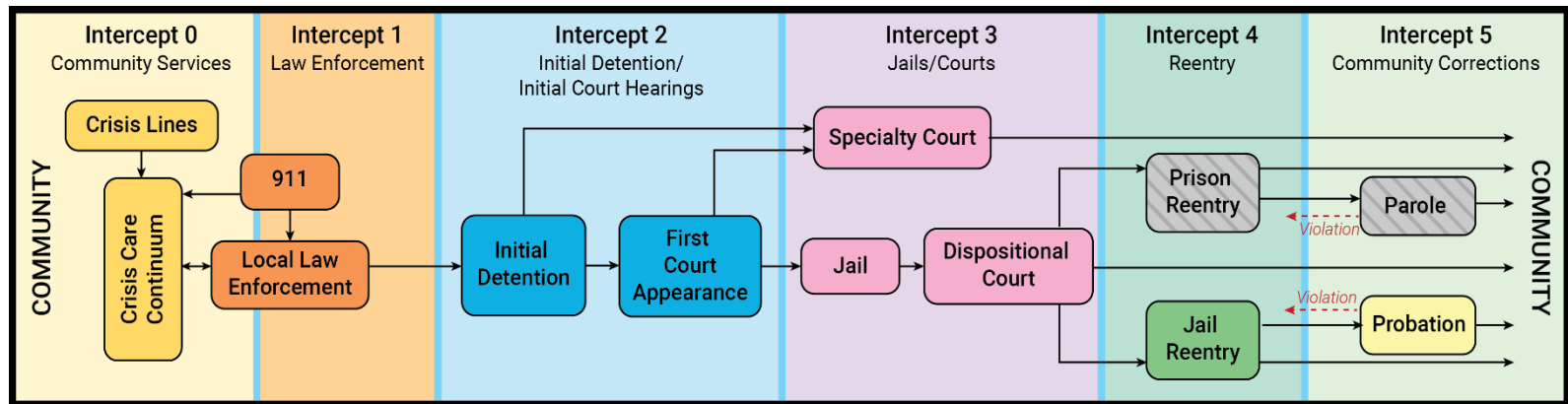
Reentry Background

- 95% of all prisoners will eventually return to 'the streets,' if not their home community, then another Alaskan community
- Reentering persons often have substance abuse and mental health diagnoses which interfere with functionality
- Reentering persons are often without housing and employment
- Family ties may have been diminished by non-contact or by their relocation
- But when support services are frontloaded for medium to high risk individuals they are more likely to stay out rather than return to prison

What do we mean by “reentry”?

- Person leaves correctional facility where they have been incarcerated
- After completing a sentence of imprisonment
- He or she may be under supervision (probation, parole) but not always, and especially not if the sentence was for misdemeanor crime(s)
- Their return is to a community, but not necessarily their home community

Sequential Intercept Model (SIM)



© 2016 Policy Research Associates, Inc.

“Successful reentry begins on admission and continues through incarceration, release, community supervision and ultimately the unsupervised and successful reintegration [of the individual] into the community.”

Reentry & Public Safety

Recidivism reduction is an important part of the state's public safety mission.

Reentry planning helps offenders successfully resume family and community responsibilities.

The Department of Corrections has programs in place to address the criminogenic risk factors associated with recidivism.

A Plan to Address Needs

Assessing criminogenic needs

- Anti-social values/beliefs/cognition
- Anti-social companions
- Anti-social personality or temperament
- Family and/or marital
- Substance abuse
- Employment
- Education
- Leisure and/or recreation

Offender Management Plan (OMP)

- A roadmap to determine what programs are needed while in custody.
- A means of measuring a prisoner's readiness for reentry.

Reentry & Rehabilitation Programs

Education

- GED
- English as Second Language
- New Path High School
- Post-secondary options

Reentry classes

Vocational rehabilitation & job prep

Faith communities & mentoring

Parenting classes

Alternatives to Violence

Mental health

- Acute, subacute and crisis intervention
- Specialized release programs

Sex offender treatment

- Institutional programs
- Containment model

Anger management

Medical social work

Domestic violence programming

Substance abuse treatment

- Assessment
- Psychoeducation
- Intensive outpatient
- Residential
- Dual diagnosis programs
- CRC programming

Peer support

Tenant Based Rental Assistance

Medication assisted treatment

- Vivitrol
- Methadone bridging

48-Week Offender Program

- History -

Statewide Reentry Efforts

- 1) 2010 DOC formed statewide Prisoner Reentry Task Force but recognized that reentry needs had to be locally developed and met
 - ❑ Grassroots reentry coalitions (Anchorage, Juneau, e.g.) formed led by community members, probation officers and others
- 2) 2015 Recidivism Reduction Plan
- 3) FY16 Mental Health Trust provided funding support for 4 reentry coalitions
- 4) Spring 2017, additional reentry coalitions form (Dillingham, Kenai, Ketchikan, Nome)
- 5) Spring 2017 the Depts. of Corrections, Health & Social Services and the Trust partnered create vision collaboration between the State and the community to support reentrants

Local Reentry Coalitions



Roles of a Reentry Coalition

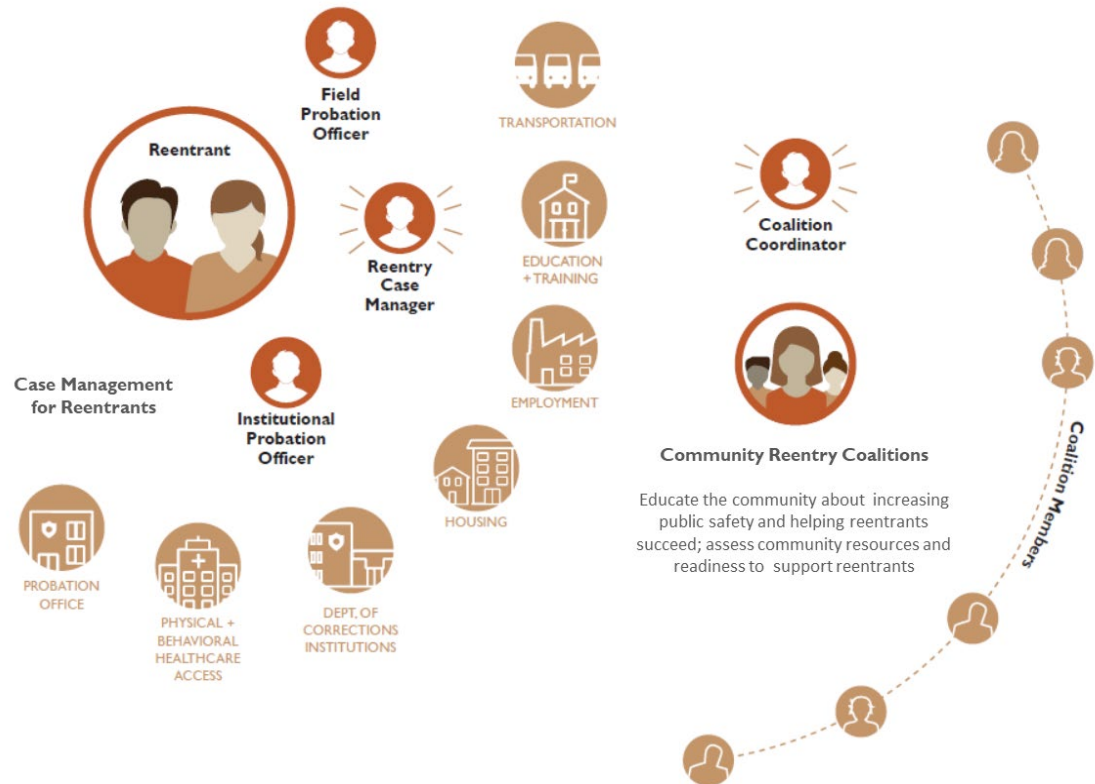
Educate the community about the justice system and the reentry program,

Identify local challenges facing reentrants,

Identify local gaps in reentry services and identify collaborative solutions to build capacity in the community, and

Serve as the local point of contact for the DOC and its partners in reducing recidivism.

From Incarceration to Communities



Juneau Reentry Coalition

- The Juneau Reentry Coalition's (JREC) mission is to, *“promote public safety by identifying and implementing strategies that increase a former prisoner's well-being within the community and reduces the likelihood of their return to prison through recidivating.”*
- Average yearly releases to Juneau – 502 individuals (CY: '12-'16).
- JREC serves as the facility/community interface.
- JREC is a collaboration of individuals, community stakeholders, public and not-for-profit agencies, faith-based and business partners who are united and committed to the goal of a safer community.
- Example: Subway of Juneau donating meal cards to our local field probation office.

Juneau Reentry Coalition

JREC's area's of focus:

- Behavioral health treatment and support.
- Reentry housing:
 - Gastineau Human Services,
 - Haven House Juneau (women),
 - Tlingit & Haida's 16 bed reentry transitional housing program for men.
- Peer Support: those with demonstrated reentry success assisting recently released individuals achieve reentry success.

Juneau Reentry Coalition

- JREC's structure:
 - Community members.
 - Steering Team:
 - Community member Co-chair
 - DOC Institution member Co-chair
 - Fifteen members from community areas of expertise.
 - Workgroups.
 - Community Coordinator.

Juneau Reentry Coalition

- Juneau's reentry process:
 - Releasee - voluntary program
 - Institutions – Case Manager – Field Probation – Community connections.
- Juneau's case management numbers;
 - 63 individuals referred,
 - 15 graduates,
 - 20 opt-outs,
 - 11 Noncompliant,
 - 17 in community or intake process.



Division of Behavioral Health & Community Reentry Supports

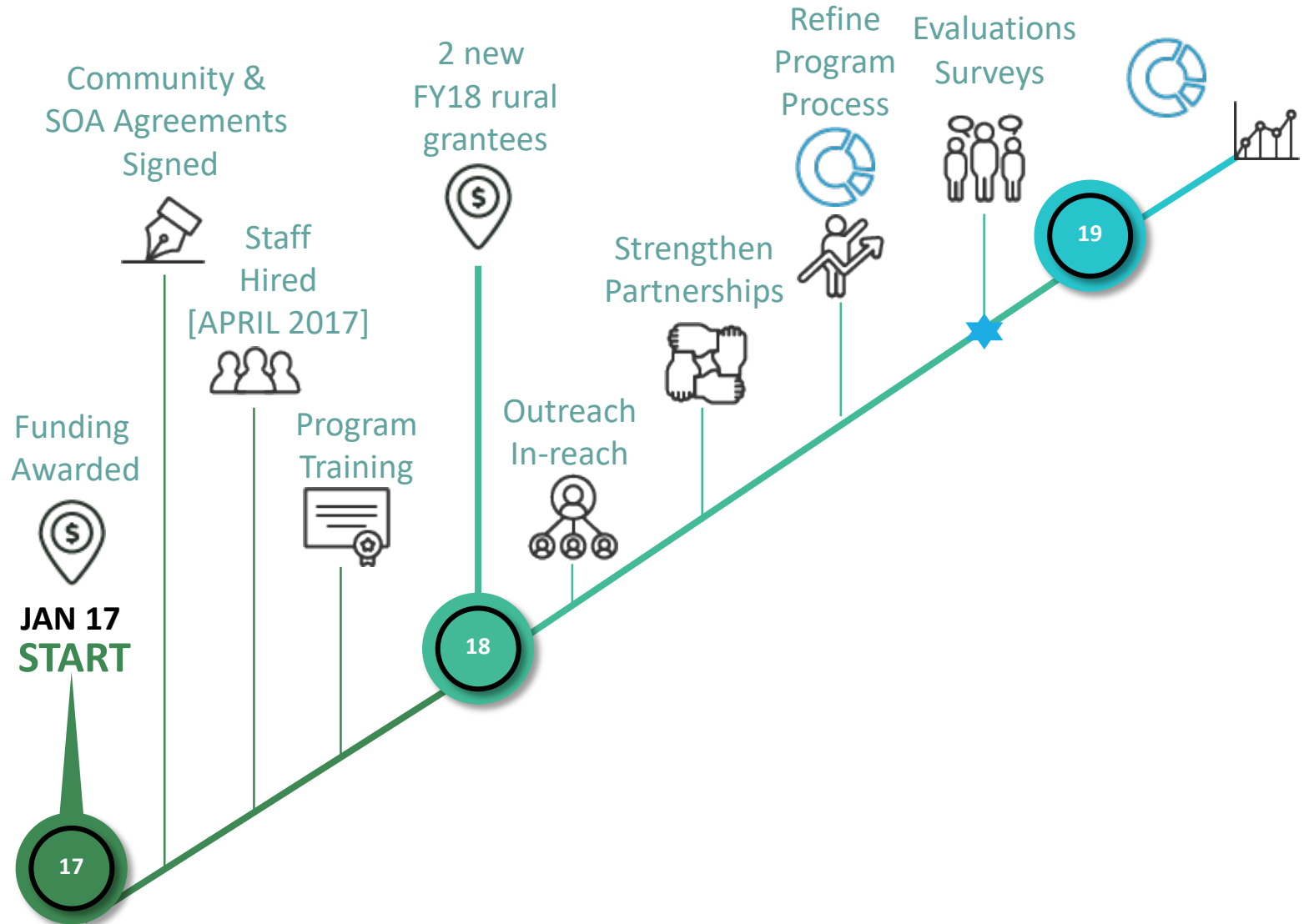
Supports local, community-based staff in planning and coordination of services for medium to high-risk felony offenders, high-risk misdemeanants, and sex offenders

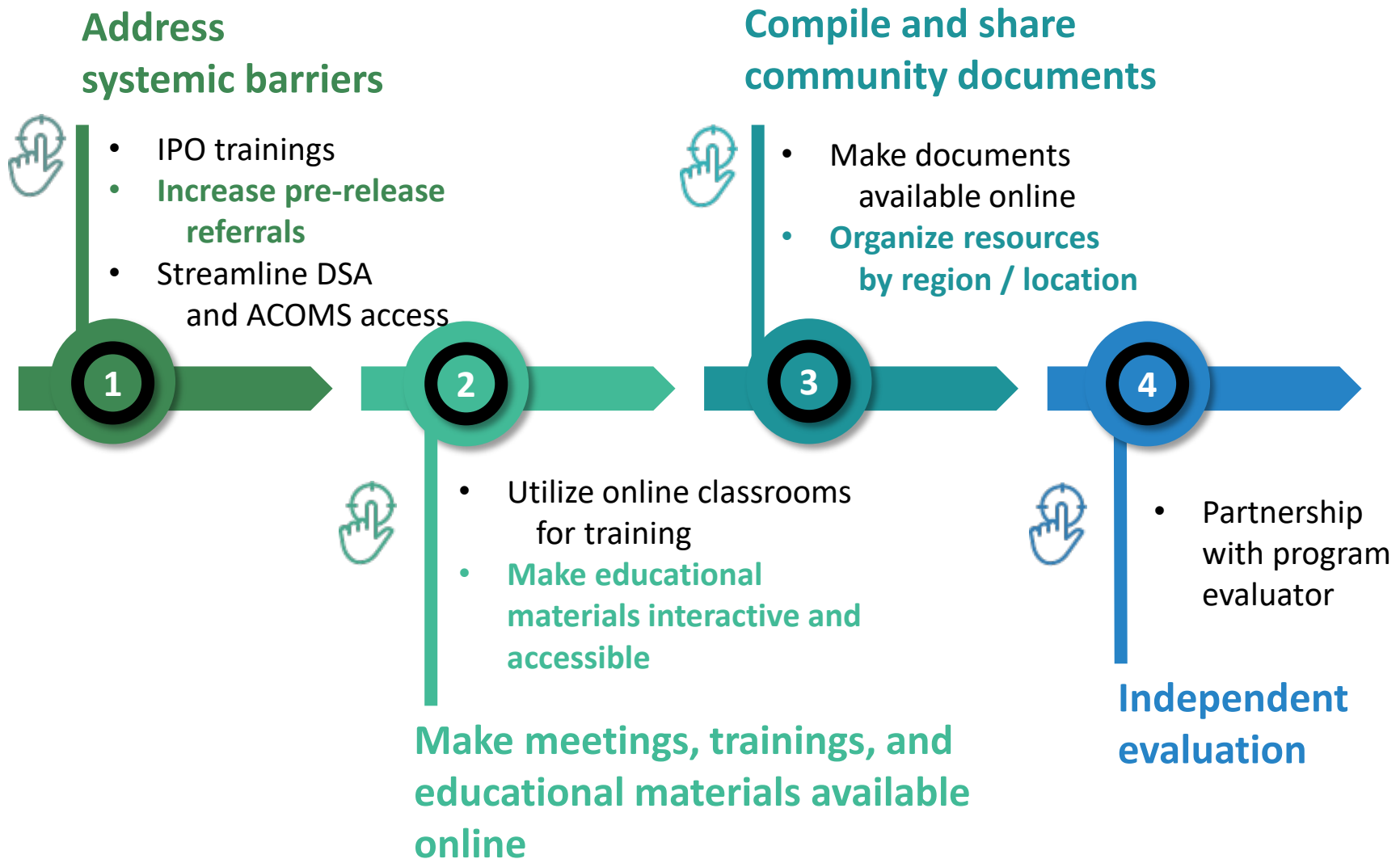
Case Management | Pre-release & Post-release community-based referrals (treatment, housing, employment) | Transitional supports



Fairbanks
Juneau
Bristol Bay
Mat-Su
Anchorage

Division of Behavioral Health & Community Reentry Supports





PARTNERS REENTRY CENTER



419 Barrow Street Anchorage, AK 99501

(ANC Correctional Complex: 10 minute walk)

(Adult Public Assistance: 8 minute walk)

(DOC Probation Office: 7 minute walk)

- **Pre-Release & Walk-in**
- **Prioritize High-Risk and Immediate Needs**
- **Purpose-Driven Case Management**
- **Not a “Hang-out” Center**
- **Voluntary, Merit-Based Program**
- **A Referral & Collaboration based “Community Model”**
- **Using Evidence-Based Practices**

PARTNERS REENTRY CENTER

Housing

- ✓ Emergency
- ✓ Transitional
- ✓ Permanent
- ✓ Done in partnership with over 130 private landlords



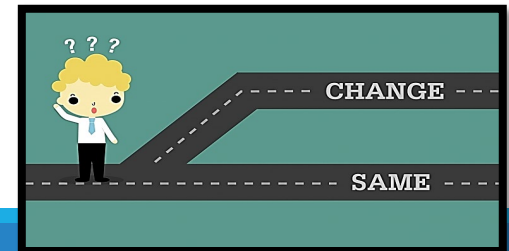
Self-Sufficiency

- ✓ Employment
- ✓ Reinstating Social Security and other APA Benefits
- ✓ Overcoming barriers to employment, including personal shame



Behavioral Modification & Community Support

- ✓ Accountability
- ✓ Sober Support
- ✓ Healthy Personal and Family relationships
- ✓ Goal Setting
- ✓ Finding Sustainable Purpose
- ✓ Referrals and collaboration with Community Partners



PARTNERS REENTRY CENTER

PROGRAM GROUP

Engagement Highlights

65%..... Applied for Medicaid/SNAP

31%..... referred to & utilized

Treatment providers

61%..... Gained Full-Time Employment

An average of \$597.63 was spent per participant on Housing costs for the FY18 Date Range.

91%..... Assessed as Med-Max Risk/Needs

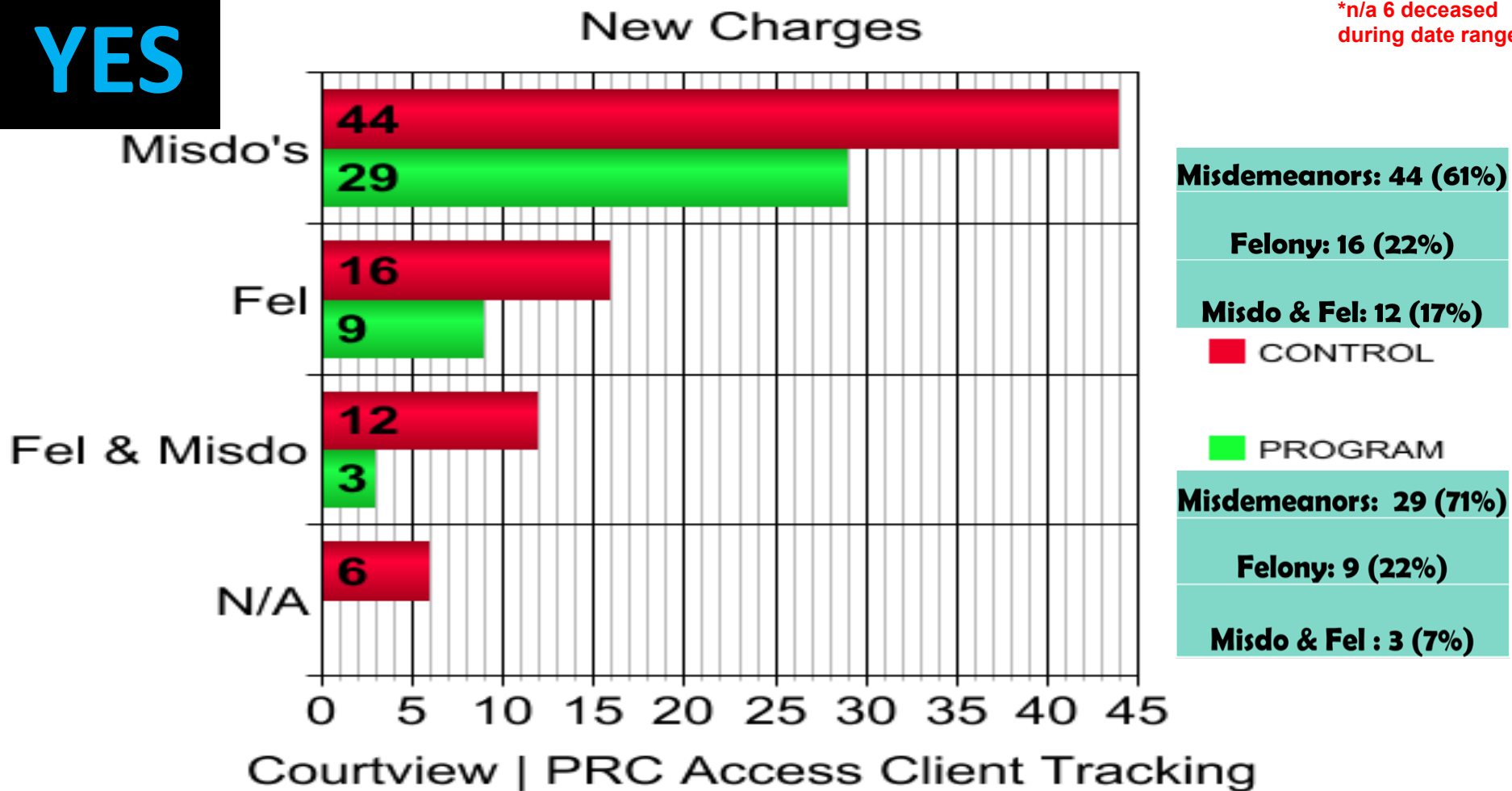


- DOC Referred (FWO)
- Engaged with PRC Program *minimum 7* or more times
- Housing/Employment Job Lab Services
- Utilized Referrals, Support Groups, Partnerships with other Community Organizations, etc.
- Received Case Management, Goal Planning, Program Intake & Attendance/Accountability Guidelines

**Do We Make
a Difference?**

YES

*n/a 6 deceased during date range



PROGRAM GROUP 41 out of 150 Recidivated, Resulting in a Re-Arrest, Re-Conviction and Return to Custody
(**27% Recidivism Rate**)

CONTROL GROUP 72 out of 150 Recidivated, Resulting in a Re-Arrest, Re-Conviction and Return to Custody
(**48% Recidivism Rate**)

New Charges were based off of July 1st 2017-December 31st 2018/ 18 Month Range

Safer, Healthier Alaskan Communities & Alaskans



**Increase public
safety**

**Improve access to
services & public
health outcomes**

Reduce recidivism

“ The country was built on the belief that each human being has limitless potential and worth. Everybody matters. We believe that even those who have struggled with a dark past can find brighter days ahead. One way we act on that belief is by helping former prisoners who’ve paid for their crimes – we help them build new lives as productive members of our society....the work of redemption reflects our values.”

-President George W. Bush
April 9, 2008

Thank You

Laura Brooks, Department of Corrections

Susanne DiPietro, Alaska Judicial Council

Don Habeger, Juneau Reentry Coalition Coordinator

Christina Shadura, Partners Reentry Center

Joshua Sopko, Partners Reentry Center

Steve Williams, Alaska Mental Health Trust

Alysa Wooden, Department of Health & Social Services