



# ALASKA RECIDIVISM & REENTRY

ALASKA CRIMINAL JUSTICE COMMISSION

MARCH 4, 2019

## DOC AT A GLANCE

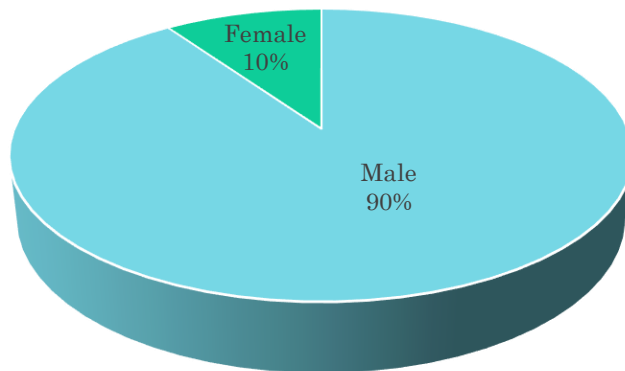
- Alaska is one of six states in the nation that operates a unified correctional system.
- 12 jails and prisons statewide.
- 13 field probation offices.
- 15 regional and community jail contracts.
- 7 contract community residential centers.
- Electronic monitoring programs in 7 communities

# DOC AT A GLANCE

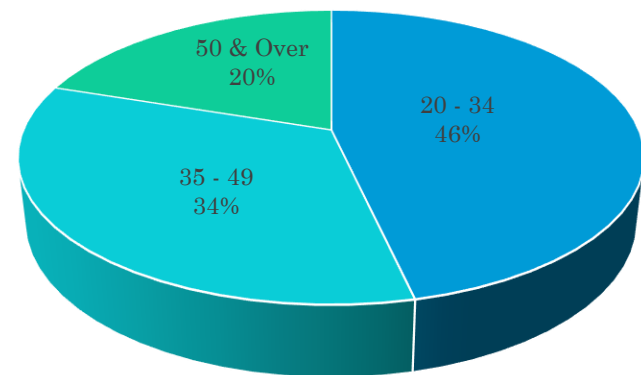
- DOC booked 31,533 offenders into its facilities in 2018
- As of December 31, 2018
  - 4437 offenders in jail or prison
    - 45% of DOC's population is unsentenced
  - 3,547 offenders on probation or parole
  - 967 offenders on pretrial supervision
  - 230 offenders in CRCs
  - 167 offenders on electronic monitoring

# DEMOGRAPHICS (JULY 1, 2018)

Population by Gender



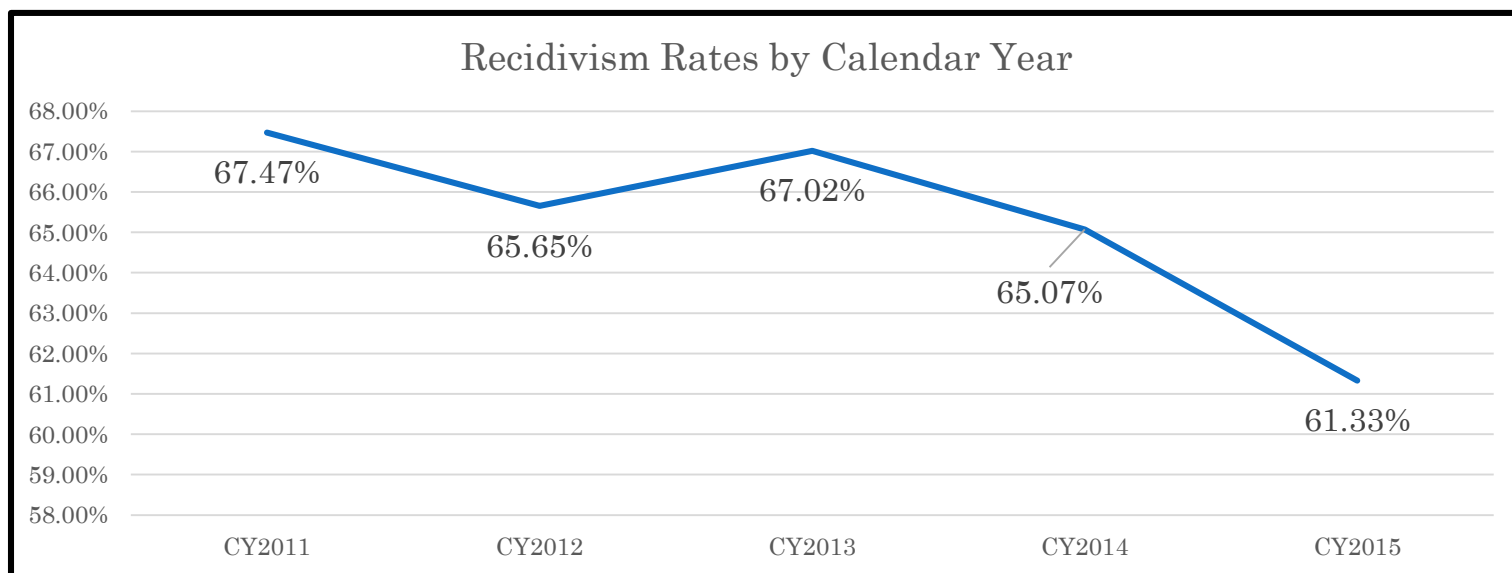
Population by Age



# RECIDIVISM

- A felony offender who is re-incarcerated within three years of release for any offense conviction:
  - Parole or probation violation
  - New felony crime
  - New misdemeanor crime

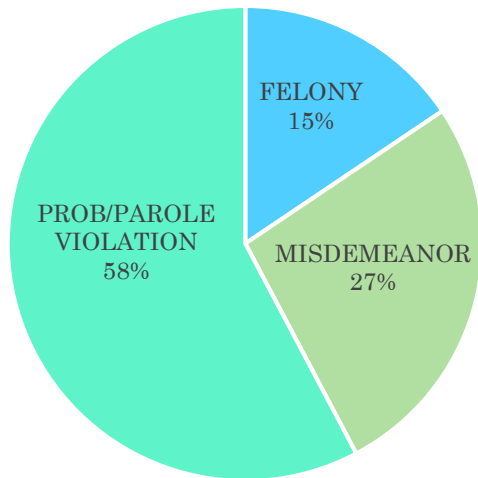
# ALASKA RECIDIVISM RATES



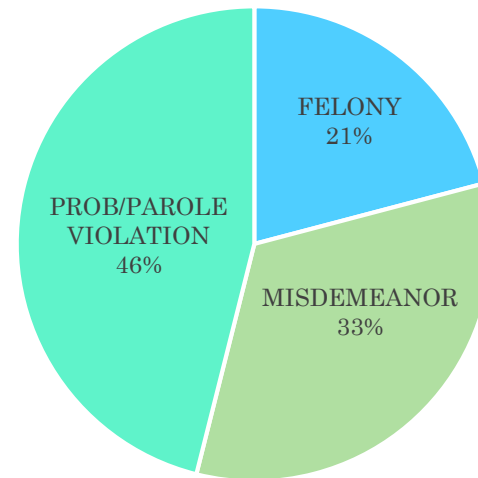
- After consistently being in the mid to upper 60th percentile, Alaska has begun to see a steady decline in recidivism.

# RECIDIVISM – BY OFFENSE

Return to Incarceration – 6 months

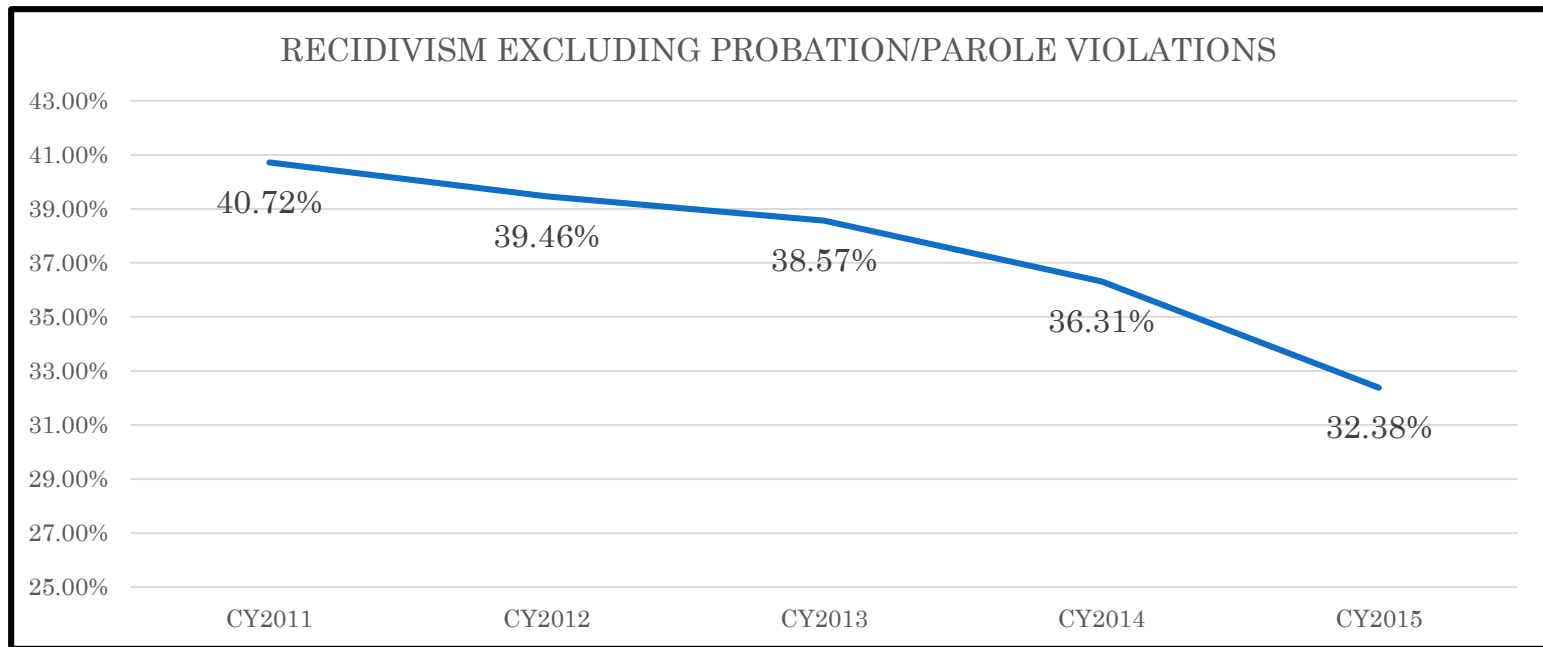


Return to Incarceration – 3 years



- 58% of those who return to custody within six months, return because of technical violations.
- 46% of those who return to custody within three years, return because of technical probation violations.

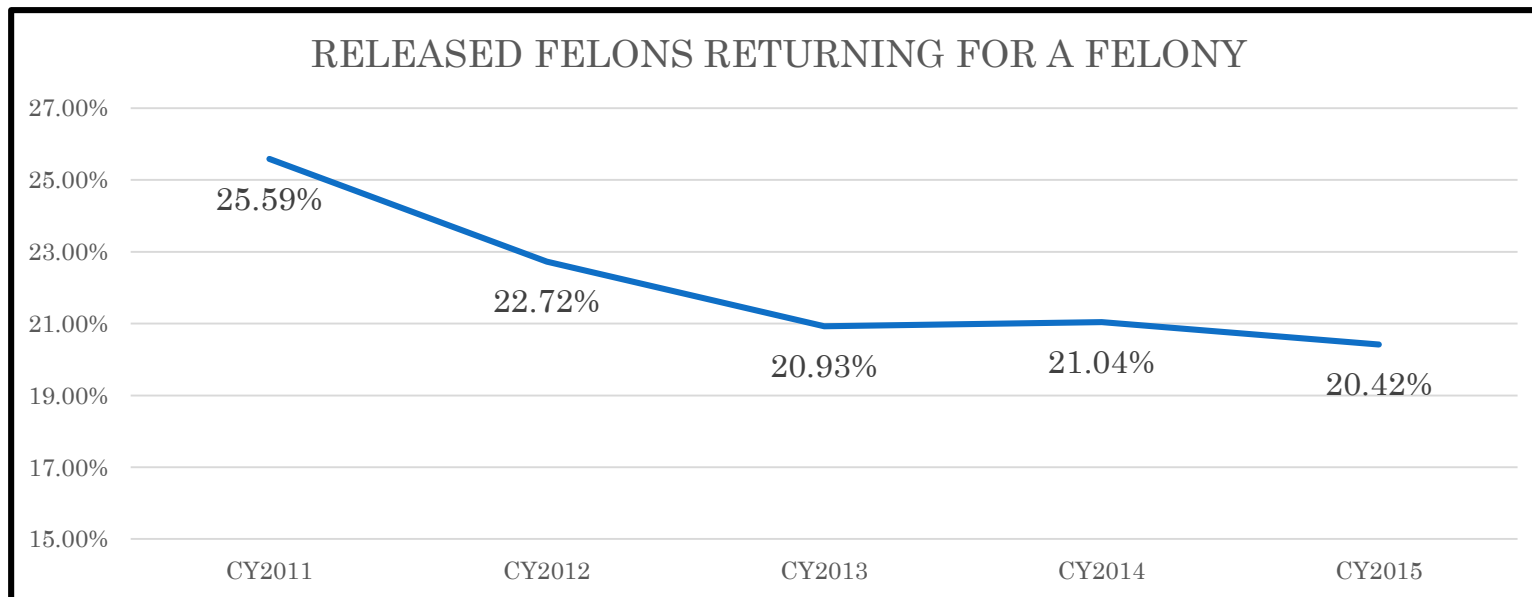
# RECIDIVISM – NEW CRIMES



- The recidivism rate for new crimes is 32%.



# FELONY RECIDIVISM



- 20% of offenders released from DOC facilities return on new felony charges within three years of release.

# RECIDIVISM BY OFFENSE CLASS

OFFENSE CLASS	2013	2014	2015
ALCOHOL	57.7%	57.2%	49.3%
DRIVING/TRANSPORT	58.1%	68.9%	47.6%
DRUGS	62.9%	56.6%	55.0%
PAROLE/PROBATION	69.8%	67.5%	63.6%
PERSON	63.8%	62.3%	66.7%
PROPERTY	71.9%	70.7%	67.6%
PUBLIC ORDER/ADMIN	68.1%	72.6%	61.7%
SEX OFFENSE (REG)	54.2%	48.6%	38.6%
WEAPONS	56.7%	54.1%	60.0%
TOTAL	67.0%	65.1%	61.3%

- Recidivism is down in all offense classes except for offenses against a person and weapons offenses.
- The drop in sex offenders recidivating has been substantial.

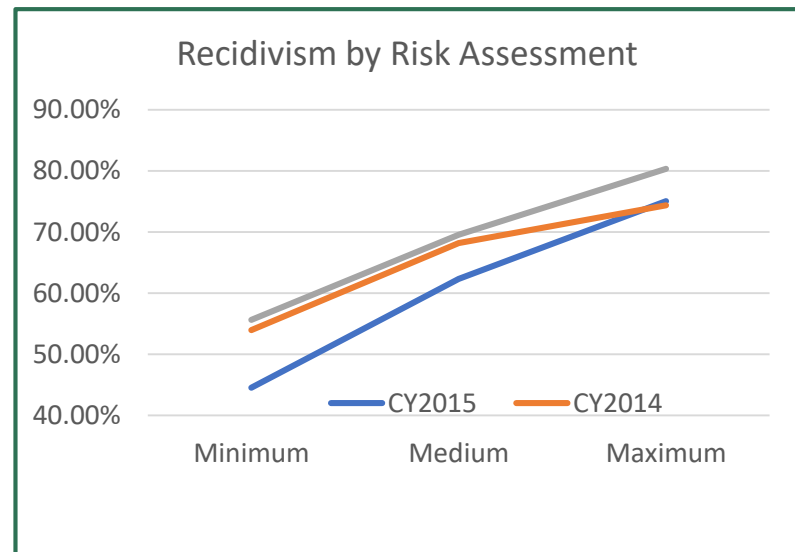
# OFFENSE CLASS BY OFFENSE CLASS

## RECIDIVISM

RETURNED OFFENSE	RELEASED OFFENSE								
	ALCOHOL	DRIVING/ TRANSPORTATION	DRUGS	PAROLE/ PROBATION	PERSON	PROPERTY	PUBLIC ORDER/ ADMINISTRATION	SEX OFFENSE (REG)	WEAPONS
ALCOHOL	9.31%	0.00%	1.40%	3.34%	1.22%	0.22%	1.21%	0.00%	0.00%
DRIVING/ TRANSPORTATION	2.45%	0.00%	1.40%	0.94%	0.49%	0.44%	0.00%	0.00%	8.57%
DRUGS	0.49%	2.33%	9.58%	2.82%	1.71%	2.89%	1.81%	0.00%	5.71%
PAROLE/PROBATION	24.23%	31.32%	23.93%	29.48%	39.14%	27.16%	29.17%	27.24%	28.57%
PERSON	3.43%	6.98%	1.64%	11.16%	9.27%	5.33%	6.63%	2.48%	8.57%
PROPERTY	0.49%	2.33%	3.74%	5.32%	2.68%	13.56%	6.02%	0.00%	5.71%
PUBLIC ORDER/ADMINISTRATION	8.40%	4.65%	12.62%	9.23%	11.22%	16.22%	15.66%	4.96%	2.86%
SEX OFFENSE (REG)	0.49%	0.00%	0.00%	0.57%	0.49%	0.22%	0.00%	3.92%	0.00%
WEAPONS	0.00%	0.00%	0.70%	0.73%	0.49%	1.56%	1.21%	0.00%	0.00%
<b>TOTAL</b>	<b>49.30%</b>	<b>47.60%</b>	<b>55.00%</b>	<b>63.60%</b>	<b>66.70%</b>	<b>67.60%</b>	<b>61.70%</b>	<b>38.60%</b>	<b>60.00%</b>

# RECIDIVISM BY RISK LEVEL

RISK SCORE	CY2013	CY2014	CY2015
Minimum	55.62%	53.98%	44.57%
Medium	69.56%	68.22%	62.36%
Maximum	80.37%	74.36%	75.06%



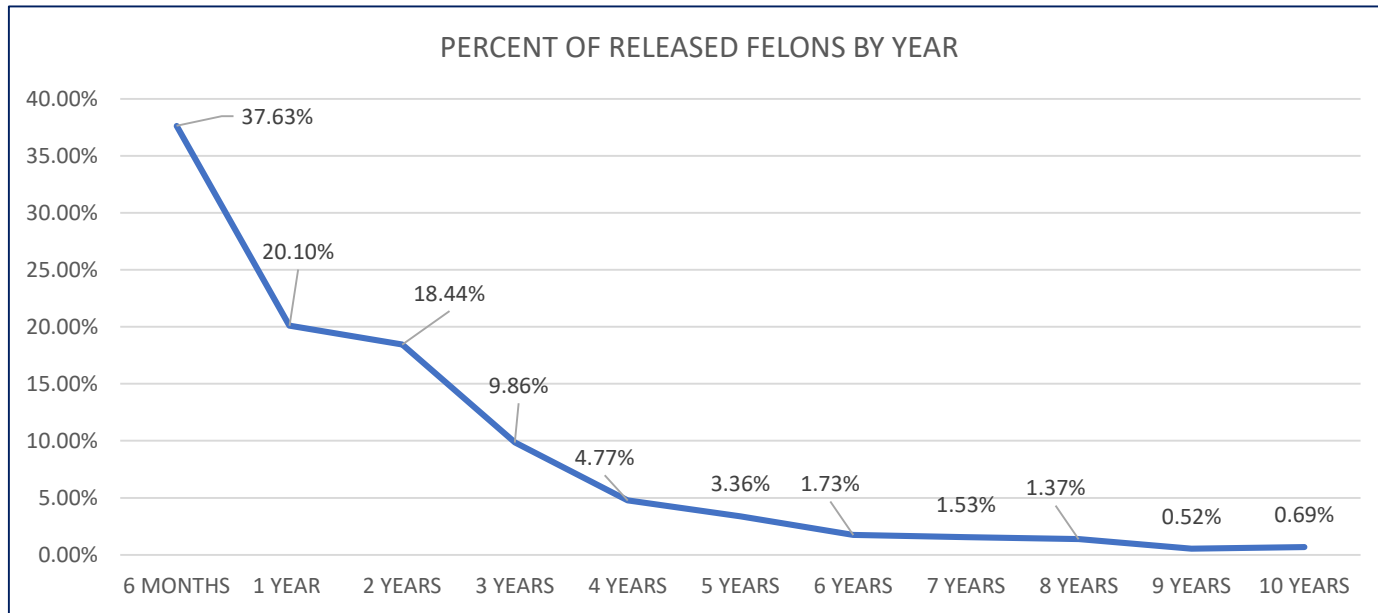
- Recidivism increases as the risk increases.

# WHEN ARE PEOPLE MOST LIKELY TO RETURN?

	<b>6 MONTHS</b>	<b>1 YEAR</b>	<b>2 YEARS</b>	<b>3 YEARS</b>
CY2011	26.09%	43.90%	59.95%	67.47%
CY2012	23.65%	41.40%	57.93%	65.65%
CY2013	24.97%	43.74%	60.31%	67.02%
CY2014	25.20%	43.19%	59.38%	65.07%
CY2015	25.63%	41.45%	56.16%	61.33%

- In any given year, approximately 25% of releases will return to incarceration within six months.
- More than 40% will return within one year.

# LONG-TERM RETURNS



- The highest risk for recidivism is within six months of release.
- After three years, the number of returns to incarceration drops considerably.
- Less than 6% will return between six and ten years post-release.

# PUBLIC SAFETY & PLANNING FOR REENTRY

- Recidivism reduction is an important part of the state's public safety mission.
  - Reentry planning helps offenders successfully resume family and community responsibilities.
- 
- The Department has put programs in place to address the criminogenic risk factors associated with recidivism.

# RECIDIVISM REDUCTION GOALS

- Protect the public.
- Return offenders to our communities ready to work, go to school and have healthy families.



# A PLAN TO ADDRESS NEEDS

Successful reentry begins upon admission and continues through incarceration, release, community supervision and ultimately the unsupervised and successful reintegration into the community.

- Assessing criminogenic needs
  - Anti-social values/beliefs/cognition
  - Anti-social companions
  - Anti-social personality or temperament
  - Family and/or marital
  - Substance abuse
  - Employment
  - Education
  - Leisure and/or recreation
- Offender Management Plan (OMP)
  - A roadmap to determine what programs are needed while in custody.
  - A means of measuring a prisoner's readiness for reentry.

# REENTRY & REHABILITATIVE PROGRAMS

- Reentry coalitions & reentry centers
- Transitional housing programs
- Tenant Based Rental Assistance
- Education programs
- Vocational rehabilitation and job training programs
- Chaplaincy, faith communities & mentoring
- Reentry classes
- Parenting classes
- Alternatives to Violence
- Mental health treatment
  - Acute, subacute and crisis intervention
- Sex offender treatment & polygraphs
- Anger management
- Domestic violence programming
- Probationer Accountability with Certain Enforcement – PACE
- Substance abuse treatment
  - Assessment
  - Psychoeducation
  - Intensive outpatient
  - Residential
  - Dual diagnosis programs
  - Medication assisted treatment
    - Vivitrol
    - Methadone bridging
  - Narcan distribution
  - CRC-specific IOP
  - Peer support programs

QUESTIONS?