

# Impact of the Governor's Proposed Budget to the MSBSD

House Finance Committee Presentation  
March 5, 2019

# Alaska State Student Performance Data

## SAT and ACT College Entrance Exams

Year	SAT Subtest	English Reading Writing	Mathematics	Combined	Percentile
<b>2018</b>	Alaska	<b>561</b>	<b>544</b>	<b>1,105</b>	<b>69%</b>
	National	529	520	1,049	61%

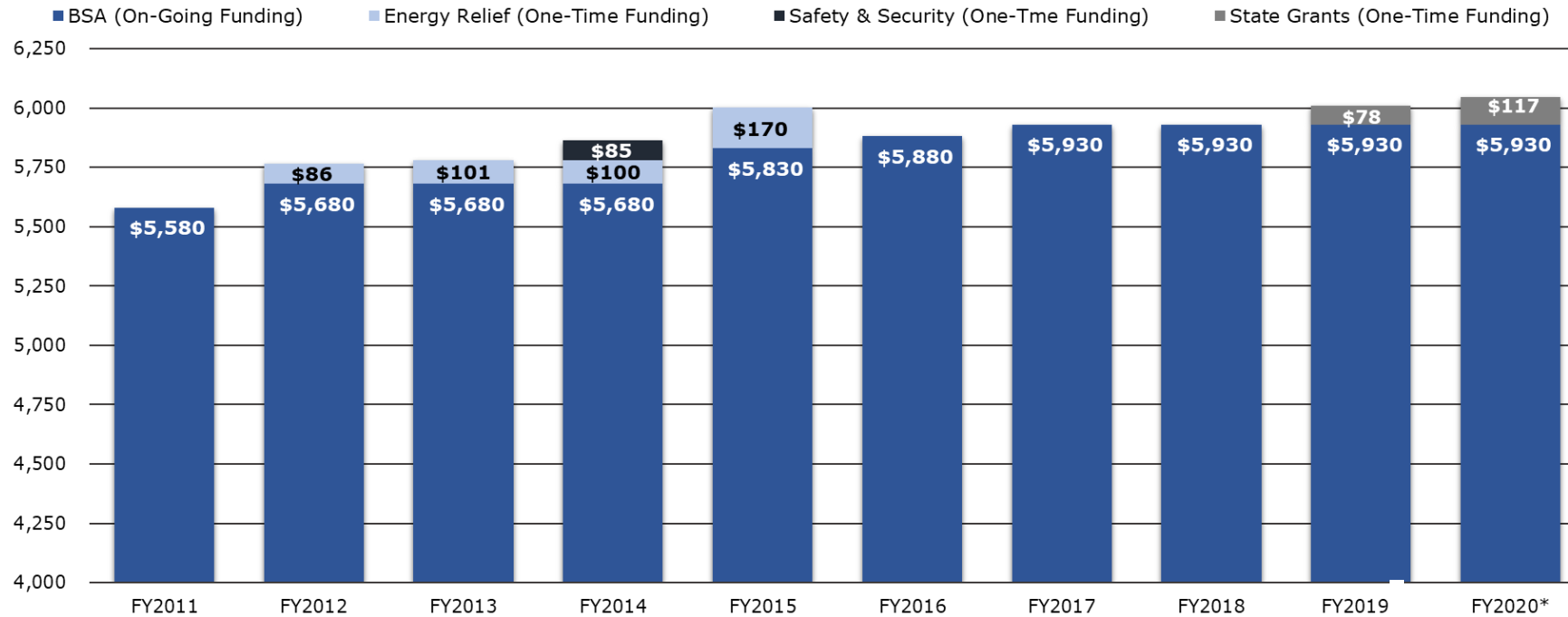
Year	ACT Subtest	English	Mathematics	Reading	Science	Composite	Percentile
<b>2018</b>	Alaska	19.8	<b>20.6</b>	<b>21.6</b>	20.7	20.8	56%
	National	20.2	20.5	21.3	20.7	20.8	56%



# 10 Year History of State Funding

7.5% Increase in Revenue – With FY19 One-Time Monies

12% Increase in the Anchorage-CPI through 2018



# Governor's Proposed Budget

**FY20 Preliminary Budget    \$239,843,230**

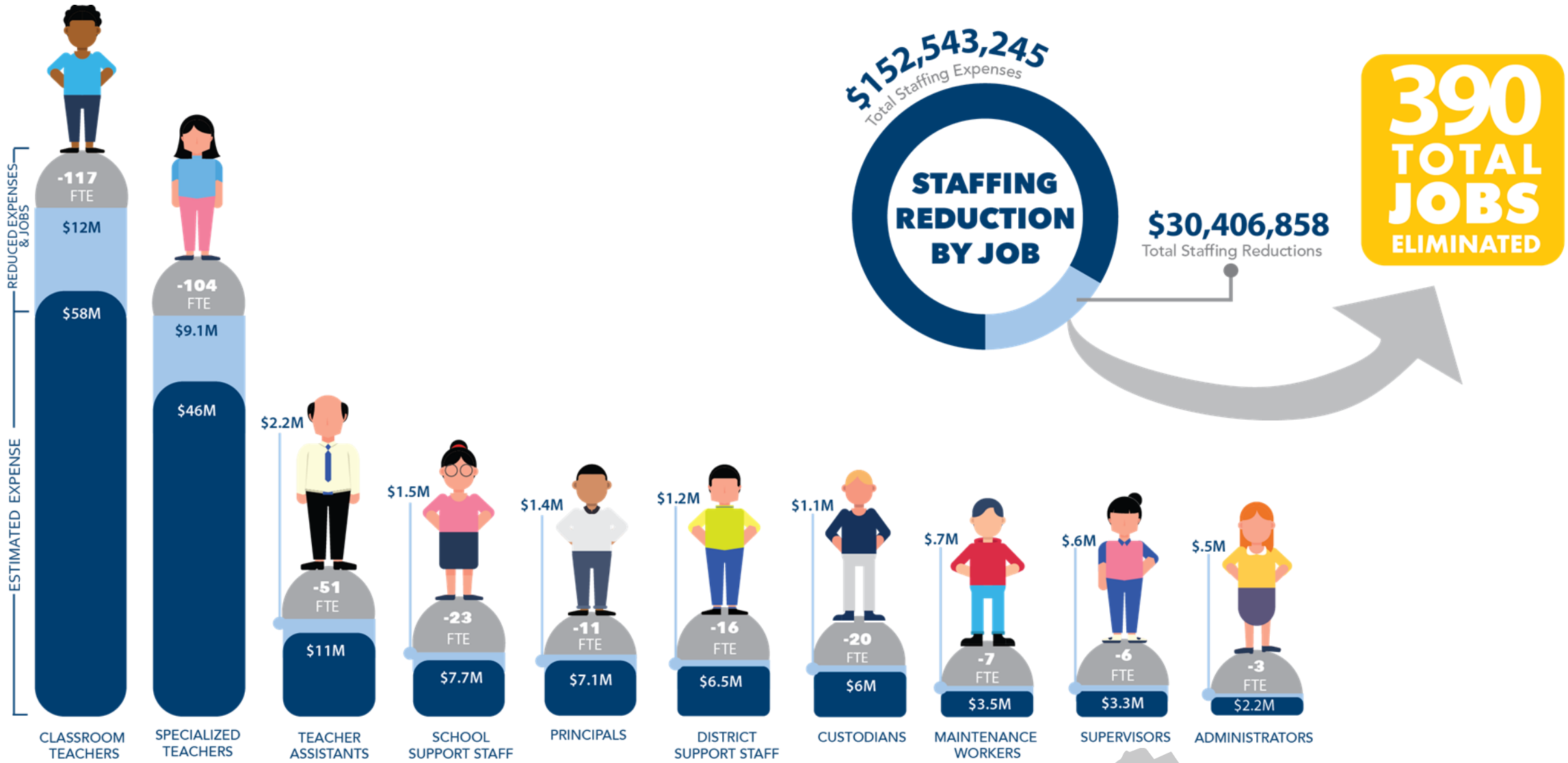
Salaries and Benefits                      -\$30,406,858

Non-Personnel Spending                      -\$6,007,505

Charter Schools                                -\$3,242,078

**Total Reduction            \$39,656,441**





**ACADEMY  
CHARTER**



**AMERICAN  
CHARTER**



**BIRCHTREE**



**FRONTERAS**



**MIDNIGHT  
SUN**

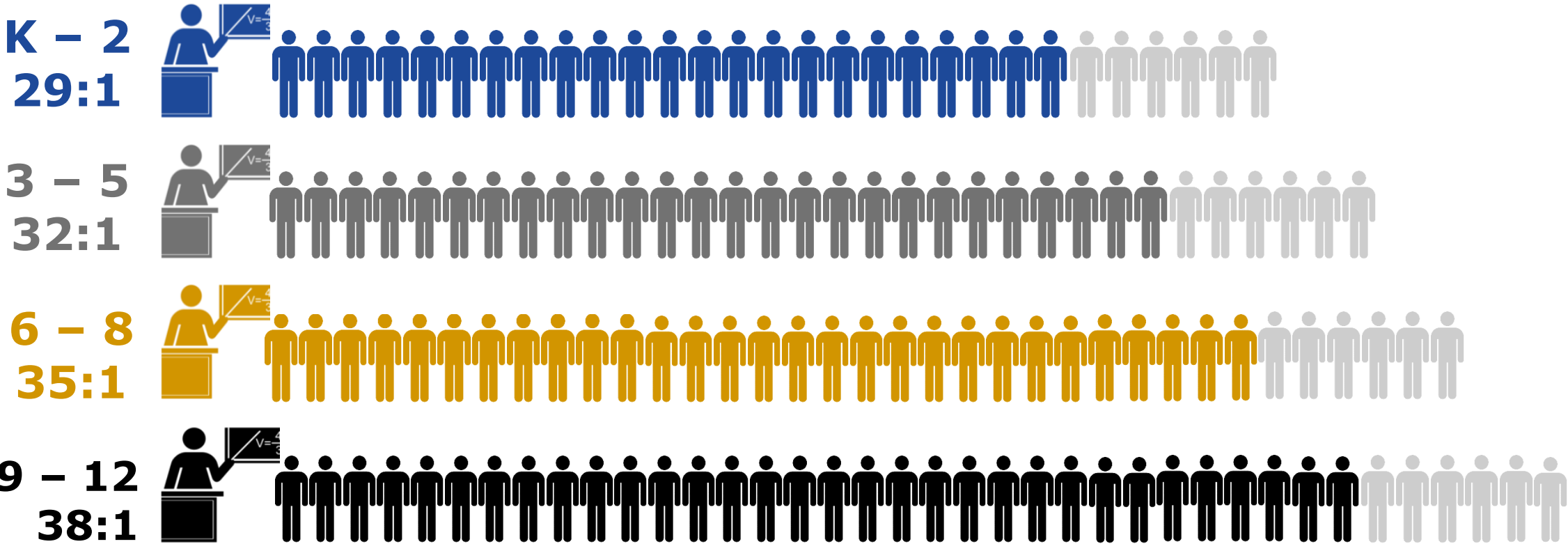


**TWINDLY  
BRIDGE**



# Reduction To Charter School Budgets

# Increased Pupil-to-Teacher Ratios

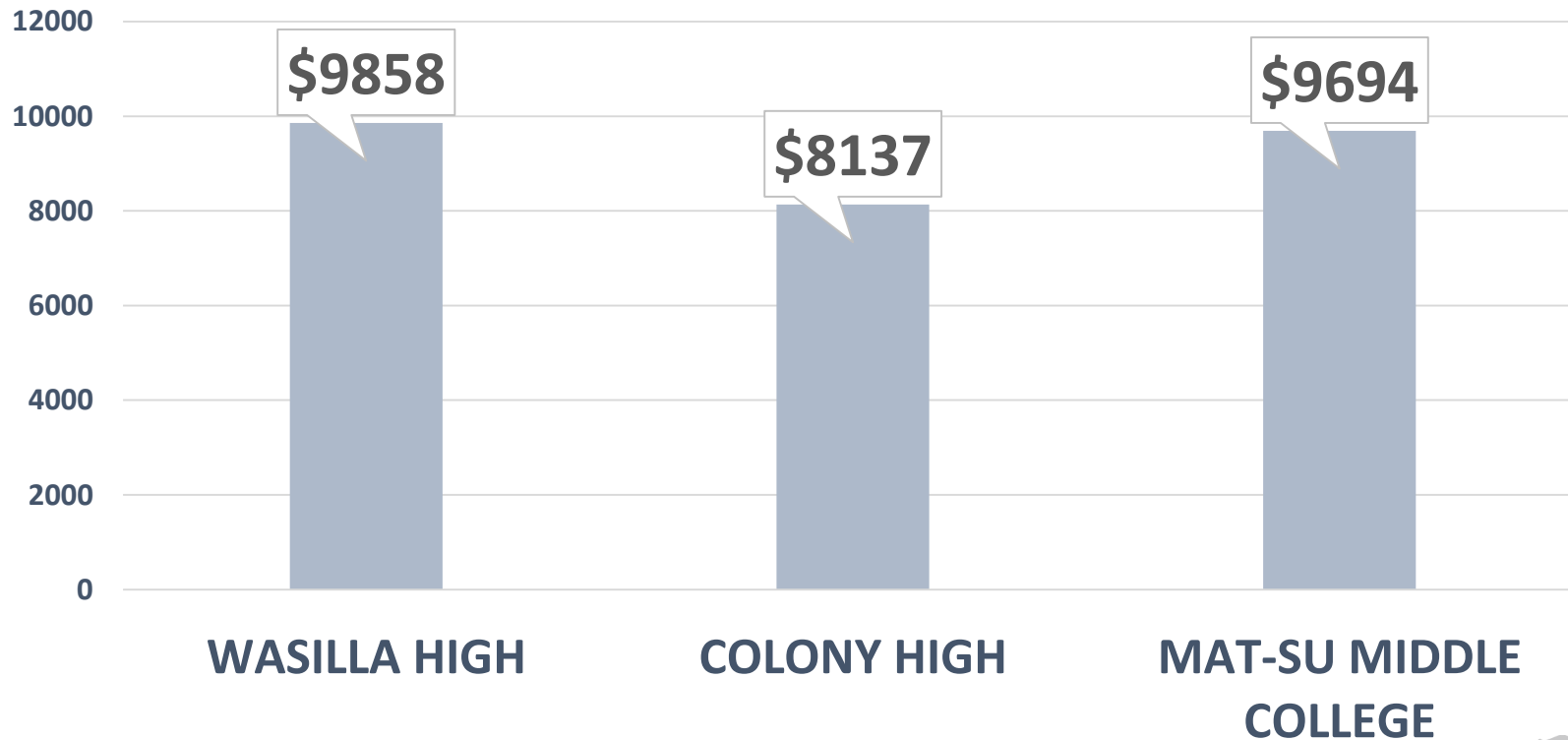


# Employee Contracts

- District Executive Leadership
  - Certified - No rights to position
    - Right to teacher position
  - Classified - No rights to position
- Principals
  - **Notified by March 15 for retention**
    - MOA to extend to May 15
    - Right to teacher position
- District Mid-Level Management
  - 30 Day Lay-Off Notice
- Teachers
  - Tenured – Notified by May 15
  - **Non-Tenured – Notified by May 22**
    - **265 Individuals are Non-Tenured**
- Classified Employees
  - 14 Day Lay-Off Notice



# Impact to Alaska Middle College and ANSEP Accelerated High School



2017 Per Student Cost Comparison

Increased Tuition Rates Compromise Ability to Sustain Middle College Programs

# Impact to Home School Allotments and Local Purchasing Power

## Mat-Su Central School (Home School Program)

- 1,765 Students
- Home School Allotment
  - \$2,200 per student
  - \$2,500 for Junior Year
  - \$2,700 for Senior Year
- 300 Local Vendors
  - Approved to accept allotment money for educational services

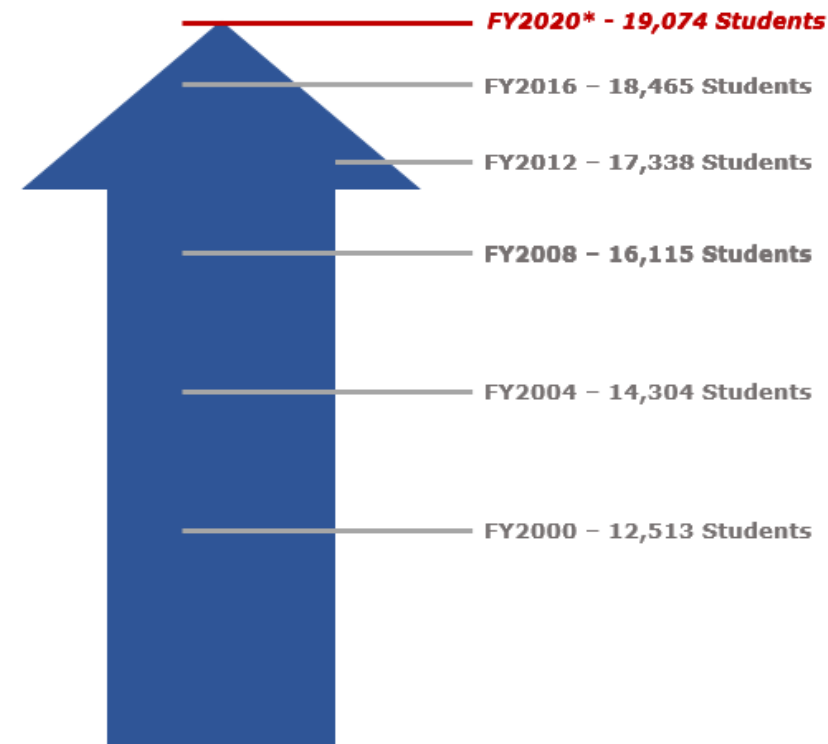
## **\$17.5 Million Spent Locally**

- Supplies and Materials
- Purchased Services
- Lease Payments
- Utilities
- Insurance

# School Bond Debt Reimbursement

## \$19 Million

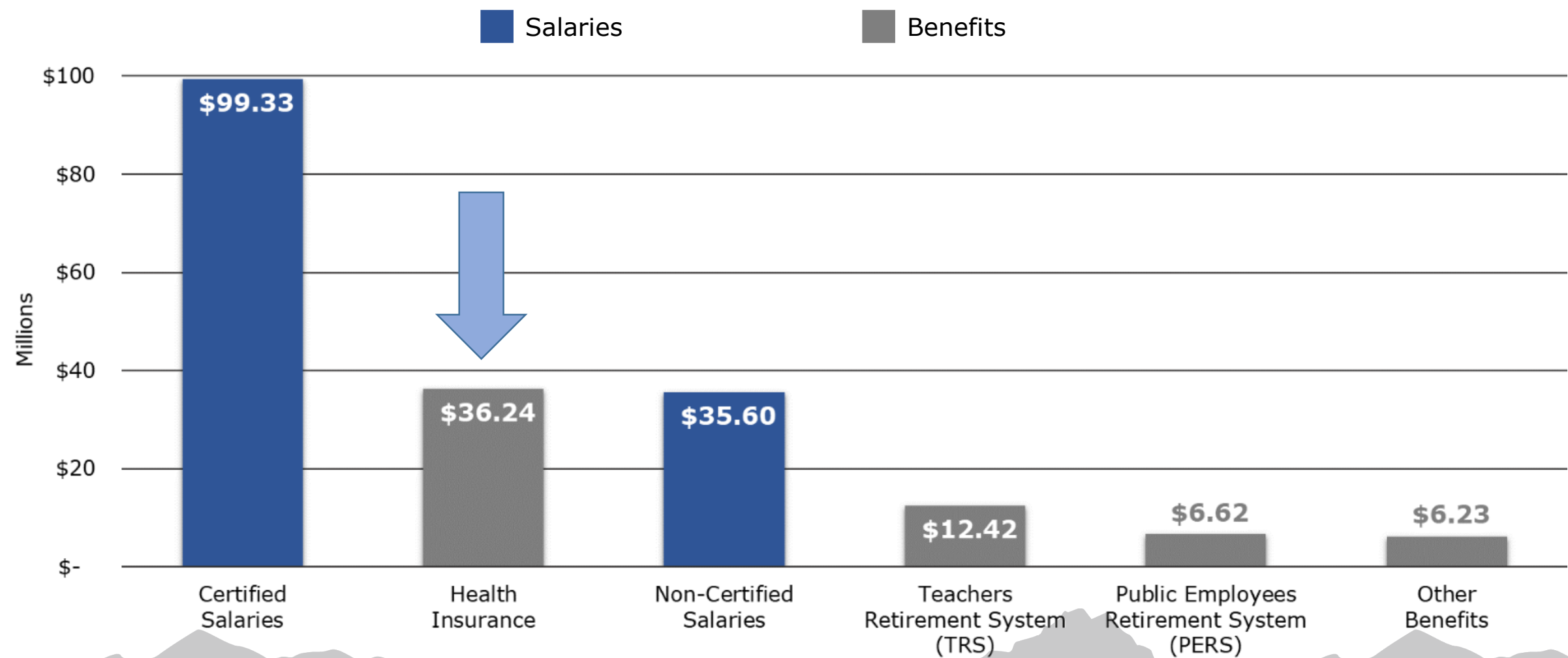
**Mat-Su Grows 65% in 20 Years**



**\$214 Million Bond Package**  
**Voter Approved in 2011**

- Mat-Su Day School
- Valley Pathways
- Career and Tech HS Addition
- Redington Jr./Sr. HS
- Dena'ina Elementary
- Iditarod Elementary
- Additional Projects: District-Wide ADA Upgrades, Restroom Renovations, Energy Upgrades, Generator Replacements, Athletic Facilities, Fire Alarm System Upgrades, Flooring and HVAC

# Cost of Health Insurance



# Mat-Su Graduation Rate Data

