



**Alaska Forest Association**

*maintaining healthy forests for today and tomorrow...*

## **Land Ownership Distribution**

Southeast Alaska

Federal/Forest Service 16,774,000

State of Alaska 286,000

Local Governments 44,000

Native Regional Corp. 293,000

Native Village Corps. 287,000

Small Private Owners 183,000

**Total 17,867,000 acres**



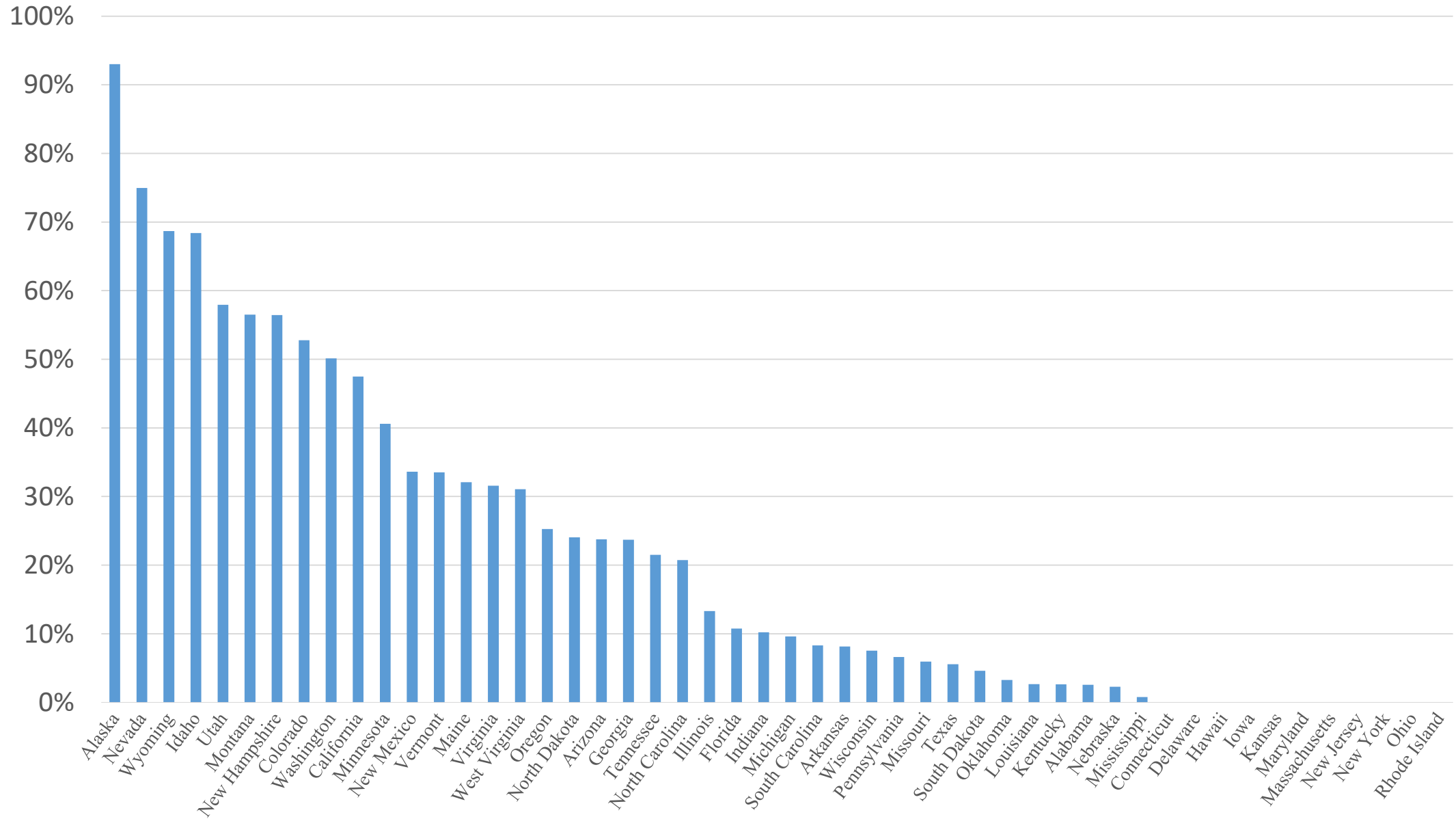
Alaska Forest Association

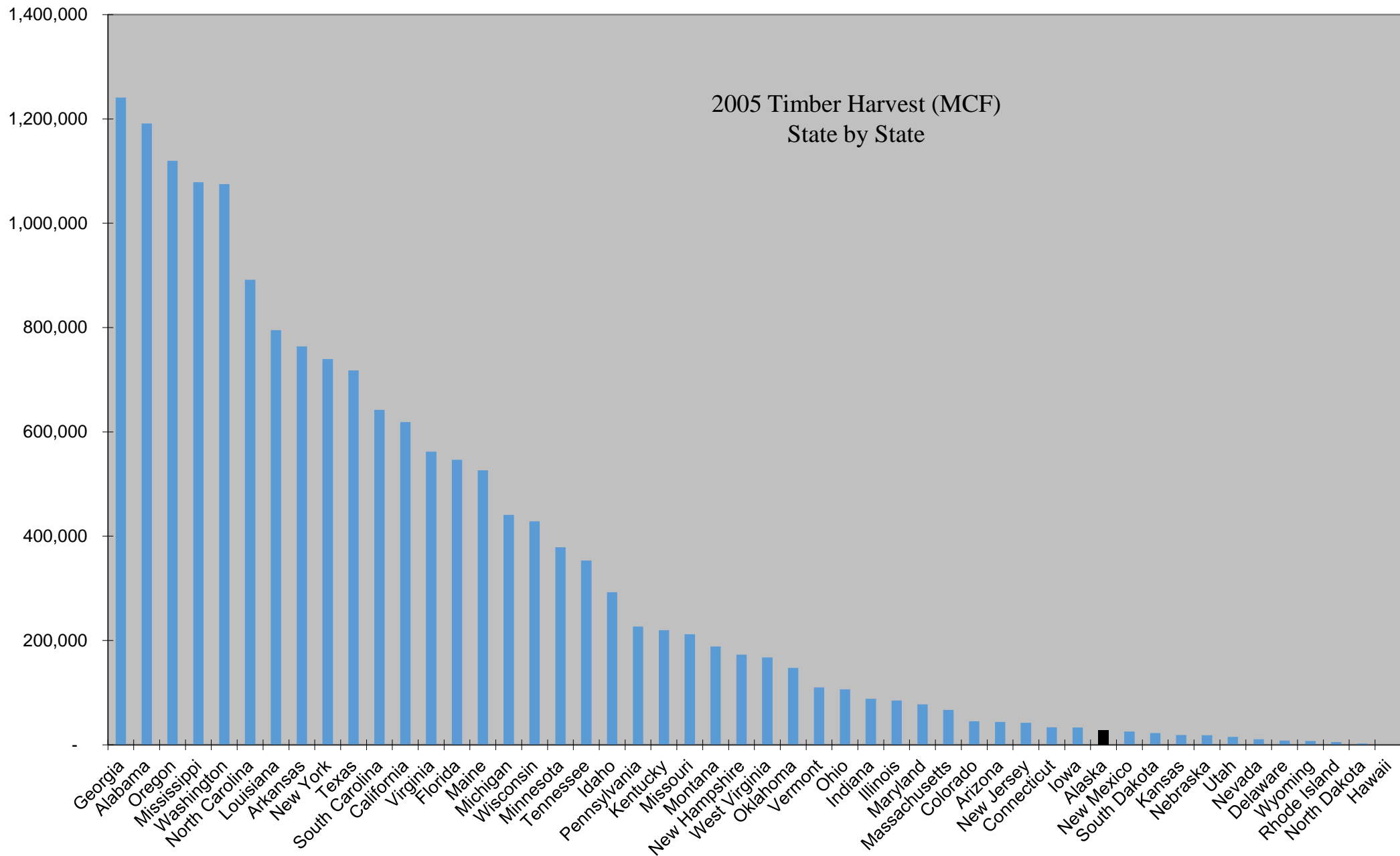
*maintaining healthy forests for today and tomorrow...*

# Commercial Timberland on the Tongass

Acres	Status
2,332,121	Mature timber set-aside by Congress
1,318,183	Mature timber set-aside by TLMP and the Roadless Rule
1,567,746	Mature timber set-aside by the Roadless Rule
284,144	Young-growth timber not set-aside
42,479	Mature timber not set-aside
<hr/>	
<b>5,544,673</b>	<b>Total commercial timber acres on the Tongass</b>

# % of National Forestland that is Roadless and/or Wilderness Within Each State

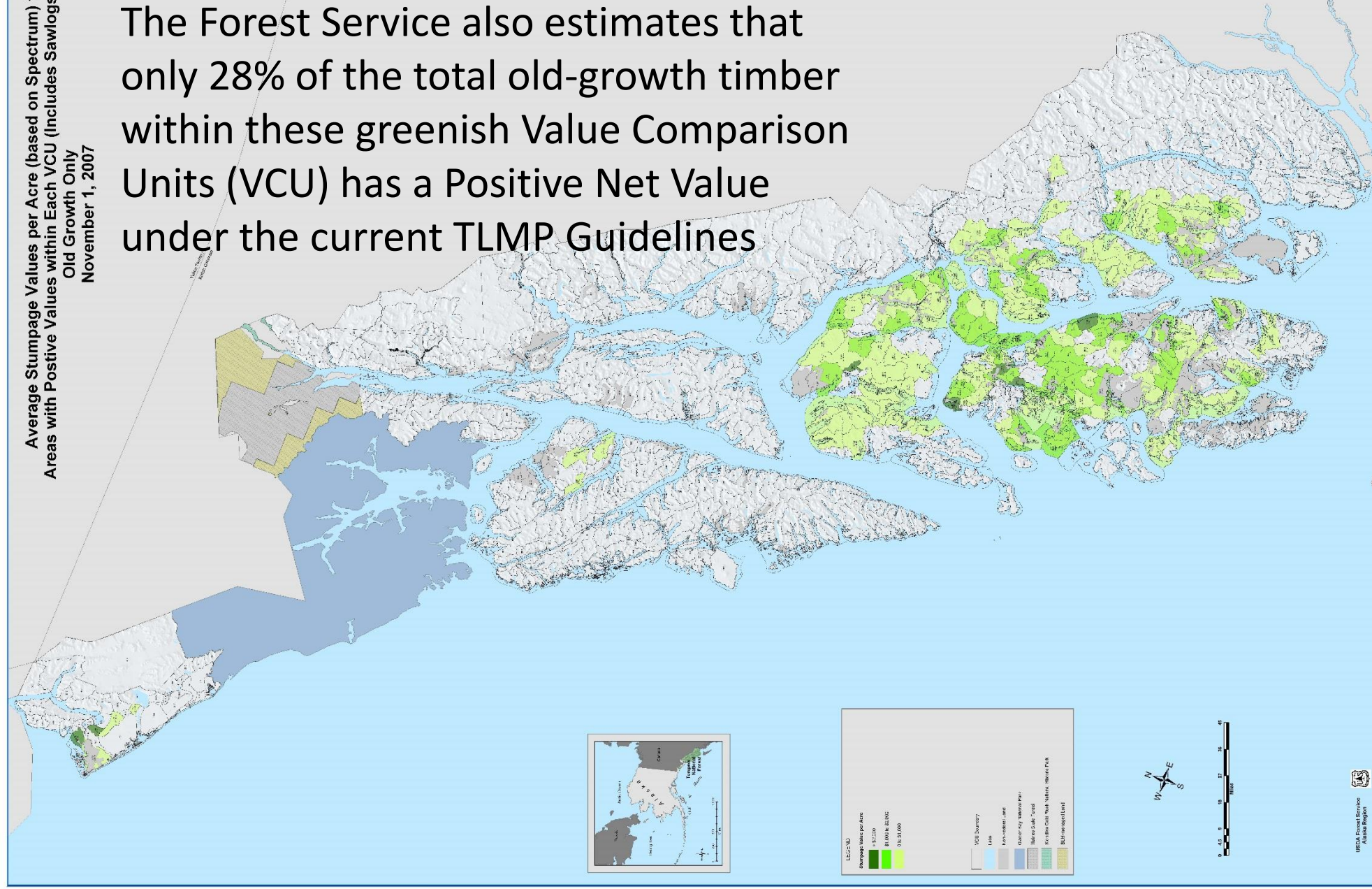




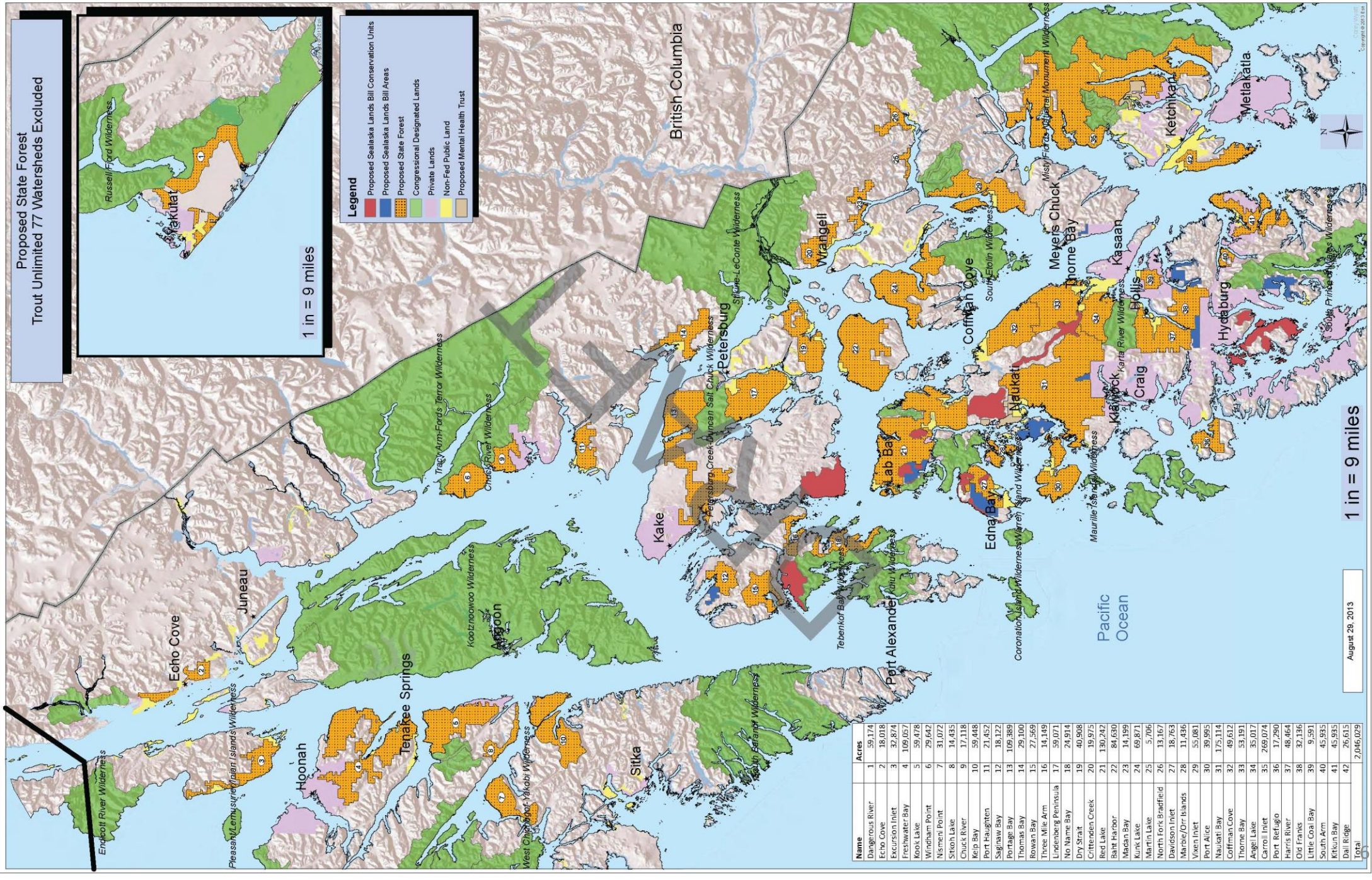
Average Stumpage Values per Acre (based on Spectrum) for  
Areas with Positive Values within Each VCU (Includes Sawlogs Only)  
Old Growth Only  
November 1, 2007

## Green and yellow colors represent the Positive Value VCUs

The Forest Service also estimates that only 28% of the total old-growth timber within these greenish Value Comparison Units (VCU) has a Positive Net Value under the current TLMP Guidelines







Proposed State Forest  
Trout Unlimited 77 Watersheds Excluded

- Legend**
- Proposed Sealaska Lands Bill Conservation Units
  - Proposed Sealaska Lands Bill Areas
  - Proposed State Forest
  - Congressional Designated Lands
  - Private Lands
  - Non-Fed Public Land
  - Proposed Mental Health Trust

1 in = 9 miles

1 in = 9 miles

August 28, 2013

Name	Acres
Dangerous River	1 59,174
Echo Cove	2 18,018
Excursion Inlet	3 32,874
Freshwater Bay	4 109,057
Kook Lake	5 59,478
Windham Point	6 29,642
Nismen Point	7 31,072
Chuck Lake	8 14,435
Chuk River	9 17,118
Kelp Bay	10 59,448
Port Naughton	11 21,452
Sagraw Bay	12 18,127
Portage Bay	13 109,389
Thomas Bay	14 29,100
Rowan Bay	15 27,569
Three Mile Arm	16 14,149
Lindenber Peninsula	17 59,071
No Name Bay	18 24,914
Dry Strait	19 40,908
Crittenden Creek	20 19,975
Red Lake	21 130,242
Salt Harbor	22 84,630
Madan Bay	23 14,199
Kunk Lake	24 69,871
Martin Lake	25 5,706
North Fork Bradfield	26 13,167
Davison Inlet	27 18,763
Marie/Orr Islands	28 11,436
Vixen Inlet	29 55,081
Port Alice	30 39,995
Naukat Bay	31 175,114
Coffman Cove	32 49,612
Thorne Bay	33 53,191
Angel Lake	34 35,017
Carroll Inlet	35 269,074
Port Refugio	36 17,290
Harris River	37 48,464
Old Franks	38 32,136
Little Coal Bay	39 9,591
South Arm	40 45,953
Kricun Bay	41 45,953
Dail Ridge	42 26,615
<b>Total</b>	<b>2,046,029</b>