

# MSBSD Earthquake

## Facilities Status (Feb 4, 2019)

**Overall Status:** As of December 18<sup>th</sup>, 2018 all schools were back in session with only one facility, Houston Middle School, not safe to occupy.

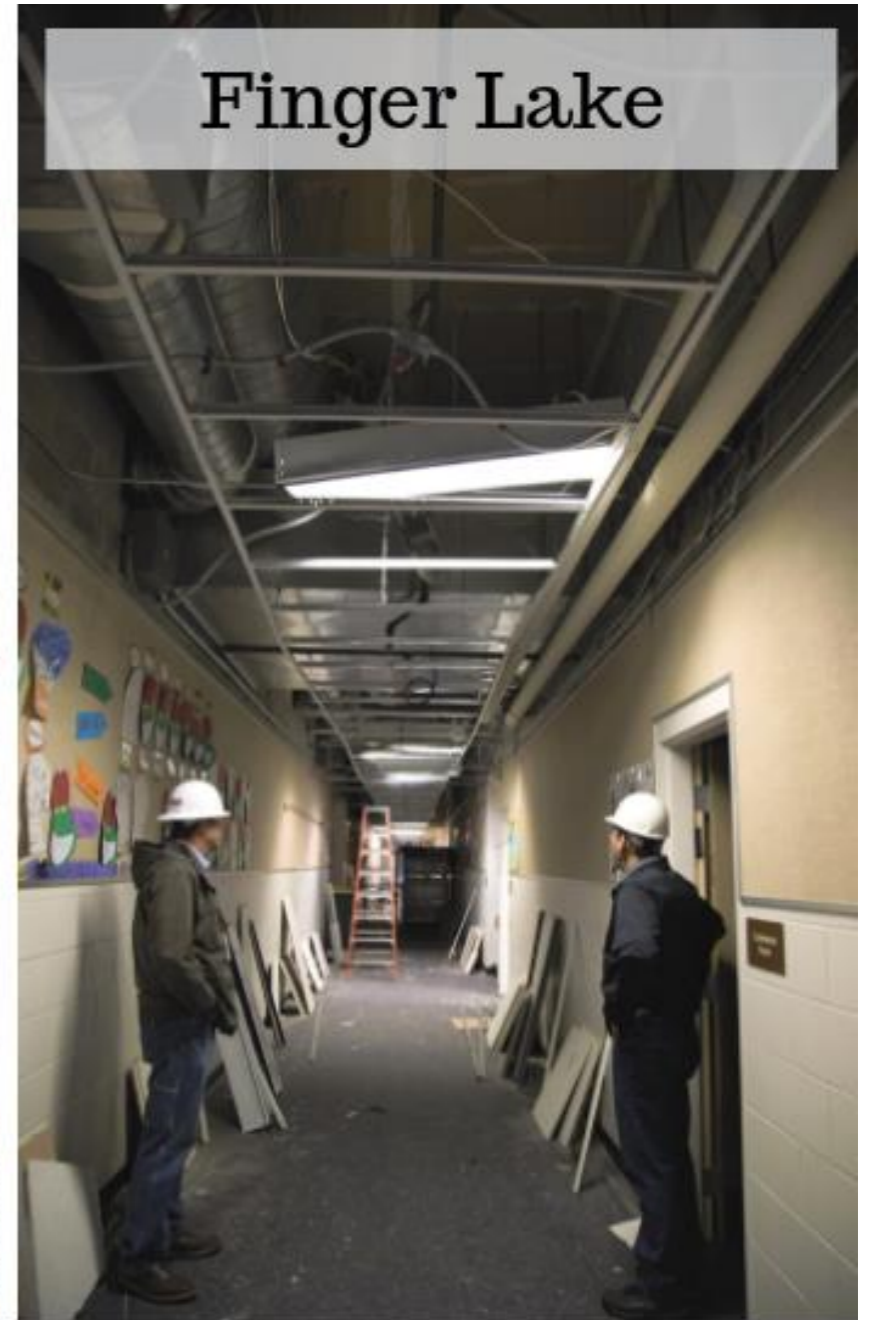
1. Structural assessments completed by PND Engineers.
2. Water testing, fire protection inspections, elevator inspections, snow removal, and well and septic inspections complete. Supplies ordered included bottled water and dispensers, ceiling tile and grid, and fuel.
3. Colony Middle and Finger Lake Elementary Schools significant ceiling grid and tile damage repaired w/in two weeks following the earthquake.
4. District expended approximately \$1M to date for earthquake repairs and response.

Site	Issue(s)	Ongoing Work	Costs
Houston Middle	Significant structural damage to the concrete masonry unit (CMU) especially in the second-story classroom wing and gym.	Burkhart Croft Architects (BCA), including PND Engineers, are developing a repair/replacement scope. Efforts to shore up specific areas has been completed. Expect the preliminary reports from the insurance company and BCA in mid to late February 2019. Follow-on structural engineering analysis likely to take an additional 2-3 weeks. Once these reports are received, we can expect to assess the extent of repair or replacement and associated costs.	TBD
Houston Jr/Sr High	Expand capacity of Houston High campus to meet demands of Houston Middle School.	Houston Middle and High Schools have been consolidated with the majority of middle school students occupying 13 portables recently moved on site. School opened with this new configuration January 7 <sup>th</sup> , 2019.	\$470K
Colony High	Damage to north exterior wall and falling block from a non-bearing CMU partition in the northeast corner of the gym.	The north exterior concrete veneer wall above the track and northeast concrete block wall in the stairwell will be removed and replaced with a steel stud wall assembly along with the ceiling in the stairwell. Work will be complete by the end of February 2019.	\$90K
Wasilla Middle	Non-bearing CMU columns in the northeast wing were not tied into bearing walls.	Removed non-bearing columns and patched and painted walls in northeast wing during winter break (Dec 2018 – Jan 2019)	\$60K
Knik Elementary	Significant ceiling grid and tile failure in gym.	Remaining grid removed during winter break. Final work to be completed over spring break (March 2019).	\$90K

Colony High Gym



Finger Lake



Houston Middle



Colony Middle



Houston Middle

