

Alaska Department of Transportation & Public Facilities

DEPARTMENT FAST FACTS

Prepared for Legislative Session 2019

DEPARTMENT OF TRANSPORTATION & PUBLIC FACILITIES (DOT&PF)

PURPOSE

Keep Alaska Moving through service and infrastructure.

IMPACT

- DOT&PF serves every Alaskan, every day
- DOT&PF provides a safe and efficient transportation system for Alaska to thrive
- DOT&PF provides Alaskans with access to goods, services, economic opportunities, each other and the world

CORE VALUES

- **Integrity:** Doing the right thing even when no one is watching. Doing what you say you are going to do
- **Excellence:** Commitment to continually improve
- **Respect:** Positive regard for customers, stakeholders, investors and colleagues

CORE SERVICES

- Operate Alaska's Transportation Infrastructure
- Preserve Alaska's Transportation Infrastructure
- Modernize Alaska's Transportation Infrastructure
- Provide Transportation Services

VISION STATEMENT

Moving beyond Alaska's challenges while meeting Alaskans' distinct transportation needs through trust, teamwork, and results.

STRENGTHS

- | | |
|---|---------------------------|
| • Strong work ethic | • Interesting challenges |
| • Experience, knowledge, expertise | • Opportunity for growth |
| • Dedicated workforce | • Pride in accomplishment |
| • Reasonable, responsible problem-solvers | • Good people |
| • Quantity and quality of assets | • Willing to lead |



Repairs to Mirror Lake site after earthquake damage. By Alaska DOT&PF

DOT&PF-RELATED ALASKA STATE STATUTES

- AS 44.42 Department of Transportation & Public Facilities
- AS 44.42.067 Alaska Sustainable Energy Act
- AS 44.68.010 Use of State-Owned Vehicles
- AS 44.68.210 Highway Equipment Working Capital Fund
- AS 37.15 Alaska International Airport Funds
- AS 35 Public Buildings, Works, and Improvements
- AS 19 Highways and Ferries
- AS 19.10 State Highway System
- AS 19.10.300 Commercial Motor Vehicle Requirements
- AS 19.25 Utilities, Advertising, Encroachment and Memorials
- AS 19.65 Alaska Marine Highway System
- AS 19.65.050 Alaska Marine Highway System Fund and Budget
- AS 19.75 Knik Arm Bridge and Toll Authority
- AS 2 Aeronautics

FAST FACTS 2019

The Alaska Department of Transportation and Public Facilities (DOT&PF) has jurisdiction over:

- 5,629 center line miles / 11,766 lane miles of roads/highways
- 74 DOT&PF staffed Maintenance Stations
- 239 State Airports
- 2 International Airports
- 10 Ferries (2 new Alaska Class Ferries to be delivered in 2019)
- 35 Ports of Call
- 19 Harbors
- 837 DOT&PF owned bridges
- 2 DOT&PF owned tunnels
- 7,372 pieces of state equipment & vehicles distributed throughout all executive branch departments, Legislative Affairs, and the Court System
- 776 Public Facilities occupied by 17 state and local agencies
- 9 Weigh Stations
- 2.5 mile Anton Anderson Memorial Tunnel – the longest highway tunnel in North America
- Approximately \$9.9B in transportation asset infrastructure



Nelchina workers make haste of cleaning up the Glenn Highway.
By Christina Weimer, Alaska DOT&PF

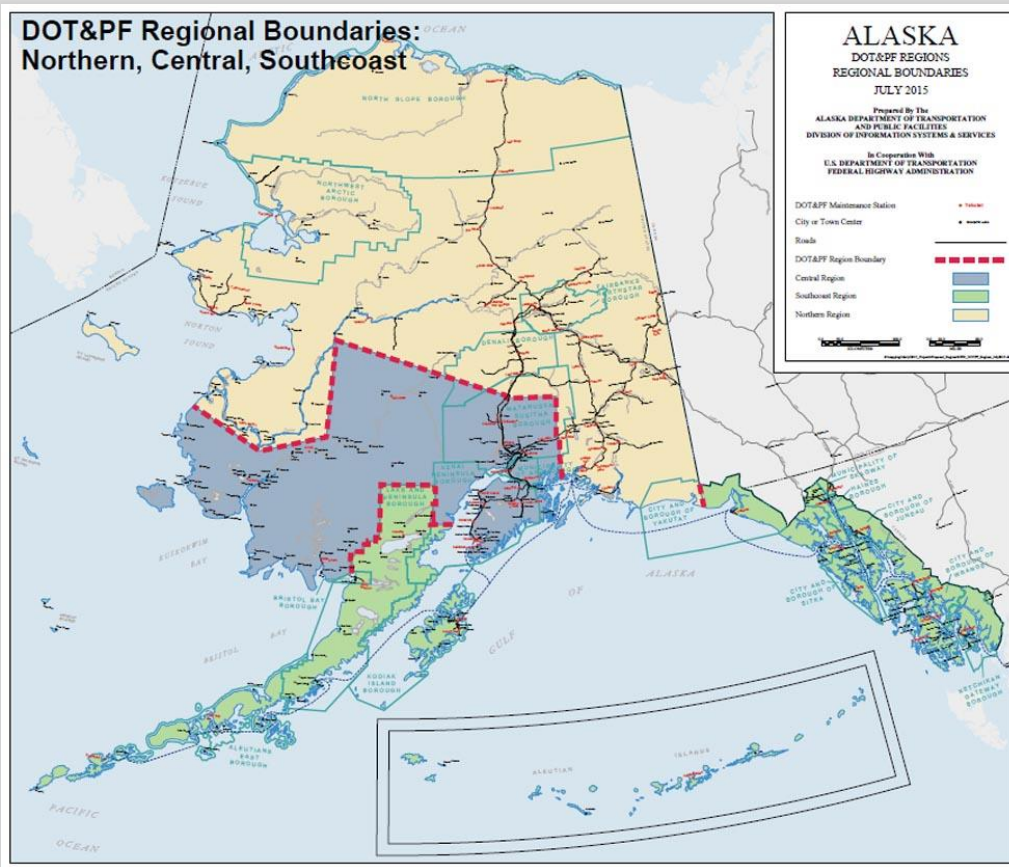
DOT&PF is one of the largest departments, consisting of approximately 3,388 permanent full-time, part-time and non-permanent employees in 8 labor unions in 85 locations throughout the state.

DIVISIONS

- Administrative Services
- Alaska International Airport System / Statewide Aviation
- Alaska Marine Highway System
- Office of the Commissioner
- Design and Engineering Services
- Facilities Services
- Information Systems and Services
- Measurement Standards & Commercial Vehicle Compliance
- Program Development
- State Equipment Fleet

The department is administratively divided into three regions:

- Northern Region headquartered in Fairbanks
- Central Region headquartered in Anchorage
- Southcoast Region headquartered in Juneau



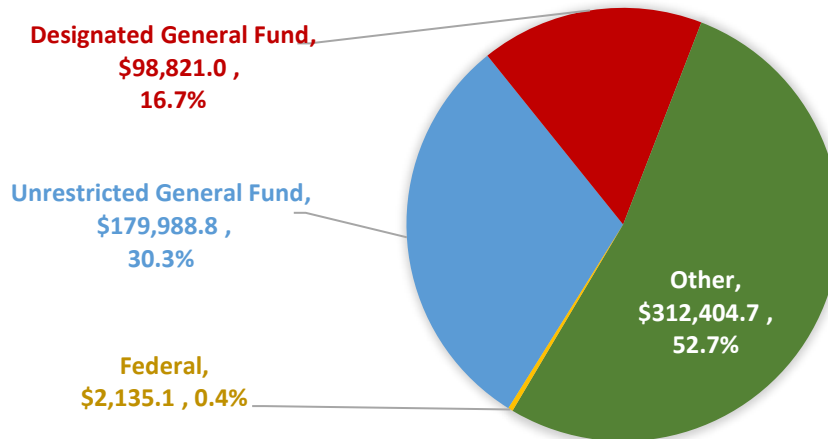
FUNDING

FY2019 OPERATING BUDGET

BY FUND SOURCE

\$593,349.6

(# displayed in thousands)



Position Counts

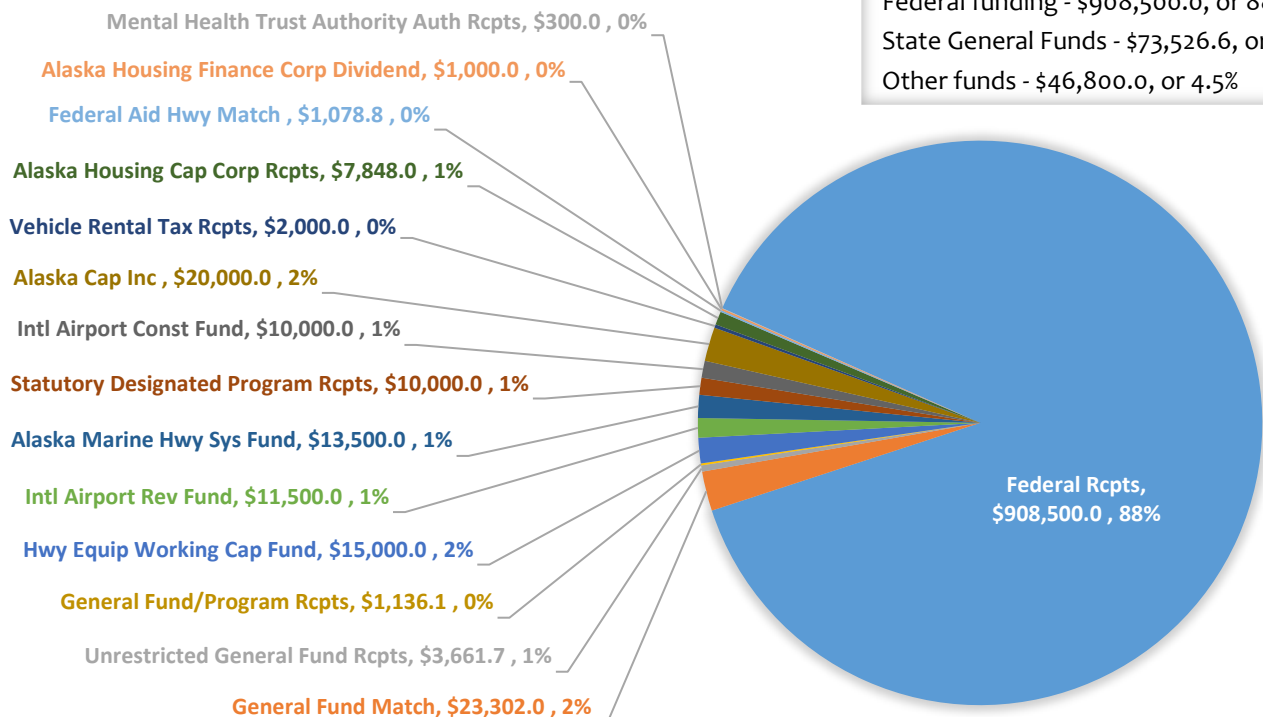
Full-time: 2,924 / Part-time: 331 / Non-perm: 133

FY2019 CAPITAL BUDGET

BY FUND SOURCE

\$1,028,826.6

(# displayed in thousands)



FY2019 Capital Budget: \$1,028,826.6
 Federal funding - \$908,500.0, or 88.3%
 State General Funds - \$73,526.6, or 7.1%
 Other funds - \$46,800.0, or 4.5%

HIGHWAYS and ROADS

The state maintains roads that are part of the National Highway System (NHS) and other arterials, collectors and local roads.

- 5,629 center line miles of roads/highways
 - 3,769 paved
 - 1,860 unpaved
 - 2,229 center line miles of NHS roads
- 5.2 billion annual vehicle miles traveled
- 837 DOT&PF owned bridges
- 2 DOT&PF owned tunnels
- 1,029 total bridges and 3 tunnels inspected by DOT&PF including state, municipal and borough owned
- 9 Weigh Stations
- 4 Safety Corridors
 - Seward Highway, Potter Marsh to Girdwood (MP117 to MP87)
 - Parks Highway, Wasilla to Houston (MP44.5 to MP53)
 - Sterling Highway, Sterling to Soldotna (MP83 to MP93)
 - Knik-Goose Bay Road, Palmer-Wasilla Highway to Point MacKenzie Road (MP.75 to MP17)



Guardrail team starting work. By Maddie Wenzlick, Alaska DOT&PF



Tudor/Bragaw intersection improvements.
By Chong Kim, Alaska DOT&PF



Earthquake damage on Vine Road. By Alaska DOT&PF

HIGHWAY SAFETY

DOT&PF produces annual traffic crash reports. The latest data is from 2017:

- Fatalities – 79 (a decrease of 6% from 2016)
- Alcohol impaired driving fatalities – 22 or 27.8% of all fatalities
- Unbelted fatalities (out of fatalities in seatbelt equipped vehicles only) 17 – 35.4%
- Speeding related fatalities – 26 or 32.9% of all fatalities
- Non-motorist fatalities 17 (16-pedestrians, 1-bicyclist) or 21.5% of all fatalities
- Since 2014, motor vehicle fatalities have been trending up on average by 1.5% per year. In the five years prior to 2014 (2009 – 2013), motor vehicle fatalities trended down on average by 4.0% per year.



One of 47 signs installed in 2011 within four Safety Corridors.
By Brendan Dougherty, Alaska DOT&PF

BRIDGES

1,029 bridges and 3 tunnels on publicly-owned roads inspected by DOT&PF including, state, municipal and borough owned

- 837 bridges owned by the department
 - 81 culverts 20' or greater in diameter
 - 24 ramps at AMHS terminals
- 28 bridges owned by other state agencies
- 164 bridges owned by cities and boroughs
- 2 tunnels owned by the department
- 1 tunnel owned by other state agency



Captain William Henry Moore Bridge Project in Skagway. September, 2018. By Will Coleman, Alaska DOT&PF

ALASKA MARINE HIGHWAY SYSTEM

- 10 Ferries serving 35 ports in Alaska, Prince Rupert B.C., and Bellingham, WA
- 3,500 route miles
- 237,184 total passengers in CY2017
- 95,768 total vehicles in CY2017

Alaska Marine Highway System (AMHS) service is divided into two major systems:

Southeast System – Bellingham north to Yakutat with seven vessels.

Vessels:

- M/V Columbia
- M/V Fairweather
- M/V LeConte
- M/V Lituya
- M/V Malaspina
- M/V Matanuska

Southeast Communities:

- Angoon
- Bellingham, WA
- Gustavus
- Haines
- Hoonah
- Juneau
- Kake
- Ketchikan
- Metlakatla
- Pelican
- Petersburg
- Prince Rupert, B.C.
- Sitka
- Skagway
- Tenakee Springs
- Wrangell
- Yakutat

Southwest System – Cordova west to Unalaska/Dutch Harbor with four vessels.

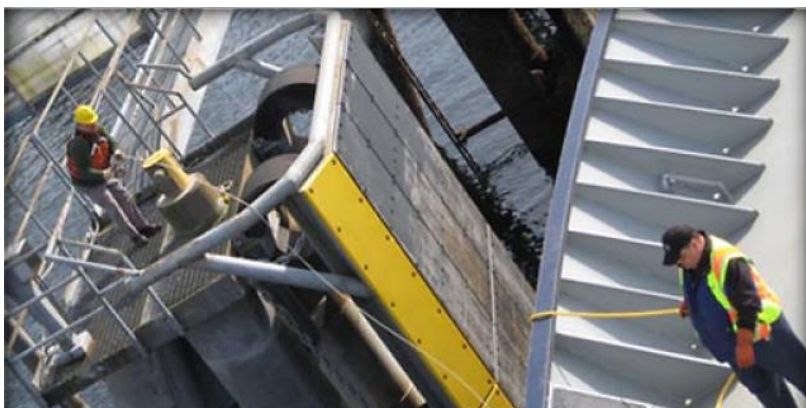
Vessels:

- M/V Aurora
- M/V Chenega*
- M/V Kennicott (serves both Southeast and Southwest with cross-gulf service)
- M/V Tustumena

* M/V Chenega is currently out of service due to budget reductions. This vessel is in long-term un-crewed layup.

Southwest Communities:

- Akutan
- Chenega Bay
- Chignik
- Cold Bay
- Cordova
- False Pass
- Homer
- King Cove
- Kodiak
- Old Harbor
- Ouzinkie
- Port Lions
- Sand Point
- Seldovia
- Tatitlek
- Unalaska/Dutch Harbor
- Valdez
- Whittier



Ketchikan Terminal Agent tying up the M/V Matanuska as ship's personnel secures the line.
By Sabra Lichty, Alaska DOT&PF



M/V Aurora approach at the Whittier Ferry Terminal.
By Jeannie Gilman, Alaska DOT&PF

AIRPORTS

The Alaska Aviation System is the largest aviation system in North America. The State of Alaska owns and operates 239 airports including the Fairbanks (FAI) and Anchorage (ANC) International Airports. ANC is a vital gateway for trade and commerce between North America and Asia. The largest aircraft in the world can land at both of these airports.

Tourism relies heavily on aviation across the state. In 2016, an estimated 1.85 million people visited Alaska, more than twice the population of the entire state. 176 public use airports, and many more unrecorded strips, access the 97 state and 24 national parks.

Alaska's 586,412 square miles of land and water and 2,427,971 square miles of airspace served by:

- 310 certified air carriers providing commercial and on-demand services
- 8,030 active pilots
- 9,254 registered aircraft in Alaska
- 758 recorded landing areas (public, private, and military)
- 113 seaplane bases in Alaska (most in the country)
- 53 paved airports (Note: this is DOT&PF airports, there are many more in Alaska that are paved but not state owned)
- 227 aviation weather camera sites

Ted Stevens Anchorage International Airport

- 1 in 10 jobs in Anchorage tied to the airport for a total of 15,577 jobs
- 5.4 million passengers transit the airport annually
- Lake Hood located at ANC is the world's largest and busiest seaplane base
- #5 Airport in the world for cargo throughput
- #2 Airport in North America for landed cargo weight

Fairbanks International Airport

- 11,800 feet of runway
- 1 in 20 jobs in Fairbanks tied to the airport for a total of 1,900 jobs
- 4 parking spots for heavy cargo aircraft



- Alternate airport for Anchorage
- Regional hub for interior Alaska
- Over 1 million passengers transit the airport annually
- Float pond with 322 tie downs and 185 float pond spaces

Rural Airports are vital to Alaskan communities providing them with access to essential supplies, mail, schools, medical/dental services and travel.

- 82% of the communities in Alaska are not accessible by road
- 251 communities are exclusively accessed by air

ECONOMIC CONTRIBUTION of the AVIATION INDUSTRY in ALASKA

Aviation is a critical component of the economy and vitality of Alaska's communities by supporting local businesses and employing citizens in year round operations.

The industry contributes:

- \$3.8B to the state economy (includes operations of airports and direct spending associated with airports)
- 35,000 jobs, this represents 10% of all jobs in Alaska
- 7.1% of Alaska's gross state product

The Alaska International Airport System (AIAS) represents:

- 471 Employees in the AIAS (368 Anchorage, 103 Fairbanks)
- Ted Stevens Anchorage International Airport has the 5th largest cargo throughput operation in the world and 2nd in the U.S.

One in ten jobs in Anchorage is related to the Airport:

- \$724M in direct annual payroll
- \$303M in annual payroll jobs in the community

One in twenty jobs in Fairbanks is related to the Airport:

- \$225M in economic output
- Ranked 82nd in the nation in total aircraft movements (2015)



Ted Stevens Anchorage Intl. Airport. By Dave Krause, Alaska DOT&PF

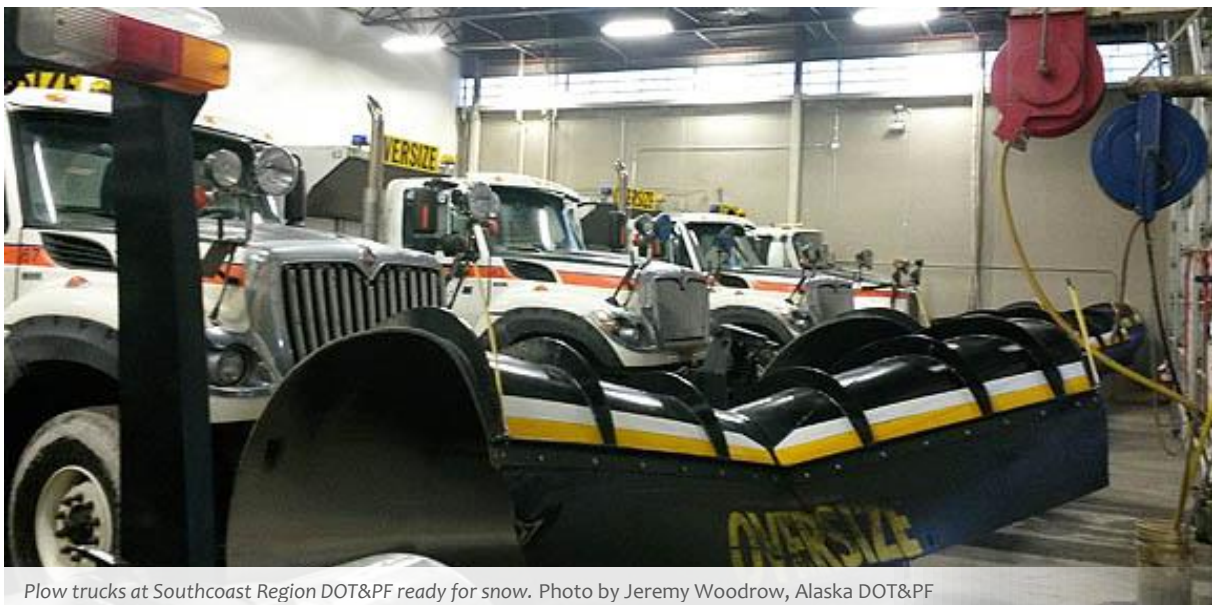


ARFF truck at Fairbanks Intl. Airport. By Alaska DOT&PF

STATE EQUIPMENT FLEET

The State Equipment Fleet (SEF) is responsible for managing the Highway Equipment Working Capital Fund (HEWCF) that procures, maintains, and disposes of fleet assets for all Executive Branch Agencies. SEF also provides fleet support in the form of licensing and maintenance as requested for the University of Alaska and Alaska Housing.

- \$15M Capital Budget for replacement of fleet assets at the end of their useful life
- \$34.4M Operating Budget for maintenance and repair of fleet assets including:
 - \$17.5M Personnel-157 Staff positions statewide
 - \$638K Travel- mostly in support of rural airport equipment maintenance
 - \$2.5M Contractual- Freight and contracted vendor repairs
 - \$13.7M Commodities- Fuel, parts, lubricants, tires, and supplies, including fuel for all state agencies via fuel cards.
- 157 staff to provide statewide services including:
 - 125 technicians and 5 managers supporting 79 maintenance stations and 249 airports
 - 15 parts staff at 7 hubs managing \$8M in annual purchases and inventory
 - 12 contracting, administrative and system support staff to administer the functions of the fleet
 - In FY17 staff spent 500 hours in support of fires for the Department of Natural Resources and over 6,600 hours supporting Maintenance & Operations snow and ice control and Aircraft Rescue and Fire Fighting (ARFF) duties.
- 51 equipment maintenance shops statewide providing support for DOT&PF, the rural airport system and the entire executive branch fleet of vehicles and equipment.
- 7,372 assets for the Executive Branch Agencies; 892 licensed assets from the University system and Alaska Housing Finance Corp, and Alaska Energy Authority.
- Vehicle and equipment rental pools allow sharing of centrally located specialized equipment and services in locations where other rental options are not available.
- Fuel Card program for fuel at private refueling stations. Over 3,000 cards are administered and \$4.0M in fuel costs are billed through the SEF system.



Plow trucks at Southcoast Region DOT&PF ready for snow. Photo by Jeremy Woodrow, Alaska DOT&PF

TRANSIT

- Federal Transit Administration (FTA) Section 5307 grants for urban areas (population over 50,000) are provided directly to Fairbanks North Star Borough and the Municipality of Anchorage from FTA.
- FTA Section 5310 and Alaska Mental Health Trust (AMHT) grants provide funding assistance for senior citizens and persons with disabilities. Anchorage receives their share of these funds directly from FTA.
- FTA Section 5311 grants provide transit capital, operating assistance, and program administration in non-urbanized areas for public transportation (less than 50,000 in population).
- Rural Transportation Assistance Program (RTAP) provides financial assistance for the design and implementation of training and technical assistance projects and other support services in non-urbanized areas.
- FTA currently provides \$1,750,000 annually in Section 5339 Bus & Bus Facility capital funding for rural Alaska. Fairbanks North Star Borough and the Municipality of Anchorage receive their share of these funds directly from FTA.
- Alaska State General Funds (ASGF) provides needed match funds for the above grants.
- Purchased twenty-one vehicles for rural communities and 4,278,983 rides were provided in rural Alaska and Fairbanks. Anchorage reports their rides funded by FTA funds directly to FTA and they are not reflected here. Their rides funded by AMHT are included.
- Awarded \$9,780,560 in FTA funds; \$975,202 in AMHT funds; and \$900,000 in ASGF funds in 2018. Total funding was \$11,429,130.



MEASUREMENT STANDARDS and COMMERCIAL VEHICLE COMPLIANCE

Measurement Standards is responsible for the annual inspection of weighing and measuring devices that are used in any form of commerce and trade. In State Fiscal Year (SFY) 2018:

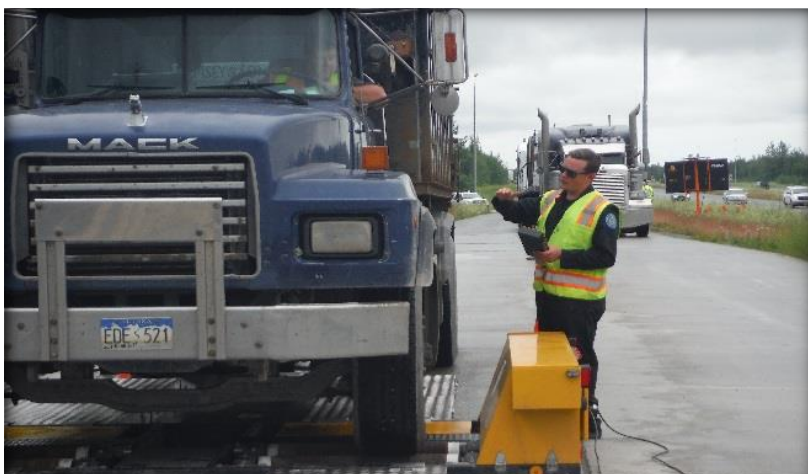
- 18,042 device inspections were conducted statewide
- 11.3% of the inspected devices were rejected or issued a repair notice
- 13,974 retail items were checked for price accuracy with errors found on 0.9%

Commercial Vehicle Compliance (CVC) is responsible for the State vehicle size and weight program and the commercial motor vehicle/driver safety inspection program. These enforcement activities serve to preempt crashes, injuries and fatalities by removing unsafe drivers and vehicles from the road. In Federal Fiscal Year (FFY) 2018:

- 7,909 safety inspections conducted
- 962 unsafe vehicles and 161 unsafe drivers removed from the road
- 7,792 safety violations documented: 6,261 vehicles, 1,454 drivers, and 77 hazardous materials
- 64,313 vehicles weighed at weigh stations and 151 vehicles at mobile roadside checks
 - 586 unpermitted overweight trucks, of which 138 received a written citation
 - Weight compliance was 98.9%

Performance Measures – Commercial Vehicle Compliance

- Reduce the number of Federally-reportable Commercial Vehicle (CMV) related crashes below a rolling 3-year Calendar Year (CY) 2014-2016 average of 99
 - In CY2017 – 52 Federally-reportable CMV-related crashes (preliminary data as of 11/26/18)
 - In CY2018 – 20 Federally-reportable CMV-related crashes (preliminary data as of 11/26/18)
- Reduce the fatality rate below 0.114 fatalities per 100M total vehicle miles traveled
 - In CY2017 – 0.036 fatalities per 100M total vehicle miles traveled (preliminary data as of 11/26/18)



Commercial Vehicle Compliance Inspector Jacob Nelson operates the Performance Based Brake Tester (PBBT) at the Glenn Weigh Station.
By Officer Chris Erickson, Alaska DOT&PF



State Metrologist Garrett Brown in the Measurement Standards Metrology Lab.
Photo by Roger Holland, Alaska DOT&PF

DIVISION OF FACILITIES SERVICES

Facilities Services Initiative: Summer 2015 – Present

- Project goals are to improve both the efficiency and effectiveness of facilities maintenance across all State of Alaska Departments.
- The Executive Facilities Management Advisory Committee (EFMAC) recommended and OMB directed a new Division of Facilities Services be formed in February 2017. The Division of Facilities Services became effective July 2018.
- To date 776 facilities have been integrated into DFS from DOT&PF, DOA and DEED.
- Expanding implementation to the rest of the state agencies in 2019 and 2020, with an anticipated 1,805 facilities integrated at the end state.

Statewide Public Facilities, as part of DFS, is responsible for managing the planning, design and construction of new and renovation projects for most agencies within the State of Alaska.

- Currently managing over 105 projects for 15 different agencies
- Total value of over \$185M

Energy Retrofit Program: 2003 – Present

- Alaska Sustainable Energy Act passed in 2010 - requires the DOT&PF to work with other state agencies to retrofit 25% of all public facilities that are at least 10,000 square feet and greater, not including legislative, court or university facilities.
 - As of the end of 2014, the DOT&PF achieved this goal of retrofitting 25% of those public facilities and has completed energy retrofit projects in over 69 facilities.
- Current annual energy savings of \$3.5M has been achieved from completed projects.
- \$35M in energy retrofit projects have been completed.
- Over 11,500 tons of carbon reduction was achieved as a result of completed projects.
- Currently implementing an energy project for the Anton Anderson Memorial (Whittier Tunnel) with expected completion in 2019.

Currently developing an energy project for the DEC Environmental Health Lab, DOT&PF Southcoast facilities and DOT&PF Central Region street lighting with expected implementation in 2019.



Mount Edgecumbe High School Aquatic Center in Sitka, Alaska. By Alaska DOT&PF

For more information contact:
Mike Lesmann, Legislative Liaison
(907) 465-4772
dot.leg@alaska.gov



Alaska Department of Transportation & Public Facilities
PO Box 112500
3132 Channel Drive
Juneau, Alaska 99811