



Trust
Land Office

SB 88 - Alaska Mental Health Trust Land Exchange with the USFS



The Alaska Mental Health Trust

- A perpetual trust using its resources to ensure a comprehensive integrated mental health program in Alaska.
- Funding programs that serve Alaska's most vulnerable populations for the past two decades.
- Providing programs for mental illnesses, developmental disabilities, Alzheimer's disease and related dementias, traumatic brain injuries & substance abuse disorders.

***Their Mission:** to improve the lives of beneficiaries.*



Trust
Land Office

The Trust Land Office

Manages the Trust owned land and resources to generate revenue, used by the Trust to improve the lives of the beneficiaries.

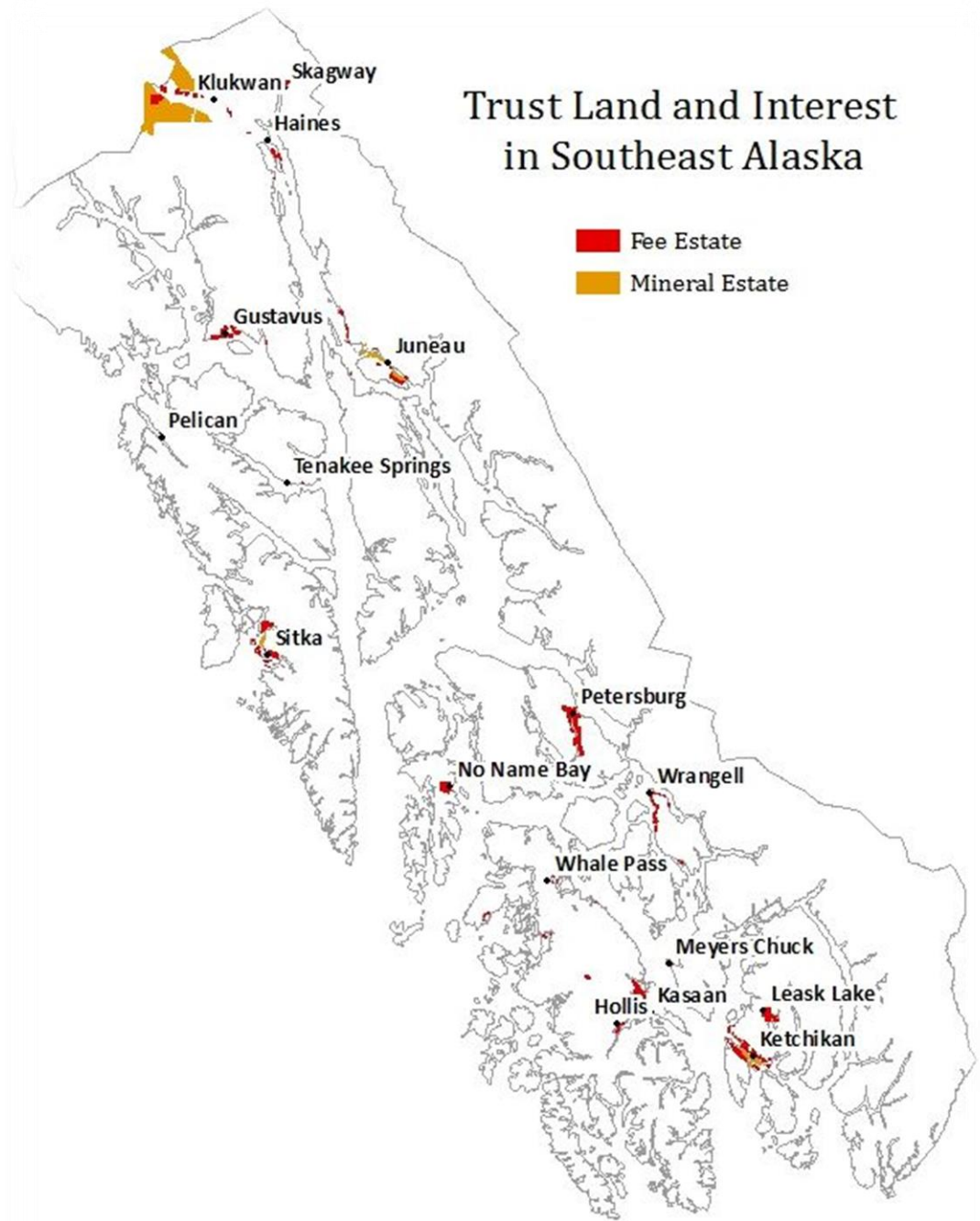
Our Mission: *to protect & enhance the value of Alaska Mental Health Trust lands.*



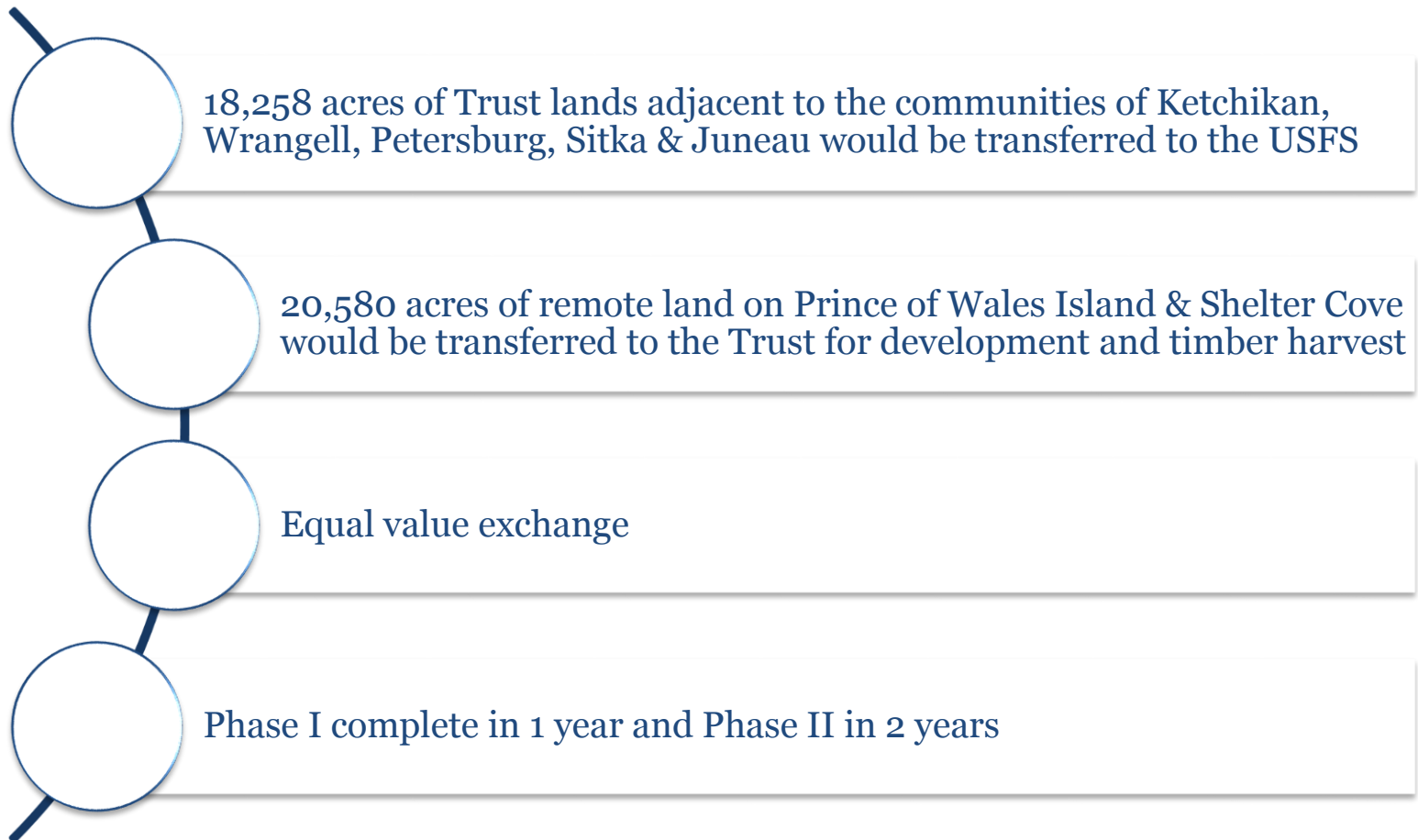
Trust Management Principles

1. Maximize long-term revenue & productivity from trust land
2. Protect corpus
3. Encourage diverse revenue-producing uses of trust land
4. Manage trust land prudently, efficiently & with accountability to the trust and its beneficiaries

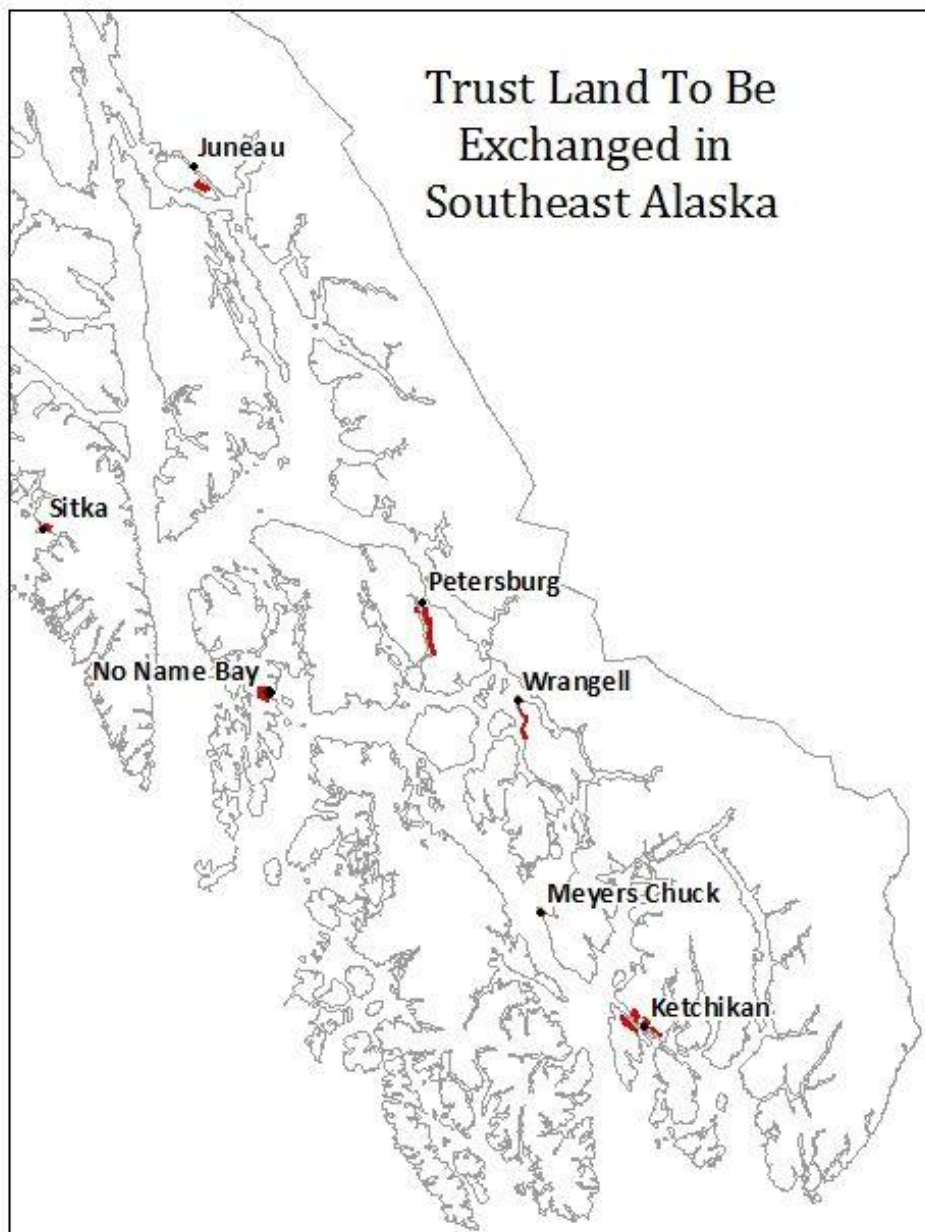
Land Distribution



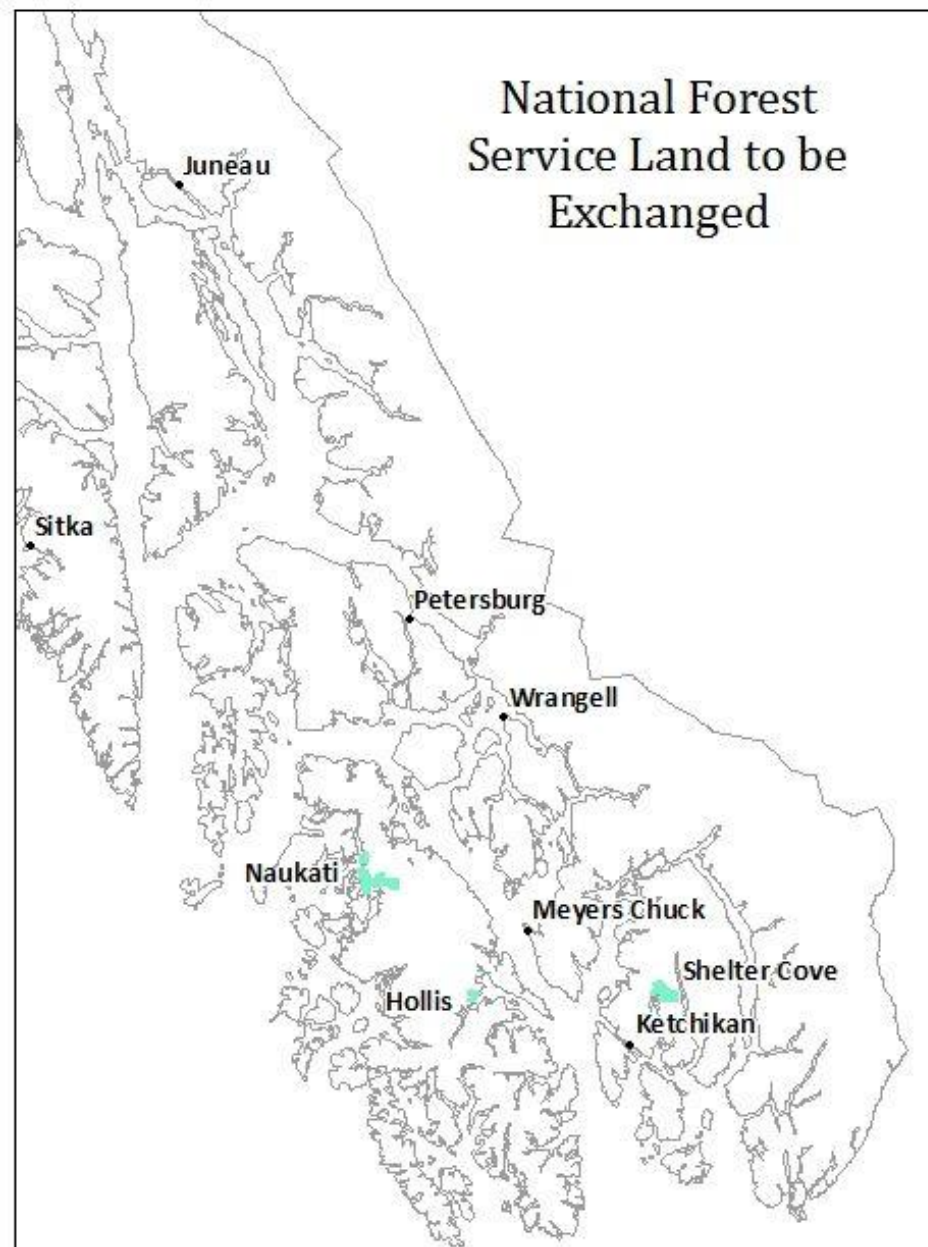
Land Exchange Details



Trust Land To Be Exchanged in Southeast Alaska



National Forest Service Land to be Exchanged



Land Exchange Benefits

Consolidates Trust land ownership

Replaces lands adjacent to communities with lands that are more conducive to revenue production such as from timber harvest

Protects timber and tourism industries

Protects jobs and economies in SE Alaska

Protects viewsheds, watersheds, and certain old growth timber stands

Why Now?

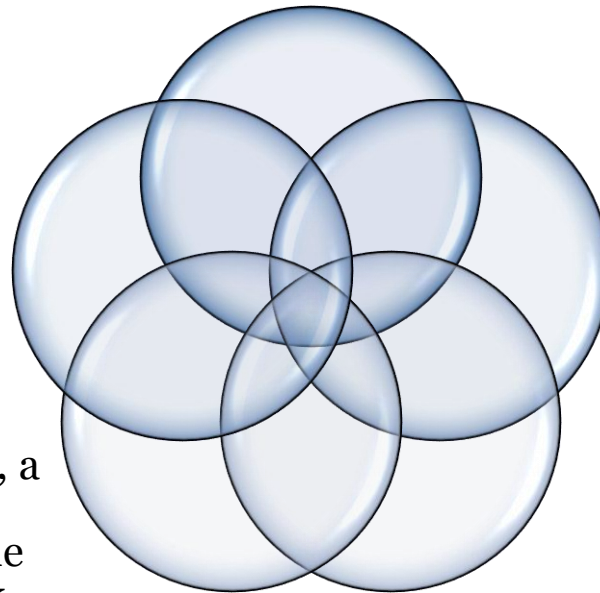
Result of 10 years of
planning and public
input

USFS timber
supplies have
dwindled

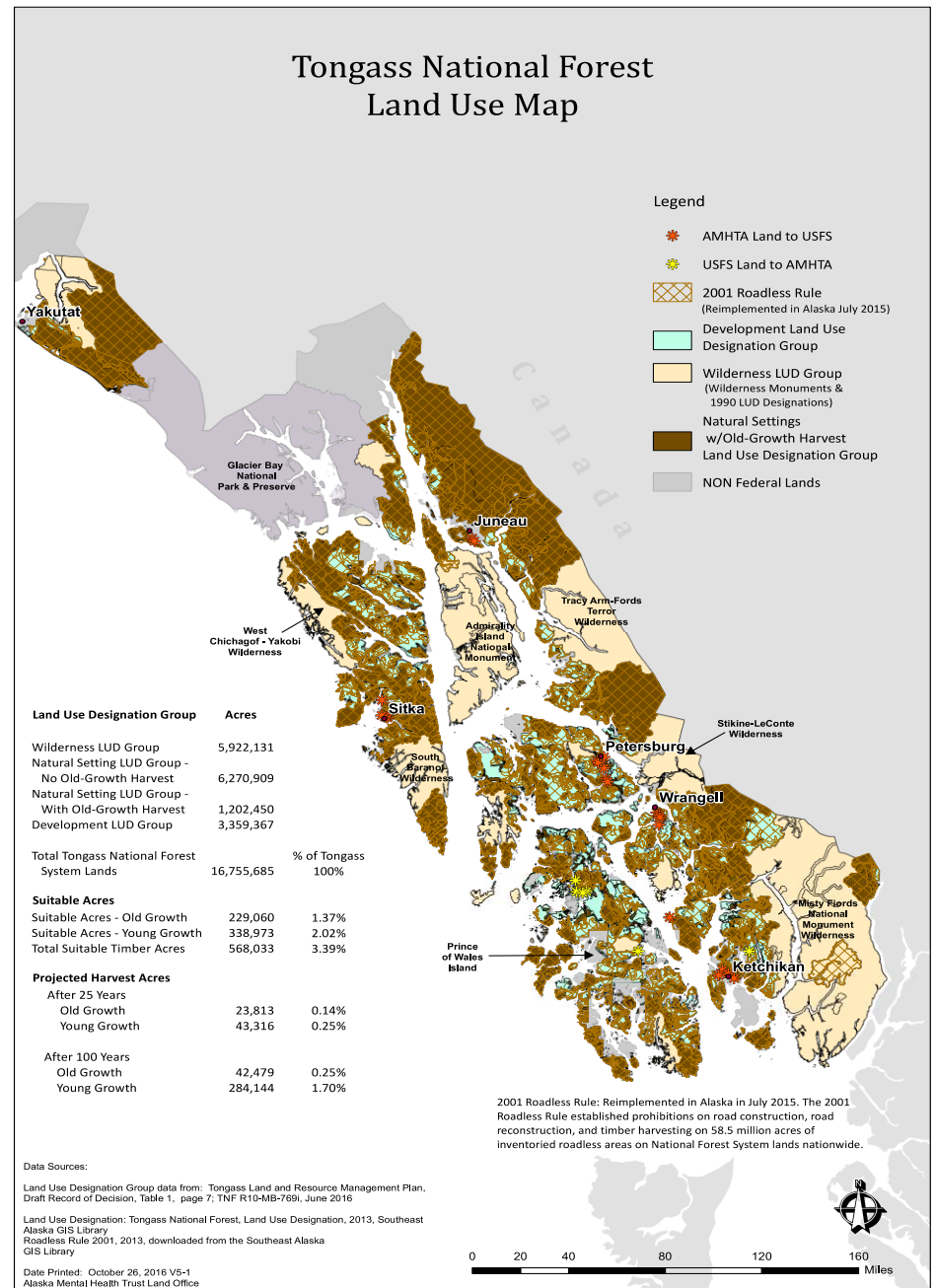
Extensive
negotiations with
USFS

Timber industry, a
key revenue
generator for the
Trust, is at risk
because of low
timber supply

Addressing
concerns from
conservation
groups and other
interests



USFS Forest Plan



Federal Legislation

- S. 131 introduced by Senator Murkowski and Sullivan in January 2017
- HR. 513 introduced by Representative Young in January 2017
- Language compatible with SB 88
- Directs the USFS to complete the exchange

Thank You to Our Supporters

We are grateful to all of the organizations, leaders & individual community members who support the Trust land exchange legislation.

Resolutions

Southeast Conference
City & Borough of Wrangell
Ketchikan Gateway Borough

Supporters

Dan Bockhorst – Ketchikan Gateway Borough
David Landis – Ketchikan Gateway Borough
Cindi Lagoudakis – Petersburg Borough
Julie Decker – City & Borough of Wrangell
David L. Jack – City & Borough of Wrangell
Kim Lane – City & Borough of Wrangell
Curtis Thayer – Alaska State Chamber of Commerce
Clare Doig – Alaska Council of Foresters
Owen Graham – Alaska Forest Association
Senator Bert Stedman – Alaska State Legislature
Representative Dan Ortiz – Alaska State Legislature

Thank You to Our Supporters

Supporters

Randy Ruaro – Alaska State Legislature

Jason Custer – Alaska Power & Telephone Co. (AP&T)

Brian Brown – Alcan Forest Products

Eric Nichols – Alcan Forest Products

Larry Norene – Alaska Mental Health Trust

Mary Jane Michael – Alaska Mental Health Trust

Russ Webb – Alaska Mental Health Trust

Todd Shipp – Alta Forest Products, LLC

Bess Clark – Community Connections

Liz Cornejo – Constantine Metal Resources Ltd

Dennis Reynvaan – Dahlstrom Lumber Co.

William Swift – Greater Ketchikan Chamber of Commerce

Graham Neale – HDI Heatherdale Resources Ltd

Kim Champney – REACH Inc.

Carl Portman – Resource Development Council

Shawn Richardson – Samson Tug & Barge Co.

Shelly Wright – Southeast Conference

Chelsea Goucher – Southeast Conference

Les Cronk – Southeast Stevedoring Corporation

Paul Axelson – Southeast Stevedoring Corporation

Randy Johnson – Tyler Rental, Inc.

Bryce Dahlstrom – Viking Lumber Co., Inc.

Kirk Dahlstrom – Viking Lumber Co., Inc.

James D. Balamaci – Special Olympics

Jerry Jenkins – Anchorage Community Mental Health Services

Adam Molenda – Timber Products Manufacturers Association

Joan O'Keefe – Southeast Alaska Independent Living (SAIL)

Mike Barton – Past Chair of the Alaska Mental Health Trust

Bob Sivertsen

Kristina Woolston

Petersburg Mental Health Services

National Council on Alcoholism and Drug Dependence – Juneau

Chris Maisch – Alaska State Forester, DNR