

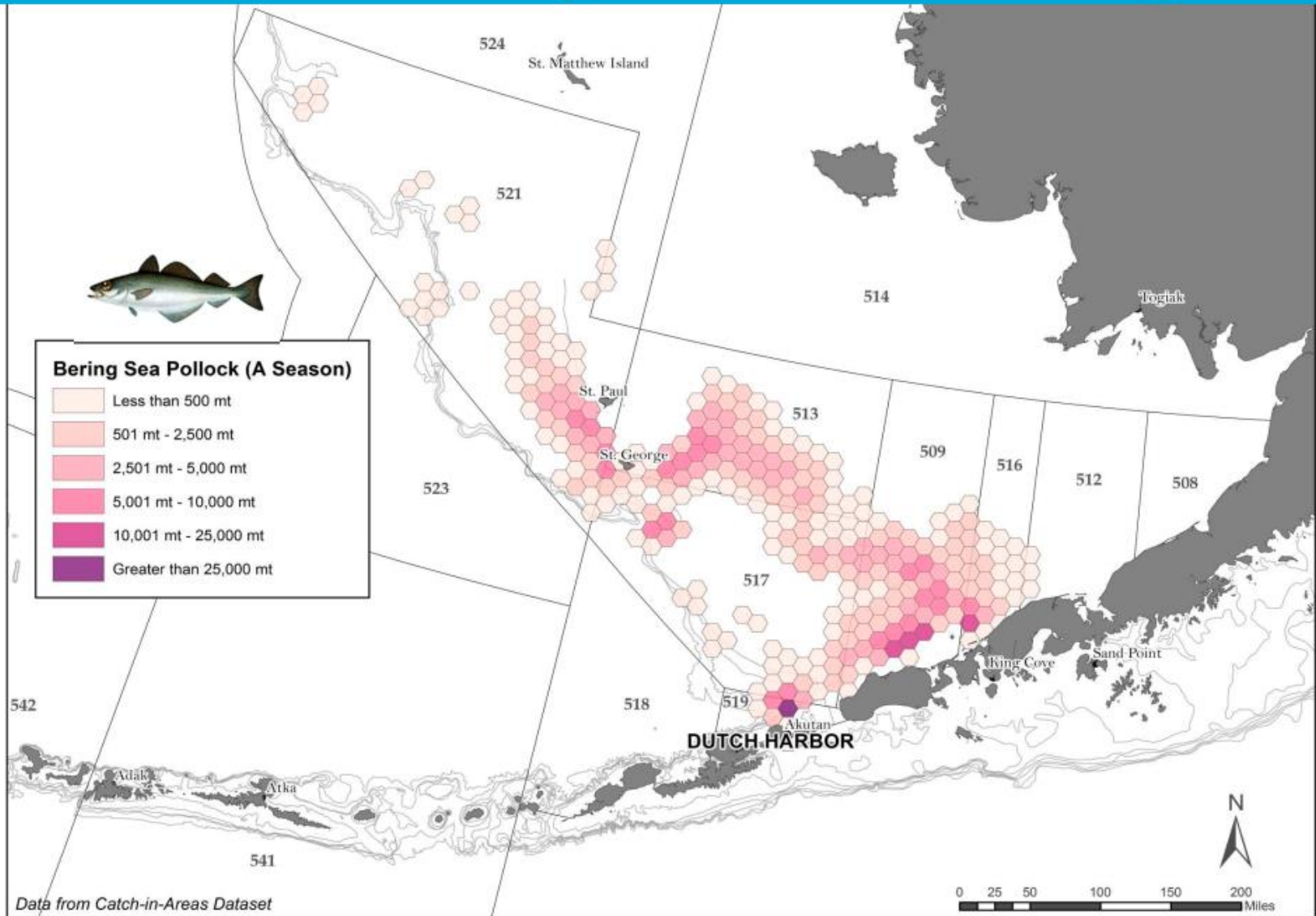
# -Rational Bycatch Management- Using Bycatch Reduction Agreements to Minimize Salmon Bycatch in the Bering Sea Catcher Vessel Trawl Pollock Fishery



Brent Paine - United Catcher Boats  
House Fisheries Committee  
March 9, 2017

# Location of the Pollock Fishery

## 2016 A Season Bering Sea Pollock Directed Fishery



# Bering Sea CV Pollock Fishery

- The American Fisheries Act (AFA), passed by Congress in 1998, rationalized the Bering Sea pollock fishery.
- 91 Shore-based Catcher Vessels (50%)
  - 6 Inshore Catcher Vessel Sector Cooperatives
  - Deliver Pollock to Dutch Harbor, Akutan, Beaver Inlet, Sand Point and King Cove Communities
- 19 Mothership-based Catcher Vessels (10%)
  - Deliver to 3 At-Sea Mothership Processors

# Pollock Fishery Salmon Bycatch Regulations

- Salmon Prohibited Species Catch (PSC) Regulations
  - Chinook Salmon
    - 1995 - 2010 Chinook bycatch regulations used **triggered closure areas** to reduce Chinook bycatch
    - Beginning in 2011 Chinook bycatch is limited by a **hard cap** allocated between the 4 sectors – Amendment 91
  - Chum Salmon
    - Combination of time & area closures and triggered closures
    - Beginning in 2017 chum bycatch managed with Chinook salmon bycatch – Amendment 110

# Pollock Fishery Salmon Bycatch Reduction

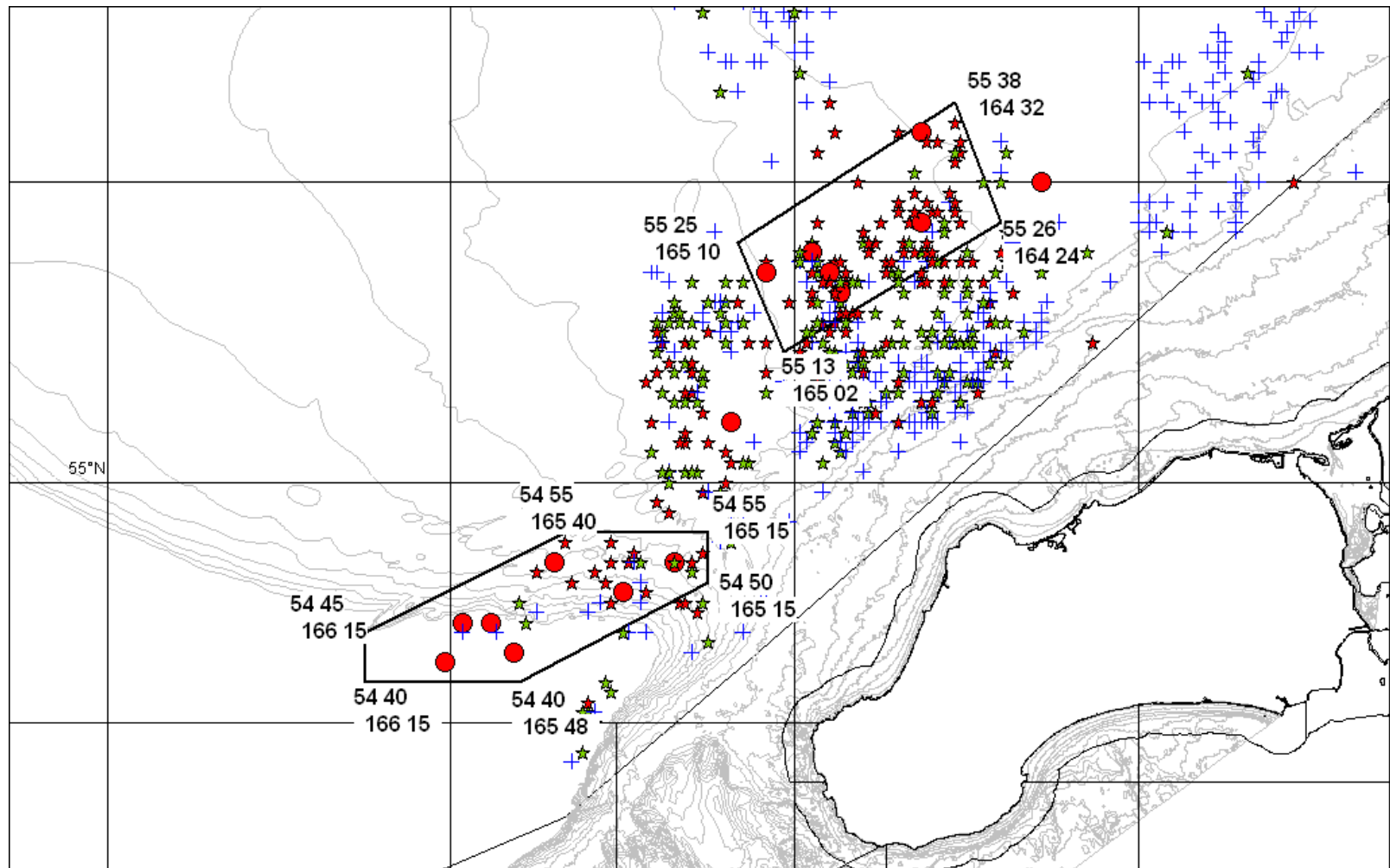
- Governed by Inter-Cooperative Agreements (ICAs)
- Rolling Hot Spot (RHS) Programs Were First
  - 2001 – First Chum Salmon ICA
  - 2002 – First Chinook Salmon ICA
  - Designed to reduce bycatch, therefore reducing the likelihood of reaching regulatory triggers

# Bering Sea Pollock Fishery Bycatch ICAs

- Rolling Hot Spot (RHS) format
  - A series of temporarily closed areas
  - Closure areas determined as the highest bycatch areas in excess of the average fleet bycatch rate
  - Closures applied to vessels with the higher bycatch rates
  - Closure areas enforced for compliance – violators fined for fishing in areas closed to them

# Rolling Hot Spot Closures

High bycatch areas identified by Sea State



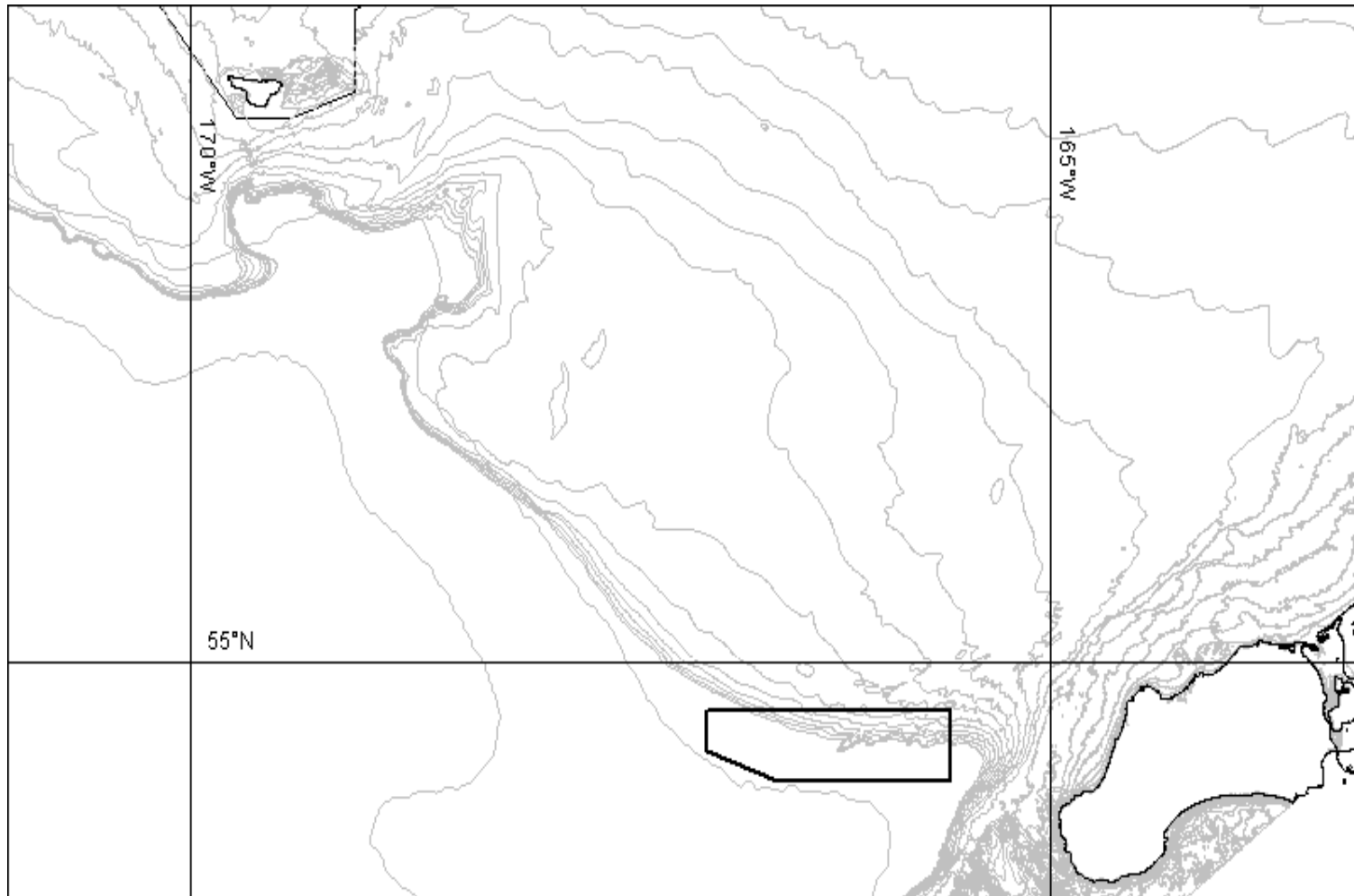
# Bering Sea Pollock Fishery Bycatch ICAs

- Fixed Area Closures
  - A predetermined area with predictably high bycatch from one year to the next
  - Requires multiple years of bycatch data to initially determine the fixed closure area
  - Doesn't require in-season management, only in-season enforcement monitoring by VMS



# Chinook Conservation Area

## - Fixed Closure ICA -



# Bering Sea Pollock Fishery Bycatch Data Requirements

- 100% At-Sea Observer Requirement and Shoreside Offload Monitoring Requirement
- Salmon Counts are based on actual counts, not estimates
- Catcher Vessels required to release electronic data to Sea State
  - Catch data – NMFS observer data and ADF&G fish tickets
  - Vessel Monitoring System (VMS) data
    - Required participants to maintain a constant VMS link

# Chinook Hard Cap And Incentive-Based Program

- New regulations for Chinook salmon came into place in 2011 – Amendment 91
- A Hard Cap was established for Chinook salmon bycatch in the pollock fishery
  - Apportioned by the Four Pollock Sectors
- Concept of allowing vessels access to a higher hard cap provided they demonstrated Chinook avoidance at all levels of encounter
- Concept of ‘Saving’ Chinook Salmon by Incentives

# Amendment 91

## 2011 Chinook Salmon Bycatch Reduction Regulations

- Three Options
  1. 60,000 Hard Cap with IPA - Incentive Plan Agreement
    - Apportioned between the four pollock sectors: Inshore CV, Mothership CV, Catcher/Processor & CDQ

# Amendment 91

## 2011 Chinook Salmon Bycatch Reduction Regulations

- Three Options
  1. 60,000 Hard Cap with IPA – Incentive Plan Agreement(s)
  2. 47,591 Hard Cap with no IPA

# Amendment 91

## 2011 Chinook Salmon Bycatch Reduction Regulations

- Three Options
  1. 60,000 Hard Cap with IPA – Incentive Plan Agreement
  2. 47,591 Hard Cap with no IPA
  3. Up to 28,496 in an Opt Out Pool –  
For vessels choosing not to  
participate in an existing IPA

# IPA Requirements

1. Provide incentives at the individual vessel level
2. Incentivize vessels to avoid Chinook bycatch at all levels of abundance in all years
3. Reward vessels that successfully avoid Chinook and/or penalize vessels that fail to avoid Chinook

# IPA Requirements

4. Incentives must influence fishing decisions at levels below the hard cap
5. Hold Bycatch to a Performance Standard of 47,591 in most years



# IPA Requirements

- The Incentive Plan Agreement must describe how each vessel will manage their bycatch to keep total bycatch below the sector level regulatory Performance Standard
  - The Agreement must contain rules to prevent the sum of vessel bycatch within a sector from exceeding that sector's portion of 47,591 in any 3 years within a consecutive 7 year period

# SSIP

## SALMON SAVINGS INCENTIVE PLAN

### Inshore Sector

IPAs found at:

<http://www.fakr.noaa.gov/sustainablefisheries/bycatch/default.htm>

# Inshore SSIP Description

- Each vessel receives a Base Cap Allocation – its share of 47,591 – the **Performance Standard**

# Inshore SSIP Description

- Each vessel receives a Base Cap Allocation – its share of 47,591 – the Performance Standard
- Base Cap Allocations are made pro rata to a vessel's pollock allocation

# Inshore SSIP Description

- Each vessel receives a Base Cap Allocation – its share of 47,591 – the Performance Standard
- Base Cap Allocations are made pro rata to a vessel's pollock allocation
- Vessels may not exceed their Base Cap Allocation unless they earn Salmon Savings Credits or receive a transfer of Base Cap from another vessel

# SSIP Description

- Each vessel receives a Base Cap Allocation – its share of 47,591 – the Performance Standard
- Base Cap Allocations are made pro rata to a vessel's pollock allocation
- Vessels may not exceed their Base Cap Allocation unless they earn Salmon Savings Credits or receive a transfer of Base Cap from another vessel
- Savings Credits bridge the gap between the Performance Standard and the Hard Cap at the individual vessel level

# SSIP Description – Inshore Sector

- Salmon Savings Credits
  - When a vessel's annual bycatch falls below its Base Cap it earns Salmon Savings Credits.

# SSIP Description – Inshore Sector

- Salmon Savings Credits
  - When a vessel's annual bycatch falls below its Base Cap it earns Salmon Savings Credits.
  - One credit is earned for every 3 salmon avoided below their Base Cap.



# SSIP Description – Inshore Sector

- **Salmon Savings Credits**
  - When a vessel's annual bycatch falls below its Base Cap it earns Salmon Savings Credits.
  - One credit is earned for every 3 salmon avoided below their Base Cap.
  - Credits are saved in a Salmon Savings Credit Account. Unused credits expire after 3 years.

# SSIP Description – Inshore Sector

- **Salmon Savings Credits**
  - When a vessel's annual bycatch falls below its Base Cap it earns Salmon Savings Credits.
  - One credit is earned for every 3 salmon avoided below their Base Cap.
  - Credits are saved in a Salmon Savings Credit Account. Unused credits expire after 5 years.
  - Vessels may not exceed their share of the 60,000 Hard Cap in any given year even if they have Salmon Savings Credits to do so

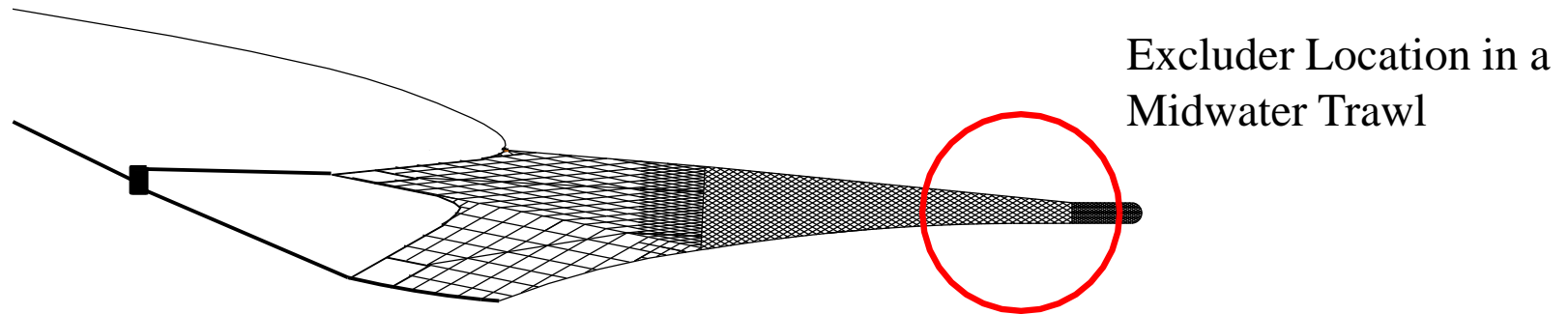
# Inshore SSIP Summary

- SSIP Program contains mechanisms that guarantees average bycatch will be at or below the Performance Standard level.
- The Inshore SSIP program provides incentives to keep inshore average annual bycatch amount for the Inshore Sector at or below ***21,750 Chinook salmon.***

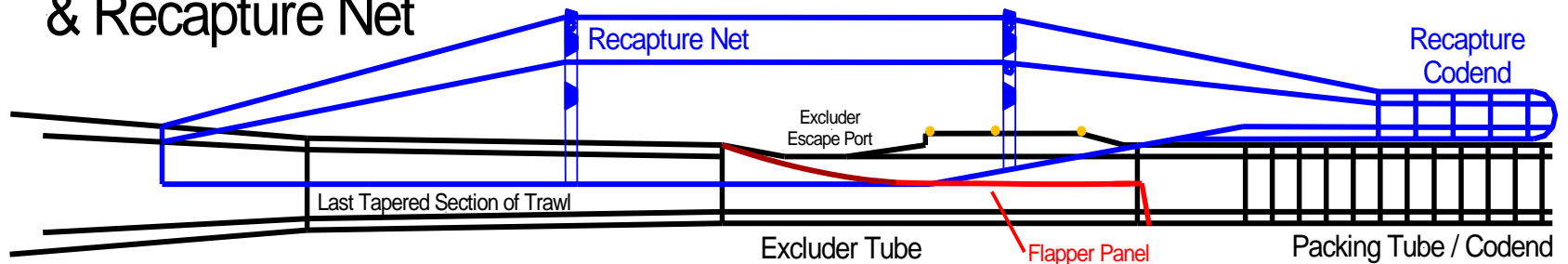
# Managing SSIP Data

- A secure web-accessed database that provides a consistent level of management by all inshore coops.
  - Provides up-to-date individual vessel, coop, and sector information
  - Allows each coop's manager to easily operate within the SSIP rules
  - Assures each coop that all coops are operating within the SSIP rules

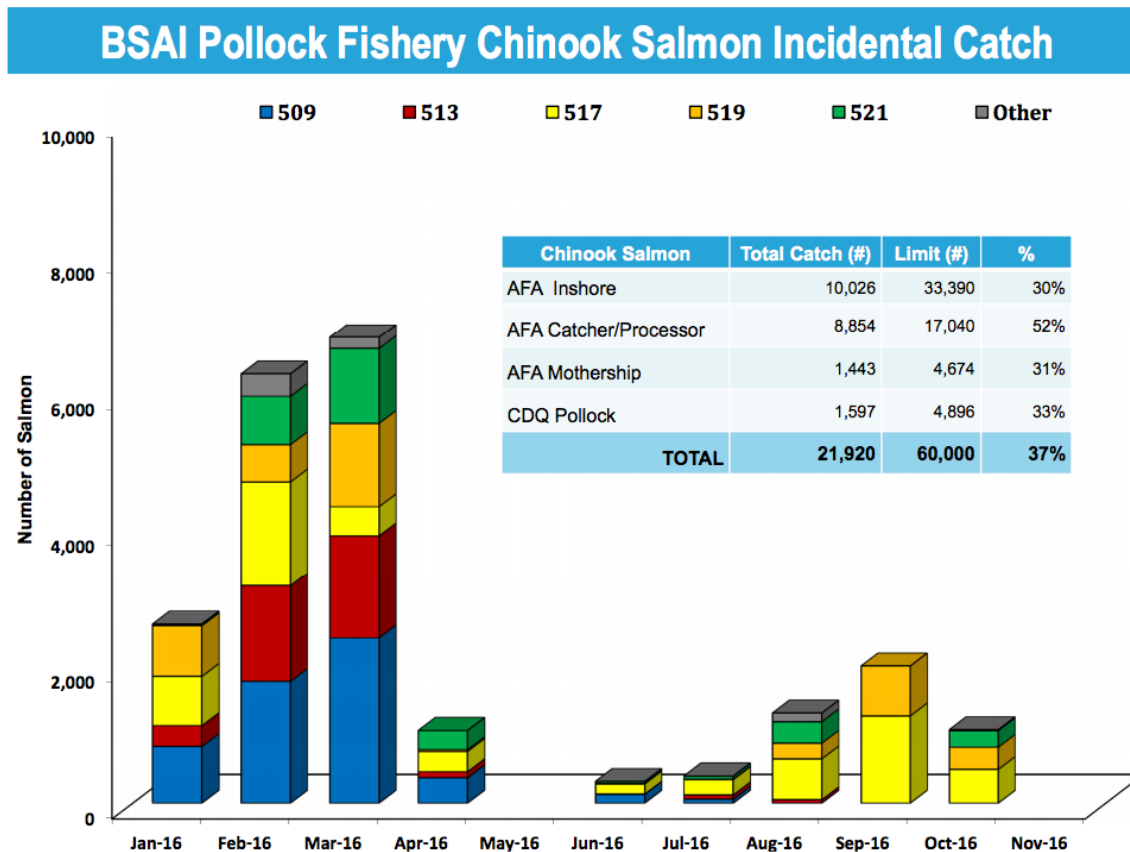
# Salmon Excluder



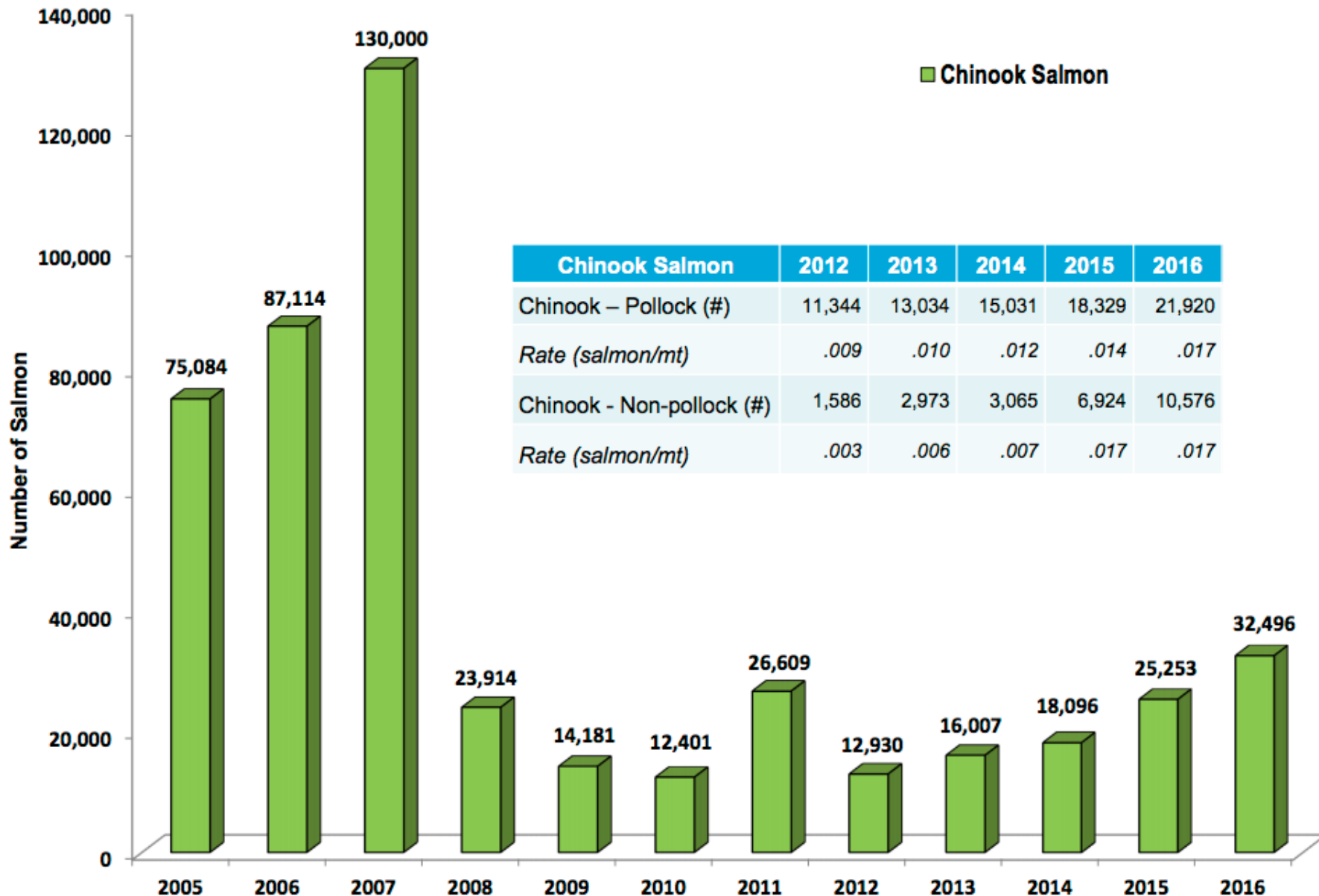
## 2010 A Season Excluder & Recapture Net



## Results of the Pollock CV Efforts to Minimize Chinook Salmon Bycatch (From NMFS Dec. 2016)



# BSAI Trawl Chinook Salmon Incidental Catch





*Thank you*

Brent Paine  
United Catcher Boats  
Seattle, WA