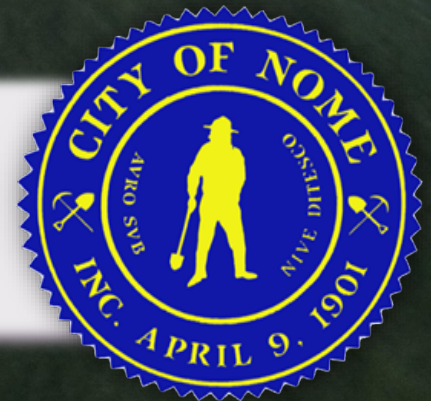




Expanding Arctic Maritime Capacity & Readiness

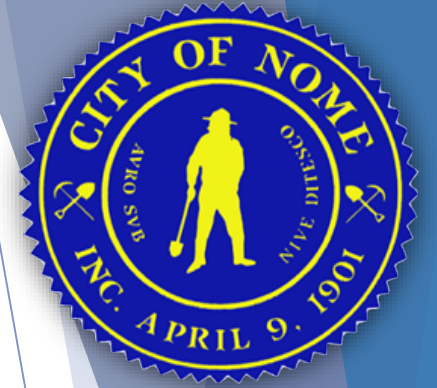
Alaska State Legislature House Arctic, Economic Development & Tourism Committee





City of Nome

- ▶ **First Class Municipal Government with 3,800 residents**
 - ▶ *Port & Harbor*
 - ▶ Police, Fire, & Local Emergency Planning
 - ▶ Public Works
 - ▶ Parks & Recreation with Swimming Pool & Rec Center
 - ▶ Kegoayah Kozga Public Library
 - ▶ Carrie M. McLain Memorial Museum in the Richard Foster Building with Kawerak Katirvik Cultural Center
 - ▶ Nome Public Schools | K-12 & Charter School
- ▶ **Regional Hub & Services**
 - ▶ Airport, Port, Roads & Telecommunications Infrastructure
 - ▶ Level 4 Trauma Center & Regional Hospital
 - ▶ Organization Headquarters
 - ▶ Sitnasuak Native Corporation, Kawerak, Bering Strait Native Corporation, UAF-Northwest Campus, Norton Sound Health Corporation, Bering Strait Regional Housing Authority & Norton Sound Economic Development Corporation



Sitnasuak Native Corporation (SNC)

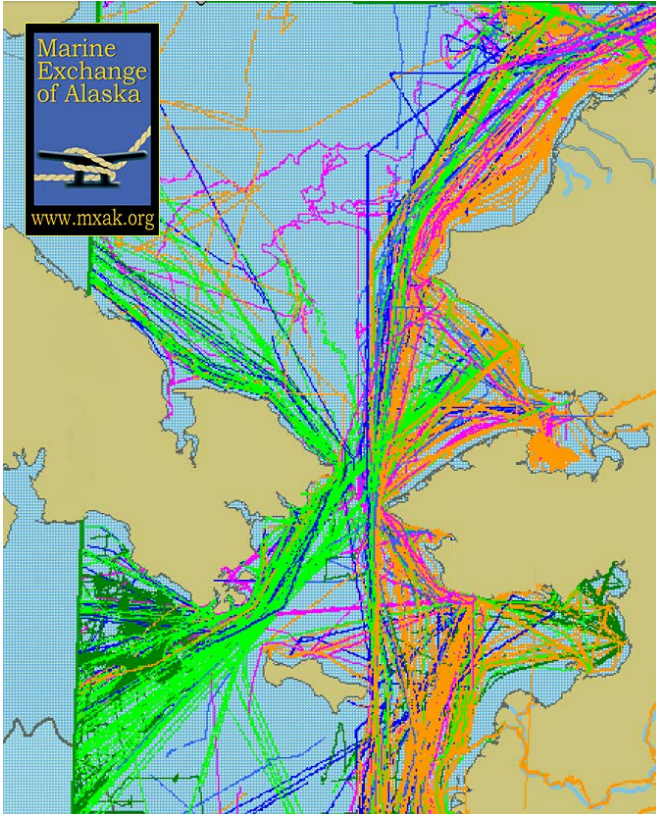


Mission: To Earn Profits on Operations While Protecting Our Land, Culture & Benefiting Shareholders

- ▶ Alaska Native Village Corporation created in 1971 under the Alaska Native Claims Settlement Act.
 - ▶ Today, SNC is one of the largest village corporations with 2,900 Alaska Native/Inuit shareholders.
 - ▶ SNC is headquartered in Nome with operations in Anchorage & Mat-Su, California, Virginia & Puerto Rico
- ▶ Private Investment at the Port of Nome with the *Franklin D. Okleasik, Sr. Facility*
 - ▶ Shored Based Bulk Fuel Storage (6 M Gallons) with Marine Re-Fueling via Pipeline & Truck Delivery



Changing Arctic & Marine Readiness



- ▶ **Global Climate Change**
 - ▶ Longer Ice-Free Seasons
 - ▶ Reduced Polar Cap & Opening Arctic Waters
- ▶ **Increased Vessel Traffic**
 - ▶ Northwest Passage Transits
 - ▶ Tourism & Cruise Ships
- ▶ **Arctic Resource & Economic Development**
 - ▶ Oil & Gas - Onshore & Offshore
 - ▶ Minerals, Rock/Gravel & Rare Earth Elements
 - ▶ Fisheries & Community Development Quota (CDQ)
 - ▶ Military Strategic Importance
- ▶ **Growing Alaska Communities**
 - ▶ Population Increases
 - ▶ Cost of Living & Community Sustainability

Tourism & Crystal Serenity

- ▶ Expansion of Cruise Tourism Market with Luxury Ships
- ▶ Summer 2016 | Crystal Serenity 32-day Journey through the Northwest Passage
 - ▶ 900 passengers & crew of 565
 - ▶ Seward, AK to New York City
 - ▶ Stop in Nome | August 20, 2016
 - ▶ Future Sailing in 2017 | Economic Opportunities
- ▶ Port of Nome infrastructure needs to be expanded for today's & future demands from tourism to national security

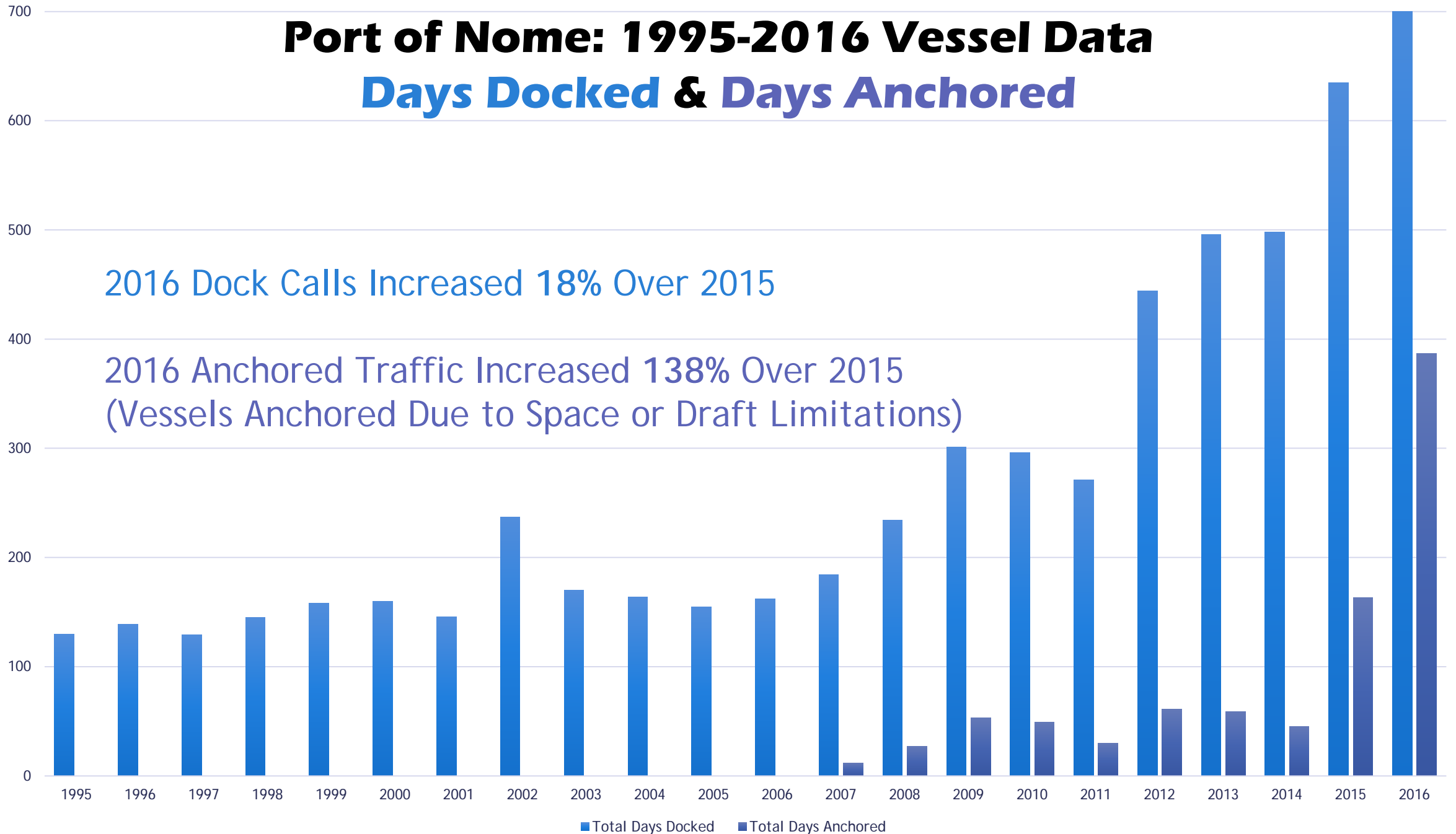


Port of Nome: 1995-2016 Vessel Data

Days Docked & Days Anchored

2016 Dock Calls Increased 18% Over 2015

2016 Anchored Traffic Increased 138% Over 2015
(Vessels Anchored Due to Space or Draft Limitations)





Preparation & Community Engagement

- ▶ Preparation to Work with Industry & Users
 - ▶ Communities: Barge, Fuel & Fisheries Vessels
 - ▶ Global Vessels & International Transits
 - ▶ Cruise Ship Operators
 - ▶ Resource Development Entities
 - ▶ Federal, US Military, Coast Guard & State Users
- ▶ Community Engagement
 - ▶ Input & Voice
 - ▶ Rural Lifestyles & Subsistence Resources
 - ▶ Economic Benefit & Sustainability

Port of Nome



March 2017

- ▶ 32-Years of Preparations, Operations & Community Engagement
- ▶ Community Investment, Capacity & Involvement
 - ▶ Current Depth of -22.5 feet (MLLW)
 - ▶ Port Director, Harbor Master & Port Commission
 - ▶ Multiple Users & Benefits as a Public Port
- ▶ Shore-Based Infrastructure & Services
 - ▶ Staging, Storage & Trans-shipment Options
 - ▶ Marine Refueling
 - ▶ Sewage Pump-Out & Solid Waste Handling
 - ▶ Potable Water
 - ▶ Resupply, Logistics & Community Services

Port of Nome – Infrastructure Growth

Year Completed	Project	Year Completed	Project
1925	Sheet Pile Jetty (Harbor Entrance Channel)	2006	East Breakwater
1951	Town Seawall Construction	2007	Small Boat Harbor South Dock (COE Improvements)
1985	Causeway (West Breakwater)	2008	Small Boat Harbor East Dock (COE Improvements)
1985	Industrial Pad	2008	Small Boat Harbor Low Level Dock
1988	Causeway Pipeline	2008	Inner Harbor Dredging (Deepen Basin)
1989	West Gold Dock	2008	Small Boat Harbor East Floating Dock
1991	City Dock	2012	Causeway High Mast Lights
1999	Small Boat Harbor Fish Dock	2013	Inner Harbor High Ramp Construction/Dredging
1999	Small Boat Harbor West Floating Dock	2013	New Snake River Bridge
2005	60-foot Concrete Barge/Launch Ramp	2015	Middle Dock
2005	Outer Harbor Dredging (Basin Expansion)	2016*	Nome Seawall Maintenance & Repair



Port of Nome

Examples of Ship Traffic & Demand at the Port of Nome

- ▶ NOAA Rainer & Fairweather Ships | West Gold Dock 2015
- ▶ Canadian Navy | City Dock 2015
- ▶ Dockwise Ship with Quintillion Vessels Aboard | Offshore Nome 2016



Served by Bonanza Fuel LLC for marine refueling & Nome Joint Utilities for Water-Electricity

Fiber Optic
Service in
late 2017
Quintillion

50 acres of uplands

Outer Harbor -22.5' MLLW

Inner Harbor -10' MLLW

Norton Sound
Seafood Center

Port Offices

Road Access to
Community & Services:
hotels, healthcare,
restaurants, grocery,
hardware supply,
City Police, State
Troopers & NPS-City-
Kawerak Visitor
Centers-Museums

Access to State DOT Airport &
Facilities with TSA & US Customs

**Today's Working Arctic Port - Public Access,
Capacity & Cost Effective to Enhance**

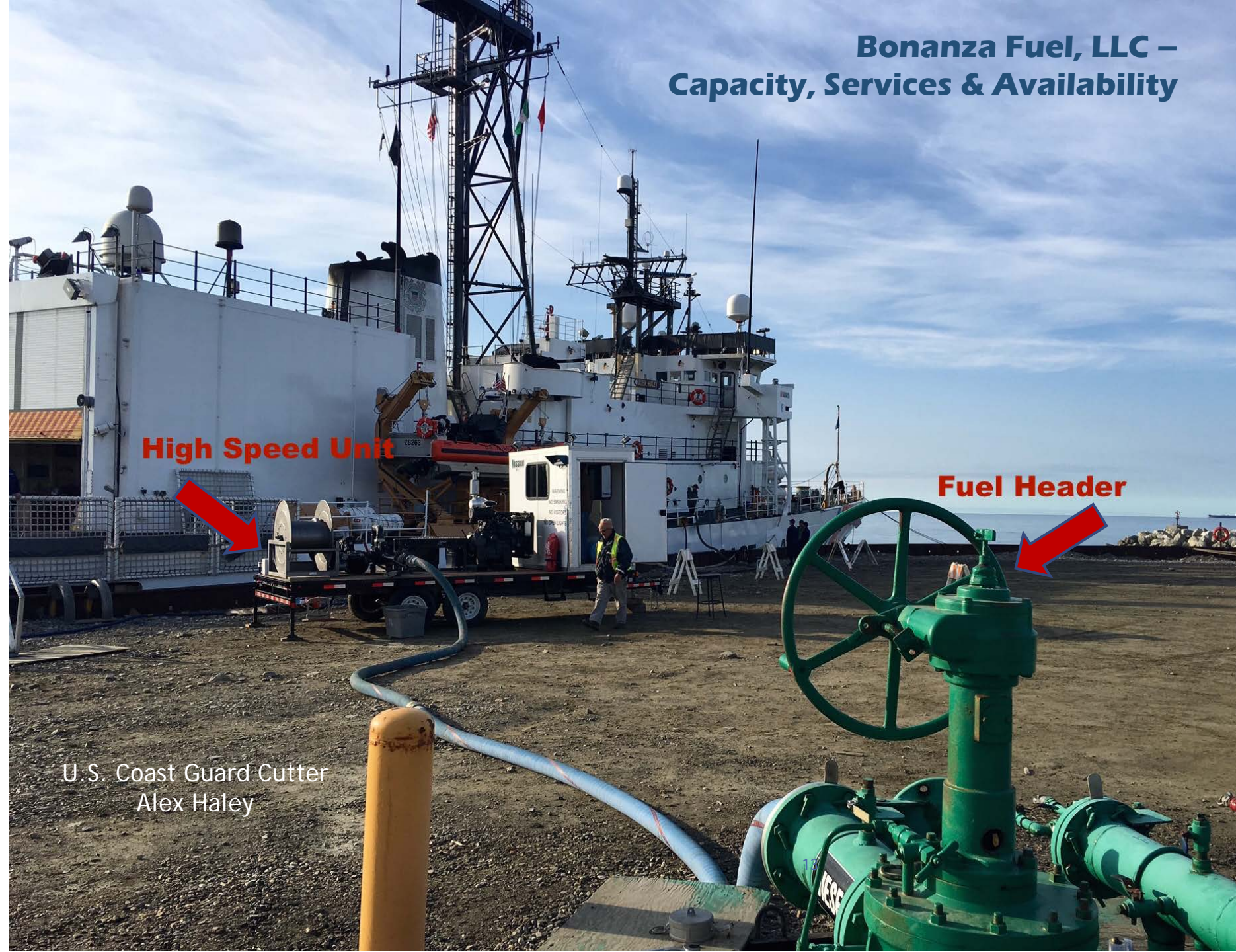
March 2017

Shore-Based Re-Fueling

- Safety & reduces environmental contamination in comparison to at sea transfers
- Capable of 500 gallons per minute via high volume marine refueling
- Allows for simultaneous delivery of potable water, and discharge of sewage & garbage
- Flexible in quantity & fuel type

March 2017

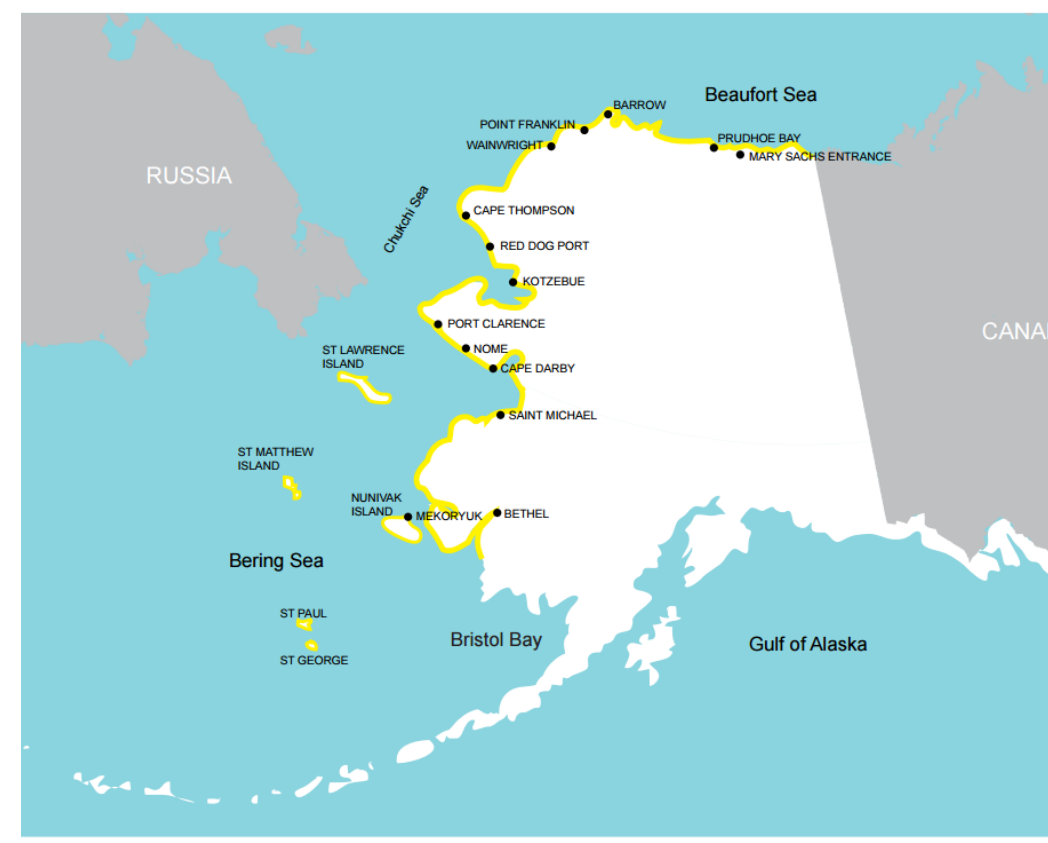
**Bonanza Fuel, LLC –
Capacity, Services & Availability**



Port of Nome & Deep-Draft Arctic Ports

- ▶ Nome selected by the USCOE as the most cost-effective for 1st investment in US Arctic Deep Draft Ports based on
 - ▶ Location & Port Proximity
 - ▶ Intermodal Connections
 - ▶ Uplands Support
 - ▶ Navigation Accessibility
 - ▶ Existing Marine & Community Infrastructure
- ▶ Initial Investment to Expand the Deep Draft Port Capacity at Nome supports a future network of viable Arctic Ports & Nome can share expertise

ALASKA DEEP-DRAFT ARCTIC PORT SYSTEM



Port of Nome

Deep-Draft Arctic Port Site Expansion



- 1) Construct Deep-Draft Dock to -36 feet according to the *Nome Port Strategic Development Plan*
 - ▶ Optimizing current infrastructure for a deep draft site
 - ▶ Extending existing causeway 2,250 feet
 - ▶ Providing cost effective & timely ability to accommodate ice breakers, cargo/fuel barges, fuel tankers, US Coast Guard & NOAA mission vessels
- 2) Dredge the Existing Outer Harbor to -28 feet
 - ▶ Potential for needed & additional dock configurations
- 3) Enhance Moorage, Utilities & Marine Waste Services
 - 1) Enhancing Moorage, Electrical & Communications Utilities
 - 2) Expanding Pipeline Infrastructure to Deep Draft Dock
 - 3) Expanding Marine Waste Reception Facilities



Port of Nome

Deep-Draft Arctic Port Site Expansion

- ▶ Opportunities
 - ▶ Utilize federal funding to encompass & realize all benefits for Arctic construction that incorporates new policy set by the federal WIIN & NDAA
 - ▶ Appropriately utilize private investment through P3 agreements for long-term preferential use or lease agreements, or operational control contracts



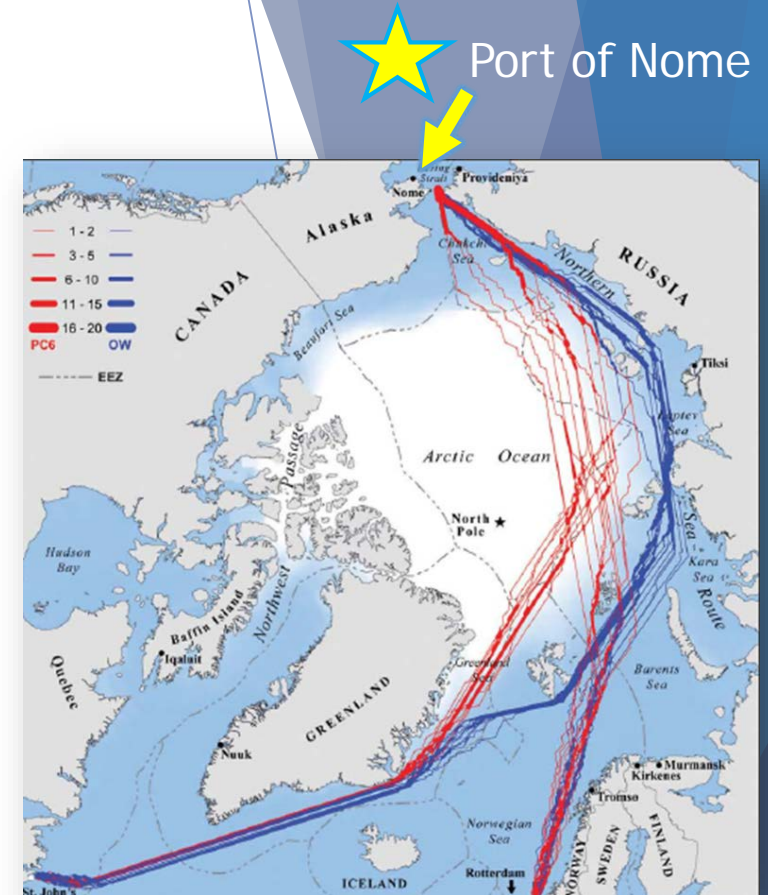


Rendering of an Expanded Port of Nome
Cost Effective & Timely Arctic Port Enhancements

Summary

Strategic, Cost Effective & Timely Arctic Port & Gateway

- ▶ Nome is strategically positioned for a National Gateway to the Arctic along the Northern Sea Route & access to the Bering Sea/Strait
- ▶ Port of Nome is a working Arctic port with *Capacity & Services*
 - ▶ Public port with 32-Years of Operation Experience
 - ▶ Multiple users & benefits with the Community, Region, State, Industry & Government
- ▶ Cost Effective & Timely to Expand



Changing Arctic | Preparations | Community Engagement
Regional Benefits & Infrastructure | Economic Development

Closing

Appreciate Your Support & Investment

City of Nome

PO Box 281 | Nome, AK 99762

(907) 443-6663 | www.nomealaska.org

Sitnasuak Native Corporation

PO Box 905 | Nome, AK 99762

(907) 387-1200 | www.snc.org

