



# **Kenai Peninsula Borough School District**

**Joint House and Senate Education Committee  
February 13, 2017**

**Penny Vadla, Vice-President, Board of Education  
Sean Dusek, Superintendent**



# KPBSD - 44 diverse schools

- Neighborhood Schools
- Homeschool program
- Village schools
- K-12 schools
- Russian Old Believer schools
- Charter schools
- Alternative schools
- Performance-Based school

**25,600 square miles**



# KPBSD Results

## Jumpstart

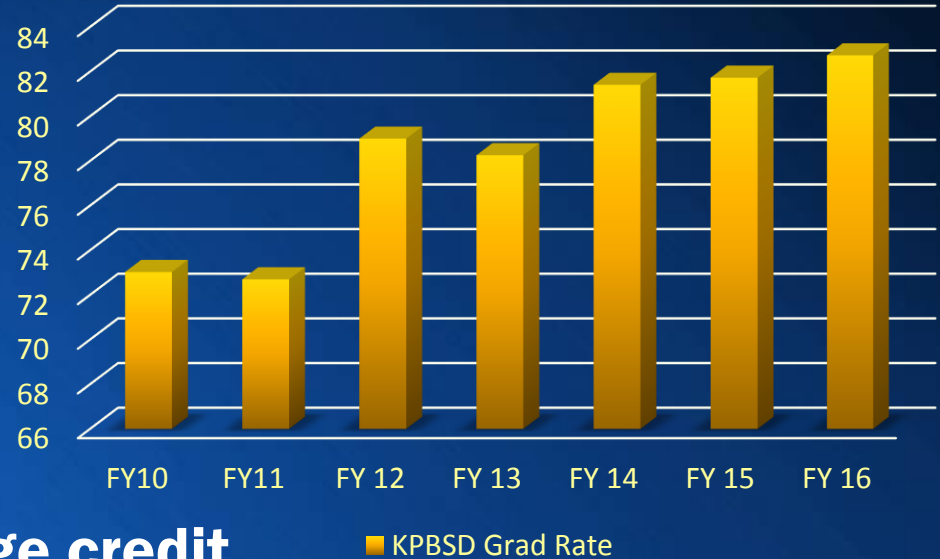
**20%** students earn college credit

**258** students completed **460** college courses at Kenai Peninsula College (KPC)

**239** students earned college tech prep credits

**419** Industry Certifications

## Graduation Rate



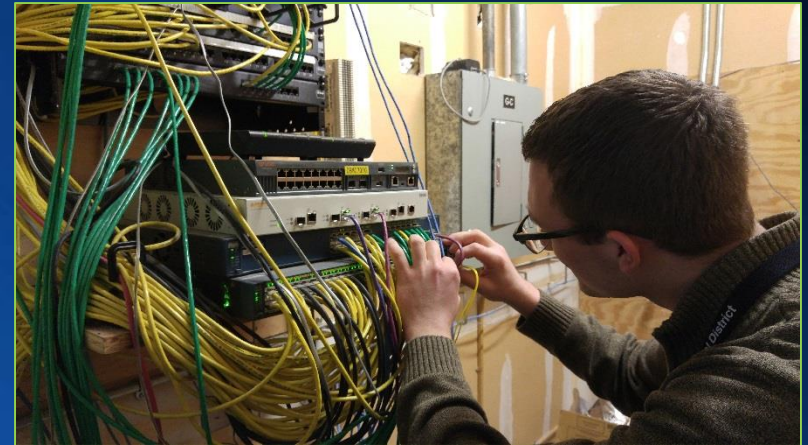
Hazwoper 40, NCCER,  
OSHA 10, EMT, CPR,  
Cook Inlet Training Standards



# Digital Technology Initiative - DTi

- **Distance Delivery**

- Digital parallel (Canvas)
- Personalization



- **Classroom Without Walls (CWOW)**

- **Partnerships**

- Bristol Bay and Cordova



# Innovations



# #AKlearns

- **ConnectED Initiative with Apple, Nanwalek and Port Graham schools**
- **DTi grant – Digital Teaching Initiative three year grant**
- **Hybrid High School in Seward**
- **Innovation with drones – partnerships with state agencies and local businesses**
- **Jumpstart and college dual-credit courses, UAA partnership**
- **Communications - timely response in critical situations, and #golden school news**
- **Effective leadership and calibration**
- **Effective instruction and collaboration**
- **Project Aware – behavioral and mental health awareness**
- **Project Search workplace immersion program for students with disabilities**
- **Career and Technical Education (CTE) Academies**
- **Project Grad – Kenai Peninsula Native Youth Leadership (KPNYL) – Native Education partnerships**
- **Caring for the Kenai – nationally recognized program incorporating service learning**

# KPBSD Efficiencies

- **Professional Development and Collaboration**

- Distance delivery

- **Operational reorganization**

- Warehouse, student nutrition, pools, district administration

- **Health care**

- High Deductible option
- Preferred provider
- Benefits review

- **Transportation**

- South Peninsula – single tier to double tier busing





# Challenges

## ● Uncertainty

- Education funding
- Alaska economy

## ● Social pressures

- Mental Health
- Substance Abuse

## ● Federal expectations interpreted by DEED and Legislature

- ESSA
- Assessments
- Future mandates





**www.KPBSD.org**