



Department of Natural Resources
Division of Agriculture
Overview for House Resources Committee
Franci Havemeister, Director
February 9, 2015

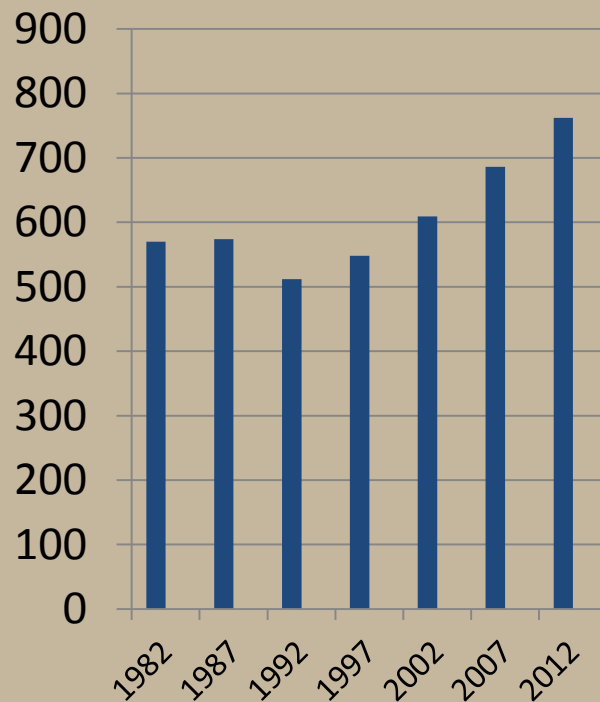




DIVISION OF AGRICULTURE -OVERVIEW-

Mission: To promote and encourage the development of an agriculture industry in the state.

Number of Alaskan Farms

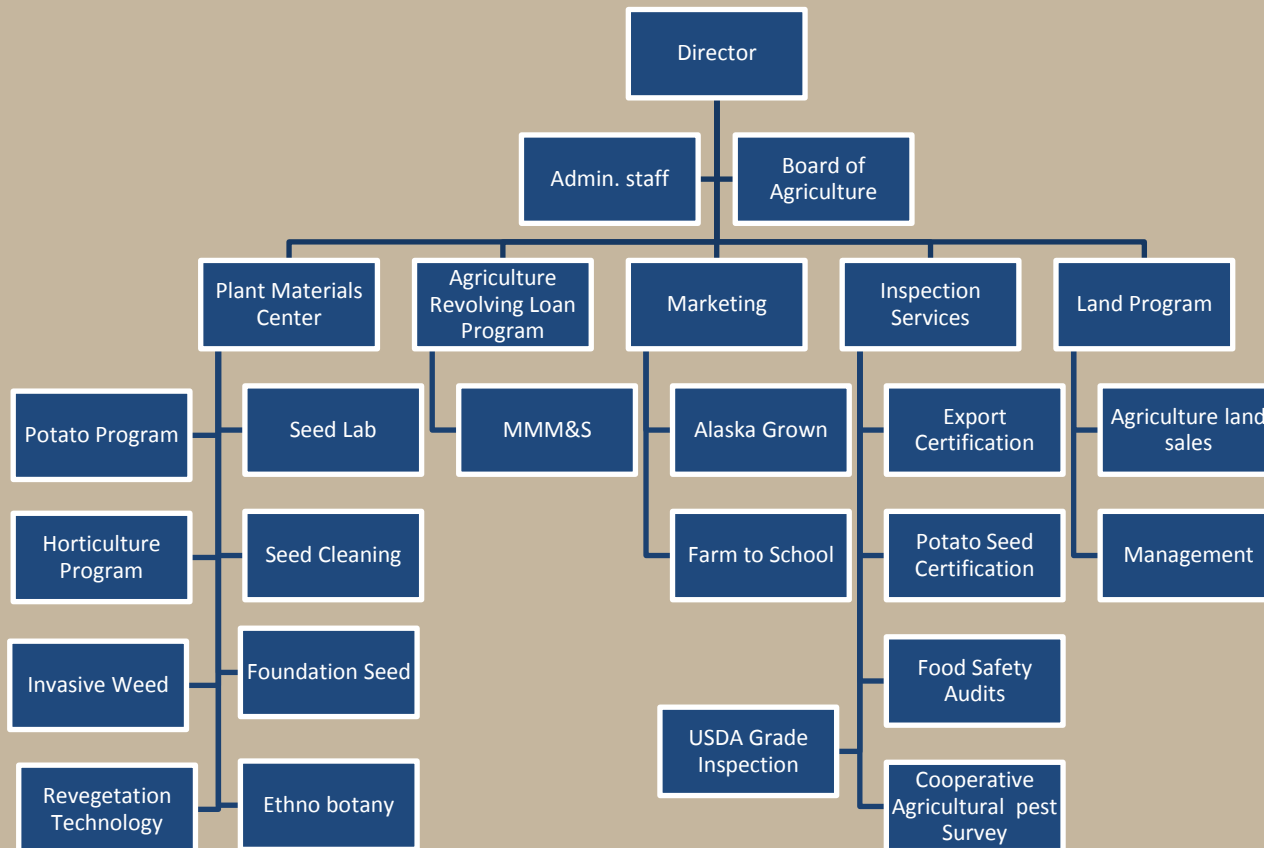


2012 Census of Agriculture



DIVISION OF AGRICULTURE -OVERVIEW-

Organizational Chart



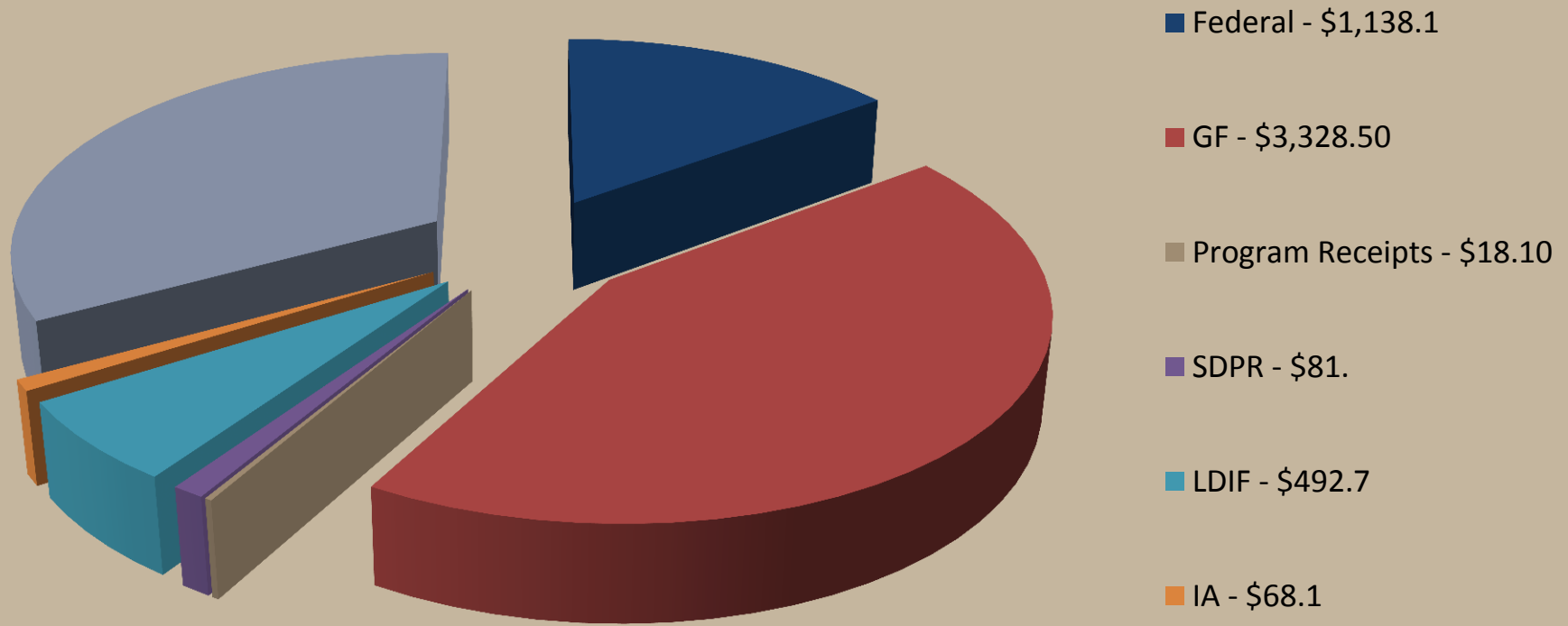


DIVISION OF AGRICULTURE -OVERVIEW-

Division of Agriculture Budget

FY15 Operating Budget: \$7.7 M

Employees: 35 FT/ 9 Seasonal





DIVISION OF AGRICULTURE

-OVERVIEW-

Plant Materials Center

405 Acre Production Farm



- **Certified Seed Potato Program**
- **Horticulture Program**
- **Foundation Seed Program**
- **Certified Seed Laboratory**
- **Native Plant Evaluation**
- **Invasive Species Program**
- **Revegetation Technology / Design**
- **Conservation Plant Technology**
- **Seed Cleaning and Conditioning**
- **Ethno botany Teaching Garden**



DIVISION OF AGRICULTURE -OVERVIEW-

Plant Materials Center

Certified Seed Potato Program

- Program is Industry requested and driven
- Assures pathogen-tested seed is available to certified seed growers
- Planting seed of known quality is essential in potato production
- Seed is multiplied by certified seed growers and then sold to table stock producers or retail outlets
- Provides technical assistance to industry on virus and disease issues



Horticulture Program

- Industry requested and driven
- Variety trials determine most suitable varieties
- PMC provides expertise on crop selection, production, & cultivation

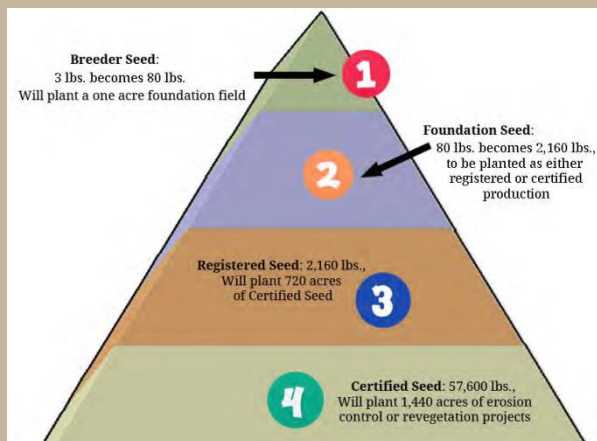


DIVISION OF AGRICULTURE -OVERVIEW-

Plant Materials Center

Foundation Seed Program

- PMC produces high quality seed suitable for Alaska's climate
- Seed must meet high standards of pedigree retention, varietal purity and viability
- Producers purchase for cultivar seed production



Seed Analysis Laboratory

- Only AOSA Certified lab in Alaska
- Conducts seed analysis for growers, state and federal agencies
- Testing conducted in accordance with the Association of Official Seed Analysts (AOSA) standard



DIVISION OF AGRICULTURE -OVERVIEW-

Plant Materials Center

Native Plant Evaluation

- PMC maintains a program to develop accessions and cultivars
- Native species are already well adapted to the Alaska's extreme climate
- Steady demand for seed stock for revegetation and reclamation purposes.



Kanuti pit
materials site
8/2011 & 8/2012



Revegetation Technology and Design

- PMC provides recommendations to agencies in the design of reclamation and revegetation projects
- Use of native plants is encouraged



DIVISION OF AGRICULTURE -OVERVIEW-

Plant Materials Center

Seed Cleaning

- Seed cleaning is the separation by physical characteristics of seed
- Critical step in producing high-quality seed
- Cleans seed from PMC, Alaska Seed Growers Association, private companies and both state and federal agencies.



Ethno botany Teaching Garden

- Teaches local identification of native and invasive plants,
- Ecology, biology, and taxonomy of native plants
- Hands-on experience in harvesting and gathering ethics
- Cultural plant names and language translation
- Open to the public during business hours



DIVISION OF AGRICULTURE -OVERVIEW-

Plant Materials Center

Invasive Species Program

- Coordinates with state and federal agencies, private sector, quasi state, and public entities to develop management programs pertaining to invasive plants and agricultural pests.
- Extensive outreach and education
- Division quarantined 5 aquatic invasive species to stop any further introduction
- Cooperated with USFWS, Kenai Borough, Kenai Cooperative weed management Association on eradication efforts of three lakes - Stormy, Beck & Daniels.



Training, Outreach & Publications

- Staff participate in industry conferences
- Publications are distributed and listed on the PMC website
- Technical expertise is available to industry
- PMC is a web conference hosting facility



DIVISION OF AGRICULTURE -OVERVIEW-

Agricultural Revolving Loan Fund

Statutorily established in AS 03.10.010

Promotes the more rapid development of agriculture as an industry throughout the State by means of long-term, low-interest loans.

FY14 Financial Reports

- Fundy Equity - \$22.6 M
- Cash available - \$7.5 M
- Current earnings - \$203,629
- 15 loans approved - \$1.5 M
- Current Default Rate – 2.98%
- 83 borrowers located throughout the state
- Celebrated 61 years of continued service to Alaskans

Mt. McKinley Meat & Sausage

- \$42,488 profit

Types of Available Loans



Short Term – *for annual operating expenses (fertilizer, etc.)*

Chattel – *for purchase of equipment or livestock*

Farm Development – *purchase of real property for agricultural use*

Irrigation – *system purchase and installation*

Product Processing – *to build and equip facilities for the processing of Alaskan agricultural products*

Clearing – *for agriculture land clearing*



DIVISION OF AGRICULTURE

-OVERVIEW-

Marketing

Alaska Grown Program

- Program launched in 1985
- Most recognized Logo in the state
- Added 84 new farms to the program
- Successfully implemented the Restaurant Rewards and Chef at the Market Programs
- Partnered with H&SSS to increase the number of markets accepting Electronic Benefit Transfer Program
- Published the 2014/2014 Alaska Grown Source Book
- Partner with agency and non-profit groups on marketing efforts
- Utilizes Social Media



Farm To School (FTS)

- FTS received the Alaska Community Service Award for Health
- School gardens have increased 11% over the past year
- 75% of schools report involvements with FTS
- 100% of schools have received FTS education material
- 100% of school districts indicated they have served a form of local food
- Created the Alaska Grown Produce Availability Chart focused on a school year
- Hosted multiple school kitchen tours for farmers to meet school kitchen staff
- Hosted the Farm to School Conference in January, connecting Nutritional service directors with farmers
- Alaska's FTS program is recognized nationally for its outreach and school district involvement



DIVISION OF AGRICULTURE -OVERVIEW-

Inspection Services

Export Certification

- Conducted inspections and issued phytosanitary certificates on over \$118 million dollars of Alaska Timber and agriculture products bound for export
- Continue to work with industry to assure all statutory, federal and international inspection requirements are met.

Potato Seed Certification

- Conducts field inspections to assure seed entered for certification meets disease tolerance levels
- Conducts bin and storage inspections
- Issues certified seed tags on product that has met certification standards



Food Safety Audits

- Created the School Garden Food Safety Guidelines
- Conducted 9 on Farm Food Safety Audits

Cooperative Agricultural Pest Survey (CAPS)



- Increased surveillance of plant pests
- Implemented USDA plant protection projects

USDA Grade Inspection and Certification

- Conduct inspections to assure quality and grade are met



DIVISION OF AGRICULTURE -OVERVIEW-

Agriculture Land Program

Agriculture Land Sales

- Works cooperatively with ML&W on area plans designating areas with suitable soils for agriculture
- Sold 100 Acres of agriculture land in 2014
- Preparing for sale of 560 acres of agriculture land in FY16



Agriculture Land Management

- Provided technical assistance with 7 State Farm Conservation Plans
- Assisted with three grazing management plans
- Conducted clearing requirement inspections
- Works closely with the local Soil and Water Conservation Districts on agriculture issues
- Provides assistance to agriculture land owners
- Researched potential areas for an agriculture permit



DIVISION OF AGRICULTURE -OVERVIEW-

Industry Support



Education & Outreach

The Division partners with educators, agencies, and the private sector, to promote knowledge transfer within the industry.

Support youth agriculture education programs:

- Agriculture in the Classroom
- FFA
- 4-H
- Teacher Education
- Youth education events





DIVISION OF AGRICULTURE

-OVERVIEW-

Questions?

