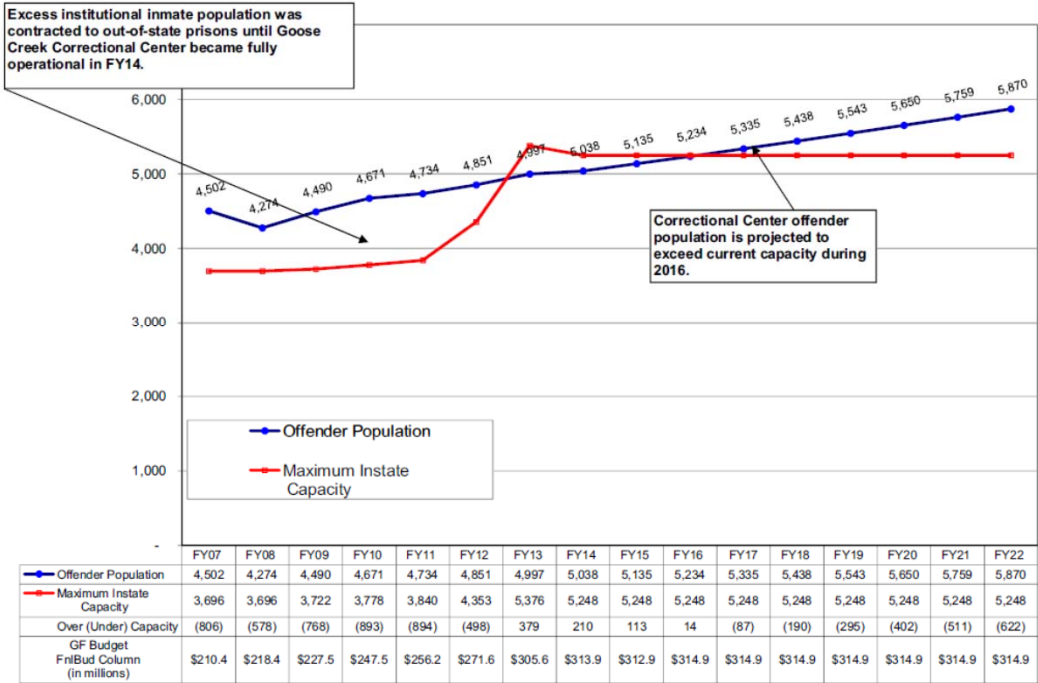


Senate Bill 91

OMNIBUS CRIME/CORRECTIONS BILL



Alaska Institutional Inmate Population FY07-FY22



*FY16-FY22 budget projections assume FY16 Adjusted Base amount with no increases.

101% Capacity

Goose Creek Correctional Center
\$250 Million + \$50 Million Annually
Opened in 2012

DOC has again reached 101% capacity.

Prison population grows at 3% a year.
(4x faster than Alaska's growth)

Alaska is at a crossroads. We must either:

1. Build a new prison;
2. Send inmates out of state; or
3. Target the drivers of prison population growth.

Factors Driving Prison Growth

1. Non-violent population
2. Pretrial population
3. Increased average length of stay
4. Probation violations

Policies

Electronic Monitoring

Pretrial E.M.

E.M for DV offenders
Good Time E.M.

Probation/Parole

Good Time for Probation
Administrative Sanctions
Probation Caps
Technical Violation Caps
Good Time on Parole

Misc.

Protective Orders
Police Training Surcharge
Community Work Service
Increased Judicial Discretion

Driving

License Revocations
Limited Licenses

Non-Violent Population/Recidivism

Earned Credit

Re-Entry

Food Stamps
Re-Entry Program

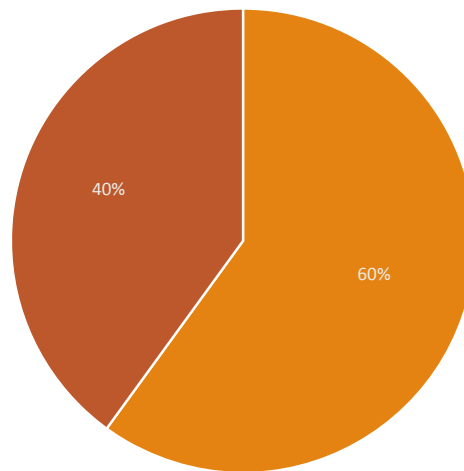
Driving Reforms

1. Administrative License Revocations
2. Limited Licenses

Pre-Trial Population

40% of the prison population is pretrial.

Sentenced vs. Unsented



■ Sentenced ■ Unsented

Pre-Trial Population

40% of the prison population is pretrial.

Unsentenced Offender Counts and Time Spent

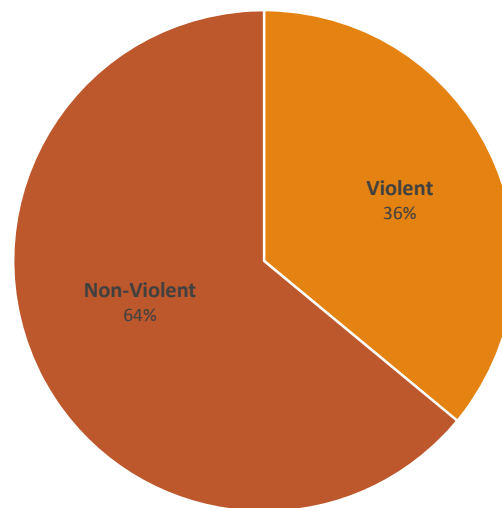
Felony Offense Class	Unsentenced Offenders	Unsentenced Days
Alcohol	45	93
Drugs	134	120
Probation/Parole	352	59
Person	435	205
Property	206	107
Sex Offense	167	296
Weapons	23	120

Other Electronic Monitoring Reforms

1. Good Time on Electronic Monitoring
2. Expanding Electronic Monitoring to Domestic Violence Offenders

Non-violent offenders are filling Alaska's expensive hard prison beds.

Violent vs. Non-Violent



Probation/Parole Reforms

1. Good Time on Probation/Parole
2. Cap on Technical Violation Jail Terms
3. Administrative Sanctions by DOC

Re-Entry

1. Food Stamps
2. Re-Entry Program

Miscellaneous Reforms

1. Expanded Mitigating Factor
2. Community Work Service Reform
3. Protective Orders (Petitioner Contacting Respondent)
4. Police Training Surcharge