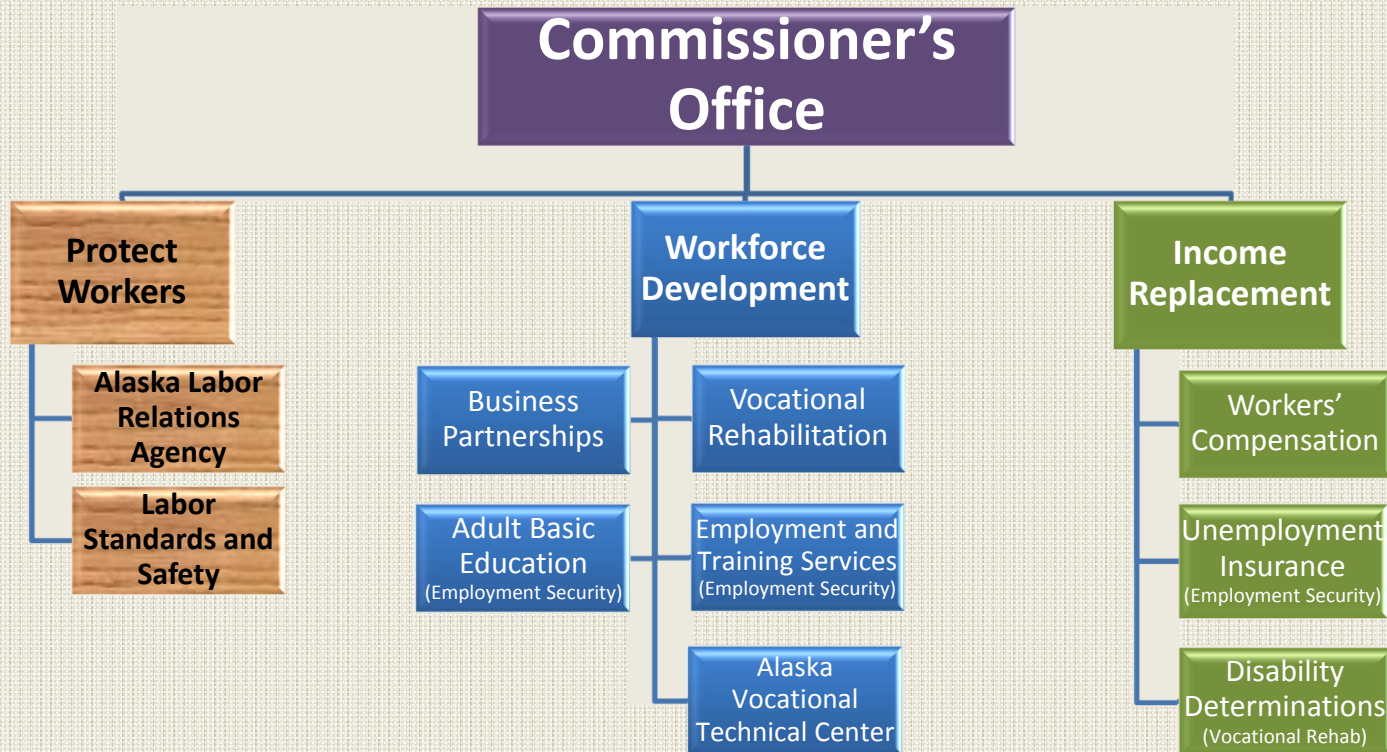


Alaska Department of Labor and Workforce Development

**House Finance Subcommittee
Federal Programs
Commissioner Heidi Drygas
February 5, 2015**



Organization Chart



Department Oversight

Workforce Development

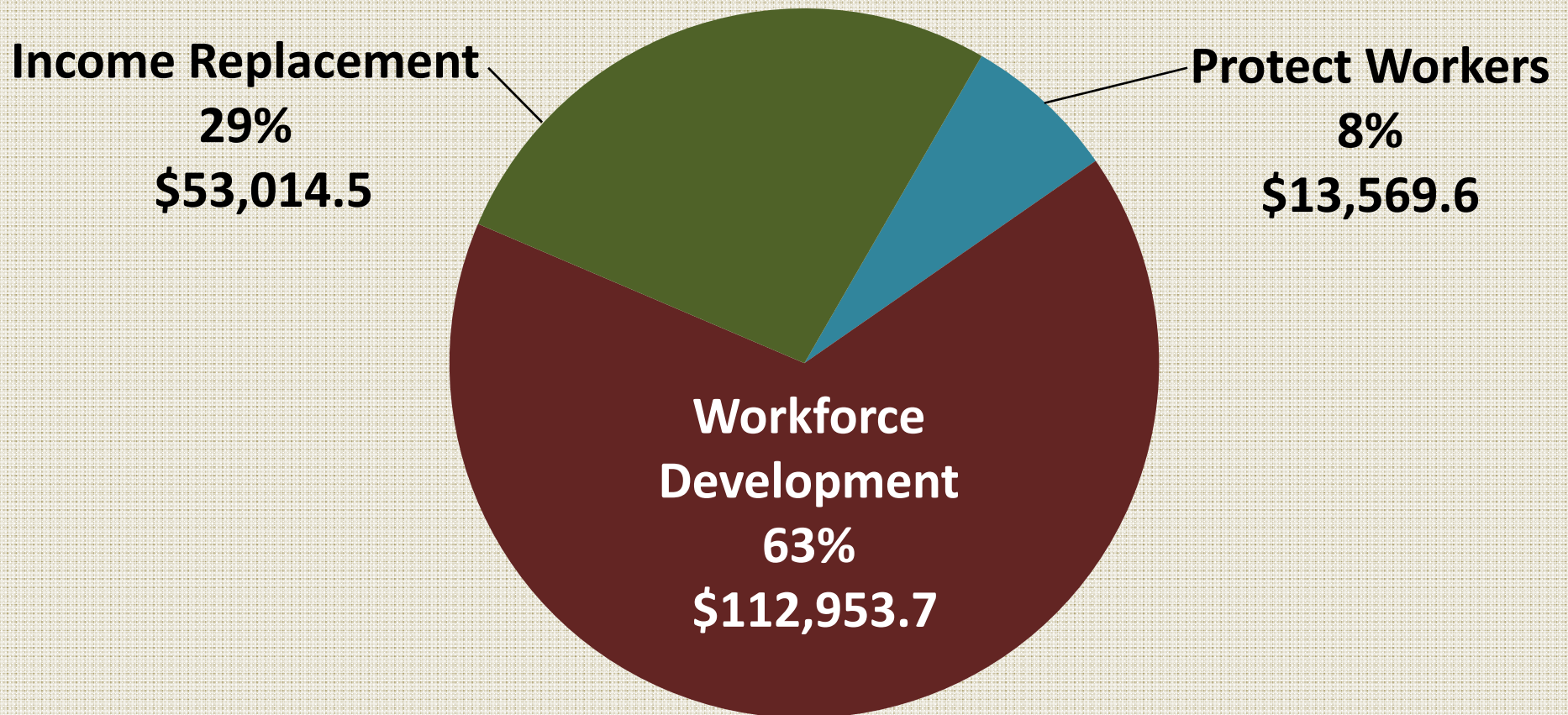
Protect Workers

Income Replacement

FY2016 Budget Request: \$179,537.8

UGF: \$29,169.9
DGF: \$35,275.5
Other: \$20,705.8
Federal: \$94,386.6

Budget by Priority Program



- 774 Full-Time Positions
- 71 Part-Time Positions
- 8 Temporary Positions

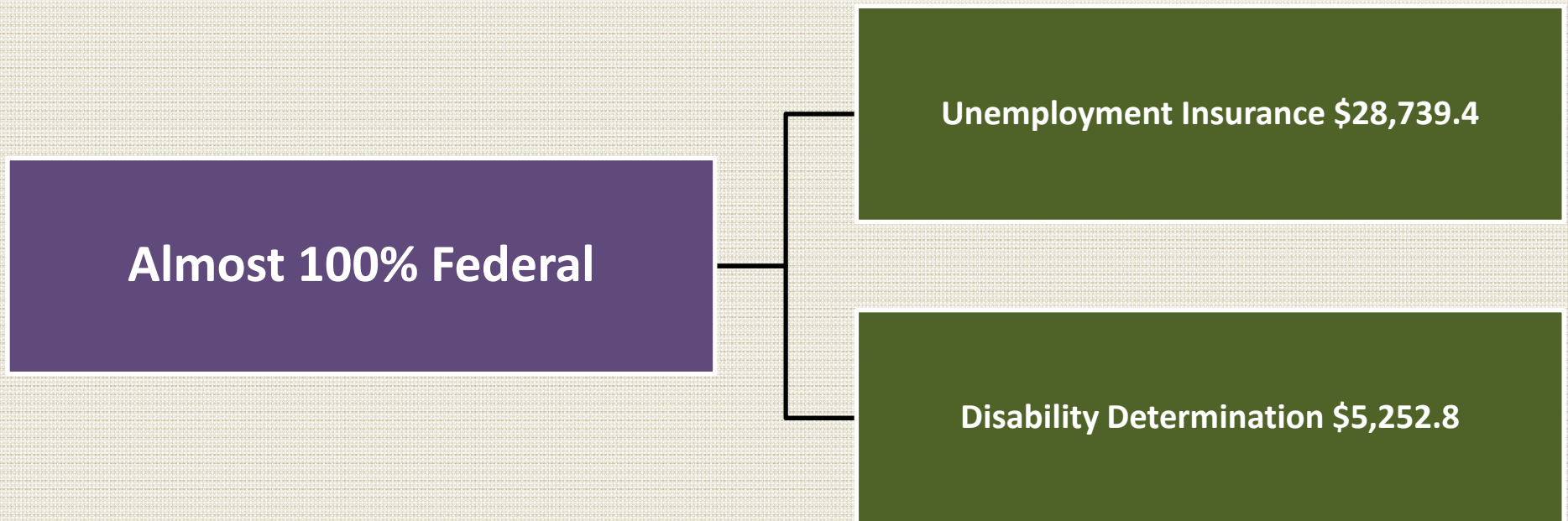
State Only Programs

Programs with no federal funds:

- Commissioner's Office
- Alaska Labor Relations Agency
- Workers' Compensation Division
- Wage and Hour Administration
- Mechanical Inspection
- Alaska Safety Advisory Council
- Workforce Investment Board
- Construction Academy
- Operations Grants to Regional Training Centers
- Alaska Vocational Technical Center

UGF:	\$12,668.3
DGF:	\$23,963.6
Other:	\$6,686.9
Federal:	\$1,258.2

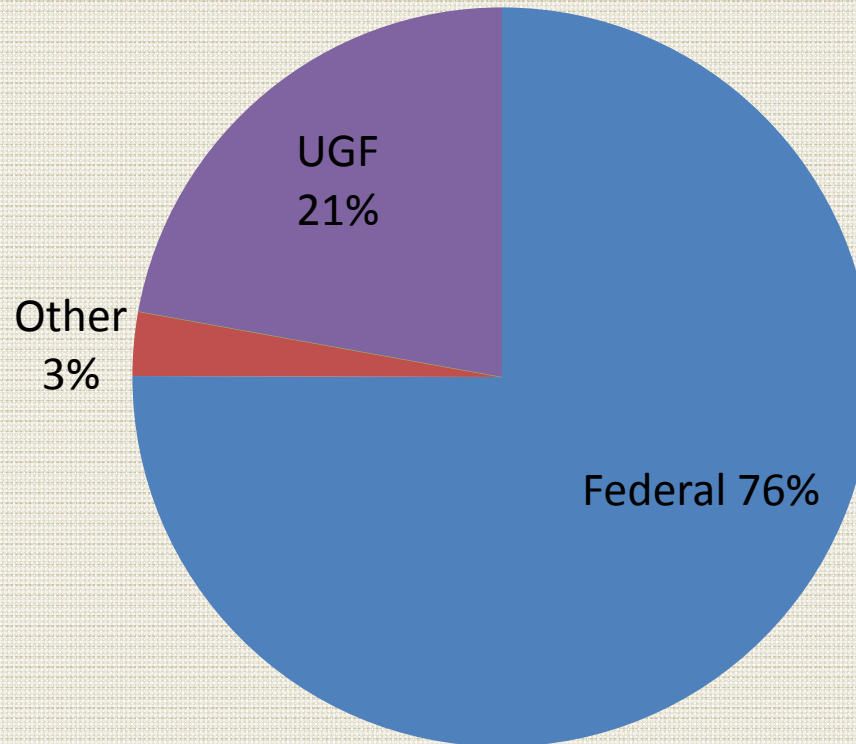
Almost 100% Federal Programs



Income Replacement

Vocational Rehabilitation: \$26,779.2

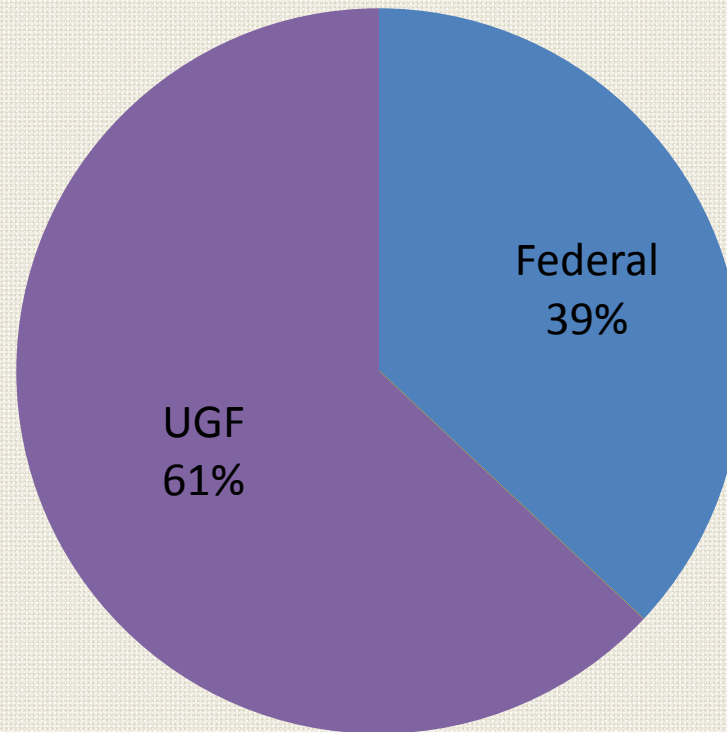
UGF:	\$5,548.1
DGF:	\$125.0
Other:	\$758.8
Federal:	\$20,347.3



122 Full-Time Positions 1 Temporary Position

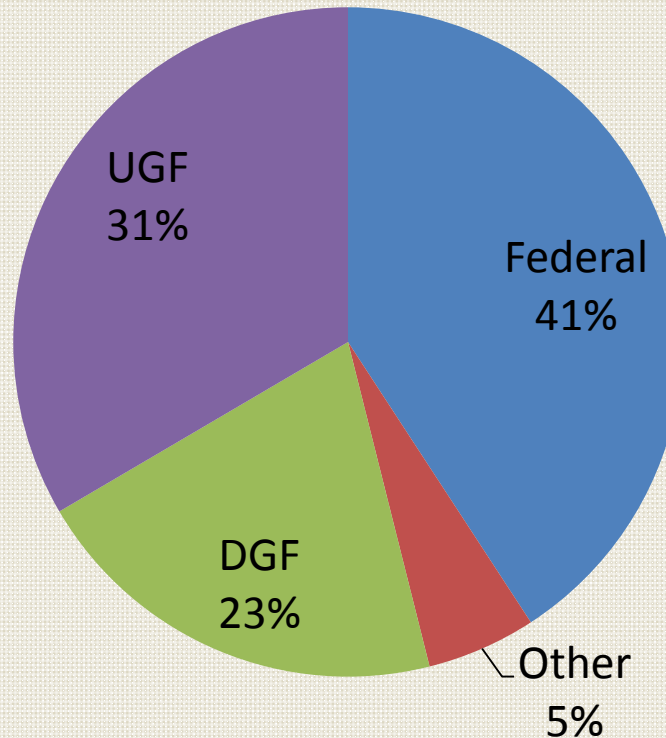
Adult Basic Education: \$3,412.2

UGF: \$1,983.8
Federal: \$1,263.4



3 Full-Time Positions

Occupational Safety and Health: \$5,954.3

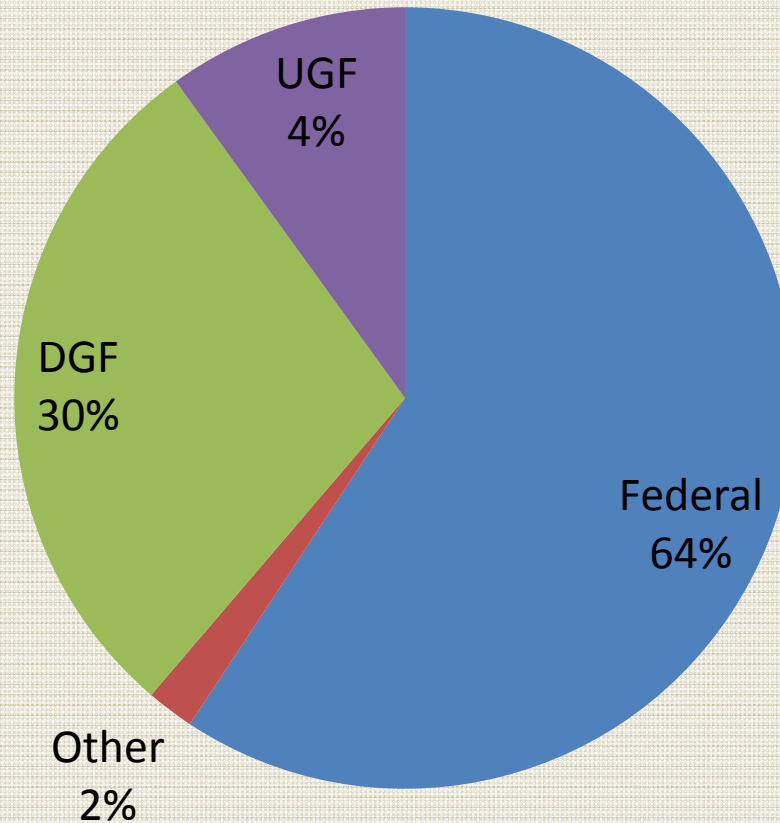


UGF:	\$1,827.8
DGF:	\$1,378.0
Other:	\$314.9
Federal:	\$2,433.6

38 Full-Time Positions

Business Services: \$26,451.3

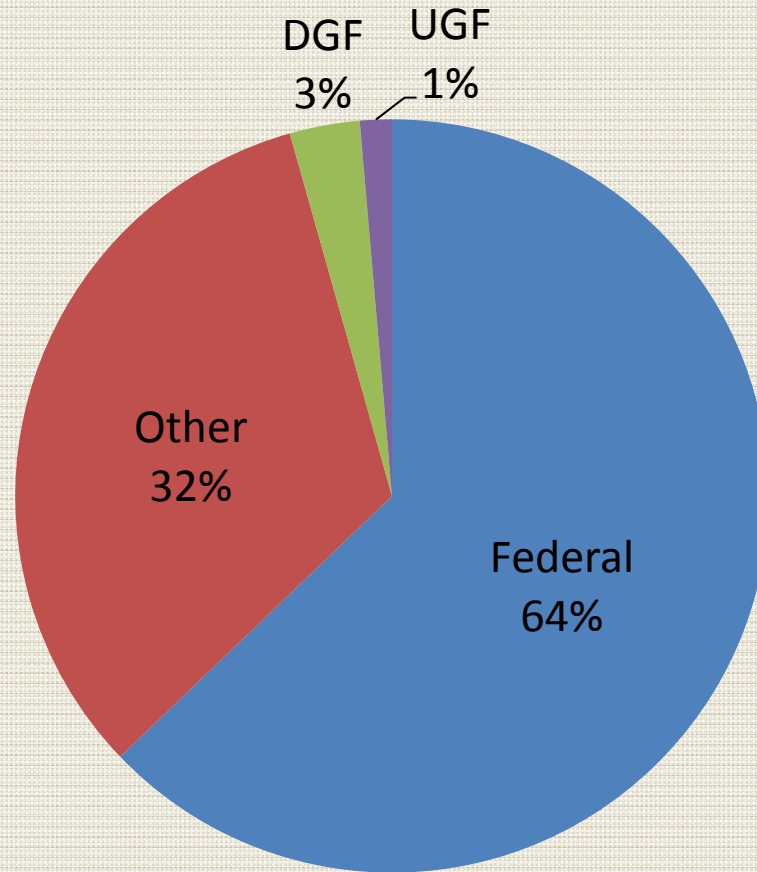
UGF:	\$1,081.6
DGF:	\$8,022.1
Other:	\$511.9
Federal:	\$16,835.7



25 Full-Time Positions

0 Temporary Positions

Employment and Training Services: \$23,484.0



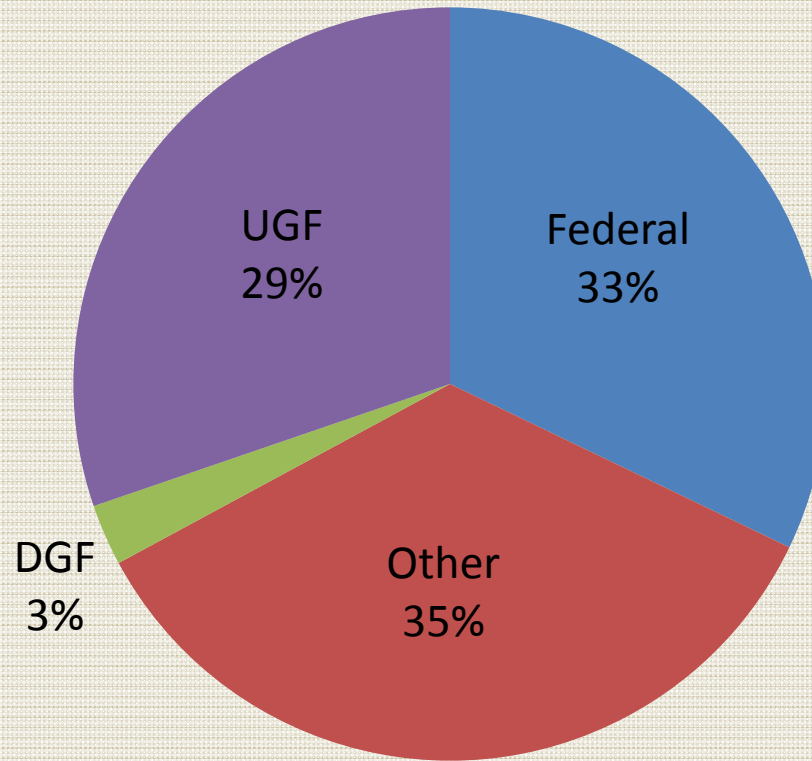
UGF:	\$331.6
DGF:	\$789.5
Other:	\$7,372.7
Federal:	\$14,981.2

138 Full-Time Positions

0 Temporary Positions

Research and Analysis: \$4,785.2

UGF:	\$1,368.0
DGF:	\$127.3
Other:	\$1,710.7
Federal:	\$1,579.2



36 Full-Time Positions

1 Temporary Position

For More Information Please Contact

**Commissioner Heidi Drygas
PO Box 111149
Juneau, AK 99811-1149
Phone: 465-2700**