



**AT-SEA PROCESSORS ASSOCIATION**

Partners for Healthy Fisheries

# House Special Committee on Fisheries

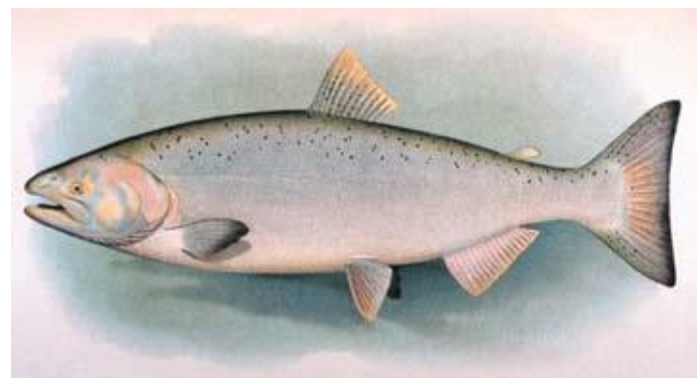
**Reducing Chinook Salmon Bycatch in the Bering Sea**

March 24, 2015

Stephanie Madsen, Executive Director  
Juneau, Alaska

# Presentation Outline

- ▶ Who we are
  - At-sea Processors/Pollock Conservation Cooperative
- ▶ Brief overview of Amendment 91
  - Incentive Plan Agreements
- ▶ How the CP fleet is reducing its Chinook bycatch
  - Avoiding hotspots
  - Effect of vessel-level incentives
  - Use of salmon excluders
  - Communication
- ▶ \*New\* 2015 IPA program
  - Required use of excluders
  - Additional vessel performance indicator



# At-sea Processors Association - Who are we?





# Alaska Pollock



# IPA Required Components

1. Incentive(s) that ensure operator of each vessel will avoid Chinook salmon at all times while fishing for pollock in the BS.
2. Rewards for avoiding Chinook salmon, penalties for failure to avoid Chinook salmon at vessel level, or both.
3. Incentive measures to promote reductions in a vessel bycatch rates relative to what would have occurred in absence of the IPA.
4. A description how incentive measures promote savings in any condition of pollock or Chinook salmon abundance in a manner that is expected to influence decisions by vessel operators to avoid Chinook salmon bycatch.



# IPA Required Components

5. How the IPA ensures operator of each vessel will manage bycatch to remain below the sector performance standard.
6. Annual reports are due April 1<sup>st</sup>
  - \* comprehensive description of incentive measures
  - \* description of how measures affected individual vessels
  - \* evaluation of whether measures were effective in achieving salmon savings beyond the levels that would have been achieved in the absence of the measures.
  - \* description and rationale of any amendments to the terms of the IPA.
7. Minimum participation
  - \* must represent at least 9% pollock quota
  - \* at least two unaffiliated AFA companies or CDQ groups.



# Amendment 91 Limits

Inshore

Mothership

CDQ

CP

PCC

HSCC

OP

Performance Standard Limit		60,000 limit
Inshore		33,390
Mothership		4,674
CDQ		4,896
CP		17,040
A season		13,818
B season		3,222



# Primary IPA components

- ▶ Data gathering, monitoring, reporting, information sharing.
- ▶ Identification of bycatch avoidance areas.
- ▶ Fishing area prohibitions for vessels with poor bycatch performance.
- ▶ A-season closed area.
- ▶ Conditional B-season closed areas.





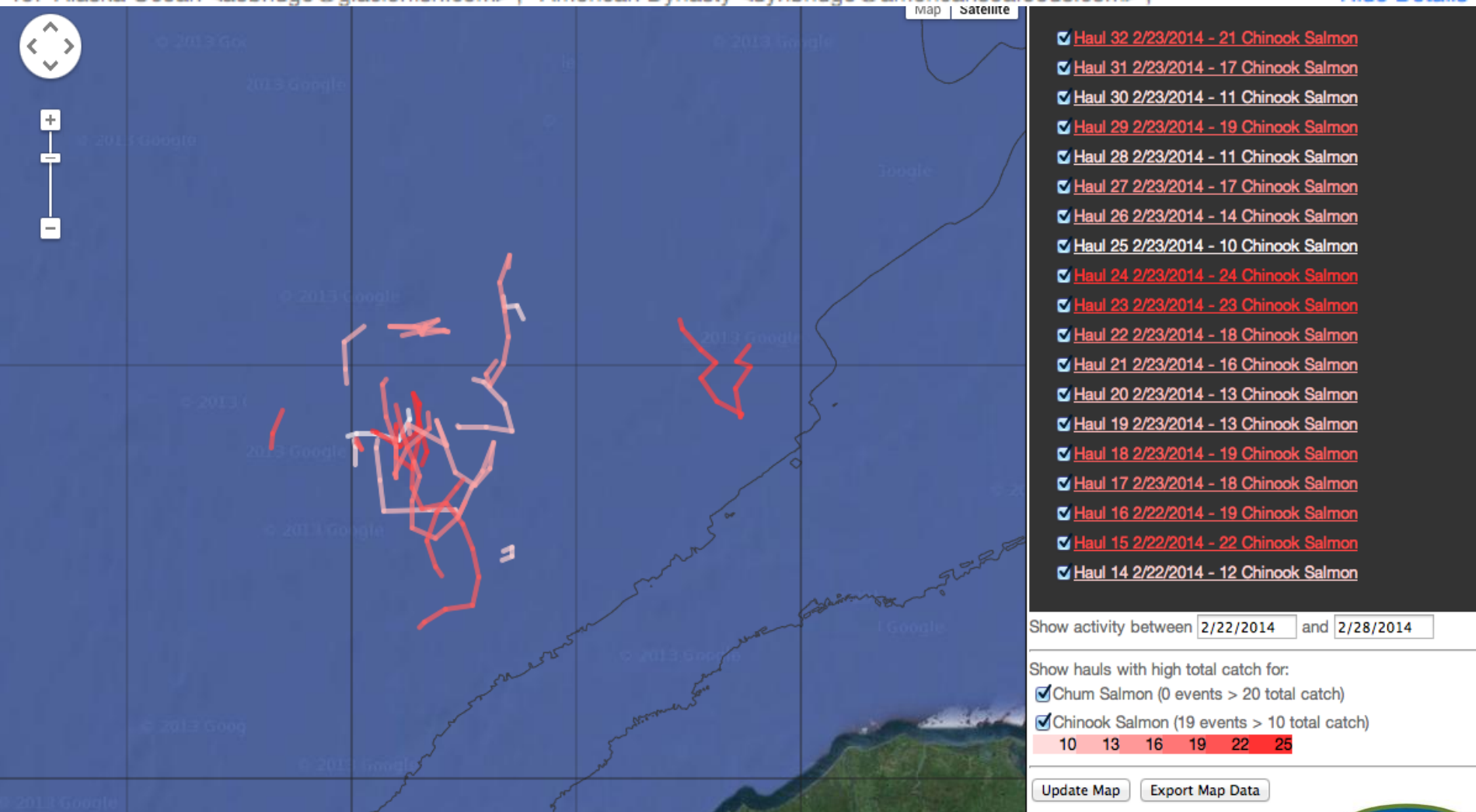
# CP IPA results—alarms and real-time trawl tracks. New for 2014

Karl Haflinger <karl@seastateinc.com>

March 24, 2014 10:25 AM

To: Alaska Ocean <aobridge@glacierfish.com>, American Dynasty <dynbridge@americanseafoods.com>

[Hide Details](#)

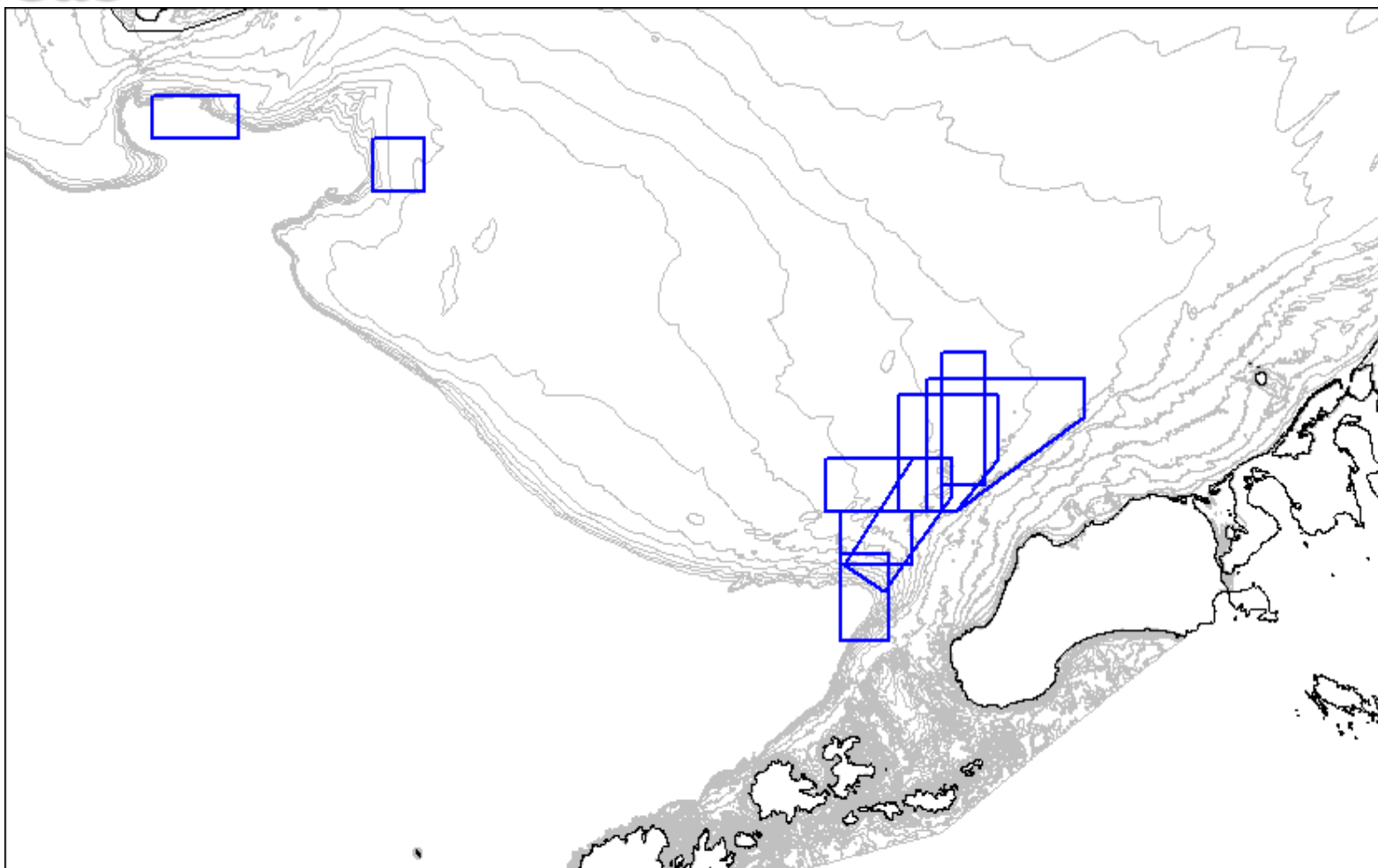


VMS track:

<https://acct.seastateinc.com/Seastate/a.aspx?n=1&a=1507&b=024460568&cc=1662>



# 2013 CP IPA results—Bycatch Avoidance Areas

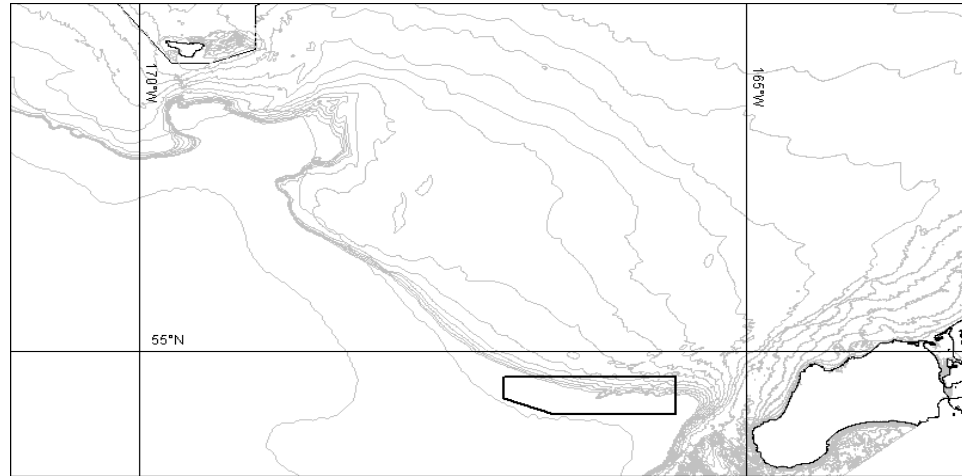


Week	1/31	2/7	2/14	2/21	2/28	3/7	3/14	3/21	3/28	4/4
Number of CPs excluded from BAAs	4	4	1	4	9	1	3	3	1	5

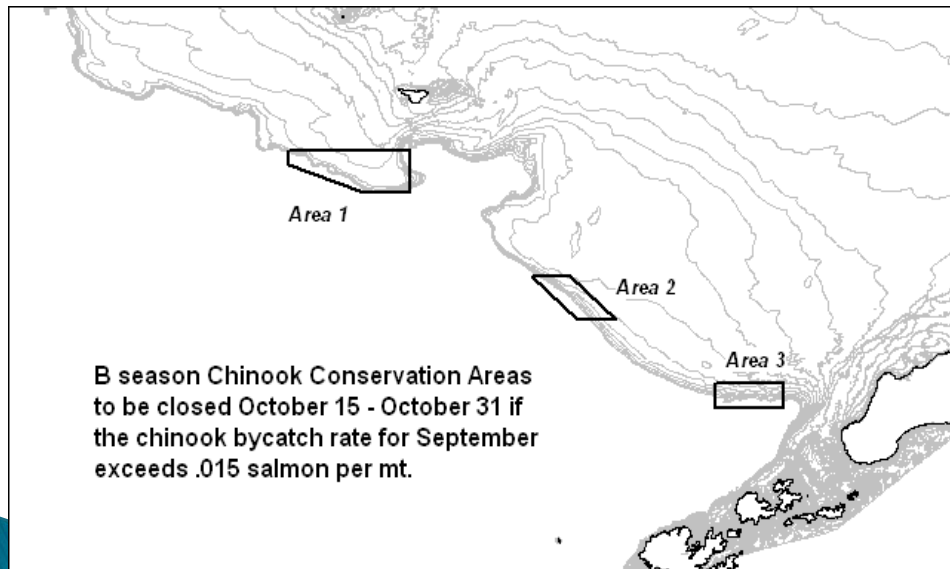
## Conservation Areas

735 square mile area closed to all pollock fishing 100% of the time during A season

## A-season Chinook Conservation Areas



## B-season Chinook Conservation Areas



Areas totaling 1295 square miles closed to CP pollock fishing Oct 15-Oct 31 if the Chinook bycatch rate for September exceeds 1.5 Chinook per 100 tons pollock.



# Draft 2014 –Final Report Due April 1

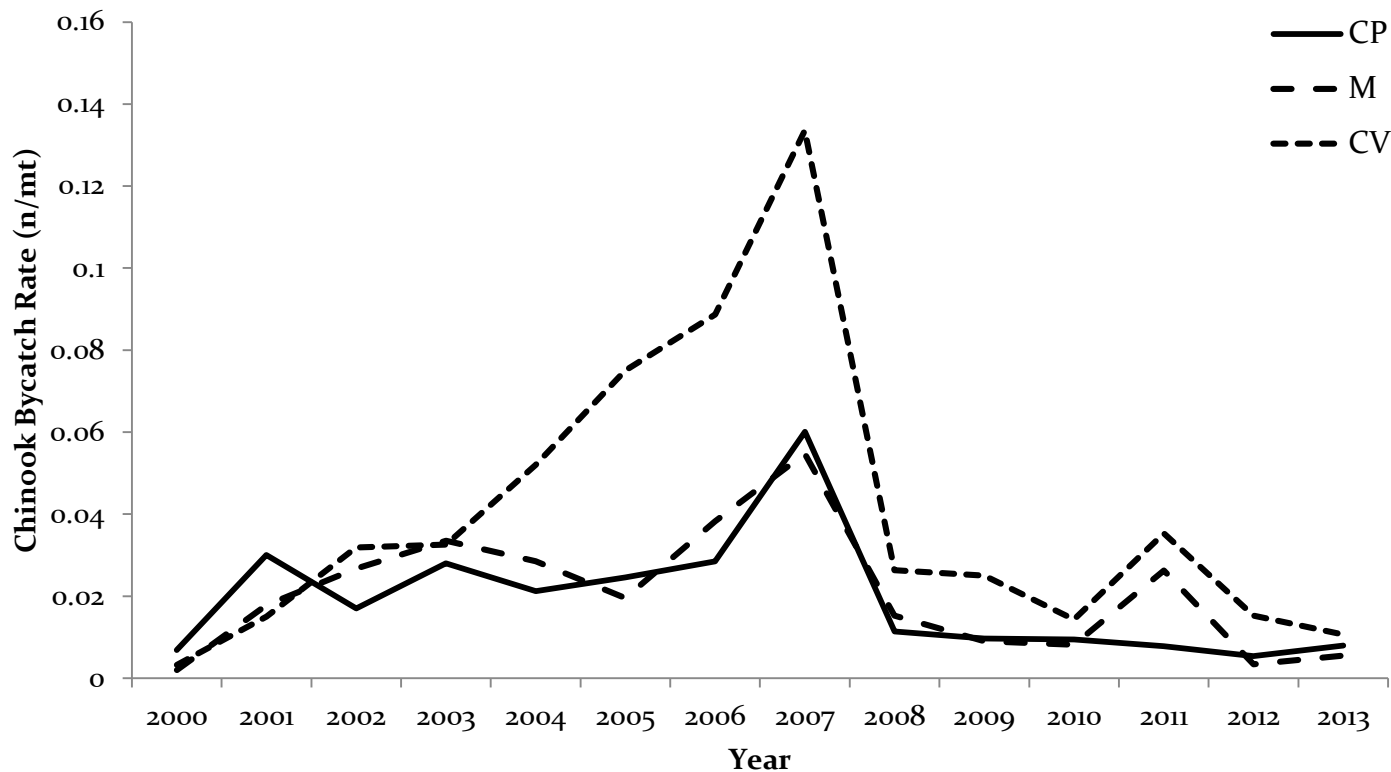
Table 3. CP IPA Chinook Salmon Bycatch Performance, 2014

Season	Pollock (t)	Chinook Salmon (n)	Bycatch Ratio (n/t)
A + B	573,726	5,254	0.009





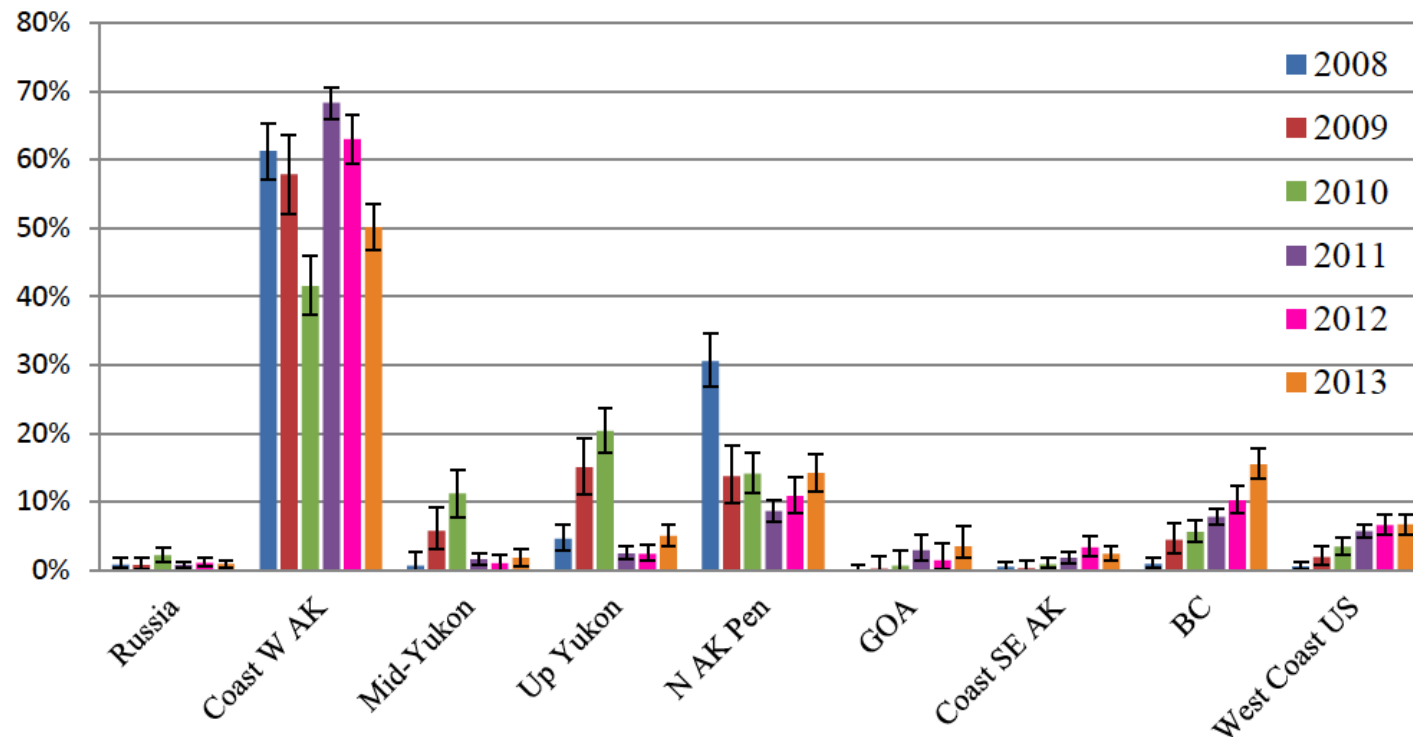
# 2014 CP IPA results—Chinook PSC rates



Year	A-season (n/mt)	B-season (n/mt)	A+B-season (n/mt)	A+B season (m/t) four year interval
2007	0.100	0.017	0.066	0.027
2008	0.027	0.002	0.012	
2009	0.021	0.002	0.010	
2010	0.024	0.000	0.009	
2011	0.010	0.006	0.008	0.008
2012	0.013	0.000	0.005	
2013	0.018	0.001	0.008	
2014	0.020	0.002	0.009	

# Genetic Stock Composition Analysis of the Chinook Salmon Bycatch from 2013 BS Pollock Trawl Fishery

NOAA Technical Memorandum NMFS AFSC-290 January 2015



**Figure 6.** -- Comparison of yearly stock composition estimates (2008-2013) from the BSAI Chinook salmon bycatch. Estimates from 2011-13 are overall bycatch estimates whereas earlier compositions are of available sample sets. The same genetic baseline and general regional groupings were used in all analyses. GOA group consists of combined values for NWGOA, Copper, and NE GOA. BAYES 95% credible intervals are plotted for yearly estimates.

# 2015 IPA provisions

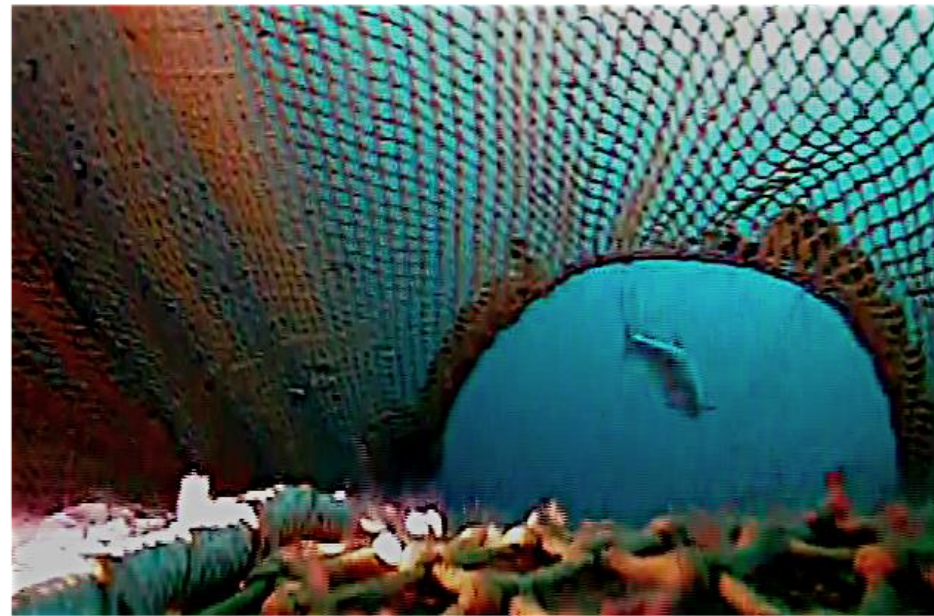
## Increased Communication

- Twice weekly reporting from PCC
- Weekly reporting from IPA
- Alarm alert and special alert reports

## Salmon Excluder Use

A-season-January, February  
March

B-season-September and  
October



# 2015 IPA Provisions

## ▶ New Vessel Performance Marker

- ▶ A “**vessel outlier**” in any given pollock fishing season would be defined as a vessel whose performance (bycatch rate) is greater than 1.5 standard deviations from the mean of the fleet performance distribution by season

- ▶ A “**consistent outlier**” would be defined as three consecutive seasons as a vessel outlier for any one vessel.

- ▶ A **penalty structure** would apply for consistent outliers .

Vessel ID	2007		2008		2009		2010		2011		2012		2013	
	A	B	A	B	A	B	A	B	A	B	A	B	A	B
34	0.44	-0.07	1.73	0.24	0.36	-0.61	1.08	2.33	1.01	0.46	0.75	2.84	1.71	2.51
76	1.34	1.47	0.10	2.97	-1.07	2.78	-0.24	-0.01	1.11	-1.21	2.32	1.40	1.02	0.86
11	1.19	-0.68	0.44	-0.66	-0.18	-0.09	1.80		1.40	1.07	1.08	-0.03	0.71	0.82
24	0.85	-0.23	-0.55	-0.46	0.73	-0.73	-0.41	-0.19	1.05	-0.01	0.66	-0.43	0.06	0.20
21	0.15	-1.67	0.68	-0.62	-0.84	-0.92	1.79	-0.41	0.52	-0.36	-0.82	-0.47	-0.37	-0.72
20	0.01	0.06	0.82	-0.54	-0.92	0.08	-1.00	-0.74	-0.37	-0.45	0.58	-0.57	0.00	-0.83
35	-0.90	0.45	0.59	-0.41	1.53	0.45	0.13		-0.88	-0.21	-0.53	-0.56	0.63	-0.81
10	-1.14		-0.57				-0.11		1.04		-0.89		0.12	
15	-1.15	0.28	1.12	-0.38	1.74			-0.36	-0.97	-0.59	0.39	-0.10	1.91	-0.65
25	0.46	-1.17	0.52	-0.19	-0.85	-0.76	-0.99	-0.59	-0.16	0.54	-0.34	-0.57	0.78	0.25
33	1.56	-1.21	-0.82	-0.48	0.18	0.47	-0.23	-0.21	-0.57	-1.18	-1.34	-0.35	0.28	
51	-1.22	0.33	-1.47			-0.71	0.21	-0.74	-0.80	-0.56	-0.29	-0.45	0.91	-0.50
62	-0.89	0.86	-1.20	0.44	-0.68	-0.05	-0.97	-0.61	-0.63	2.54	-0.74	-0.22	1.41	-0.44
75	-0.71	1.60	-1.38	0.08		0.08	-1.06	1.54	-1.76	-0.04	-0.84	-0.50	0.91	-0.68



# Food Bank Efforts

Bean's Café  
Anchorage



Millionaire Club - Seattle

**SEASHARE**

*APA members partner with  
SeaShare, a non-profit  
hunger relief organization,  
by donating 1 million  
meals annually.*

# Summary

Technology continues to evolve in both gear development and communication tools to assist the fleet to avoid Chinook salmon.

APA Members continue to support Chinook salmon research both through University of Alaska and Alaska Pacific University but also through other research foundations.

Through regular reporting there is evidence that salmon reduction measures are working to change vessel behavior and improve avoidance of Chinook salmon bycatch.

- ▶ Movement of vessels to avoid higher risk areas.
- ▶ Better Chinook bycatch performance

The NPFMC has salmon bycatch on the April agenda to consider reduced limits in times of low Chinook salmon abundance in Western Alaska.







Thank you



Aleutian Spray Fisheries  
American Seafoods Company  
Arctic Storm, Inc.  
C/P Northern Hawk  
Glacier Fish Company  
Trident Seafoods Corporation

[www.atsea.org](http://www.atsea.org)