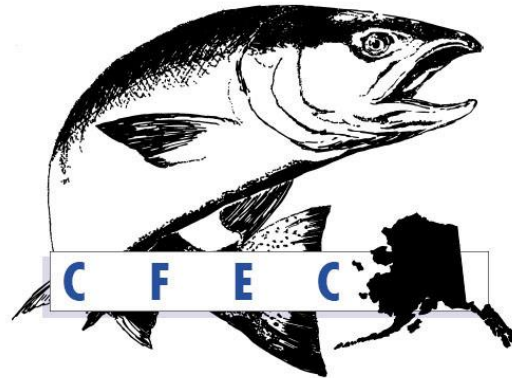


# **Commercial Fisheries Entry Commission**

## **House Finance Subcommittee FY2016 Budget Overview**



**Bruce Twomley, Chairman  
Benjamin Brown, Commissioner  
Verne Rupright, Commissioner**

**February 12, 2015**

# **CFEC's Mission**

**To control entry into Alaska's commercial fisheries to promote conservation of Alaska's fishery resources and economic health of commercial fishing.**



# Core Services

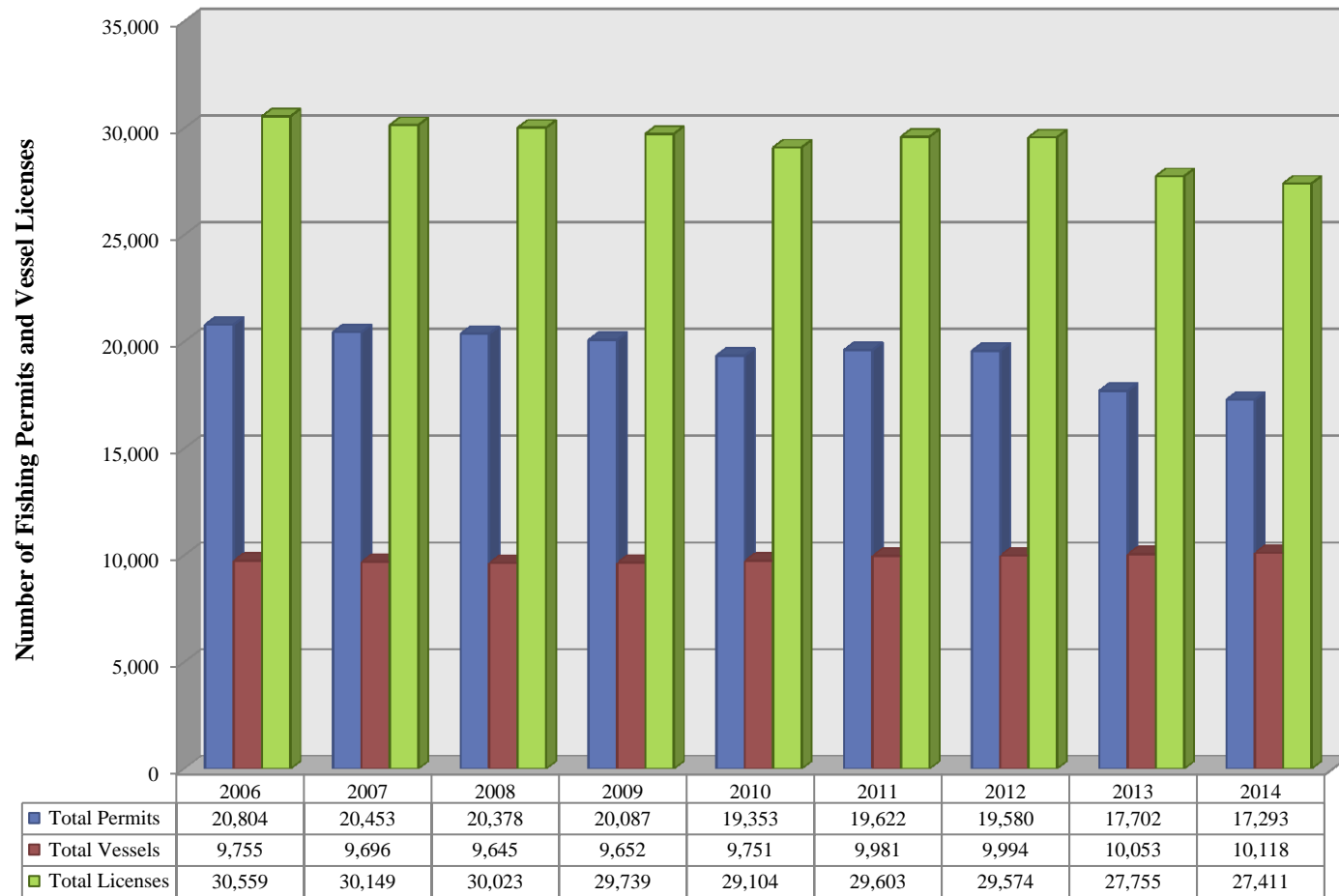
- Ensure all commission decisions are consistent with requirements of the Limited Entry Act and the Alaska Constitution.
- Timely and accurate processing and documentation of annual permit and license renewals, and of permit transfers.
- Timely publication of research reports including the monthly permit value reports.

# Agency Overview

Commissioners			
Bruce Twomley, Chairman Benjamin Brown, Commissioner Verne Rupright, Commissioner			
			<b>Administration</b> Shirley Penrose Operations Manager
			Personnel, Payroll, Travel, Accounting, Purchasing, Document Archiving, Facilities/Property/Supply Management, and Budget Development
Adjudications	Licensing	Research	Information Technology
Frank Glass Project Leader	Yvonne Fink Project Leader	Kurt Iverson Project Leader	Ty McMichael Project Leader
Application Processing & Classification	Entry and Interim-use Permit Renewal	New Limitations Research	Licensing Systems
Administrative Hearings	Vessel Licensing	Priority Hardship ("Point" System) Development and Testing	Fisheries Database
Case Management	Permanent & Emergency Transfers	Optimum Number Research	Technology Development for Adjudications & Research
Decisions on Claims	Permanent File Management	Fisheries Data Collection & Database Enhancement	Agency Technical Support
Preparation of Official Record in Judicial Appeals	Collecting & Entering Licensing Revenue	Standard & Custom Reports on Fisheries Economics, Participation, and Performance	Website Design & Maintenance
Residency & Fraud Investigations	Demerit Point Assessment		
Archiving & Records			

# Commercial Licensing Program

**Fishing Permits and Vessel Licenses Issued by License Year**



# FY2016 Operating Budget

FY2015 Management Plan			FY2016 Governor		
DGF	Federal	Total	DGF	Federal	Total
4,405.8	114.4	4,520.2	4,479.2	114.4	4,593.6

## Changes from FY2015 Management Plan to FY2016 Governor

FY2016 Cost of Living Salary Increases	82.5
FY2016 Health Insurance Rate Reduction	-9.1
Total Change	73.4
Percent of change from FY2015 to FY2016	2%

**Commercial Fisheries Entry Commission's**

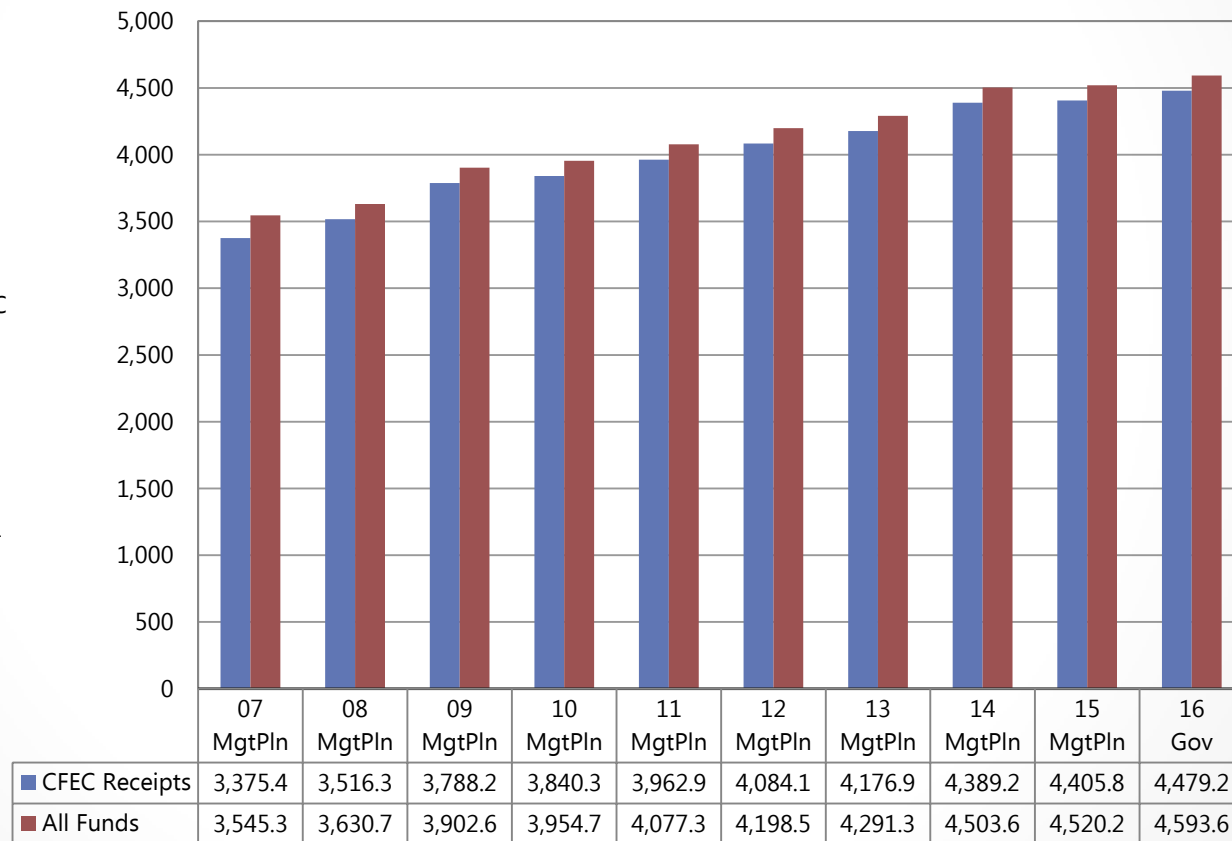
Total budget grew by \$1.0 million between FY07 and FY16 Governor's Request -- an increase of 30%

Growth has been due to contractual health insurance and cost of living salary increases.

In addition to CFEC Receipts, the FY16 Governor's Request includes \$114.4 in Federal Receipts for data processing work and reporting with federal agencies -- examples include the National Marine Fisheries Service and the Internal Revenue Service

## Commercial Fisheries Entry Commission

All Funds  
\$ Thousands



# Major Accomplishments in 2014

- Information Technology
- *Carlson v. State* class action
- Status of Alaska Limited Entry Permits
- Licensing
- Chinook Salmon Mitigation
- Fleet Reduction
- General Assistance and Coordination

# Issues and Challenges

- Federal Legislation

# Proposed Changes for FY2016

- Closing Out and Limiting Fisheries
- Optimum Numbers

➤ **Any Questions?**