



Alaska Department of Transportation & Public Facilities

Roads to Resources

Joint House/Senate Transportation Committees

January 22, 2013

Patrick Kemp, P.E.
Commissioner

Murray Walsh.
Roads to Resource Manager



Roads to Resources Program

- Road to Resources funds have previously been used on smaller economic development projects
- Focus expanded to larger projects to fill the pipeline, create jobs, and increase commerce





Roads to Resources Program

Guidelines for funding and design standards:

- Initial permitting accomplished by DOT&PF
- Initial road is “long and skinny” constructed to minimum design standards to support development startup
- Initial road is funded either by DOT&PF or in partnership with the developer
- A long-range public/private partnership agreement would be forged to best fit both partners



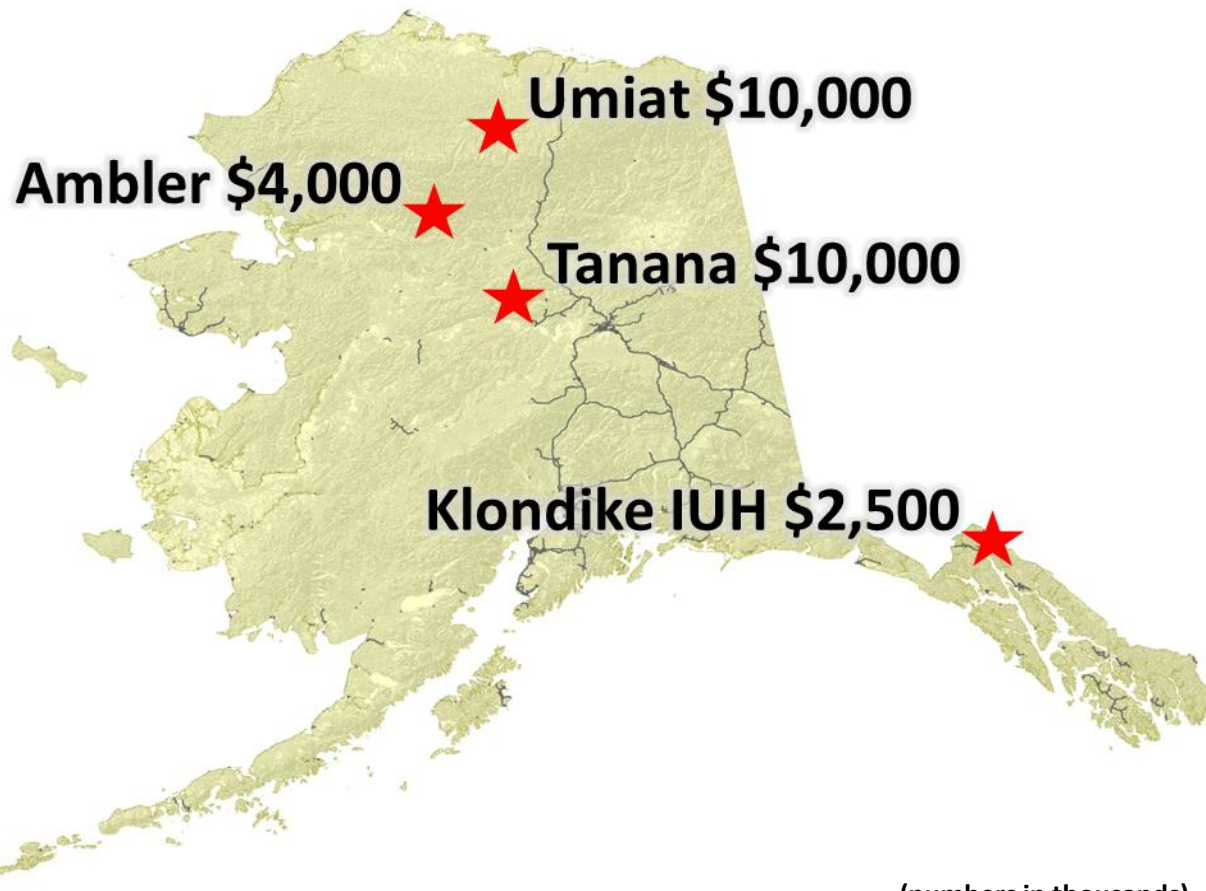
Roads to Resources Program

- Road is improved to higher standards as traffic and development dictates
- Funding to improve the road will be borne by the resource developers
- Roadway could be designated an “Industrial Use Highway” in order to charge tolls to industrial users (AS 44.62)
- Annual M&O costs could be funded with IUH receipts



Roads to Resources 2013 Capital Budget

★ **Statewide Roads to
Resource Program
Development and
Small Projects
Evaluation \$2,000**



(numbers in thousands)



Roads to Resources 2014 Capital Budget Request

- ★ **Statewide Roads to Resource Program
Development and Small Projects Evaluation
\$2,000,000**
- ★ **Ambler Access, \$8,500,000 in AIDEA budget
request**
- ★ **Dalton Highway Upgrade, \$7,500,000**

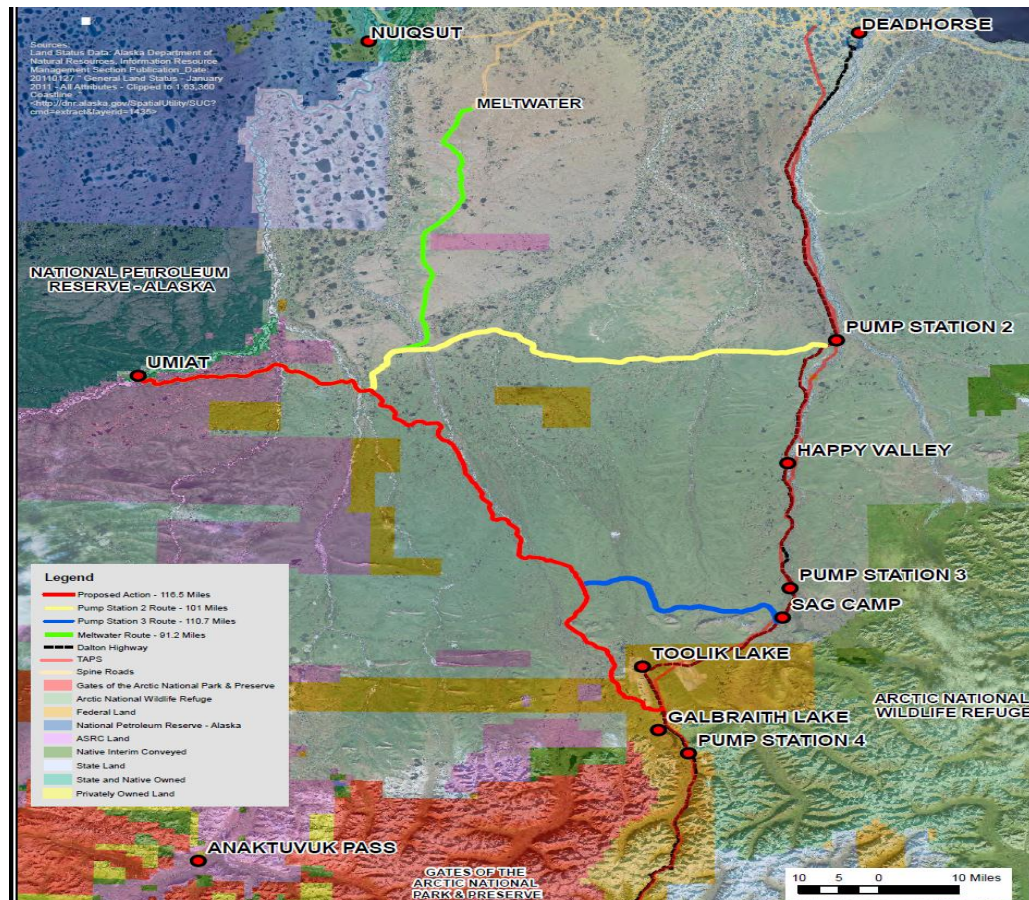


Road to Umiat – Foothills West

- Umiat is a petroleum rich area, 200 to 300 million barrels of oil, and trillions of cubic feet of gas
- 18' wide road with inter-visible turnouts
- \$200 million to \$300 million construction estimate for road and bridges
- Corps of Engineers is lead federal agency on NEPA, R.O.D. in early 2015



Road to Umiat - Foothills West





Roads to Resources

Ambler Mining District Access

- Ambler Mining District is a mineral rich area (Cu, Zn, Pb, Ag, and Au)
- 300 direct jobs for development of NovaCopper's Arctic deposit
- NovaCopper and NANA Corp. have entered into a partnership to develop mineral resources
- FY 2014 budget request includes \$8,500,000 for AIDEA to continue the work



Ambler Mining District

- Contains over 120 million tons: Cu, Zn, Pb, Ag, Au resources yielding:

Published or Announced Mineral Resources

(6 of 106 Mineral occurrences)

September 17, 2010 DNR Report

Copper - 4,360,000 tons

Zinc - 5,629,000 tons

Lead - 900,000 tons

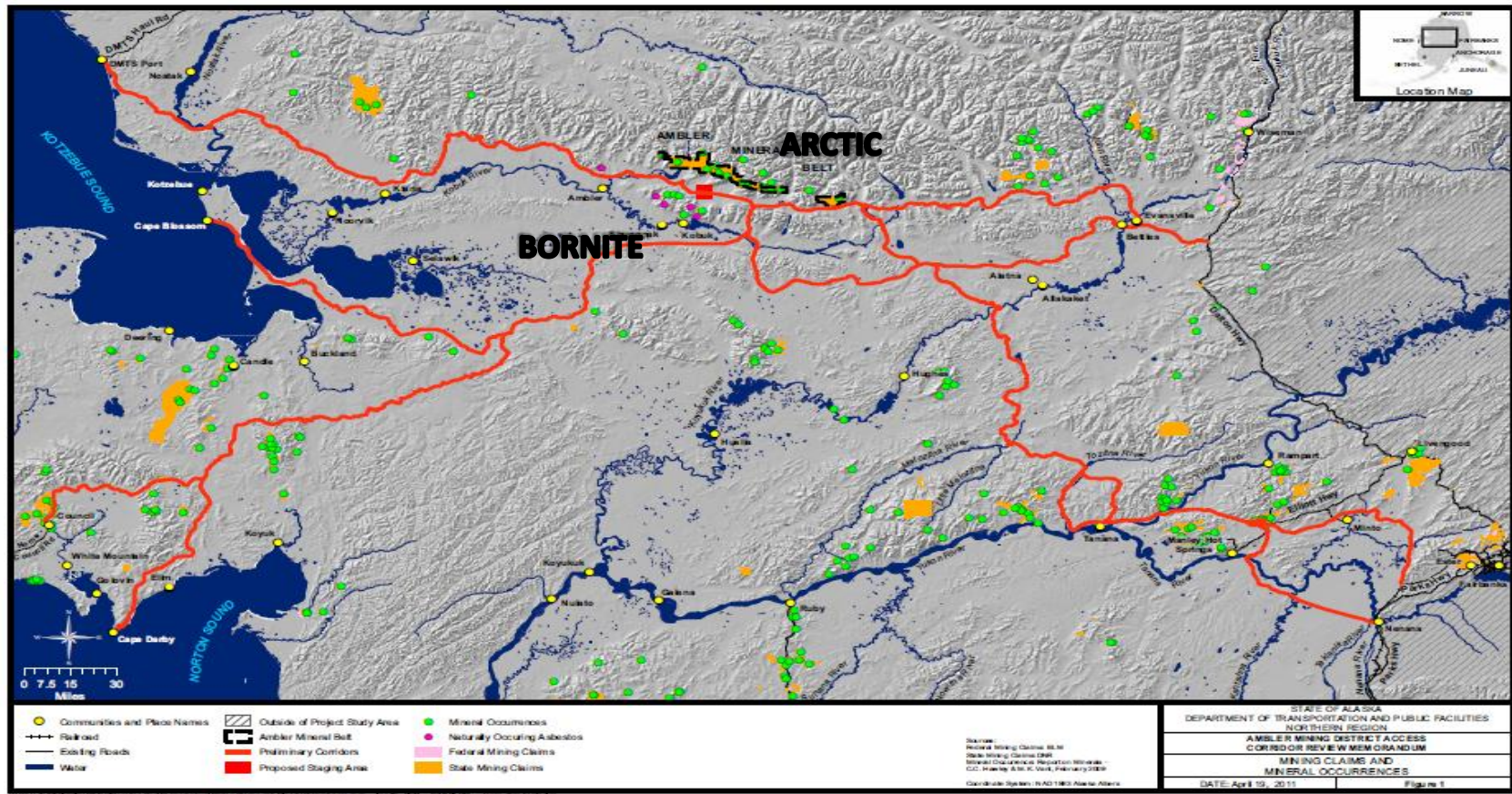
Silver - 240,000,000 ounces

Gold - 1,940,000 ounces

- Development of Arctic deposit would create over 300 direct jobs for Nova Copper proposal



Ambler Mining District Access



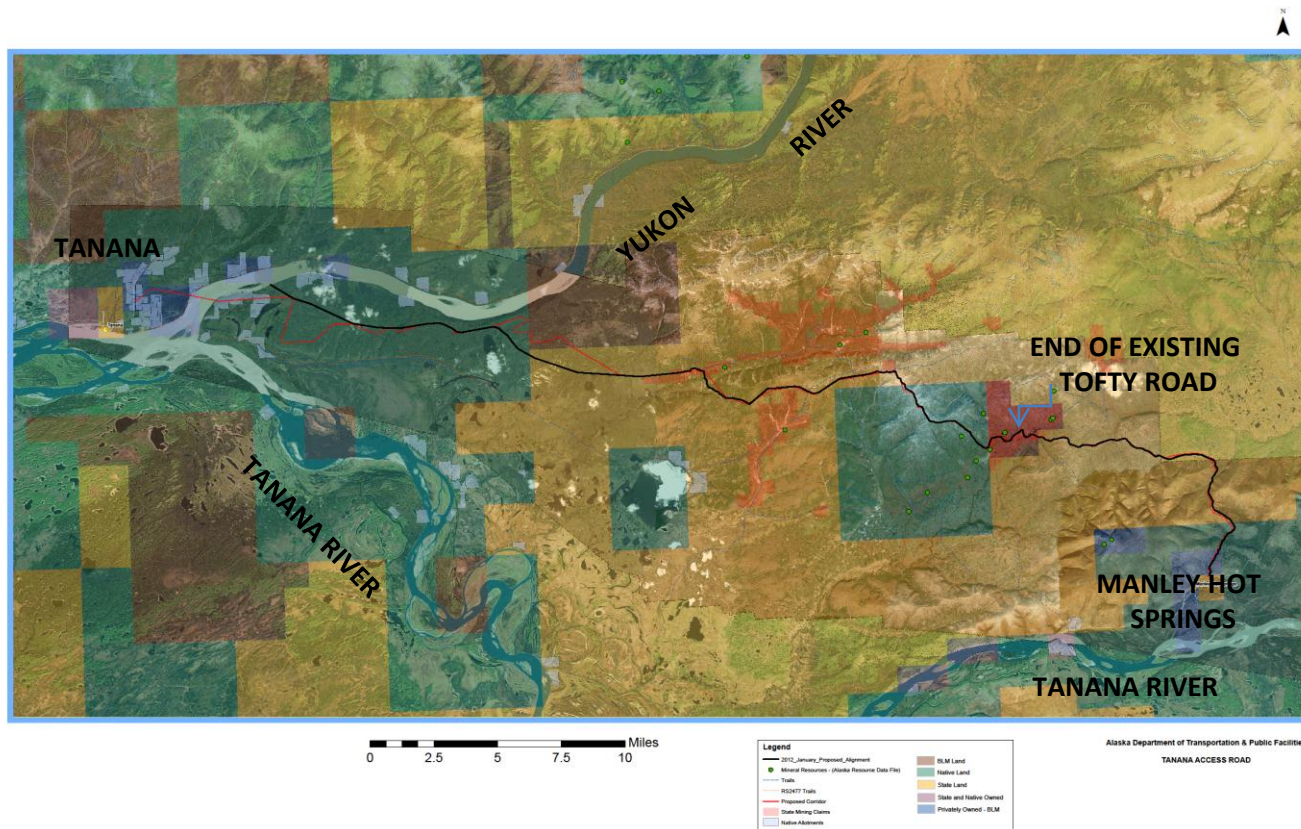


Road to Tanana

- Mineral rich area with mines in production
- Added benefit of providing road access to the community of Tanana
- 18' wide road with inter-visible turnouts
- Began construction in 2013



Tanana Access Road Map



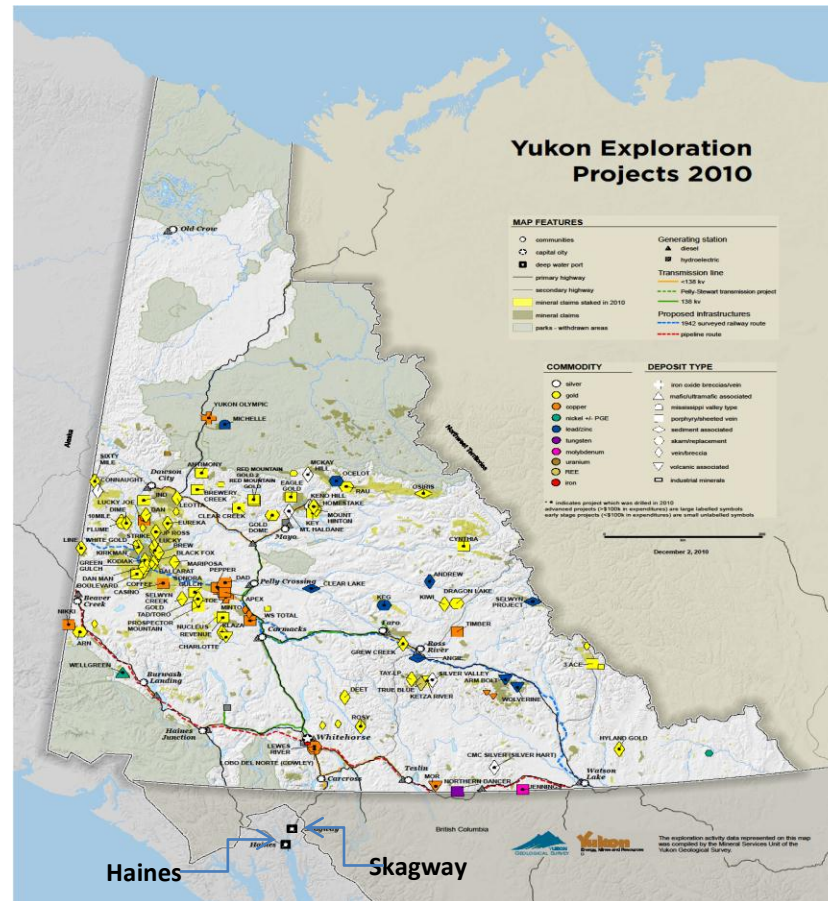


Klondike Industrial Use Highway (IUH)

- Yukon ore haul volumes to Skagway are projected to significantly increase due to Canadian mine industry growth
- The Klondike IUH is the only Industrial Use Highway in Alaska (Allows oversize/overweight hauls, based on cost recovery of damages)
- Tolls collected since 1985
- Replace bridge and strengthen pavement to support heavy haul ore trucks



Klondike Industrial Use Highway (IUH)





Other Projects

- West Susitna Access Reconnaissance, Report in mid – 2013
- Niblack Mine Access- Prince of Wales (Au, Ag, Cu, Zn, Pb)
- Bokan Mtn. Mine Access- Prince of Wales (REE)
- Totchaket Road- Nenana (ag/tim/oil/gas/min) \$6.5MM in 2012 bond – City of Nenana
- Granduc Mine- Hyder Salmon Road (Cu) Road upgrade, possible IUH
- Petersburg – Kake, \$40,000,000 in FY 2013 budget, NEPA underway
- SE LiDAR, \$5MM in FY2013,
- Katlian Valley Access (Quarry) – Sitka, \$14MM approved in 2012 bond



Thank you!

Questions?