

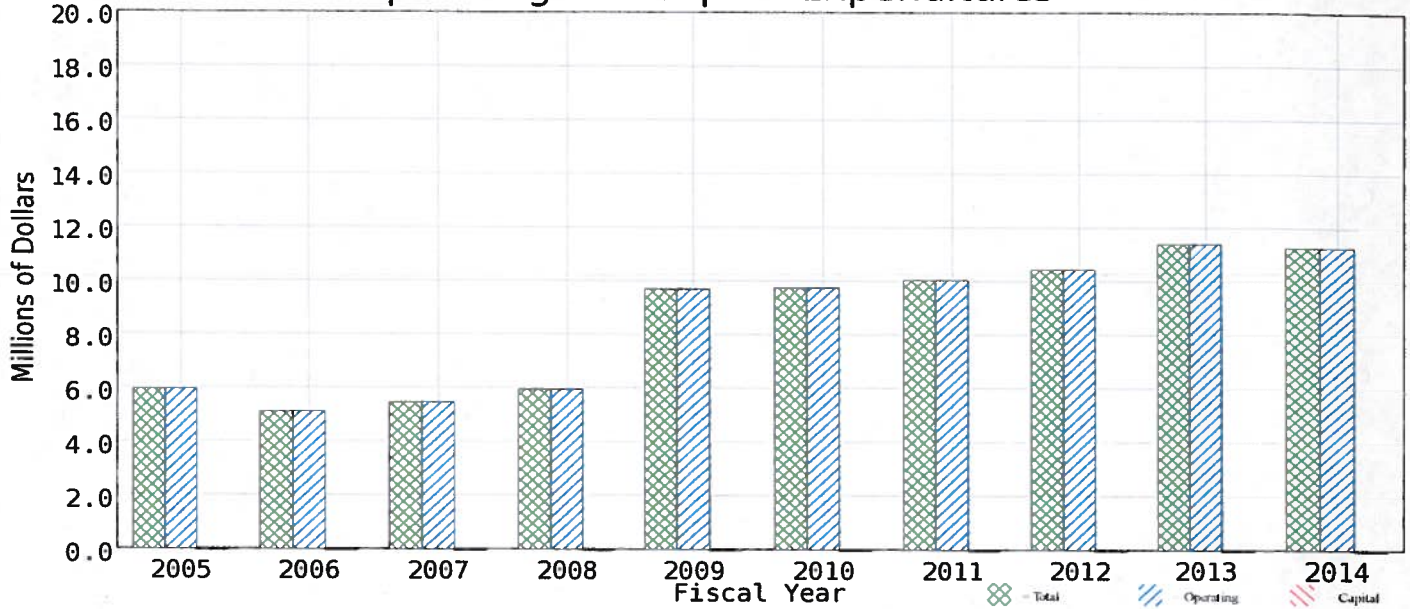


Fund Source Report

1151 VoTech Ed Technical Vocational Education Program Receipts

Year Authorized 2000 Year Repealed Active? Yes Mental Health? No Duplicated? No Fund Group Designated General

Operating and Capital Expenditures



Legal Authority
 AS 23.15.830 AS 37.10.200

Source of Revenue
 The Department of Labor and Workforce Development shall collect from each employee an amount equal to one-fifteenth of one percent of wages on which the employee is required to make unemployment insurance contributions. The Dept of Labor shall assess and collect interest and penalties for delinquencies.

Restrictions on Use
 The fund shall provide for grants for technical and vocational education entities.

Description and History
 AS 23.15.830 established the Alaska Technical and Vocational Education Program account as a sub-account of the General Fund. The Department of Labor and Workforce Development collects from each employee an amount equal to one-fifteenth of one percent of the wages on which the employee is required to make contributions under the Alaska Employment Security Act. This new account is similar in operation to the existing STEP account. Appropriations are required to expend funds.

The Alaska Human Resource Investment Council (AHRIC) (renamed the Alaska Workforce Investment Board) manages the grants from the fund. During FY01, legislation directed the AHRIC to provide the total amount of collections to three state institutions: University of Alaska (52%), Kotzebue Technical Center (16%), and Alaska Vocational Technical Center (32%).

The distribution changed in Sec. 48, CH 86, SLA 2002 to the following: University of Alaska (63%), Kotzebue Technical Center (11%), Alaska Vocational Technical Center (22%), and Galena Project Ed Vocational Training Center (4%).

The distribution changed in CH 133, SLA 2004 to the following: University of Alaska (55%), Kotzebue Technical Center (11%), Alaska Vocational Technical Center (22%), Galena Project Ed Vocational Training Center (4%), Southwest Alaska Vocational and Education Center (4%) and Yuut Eilitnaurviat, Inc. People's Learning Center (4%). This distribution is fixed through FY2010.