

# Impact of the AFHCAN Telehealth Program in Alaska

Stewart Ferguson, PhD  
Chief Information Officer (CIO)  
Alaska Native Tribal Health Consortium



- Impact on Medicaid Population
- Statewide Impact
- Future directions



# ANMC Telehealth Specialty Services

---

ANMC specialists completed and billed for 22,597 “Store and Forward” Telehealth consultations from 2003 to 2012.

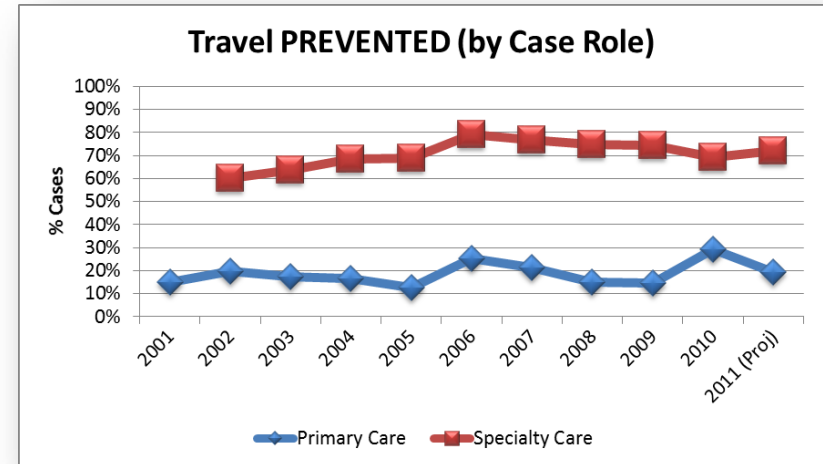
- 11,000 encounters billed to Medicaid (49%)
- 13,257 Unique patients
  - 6,030 Medicaid eligible patients (45%)

ANMC received \$612,798 in payments



# Estimating Patient Travel

- 75% of Specialty Cases prevent patient travel
- Travel is prevented to nearest regional hub
  - 16% of all patients lives in regional hub and have no travel savings to hub
- 25% avoid further travel to Anchorage
- Telehealth cases in same week prevent only 1 trip

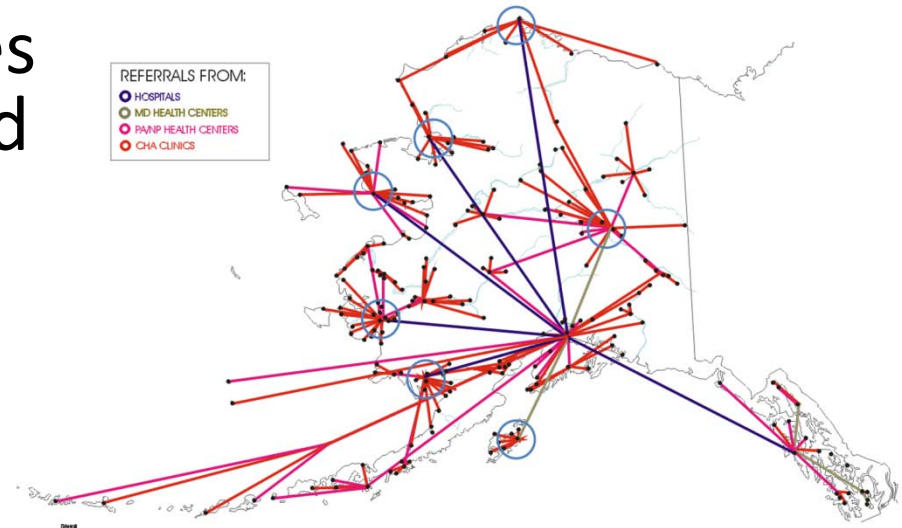


# Additional Details

- Children require guardian to travel
- Patient locale determines travel costs, mileage, and cheapest route of travel.
  - 234 locales throughout Alaska
  - 7 day advance airfares when possible
  - DOD per diem rates used for food and lodging

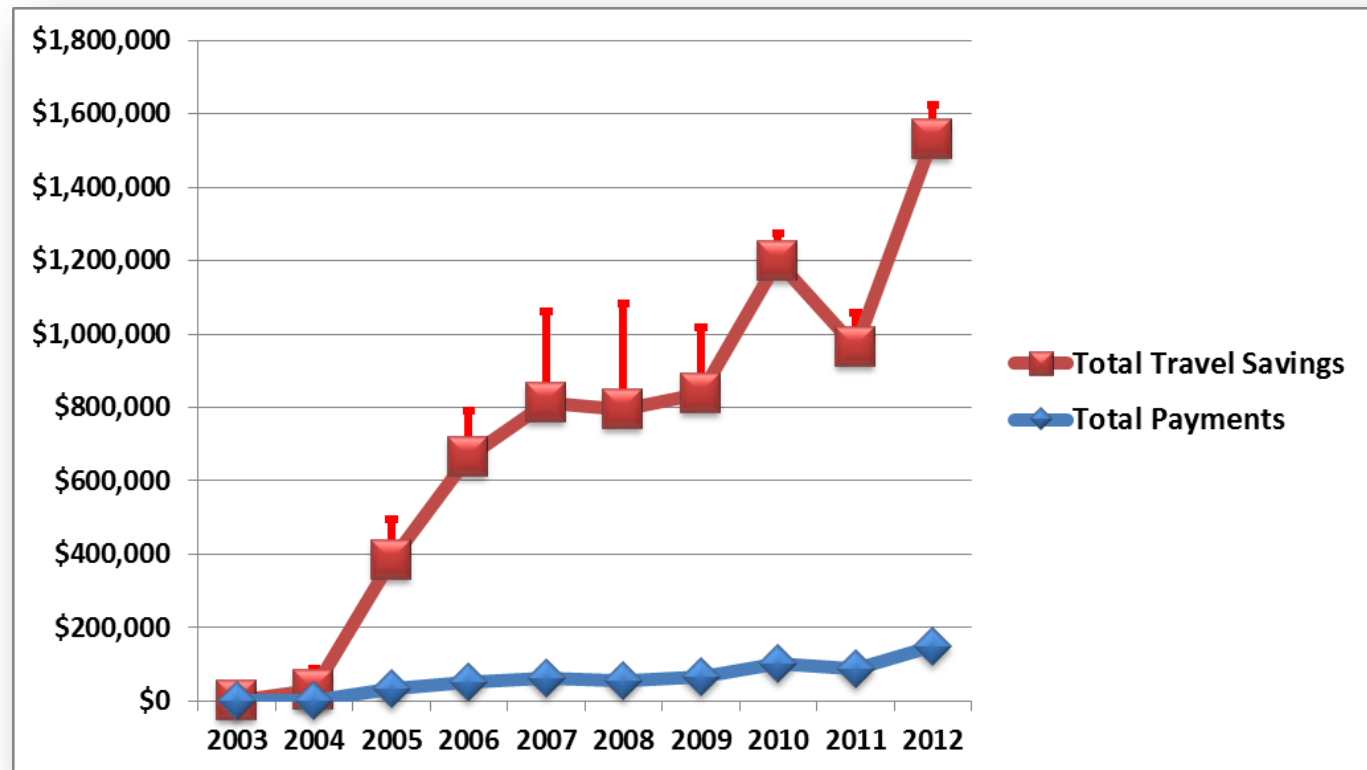
## THE ALASKA NATIVE HEALTH CARE SYSTEM

Typical Referral Patterns



# Estimated Travel Savings for Medicaid Population from Specialty Care

Overall, the estimated annual savings from specialty care for Medicaid amounts to about \$1.6m with a total savings of \$8.5m since 2003.



*Average travel cost: \$800.*



# Telehealth Primary Care Services

---

ATHS providers completed 114,000 “Store and Forward” Telehealth encounters from 2003 to 2012

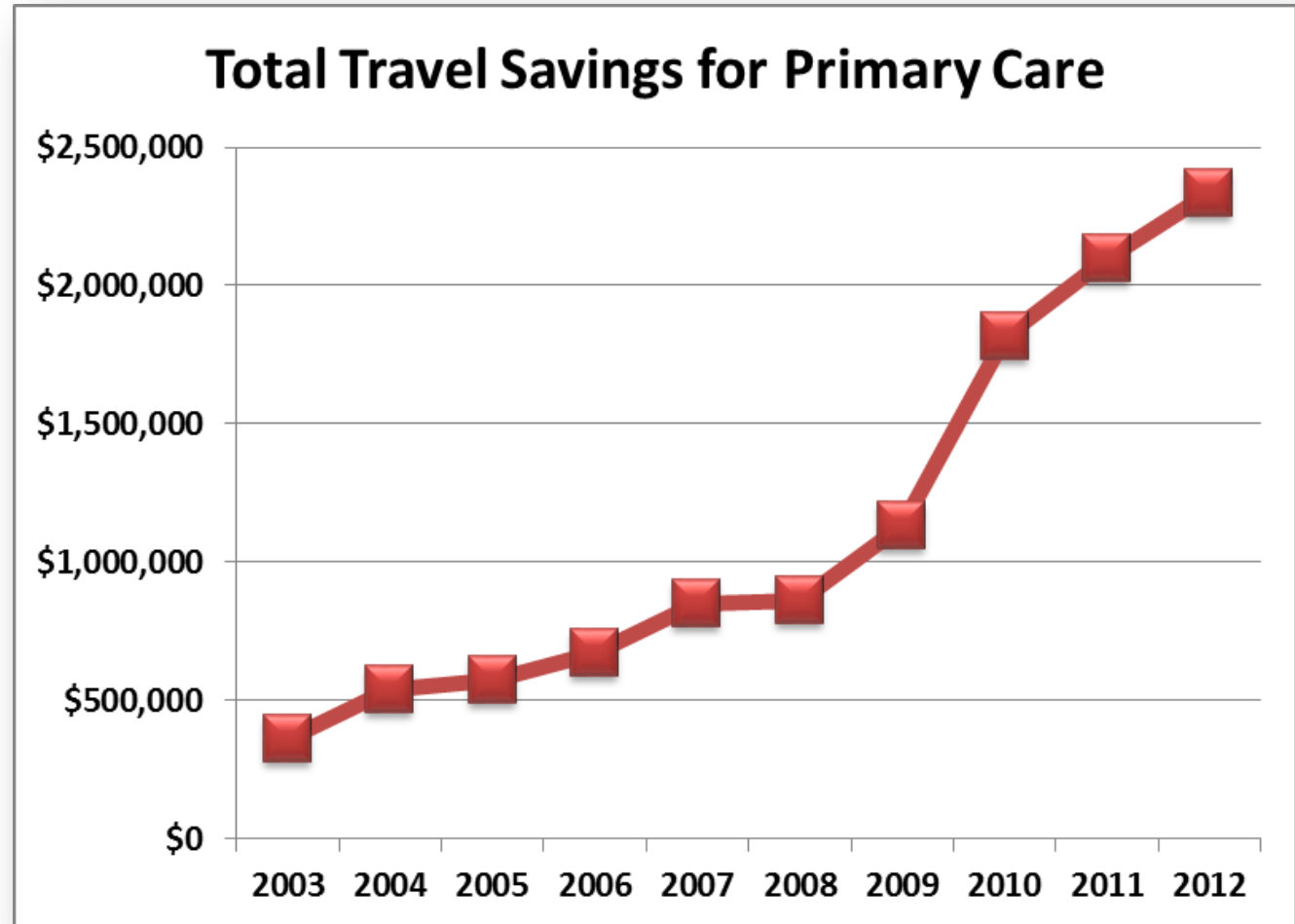
- An estimated 56,000 encounters involved Medicaid eligible patients (49%)
- 20% prevented travel to a regional facility
  - Of these, 20% prevented further travel to Anchorage

Assume age and location distribution similar to specialty consultations

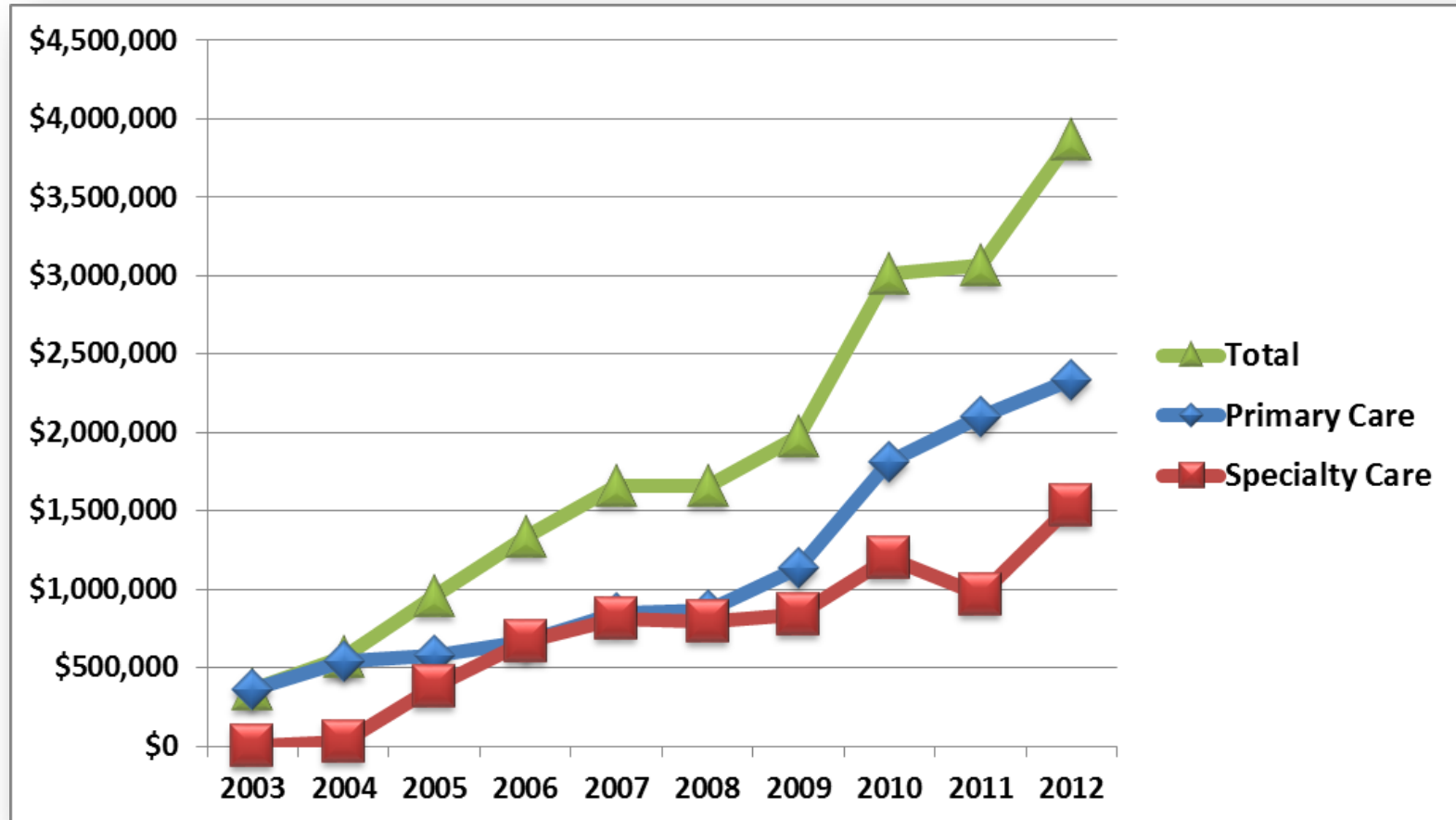


# Estimated Travel Savings for Medicaid Population from Primary Care

Overall, the estimated annual savings from specialty care for Medicaid amounts to about \$2.3m with a total savings of \$11.2m since 2003.



# Estimated Travel Savings for Medicaid Population from Telehealth

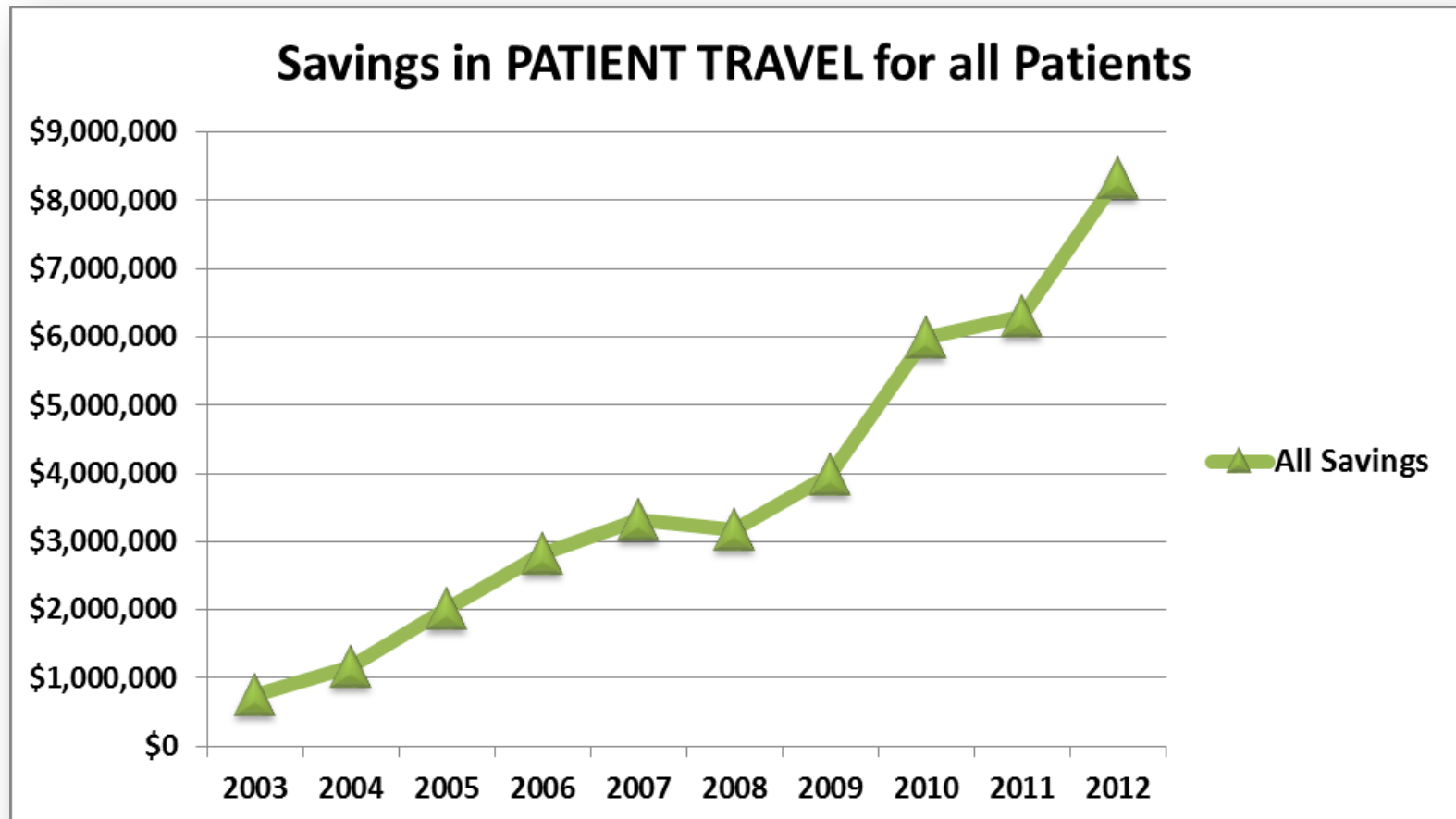


Estimated annual savings from telehealth for Medicaid amounts to about \$3.9m with a total savings of \$18.5m since 2003.





# Estimated Travel Savings for ALL Patients from Telehealth



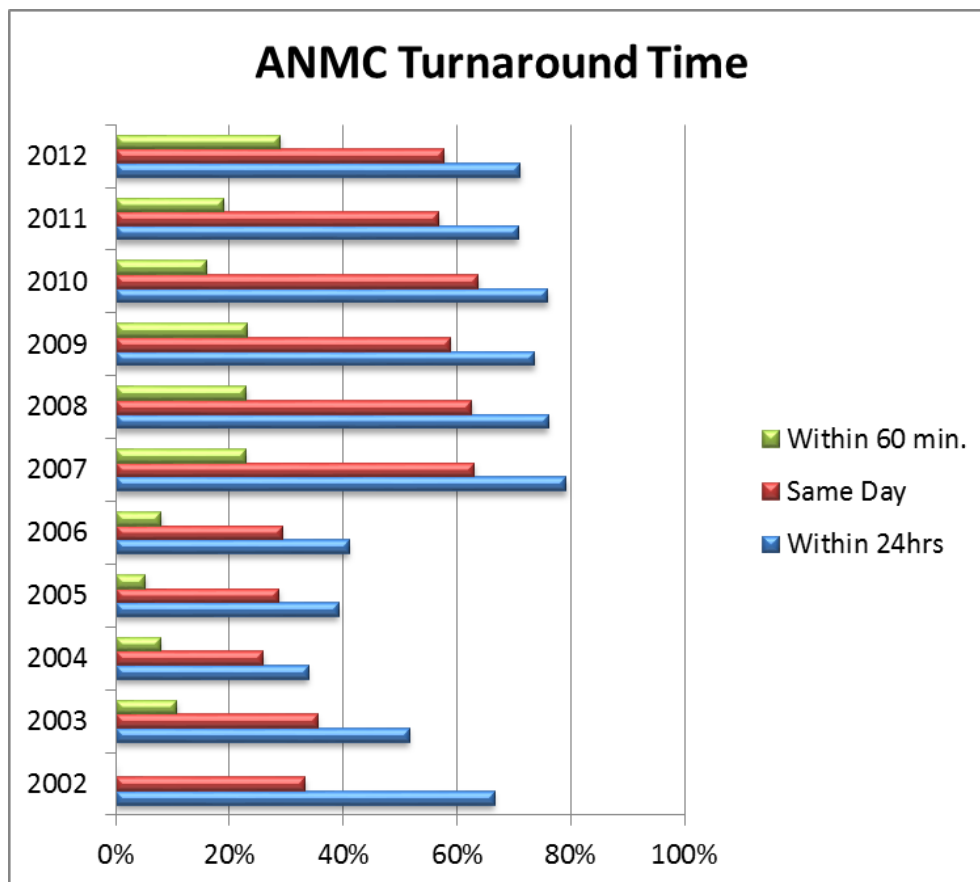
Estimated annual savings from telehealth for all patients amounts to about \$8.3m with a total savings of \$38m since 2003.



# Return on Investment

Medicaid now saves an estimated \$10 to \$11 for every \$1 spent on specialty telehealth consultations

*Payments of \$148k in 2012 for savings of \$1.5m*



# 2012 Highlights

---

- ANMC received 7,847 specialty consultations via the AFHCAN software in 2012 – up from 4,559 in 2011.
- There were 24,687 primary care cases statewide in 2012, up from 20,935 in 2011.
- ANMC transmitted 20,127 follow-up/discharge notes in 2012, up from 4,471 in 2011.
- 1,425 unique providers created or consulted on telehealth cases using the AFHCAN telehealth system in 2012.
- 20,719 unique patients were served with the AFHCAN system in 2012 (15% of the Alaska Native population).



# Future Directions

---

- Greatly expanded role for Videoconferencing
  - Statewide desktop-based system
  - 24/7 support for acute care
- Remote patient monitoring
- EHR, HIE and Patient Portal integration



# ***Thank You***

**Stewart Ferguson, PhD**

*Chief Information Officer*

*Alaska Native Tribal Health Consortium*

*4000 Ambassador Drive*

*Anchorage, AK 99508*

(907) 729-2262

[sferguson@anthc.org](mailto:sferguson@anthc.org)

