



2014 Updates From the Field Senate Resources

April 9, 2014
BP Exploration Alaska

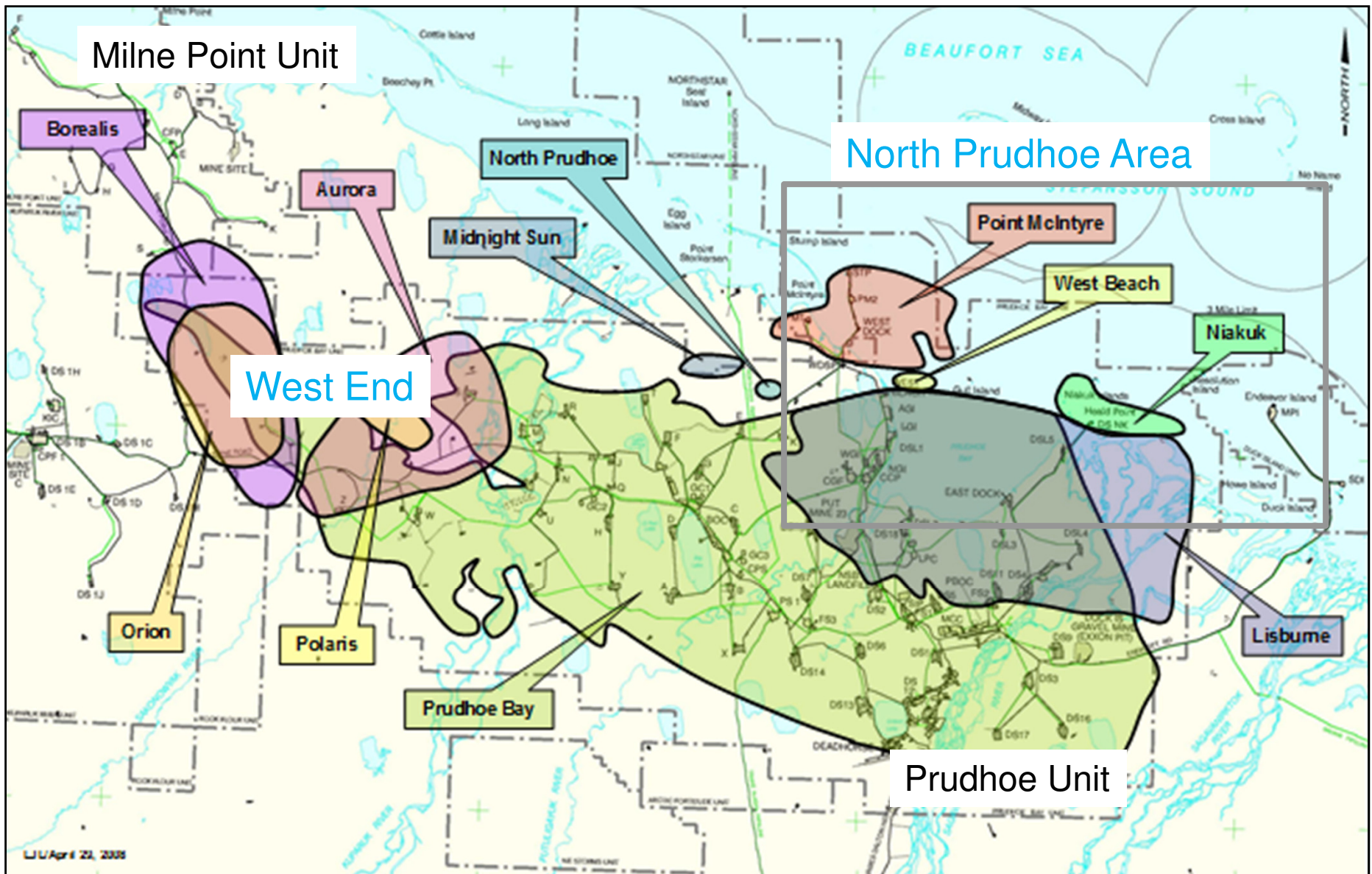
Investments in Alaska Summary



- Actively investing in the North Slope oil fields
- Acquiring new seismic data in Northern Prudhoe Bay – 190 sq. miles summer and 220 sq. miles winter season, 150 jobs, ~\$78 million, 55 million barrels resource potential
- Adding 2 new rigs with 200 jobs, \$1 billion over 5 years – currently 7 rigs
- Testing new drilling completions technology for challenging oil fields. i.e.: Sag River potential resource 200 million barrels
- Restarted development Milne Point drilling in 2014
- Appraise/Select stage engineering for West End Prudhoe Bay with potential startup in 2018, \$3 billion, peak 2022 est. 40,000 bopd
- Major facility investments committed to safe & sustainable operations, for example \$76 million in 2014 Turnarounds with over 700 people involved, including GC2 Module built at NANA's Big Lake facility – 79 jobs, \$13.5 million, potential 2,000 bopd.

Investments in Alaska

BP North Slope Operations



Investments in Alaska

North Prudhoe Bay Seismic Survey



- Summer Operations:
July – September 2014
- 3D Ocean bottom node sensors
- Camps at Deadhorse & West Dock Staging Pad



- Winter Operations:
March – April 2015
- Cable-less node sensors
- Mobile Camps and CAT Train operations
- Seismic imaging enables drilling location planning for multiple targets in four reservoirs



Investments in Alaska BP Drilling Operations



- 7 rigs performing new well and sidetrack drilling and workover operations
- In 2014 BP plans to drill 61 sidetracks and new wells plus workover another 61 existing wells
- Started up 3 new rotary drilling rigs on the North Slope since 2011
- Adding two additional rigs in 2015 & 2016, bringing the BP fleet to 9 rigs from 7 currently
- Significant investment in roads to increase rig moving efficiency for future activity
- Renewed drilling at Milne Point in 2014

Coiled Tubing Drilling Rig



Rotary Drilling Rig



Workover Rig



Investments in Alaska Prudhoe Bay West End Development



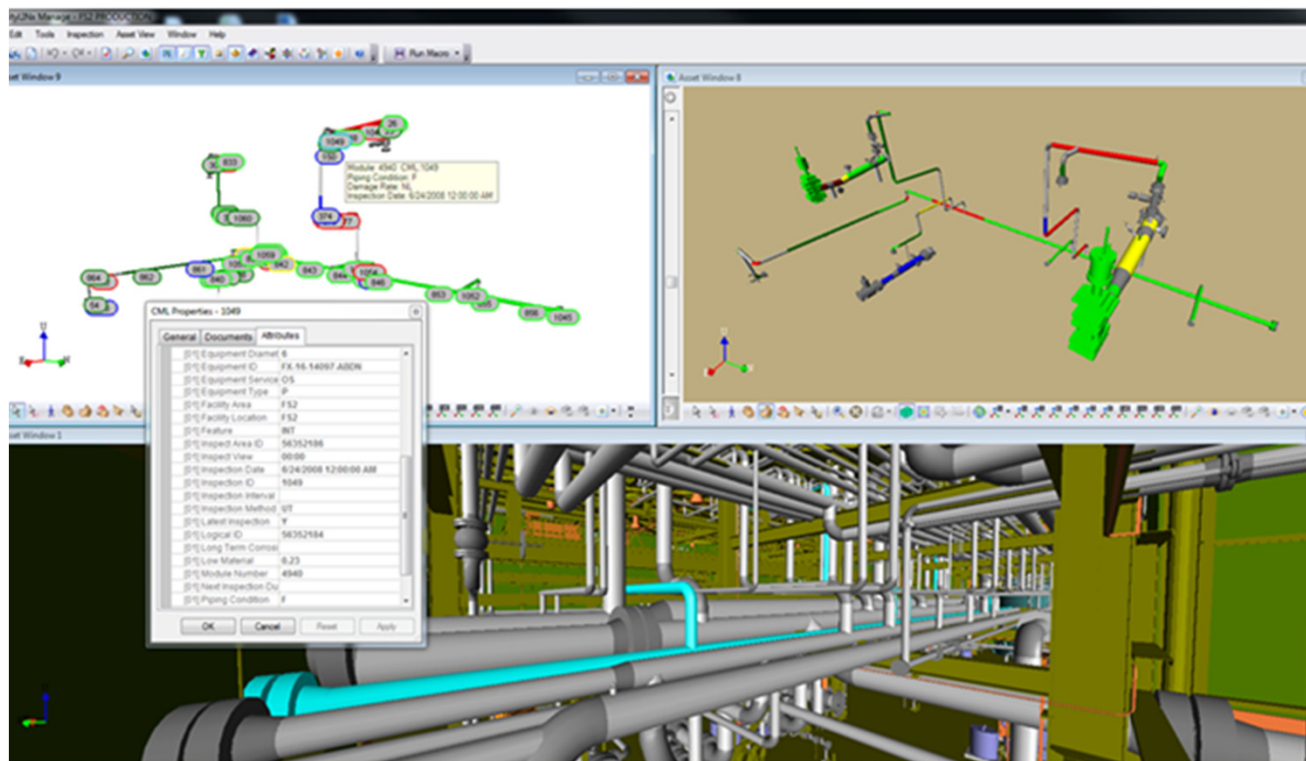
- Select Stage Engineering for one new pad and two pad expansions plus facilities



Investments in Alaska Surface Facilities Renewal



- In July, BP will shutdown three major facilities for 30 to 50 days to perform maintenance and upgrades -- Central Gas Facility, Flow Station 3, and Gathering Center 2
- These Turnarounds took over 2 years to plan
- 700 people mobilized
- Include compressor refurbishment, process and safety improvements, heat exchangers, valves
- Commitment to safe and sustainable operations



Laser imaging scans
to design, fabricate,
and install equipment