

thread, Alaska's Child Care Resource and Referral Network



Stephanie Berglund, CEO

(907) 265-3101

sberglund@threadalaska.org

thread connecting
early care & education
to alaska

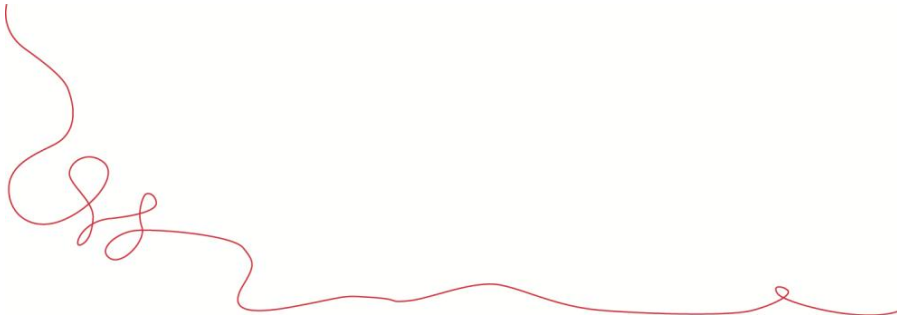
thread connects early care and education to Alaska

- Linking families with early care & education to fit their needs and choices
- Guiding early educators & programs towards quality and best practices
- Working with partners & communities together in support of families with young children



How Many Children In Early Care & Education?

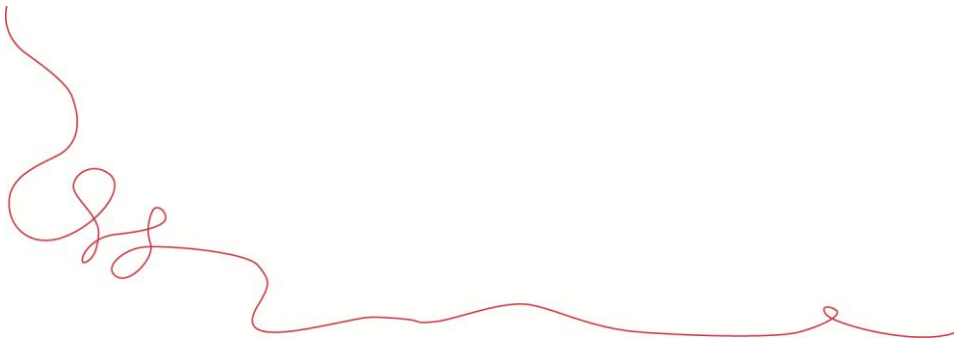
- In AK 60,000 children under age 6
- Of those 40,000 children have all of their parents in the workforce
- Less than 23,000 licensed spaces in child care, head start, preschools



Access

Affordability

Quality

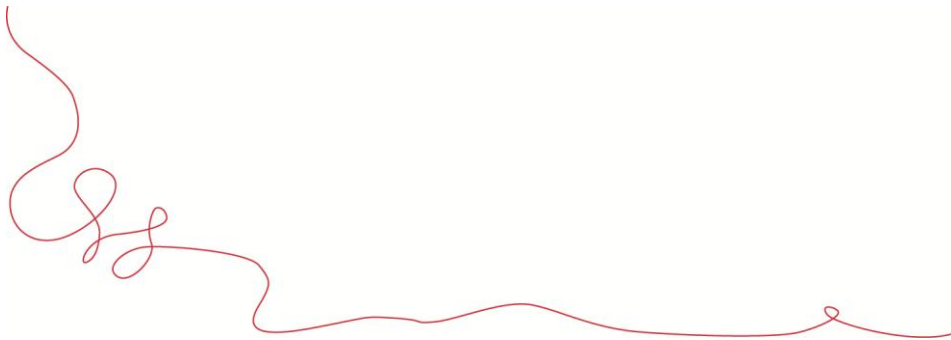


Families need child care

- The average rate for Infant and Toddler care between \$500-\$800/mo and in some areas can be \$1000
- Parents are paying the bulk of child care cost



Research indicates the single biggest
factor in the quality of a program
and in improving child outcomes
is the teacher



Programs aim to provide quality care and education



- Early Educators make an average of \$10.82/hour in Alaska without benefits
- Staff turnover is 46%
- Quality is not clearly defined
- 10% of workforce has higher education

Something Big Is Here

- Science of the brain development and importance of supporting parents and early education programs
- National momentum and support of PreK
- Quality Rating and Improvement System
- ROOTS - incentives and supports for higher teacher wages tied to increased expectations for training and ongoing professional development



