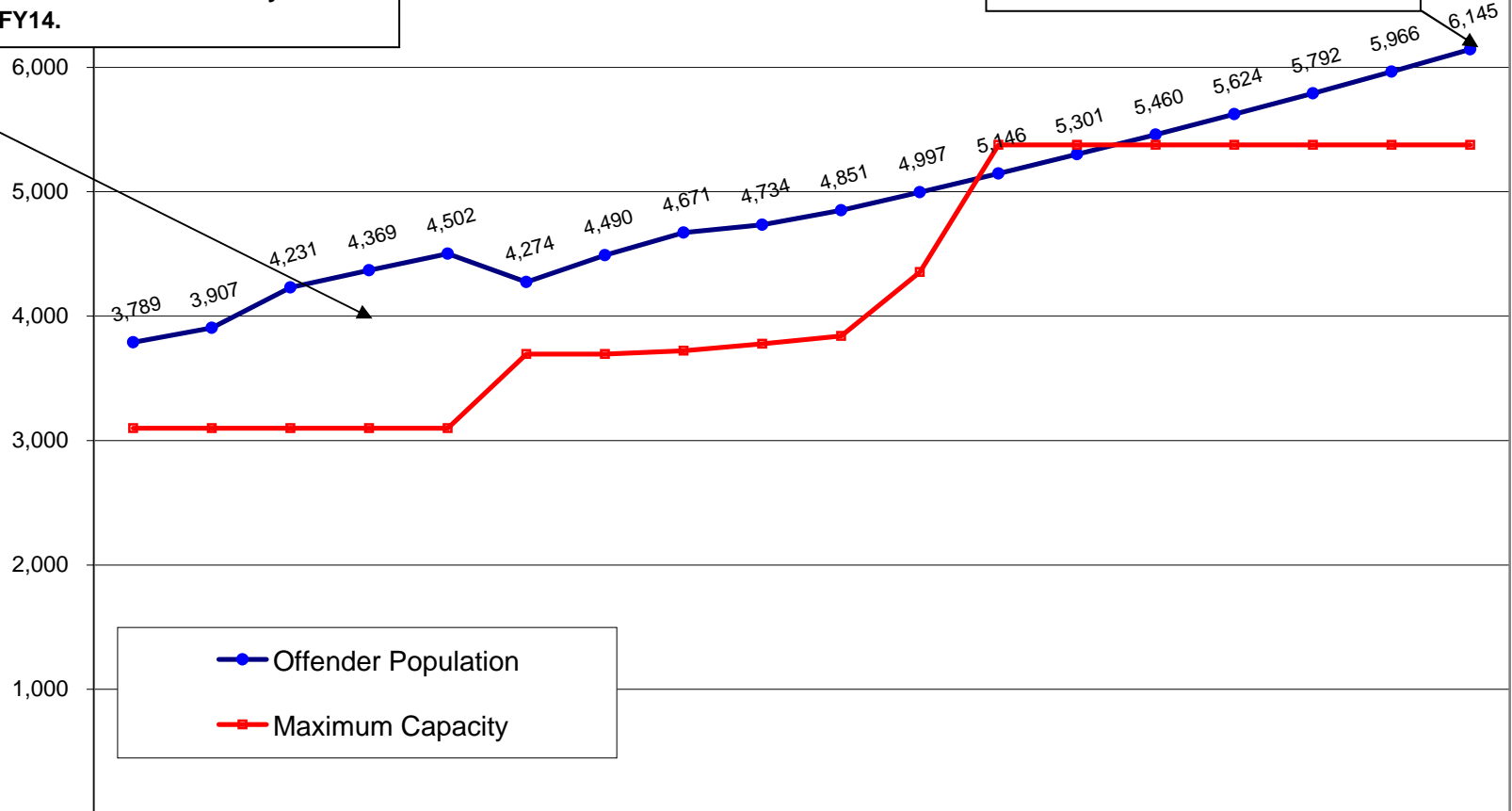


Alaska Institutional Inmate Population FY03-FY20

Excess institutional inmate population was contracted to out-of-state prisons until Goose Creek Correctional Center became fully operational in FY14.

Institutional inmate population is projected to exceed capacity by 769 beds in FY20.



	FY03	FY04	FY05	FY06	FY07	FY08	FY09	FY10	FY11	FY12	FY13	FY14	FY15	FY16	FY17	FY18	FY19	FY20
Offender Population	3,789	3,907	4,231	4,369	4,502	4,274	4,490	4,671	4,734	4,851	4,997	5,146	5,301	5,460	5,624	5,792	5,966	6,145
Maximum Capacity	3,098	3,098	3,098	3,098	3,098	3,696	3,696	3,722	3,778	3,840	4,353	5,376	5,376	5,376	5,376	5,376	5,376	5,376
Over (Under) Capacity	(691)	(809)	(1,133)	(1,271)	(1,404)	(578)	(794)	(949)	(956)	(1,011)	(644)	230	75	(84)	(248)	(416)	(590)	(769)
GF Budget FnlBud Column (in millions)	\$166.9	\$165.5	\$170.2	\$187.5	\$210.4	\$218.4	\$227.5	\$247.5	\$256.3	\$271.6	\$305.6	\$313.6	\$336.5	\$361.0	\$387.2	\$415.4	\$445.6	\$478.1

* FY14 enacted budget (does not include management plan adjustments)

**FY15-FY20 budget projections based on DOC annual average GF growth rate of 7.3%

Based on the approximate 3% population growth rate experienced between FY03-FY12, the institutional inmate population is expected to reach 6,145 by FY20.