

DEPARTMENT OF LABOR AND
WORKFORCE DEVELOPMENT

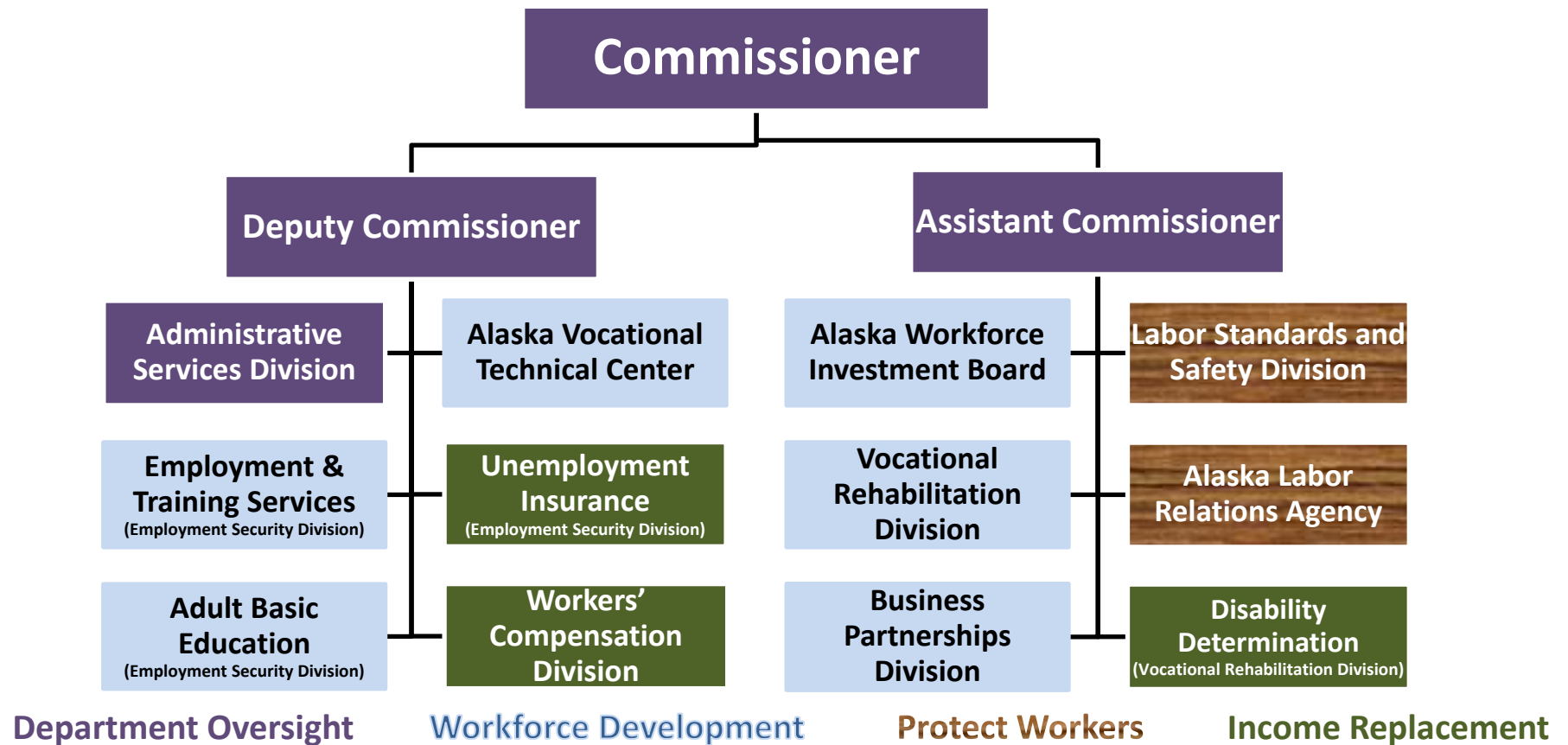
DEPARTMENT OVERVIEW

HOUSE LABOR AND
COMMERCE COMMITTEE
FEBRUARY 12, 2014



ALASKA DEPARTMENT OF LABOR & WORKFORCE DEVELOPMENT
COMMISSIONER DIANNE BLUMER

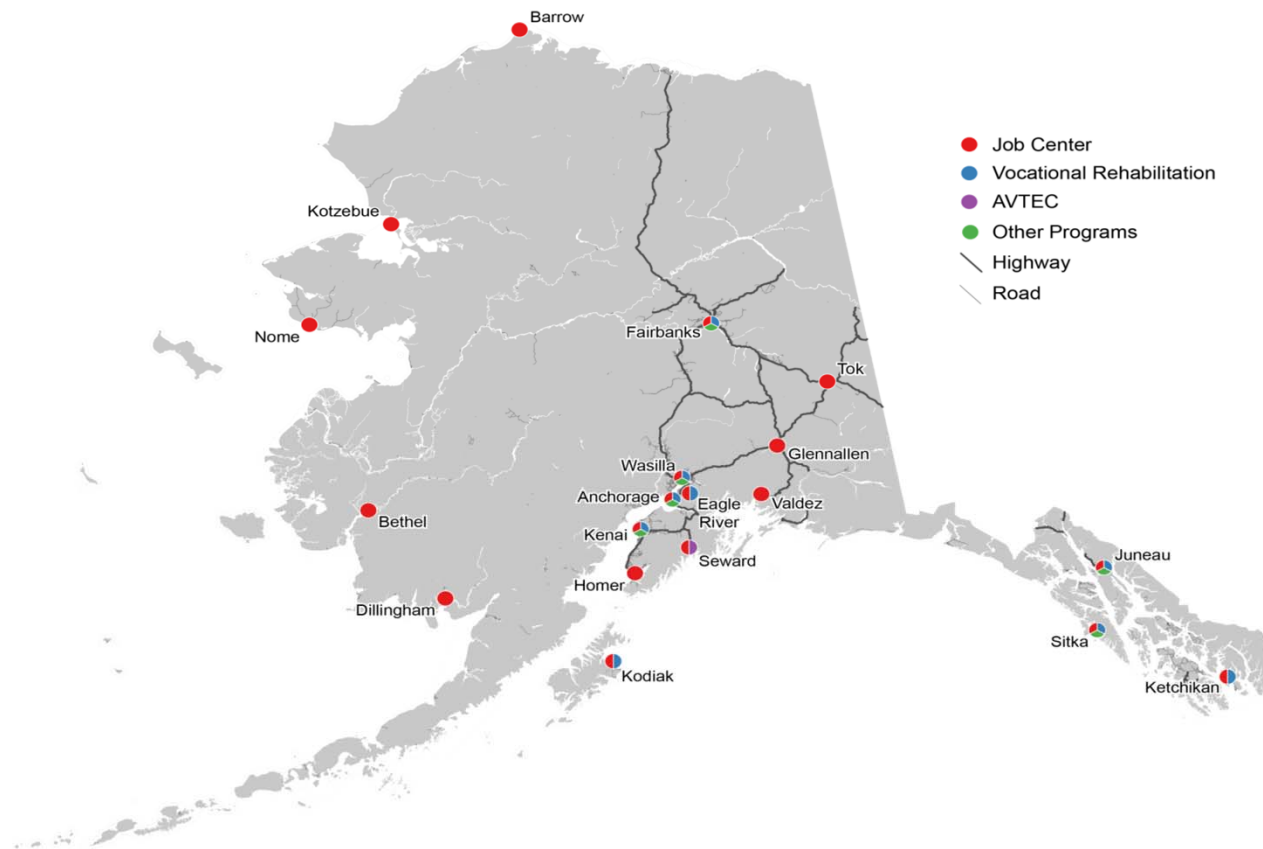
ORGANIZATION CHART



ALASKA DEPARTMENT OF LABOR & WORKFORCE DEVELOPMENT
COMMISSIONER DIANNE BLUMER



SERVICES BY LOCATION



ALASKA DEPARTMENT OF LABOR & WORKFORCE DEVELOPMENT
COMMISSIONER DIANNE BLUMER



ALASKA LABOR RELATIONS AGENCY



- **Provided training for summer law intern in the “Study Law in Alaska” program**
- **Worked to resolve more cases through resolution without a formal hearing process**



ALASKA DEPARTMENT OF LABOR & WORKFORCE DEVELOPMENT
COMMISSIONER DIANNE BLUMER

ALASKA WORKFORCE INVESTMENT BOARD

- Completed 2 job center certifications required for federal Workforce Investment Act funding
- Participated in revision of Oil and Gas Plan with Division of Business Partnerships and industry
- Outreached with industry and area vocational education training centers in Kenai, Anchorage and Juneau during annual meetings



ALASKA DEPARTMENT OF LABOR & WORKFORCE DEVELOPMENT
COMMISSIONER DIANNE BLUMER



AVTEC

- Enrolled 366 in long-term programs and 758 in short-term programs in FY13
- Logged 87% completion rate and 92% training related job placement for FY12 long-term program enrollees
- Opened dorm replacement capital project to students on 1/4/14
- Implemented AVTEC's Alaska Maritime Training Center offering first-ever U.S. Coast Guard approved Ice Navigation course



ALASKA DEPARTMENT OF LABOR & WORKFORCE DEVELOPMENT
COMMISSIONER DIANNE BLUMER

BUSINESS PARTNERSHIPS

- **Awarded FY13 workforce development grant investments – 5,566 Alaskans received job training and 21,351 Alaska youth received career awareness, guidance or work experience**
- **Completed process improvement evaluation of workforce development grant solicitation and evaluation process**
- **Worked with the Oil and Gas Industry Steering Committee on Alaska Oil and Gas Workforce Development Plan**



ALASKA DEPARTMENT OF LABOR & WORKFORCE DEVELOPMENT
COMMISSIONER DIANNE BLUMER

EMPLOYMENT SECURITY



- Recorded 22 percent lower Unemployment Insurance Tax rate for 2014
- Exceeded all federal UI management “Acceptable Level of Performance Goals for Core Measures”
- 150,406 Job Center visits already this year
- Graduated 1,635 GED students



ALASKA DEPARTMENT OF LABOR & WORKFORCE DEVELOPMENT
COMMISSIONER DIANNE BLUMER

LABOR STANDARDS AND SAFETY

- Focused on wage and hour law/regulation education – served more than 12,000 with employer briefings
- Inspected 5,034 boilers, 557 elevators and 1,577 electrical/plumbing installations
- Increased worksite inspections 15% – 60% consultation and 40% enforcement
- Planned 2014 Governor's Safety and Health Conference March 4-6 at Anchorage's Dena'ina Center – expands youth safety initiative for 2,000+ area students



ALASKA DEPARTMENT OF LABOR & WORKFORCE DEVELOPMENT
COMMISSIONER DIANNE BLUMER

VOCATIONAL REHABILITATION

- **Trained counselors for unique employment barriers faced by individuals with convictions**
- **Established a "Business Team" of counselors to assist employers to hire qualified employees with disabilities**
- **Assisted 598 individuals with disabilities to find employment**
- **Collaborated with Department of Administration to increase hiring managers access to qualified employees using provisional hiring program**



ALASKA DEPARTMENT OF LABOR & WORKFORCE DEVELOPMENT
COMMISSIONER DIANNE BLUMER



WORKERS' COMPENSATION



- Held employer education workshops around the state to help prevent employer noncompliance with workers' compensation laws
- Implemented new computer case management system (CMS) that incorporates electronic filing
- Held Workers' Compensation Board listening sessions in Fairbanks, Anchorage, Kenai, Juneau



ALASKA DEPARTMENT OF LABOR & WORKFORCE DEVELOPMENT
COMMISSIONER DIANNE BLUMER

WE'RE PREPARING ALASKANS FOR THE JOBS OF TODAY—AND TOMORROW.

ALASKA DEPARTMENT OF LABOR & WORKFORCE DEVELOPMENT
COMMISSIONER DIANNE BLUMER
EMAIL: COMMISSIONER.LABOR@ALASKA.GOV
PHONE: (907) 465-2700



ALASKA DEPARTMENT OF LABOR & WORKFORCE DEVELOPMENT
COMMISSIONER DIANNE BLUMER

