

PORT MACKENZIE
RAIL EXTENSION

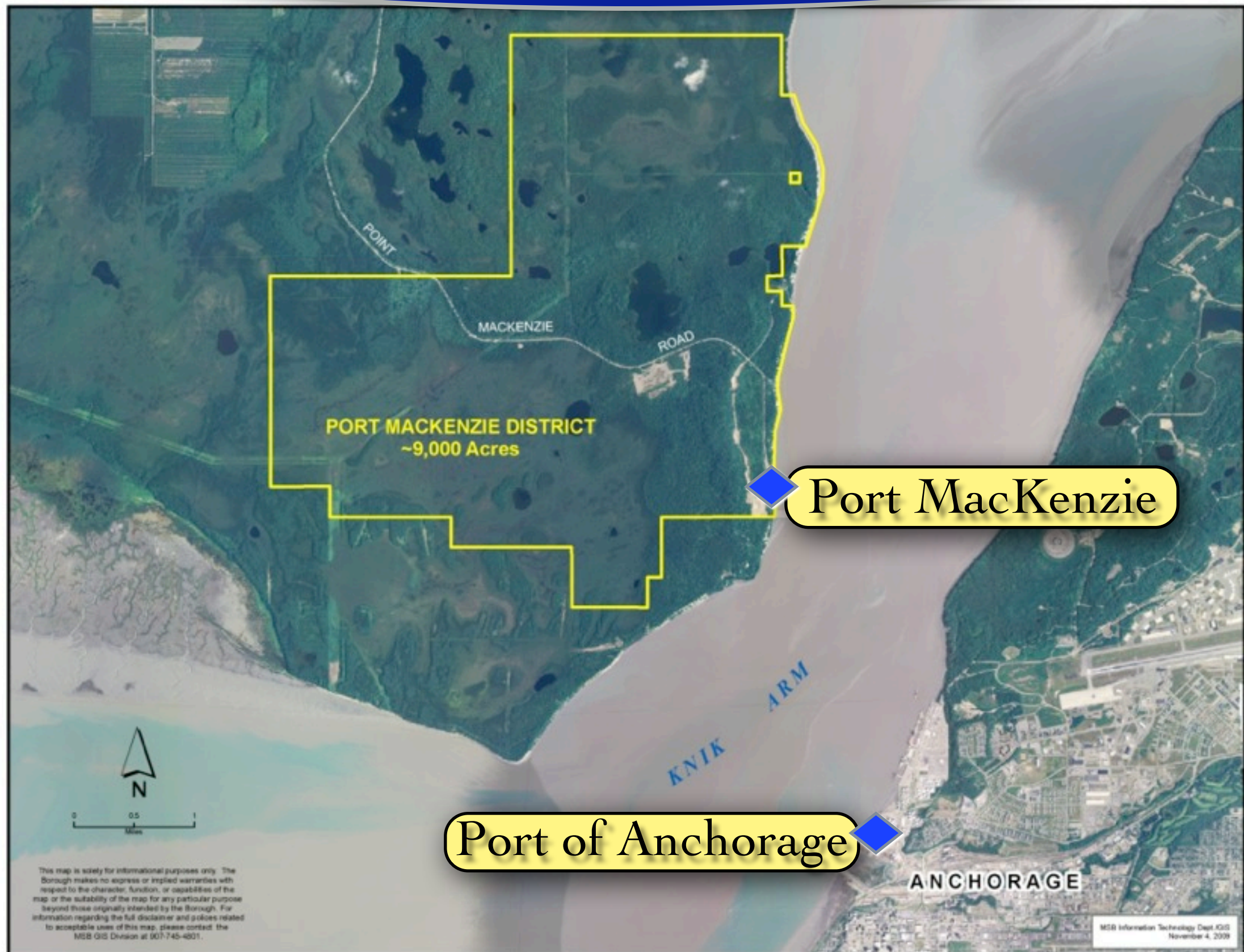


POISED FOR GROWTH

Port Mac & working ship in ice



Only port in Alaska with **large** (14 sq. mile)
staging, storage and industrial area





Barge dock staging area



Upland lease lots



For large projects

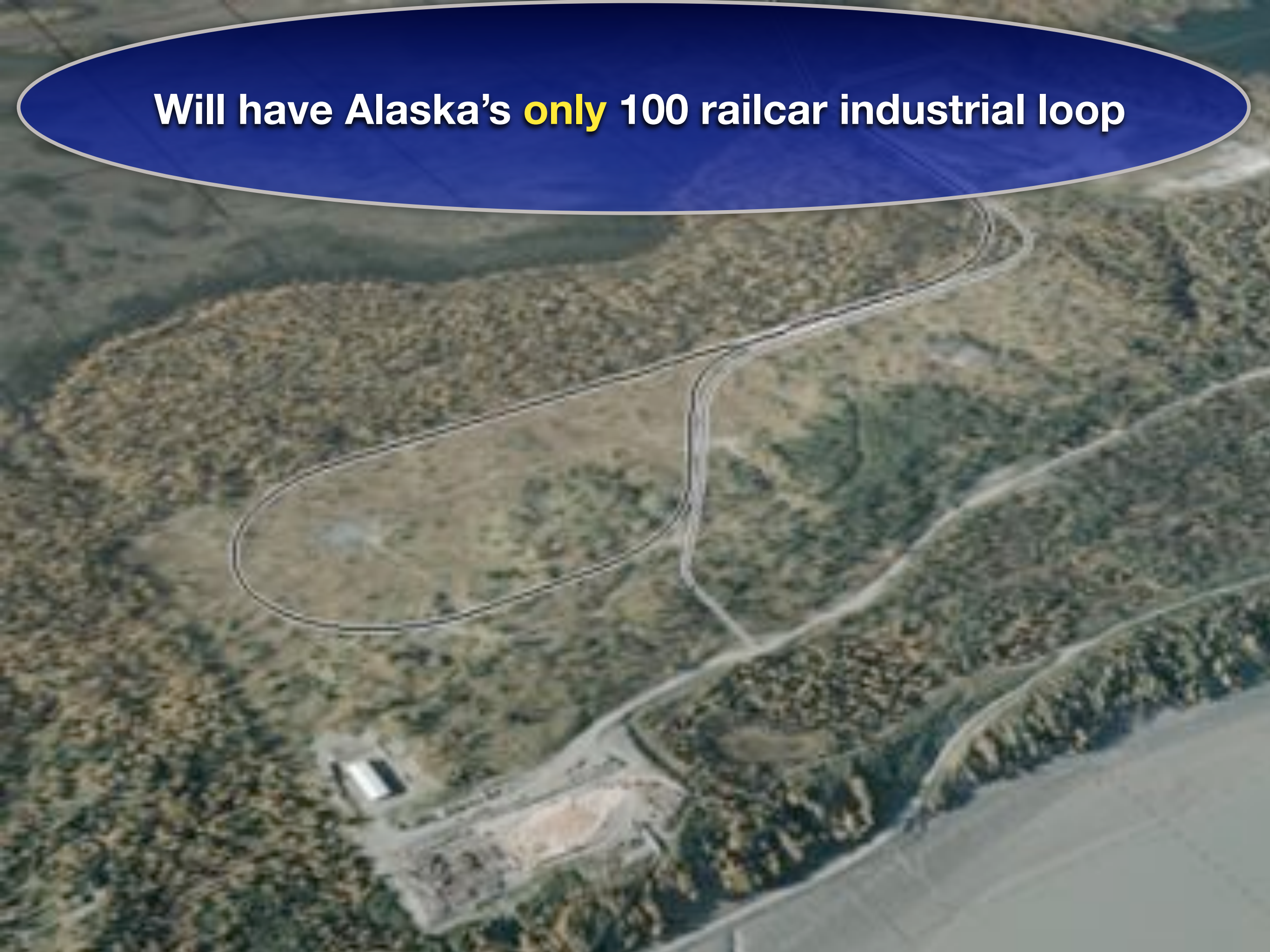
Activity at the Port



Bulk Resources



Will have Alaska's **only** 100 railcar industrial loop



An aerial photograph of a port area. In the foreground, a large dark barge is docked at a pier. To the right, a shoreline is covered in dense green forest. Further back, a large industrial or processing facility with several buildings and a large pile of material is visible. A yellow arrow points from the right edge of the image towards this facility. The background shows a wide expanse of water under a cloudy sky.

Exports

A project cargo Port

- ✦ would reduce transportation costs for PROJECT CARGO on Alaska's biggest projects: either natural gas pipeline and Susitna Dam
- ✦ would reduce transportation costs on recurring project cargo delivery



Imports



Imports



Fuel shipments

- 6.9 M gallon fuel tank farm, Central Alaska Energy
- providing low sulfur diesel fuel
- \$15 M in construction, start May 2014 (AIDEA funded)



Central Alaska Energy
Fuel Storage Facility
Point Mackenzie, Alaska

project cargo

- steel for northern bridges
- pipe for old and new oil fields
- fracking sand for future shale oil development
- other petroleum-related equipment



Project Forwarding Lessee



Mineral Development

Ambler Mining



Examples of mines and mineral prospects along rail corridor



Greater Wasilla Chamber of Commerce

Raven Gold Alaska Pogo Mine

Central Alaska Energy JDM Consultants

PacArctic Klondike Concrete Co.

Houston Chamber of Commerce **Accelergy**

Greater Fairbanks Chamber of Commerce

ALASKA GASLINE DEVELOPMENT CORP. Alutiiq

Greater Palmer Chamber of Commerce

Alaska State Chamber of Commerce **Koniag**

Houston City Kinross-Fort Knox

Alaska Railroad Fairbanks North Star Borough

Resource Development Council **NPI**

International Union of Operating Engineers

AEDC

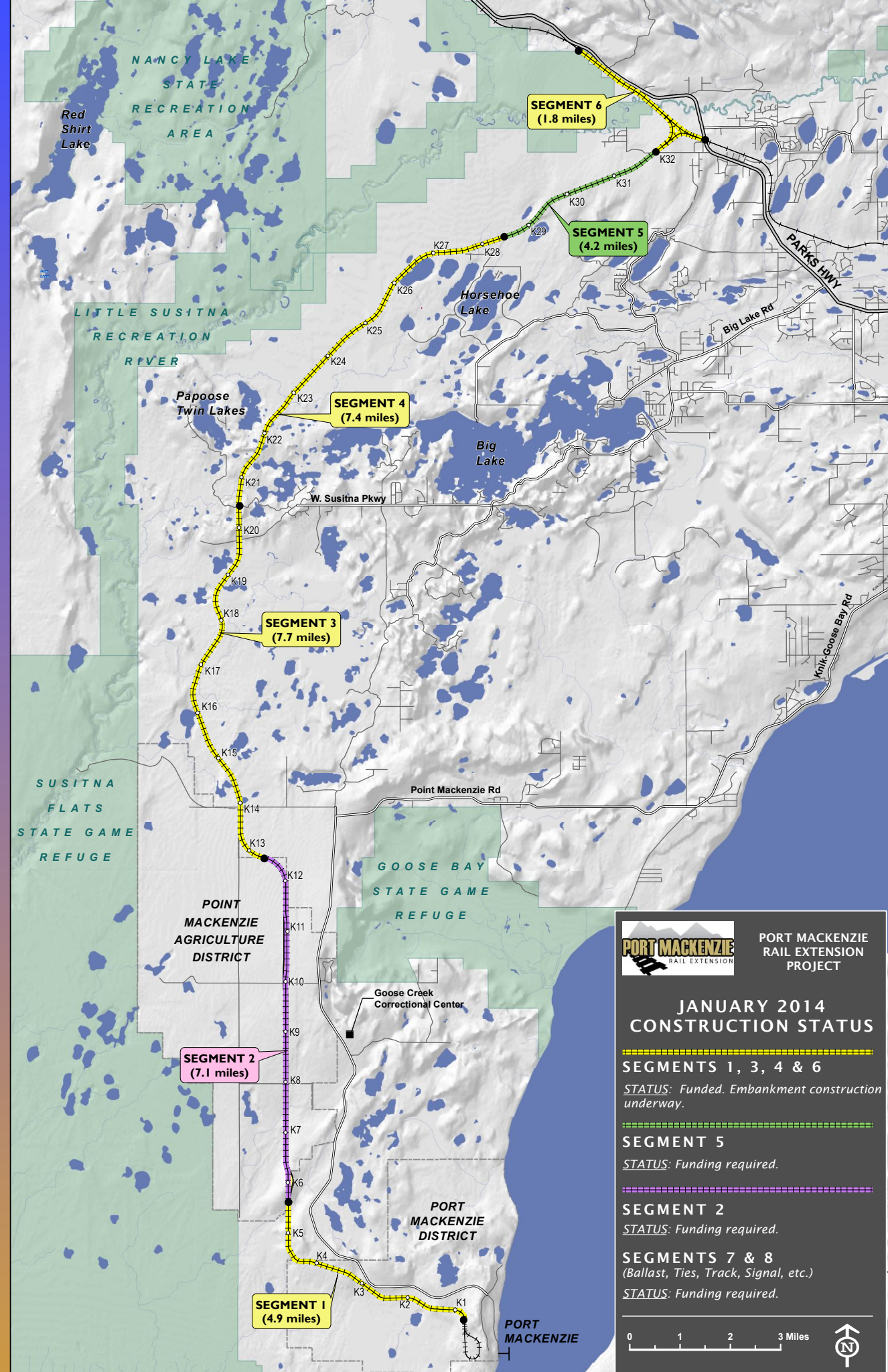
The Alaska Miners Association

Companies & Freight on Port MacKenzie Rail

- WestPac Logistics
- Central Alaska Energy
- Sumitomo Metal Mining
- Alutiiq
- NPI
- QAP
- Usibelli
- Great Bear Petroleum

RAIL CONSTRUCTION





Aerial of project



JOBS



Nearly 200 jobs at peak of last season

PORT MACKENZIE

RAIL EXTENSION

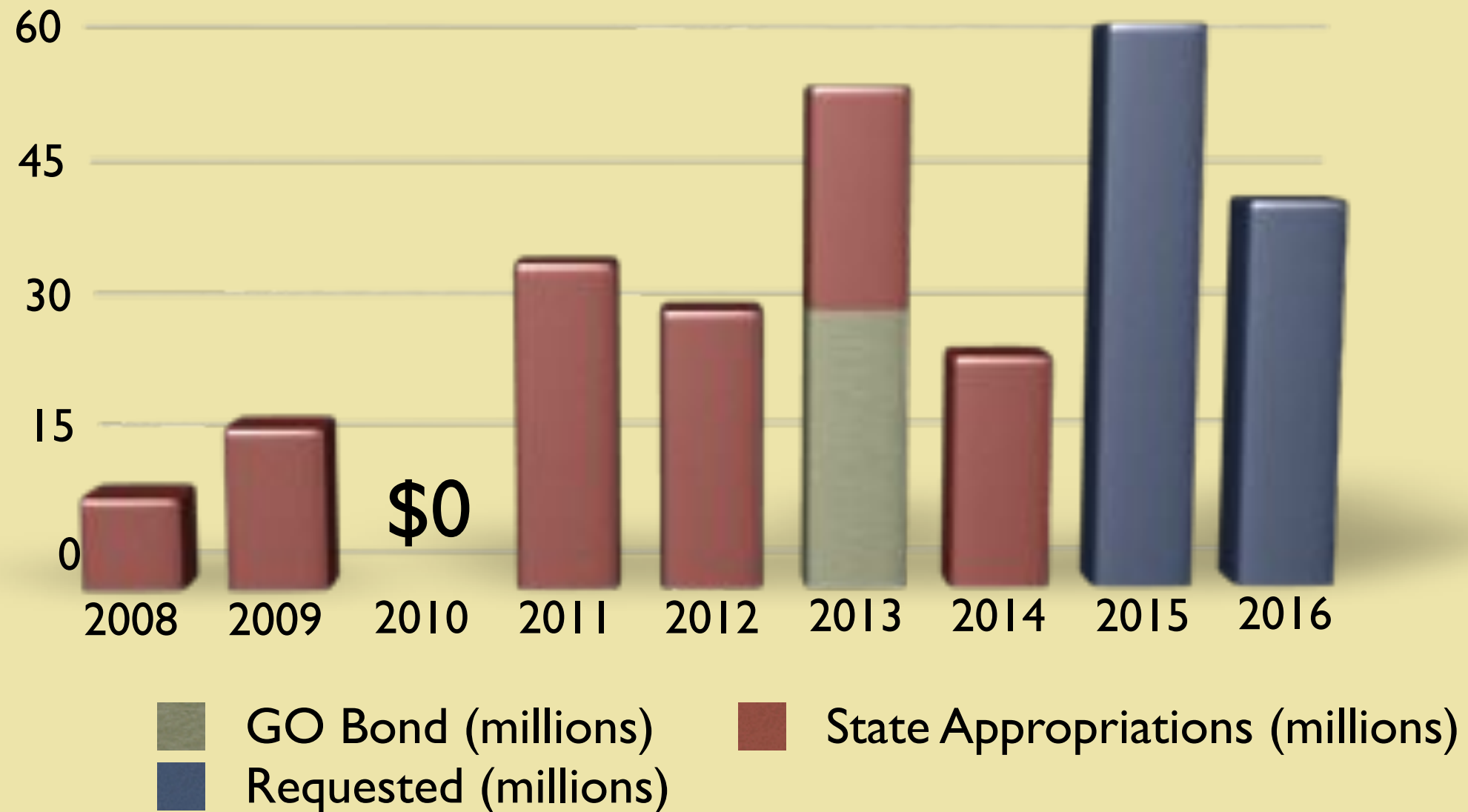


\$171 million

Six separate appropriations
and a state wide general obligations bond sale



Project funding over time



Total funding to date

\$171 million



Full length of the
future rail extension



Full length of the
future rail extension

Currently Funded



Full length of the future
rail extension

Currently Funded

2013 \$30 Million GO Bond



Full length of the
future rail extension

Currently Funded

2013 \$30 Million GO Bond

Remaining \$101.5
to complete



PORT MACKENZIE RAIL EXTENSION GROUNDBREAKING, JUNE 4, 2013



Thank You!