

# **Alaska Department of Fish & Game**

## **Division of Commercial Fisheries**



**Cora Campbell – Commissioner**

**Jeff Regnart – Director**

# **Division of Commercial Fisheries**

## **Mission**

**Manage subsistence, commercial, and personal use fisheries in the interest of the economy and general well bring of the citizens of the state, consistent with the sustained yield principal, and subject to allocations through public regulatory processes**

# **Division of Commercial Fisheries**

## **Primary Responsibilities**

- **Manage subsistence, commercial, and personal use fisheries within state waters**
- **Manage shellfish species and some groundfish out to 200 miles**
- **Conduct applied research on Alaska's aquatic resources**
- **Plan and permit salmon hatcheries and mariculture operations**
- **Negotiate fishing agreements subject to the Pacific Salmon Treaty and Alaska-Yukon Treaty**
- **Coordinate with federal and international fisheries management agencies**

# **Division of Commercial Fisheries**

## **Core Services**

- **Harvest management**
- **Stock assessment and applied research**
- **Aquaculture permitting**
- **Customer service and public involvement**

# Harvest Management

- Supporting the Board of Fisheries in establishing regulations and management plans
- Opening and closing fishing areas and setting fishing times
- Collecting harvest and biological data
- Writing annual management reports to synthesize information



# **Harvest Management Components**

## **➤ Inseason Management**

- Employ a cadre of fisheries managers proximate to the fisheries**
- Managers have broad authority to open and close fisheries**

## **➤ Applied Science**

- To ensure that management of Alaska's fisheries is consistent with the sustained yield principle**



# Southeast Alaska Salmon Seine Fishing



# Crab Boat Setting Pots in the Bering Sea





# **Stock Assessment and Applied Research**

- **Salmon Escapement Enumeration:**
  - **Weirs, towers, sonar, foot/aerial surveys**
- **Juvenile salmon estimation**
- **Groundfish and shellfish surveys**
- **Herring spawn deposition and hydroacoustic surveys**
- **Aerial surveys for herring**
- **Dive surveys**
- **Biological, genetic, coded-wire tag sampling**

# Salmon Enumeration and Sampling



# Salmon Enumeration and Sampling



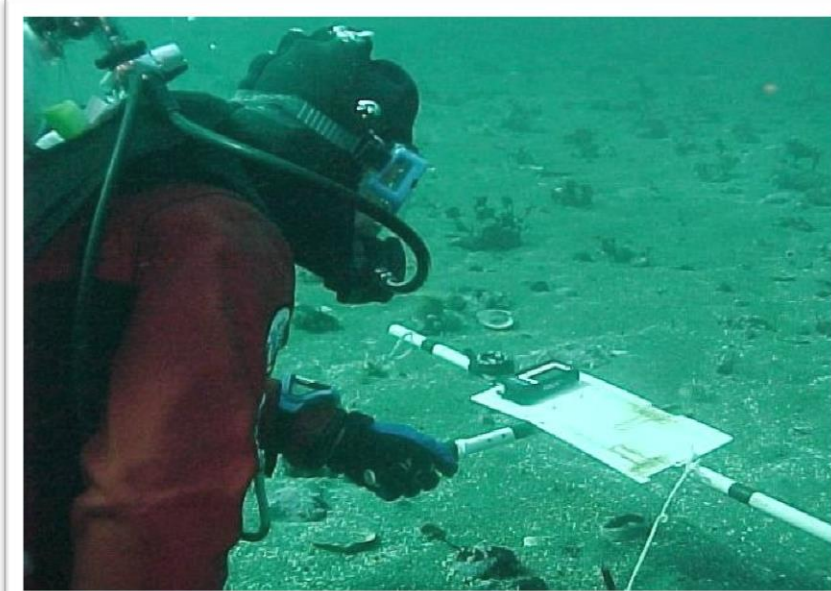


# And More...

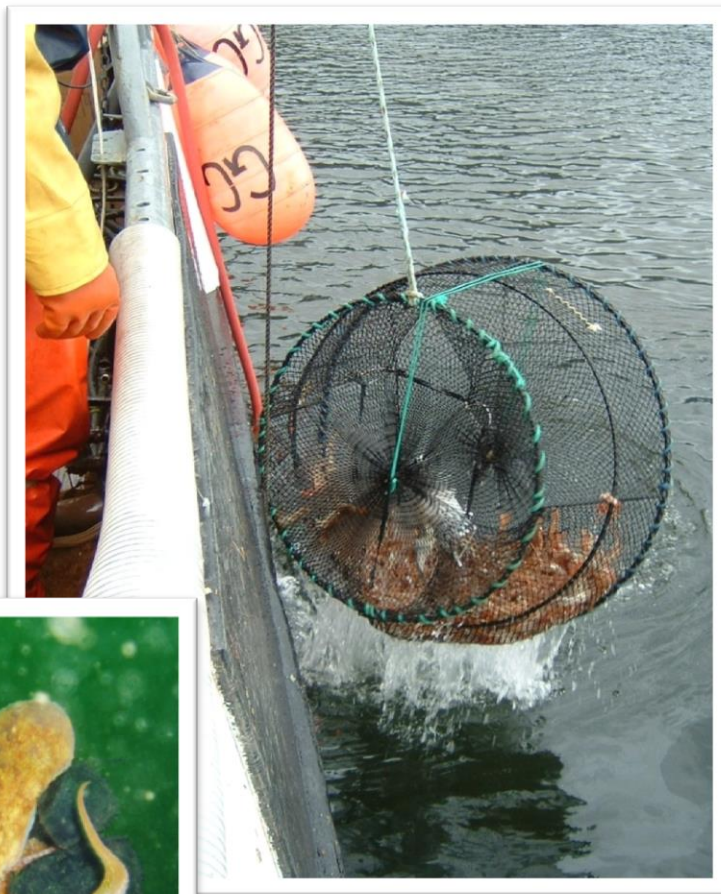




# Other Examples of Stock Assessments...



# And Yet More...





# Aquaculture Permitting



- **Private nonprofit salmon hatcheries**
- **Aquatic shellfish hatchery**
- **Aquatic shellfish farms**

# **Salmon Hatchery Program**

- **Department partners with operators to increase salmon harvests, while protecting wild stocks**
- **Our research has increased consumer confidence in Alaskan salmon by assuring the marketplace that these products come from a sustainable managed program**
- **Puts more dollars in fishermen's pockets**



# **Hatchery / Wild Research Project**

- **Department partnered with hatchery operators to study interactions of hatchery stocks with wild stocks**
- **CIP funding and industry funding**
- **Long-term project will yield better salmon research and enhance our partnership with industry**

# **Customer Service and Public Involvement**

- **Design and maintain division website**
- **Publish brochures and other informational materials on divisional programs**
- **Produce custom reports from fish ticket and other databases**
- **Develop and administer divisional publication policies and procedures**

# Laboratory Services

- Pathology Laboratory
- Coded Wire Tag and Otolith Aging Laboratory
- Genetic Stock Identification Laboratory



Otoliths  
(Ear Bones)

# **Data Processing**

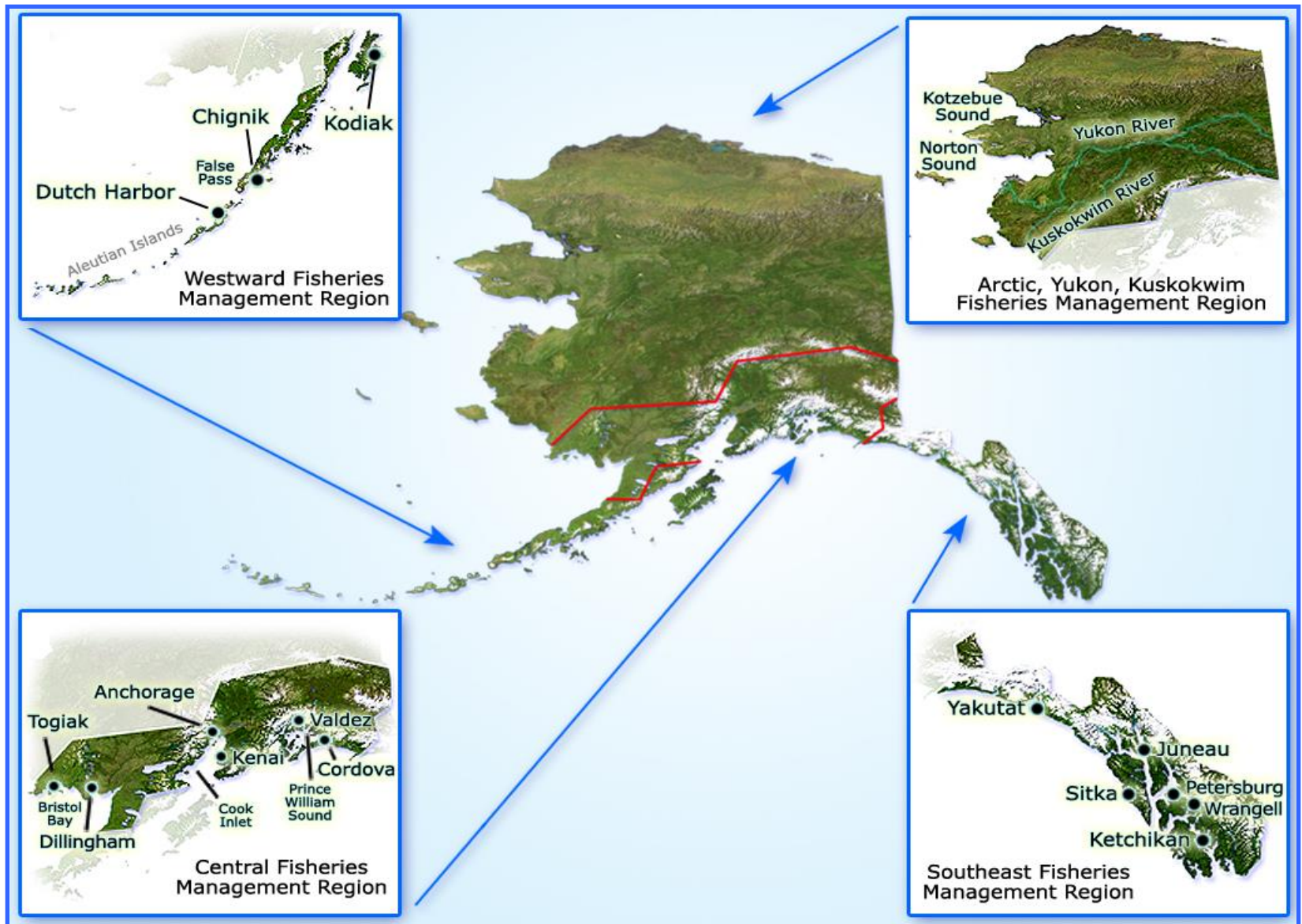
- **Fish tickets systems**
- **eLanding electronic catch reporting system**
- **Internet-accessible inseason catch and escapement databases**
- **Geographical information system databases**
- **Internet-accessible news release database**
- **Seafood processor/buyer intent to operate system**
- **Commercial Operator Annual Reports (COAR)**
- **Databases for biological data**



# Organization of the Division

- **Southeast Fisheries Management Region – Douglas**
- **Central Fisheries Management Region – Anchorage**
- **A-Y-K Fisheries Management Region – Anchorage**
- **Westward Fisheries Management Region – Kodiak**
- **Divisional Headquarters – Juneau**

# Fisheries Management Regions



# Permanent and Seasonal Staff



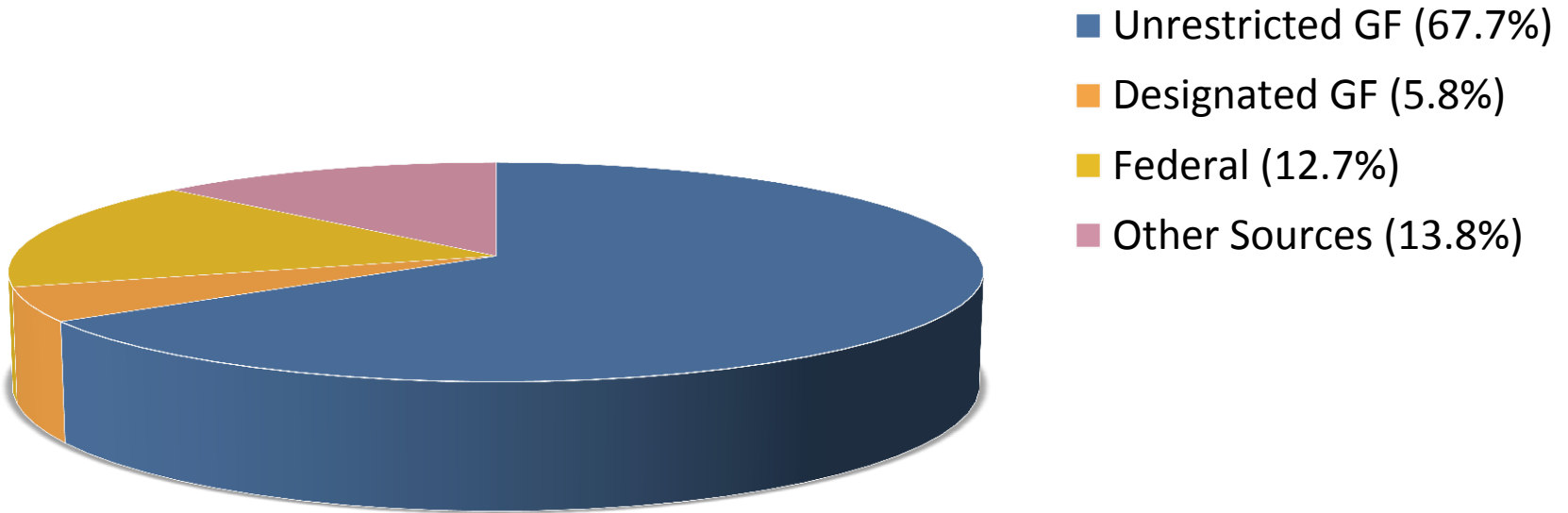
Dive crew aboard the *R/V Kestrel* in 2002.

## FY2015

- 309 permanent staff
- 432 seasonal staff
- 20 permanent offices
- 84 seasonal offices/field camps
- 6 research vessels

# FY2015 Budget Request

**Total Request = \$73,260.8**  
(in thousands)



# **Economic Impact of Seafood Industry on Alaska's Economy in 2011**

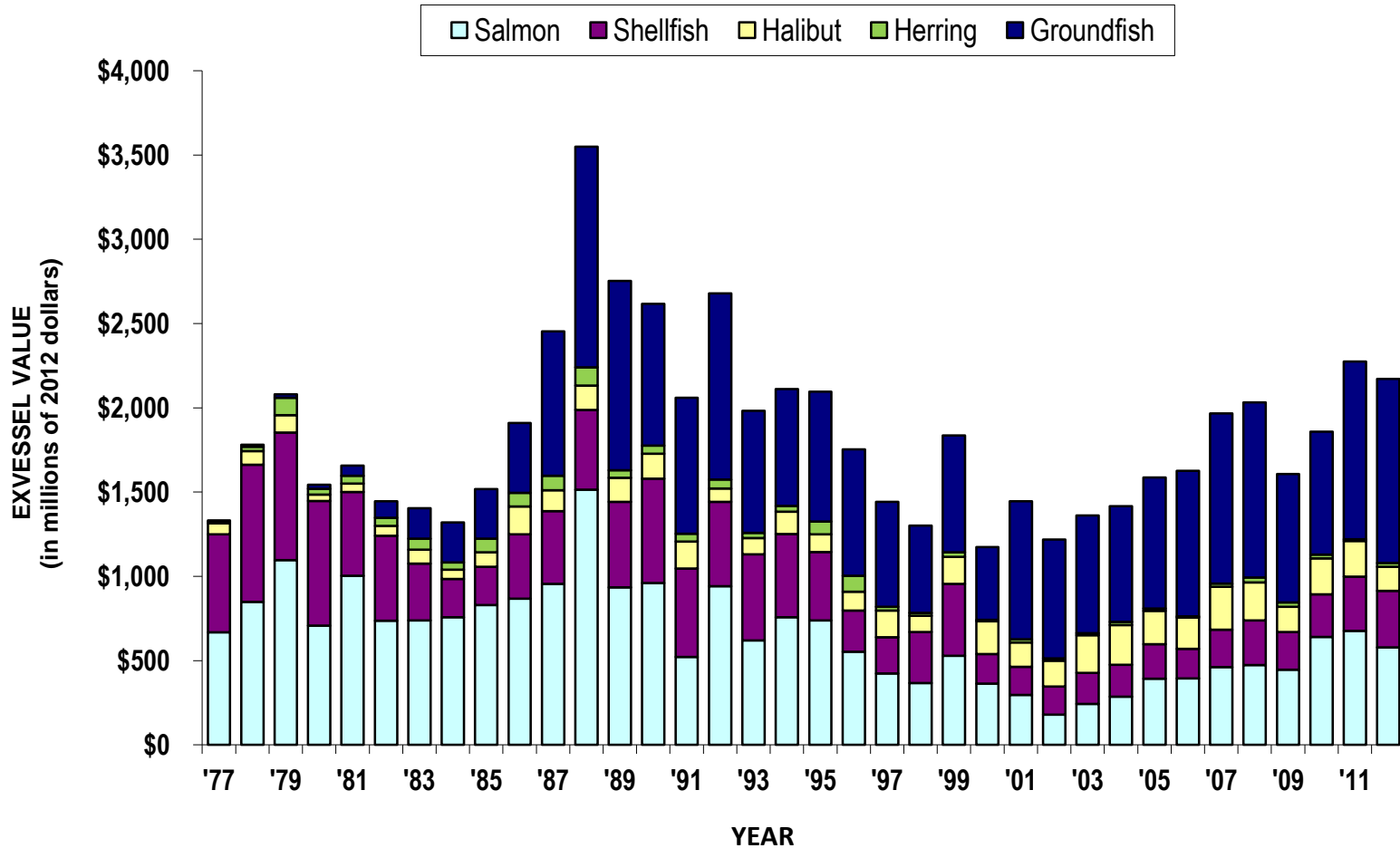
(Source: McDowell Group 2013)

- **Generated 63,100 Alaskan jobs in seafood harvesting, processing sectors, and support industries**
- **Approximately 41,530 of these employees were Alaskan residents**
- **Generated \$1.73 billion in direct payments to labor with \$1.28 billion going to Alaska residents**
- **Generated total seafood sales of \$4.6 billion.**



# Exvessel Value of Alaska's Commercial Fisheries

Inflation Adjusted Exvessel Value of Alaska's Commercial Fisheries, 1977-2012



# **Divisional Highlights of 2013**

- **Commercial salmon harvest value approaches record**
- **Western Alaska salmon stock identification program**
- **Commercial shellfish harvest value approaches record**
- **Assisted with organizing the Chinook Salmon Symposium**

# **Divisional Highlights of 2013**

- **Assisted in the development of the Statewide Chinook Salmon Research Plan**
- **Assisted in the State's efforts to provide retailers and non-governmental organizations with credible elements of independent sustainability programs**





**Thank you!**  
**Questions?**