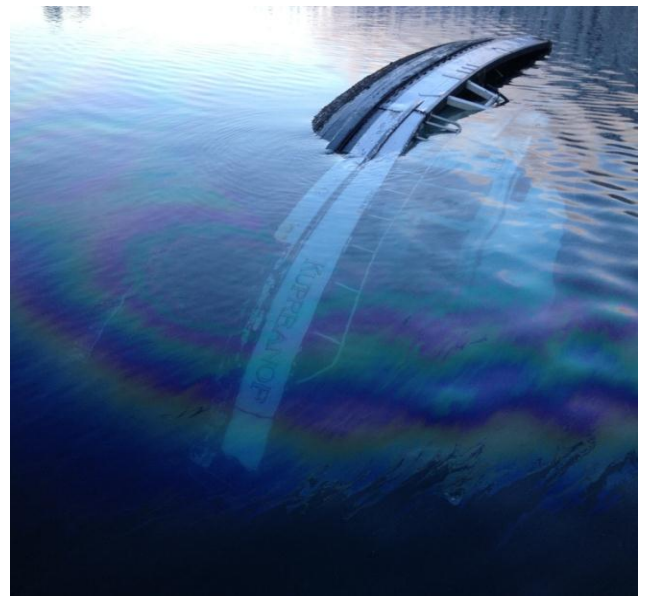


Derelict Vessels and Shipwrecks on DNR managed lands

Most recently DNR took responsibility for, and possession of two derelict vessels that sunk in Jakolof Bay near Homer. These two vessels had been denied access to local harbors due to the poor condition of the vessels. The owner anchored both of them in Jakolof Bay in September or October of 2012 where eventually due to the condition of the vessels and snow load they sank in approximately 60 feet of water.



These vessels were eventually refloated in a joint effort by the US Coast Guard, ADEC and ADNOR and transported to Homer in mid January. The cost to all agencies was approximately \$250,000 to raise, remove the hydrocarbons, stabilize, tow back to Homer, and have the vessels placed in dry storage. On board these boats was a small amount of hydrocarbons (fuel and oil) as well as propane tanks, flares, fire extinguishers, deep cycle batteries and equipment such as a welder and generator.

DNR had to receive authority from DOT/PF in order to take control of the derelict vessels under AS 30.30.090 and further dispose of the vessels under AS 30.30.100



DNR responds to approximately 15 shipwrecks per year. Unfortunately most marine vessels do not sink in easily accessible locations in shallow water. The vast majorities sink in deep water and are difficult if not impossible to locate or drift ashore and are eventually pushed into the beach or coastline leading to much more difficult, dangerous and expensive responses/removals.





In some cases vessels or barges are left, abandoned on state owned shore lands along rivers or lakes. The following examples are located near Bethel.



