



AP3 Pre-Kindergarten Program

Alaska Department of Education and Early Development

SFIN DEED Subcommittee

September 10 & 11, 2013

Anchorage LIO

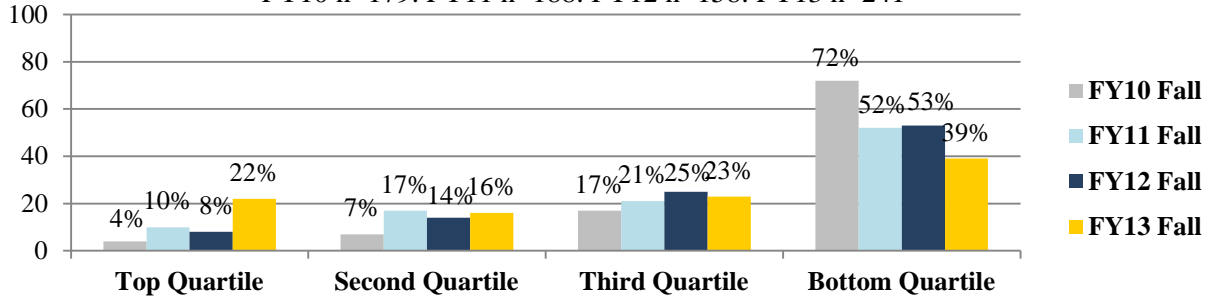
Peabody Picture Vocabulary Test, Fourth Edition (PPVT)

Peabody Picture Vocabulary Test, Fourth Edition (PPVT-4)

Each fall and spring, students' receptive English vocabulary is measured using the Peabody Picture Vocabulary Test, Fourth Edition (PPVT-4). The results provided are for students who completed both fall and spring assessment data for the FY10, FY11, FY12, and FY13 school years. Based on the national percentile rankings of the PPVT, the percentage of students in each quartile was as follows:

State Aggregate PPVT All Program Percentages (Fall)

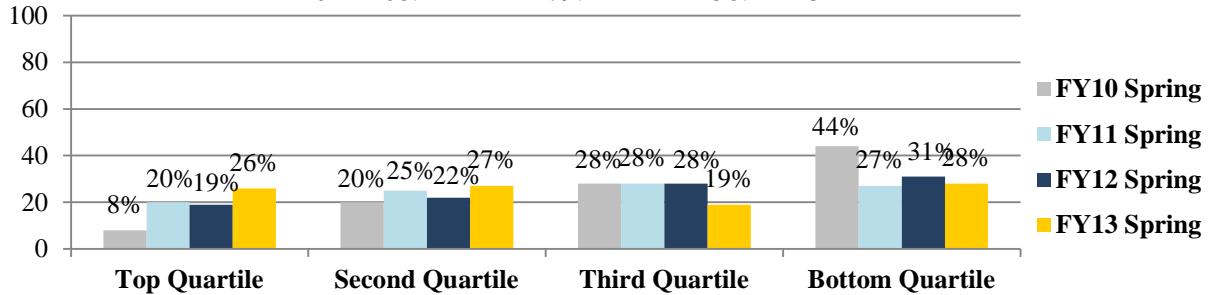
FY10 n=179: FY11 n=188: FY12 n=158: FY13 n=241



	2010	% of (n=179)	2011	% of (n=188)	2012	% of (n=158)	2013	% of (n=241)
Top Quartile (75 th -100 th percentile)	7	4%	19	10%	13	8%	54	22%
Second Quartile (50 th -74 th percentile)	13	7%	32	17%	22	14%	39	16%
Third Quartile (25 th -49 th percentile)	30	17%	39	21%	39	25%	55	23%
Bottom Quartile (0-24 th percentile)	129	72%	98	52%	84	53%	93	39%

State Aggregate PPVT All Program Percentages (Spring)

FY10 n=168: FY11 n=179: FY12 n=158: FY13 n=241

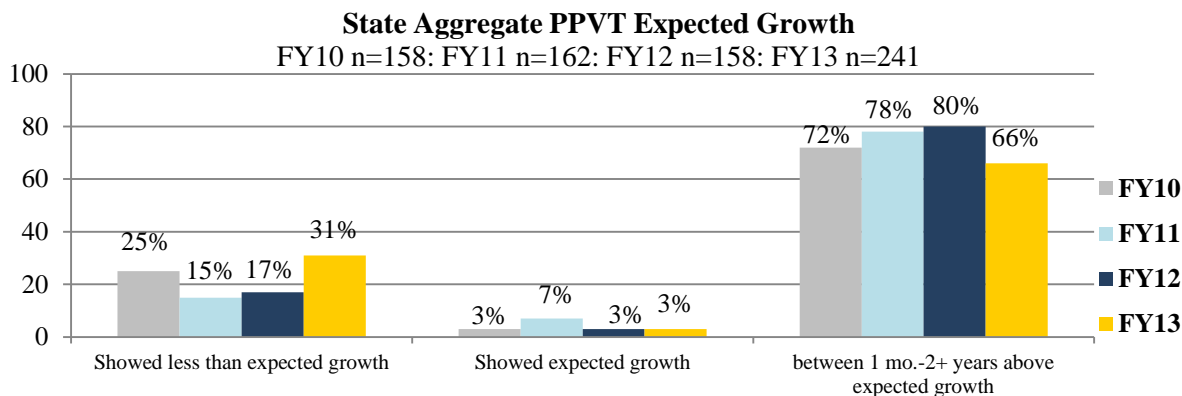


	2010	% of (n=168)	2011	% of (n=179)	2012	% of (n=158)	2013	% of (n=241)
Top Quartile (75 th -100 th percentile)	13	8%	36	20%	13	19%	63	26%
Second Quartile (50 th -74 th percentile)	34	20%	45	25%	22	22%	64	27%
Third Quartile (25 th -49 th percentile)	47	28%	50	28%	39	28%	46	19%
Bottom Quartile (0-24 th percentile)	74	44%	48	27%	84	31%	68	28%

Peabody Picture Vocabulary Test, Fourth Edition-(PPVT)

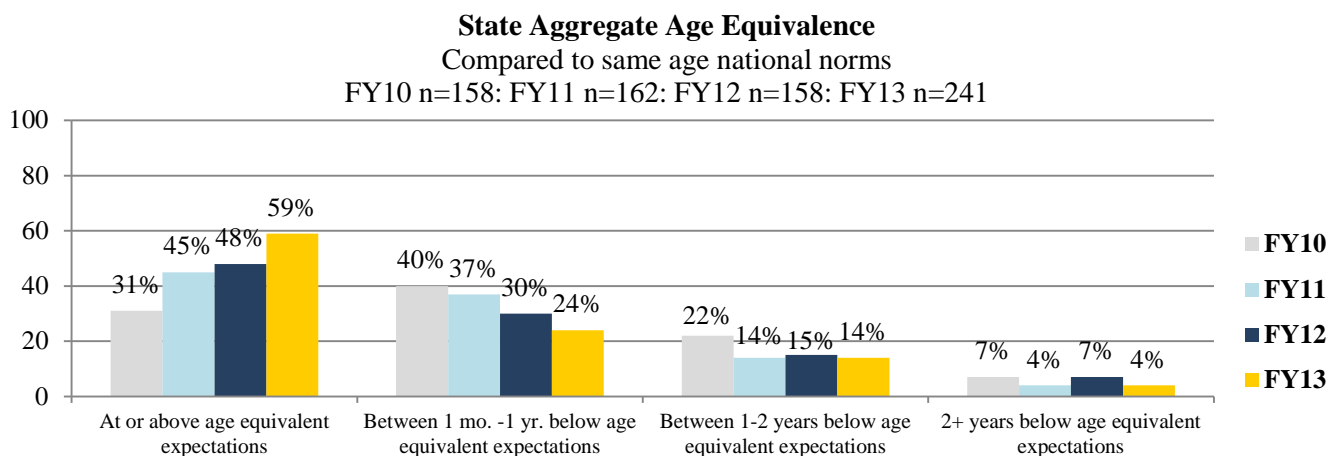
Continued

Another PPVT comparison is a growth model. It shows each child's growth in months compared to expected growth. If there are seven months between the pre and post we expect to see seven months of growth for the child.



	2010	% of (n=158)	2011	% of (n=162)	2012	% of (n=158)	2013	% of (n=241)
1 mo.- 2+ years above	114	72%	127	78%	126	80%	159	66%
Expected growth	5	3%	11	7%	5	3%	7	3%
Less than expected growth	39	25%	24	15%	27	17%	75	31%

As well as percentile national comparison and the growth model the PPVT provides an Age Equivalence compared to national norms for same age children.



	2010	% of (n=158)	2011	% of (n=162)	2012	% of (n=158)	2013	% of (n=241)
At or above age equivalence	49	31%	73	45%	76	48%	141	59%
1 mo. – 1 year below	63	40%	60	37%	48	30%	58	24%
1-2 years below	35	22%	23	14%	23	15%	33	14%
2+ years below	11	7%	6	4%	11	7%	9	4%